

Whangamatā & Waihi NEWS

ISSUE 164 - 17 APRIL, 2026

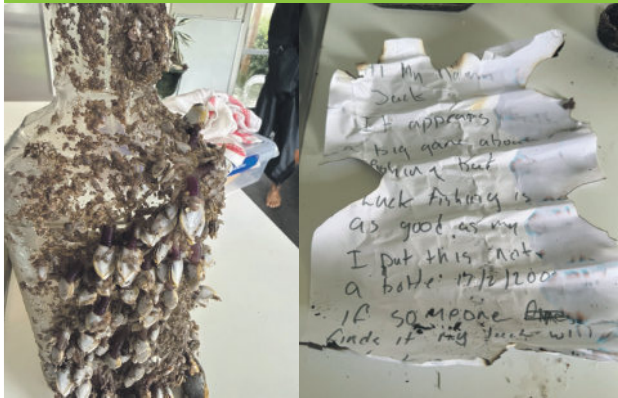


Dynamite Season Kicks Off P7

FREE COPY
PLEASE TAKE ONE!

Photo by Mark James

Message in a Bottle P8



Cassie opens Exchange P12



Easter Arts Trail P9



BY LOCALS, FOR LOCALS, ABOUT LOCALS.

WE WELCOME YOUR CONTRIBUTIONS!

Email WhangamataNews@gmail.com • Facebook [@whanganews](https://www.facebook.com/whanganews)

Taken home by bach owners and visitors to everywhere

SEE ALL OUR EDITIONS LIVE AT WWW.WHANGAMATANNEWS.NZ

EDITORIAL & MEDIA SALES:
JENNIE BLACK - 021 0232 1661

INDEPENDENTLY OWNED

DELIVERED TO WAIHI BEACH, WAIHI, WHIRITOA, WHANGAMATĀ, ONEMANA, HIKUAI, PAUANUI & TAIRUA



To the EDITOR

TCDC: Cut the bureaucracy, not the services

Ratepayers are once again being asked to dig deeper. TCDC's executive proposed an average 14%+ rates increase. Councillors trimmed it to 3.77%. Both figures are unacceptable — and both entirely dodge the real problem.

Nobody is talking about TCDC's burgeoning bureaucracy.

Housed in Thames, TCDC now employs an estimated 255 full-time equivalent (FTE) staff at a cost approximately \$28 million per year. That is ratepayers' money. Yet in all the consultation documents, all the carefully worded proposals, there is not a single mention of reducing staff numbers. Not one.

Instead, we are offered four choices: mow the grass less, cut transfer station hours, pay more fees, or lose rates remissions. That is the sum total of TCDC's vision for fiscal discipline — make ratepayers pay more or receive less, while the organisation itself remains untouched.

Look at the legal function alone. TCDC employs an army of lawyers in-house — and still spends hundreds of thousands of dollars on external legal opinions. Why? If the in-house team cannot do the job, why are ratepayers funding them?

Then there is communications. A heavily staffed department producing material that, with standardised templates and

modern AI tools, could be handled by one person. Councils far larger than TCDC are already doing exactly this.

And the consultation process itself? Whangamatā residents were notified of a community meeting — Thursday 10 April, 10am to 1pm — by a notice published Wednesday 8 April. One working day. That is not community engagement. That is window dressing.

The numbers make this even harder to swallow. According to TCDC's own figures, the Whangamatā ward alone contributes \$23.9 million — 22.3% — of the district's total 2024/25 rate take of \$107.3 million. That figure is projected to climb to \$117.5 million in 2025/26 and \$122 million by 2026/27, before accounting for the proposed shift from Land Value to Capital Value rating. More broadly, the eastern Coromandel — from Whangapoua to Whangamatā — contributes some 75% of all district rates. Communities paying the lion's share of the bill deserve far better than this.

TCDC exists to serve ratepayers, not the other way around. Before a single dollar is added to rates, or a single service is cut, this council owes its community a full, honest accounting of its staffing levels, its management structure, and whether 255 FTE employees is remotely justified for a district of this size.

Submissions are open until 28 April. I urge every ratepayer to have their say — and to demand the question TCDC refuses to ask itself.

Patrick Kerr
WHANGAMATĀ

Library closure unacceptable

I am so very dismayed to know that our precious library is now closed for however long it takes to find a new abode.

It seems that the Council has been very slack in not having the roof repaired a long time ago and letting it get into a very bad state. This situation is not acceptable.

So many people rely on the library service. I have always been so grateful for the service the library provides and the wonderful people who run it.

I am a member of two book clubs, and all the members use and appreciate the library books.

Please restore this service urgently as there are a lot of people needing books to read.

Gilli Killick
WHANGAMATĀ

Library deserves urgent attention

Kay Baker (Whanga News 3/4/26) succinctly highlights the disgraceful neglect of the Council building where our community's most valued library is housed, repairs to which will now be substantially more than if TCDC had fixed the well-known problems years ago, a fact that Michael Dobie, TCDC, acknowledged in his report.

Has there always been a hidden agenda here, as some have suggested, so that TCDC can succeed in relocating the library and occupy the whole building?

The building for this well-used facility, with its exceptional resources, respected staff and volunteers, deserves urgent attention from TCDC so the library can stay where it is and re-open as soon as possible.

Mike & Sue Ellis
WHANGAMATĀ

WE WELCOME YOUR LETTERS. Your letters must be no longer than 250 words and must be signed (no nom de plumes). *Whangamatā & Waihi News* reserves the right to edit, or to not print, submitted letters.

Scott Simpson

MP for Coromandel

Contact me anytime
0800 550 330 • scottsimpson.co.nz
mpcoromandel@parliament.govt.nz
f [scottsimpsonmp](#)

Authorised by Scott Simpson, Parliament Buildings, Wellington.

What's coming up:

- Thursday 23rd April - Mussel Night + a drink voucher
- Friday 24th April - Burger of your choice + a drink voucher
- Saturday 25th April - ANZAC Day
- Anzac cookies & coffee deal Anzac Day
- Sunday 26th April LIVE MUSIC 4pm-7pm

REMEMBER THE

ANZACS

A Moment Shared, A Tribute Forever

Coffee and Anzac Biscuit

\$9.00

Valid Saturday 25th April 2026

KITCHEN OPENING HOURS

BREAKFAST - SATURDAY + SUNDAY
8AM-11:30AM

LUNCH & DINNER AVAILABLE FROM
12PM-LATE

Come & join us at the **WHANGAMATĀ OCEAN SPORTS CLUB**

ANZAC WEEKEND OPENING HOURS:

Friday 24th April
11am - late

Saturday 25th April
1pm - late

Sunday 26th April
8am - late

Monday 27th April
11am - late

Courtesy van available every Thursday - Sunday



To the EDITOR

Poet's Corner

Rain, rain, go away,
come again another day

No! No! We don't want that, we've got a
CYCLONE on it's way

High winds, treacherous seas,
away from the beaches if you please

No chance of children going out to play
on these current school holidays

Trampolines all tied down, they become
flying saucers we have found
And lay buckled on the neighbours' ground

Seeing sand bags being filled by locals
gave me a thrill
Because people here don't stand still

For those with Rellies out of town
We have hunkered down and intend to be
safe and sound

In this wonderful town.

- Written by Lin Street

Whangamata Community Library: Closed, mouldy, and forgotten by TCDC

The closure of the Whangamata Community Library is not an accident. It is the predictable result of years of wilful neglect by Thames-Coromandel District Council.

TCDC cites "water ingress and mould issues" — language that obscures a troubling reality. Black mould poses genuine health risks to children, the elderly, and those with respiratory conditions. Warning signs were apparently ignored for years.

The most troubling aspect is not the mould — it is that TCDC knew. Water ingress and mould take months or years to develop. Residents and library volunteers raised concerns for years. The Council's response has been characteristic: delay, deferral, and studied inaction.

The library now sits closed indefinitely — no remediation timeline, no clear plan. To add insult to injury, TCDC suggests returning books to their Thames office: a 50-kilometre round trip for a service meant to serve our community.

TCDC frames the library as "run independently," distancing itself from responsibility. But TCDC owns the building. The landlord allowed its own asset to fall into disrepair until forced closure.

That is the Council's failure.

The financial context is stark. The Whangamata ward contributes \$23.9 million — 22.3% of TCDC's total rate take — making us the second-largest rating ward in the district. And yet we cannot get our library maintained to a habitable standard. That is not misfortune. That is mismanagement.

A public library is not a luxury. It is a cornerstone of community life — for children's literacy, the elderly, job seekers, and those without home internet. Its loss falls hardest on those who can least afford alternatives.

I call on TCDC to publicly answer:

1. When were Council staff first aware of water ingress or mould, and what action was taken?
2. How many items in the collection have been damaged, and what is the plan to replace them?
3. What is the timeline for remediation?
4. What interim library space will be provided, and when?

Whangamata is a vibrant, growing community deserving the same care Thames affords itself. We are tired of being managed from a distance and expected to be grateful for half-measures. Our library matters. Fix it.

Patrick Kerr
WHANGAMATA

FLOORINGXTRA.CO.NZ

FLOORING TO SUIT YOUR STYLE

CARPET • VINYL • TIMBER • LAMINATE • RUGS

Phone or email us! We're measuring & laying! View samples instore!

WHANGAMATA FLOORING XTRA

Whangamata | 636 Port Road | 07 865 8562 | whangamata@flooringxtra.co.nz

BOOF BOLAND

PAINTER & DECORATOR

P O Box 410, Whangamata 3643
M: 0274 367 254
E: jenboof@outlook.com

Master Painters New Zealand

Curtains and Blinds and More

CURTAINS

ROLLER SHEERS

BLINDS

WHANGAMATA

SHUTTERS

HOME BACH

BEACH PAUANUI

VENETIAN BLINDS

WHIRITOA SURF

THERMALS BLOCKOUTS

Contact Louize or Gavin

027 4777 916

FREE NO OBLIGATION MEASURE AND QUOTE

email info@curtainsandblinds.co.nz
www.curtainsandblinds.co.nz



To the EDITOR

Urgent concerns over Council inaction

I am writing to express my deep concern and frustration regarding the closure of the Whangamatā Library due to serious building issues, including extensive mould and a leaking roof. This closure of our community library represents a highly visible and disappointing failure in the provision of a basic public service.

This situation is particularly troubling given that the building also houses the Council's local office, and that the Council has been aware of these problems for several years. Despite this, only minimal remedial work has been undertaken. The Chief Executive's description of this as "patching" is, frankly, not confidence-inspiring - especially as there appears to have been little or no validation of whether those measures were ever effective. The building has now deteriorated to the point where it poses a clear health risk.

The loss of the library is not a minor inconvenience. It is a valued public facility and an important social and educational hub for the community. There is also a real risk that books and other materials remaining in the building will suffer permanent

damage due to prolonged exposure to damp and mould.

While I understand that a new building may be the long-term solution, a timeframe of two or more years is simply not acceptable without meaningful interim measures. Given that these issues have reportedly been known for some considerable time, the current situation points to a lack of urgency and inadequate prioritisation.

I would appreciate your response to the following:

- What immediate steps will be taken to protect the library collection from further damage?
- What temporary arrangements will be put in place to restore library services to the community?
- Why was more decisive action not taken earlier, given the known condition of the building?
- What is the confirmed timeline for both interim and permanent solutions?

Whangamatā residents and ratepayers deserve better than the loss of an essential service through prolonged inaction. I urge the Council to address this matter with the urgency and accountability that our community is entitled to expect.

A Ross Stewart
WHANGAMATĀ

Slash, trees and silt ruining harbour

I have lived in Whangamatā for 15 years and the deterioration in both the harbour and beach are significant. We are shocked just again recently after the last big weather event, to see enormous trees, logs, off cuts (including rounds) and slash debris on our beaches and in the harbour. Of course this has been surging down the river and creek inlets often blocking them, causing flooding.

This is a disgrace!

Why have the forestry not been held to account? When will someone stand up and take responsibility for this mess?

Many have notified councils over the years, both district and regional to get the creeks and rivers unblocked and cleaned up, with each pointing the finger at the other claiming 'not our problem' and then

the job is lost altogether.

Really who should be paying for the clean up of these forestry logs? The profits from forestry, I believe should. Why aren't there steps in place to cleanly fell the trees and tidy the land properly (as has been done in the past) so it does not create this mess.

Or perhaps if we really cared for our environment, stop raping the land with short term forestry profits. It's creating havoc everywhere. Land flooding, silt filling harbours, beaches becoming forestry dumps, bridges being taken out, roads not coping with the loads, etc.

I love our country and I think it's time for those in power to actually care about the 'clean, green' space we are always marketing to others. It's time to get to grips with what and who are destroying it and do something about that.

Yvonne Reid
WHANGAMATĀ



REMEMBRANCE

WHANGAMATA RSA
Tuesday to Sunday from 12pm

ANZAC DAY
SATURDAY 25TH APRIL, 2026

Live shows & entertainment
Families welcome!
Thinking of joining? Come see us today

come to
Ying's
@ the RSA

OPEN
TUESDAY - SUNDAY

LUNCH 11AM - 3PM
DINNER 5PM - 8PM
FRIDAY & SATURDAY 5PM - LATE

Dine in or Takeaway

Catering and Buffet available | Vegetarian and Gluten free options

Authentic Thai & European Cuisine

6.30am Sunrise Flag Raising & Service - assemble at Whangamata Surf Club.
Breakfast at Blackies in Williamson Park.
\$20pp (cash only) Bacon and Egg Butty & Coffee

9am Mix and Mingle at Whangamata RSA.

10am Beach Hop vehicles will collect members and take them to parade start.

10.20am Civic Parade led by the Bay of Plenty Pipes & Drums from the Council Offices.

11am Civic Service in Whangamata War Memorial Centre Welcomed by RSA President Geoff March.

On completion of the service, the laying of wreaths and floral tributes will take place at the Remembrance Wall, the Last Post, Ode and Reveille, followed by a light lunch and entertainment at the RSA Clubrooms.

All Welcome



Fire report

The brigade has been busy for 2026. Frequent weather events being the main incident type. Thankfully the latest cyclone not impacting as predicted. The planning by all agencies in response went well and again showed the potential and need to have emergency supplies on standby. With the change of seasons soon we need to do our checks. Starting with checking smoke alarms and ensuring you have adequate cover throughout your homes. Fire places and components require cleaning and checking especially after the winds we have had. Electric blankets are also required to be checked as they deteriorate over time. Pests come inside and have the tendency to damage wiring leading to fire risks.

A major highlight last month was celebrating Ralph and Doreen Pitchers 60 years service to Whangamata Fire with family and brigade members in attendance. Many sacrifices to family and work over this period protecting and being in part of many community groups just can't be matched. Our brigade numbers dropped with 3 members moving on due to work commitments. With a recruitment drive we have picked up 5 more members bringing some good skills and a fresh reminder on why volunteering is a vital part of small town.

- CFO Nigel AIREY

Whangamata police report

ANZAC Day holds a special place in the hearts of New Zealanders. It is a time to pause, reflect, and remember the service and sacrifice of those who have worn the uniform—past and present—and the families who have stood alongside them. From the early morning silence of the Dawn Service to community commemorations later in the day, ANZAC Day reminds us of the values forged through hardship: courage, loyalty, mateship, and service. These values continue to guide us today, including in the work we do as police serving the Whangamata community. ANZAC Day is not only about remembrance, but also about connection—coming together as a community to honour the past and look after each other in the present. Whangamata Police thank the community for your continued support, and we encourage everyone to take a moment on ANZAC Day to reflect on the meaning of service and sacrifice. Lest we forget.

A few editions ago, I wrote of my staff and I coming across a local man who should not have been driving. Following that interaction a number of loaded firearms were located inside his vehicle. I tell you now, I got the shock of my life as I carefully discovered these firearms in the loaded state! That male is

still in custody in prison, he has pleaded guilty to all charges and can expect to be sentenced in the District Court at the end of May.

There are some crafty burglars out there exploiting simple weaknesses in home and Bach security. There are some simple yet effective devices available online that can help you with surveillance while away from your home or Bach. For example, If my dog door gets opened by the cat or dog, an alert goes off on all our phones. Simple yet effective because we don't have a cat or a dog! But in all seriousness, take home security seriously. There are people that will take all your prized possessions and sell them for a few dollars.

Speaking of Burglars, a house that was burgled in Otahu Road, we have just had a great DNA hit on. That person when they are come across by Police will be locked up on first sight! Great work by the home owner for preserving the scene and items of interest that the burglar touched/used. Good work!

Social Media pages are a great place for sharing local information and raising awareness. However lately the standards keep dropping. Keep it clean, keep it tidy and keep it friendly. If you have an issue with someone, the best approach is always to have a civilised, adult conversation with that person. Like

we used to before we could post online! I think you get the picture.

Residents and visitors may have noticed occasional delays or a reduced police presence in Whangamata. This reflects current staffing levels, with the station operating with one fewer police officer than previously. This I have been working on for a good 12 months now but is a decision made well above my level. Police continue to manage available resources carefully, and respond to incidents based on priority and risk. While every effort is made to provide timely assistance, there are occasions when local demand exceeds available capacity. Community members who wish to raise concerns about resourcing or service delivery are strongly encouraged to share their view through appropriate channels, including contacting their local Member of Parliament. Community feedback plays an important role in informing broader discussions about policing resources. The Whangamata Police team remains committed to serving the community and work diligently to respond to incidents as effectively as possible under existing conditions. We appreciate the communities understanding and patience.

- Sgt Will Hamilton, Officer in Charge, Whangamata Police

Whangamata Club

Join Us AT THE **WHANGAMATA CLUB**

THE WHANGAMATA CLUB
Presents **MARK HUCKSTEP**
SAT 11TH APRIL
7.00 PM

ANZAC WEEKEND

BANDUO
LIVE AT THE WHANGAMATA CLUB
SATURDAY 25 APRIL
7:00 PM

GERRY LEE
Sunday 26th April
6:00pm

OPEN DAILY FROM 11AM

BISTRO
Monday - Friday from 3pm
Saturday & Sunday from 12pm

DINNER MENU
From 5pm daily

RESTAURANT
Friday to Sunday from 5:30pm

404 PORT ROAD
FACEBOOK.COM/THEWHANGACLUB
WWW.WHANGAMATACLUB.CO.NZ
P. 07 865 8705

Harbour birds: The royal spoonbill (kotuku ngutupapa)

This is another naturally occurring self-introduced species from Australia. It was first recorded in New Zealand in 1861 at Castlepoint on the Wairarapa coast.

Sightings gradually increased in following years with the first breeding record occurring alongside the white heron colony at Okarito Lagoon in South Westland in 1949. Since then it has successfully colonised New Zealand with numerous new small breeding colonies now established at multiple sites in both the North and South Islands. By 2024 the total NZ population had increased to around 4,600 birds, spread amongst 36 colonies. Their Conservation status here is Native, Naturally Uncommon, Increasing.

Each winter small numbers of royal spoonbill visit Whangamata Harbour and other local nearby coastal wetlands. They can be observed feeding in these shallow waters and roosting on undisturbed open areas of low-vegetated water margins or high up in surrounding trees, old pohutukawas being a favourite. Although present for varying periods outside of the breeding season, they have not yet established a breeding colony here. When feeding and roosting they tend to remain in fairly close proximity to their flock members



but will also happily mingle amongst other waterbirds.

This species is easily recognised as it is much larger than any of the other white-plumaged heron-like waterbirds such as the white heron, little egret and cattle egret. They have very long and distinctive black spoon-shaped bills and long black legs. When feeding in shallow waters they swivel their submerged beaks left and right repeatedly through a wide arc, searching for their main food items of small fish, shrimps, other crustaceans, aquatic insects and frogs. They feed both

day or night depending on the tides and have a unique adaptation - vibration detectors inside their bills that helps them to locate and capture prey species in murky water or dark conditions.

Each year in October, breeding birds gather together at their traditional nesting colonies. Courtship displays occur involving aggressive bill-sparring, gaping and jabbing, and aerial flight displays. Once pair bonds establish much mutual preening occurs. Nests consisting of sticks, leaves and other vegetation are constructed, usually in the

crowns of trees overhanging water or amongst tall reeds. Clutch size varies between 2-4 eggs per nest, incubated by both parents and hatching after 20-25 days. Feeding the chicks by partial regurgitation is also shared by both parents. Chicks fledge at about seven weeks old and then fed by the adults for several weeks following as they learn to feed for themselves. They then disperse to their traditional wintering sites.

Nationally royal spoonbill numbers are increasing and locally their wintering numbers appear on the increase as well. It is possible they could establish a small breeding colony somewhere in the Whangamata area in the near future. They would certainly be an interesting addition to the local resident avifauna.

We seem to have suitable nesting habitat and feeding areas available when the Otahu Estuary, Whangamata Harbour, Moanaanuanu Estuary, and Wharekawa Estuary are all considered. Let's hope from one of these habitats the spoonbills find an undisturbed site to their liking and this becomes a reality.

- John Adams, Whangamata Harbour Care, photo by Bevan Walker

LIVE YOUR BEST LIFE



Moana House offers Serviced Apartments

Independent 1 bed apartment with garden access and parking at your door. On site **Moana House facility** provides **Rest Home** and **Hospital level** of care.

Join in our activities, take a trip on our bus rides. Or walk around our beautifully kept gardens. These serviced apartments offer a range of services we can deliver to your door.

For more information and a friendly chat, about your needs and options call us on 07 865 9643.

Deborah Padfield (General Manager)
353 Tairua Road, Whangamata
07 865 9643

MOANA HOUSE & VILLAGE

He whare ahuru – a caring safe place

Season opener a stormy affair

The Red n Whites first game of the new year lived up to all expectations against a strong Thames side. With the threat of a tropical storm in the air and a good crowd considering the conditions, no one left the game early as this one went to full time and beyond.

An understrength Whanga team had 13 players doing an 80 minute stretch, with some playing out of position. Considering the size of the opposition and the pace of the game it was an awesome effort all round.

Coach Basil Lennan told Whangamatā News that "our defence into the breeze was outstanding in the first half" and while Thames scored twice in the lead up to half time Lennan was of the opinion that it was a 15 point wind with the locals only being adrift by half a dozen at the turn. "We are in this" was his view at that



stage, and in it they were.

With two players ruled out during the warm up the pressure was on, but with excellent use of the wind in the second half the Dynamites were ahead by 20 to 14 with the clock running down. That's when things got very interesting. Thames had just enough time to get within striking distance and looked to have scored a winning try under the sticks as the clock ticked over 80 minutes. The ref awarded the try, with a simple kick to win. Whanga protested and a long discussion with the whistle blower resulted in a dramatic penalty awarded to the home team (Offside). Thames went from exaltation to deflation as TJ kicked the ball dead to finish the game. Wow!

When asked for a player of the day, Coach Basil was hard pressed to name any one of the team as all played their part. He did give special mention to Eli, who was told he was starting at 10, not on the bench as he thought, and played a blinder of a game.

Well done the Red n Whites who played a gritty and determined game. The final score 20 - 14 was well deserved, and all eyes now on a couple of tough games ahead, Te Aroha and Waihi.

Go the Dynamites!

- Story & photos Mark James
More photos on Facebook



Boot it. is proud to offer mobile phone sales & plans!! Say hello to Boot mobile.



For all your mobile needs

We are proud to now offer mobile phone sales & services across New Zealand. Our mobile phone plans exclusively utilise the Spark mobile phone and data network, New Zealand's fastest with the best coverage.

Service and Support

- We handle all the set up for you and provide fast, friendly support.
- No wading through confusing phone support systems or talking to overseas helpdesks. Just simple, good old fashioned Kiwi service.

Your local mobile phone provider

Endless Plans

Our plans are priced competitively and are simple to understand. ALL our plans include:

- **Unlimited calling and standard SMS messages to Australia and New Zealand**
- **Endless Data at full speed to the max-speed allocation, then at 1.2 Mbps**
- **No minimum lock-in terms, just a 30 day notice period to cancel anytime**
- **Competitive overseas roaming packages**
- **WiFi calling capability if you are on a WiFi**

Mobile Plan Name	Max-speed data allowance (then Endless at 1.2Mbps)	Price inc GST
SimplePlan 10	10Gb	\$39
SimplePlan 20	20Gb	\$42
SimplePlan 30	30Gb	\$44
SimplePlan 50	50Gb	\$46
SimplePlan 100	100Gb	\$47
SimplePlan 1000	1000Gb	\$69

bootitconsulting.com | 0800 242 266 | team@bootit.net

Boot it.

Wonder Woods: A place to belong

Stepping into Wonder Woods, there is a noticeable shift in pace.

Families arrive through a historic hall, where freshly picked flowers, polished native timber floors, and soft music create a calm and welcoming atmosphere. A gentle scent lingers in the air, and thoughtfully updated facilities bring ease to the space before families step out into the surrounding native bush.

Tall trees stand overhead, the Tawa Tawa River runs clear and steady, kākā call in the distance, and fantails move between branches as children settle into the rhythm of the forest.

At the river's edge, a child stands beside their grandmother, looking into the water. Nearby, another carefully steps across stones beneath the surface, moving alongside their mother. On a fallen log, children take turns crossing—some fast, some slow—watching, waiting, and trying again.

"There's something really special here," one parent shares. "It feels like a fairytale—the hall, the bush, the river... it's calm, it's beautiful, and the children just seem to settle."

Wonder Woods is a nature-based playgroup grounded in relationship, where caregivers remain present and children move between connection and exploration. Teachers describe it as a space where like-minded whānau come together—drawn by a shared love of nature and a more connected, responsive way of being with children.

"Watching families slow down and find their rhythm together in the forest is what makes this so meaningful," one teacher reflects.

Here, learning isn't rushed or directed. It unfolds quietly—through movement, play, and moments of connection.



Wonder Woods is run by two qualified primary school teachers, whose additional studies and passions—including specialist teaching for learning and behaviour, and naturopathy—are thoughtfully woven into the programme.

And in Wonder Woods, children are given the time and space to be—within steady rhythms, gentle rituals, and learning with nature.

Enrolments are now open for term 2 which begins Wednesday, 22 April, 9.30-11am. Sessions run on Wednesdays in the Opoutere hall and surrounding redwood forest, welcoming toddlers, preschoolers, and 4-7 year olds and their caregivers.

**Contact Laura Van Leeuwen:
022 359 5366
theCuriosityCircuit@gmail.com**

Message in a bottle an incredible find



Kaea Rhind, 10 years old, resident of Tairua made a remarkable discovery last weekend.

A two litre Jack Daniels bottle complete with a fairly legible letter from 17 February, 2002. Kaea discovered the bottle on the Paku end of Ocean Beach. He wasn't beach combing, and found the bottle near the dunes.

His Mum Neisha told us "it was funny as we watched *Castaway* the night before so it made Kaea even more excited by the find."

The note is water damaged in parts, but what is readable says:

"Hi, My name is Jack. It appears some big game about (smudged) fishing but (smudged) luck fishing is as good as my (smudged). I put this note in a bottle 17/02/2002 (smudged). If someone finds it my luck will (smudged), contact me, Jack (smudged)."

Maybe Jack was wanting a change of luck fishing in our waters, maybe you know a Jack? That would make Kaea's discovery even more memorable! If so contact us at whangamataneews@gmail.com

- Jennie Black

Stirling Sports

sweat season

2 FOR \$140

2 SELECTED HOODS OR SWEATPANTS FOR \$140 FROM ADIDAS, NEW ERA & THE JOGGERS CLUB

stirlingsports.co.nz

607A Port Rd, Whangamata

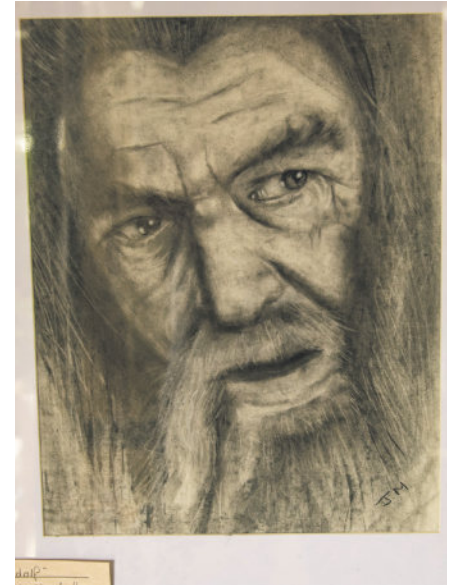
Easter Arts Trail

This year, the Whangamata Arts Collective once again hosted the Easter Art Trail, it offered a vibrant opportunity for local artists to open their studios and galleries to the public. Artists collaborated with special guest creators, presenting a diverse range of works and creative experiences throughout the community.

It is one of our absolute favourite events held each year. Ten studio hubs were open to the public with over 25 exhibiting creatives on deck to greet visitors and art lovers from all over the country.

Hope you got to follow the trail!

- Jennie Black, photos by Mark James, Whangamatā News



Retirement with room for it all

LONGRIDGE
COUNTRY ESTATE

At Longridge Country Estate, you don't have to give up anything when you retire.

- Modern standalone villas
- Wide streets and open outlooks
- Space for your motorhome or boat
- Vegetable gardens and orchards

From age 75, your weekly fee is fixed for life. For couples, once both partners are 75. Entry from age 65.

Ask us about our limited-time 50% capital gain offer on 6 selected villas.

Visit longridgecountryestate.co.nz or call 0800 928 928

Let's kill the amendment bill

Few things unite Kiwis like the Ocean. Our love of being out on or under the water runs deep within us. That's exactly why Kiwis are speaking out against Shane Jones' sweeping changes to fisheries legislation.

Despite more than 25,000 people rejecting proposed changes to the Fisheries Act last April, the Coalition Government has agreed to progress the Fisheries Amendment Bill to the next stage. It ignores previous submissions and introduces new proposals. The Minister wants the Bill enacted before the election. We don't.

The Bill now heads to the Primary Production Select Committee, who will consider whether the Bill stands, is changed or thrown out.

Subsidising commercial operators and fast-tracking commercial fish harvest at the expense of the marine environment, the fish, and our future is not a winning strategy.

Anyone who has spent decades out on the water knows there aren't enough fish. The problem is, the Amendment Bill will not resolve the depletion issue. Instead, the Bill attempts to normalise depletion.

It weakens environmental safeguards, limits public input into decision-making, and proposed removal of commercial minimum size limits for species such as snapper, trevally and tarakihi.

The public have been quick to understand the risks and vocalise their concerns. Less than a week after the Bill's release, Prime Minister, Christopher Luxton succumbed to public pressure, announcing he would drop the Amendment to allow commercial fishers to keep and sell baby fish.

But the job is far from done. Buried in 70 pages of legal jargon are changes to the Fisheries Act that seek to hide the intent of the Bill - to take fish from the public and hand more control to commercial interests. Another windfall for commercial quota owners. Another hit for us, our kids and the marine environment.

The Bill opens the door to more waste, legalising more dumping



of unwanted dead fish overboard. Valuable fish that could've been left swimming in our waters will instead be wasted, in an attempt to reduce "unnecessary costs" for commercial fishers.

Legalising dumping and discarding undermines any incentive for fishers to transition to more selective fishing methods. This means more trawling along our coastline, not less.

The Minister wants to also shut us out from having a say in changes to commercial catch limits for up to five years. This means less oversight and less accountability. Decision making can happen behind closed doors, without any public input.

The marine environment is dynamic and lots can change in five years. Depletion creeps up on you. You don't realise things have changed until they are much worse and there's not even enough fish to feed the family after a day's fishing.

Even now we can't gather crayfish from Northland, the scallop fishery is closed, and where have our john dory gone?

We don't want families waiting up to a decade for corrective management changes to be applied. By then the kids have grown up and lost their fascination with fishing and spending time with us on or near the water.

We can expect another round of public consultation on the Bill. This will be our last real chance to submit and influence MPs to make meaningful changes to the Bill before it becomes law.

The Bill expects Kiwis to accept the leftovers of a degraded marine environment and a broken quota management system. We say Kill the whole Bill. Now.

To make a submission visit www.legasea.co.nz or www.parliament.nz or reach out to myself or Mark James here in Whangamata, we have until April 29th to make a stand for our oceans future!

- Phil Keogh

Stars that keep shining

Volunteers play a very important role in our community, they are the oil that keeps the big cogs turning and help make our town a better place to live. They are caring, kind and capable.

In each edition we will catch up with a volunteer and ask them a few questions.

This edition we welcome Jackie Scott from the Hato Hone St John Opportunity Shop in Whangamata.

Q. How long have you been helping out here Jackie?

A. I joined just after the shop opened 11 years ago.

Q. How does this organisation benefit our community?

A. We provide funding for the essential St John's Health Shuttle service in Whangamata.

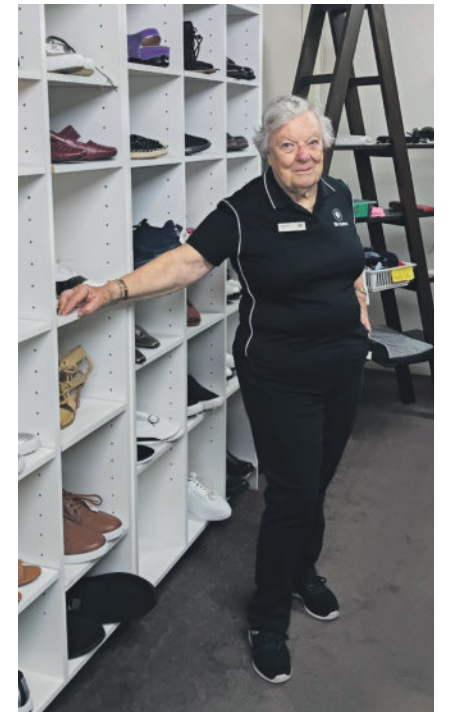
Q. What do you enjoy most about contributing here?

A. I enjoy the companionship of the other workers here, they are a great bunch. It's an ideal way to meet people.

Q. Have you had experiences that stand out for you?

A. I particularly like the fact that we have regular return customers, some daily and some weekly. I get to know them well.

Q. Do you have a specific role here or are you a multi tasker?



A. I started off being the shoe lady, but my work has expanded to hats, belts, handbags etc. I answer to any of those titles except bag lady.

Q. If you can't help here on any particular day is there always someone else to call on to take your place?

A. Yes, we have thirty six volunteers and most of us have flexibility with our time.

Thanks Jackie, you are a star.

What matters most to you?

We're asking for your thoughts on some tough choices to help keep rates affordable for 2026/27.

To do that, we're putting several trade-offs on the table:

<p>reducing mowing and garden maintenance</p>	<p>changing opening hours at some Refuse and Recycling Transfer Stations</p>
<p>increasing fees and introducing new charges</p>	<p>reducing selected rates remissions</p>

We know these aren't easy choices, and each one has an impact. That's why it's so important we hear from you.

Feedback is open now until **Tuesday 28 April.**

Scan the code or visit our website to learn more and share your feedback.

Whangamata SERVICE CENTRE

Auto SUPER SHOPPES
NZ's PREMIUM AUTOMOTIVE CENTRES

Full Mechanical Repairs, Lubrications and Services, WOFs, Tyres, Tune ups, Batteries, Wheel alignments, Diagnostics.

Scan Tool.

AA Breakdown services

First Assistance Breakdown services

P. 07 865 9435 • 201 Aickin Road, Whangamata

M. 027 608 5770 • E. Info@autosupershoppewhangamata.co.nz

Our Coromandel



News from Thames-Coromandel District Council

17 April 2026

Celebrating the best of Hauraki-Coromandel Business

Excitement is building for the Hauraki Coromandel Business Awards, with a fantastic group of sponsors coming on board to help recognise and celebrate the businesses that make our region thrive.

- Naming sponsor: Claymark
- Media sponsor: CFM
- Platinum sponsor: Craigs Investment Partners
- Gold sponsors: CooperAitken, Pearl Bird Limited (Mei's Dumpling) and Harkness Henry
- Silver sponsor: Gastronomics

With the support of these sponsors, the awards will shine a spotlight on the innovation, resilience and enterprise that drive our local economy and contribute to the vibrancy of Hauraki-Coromandel.

Thames-Coromandel District Mayor Peter Revell says our Council is proud to once again partner with Hauraki District Council and the wider business community.



From left to right: Thames-Coromandel District Mayor Peter Revell, Paul Trow - Thames Claymark Site Manager and Hauraki District Mayor Toby Adams.

“Our Council is proud to once again join with Hauraki District Council, Claymark, CFM and our many generous sponsors to celebrate the businesses that drive the heartbeat of Hauraki-Coromandel. We’re honoured to stand alongside the people and enterprises who continue to shape a strong and successful future for us all.”

Hauraki District Mayor Toby Adams also acknowledges the crucial role sponsors play in making the awards possible.

“On behalf of Hauraki District Council, I want to extend a massive thank you to our sponsors for their generous support of the Business Awards. These events simply wouldn’t happen without businesses and organisations stepping forward to back them. Your commitment helps us celebrate the innovation, resilience and success of our local business community, and we are incredibly grateful for your partnership in making these awards possible.”

Our Economic Development Team will be attending upcoming Business After 5 events across the district to talk about the awards, answer questions and encourage nominations. Come along to your local event at 5pm on the following dates to find out more:

- Tairua: 14 April at Pepe Café
- Coromandel-Colville: 29 April at Combined Clubs
- Mercury Bay: 12 May (location TBC)
- Paeroa: 21 May at The Refinery
- Whangamatā: 9 June (location TBC)
- Thames: 2 July (location TBC)

Nominations for the Hauraki Coromandel Business Awards open on 1 June, with the awards night taking place on 15 October 2026 at the Thames War Memorial Civic Centre.

The event is expected to bring together around 150 business leaders from across Hauraki, Coromandel and the wider Waikato region for an evening of celebration, connection and recognition. Find out more at tcdc.govt.nz/HCBA

What's happening Anzac weekend?



OFFICES | DISTRICT LIBRARIES

Our offices (including AA services) and district libraries will be closed from Saturday 25 April (Anzac Day) to Monday 27 April (observed public holiday). You can still reach us 24/7 at 07 868 0200 or customer.services@tcdc.govt.nz



DOG RESTRICTIONS

Please keep your dog on a lead in urban areas such as town centres and roads. Look out for our traffic light signage and check the rules in your area at tcdc.govt.nz/dogownerguide



ALCOHOL BANS

Alcohol bans are in place over the Anzac long weekend from 4pm on Friday 24 April to 4pm on Monday 27 April. Check out tcdc.govt.nz/alcoholcontrol



ANZAC DAY COMMEMORATIONS SATURDAY 25 APRIL



WHANGAMATĀ: 6.30am Sunrise Flag-Raising and Service

– assemble at Whangamatā Surf Club. Breakfast afterwards at Blackies in Williamson Park.

9am Mix and Mingle at Whangamatā RSA

9.30am Beach Hop vehicles will drive RSA members to the parade start.

10.20am Civic Parade led by the Bay of Plenty Pipes and Drums from the Council Offices, Port Rd, Whangamatā.

11am Wreath-laying at Whangamatā War Memorial Hall, Port Rd, Whangamatā, followed by a light lunch and entertainment at the RSA Clubrooms.

PĀUANUI: 6am Dawn Service – assemble at 5.45am on the beach adjacent to the Surf Life Saving Club. Paying breakfast afterwards at Pāuanui Club, 31 Sheppard Ave, Pāuanui.

TAIRUA: 6am Dawn Service – assemble at 5.45am at the Soldiers Wall, Tairua Ex Servicemen’s Cemetery, Main Rd, Tairua.

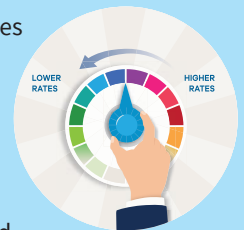
Returned service personnel are asked to wear their medals and decorations. Descendants of returned service personnel marching in the parades are asked to wear medals on the right upper portion of their clothing.

TOUGH CHOICES FOR LOWER RATES

We’re taking our “Tough choices for lower rates” online.

Online town hall 7pm, Thursday 23 April

You can join from your phone or computer on Microsoft Teams with no account needed. You’ll be able to ask questions in the chat, with staff and Elected Members there to respond. Find out more and get the link: tcdc.govt.nz/AP2627



RUBBISH AND RECYCLING COLLECTIONS FOLLOWING ANZAC DAY



TUESDAY 28 APRIL
Whangamatā South

WEDNESDAY 29 APRIL
Whangamatā North
Onemana & Ōpoutere

FRIDAY 1 MAY
Tairua

SATURDAY 2 MAY
Pāuanui

ALL REFUSE AND RECYCLING TRANSFER STATIONS ARE CLOSED UNTIL 1 PM ON SATURDAY 25 APRIL. OPEN ON SUNDAY 26 AND MONDAY 27, NORMAL HOURS.

OUR NEXT WHANGAMATĀ COMMUNITY BOARD MEETING WILL BE 10AM TUESDAY 21 APRIL AT THE WHANGAMATĀ SERVICE CENTRE, 620 PORT RD

@ThamesCoromandelDistrictCouncil
 coromandel_tcdc
 Get our free eNewsletters!
www.tcdc.govt.nz/subscribe

tcdc.govt.nz
customer.services@tcdc.govt.nz
Private Bag, 515 Mackay St, Thames
Phone: 07 868 0200

Waihi NEWS

Kiwi Environmentalist to ring OceanaGold opening bell at New York Stock Exchange

New Zealand-founded gold mining company OceanaGold, last week marked a significant milestone on the global stage when it listed on the New York Stock Exchange on Wednesday, 8 April (NZT).

Chief Executive Gerard Bond invited two frontline New Zealand employees to join him on the podium for the bell-ringing ceremony.

Waihi-based environmental leader Cassie MacArthur represented the company's commitment to sustainability. MacArthur played a key role in developing a biodiversity and enhancement plan which includes one of the world's most endangered amphibians, Archey's frog, as part of OceanaGold's Fast-track consent approval secured in December 2025

She will be joined by Dunedin's

Quenton Johnson, whose technical innovation helped extend the operational life of the Macraes mine at a critical point in its history.

Their inclusion reflects the human side of OceanaGold's journey, recognising the contributions of everyday New Zealanders to an internationally significant success story.

OceanaGold, began as a small mining operation in Dunedin in 1990, will celebrate the occasion by ringing the NYSE opening bell, a rare achievement for a New Zealand-founded company.

The milestone highlights both the company's growth and the ongoing importance of New Zealand's gold mining sector, particularly amid rising global gold prices and renewed interest in domestic mining activity.

OceanaGold continues to maintain a strong presence in New Zealand, with major operations at Macraes

in North Otago and Waihi, where the recently-consented Waihi North Project is now underway.



Cassie McArthur.

Owens Flooring

We Have All Your Flooring Needs Covered
Flooring Sales & Installation • Domestic & Commercial

Carpets • Vinyls • Laminate & Timber Planking





Showroom: 5/57 Wilson Road at Waihi Beach
07 863 5723 / 027 233 7277
sales@owensflooring.co.nz • www.owensflooring.co.nz

We provide a wide range of services for your Companion Animals:

- 24 Hour Emergency Care
- In-House Blood Analysis
- Health Checks
- Digital Xray
- Vaccinations
- Ultrasound
- House Calls
- General & Emergency Surgery
- Puppy Preschool
- Orthopaedic Surgery
- Dentistry







0800 267 683

info@corovets.co.nz

www.corovets.co.nz

Tairua Clinic:
1 Wharf Road, Tairua

Whangamata Clinic:
215 Aickin Road, Whangamata

Waihi Clinic:
10 Mueller St, Waihi

OceanaGold Update

17th April 2026



Water Treatment Plant upgrade and on-site water processing

As part of the WNP consenting process, an independent Freshwater Ecological Assessment was produced by Boffa Miskell.

The report was provided to review the effects of the proposed WNP on wetland and freshwater ecological values, drawing from existing long-term monitoring data, from a range of sources including the National Institute of Water and Atmospheric Research (NIWA), Waikato Regional Council, the Ministry for the Environment, and the Department of Conservation, among others.

Extract from the Waihi North Project Freshwater Ecological Assessment

“ Annual monitoring of the Ohinemuri River downstream of the mining operations water treatment plant shows that ecological values have remained stable and persistent since operations at OceanaGold Waihi commenced... There is no evidence that the discharge from the OceanaGold Waihi water treatment plant (WTP) to the Ohinemuri River has caused any detrimental effects to the ecological values of the Ohinemuri River, and the ecological values have been maintained as anticipated by the criteria as set out in the consent conditions. ”

Ian Boothroyd
Senior Principal Ecologist. Boffa Miskell Limited.



As part of early works for the Waihi North Project, the Water Treatment Plant is being upgraded to manage additional water from the Wharekirauponga Underground Mine.

Aquatic life protected

Approximately four million cubic metres of treated water is discharged by our Waihi Operation each year, with independent analysis confirming the water meets strict quality limit standards before release. These limits are designed to protect aquatic life and downstream users and are based on recognised international guidelines and form part of consent conditions issued by Waikato Regional Council. Water quality and aquatic life in the Ohinemuri River and its tributaries have been monitored since 1981, prior to the commencement of modern mining operations.



SCAN THIS QR CODE TO READ THE FULL TECHNICAL REPORT

New Barry Road subdivision

OceanaGold is planning a new residential subdivision on our Barry Road property in anticipation of increased workforce requirements linked to the Waihi North Project. The subdivision is currently progressing through the planning and consenting phase.



Example render of the proposed housing.

Located close to town and within walking distance of local shops, services and schools, the subdivision will offer a convenient and well-connected place to live. New residents contribute to the vibrancy of Waihi by supporting local retailers, hospitality businesses, tradies, and service providers.

If approved, the proposed subdivision will include 10 permanent homes, each on its own title, and designed to fit within the existing character of the town. Three of the sections will also include a self-contained

granny flat. These homes are not temporary or cabin-style accommodation, their quality design reflects OceanaGold's long-term investment in Waihi and its community.

While the development will help meet future housing needs for OceanaGold's workforce, its benefits extend beyond the company. The homes will add to Waihi's long-term housing stock, supporting wider community needs as the town continues to grow.

Investing in our host community



Sponsorship application form
www.waihigold.co.nz/sponsorship-donations

Sponsorships and donations approved in March

Auckland Rescue Helicopter	Purchase new stretchers	\$10,000.00
Waihi Community Resource Centre	Funding after-school care programme	\$5,636.27
Trees for Survival	Potting mix and plant seeds for schools	\$3,241.90
Waihi Lions Art & Street Festival	Event advertising costs	\$560.00
Philips Search & Rescue Trust	Mindray portable ultrasound	\$10,000.00
Aerocool Rescue Helicopter	Mindray portable ultrasound	\$10,000.00
Karangahake Softball	Purchase of club equipment	\$3,341.36
	TOTAL	\$42,779.53



If you have any questions or concerns, please contact us

Community Engagement Line: 0800 924 444 | Project Information Office: 86 Seddon St., Waihi
Email us via our website: www.waihigold.co.nz

Please note: We are not currently blasting in the Martha Open Pit. Any changes to this will be notified.

Waihi NEWS

Funding fight for storm-ravaged Hauraki Rail Trail repair



A bid for funding to fix the storm-damaged Hauraki Rail Trail has been knocked back, leaving those behind it to find two to three million dollars.

Multiple parts of the Great Ride cycle trail were hammered in January storms, with damage that brought the group behind it to tears.

This time, the worst destruction was in Section C of the trail, which runs from Paeroa to Waihi, specifically in an 8km stretch along the Karangahake Gorge and tunnel.

The tunnel was flooded for only the second time in its history as water levels exceeded the 7.8 metre height of Cyclone Gabrielle.

"Not only did it get flooded, it actually tore the surface completely out," Hauraki Rail Trail chief executive Diane Drummond said.

"We'd only just finished paying for the Gabrielle repairs in December, so only three weeks later when we saw the scale of the damage, it brought us to tears. It wasn't a happy place to be."

Damage like this caused lengthy closures for the rail trail. Finding funding for the extensive repairs has proved troublesome as well.

Drummond said MBIE estimated the track closure costs the local economy \$20,000 a day from a loss in direct spending in local businesses.

That number probably gets closer to \$30,000 during periods like Easter.

"If we've been closed for eight weeks... it's about \$1.4 - \$1.5 million the community has lost," Drummond said.

- RNZ

Waihi Beach Road closure

"A small section of Waihi Beach Road has flushed which means that the skid resistance of the road surface is less than desirable.

"Until a treatment can be applied the road section is covered by a 50kph Temporary Speed Limit which is appropriate for the conditions but may be frustrating

for motorists.

"Staff are currently investigating remedial treatments and are confident that the issue will be resolved in the next 6-8 weeks, subject to favourable weather."

- Western Bay of Plenty District Council Director Transportation, Calum McLean.



Be Warm this Winter



HEAT PUMPS



Discover the perfect harmony of efficiency and comfort with our wide range of heat pumps and air conditioners. Call in and see the team for FREE quotes, Interest FREE terms and the extensive range of Heat Pump solutions.

100% HOME WAIHI

24 ROSEMONT ROAD, WAIHI • PHONE 07 863 8207
email waihi100@xtra.co.nz • www.100percent.co.nz

We've Got Your Back

We're always checking price
Talk to us.



Waihi NEWS

End of an era: La Diva closes after 15 stylish years

After more than 15 years of bringing fashion, confidence, and community to Waihi, beloved women's clothing store La Diva has officially closed its doors.

Opened in October 2010 by Alena Wilkinson and her mother Jenny, La Diva began its journey in a small shop next door to its final location. What started as a modest venture quickly grew, as demand for stylish, accessible women's clothing in Waihi proved strong. Before long, the business expanded into a larger space, becoming a staple of the local retail scene.

For Alena, the decision to open a clothing store marked a shift from her background in interiors, but one driven by both passion and a clear gap in the local market. "At the time, Waihi really needed a women's clothing store," she reflects.

In those early years, life behind the counter was anything but quiet. As a busy mum raising two young boys, aged seven and four at the time, Alena balanced business ownership with family life. After-school hours often meant the boys were in-store too — playing hide-and-seek between racks or tossing rugby balls — adding a lively and personal touch to the shop's atmosphere. "It was a juggling act," Alena says, "but



La Diva also gave me a sense of femininity in an otherwise all-male household."

Over the years, La Diva evolved alongside changing fashion trends, introducing new brands and styles while maintaining its focus on

helping women feel confident and well-dressed. The store became more than just a place to shop — it was a destination where customers found outfits for life's special moments, big and small.

Since announcing the closure in

mid-February, Alena has been overwhelmed by the response from the community. Customers have shared heartfelt messages and memories, reflecting on the many occasions La Diva helped them prepare for — from celebrations to everyday confidence boosts.

Alena credits the longevity of the business to the unwavering support of her loyal customers and the dedication of her staff over the years.

"We close the store with a full heart," she says.

She hopes the community continues to rally behind local businesses. "We need to support our local stores and businesses. Waihi's CBD is the face of our town — we want people passing through to stop, enjoy a nice meal, and explore the unique retail offerings you don't find in a world of mass-produced goods. It's about the bigger picture. We want to promote Waihi as a unique place to work, visit, and live."

Though La Diva's doors may now be shut, its legacy of style, connection, and community spirit will remain a fond part of Waihi's story.

La Diva will still have remaining stock available to purchase online @ www.ladiva.co.nz

Shorter days, bigger deals.

Up to 50% off Selected Sleepyhead Beds.

<p>ONLY \$449</p> <p>Elements Wave 3 'Grab & Go' Queen Mattress</p> <p>Available rolled in a bag for easy transport. Grab one in-store.</p>	<p>Everyday Low Price.</p>	<p>ONLY \$1,099</p> <p>Wonderest Sleep Easy 3 Queen Bed</p> <p>A durable bed with the comfort of pocket spring technology.</p>
<p>NOW \$1,679</p> <p>Chiropractic Epic Sleep Queen Bed</p> <p>Featuring Torquezone, a coil spring system for targeted postural support.</p>	<p>30% off.</p>	<p>NOW FROM \$2,699</p> <p>Chiropractic HD Radiate Queen Bed</p> <p>With Titanium: GelFoam for balanced temperature and support while you sleep.</p>

94 Seddon St, Waihi • 07 863 8787
419 Port Rd, Whangamata • 07 865 9027
bedsrus.co.nz

30
Day comfort guarantee.

Locally owned & operated.

Sleepyhead[®]
90
YEARS

Where dreams begin.

Big Autumn Sale ends 28.04.26. Discount offers apply to selected beds and bedding only, prices as marked. Offers exclude Everyday Dream prices, run outs, clearance stock (unless otherwise stated) and not to be used in conjunction with any other offer. See in-store for details. 30-Day Comfort Guarantee available for in-store purchases only. We reserve the right to correct errors and misprints and to change product specifications. All products are advertised in good faith and will be available, except in circumstances beyond our control. Product ranges vary between stores and some products are available in selected stores only.

Waihi NEWS

Waihi arts on show

A great display of local artisans gathered last weekend at the Waihi Memorial Hall. It showcased some extraordinary talent with demonstrations and workshops. Thanks to the Lions Support it was a great atmosphere for all ages engaging with some hands on art, some on their faces too! An incredible group gave lookers - on a treat with kettle drums - "Steel 'n' Beat" such a great vibe!

Over our coming editions we will catch up with some of these fascinating locals, watch this space.

- Jennie Black, photos by Mark James



TYRE HQ

WAIHI

SAVE ON FUEL NOW!

ALIGNMENTS + ECO TYRES

ON SALE NOW!

KUMHO ECOWING
ES31 FUEL SAVING TYRES

- ✓ KUMHO ECOWING ES31 FUEL SAVING TYRES
- ✓ PRECISION WHEEL ALIGNMENTS
- ✓ TYRE PRESSURE CHECKS

GOODRIDE
Performance Tyres

KUMHO TYRES

afterpay

PRECISION WHEEL ALIGNMENT

07 863 9211 | www.tyrehq.co.nz

WAIHI BEACH RSA

The Club with one of the BEST VIEWS in the land!

ANZAC Day 2026

- 0600 hrs ~ Dawn Parade & Service, Beach RSA
- 0630 hrs ~ Breakfast buffet in Gunners, Beach RSA
- 0800 hrs ~ Wreath laying ceremony - Waihi Cemetery
- 0900 hrs ~ Waihi Heritage Vision & Tunneling Company Descendants at Tunnellers Memorial, Gilmour Reserve, Waihi
- 1100 hrs ~ Memorial Service at Waihi Memorial Hall (1030hrs Muster - 1045hrs March from Waihi RSA)

We will remember them

www.wbrsa.co.nz

99 Beach Road

07 863 5688

Walk or cycle across the river – and leave your mark

A 120-metre walking and cycling suspension bridge across the Tairua River is moving closer to reality – and the public now has the chance to be a permanent part of it.

The “Build A Bridge” campaign has launched, raising funds for the bridge, which will become the centrepiece of a 13km off-road trail connecting Pauanui and Tairua. The trail will provide safer off-road walking and cycling routes, recreational and environmental benefits, and a boost to local businesses.

BE PART OF THE BRIDGE

Donors — individuals, charitable trusts, or businesses — can contribute at a level that suits them. Pledges start at \$2,000 for a single plank, and naming sponsorship opportunities are also available. Construction is expected to start this summer, depending on funding.

Hikuai District Trust Chair Derrick Adams says the trail has always been “the people’s trail,” built, maintained, and partly funded through local generosity.

“The bridge will be a fantastic addition to the Eastern Coromandel’s trail network — a resource locals and visitors alike can



Andy Bolton is enthused by the project.

be proud of,” Mr Adams says.

“We started with 165 planks to sell and already have a cornerstone partner and early donors covering around 30% of the cost. We’re confident the community will help

us get the rest of the way. Every contribution, big or small, takes us closer to making this dream a reality.”

The Trail Blazers programme also allows supporters to make regular

contributions, while others can make one-off donations when they’re able. Full donation options are available at www.tairuarivertrail.org.nz/donate

TRAIL PROGRESS AND TIMELINE

Volunteers and Storms Contracting have built 1.5km of trail at Tanners Farm, with another 1.2km underway towards Swampy Stream. Once completed, this section will connect to the suspension bridge, creating an uninterrupted 10km trail from Pauanui Waterways to Swampy Stream Bridge.

Trail construction will continue downriver towards Tairua, including new boardwalk sections, eventually finishing near Tairua Primary School on Petley Parade. The trail is fully consented, and local communities have shown strong support.

“With the continued generosity of local donors, we aim to have the trail fully completed in the next few years,” Mr Adams says.

UPCOMING GALA NIGHT

Supporters and the public are invited to a “Gatsby Las Vegas” gala night at Puka Park in Pauanui on Saturday 30 May. Tickets are available from the Pauanui Information Centre or by emailing patcourtney@xtra.co.nz.

Sports results

500 CARD CLUB

We play every Wednesday 1-4pm at the RSA. Come along and join us.

8 April: We had 28 players.

Winner & highest score: Graeme Allen - \$20 voucher

Runner-up: Lloyd May - \$10 voucher

Average score: Leticia Murray - \$10 voucher

Lowest score: Colette Slack - bar of chocolate

Raffle winner: Robyne Curd - \$25 New World voucher

8 April: Winner & highest score: Lloyd May - \$20 voucher

Runner-up: Lyn Dorreen - \$10 voucher

Average score: Maureen Barlow - \$10 voucher

Lowest score: Denise Boston - bar of chocolate

Raffle winner: Chris Hepi - \$25 New World voucher

WHANGAMATA CLUB MAHJONG

10 April: We had 49 players with three tables of three.

Congratulations to the winners:

1st: Fiona Volkner with 55 points

2nd: Tina Palmer with 44 points

3rd: Alison Gee with 42 points

The Lucky Number was 13. Two players had this number and the one drawn was Kathy Shanks.

Send us your team's/club's results! Email whangamataneews@gmail.com

COMING UP AT

S M O K Y P A L L E T

F R E E H O U S E



SPLIT
THE G

LIVE
MUSIC

FRIDAY, BAND
5PM-8PM
SATURDAY, DJ
9PM-LATE
SUNDAY, BAND
4PM-7PM



@Smokypalletwhanga



@Smokypallet



Richmond Villas

LIFESTYLE VILLAGE

Living the lifestyle, loving the choice...



**A Lifestyle Village in Thames on the Coromandel
2 BEDROOM VILLAS NOW AVAILABLE!**

All villas and apartments are within walking distance of Thames' shops, cafes, and walkways. The perfect location to enjoy your fun-filled retirement.



Our spacious villas provide you with plenty of warmth and light and garden patios to enjoy.

There are a variety of layouts including 2 bedroom villas, and 2 bedrooms with a double garage. All residents enjoy the use of the Village Community Lodge and participation in all activities and amenities at your leisure.

ALL ENQUIRIES WELCOME, VIEW OUR VILLA OPTIONS TODAY!

Phone us to view by appointment!
Come and experience the difference!

82 Richmond St, Thames

0800 868 5484

richmondvillas.co.nz

Hello Friday Fashion Parade



Crikey, that was close! A mid-morning shower in Pauanui cleared just in time for the Hello Friday biannual fashion parade. Seats were quickly dried off for the eager crowd, who weren't deterred by the rain.

Twelve models—locals and loyal Hello Friday customers—took to the pavement at the Village Centre, showcasing this winter's top fashion picks for both men and women. The parade showcased about 80 different outfits, with colour ways for all with rich tones of merlot and chocolate featuring strongly, alongside barrel-leg jeans and pants as key styling pieces.

Mandy and Paula once again proved they are a one-stop shop for swimwear, activewear, and effortlessly stylish pieces that take you from work to the weekend—and everywhere in between.

If you missed the parade, head to their Facebook page, [hellofridaypauanui](https://www.facebook.com/hellofridaypauanui), to check out all the photos.

A huge thank you to the wonderful models, helpers, neighbouring stores, and of course the fantastic crowd—without you all, it simply wouldn't happen.

- Photos by Pat Courtney



Simply Stunning

267i Opoutere Road, Opoutere

A serene sanctuary for those who appreciate sophistication without ceremony architecturally refined, understated, & quietly luxurious. Nestled amidst nature, this private oasis offers spacious living & a versatile floor plan designed for effortless day-to-day living & considered entertaining.

Bedrooms & living spaces frame sweeping harbour & ocean vistas, inviting the sea to become part of daily life. Interiors reveal generosity through clean lines, thoughtful proportions a restrained palette that quietly rewards attention to detail. Practical luxuries include a lift, spa, workshop, & ample storage for all your pursuits flexibility for a cellar or additional space for guest accommodation.

For lovers of the outdoors, the lifestyle is exceptional: cast a line from the harbour or sandspit for snapper & flounder, venture further by boat, or enjoy self-sufficiency with raised garden beds. Sparkling waters, white sands, & a calm, private setting for a perfect escape that feels as effortless as it is inspiring.

Move now – make this your safe haven.

AUCTION: Onsite 1pm Sunday 26 April 2026

Refer: oneroof.co.nz/43006832

Call for inspection



Lyn Lockwood 027 271 5859

lyn@hallmark-realestate.co.nz

Licensed Agent REA2008 & MRIENZ

HALLMARK
REAL ESTATE

Live your best life in *paradise*



Willson Gardens

offer **2 bed fully refurbished units** with internal garage within peaceful picturesque gardens

OR

Supported living in our **independent 1 bed apartment** with garden access and parking at your door.

On site **Moana House facility** provides **Rest Home** and **Hospital level** of care.

Contact us for more information on 07 865 9643

For more information, please phone (07) 865 9643

Deborah Padfield (General Manager)

353 Tairua Road, Whangamata

MOANA HOUSE & VILLAGE

He whare ahuru – a caring safe place



Whangamatā 704 Otahu Road

Just metres from the sand

Positioned on a landmark 504sqm (more or less) freehold corner site only metres from the ocean and close to the estuary. This property presents a compelling opportunity in tightly held Whangamatā. Originally built in 1968 and expanded over time, the split-level home enjoys protected ocean views across the road and down through the adjacent walkway. An outlook that enhances both lifestyle and long-term value. The home offers three formal bedrooms, two bathrooms, plus an additional lower-level shower and toilet (ideal after a day at the beach). Three separate living areas provide versatility for extended family living, holiday entertaining, or future reconfiguration. Internal access garaging is complemented by a separate single garage, ensuring ample space for vehicles, watercraft and beach equipment.

Opportunities this close to the beach with established view corridors are increasingly scarce.

bayleys.co.nz/**2221589**

504_{sqm} 3 3 2

Auction (unless sold prior) 11am, Thu 23 Apr 2026

96 Ulster Street, Hamilton

View by appointment

Dale Sholson 021 636 519

dale.sholson@bayleys.co.nz

Gordon McGregor 021 998 810

gordon.mcgregor@bayleys.co.nz

M H REALTY LIMITED, BAYLEYS, LICENSED UNDER THE REA ACT 2008



Whangamatā 137 Patuwai Drive

Now priced - Secure your waterfront position

Positioned right on the water's edge, 137 Patuwai Drive commands a majestic estuary front-row setting, where calm waters and ever-changing tides create a truly captivating backdrop. Protected by the stunning reserve directly in front, the serene, uninterrupted outlook is secured - a view that will remain forever. Step outside your front door to the estuary and immerse yourself in this natural playground. Swim, kayak, paddle board, or simply savour the changing colours of sunset dancing across the water. Set on a generous 670sqm (more or less) site with a substantial 160sqm (more or less) home, this is a property rich in scale and scope. The home has been lovingly enjoyed by four generations of one family and is thoughtfully designed for casual living, while also presenting significant opportunity to renovate or further develop to truly capitalise on this exceptional waterfront position.

bayleys.co.nz/**2221568**

670_{sqm} 4 2 6

Asking Price \$2,895,000

View by appointment

Jerry Waddington 027 314 0707

jerry.waddington@bayleys.co.nz

M H REALTY LIMITED, BAYLEYS, LICENSED UNDER THE REA ACT 2008



Whangamata Real Estate

WHANGAMATA REAL ESTATE 2024 LTD (LICENSED REAA 2008)

Don't just dream it, live it



ENQUIRIES
OVER
\$799,000

Walk to Estuary & Beach

115A Papanui Road, Whangamata

2 🚗 1 🚿 1 🚗

- Sunny open-plan living with vaulted ceilings
- Seamless indoor-outdoor flow to deck and veranda
- Mezzanine level with skylight providing extra space
- Single garage to store the beach toys
- Ideal as a holiday bach or permanent residence
- Easy walk to Otahu Estuary and Whangamata Beach
- Updated Kitchen
- Recently painted and freshened up
- A great entry level opportunity in a quiet location



Check QR Code for viewing options



Chris & Katie Speedy
M 021 747 901 & 021 382 022
View Listing whanga.co/8588



NOW
\$1,285,000

Relaxed Beachside Living

409 Tamaki Road, Whangamata

3 🚗 2 🚿 2 🚗

- Low-maintenance and superbly positioned
- A short stroll from the town centre and the main beach
- The master bedroom upstairs and features a walk-through robe and ensuite
- Downstairs includes 2 bedrooms & bathroom
- Open-plan kitchen, dining and living with indoor-outdoor flow
- Sunny private deck with shade awning
- The double internal-access garage is lined and carpeted



Check QR Code for viewing options



Sarah Speedy
M 027 843 4013
View Listing whanga.co/8607



\$1,465,000

Flexible Beach Living

215A Ocean Road, Whangamata

3 🚗 2 🚿

- Open-plan kitchen, living, and dining
- Main bedroom with walk-in wardrobe and ensuite
- Low-maintenance, lock-and-leave living
- Flexible layout with additional living space
- Barn door allows separation for guests or kids
- Off-street parking
- Garden shed for storage
- Ideal holiday bach or comfortable permanent home
- Recently completed, modern build
- Walk to Whangamata Beach and town



Check QR Code for viewing options



Chris & Katie Speedy
M 021 747 901 & 021 382 022
View Listing whanga.co/8592





Whangamata Real Estate

WHANGAMATA REAL ESTATE 2024 LTD (LICENSED REAA 2008)

Don't just dream it, live it



NOW \$905,000



Welcome Home

111 Tobie Place, Whangamata

3+ 1 1

- Quiet, family-friendly street
- Generous 914sqm section
- Private outlook bordering a recreational reserve
- Recently renovated home ready to move in and enjoy
- Easy ground-floor living with great indoor-outdoor flow
- Sunny, spacious backyard ideal for kids and pets
- Peaceful setting with plenty of potential
- Comfortable family home perfect for permanent living

Check QR Code for viewing options



Sarah Speedy
M 027 843 4013
View Listing whanga.co/8609



\$1,049,000



Fresh, Modern, Coastal Living

123 Park Avenue, Whangamata

4 2 1

- Quietly tucked away, backing onto tranquil bush
- Rear freehold half site offering privacy
- Renovated home blending comfort, space, and style
- Stylish designer kitchen at the heart of the home
- Single garage plus additional off-street parking
- Ample basement storage for all the toys
- Seamless indoor-outdoor flow perfect for relaxed beachside living

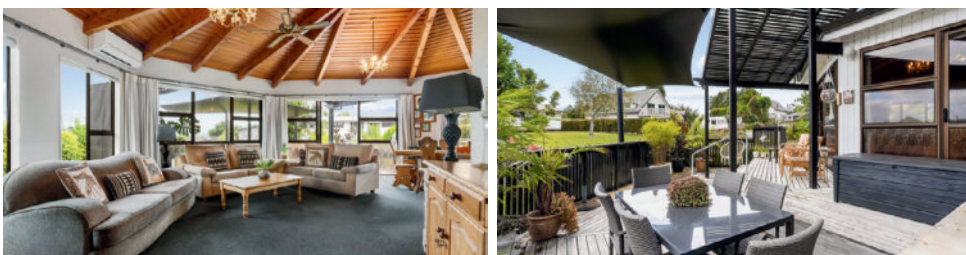
Check QR Code for viewing options



Sarah Speedy & Jordan Dench
M 027 843 4013 & 021 053 0182
View Listing whanga.co/8612



ENQUIRIES OVER \$1,099,000



Timber Charm & Easy Living

203 Tirohanga Drive, Whangamata

3 2 2

- Warm and sunny north-facing aspect
- Feature timber ceiling adding character and charm
- Primary bedroom with ensuite and balcony
- Wood burner and heat pump
- Double garage with workshop
- Separate cabin - ideal for office, studio, or guests
- Good off-street parking
- Fully fenced section - 661sqm Freehold title

Check QR Code for viewing options



Sarah Speedy
M 027 843 4013
View Listing whanga.co/8610

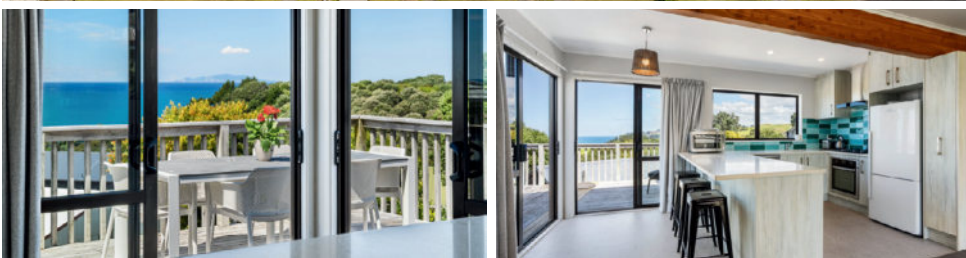




Whangamata Real Estate

WHANGAMATA REAL ESTATE 2024 LTD (LICENSED REAA 2008)

Don't just dream it, live it



Hilltop Holidays

441 Onemana Drive, Onemana

3+ 3

Deadline Sale (unless sold prior) all offers considered 3pm, 29 April 2026

- Panoramic ocean, island and rural views
- Modern kitchen and bathroom
- Generous open plan living
- Cosy wood burner
- Two bedroom cottage
- Separate sleepout & cabin
- Multiple outdoor entertaining options
- Freehold 593sqm full site

Check QR Code for viewing options



Sarah Speedy
M 027 843 4013
View Listing whanga.co/8618



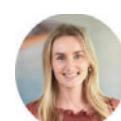
Retro Coastal Classic

101 Titiro Place, Onemana

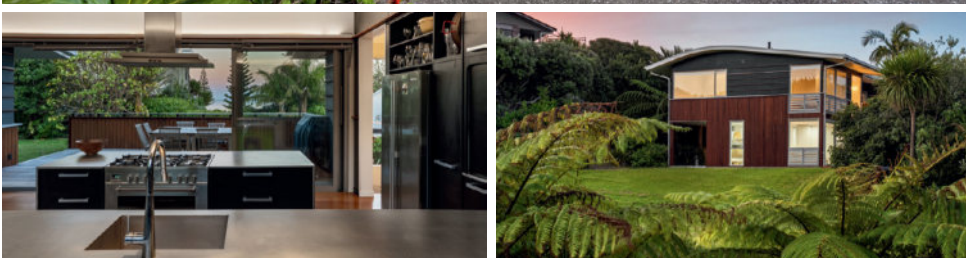
4 2 3

- Wide views across Onemana Beach
- Well-maintained 1970's dwelling full of retro charm
- Large, home with great proportions & potential
- 3 car garaging options
- Sunny conservatory with lift
- Two deck areas
- 641sqm corner site - freehold title
- Great floor plan
- Two separate entry ways

Check QR Code for viewing options



Sarah Speedy
M 027 843 4013
View Listing whanga.co/8613



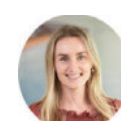
Architectural Escape

107 Russell Bruce Place, Onemana

4 3

- Architecturally designed by Hillary Priest, built in 2006
- Exceptional entertaining spaces with ocean view
- Sunny north-facing aspect
- Cosy separate lounge with gas fireplace
- Light-filled open-plan living
- Solid kwila flooring
- Quality fittings and finishes throughout
- Private, tropical gardens
- Large freehold 918sqm site (more or less)

Check QR Code for viewing options



Sarah Speedy
M 027 843 4013
View Listing whanga.co/8585





Whangamata Real Estate

WHANGAMATA REAL ESTATE 2024 LTD (LICENSED REAA 2008)

Don't just dream it, live it



\$1,520,000



Beach Road Bonus

303B Beach Road, Whangamata

2 🚗 1 🚲 1 🚗

- Views of the harbour and handy to the water's edge
- Stroll across the road for a swim at high tide
- Easy access for Kayaking or Paddle Boarding
- Elevated level site with easy access and off-street parking and a fully fenced yard
- 479sqm freehold title
- Open plan living with good connection to outdoors
- Dual decks giving all weather options

Check QR Code for viewing options



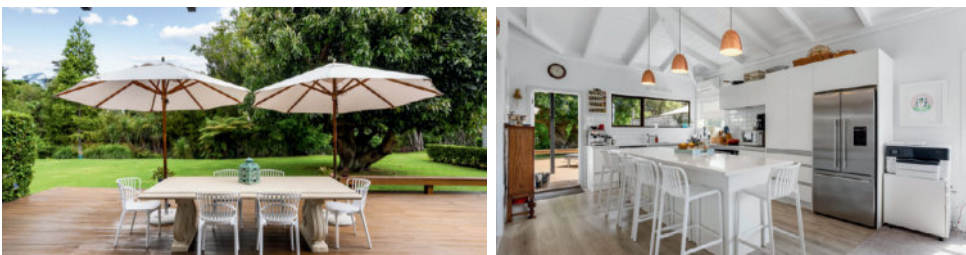
Sharon Laursen

M 027 662 3164

View Listing whanga.co/8611



PRICE BY NEG



The Great Entertainer

130 Moana Anu Anu Avenue, Whangamata

5 🚗 3 🚲 2 🚗

- 1357sqm freehold title located on the boundary of reserve
- Serene and natural outlook to bush, reserve and harbour
- Expansive outdoor entertainment area, deck and lawn
- Envious Entertainer's kitchen
- Open plan living area with dual lounges
- Multipurpose family room
- Dedicated games room complete with bar and pool table

Check QR Code for viewing options



Sharon Laursen

M 027 662 3164

View Listing whanga.co/8595



PRICE BY NEG



Size, Space, Surf & Sunshine

107 Rangī Avenue, Whangamata

4 🚗 2 🚲 1 🚗

- Freehold 809sqm full site
- Popular address near surf beach and estuary
- Open plan kitchen and living area flanked by dual decks
- Second lounge or games room (includes pool table)
- Master bedroom with private balcony
- Large garage and great storage
- Easy care grounds
- Great sun aspect
- Potential for future development

Check QR Code for viewing options



Sharon Laursen

M 027 662 3164

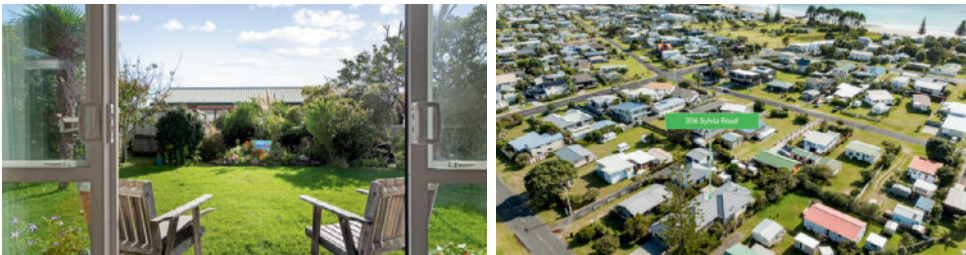
View Listing whanga.co/8568



Don't just dream it, live it



PRICE BY NEG



Single Level Sanctuary

306 Sylvia Road, Whangamata

4 🚗 2 🚗 2 🚗

- Single level ease with open plan living
- Great connection to gardens and lawn
- Central kitchen with butler's pantry
- Separate second lounge, reading room or office
- Excellent storage throughout
- Double glazed throughout
- Warmed by freestanding fire plus heat pump or cooled by aircon
- Additional level off street parking, suitable for boat or campervan
- Sunny aspect with ample natural light

Check QR Code for viewing options



Sharon Laurenson
M 027 662 3164
View Listing whanga.co/8624



DEADLINE SALE



Family Beach Retreat

230B Rangi Avenue, Whangamata

3 🚗 2 🚗 1 🚗

Deadline Sale (unless sold prior) all offers considered 3pm, 30 April 2026

- Spacious 588sqm freehold title
- Close to beach and estuary
- Open plan living well connected to outdoors
- Expansive north/east facing deck and lawn
- Basement garage/workshop and carport
- Handy to swimming, kayaking and leisurely walks
- A character holiday home or permanent abode

Check QR Code for viewing options



Sharon Laurenson
M 027 662 3164
View Listing whanga.co/8623



DEADLINE SALE



Crowd Pleaser

202 Beverley Terrace, Whangamata

3 🚗 2 🚗 1 🚗

Deadline Sale (unless sold prior) all offers considered 3pm, 30 April 2026

- Located in popular Beverley Terrace
- No roads to cross to get to the beach
- Handy to Town and Surf Club
- Relaxed ground floor living with excellent indoor / outdoor connection
- Expansive north facing deck and lawn area
- Modern kitchen central to multi dining spaces
- Open plan lounge with wood burner
- Garage with auto door

Check QR Code for viewing options



Sharon Laurenson
M 027 662 3164
View Listing whanga.co/8622





Whangamata Real Estate

WHANGAMATA REAL ESTATE 2024 LTD (LICENSED REAA 2008)

Don't just dream it, live it



ENQUIRY
OVER
\$985,000

Relax & Enjoy

304B Sylvia Road, Whangamata

2 🚗 1 🚿 1 🚗

- Prime central beach location with great presentation
- Separate serviced garage
- Open plan living with direct access to deck
- Easy access to Surf Club & estuary beach

Check QR Code for viewing options



Colin Thompson

M 021 723 723

View Listing whanga.co/8617



\$1,195,000

Motivated Vendor has Purchased

115 Chevron Crescent, Whangamata

4 🚗 2 🚿 1 🚗

- Permanent ocean and island views
- Peaceful elevated cul-de-sac location
- Modern kitchen with excellent views
- Convenient lift access from garaging

Check QR Code for viewing options



Colin Thompson

M 021 723 723

View Listing whanga.co/8573



\$1,395,000

200a Harbour View Road

Harbour Attraction

200A Harbour View Road, Whangamata

3 🚗 2 🚿 1 🚗

- Prime harbour, ocean beach location
- 3 double bedrooms + rumpus area
- Exterior reclad including double glazing
- Single garage plus carport

Check QR Code for viewing options



Colin Thompson

M 021 723 723

View Listing whanga.co/8578



ENQUIRIES
OVER
\$840,000

It's a Given

303B Given Avenue, Whangamata

3 🚗 1 🚿 🚗

- 401sqm freehold title
- Single level dwelling with dual decks
- Appeals as a holiday home or rental option
- Sunny aspect and popular location

Check QR Code for viewing options



Sharon Laurenson

M 027 662 3164

View Listing whanga.co/8572



\$905,000

511c Ocean Road

Beachside Sweetie

511C Ocean Road, Whangamata

2 🚗 1 🚿

- Overlooking Williamson Park and Surf Beach
- Cross the road for easy access to Beach and swim
- Refurbished unit
- Landscaped grounds & patio area

Check QR Code for viewing options



Sharon Laurenson

M 027 662 3164

View Listing whanga.co/8514



Only the best WAIHI TRADIES will do! Use Locals... For Locals... Support Locals!

GLAZIER



Baker Glass & Glazing Ltd

- Glass Repairs
- Shower Glass
- Splashbacks
- Balustrades
- Retro-fit Double Glazing
- Insurance Quotes

Member AMN
Masterglaziers network
Proudly supported
by Metro Glass



Ph 021 514 497 | glass@bakerjoinery.co.nz

JOINERY



Baker Joinery Ltd

- Kitchen Refurbishment
- Bathroom Refurbishment
- Laundry Refurbishment
- Window Replacements Retro Fit

For All Small Projects & Renovations
07 863 8962 | info@bakerjoinery.co.nz
Show Room 46 Johnston St, Waihi
SHOW ROOM OPEN SATURDAYS

VETERINARY SERVICES




WAIHI 07 863 8684
WAIHI BEACH 07 863 7387

TYRE SERVICES



- Tyre Sales • Mag Wheel Sales
- Fitting & Balancing • Laser Wheel Alignment
- Motorcycle & Truck Balancing

ph: (07) 863 8555 32 Kenny Street
m: 027 303 1428 Waihi 3610
e: goldvalleytyres@gmail.com

TYRE SERVICES




Car, 4WD, truck, bus & tractor tyres
Tyre repair - Lease vehicles,
Wheel alignments & Mechanical,
All brands of tyres



Waihi Tyre Services
48 Rosemont Road, Waihi
07 863 7508 • waihiytyres@gmail.com

PLUMBER



- Certifying Plumbers and Drainlayers
- CCTV Drainage Inspections & Drain Unblocking
- Plumbing Maintenance & New Builds
- Gasfitting & servicing

• All Hot Water Cylinder Repairs and Replacements
For all your plumbing and drain laying needs.
Contact David Anderson 021927405 Waihi
0211996236 Tairua/Pauanui • office@inchitplumbing.nz

FLOORING



Flooring Sales and Installation
FREE MEASURE & QUOTATION

Carpet, Vinyl, Wood & Laminate Flooring
SHOWROOM: 5/57 Wilson Road, Waihi Beach
Open 8.30am-4.00pm Monday to Friday
Saturdays by Appointment

Phone: 027 233 7277 | 07 863 5723
sales@owensflooring.co.nz owensflooring.co.nz

RENTAL PROPERTY MANAGER



FRIENDLY. LOCAL. RELIABLE.
RENTAL PROPERTY MANAGER - WAIHI

Call today! **Julie Cunningham**
027 549 2427

pggwre.co.nz | PGG Wrightson Real Estate Limited,
licensed under the REAA 2008.

OP SHOP

WAIHI ST JOHN OP SHOP
Recruiting Now!



Make a difference
IN THE WAIHI COMMUNITY

**Are you a Customer Service Superstar?
Magic Merchandiser? Keen Handyman?**
We are currently recruiting
for a variety of roles across various
departments in our Waihi Op Shop.

If you're keen to volunteer, pop in and ask to
see Store Manager Sam for a chat, or call her
on 07 863 9274 to find out more!

3 Silverton Road Waihi

PLASTERER

PLASTERER
FIX+STOP

PATCHES, repairs, new
builds, skim, renovations,
coving, wallpaper removal.
Ph or txt 022-4266-151.

DIGGER HIRE / LANDSCAPING



- LANDSCAPING
- AUGER DRILLING
- SOAK HOLES & SERVICING DRAIN LAYERS
- TILE LINES FOR SEPTIC TANKS
- HOLES DRILLED FOR ORCHARD PLANTING
- POLE & STEEL SHED FOOTINGS DRILLED

FREE QUOTES AVAILABLE
022 158 0234 • 2moonsdiggerhire@gmail.com

ARBORIST & FIREWOOD



TREE PROBLEMS?
Dismantle, pruning, removal, stump grinding. BIG or SMALL - we do them ALL!
0274 390 367
www.shortbacknsides.co.nz

FIREWOOD
Available all year round. Smoking chunks or dust, kindling, bagged wood. Delivery available or pick up on Fridays from 15 Dean Cres, Waihi. Gold Card discounts. Also 100s of native and exotic milled slab timber, garden mulch, smoking wood.
0274 390 367 or our firewood hotline 022 043 1862



ADVERTISING

ATTENTION WAIHI TRADIES!!!

Grab your spot on this page
Super affordable!
Just ONE price:
\$100 + GST for TWO adverts per month
Contact Jennie 021 0232 1661
Whangamatā & Waihi NEWS

Only the BEST TRADIES will do! Use Locals... For Locals... Support Locals!

SMALL ENGINE REPAIRS

ANTS REPAIRS

Whangamata-based small engine repairs & maintenance

- Chainsaws • Lawnmowers
- Ride ons • Weedeaters

Anthony Law
121 Sharyn Pl • 021 0244 2791
ants.repairs.nz@gmail.com

LANDSCAPING

Beach Contractors
& Landscape Supplies

LANDSCAPING SUPPLIES:


Bark, mulch, compost and topsoil	Sand, lime chip, river stones and pebbles	Cement, builder's mix and a range of metals
----------------------------------	---	---

Delivery service available

Whangamata Yard: 2546 Waihi Whangamata Rd M. 027 261 1262
Waihi Beach Yard: 691 Waihi Beach Rd P. 07 863 5340

CUSTOM ART

BIG CARHOONERS



Cartoon drawings of your ride

BRUCE RULE
bigcarhooners.com
Instagram: bigcarhooners2
Mobile 021974581

LAND DEVELOPMENT

Birch
LAND DEVELOPMENT CONSULTANTS

Subdivisions
Boundary Markings
Land Use Consents Topographical Surveys
Building Setout and Certifications

Contact us
0508 4 BIRCH
tairua@birch.nz
244 Main Road, Tairua
www.birch.nz

EARTHWORKS

Blackhill
EARTHWORKS

- Bobcat & excavator
- Tight access work
- Site works
- Topsoiling
- Driveways
- Hole drilling
- Concrete prep
- Cartage

Shay 021 742 966 | www.blackhillearthworks.co.nz
info@blackhillearthworks.co.nz

IT SUPPORT



FIBRE INTERNET
now available to order from Boot I.T.

We are the Coromandel's only local Fibre Internet Provider, and the ONLY provider that offers 7 days per week support.

Call us on 0800 242 266 to find out more.

Boot it.

CONCRETE

BROWNMORE CONSTRUCTION
CONCRETE CONTRACTORS

Any Concrete Requirements: Slabs, driveways, patios, paths, etc
All types of concrete - colour - finish
Council Permits for Vehicle Crossings
Excavation to finished product • Saw cutting & drilling

We take pride in doing a quality job at a competitive rate

REX: 027 285 5489
P. 07 863 3364 • office@brownmoreconstruction.co.nz
www.brownmoreconstruction.co.nz

PAINTER & DECORATOR

Gavin Johnson
PAINTER & DECORATOR

Interior/Exterior Painting
Wallpapering
Cedar Cleaning and Restoration Service

0224 552 363
brushstrokeswhangamata@gmail.com



DIGGER & CARTAGE

COAST DIGGER & CARTAGE

- Digger & Tip Truck Hire
- Driveways
- Building Digouts
- Site Works
- Concrete removal
- Track work
- Hole Drilling
- Tree Felling & Removal

Murray Clarke 027 2010 209
muzzclarke66@hotmail.com



HOME IMPROVEMENT

Coastal Home Improvement

- Aluminium Fences, Pergolas & Structures
- Renovations
- Showers
- Laminate flooring
- Wooden Decks, Fences & Pergolas
- Projection and Track Awnings
- Repairs and more....Just ask

Small business - local through & through

Tony Fraser 027 350 6948 CoastalHomeImprovement
coastalhomeimprovement@outlook.co.nz

PAINTER

Coastline Property Painters

Protecting your investment Communication is everything
Interior Exterior Roofs Updates & photos as your job progresses

Call Richard Upton: 0274 884 881 / www.coastlinepropertypainters.com




OUTDOOR COVER

Covered.

- Louvres
- Privacy Panels
- Awnings
- Sails

LOUVRESYSTEMS

info@covered.co.nz 07 865 6207 or 027 497 1236
www.covered.co.nz 300 Casement Rd. Whangamata



CURTAINS / BLINDS

Curtains and Blinds and More
Whangamatā

LOCALLY OWNED AND OPERATED

- Curtains
- Venetian Blinds
- Roller Blinds
- Romans Blinds
- Shutters
- Honeycomb Blinds

100% Mobile Service
We come to you, Free Measure and Quote

Call Louise or Gavin
on 027 4777 916
or email info@curtainsandblinds.co.nz

FRAMING

FRAMESNZ

- Picture framing
- Framed mirrors
- Art installation
- Pick up & delivery

Ade Cunningham
M. 0274 929 695 or P. 07 575 9149
info@framesnz.co.nz • www.framesnz.co.nz
300 Port Rd (corner of Ajax Rd), Whangamata



ELECTRICIAN

GREG HENSTOCK ELECTRICIAN LTD

Registered Electrician
One Man Band

WHANGAMATA
0272 580 366



Use Only the Best Services in our Community!

Use Locals... For Locals... Support Locals!

SHUTTLE SERVICE

Find us on Facebook!



AIRPORT & PRIVATE SHUTTLE

- Door-to-door service.
- 11 pax + luggage. Spacious. Air-conditioned.
- Airports. Weddings. Sports Events.
- Outdoor Adventures.

Enquiries & bookings:
gcadventures2026@gmail.com

Gareth & Gem
Body Work Gym

HANDYMAN

HANDYMAN

30 yrs experience, specialising in:

- Bathroom, deck & building repairs
- Gib fixing & plastering
- Interior /exterior painting

Please ring Rex on 021 997 428

BUILDING & LANDSCAPING

HBL HANSEN BUILDERZ

BUILDING & LANDSCAPING

COMMITTED TO EXCELLENCE
Contact us to discuss your project & a free estimate today



ADRIAN 0274 263 895 | hansen.builderz@gmail.com | HBLHomesnz
Residential | Commercial | Alterations | Additions

HEALING THERAPY

Healing Therapy

Sound Healing: crystal singing bowls
Access Bars Energy Healing
Emotional Release of Past Trauma
Remedial Massage: Deep Tissue - Sports Injuries

Contact Arthur 027 430 4305

BUILDING WASHING

HOUSE WASHING

Exterior house or commercial building wash, roof wash, fences, driveway, patios – soft-wash for best moss and lichen clean and treatment, exterior window cleaning, or general water blasting, 100m of hose so access is no problem.

Prompt local service with 20 years' experience.

Ph 0800 747 787 email housewash@xtra.co.nz **or dial Andy direct on 027 313 4386**

ARCHITECTURAL BUILDERS

HOME & Lifestyle

- Architectural Builders
- Interior & Colour Design Services
- Project Management

For trusted expertise with your building project

Katrina Jackson 027 273 0685 | Leigh Goodman 027 4475 423
info@homeandlifestyle.co.nz

CLEANING



Jae we'll take care of it

- Carpet Cleaning
- Pest Control
- Flood & Fire Restoration
- Stain Removal
- Upholstery Cleaning

From Waihi to Whangamata
07 863 8358 or 0800 225 552
whangamata@jae.co.nz

50 YEARS

AUTOMOTIVE & BOATS



JCD CUSTOMS & MARINE

BOAT TRAILERS, CARS, CLASSIC & HOT RODS

ONLY Repco STOCKIST IN TOWN! **ONLY HONDA AGENT IN TOWN!**

Aickin Road, Whangamata (next to Bunnings)
P. 865 9073 | E. office@jcdcustoms.co.nz
Mon-Fri from 8am

CHILDCARE

Jemma's Homebased Childcare - Recruiting Now
Passionate about children & their learning?



- Work from home and make a real impact
- Free training & level 4 study
- Smaller group size/build stronger relationships
- Create learning experiences reflecting your values

Join our supportive whānau today!
Be part of a rewarding role where your work makes a difference
Call Jemma's: 0800 536 627
| info@jemmas.co.nz | www.jemmas.co.nz

HOME BUILDERS

Whatever the site, we'll help you create the perfect home.

Jennian HOMES

614 Port Rd, Whangamatā E: coromandel@jennian.co.nz P: 07 865 6767



CONCRETE SERVICES

KARTIN CONCRETE SOLUTIONS LTD

- Concrete Polishing
- Concrete Grinding
- Drilling & Cutting • Block Honing
- Sealing and Masonry Applications
- Licenced Sto Applicators

Email: info@kartinconcrete.co.nz
Phone: 0274 954 957

TRAVEL BROKER



Kay Gregan THE TRAVEL BROKERS
The Travel Designer

AWARD-WINNING TAANZ BONDED TRAVEL BROKER
Travel Broker & CLIA Accredited Cruise Specialist
2025 Inaugural Brand USA Ambassador
Whangamata 07 865 9568 | M: 027 337 6222
Kay.Gregan@thetravelbrokers.co.nz
thetravelbrokers.co.nz/kaygregan

DELIVERERS WANTED

DELIVERERS WANTED IN WHANGAMATĀ

GET PAID TO GO FOR A WALK
Hottest delivery rate in town, \$20 per route at rate.
1 delivery per fortnight with a 2-3 day window to deliver.
Most routes take approximately 1 hour.



Whangamatā & Waihi NEWS

Contact Jennie Black 021 0232 1661
email whangamataneews@gmail.com

Only the BEST TRADIES will do! Use Locals... For Locals... Support Locals!

ELECTRICAL

For All Your Electrical Needs



Now Open In A Second Location
Introducing Laser Electrical Waihi

WAIHI 07 863 7746 WHANGAMATA 07 865 9309
waihi@laserelectrical.co.nz whangamata@laserelectrical.co.nz
40B Kenny Street 100 Lindsay Road

LOUVRES

Engineered for Life

LouvreTec

OPENING & RETRACT ROOFS
SUN LOUVRES / SHUTTERS

07 574 6040 office@louvretec.com

www.louvretec.co.nz

free no obligation quote & site visit

KITCHENS

McBeth Rd Orchard Joinery
Affordable joinery

Kitchens new or upgraded
Laundries & bathrooms
Wardrobes & storage units
Free estimates

Tony & Nicky Ball - 027 229 2255
Whangamata

BUTCHER

MEAT AT THE BEACH

Come into the local butcher and find:
BBQ meat, in store made sausages, patties,
tasty chops, steaks, butterflied chickens & much more.

'The home of Whanga bacon & Whanga Black Pudding'

601 PORT ROAD, WHANGAMATA P. 07 865 7241
MON-FRI 8.30AM-5PM • SAT 8.30AM-3PM

PODIATRY

Pedicare Services

Professional Foot Care

Alison Walkington
Registered Nurse

Home visits by
appointment

Mobile 027 663 2320 or
email alison.c.walkington@gmail.com



ELECTRICIAN

PITCHER ELECTRICAL



YOUR TRUSTED
MASTER ELECTRICIAN
working in Whangamata,
Opoutere, Onemana and
Whiritoa

RESIDENTIAL AND
COMMERCIAL SERVICES

TONY PITCHER 0274 589 573

PEST CONTROL



Professional Pest
Management

Say goodbye to unwanted pests -
spiders, ants, wasps, cockroaches,
rodents & more!

We offer a safe, effective pest
management solution tailored to suit
your needs.

Contact us today for a pest-free home
or business. Locally owned & operated.

STEPHANIE FRITH - QUALIFIED TECHNICIAN

pestpros@outlook.co.nz | 027 3211 796 | www.pestpros.co.nz

Whangamata & Surrounds

A member of Pest Management Association of New Zealand

WINDOW CLEANING



Your
ecofriendly
window
cleaning
service.

Mike Horton
info@purenclean.co.nz

M 021 501 324
www.purenclean.co.nz

HEAT PUMPS

Reef REFRIGERATION &
AIR CONDITIONING LTD

Stay comfortable all year round

- Heat Pump & Air Conditioning Specialists
- Expert Design & Maintenance
- Servicing & Preventive Maintenance

Trusted local expertise. Reliable Service.

Free, no-obligation quote.

Ph 07 865 9222 • contact@reefrigeration.co.nz

ROOFING



Rikki Daysh, Owner/Operator
022 408 8424
rikkisroofing@gmail.com

- Residential re roofs & new roofs
- Spouting
- Cladding
- Maintenance & re screws

PLUMBER

Russell CHOAT
GAS & Plumbing

Whangamata

FOR ALL YOUR GAS-FITTING, PLUMBING,
DRAINAGE & ROOFING REQUIREMENTS

Registered craftsman & member
of Master Plumbers

M. 0274 714 869 E. office@choatplumbing.co.nz

ELECTRICIAN / DOG GROOMER

Rusty Sparks

EVERYTHING
ELECTRICAL

Residential, Commercial,
Data, Alarms

021 800 017

admin@rustysparks.nz



**PIMPED
PUPS
GROOM
ROOM**

021 850 017
WHANGAMATA

WINDSCREEN REPAIRS

secureglass

For all your
windscreen
needs!

021 617 664
secureglassltd.co.nz



MONDAYS:

RSA car park, Whangamata

TUESDAYS:

Fresh Choice car park, Waihi

FRIDAYS:

Goldfields car park, Thames

BUILDER

SKF

**RESIDENTIAL
SERVICES**

LBP Builder / Renovation Specialist

07 865 6555 / 027 238 1659
skfrs@xtra.co.nz

Use Only the Best Services in our Community!

Use Locals... For Locals... Support Locals!

BINS

Skip Bins, Wheelie Bins, Front Load Bins

Contact us today! *We can help!*



0800 4 MY BIN - www.smartbins.co.nz


Proudly 100% Kiwi owned

BOARDING KENNEL / CATTERY



SPOT X Quality care and facilities in a rural setting
Office hours: 9am-12 noon and 3-5pm daily
INSPECTION WELCOME
Ph 07 865 8242 or 027 624 3890
Annette Gillatt
4km south of Whangamata on the main road

REFRIGERATION & AIR CON



* HEAT PUMPS * REFRIGERATION
* AIR CONDITIONING * VENTILATION

SERVICING IN THE COROMANDEL AREA
0272121994 - 0277251820
TIDELINEREFRIGERATION@GMAIL.COM
WWW.TIDELINEREFRIGERATION.COM

DIGGER HIRE / LANDSCAPING



2 MOONS
DIGGER HIRE
EXCAVATION & AUGER DRILLING

LANDSCAPING
AUGER DRILLING
SOAK HOLES & SERVICING DRAIN LAYERS
TILE LINES FOR SEPTIC TANKS
HOLES DRILLED FOR ORCHARD PLANTING
POLE & STEEL SHED FOOTINGS DRILLED

FREE QUOTES AVAILABLE

022 158 0234 • 2moonsdiggerhire@gmail.com

PAINTER



TOTAL PAINTING SOLUTIONS

CALL LEE ON 0275 656 336
Lee.tpms@gmail.com

30 Years of Interior & Exterior Painting
Delivering High-Quality Service with Exceptional Results

TREE SPECIALIST



- Tree felling & pruning
- Hedge trimming
- Stump grinding
- Fully insured
- Qualified arborist

TREECARE WHANGAMATA LTD
Contact 022 648 8150
treecarewhangamata@gmail.com

LAWYERS

USSHER LAWYERS

We can help with all of your general legal needs

- Conveyancing if you are buying or selling property
- Sale and purchase of business assets • Commercial leasing
- Relationship property • Trusts • Wills • Enduring powers of attorney

www.ussherlawyers.co.nz | Phone 07 865 8824
We've moved - now at 123 Lindsay Rd, Whangamata

WARDROBES



WARDROBES DIRECT

Steve Parkinson
Central, East & South
021 0733 100
steve@wardrobesdirect.co.nz

ALSO SERVICING WHANGAMATA
www.wardrobesdirect.co.nz

Showroom and office:
175 Marua Rd
Mt Wellington

LAUNDRY

WHANGA LAUNDROMAT



The only locally owned & operated laundromat in town!

OPEN 24 HOURS - 7 DAYS A WEEK
CASEMENT RD, WHANGAMATA (OPPOSITE WAITOMO FUEL)

SCAFFOLDING



- Mobile scaffolding
- Roof edge protection
- Construction scaffold

Servicing Whangamata and surrounding areas

Please ring 022 076 0160 or email whangamatascaffolding@gmail.com
102 Lindsay Road, Whangamata Est 2014

TYRE & BATTERY SERVICES



WHANGAMATA TYRE & BATTERY

KUMHO TYRES 7

Car tyres / Wheel alignment
4WD tyres / Tyre repair
Wheel balance
Small implement tyres
Batteries - car & marine

Phone Simon 865 7698

CHALLENGE Cnr Port & Ocean Rd, Whangamata
www.challenge.net.nz

WINDOW & DOOR SERVICES



WHANGAMATA WINDOW & DOOR SERVICES

Bryce Hall
M. 027 282 2057
Ph. 865 9714

Reglaze // Repairs // Maintenance
Retro Fit Double Glaze

whangamatawindowdoorservices@xtra.co.nz

HOME SERVICES



Your Local
NZ's Trusted Home Services

Avi@yourlocal.nz • www.yourlocal.nz • 022 534 5478

We specialise in

- Exterior house wash, windows, driveways, patios, decks, fences & roofs • Commercial, residential, rural, new builds & painters prep • Pests treatment (fumigation)
- Rodents & wasps • Chimney sweeping • Roof treatments

BUSINESS FRANCHISE FOR SALE

We cover Coromandel, Thames, Waihi, Waihi Beach, Whitianga, Whangamata

GRAPHIC DESIGN

For your **graphic design** needs

- Adverts ■ Signs ■ Flyers and more...

Contact Anna
aljgledhill@gmail.com

Graphic designer for *Whangamatā & Waihi News* & the *Repco Beach Hop* programme

DELIVERERS WANTED

DELIVERERS WANTED IN WHANGAMATĀ

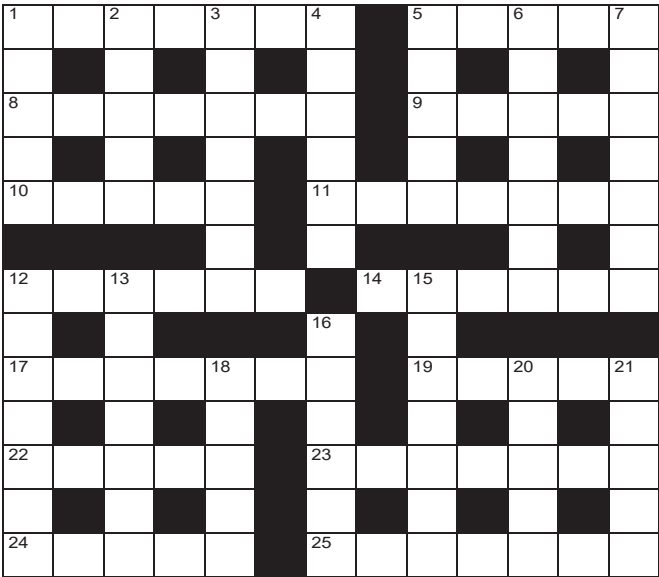
GET PAID TO GO FOR A WALK

Hottest delivery rate in town, \$20 per route at rate. 1 delivery per fortnight with a 2-3 day window to deliver. Most routes take approximately 1 hour.



Contact Jennie Black 021 0232 1661
email whangamataneews@gmail.com

QUICK CROSSWORD



Across

- 1. Stuff (7)
- 5. Inundate (5)
- 8. Serious mistake (7)
- 9. Elevate (5)
- 10. Cowboy show (5)
- 11. Every evening (7)
- 12. Buccaneer (6)
- 14. Frightened (6)
- 17. Overshadow (7)
- 19. Ignominy (5)
- 22. Intended (5)
- 23. Crush underfoot (7)
- 24. Private teacher (5)
- 25. Gift (7)

Down

- 1. Brownish-yellow colour (5)
- 2. Circular (5)
- 3. Last in series or line (7)
- 4. Become smaller (6)
- 5. Gesture of indifference (5)
- 6. Flier (7)
- 7. Intoxicated (3-4)
- 12. Fall rapidly (7)
- 13. Begin again (7)
- 15. Waterfall (7)
- 16. Be quiet! (4,2)
- 18. Later (5)
- 20. More than enough (5)
- 21. Choose (5)

All puzzles © The Puzzle Company

SOLUTIONS

SUDOKU

7	2	3	6	5	8	4	9	1
1	5	8	4	3	9	7	6	2
4	9	6	1	2	7	3	8	5
3	8	1	9	4	6	5	2	7
2	7	9	8	1	5	6	3	4
8	6	4	2	7	3	8	1	5
9	3	2	4	1	7	5	3	6
5	1	7	3	8	2	9	4	6

DECODER

1	2	3	4	5	6	7	8	9	10	11	12	13	14	15	16	17	18	19	20	21	22	23	24	25	26	
L	A	X																								

CRYPTIC

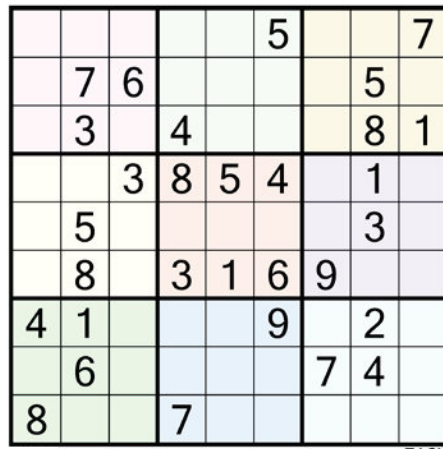
Across: 1. Powder puffs, 9. Yellow-bellied, 10. Uke, 11. Duck eggs, 14. Line up, 15. Allegre, 18. Cesspits, 20. Bat, 23. Thunderstruck, 24. Damp courses.
Down: 2. Ollskin, 3. Doom, 4. Rub out, 5. Unlikelly, 6. Fling, 7. Lye, 8. Odyssey, 12. Placate, 13. Jumped up, 16. Evacuee, 17. Stereo, 19. Scuba, 21. Str, 22. Sky.

CROSSWORD

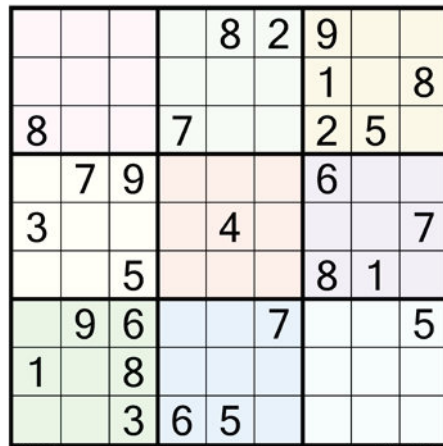
Across: 1. Ailess, 5. Swamp, 8. Blunder, 9. Raise, 10. Rodeo, 11. Nightly, 12. Pirate, 14. Scared, 17. Upstage, 19. Shame, 22. Mean, 23. Trample, 24. Tutor.
Down: 1. Amber, 2. Present, 3. Endmost, 4. Shrink, 5. Shrug, 6. Aviator, 7. Pie-eyed, 12. Plummet, 13. Restart, 15. Cascade, 16. Belt up, 18. After, 20. Ample, 21. Elect.

SUDOKU

Fill the grid so every row, column and 3x3 box contains the numbers 1-9



EASY



HARDER

DECODER

Each number below represents a different letter. Find the correct letter for each number by working out the word from the letters given. To keep track, cross the letters off on the grid below.

26	22	25	22	21	6						
18	13	10	13	4	14	13	16	26	3	25	20
13	25	8	20	12	7	3					
9	13	22	1	1	3	16	13	16	7	22	24
8	4	14	11	3	14	6					
19	8	26	22	24	15	8	4	7			
22	2	22	18	22	3	5					
23	4	5	24	6	7	4					
11	9	22	19	8	19	4	11	15	18	22	24
13	18	6	22	8	8	22					
25	18	8	6	6	14	6	20	8	2	22	4
17	10	14	6	22	6						

ABCDEFGHIJKLMNOPQRSTUVWXYZ

1	2	3	4	5	6	7	8	9	10	11	12	13
							A		X			
14	15	16	17	18	19	20	21	22	23	24	25	26
			L									

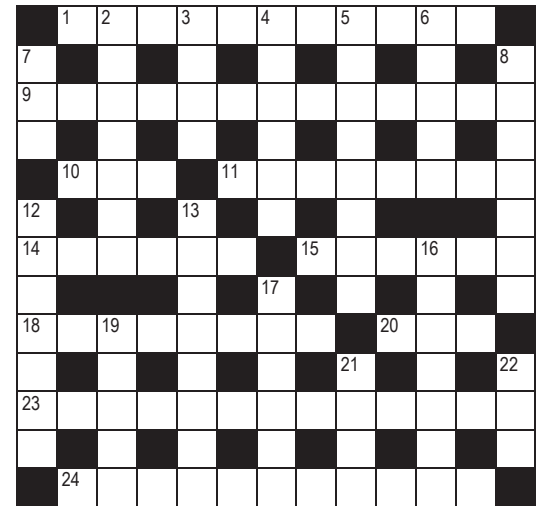
CRYPTIC CROSSWORD

Across

- 1. The make up of smoking guns? (6,5)
- 9. Chicken – like Bart Simpson naked? (6-7)
- 10. Two French articles missing on short stringed instrument (3)
- 11. Beware of the flying poultry produce!... (4,4)
- 14. ...it could cause a row (4,2)
- 15. Accuse everyone, for example, from the East (6)
- 18. The drains of Pisces St. (8)
- 20. This animal could be a hit (3)
- 23. Stunned, strange duck hurts tern (13)
- 24. Mass produce, perhaps, weather barriers (4,7)

Down

- 2. Use sunscreen, Mack (7)
- 3. The fate of being back in the mood (4)
- 4. Tuberculous has no clues to get rid of (3,3)
- 5. Reportedly it's not the usual Christopher. Not in the least (8)
- 6. Flaunting, aunt is out for a good time (5)
- 7. A bit of polyester found in the soap (3)
- 8. A trip Karen goes out on for donkey's years (7)
- 12. Alec & Pat make peace (7)
- 13. Leapt to be conceited (6,2)
- 16. Refugee Eva gets the cue from the Egyptian leader (7)



- 17. It's a sound investment (6)
- 19. Diver uses young animal in South Africa (5)
- 21. Mix turns up in gritstone (4)
- 22. If it's blue it means nothing (3)

BUFFALO WINGS WEDNESDAY

ONLY \$1 EACH

DINE IN ONLY

from 4:30pm - until sold out

Full sized buffalo wings for only a dollar per wing... Why would you wanna miss out on that??!

Book your table now - 07 865 6300 manager@crafthauswhanga.co.nz

Pasta Thursday @ CRAFT HAUS

Any haus pasta WITH a pint off tap or glass of haus wine for ONLY \$24! Choose from Seafood, Beef or Gnocchi!!

available from 2:30pm

FRIDAY SHOUT @ CRAFT HAUS

\$12.00 ea

PINTS - PIZZAS - WINES - COCKTAIL

2:30PM - 5:30PM

DINE IN ONLY.

BOOK YOUR TABLE - 07 865 6300 MANAGER@CRAFTHAUSWHANGA.CO.NZ

SHELLFISH SATURDAY @ CRAFT HAUS

ONLY \$25

GRAB 1KG OF NZ GREENLIPPED MUSSELS W GARLIC BREAD + A PINT OF TAP BEER OR GLASS OF HOUSE WINE

SCHNITTY SUNDAY @ CRAFT HAUS

Choose from chicken or pork schnitzel served with fries, salad & gravy + a pint off tap or glass of haus wine

ONLY \$20.00

Dine in only

Book your table now Manager@crafthauswhanga.co.nz

We highly recommend booking your table asap!! 07 865 6300 / manager@crafthauswhanga.co.nz
 LIVE MUSIC IN OUR GARDEN BAR 26TH APRIL ANZAC WEEKEND!!

CRAFT HAUS
 Gastropub Est. 2022

711 Port Road, Whangamata
 @crafthauswhanga - www.crafthauswhanga.co.nz
 07 865 6300