

PARADISE COAST

# Whangamatā

ISSUE 97 - 21 JULY, 2023

# NEWS



## Dynamite's comeback win!

P12 & 13



Photo by Jason Bartley  
Follow Bart's Rugby Photography on FB

**FREE COPY**  
PLEASE TAKE ONE!

**BY LOCALS, FOR LOCALS, ABOUT LOCALS.**

 LIKE US!

**WE WELCOME YOUR CONTRIBUTIONS!**

EMAIL [WHANGAMATANEWS@GMAIL.COM](mailto:WHANGAMATANEWS@GMAIL.COM)  
FACEBOOK @WHANGANews

SEE ALL OUR EDITIONS LIVE AT [WWW.WHANGAMATANEWS.NZ](http://WWW.WHANGAMATANEWS.NZ)  
EDITORIAL & MEDIA SALES:  
JENNIE BLACK - 021 0232 1661 OR 0272 108 190

**HOME DELIVERED TO WHANGAMATA**

# Banks launch three new hubs in regional banking trial



Bank Hub Director Roger Beaumont.

**Three new regional banking hubs will open from this week as part of the latest phase of the regional banking hub trial led by the country's six biggest retail banks.**

The three new hubs will be in Waimate, Whangamatā and Ōpōtiki. The Waimate hub will open its doors this Friday, with the remaining hubs opening over the next four weeks.

The first four regional banking hubs opened in late 2020 with banks deciding to extend and expand the trial last year. The hubs are designed to test community and customer demand for multi-bank services in towns that don't have enough customer demand for bank branches.

Roger Beaumont, chief executive of the New Zealand Banking Association - Te Rangapū Pēke, says the next phase of the trial will be insightful.

"The banks have learned a lot from the trial and recent changes to customer behaviour. The new hub model incorporates changes based on what we've learnt from the first phase, such as enhanced privacy and security, and face-to-face engagement with your banker.

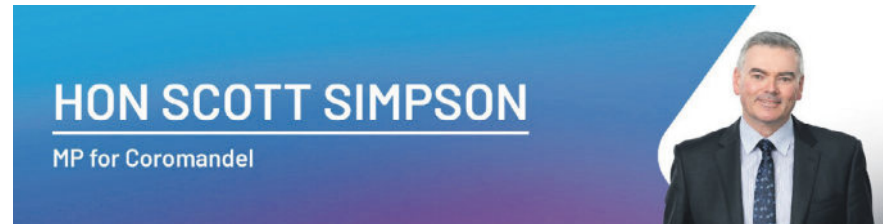
"The new model hubs will be located in stand-alone locations and have a multi-bank smart ATM and a coin and note change service. A concierge will be available to assist customers access the services, which include an ATM, tablet for online banking, and phone. These services will be available in private and secure areas to help ensure confidentiality.

"We're also introducing a banking advice service, where you can book a meeting with someone from your own bank. A banker from each participating bank will be available onsite at certain times during the week to assist with customer queries and internet banking," says Beaumont.

The opening dates of the hubs are:  
 21 July..... Waimate  
 31 July ..... Whangamatā  
 25 August..... Ōpōtiki

The regional banking hubs are an initiative led by the New Zealand Banking Association - Te Rangapū Pēke and New Zealand's six biggest banks - ASB, ANZ, BNZ, Kiwibank, TSB and Westpac.

- NZ Banking Association



## Volunteers on the Coromandel – Justices of the Peace

In every corner of the Coromandel electorate there are countless volunteers who are dedicating their time and energy to bettering our communities. It can be a thankless task, but volunteering provides a terrific sense of purpose and allows people to see the positive impact that can be made through both large and small acts.

One of the more unheralded volunteer groups are the Justices of the Peace. Often shorted to JPs, many people don't know about these folks until they need their services. JPs can witness signatures, certify copies of documents, and take statutory declarations. Most people need a JP at some point in their lives, because their services are required in a lot of situations, such as withdrawing your Kiwisaver.

When you need a document

certified, you realise that JPs are the very foundation stones of our entire Justice system. And all this work is done by volunteers. It's just a fantastic part of our society and the ability to give back in this way was huge reason why I became a JP before entering Parliament.

It's common for people to come into my office looking for a JP, but due to time constraints I have to rely on our local team of dedicated Justices of the Peace. If you need a JP, you can look them up online at <https://justiceofthepeace.org.nz/Page/Search> to see the available Justices in your region.

JPs are one of the many groups giving back to our communities. We simply wouldn't be able to function without our volunteers' willingness to step up, give back and do their bit.

- Authorised by Scott Simpson MP, 614 Pollen St, Thames

# Scott Simpson

## MP for Coromandel

**Contact me anytime**

0800 550 330  
[mpcoromandel@parliament.govt.nz](mailto:mpcoromandel@parliament.govt.nz)  
[scottsimpson.co.nz](http://scottsimpson.co.nz)  
[scottsimpsonmp](https://www.facebook.com/scottsimpsonmp)

Authorised by Scott Simpson, 614 Pollen St, Thames.

## Welcome to the second July 2023 edition of Whangamatā News

- a magazine By Locals, For Locals, About Locals

| Whangamatā NEWS   | www.WhangamataNEWS.nz   |
|---|---|
| <p><b>EDITOR &amp; SALES DIRECTOR</b><br/>                 Jennie Black<br/>                 Phone 021 0232 1661<br/>                 WhangamataNews@gmail.com</p> <p><b>SPORTS REPORTER &amp; PHOTOGRAPHER</b><br/>                 Mark James<br/>                 Phone 021 668 469</p> <p><b>ART DIRECTOR</b><br/>                 Anna Gledhill<br/>                 WhangamataNewsArt@gmail.com</p> | <p><b>PUBLISHING</b><br/>                 Printed by Beacon Media Group.<br/>                 Published by Whangamatā News 2021 Ltd</p> <p style="font-size: 8px; margin-top: 10px;">All content featured in Whangamatā NEWS Limited is subject to copyright in its entirety and may not be reproduced in any form without permission from the Publisher. Any material supplied for publication is at the submitter's risk. All information is believed to be true by the Publisher at the time of printing. Views expressed in Whangamatā NEWS Limited are not necessarily those of the Publisher.</p> |

**fusion**  
 LANDSCAPE DESIGN  
*Creating Your Sense Of Place*

For a free no obligation discussion contact Lynn 021 123 5650  
 Google search Fusion Landscape Design or visit [fusionlandscapedesign@houzz.co.nz](mailto:fusionlandscapedesign@houzz.co.nz) to view examples of previous work, discover more about Lynn, her company and read client comments.

Your local and the only Registered Master  
 Landscaper based on the Coromandel Peninsula

# To the EDITOR

## Tiresome

C'mon the Hon Scott Simpson... The repetitive tirade regarding the opening dates and so called 'lack of action' regarding the SH25A is getting tiresome.

The communities affected know the ongoing effect it has had on residents and businesses but your constant emotive and political draw carding is unhelpful.

I, along with many others, don't believe the Government or the NZTA are content to, as you put it, 'take their own sweet time without regards to the negative impacts it has on some many people'. Is this the only issue you can address in the local media? I would have thought there are many other elements to your role as MP for the Coromandel on which you can represent and inform the public. As of late, I have yet to see or read any evidence of this.

Short of a magic wand, let the experts get on with their job, drop the constant negativity and celebrate the progress that is occurring.

**Heather Watt**  
WHANGAMATA

## Ag-Sector Procrastination?

Gord Stewart (NZH 3/7/23) is credited as a 'sustainability consultant with a background in environmental management and economics'. It could be expected that a commentator boasting such credentials would have some understanding of the carbon cycle, economic reality and be more up to speed with the more recent science around the role of methane in the atmosphere.

He prefers to use emotive language to condemn the farming sector and adheres to the myopic focus on methane that characterises Green politics and its disregard of the rest of the carbon cycle.

Also ignored is the more recent findings that the global warming potential (GWP) of methane has been grossly exaggerated and is actually about a quarter of previous assumptions.

If a balanced approach to the carbon cycle were taken Stewart could acknowledge that the fuel for all food production is the CO2 extracted from the atmosphere. This provides carbon based food to feed carbon based creatures such as himself. He could then pass on that positive message to the anxious teenagers he claims to support instead of stirring emotions with talk of "stolen childhoods."

Some of these youngsters may even have some knowledge of photosynthesis.

**George Williams**  
WHANGAMATA

## Police report

G'day neighbours,

I see this weather of ours continues to dampen the mood. With this in mind I want to make a special mention to our volunteer fire brigade as their selfless efforts continue to amaze me and I think it's important we thank them.

You may soon notice Sergeant Hamilton back in uniform. The plan is for him to take back over as the Officer in Charge come 1 September. At this point I will return to the my Constable role and be able to spend more time back out on the streets.

Have you noticed us sitting and patrolling along Harry Watt Drive by the causeway? What we are doing there is trying to reduce speeds. Two counts were conducted across this road and showed some vehicles travelling in excess of 100km/h. It's a 50 km/h zone! We are often issuing people tickets for travelling at 70km/h (\$120 fine) and this really needs change. Harry Watt Drive/Hetherington Road includes three school drop off / pick up zones and the fitness track travels through. I can guarantee you that we can't just blame this one solely



on the out-of-towners. I ask that you help us in sharing this message so that together we can reduce the risk of someone getting run over.

Do you know your neighbours? Fortunately, we live in a very safe community with minimal thefts and burglaries but we are not immune. Something that puts off thieves is when they are being watched. If you don't already, I strongly suggest you make a conscious effort to get to know who lives next to you, behind and in front your house. Not only will you have an idea of who should and shouldn't be coming and going but they will then provide you with further security. If you see someone dodgy walking around on a property, ring 111!

I look forward to meeting more of you as the year progresses.

Thanks for reading,

- Jack Driver, Acting Sergeant,  
Whangamata Police



**Andacco Aqua**  
Available in 8 colours

**\$199  
NOW  
\$99**

*Perfect for travel or an everyday go to style*



Whitianga 07 866 4465 | Whangamata 07 865 8088  
[WWW.TANGOSSHOES.NZ](http://WWW.TANGOSSHOES.NZ)

AfterPay, Zip & Laybuy welcome.  

# Addiction Services & Retreat

*Private, professional, confidential, safe and experienced*

*Break the habit, get free and take control back*

*In Paeroa, to make a booking call 02041448652*

# RSA WHANGAMATA

**OPEN 6 DAYS**  
Tuesdays to Sundays from 11am

**Live shows & entertainment**  
**Families welcome!**  
**Anyone can join, come see us today**

**SUNDAY 23 JULY**



**FROM 4.00PM**

**COMBINED SERVICES DAY**  
**SUNDAY 27 AUGUST, 11AM START**  
We extend a warm welcome to anyone who wishes to attend a day to remember and talk about for years to come

**Rum Ration - Parade of Flags - Last Post**  
Medals to be worn  
Entertainment by Ebonivory and raffles

**Lunch \$30pp. RSVP Wed 23 Aug:**  
[rsamanager@outlook.com](mailto:rsamanager@outlook.com)  
phone 865 9419 or come in & see us

**NOT A MEMBER YET?**  
Our RSA is family friendly and encourages all members of your family to be involved. We have a FREE Kids Club with colouring in and toys. We have games Cornhole, Quoits and Jenga out for all to use. Check out our library that has a great range of kids & adults books.



**Ying's** Thai & European Cuisine

**OPEN 6 DAYS: TUE-SUN**  
**LUNCH, DINNER & TAKEAWAYS**

Everyone welcome  
Lunches daily 11am-3pm  
Dinner from 5pm

P. 07 865 9419  @whangamatarsa [www.whangamatarsa.com](http://www.whangamatarsa.com)

# New machines, best prices in town – and local



## Whangamatā News caught up with Denis Beaver, owner of the Whanga Laundromat.

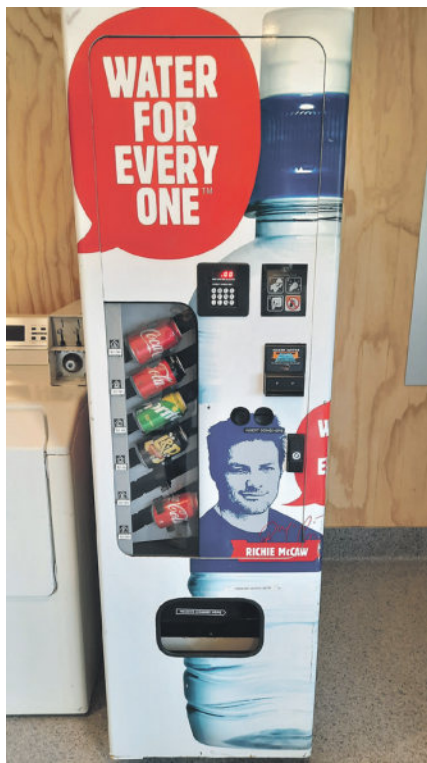
The laundromat has all new machines and they are big! A standard wash is only \$3, drying from \$1 with three ways to pay: cash, eftpos or smart pay.

The massive 28kg machines can hold up to seven baskets of laundry in them and that's only a \$7 wash.

Whanga Laundromat has wifi (free), snacks and is open 24/7 making it the complete service for your family needs. You'll find it opposite the entry to New World on Casement Road.

Of course they also have a change machine so you can bring in your notes for coin usage.

Don't forget that they're a full-service laundromat: they hire out all the linen for baches. Lovely Lorraine is still there, and she will do all the washing and drying for you, on top of the usual hireage fee. Whanga Laundromat also has laundry powder, should you need it.



Support local – support services who go the extra mile for you!

- Jennie Black

## Poet's Corner

### The Director

Her mind was speeding the slumber slow  
The restless quiet of the night her foe

She was the writer of the script  
And had ventured lonely but well equipped  
The fragments of the scenes unfolded  
Then came together then they moulded  
She built them in her mind  
Tied them tight so they would remain

Her only quest the thoughts to gather  
Into a comprehensible domain

As dawn broke the characters emerged

Some were shy but confident  
While others wore the cloak of courage or despair  
She knew exactly where to stand them

Their placement very clear  
She was the writer of the script  
And now the Director born  
She knew the task ahead  
Not daunted or forlorn

She asked the question once again  
What have I gotten into?

The morning paper beckoned her  
Warm slippers on her feet  
A cast to find now a new production to complete

### Older but younger

It is not until you grow into your older years, you realise that inside our body that our parents made for us, lives a young and vibrant you. People expect you to "act your age" of the elder body image they see.

Only you know the young person living inside your aged body, that still desires love, friendship, compliments, bear hugs.

It is a constant thought to repress our young selves to the aged era of no laughing out loud, no running in corridors, no flying high or low, dress (make your own list). I remember when I had an elder/younger moment on a cruise ship. I was 'Rose' running along the 'Titanic' corridor

calling for 'Jack'. So those out there acting your inner age - good on you and humbug to the knockers.

Perhaps they wish they could also act out their inner self.

- Dianne Stone

- Graeme Smith

Send your poems to [whangamataneews@gmail.com](mailto:whangamataneews@gmail.com)

## BOOF BOLAND

PAINTER & DECORATOR

P O Box 410, Whangamata 3643  
M: 0274 367 254  
E: [jenboof@outlook.com](mailto:jenboof@outlook.com)

# WHANGA LAUNDROMAT

*"The only locally owned & operated laundromat in town!"*

**OPEN 24 HOURS – 7 DAYS A WEEK**  
**CASEMENT RD, WHANGAMATĀ (OPPOSITE WAITOMO FUEL)**

# GLAUCOMA

**A progressive vision condition that can lead to blindness.**

**Risk factors for developing glaucoma:**

- Myopia
- Diabetes
- Thyroid disease
- Migraine
- Eye injury
- Family history of glaucoma

**Glaucoma is known as the sneak thief of sight.**  
**To be sure that you, not your guide dog, are seeing what is important to you book your appointment today.**

**Visique O'Hagan Vision Care**  
612 Port Road, Whangamata • Phone 07 865 0007

See the difference

# Ratepayers seek positive changes

On 13 July at New World Whangamatā, the Whangamata Ratepayers Association (WRA) were formally introduced to what we can expect for our \$2 million new rubbish and recycling service which will kick off in September.

This will coincide with the timing of the 2024/2030 Long Term Plan (LTP).

The recent Annual Plan process is yet another classic example of Council ignoring community.

Approximately 180 people from the Coromandel made submissions, which in itself is very disappointing, but an expected outcome after many years of Council ignoring the points raised by submitters. Why bother? Whangamatā only had a handful of submitters (8 to 12) that we know of.

We would be interested to know if any points made in any of your/our submissions were considered and made a difference in the Annual Plan.

We believe it to be none.

The only conclusion we can come to is the draft annual plan is actually the final plan and community engagement was undertaken by Council to comply with the Local Government Act.



WRA is determined to see community input in the 2024/2030 LTP process which we understand begins late July and early August with Community Board and Council meetings.

The question is "how do we instigate true and effective community engagement prior to Council's predetermined decisions", or do we let the Community Board get pushed around by Council and then go through another round of so-called submissions.

There are numerous instances in our town of wasteful spending – spending on things that have, in our opinion, low importance. This is poor planning by Council. Capital expenditure (CAPEX) is made without comeback on contractors, and promises to undertake works like stormwater are reneged on without accountability.

Failure to consult and engage truthfully with locals, project work gets done without anyone knowing it needs doing and it is not found to be represented in annual budgets.

Abysmal management including disingenuous responses to Request For Service's (RFS), ignoring maintenance needs when things run down and get into disrepair, failure to service local assets and failing to even provide the Community Board, our representatives, with advice of what is going on.

We intend laying out our community's wishes to our Community Board, and working within the rights of engagement and transparency laws that Councils must abide. There are Government boundaries and policy requirements that Councils MUST comply with.

That's not undertaking illegal or disruptive actions but working smarter within the legislation.

WRA intends to canvas the opinions of our ratepayers and residents to seek change in all spheres of Council business starting with the upcoming 2024/2030 Long Term Plan.

It's time to consider what we want for our town in the LTP, start thinking about it now.

Help us to help you – our Community – by becoming a member of Whangamata Ratepayers. Email us on whangaratepayers@gmail.com or go to the contact page on our website.

- Rob Boston



Whangamata Club

Join Us AT THE **WHANGAMATA CLUB**



sky sports TAB



**BLAZE**  
'OLD SKOOL RULES'

**Saturday 22nd July**  
6.30pm - Late  
Live at The Whangamata Club

**BLAME THE CATS**  
classic Rockabilly / Rockabilly and Country Rockabilly  
from the '50s & '60s plus later

**Rockin Whangamata Club**



**Saturday 29th July**  
7pm - Late  
Live at The Whangamata Club  
404 Port Road, Whangamata

WHANGAMATA CLUB PRESENT

**SMOOTH & GROOVE**



**SATURDAY Night**

Sat 12th August 6.30 Start

**DINE AND DANCE**

404 PORT RD WHANGAMATA (07) 865 8705

**OPEN DAILY FROM 11AM**

**BISTRO**  
Monday - Friday from 3pm  
Saturday & Sunday from 12pm

**DINNER MENU**  
From 5pm daily

**RESTAURANT**  
Friday - Sunday from 5.30pm

**404 PORT ROAD**

**FACEBOOK.COM/THEWHANGACLUB**

**WWW.WHANGAMATACLUB.CO.NZ**

**P. 07 865 8705**



**TUNE INTO 95.1 FM**



# Matariki ki runga – celebrating Matariki

**Mānawa maiea te putanga o Matariki**  
**Mānawa maiea te ariki o te rangi**  
**Mānawa maiea te Mātahi o te Tau.**  
**Whano, whano Haramai te tokī ata**  
**huakirangi**  
**Haumi e, hui e, tāiki e!**

**Celebrate the rising of Matariki**  
**Celebrate the lord of the skies**  
**Celebrate the new year**  
**Unite, unite And bring forth the dawn**  
**Together, in union, we are one!**

What a fantastic way to celebrate Matariki in Whangamatā. The Community Marae combined with the Arts Collective to bring together our community for an amazing weekend of workshops, activities, food and fun.

The Memorial Hall provided the venue for an exciting range of interactive workshops for children and adults. Everyone was busy making kites, learning how to work with harakeke or clay, make felt stars, a silk design, colour in a Matariki themed picture or participate in completing a large Whangamatā scene using a colourful array of tiles.

Nick Tautuhi provided whakairo (carving) tuition and there were some very cool traditional wind pieces completed. Traditional tā moko (tattooing) amazed onlookers with the skill and patience required.

The Hāngī was laid in Williamson Park early morning Friday and was lifted around 4.30pm.



What an amazing way to feed over 500 ticket holders. Three meats with so many vegetables and a steamed pudding for dessert, all for \$5 per person. A vegetarian curry, a seafood chowder, a seafood salad and a raw fish dish were also on offer. Some talented local artists entertained the crowd

while they enjoyed their kai. It was a wonderful day of coming together as a community of whānau, enjoying the workshops and learning about Matariki and the significance Matariki has for our people of Aotearoa. A huge thank you to all who helped prepare, serve, encourage and clean up. A very

commendable effort to all involved.

The celebrations continued throughout the weekend. Saturday saw another round of workshops. On Sunday morning we gathered at Onemana Beach to view Matariki and the sunrise. Unfortunately Matariki was hiding behind the clouds but the sunrise was beautiful and it was very special to spend some time together as whānau reflecting, remembering and looking forward to a new year. Sunday afternoon was a community Waka Ama. It was windy and cold but we had a keen crew who were strong in the waka. A paddle around the

Moana Anuanu Estuary left everyone with smiling faces.

A huge thank you to all organisations who joined together to organise the Matariki events. Ngāti Pū, Te Urungawera, Whangamatā Community Marae Trust, Whangamatā Arts Collective, Eastern Coromandel Community Services Trust and Te Whānau Waka Ama o Whangamatā.

We look forward to more Matariki events in 2024.



## WHANGAMATA SPORTS BAR

### NEW OWNERSHIP! NEW MENU!

|  |  |  |  |   |
|--|--|--|--|---|
| <p><b>WEDNESDAY BURGER NIGHT</b><br/>                 3pm-9pm<br/> <b>\$15</b><br/>                 Beef, chicken or fish burger</p> | <p><b>THURSDAY STEAK NIGHT</b><br/> <b>\$18.5</b> 3:00-9:00PM<br/>                 200g porterhouse steak, salad &amp; fries, choice of mushroom or pepper sauce</p> | <p><b>FRIDAY CHICKEN WINGS</b><br/>                 3pm-9pm <b>\$18</b><br/>                 WITH A TAP BEER OR HOUSE WINE<br/>                 TOSSED IN SPICY KOREAN CHILLI PASTE, HOUSE SLAW<br/>                 OR<br/>                 TOSSED IN BBQ SAUCE, HOUSE SLAW</p> | <p><b>SATURDAY PORK RIBS</b><br/>                 WHANGAMATĀ SPORTS BAR<br/> <i>Pork Ribs Saturday</i><br/>                 3:00-9:00PM<br/> <b>\$20</b></p> | <p><b>SUNDAY ROAST ALL DAY \$15</b></p> <p>Changes every week, served with roasted veges, yorkshire pudding &amp; pan gravy</p> |
|--|--|--|--|---|

# Opoutere School Term 2 full of action

Another action-packed term has passed by, full of learning, laughter and excitement. Term 2 began with an unusually later start on Wednesday, with ANZAC day being observed on the Tuesday of the first week. Many schools also took the first of their two allocated Teacher Only Days for 2023 to begin exploring and discussing the New Zealand Curriculum refresh.



Below are some of the many highlights and achievements from Term 2:

Our senior whānau group leaders went to Hamilton for the National Young Leaders Day conference. They had the opportunity to listen to inspiring NZ speakers and take part in interactive leadership activities.

The Year 5-8 Opoutere School Rippa Rugby teams went to the qualifying tournament at Waihi College. The Year 7/8 girls team went on to the finals day later in the term and narrowly missed out on making the semifinals. Our Year 3/4 tamariki had an opportunity to attend a Rippa Rugby "have a go" day in Paeroa and loved every minute of the occasion.

After a postponement last term, Totara (Yr 5/6) got a window of great weather and embarked on their two day camp to Otorohanga as a culmination to their "Kiwiana" inquiry. They had an amazing time staying at Te Kotahitanga Marae, exploring Waitomo caves and visting the Kiwi House bird park.

As well as celebrating Pink Shirt Anti Bullying day, we also sadly farewelled Matua Ryan from our kura. Matua Ryan has been a massive part of our kura since 2015 and instrumental in the design and implementation of our Adventure Learning Curriculum, Te Reo and Te Ao Māori in our Kura including being a Kapa Haka Tutor. We are extremely grateful for Ryan's

expertise, knowledge and love for the outdoors over this time. We will miss his aroha, courage, passion and strength but know that these qualities will live on through all of the tamariki and kaiako (teachers) that he has been involved with. His wairua will always be present in our kura.

A group of students represented our school at the "Rolling Stars" mountain bike programme at the Whangamatā mountain Bike Club trails. Students were provided with mountain bikes and safety gear for the day. They got to experience the bike park, ride the tracks, work as a team, learn some filming skills and find the best shots and angles and make a small film as a team. We are extremely grateful to Ride Coromandel and Whangamatā Mountain Bike Club for making this happen for our tamariki.

Our school community came out in the droves to support our school working bee. Seating was made in the pool area and a carpentry maker space built on our deck. The Ngahere (native area) was tidied up and gardens created as well. Thanks to everyone who contributed and special thanks to Carters for the donated timber and Whangamatā Woodworks for the carpentry cabinets.

We are so thankful to Mrs Emma Driver who was successful in applying for funding from Pub Charities to build our whare tākaro

(play house). Our new whare was given a special whakatapunga (blessing) by Junior Wairepo and our Puawai group sang a beautiful waiata for the occasion. Complete with a campfire area, everyone is very excited about our new space.

It was a stunning day to start off the first official day of winter and what better way than to celebrate, than with a trip to Tairua for tamariki to attend the annual WHOT Winter Sports. WHOT sports involves Whangamatā Area School, Hikuai School, Opoutere School, and Tairua School (WHOT) who compete against one another in soccer, rugby and netball. A great day had by all.

Opoutere staff attended a full day outdoor safety course hosted by Peak Outdoor Safety and Environment Management. It was a very hands-on informative and important first aid course to attend, particularly as an outdoor education school. All staff learnt so much from the experience - who's squeamish, who has theatrical talents and most importantly, how to respond in an emergency situation, particularly in the outdoors.

In the second to last week of term, whānau were invited to come in and korero kanohi ki te kanohi (face to face) about tamariki and their learning at our Whānaungatanga Hui. Prior to this all whānau received their child's online reports via our new HERO school management system.



As a culmination to the Matariki themed term, Opoutere kura held a week-long event celebrating Matariki. Tamariki and whānau took part in four daily activities in their whānau groups. They made manu tuku tuku (kites), learned about the Pūrākau (story) Te riri o Rūaumoko, the atua (god) of earthquakes and volcanoes and fire making, went on a hikoi to Opoutere beach and forest and had fun with kai (food) and feather art.

During the Matariki week we also hosted Kaumatua (Grandparent's) Day. We were so lucky and thankful to all those kaumatua who came to Opoutere kura so that their mokōpuna (grandchildren) could spend time with them and take part in our Matariki celebrations.

And finally, our School Community Hāngī was held on the final Friday of the term. Thank you to Joe, Daniel, Te Awheroa and their helpers for a delicious hangi. We also would like to acknowledge Eastern Coromandel Community Services Trust for covering the cost of \$1200 worth of meat, to Steve and Janine from "Meat At The Beach", and a special thanks to the Paritu whānau for their mahi and support. Both Kapa haka groups, Puawai and Tane Mahuta, sung and performed beautifully on the day.

So, there you have it folks. Like I said, a very full term of special activities and learning opportunities. I sometimes wonder how we manage to fit so much into ten weeks but then I remind myself why - that we are surrounded by wonderful tamariki, a generous and supportive community, and extremely capable teaching and support staff for which we are very grateful.

Kia pai tou tatou Matariki. Happy Matariki everyone!

- Jethro Dyer, Principal, Opoutere School

## Bin worried about bag costs?

3 SIZE  
OPTIONS

Contact us today!

PHONE 0800 4 MY BIN (0800 469 246)

EMAIL [sales@smartbins.co.nz](mailto:sales@smartbins.co.nz)

ONLINE [www.smartbins.co.nz](http://www.smartbins.co.nz)

smart

environmental

Proudly 100% Kiwi owned





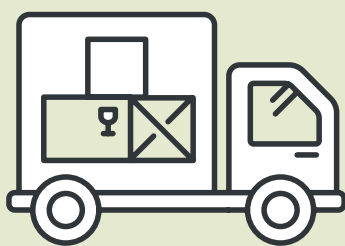
# SPECIAL OPEN DAY

## Saturday 22 July - 10am-3pm

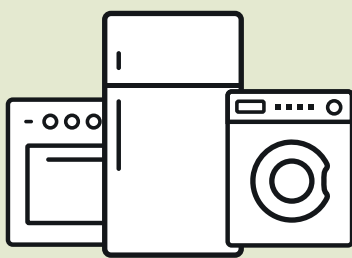
We appreciate that the cost of living crisis is affecting people.

For a selected number of villas we are offering:

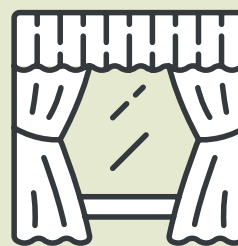
# No weekly fees for 2 years



\$5,000 towards moving costs



\$5,000 whiteware package



\$5,000 Curtain package



\$10,000 Cashback

Or we can tailor a package that best suits you.

# LONGRIDGE

C O U N T R Y E S T A T E



# New 2023 kerbside collections FAQs

## Q: What kerbside services will we receive from 1 September 2023?

Our new 10-year solid waste contract with Waste Management NZ Ltd begins on 1 September 2023. The services they will provide include residential kerbside collections and Refuse Transfer Station operations.

- **Food waste** collected **weekly** in a 25-litre bin, with new bins supplied — *new service*
- **Domestic rubbish** collected **fortnightly** in a 140-litre wheelie bin, with new bins supplied — *new service*, replacement for blue bags collection
- **Glass** will continue to be collected **fortnightly** with a limit of two Council crates per household
- **Mixed recycling** (paper, cardboard, tins and hard plastics 1, 2 & 5) collected **fortnightly** in a 240-litre wheelie bin — *same as our current service*
- There will be additional rubbish and recycling residential kerbside collections in the peak summer period provided in some areas — *same as our current service*.

## Q: Are we getting a rubbish bin instead of blue bags?

Yes, starting from 1 September 2023 we'll no longer be using official, pre-paid blue plastic rubbish bags for kerbside collections. Instead, we'll be using 140-litre wheelie bins, just like the ones we use for recycling except a bit smaller.

## Q: Will the blue pre-paid bags be collected kerbside after 1 September 2023?

No, but we will continue to accept Council's official blue bags at our seven Refuse and Recycling Transfer Stations free of charge until stocks run out.

## Q: Will the rubbish, recycling and crates all be collected in the same fortnight?

No. We're having an alternate week system – which we're calling red and yellow weeks. One week it'll be a red week when you will have your rubbish bin and your food scraps collected. The following week it'll be a yellow week where you'll have your mixed recycling bin (paper, cardboard, tins and hard plastic), crate of glass and food scraps bin collected. Note that the food scraps bin gets collected weekly.

## Q: Will my bins service day change?

Your service day *may* change. The collection service will operate across a five-day working week so some customers will have a new day for their kerbside collections. We will be letting residents know their allocated days in August, well before the start of the service in September 2023.

## Q: What can I put in my food scraps bin?

The food scraps bin can accept items like:

- fruit and vegetables
- cooked food (like rice and pasta)
- meat and fish
- coffee grounds and eggshells
- dairy

You will receive an information leaflet when your bin is supplied with more detailed information on what can go in the bin.

## Q: Are the food scraps bin and rubbish bin optional?

No. All properties in kerbside service areas will receive a food waste bin and a wheelie bin for rubbish.

## Q: What if I compost at home?

That's great! Thanks for doing your

part to combat food waste. Even if you already have your own system in place, the new food scraps system provides a benefit to the whole community and the environment by significantly reducing the amount of overall waste going to landfill. Composting at home is also a great option – people can still use their food scraps for things that may not be added to their compost or worm farm, like meat, small bones, onion skins, and dairy.

## Q: Why do we need a food scraps bin?

When we audited some kerbside Council rubbish bags in 2021 we found that organic matter comprised just over 60 per cent of the weight going to landfill. Kitchen food waste made up 86 per cent of that organic material.

When food scraps break down in landfill they give off greenhouse gases like methane, which is not good for the environment. Getting food scraps out of landfill and collected to make compost gets the goodness back into the soil, where it belongs.

## Q: When will I receive my new bins?

Bins will start being delivered to properties at the end of July and will be with customers by end of August 2023. The schedule for the bin rollout will be confirmed closer to the time.

## Q: Why are there so many bins – where will I put them?

Replacing the blue pre-paid plastic bags with a wheelie bin reduces reliance on plastic. The lidded rubbish bins mean no more bags being torn open by animals or birds. They're also much safer for our contractors to empty, as the truck uses an automated arm to pick

them up rather than workers having to manually handle bags.

The food scraps bin will reduce waste going to landfill. Getting food scraps out of landfill and collected to make compost is a much better use of the resource and gets the goodness back into the soil, where it belongs.

Where there is limited space on the kerbside, you can place your food scraps bin or glass crate directly in front of your wheelie bin. Allow approximately 30cm between the bins so the automated arm from the truck has room to pick up the individual bins.

## Q: How will ratepayers/ residents pay for the waste services?

Solid Waste services are paid for in a number of ways:

- **A targeted rate for customers that receive a kerbside rubbish and recycling collection.** That rate was set in June 2023 when our Council adopted the annual plan for 2023/2024 after public consultation in March/April 2023.
- **\$8 Pay As You Throw (PAYT) tags** that customers need to buy and attach each time they put out their rubbish wheelie bins kerbside to be emptied. Having a pre-paid PAYT tag system for rubbish bins means each household is only paying for the rubbish they generate. The tags will be available to purchase at participating local retailers.

**If you still have questions, please contact our customer services team on 07 868 200 or email [customer.services@tcddc.govt.nz](mailto:customer.services@tcddc.govt.nz)**

*Please note: The information in the FAQs has been provided to the best knowledge of our Council at the time these FAQs were revised in July 2023.*

## We provide a wide range of services for your Farm Animals:

- Animal Health Plans
- Springtime Emergency Services
- Ultrasound Pregnancy Testing
- Mastitis Management & Prevention
- Lameness Management & Prevention
- Trace Element testing
- Body Condition Scoring
- Reproduction Programmes
- Debudding & Dehorning
- Vaccinations
- Geldings

  
**CoroVets**

**Waihi Clinic:**  
10 Mueller St, Waihi

**Whangamata Clinic:**  
215 Aickin Road, Whangamata

**Tairua Clinic:**  
1 Wharf Road, Tairua

**0800 267 683**  
**farm@corovets.co.nz**  
**www.corovets.co.nz**



# Our Coromandel

News from Thames-Coromandel District Council



## Stormy weather impacts roading and rates

Reprioritising budgets and projects to repair our storm-damaged roading network has defined our Council's Annual Plan for the 2023/24 financial year.

Our Council formally adopted the Annual Plan at the end of June, setting an average district-wide rates increase of 11.6 per cent.

To avoid a higher increase, we've cut our operational costs, revised our capital works budget and deferred some of our non-roading projects. We've also used retained earnings – which are generated when our operational budgets have been underspent – to



### ANNUAL PLAN 2023/24 REBUILD AND RECOVER

- Your rates for 2023/24
- \$14.6 million of roading recovery projects
- Updated projects, budgets, fees and charges
- New kerbside collection pricing and more

soften the rates increase by three per cent.

“The road to recovery may seem daunting at times, but we'll continue to advocate for ongoing central and regional support as we move through the recovery phase,” says our Mayor Len Salt.

Find out more and read our full Annual Plan at [tcdc.govt.nz/annualplan2023](http://tcdc.govt.nz/annualplan2023)



## RATES REBATES

Applications for the 2023/24 rates rebate year from Te Tari Taiwhenua | the Department of Internal Affairs (DIA) are now available. Rebates are calculated by DIA, with the maximum rebate being \$750.

If you need a hand, visit the Council's Whangamatā area office between 8.30am–4pm weekdays at 620 Port Rd. Or call 07 868 0200. You have until 30 June 2024 to apply for a rebate in the current rating year.

[tcdc.govt.nz/ratesrebate](http://tcdc.govt.nz/ratesrebate)

# Yello!

## It's dog rego time



Register your dog before **1 August** to avoid penalties.

[tcdc.govt.nz/dogs](http://tcdc.govt.nz/dogs)



## NO TIME TO WASTE

HOUSEHOLD KERBSIDE COLLECTIONS ARE CHANGING FROM 1 SEPTEMBER 2023



**25-LITRE FOOD SCRAPS BIN**  
Collected weekly



**MIXED RECYCLING WHEELIE BIN**  
Collected fortnightly



**GLASS RECYCLING CRATE**  
Collected fortnightly



**140-LITRE WHEELIE BIN FOR RUBBISH**  
Collected fortnightly

New collection schedules will be on our website in August 2023. The new rubbish bin will require a Pay As You Throw (PAYT) tag, available from local participating retailers. This will replace the blue prepaid rubbish bags.

FURTHER DETAILS ON THE CHANGE AT [tcdc.govt.nz/solid-waste-FAQs](http://tcdc.govt.nz/solid-waste-FAQs)

**PUT WASTE IN ITS PLACE**

## Dune Restoration: What's happening?

Dunes not only provide a buffer between land and sea, they are also an important part of New Zealand's coastal biodiversity. The Whangamatā dune restoration project is a collaborative initiative to create a more resilient dune system and encourage the regeneration of indigenous species.

The project involves working alongside Whangamatā's local community, including iwi Ngāti Pū ki Otairi, hapū Uru Ngawera, Department of Conservation and Coastcare Waikato.

Join us for a community planting day on 29–30 July, 26–27 August, or 16–17 September (weather dependent). Meet at 9am, at access 14 (Island View Carpark). All you need to bring is covered sturdy footwear, suitable clothing, gardening gloves, and a spade. For more information, follow Coastcare Waikato on Facebook, or join the Facebook group for volunteers: Save the Dunes Whangamatā.

You can also check [tcdc.govt.nz/dunes](http://tcdc.govt.nz/dunes) for updates.



## Whangamatā Community Board UPDATE



**A word from our Board Chair, Dave Ryan** – “As our recovery work continues, our Council has adopted the latest Annual Plan, which sets out the roadmap for the upcoming financial year. It won't be surprising to see that repairs to roading and storm resilience are key priorities as we look to reconnect and support our communities. [tcdc.govt.nz/annualplan2023](http://tcdc.govt.nz/annualplan2023)



Another change is the upgrade to our recycling and rubbish service, including the introduction of food scrap bins. This will significantly reduce the amount of waste going to landfill, which is a win for our communities and environment. You can find out more at [tcdc.govt.nz/kerbside](http://tcdc.govt.nz/kerbside)” [dave.ryan@council.tcdc.govt.nz](mailto:dave.ryan@council.tcdc.govt.nz)

**The next Whangamatā Community Board meeting** will take place at 10am on Tuesday 1 August at Whangamatā Service Centre, 620 Port Road. See our website for agendas and minutes – [tcdc.govt.nz/meetings](http://tcdc.govt.nz/meetings)

[@ThamesCoromandelDistrictCouncil](https://www.facebook.com/ThamesCoromandelDistrictCouncil)  
[coromandel\\_tcdc](https://www.instagram.com/coromandel_tcdc)  
Get our free eNewsletters!  
[www.tcdc.govt.nz/subscribe](http://www.tcdc.govt.nz/subscribe)

[tcdc.govt.nz](http://tcdc.govt.nz)  
customer.services@tcdc.govt.nz  
Private Bag, 515 Mackay St, Thames  
Phone: 07 868 0200

# Champion team claim McClinchy in comeback win



Taken: Jacob Chaplin secure clean lineout ball.



Shortest distance between two points is a straight line - Joe Perawiti teaching.



No fear: Eli Byles sandwiched between North frontrowers.

**“It’s hard to beat a person who never gives up” typified the fabulous Whangamatā Red n Whites Senior A rugby championship final win 33-20 over Hauraki North.**

**It took bucket loads of self-belief and courage for the Red n Whites, who were on the canvas with a very weak pulse, to fight back from a 17-0 deficit in this final.**

This rugby game had more mood swings than an irrational teenager and enthralled the jam-packed Rhodes Park in Thames. For the first 30 minutes, Hauraki North had their name pencilled in on the McClinchy Cup with a massive 17-0 lead. Two accurate Sean Cullen penalties kept Whangamatā within range 17-6 before half time.

At the interval, the Whangamatā support team set the path for the Red n Whites to move the momentum their way. A rare Hauraki North knock-on error and a midfield chat between referee Nico Fox and assistant Dali Tui, gave the Red n Whites line out possession. From the resulting forward drives Number 5 Chris Tuilotolava dotted down under the uprights. The Cullen conversion narrowed North’s lead to 17-13. The tide was turning and the Hauraki North error rate was noticeably increasing.

Quick thinking lock Finn McCall snatched an interception and bolted untouched for Whangamatā’s second try. Another conversion took the Red n Whites ahead for the first time 20-17 after 45 minutes. Still plenty of time for more drama in this game.

A gentle reminder from the Hauraki North Blue Bulls with a penalty to level the scores 20-20.

The hard-working Whangamatā forward pack had props Brad Laurenson and Callum Wall as a bedrock foundation in their scrums.

Midfield back Joe Perawiti punched through the Norths defence endlessly in this game. One of his breaks lead to good field position for the now rampant Red n Whites.

A period of organised and focused forward drives ground down the wilting Norths side. Bit by bit the Red n Whites took the ball up to the try line. Hooker Jacob Janson nailed it as he crashed over for the try which Cullen continued his machine like kicking with the conversion. Whangamatā 27 Hauraki North 20.

Two more penalties by Cullen wrapped it up for the Red n Whites 33-20. The worm had turned quickly from a desperate game situation of a 0-17 deficit to a fabulous and joyous victory 33-20.

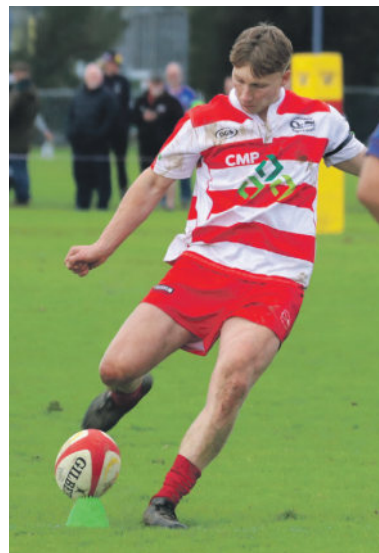
Magnificent crowd support for the Whangamatā side as the Red n White chant helped drive their side on. There was plenty of well-intentioned advice including “straighten it up”, “get it up there” and the classic goal kicking advice: “don’t forget the wind is against you mate.”

Thanks to match officials referee Nico Fox and assistant referees Dali Tui and Aaron Miller. Cheers to the Thames Rugby Football Union for organising a great day of rugby.

- Donald McKay, Sports Reporter,  
photos by Jason Bartley  
Follow Bart’s Rugby Photography on FB



Leading from the front: Zac Clark carries hard.



Three more: Sean Cullen slots three more for a personal tally of 18 points in the match.



Leap of faith: Connor Emmerson charges into the fray.

**Here are the champion Whangamatā personnel...**

**Starting fifteen:**

Brad Laurensen, Jacob Janson, Callum Wall, Finn McCall, Chris Tuilotolava, Topou Tonga, Jacob Chaplin (co-captain), Zach Clarke (co-captain), Tiaontin Raoren, Telly Hemopo, Connor Emerson, Joe Perawiti, Sean Cullen, Jacob Barfoot and Eli Byles.

**Impact players:**

Tobias Pulley, Paki Solomon, Michael Savage-Wairepo, Jack O'Halloran, Dylan Jeffries, Stephen (TJ) Wise, Takarangi Kerepeti.

**Bracketed players:**

Ben Laurie, Kayne Hohaia-Johnston and Donny Rau.

**Management:**

John Corbett, Geoff Spargo, Lilly Robertson, Tina Aickin, Neil Evans and not forgetting Will Everton.



Job done: Captains Jacob Chaplin and Zac Clark with the spoils of war.



Doing the hard yards: Jacob Janson still going hard after 70 minutes.



Clean contact: Telly Hemopo kicks for touch.



No free rides: Sean Cullen throws himself into the tackle.



Tireless: Prop Brad Laurensen carried hard all day in the tight.



Sweat taste of success: Veteran prop Brad Laurensen celebrates his second McClinchy Cup win.

# Director's update: 'Our Special Place, South of the Bombays'

The rehearsals for the Whangamata Theatre production *Our Special Place, South of the Bombays* are well underway.

Backstage organisation is moving along well, with Set Designer Rob Boston forging ahead with planning and organising so to create a spectacular set. In the attached photo the Theatre Society Committee are admiring the scale model Rob has made. In conjunction with Whangamata Scaffolding the set will prove to be a first for Whangamata.

John McClenaghan of J-Mac Entertainment has been meeting with Director Aisne Edwards, to add to the magic of Rob's set. Large scale projection and lighting that will wow the audience. Special attention is being given to a young talented cast to ensure the audience hear and see everything they have to offer.

Valda Ritchie has again stepped up as Wardrobe Mistress and is seen there with two of the Ensemble cast looking at costumes for their real estate scene. Remember the Society



Committee members Anna Maria Slater, Denise Boston, Valda Ritche, Therese Dixon, Mardi O'Shea, Greg Amos, John Norris, Ann Jacobs and Tracey Blake admiring the scale model of the set.



Ensemble members Therese Dixon and Denise Boston looking at costumes with Wardrobe mistress Valda Ritchie.

have a wardrobe where the public can hire costumes. Valda is the contact, her number is 021 119 2052.

This week, Lush Photography's Jodi La Grouw has spent time with cast taking some amazing publicity shots. These will be seen shortly on

ticketing and posters.

Tickets will be on sale early August. Dates for performances from 6th to 16th September. You won't want to miss it! Mark it on your calendar.

- Director Aisne Edwards

## Coastguard seeks new volunteers

Coastguard New Zealand, the charity saving lives at sea, has launched its 2023 volunteer recruitment campaign and is looking for good sorts keen to join our mission to help Kiwis enjoy their time out on the water safely and with confidence.

From Coastguard Rescue Vessel crew and shore crew to governance positions, Units across Aotearoa need fresh talent to ensure they can continue to do their lifesaving mahi.

Coastguard New Zealand CEO Callum Gillespie said it doesn't matter whether you're a seasoned boatie who ventures out every weekend or someone with a passion for supporting your

community, there is a role for you with Coastguard.

"Being on the water is a huge part of who we are as Kiwis. Our job is to make sure people are safe, by giving great advice as they head out, or helping them when they get in a spot of bother," he said.

"Volunteering for Coastguard is more than just our on-water capability. We have amazing shore crews from our radio operators to training coordinators whose efforts enable us to bring people home safely. It takes a crew to save a life."

Last year's inaugural campaign saw 136 new volunteers join Coastguard in roles both on and off the water with many new volunteers joining across the Coromandel region.

Coastguard Rescue Vessel Volunteer roles are available in Tairua-Pauanui, Whangamata, Whitianga and Thames.

"Being a Coastguard volunteer is an amazing journey, woven with countless rewards: an exhilarating and demanding role, acquiring top-notch Maritime qualifications and training, fostering leadership and teamwork skills, gaining invaluable risk assessment experience, personal growth and a clear roadmap for advancement," Callum said.

To learn more about volunteering with Coastguard and to apply to your local Unit, check out the dedicated volunteer website - [volunteers.coastguard.nz](http://volunteers.coastguard.nz)

**IT TAKES A CREW TO SAVE A LIFE.**



For more information, contact: Ben Parsons, Coastguard NZ Senior Communications Advisor [ben.parsons@coastguard.nz](mailto:ben.parsons@coastguard.nz)



## ROOFING

LOCALLY OWNED & OPERATED

For: **New roofing | Re-roofing**  
**Continuous spouting | Metal fascia**  
**Downpipes**

CALL US FOR YOUR FREE QUOTE

**Geordie Walden: 022 396 4143**  
[ccspouting@gmail.com](mailto:ccspouting@gmail.com) | [www.ccspouting.co.nz](http://www.ccspouting.co.nz)




Full Mechanical Repairs, Lubrications and Services, WOFs, Tyres, Tune ups, Batteries, Wheel alignments, Diagnostics.

Scan Tool.

AA Breakdown services  
First Assistance Breakdown services

P. 07 865 9435 • 201 Aickin Road, Whangamata  
M. 027 608 5770 • E. [wgmssc@extra.co.nz](mailto:wgmssc@extra.co.nz)

# Chocolatier couple's vision... from bean to bar



One of the best things about my job is meeting wonderful, smart people who create wonderful goods sourced from our planet for us all to enjoy!

Matariki Williamson Park Sunday market was another of those occasions.

I met up with Jessica Preston and she is the partner of Thomas Capdevielle, the French chocolatier founder of Coromandel Chocolate, who now sell their chocolate at Sunday Markets in Williamson Park, until they open their new store in August.

Jessica met Thomas here in Whangamata, about 10 years ago, even back then, Thomas knew he wanted to start up his niche market here.

They went back to France together, where Thomas studied for four years, and was given the prestigious title of Apprentice of the Year in France, studying in Bayonne, south west of France, and near Spain.

On their return to New Zealand, they moved to Matakana, where Thomas got a job as head chef at Honest Chocolate, but Thomas had a vision to make his own - from bean to

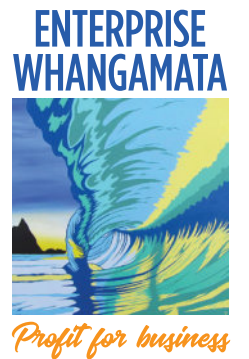
bar. They source their beans from Vanuatu, as local as you can get when it comes to sourcing in the Pacific. The cacao kernels arrive in New Zealand in 70kg bags and are roasted in a vintage machine, that Capdevielle sourced from a coffee roaster in Kerikeri, completing a seven year hunt.

You can contact Jessica and Thomas by email: coromandelchocolate@outlook.com or on instagram 'coromandelchocolate'. They have six chocolate bar flavours currently, and they are amazing!

- Jennie Black

# Whangamata launches new website

Enterprise Whangamata, the business association in Whangamata is in major growth phase. In the last nine months the organisation has been very busy. It has added over 50 new members, hosted several notable speakers at their Business After Five gatherings and become the go-to-group for funding distribution for the Southeast Ward - The Paradise Coast.



New chair of the group, Patrick Kerr is excited about the growth. "We all know the challenges ahead for the town and businesses, that's why this growth in numbers is so important" says Patrick. "The more numbers we have the bigger voice we have. Plus, our new committee is all keen and ready to go with several events in the planning for the next 12 months".

In the meantime, the association has just launched a new website. Three months in the planning, design and writing and it's an impressive shop window for the town, with over 50 businesses and associations featured.

Whether you're a local, live in a nearby town or just heading the Whanga way for a break, check out the new site, you'll find everything you need. [www.whangamata.org.nz](http://www.whangamata.org.nz)

- Shaun Fay

**\$1 WING WEDNESDAY**



**GRAB AS MANY OR AS FEW AS YOU WANT**

CONDITIONS APPLY - DINE-IN ONLY

**THREESOME THURSDAYS**



EVERY THURSDAY FROM 4.30PM GET 2 PINTS OF TAP BEER OR GLASSES OF HOUSE WINE AND ANY PIZZA.

CONDITIONS APPLY **ONLY \$39**

**#threesnotacrowd**

**FRIDAY@ CRAFT HAUS**



**\$10 PINTS** any PROPER PINT tap beer

**\$10 PIZZAS** any house pizza

**AFTER WORK SHOUT 2.30PM TO 5.30PM**

**SATURDAY 29TH JULY**

**Girls NIGHT OUT**

**YEAH THE GIRLS NIGHT VOL.2**

Pizza & Prosecco deal. \$10 cocktails. Karaoke. Come along ladies & let your hair down.

**RESERVE YOUR TABLE NOW!**

Conditions apply.

**CRAFT HAUS** 711 Port Road, Whangamata  
 Gastropub Est. 2022 @crafhauswhanga - [www.crafhauswhanga.co.nz](http://www.crafhauswhanga.co.nz)  
 07 865 6300

# Ocean Cycle produces 100% ocean waste clothing



David Allum shows a poncho made from plastic waste – incredible. Just \$110.

**Whangamatā News met up with David Allum (marine biologist) and Ash Morgan (instigator & founder) of Ocean Cycle at the Matariki Sunday Fair at Williamson Park.**

**Now here are two very clever guys – they make 100% of their apparel out of waste from our oceans. Here is their mantra...**

A sustainable future is the goal of Ocean Cycle. We are passionate ocean lovers who truly appreciate what the ocean offers us, and how important it is to maintain ocean health for future generations.

To create change in the waste we produce to better protect our oceans for future generations.

David told us a large proportion of all their profits go to their charity 'Outflo' to support cleaning up oceans and plastic waste.

I was really impressed with the ponchos, beach towels, shorts, tees and hoodies. They have also teamed up with Sustainable Oceans Society, selling their shirts with 50% of those shirts go to supporting the Great White Shark Programme, tagging great whites

with Shark Scientist Dr Riley Elliot, to map migration and threats to our oceans.

'Outflo' also has a great mission statement...

Stopping pollution and sediment outflow to our waterways and oceans is an urgent environmental imperative that requires comprehensive and coordinated efforts from individuals, communities, governments, and industries worldwide. By expanding on this idea, we can explore various approaches and strategies aimed at achieving this crucial objective.

Support these guys, buy the products, order online: [www.oceancycle.co.nz](http://www.oceancycle.co.nz)

David Allum says "With the increase of ocean bound plastic and the impact that this has on our wildlife, we at ocean cycle have created an environment to find alternative and sustainable materials that minimise ocean plastics. We are trying to make small change so others like yourself can do the right thing."

- Jennie Black

# LandSAR AGM and awards

Earlier this month the Current – 37 members (including new members) of the Tairua Pauanui Whangamata Land Search & Rescue Group, plus their local police liaison all met for their AGM.

Celebrating a proud history, the local Land Search and Rescue Group have been around for over 45 years, going further back, the Group was originally part of Tairua Pauanui combined Land Based Search and Rescue and Coastguard. The Group firmly cementing their place amongst all those who help the lost, the missing and the injured, during Operation Stockholm, a search that some readers may remember that took place in 1989. A massive search when searchers scoured the district for missing Swedish tourists, a Search and Rescue Operation that went on for months.

During the AGM, the Group of Search and Rescue volunteers discussed the very important business of Fundraising for a new Search and Rescue Base in Tairua, where the Group plan to store their specialised rescue equipment, ute and trailer. Whilst the Group are still yet to find a suitable location for the new base in Tairua, they are still searching for a suitable site and they are continuing to fundraise. At this present time, the main sources of fundraising come from the Groups 'world famous' steak sandwiches and sausage sizzle at the Whangamata Beach Hop, from the Emergency Services Door Knock appeal in Pauanui and Tairua, and through various donations from community groups.

This year, the AGM concluded with the prestigious 2023 Tairua Pauanui Whangamata Land Search and Rescue Awards where several of the Groups volunteers received their 5 Year Awards. Those recognised were, Gareth Beatson, Kevin Daly, and Wendy Aldrich.

On top of which there were two awards for 10 years of service for Ken Coulam and Andrew Hodgson.

Sarah Allison received her 15-year award, along with Rob Adam who received a huge accolade, in the form of an award for 20 years of service!

With the 2023 Certificate of Appreciation being awarded to Ron Le Noel and Harumi Takahashi for their many years of service, these awards highlight how committed our local Search and Rescues heroes are.

The Group are always interested to hear from potential new members and if you would like a glimpse into a day in the life of a Search and Rescue volunteer, please come along to one their monthly local training days, which are held on the second Sunday of each month – contact the Group secretary, Bryan Farquar for times and locations on 021 02372851.

There's no experience necessary and we have roles within the group for all ages and fitness levels from field team members, radio communications, incident management and IT roles. The Group is a Great team of people who help to support their local community in numerous ways.

- Jon McQueen,  
NZ Land Search & Rescue



WanderSearch training at Tairua.

FLOORINGXTRA.CO.NZ

**FLOORING TO SUIT YOUR STYLE**

CARPET • VINYL • TIMBER • LAMINATE • RUGS

Phone or email us! We're measuring & laying! View samples instore!

**WHANGAMATA FLOORING XTRA**

Whangamata | 636 Port Road | 07 865 8562 | [whangamata@flooringxtra.co.nz](mailto:whangamata@flooringxtra.co.nz)

**Love your view**

**fairview**  
EXCEPTIONAL WINDOWS & DOORS

WHANGAMATA  
07 865 8919  
[www.fairviewwhangamata.nz](http://www.fairviewwhangamata.nz)





"Throughout the process and successful sale Lindsay kept us fully informed on the progress and the reactions of prospective buyers by way of phone and text messages. She has been an excellent and knowledgeable person to deal with on our behalf and we have no hesitation in recommending her to any future sellers."



Thank you so much for all you have done for us, we will forever be grateful. You are absolutely fabulous!! We really do appreciate you ♡



## FOR SALE

\$1,950,000

1/111 Hunt Road, Whangamata

3 2 3.5

### MOTIVATED VENDORS MUST SELL

- Easy street-level private access to one-level ground-floor living
- Open-plan kitchen, dining, and lounge. Heat pump
- Excellent indoor-outdoor flow onto the timber deck and tiled patios
- Three double bedrooms. Master with walk-in wardrobe & ensuite
- Bathrooms with underfloor heating and heated mirrors
- Internal access garage accessible by lift
- Three and a half allocated covered secured car parks
- Outdoor shower - Wash area - Pet friendly



Scan to view property listing

Private viewings are welcome!

Lindsay Turnbull | 0274 238 093  
lindsay.turnbull@realty.co.nz



## FOR SALE

By Negotiation

2D/105 Aickin Road, Whangamatā

2 1 2

- Enjoy a relaxing holiday or carefree permanent living
- Fully refurbished apartment complex with heated swimming pool & spa
- Great premium location, a short walk to the beach and right in the centre of town
- Two double bedrooms and a spacious bathroom with laundry
- Open-plan lounge dining
- Two undercover, secure car parks plus a storage locker for extras



Scan to view property listing

Private viewings are welcome!

Lindsay Turnbull | 0274 238 093  
lindsay.turnbull@realty.co.nz



## SOLD

100 Mayfair Avenue, Whangamatā

5 2 2

- Fully fenced 662m<sup>2</sup> site with a substantial garage.
- Five bedrooms with storage.
- Sizeable lounge plus another separate family room
- Two bathrooms (both partially renovated) and an additional toilet
- Laundry ( tiling and finishing off needed)
- Office area with mountain views
- Extensive deck with the possibility of a covered entertainment area



Scan to view property listing

*Yours could be next!*  
Contact me today

Lindsay Turnbull | 0274 238 093  
lindsay.turnbull@realty.co.nz

# Bowls results

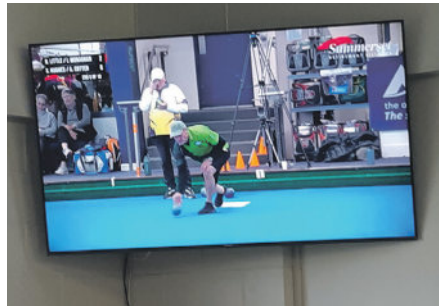


Saturday, 8 July, saw a gathering of bowlers down at the club while the rain poured down. We were there to see the TV streaming of a New Zealand Bowls match in Dunedin featuring our own Stephen Hughes and Alan Cotter playing Ian Monaghan and Brian Little in a qualifying round of the National Men's Pairs.

Stephen and Alan (representing Whangamatā and the Thames Valley Centre) held the lead for the first half of the game before Stephen played a fast drive looking to take the Jack bowl into the ditch to win the end. This he did, but unfortunately his shot bowl went to the right side of the ditch while the Jack settled in the left side where his opponents had four unchallenged bowls.

Try as they might, Stephen and Alan could not recover from that misfortune and lost, what was otherwise a very close and thrilling game of bowls 10 points to 15 points.

While Stephen and Alan are still Junior Bowlers (under 5 years experience), their opposition Ian Monaghan and Brian Little were anything but inexperienced, having finished second in the recent Taranaki Fours Tournament. With Ian Monaghan holding over 80 Wairarapa Centre Titles, they were indeed a force to be reckoned with.



We admired their skills and we were all very proud of way Stephen and Alan played.

In other news, the Weekly Winter Tournaments are still being well supported with the previous week's prize winners being:

**1st:** Robin Gillatt, Herb Armitage & Cris Day - Whangamata Bowling Club

**2nd:** Tim Fletcher, Richard Purdy & Jim Newman - Whangamata Bowling Club

**3rd:** Stephen Hughes, Stu Eliis & Peter Ryan - Whangamata Bowling Club

**4th:** Trevor Knight, Pam Phillips & Gail Knight - Mercury Bay Bowling Club

**Afternoon Prize:** Sandra Morris, Mike Jackson & Glenda Aitkenhead - Tairua Bowling Club

- Keith Miles

## Books

### BATHURST - 60 YEARS OF THE GREAT RACE

STEVE NORMOYLE, LUKE WEST

The grueling Bathurst 1000 is a race like no other: from the early days 60 years ago when ordinary road cars were pitted against one another in the toughest test imaginable to today's ultra professional Supercars. It's the Melbourne Cup of Australian motor racing.

Every one of those first 60 years is captured here in great pictures and fast moving anecdotes.

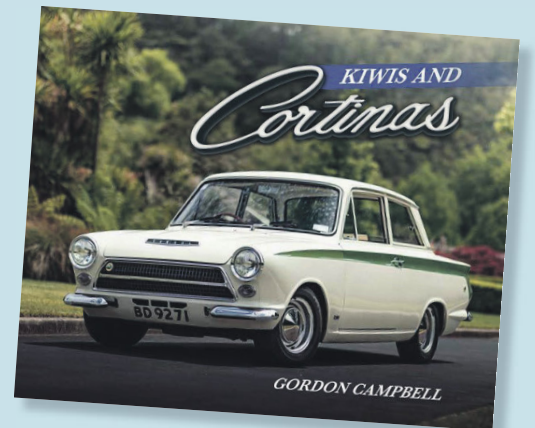


### KIWIS AND CORTINAS

GORDON CAMPBELL

There was a time when every New Zealander either owned a Ford Cortina or had a parent, sister, brother, grandparents or friend who did.

While we cant claim these hugely popular cars as our own, the Cortina's place in NZ motoring history makes it something of a kiwi icon. This book celebrates the Cortina in many guises, from survivor cars



to pristine originals, historic racers to thoughtfully modified examples.

**BOTH BOOKS ARE AVAILABLE FROM WHANGA BOOKS**

# Sports results

## RSA 500 CARD CLUB

**28 June:** An enjoyable day was had by all. The winner on the day was Snow Harris and Christine Adams won the raffle. Pauline Weatherley won the chocolate bar.

## MAH JONG

**7 July:** We had 44 members at Mah Jong. We welcomed 2 new Friday players from our Monday players.

The winners of play were...  
1st with 35 points: Philipa Dennison  
2nd equal with 34 points: Lois Madsen & Helen Cashen  
3rd equal with 29 points:

Rosemarie Rutherford & Kerry Gallagher

The special number drawn today was 16. Only one person acquired this number and that was Stephanie Prisk.

## TABLE TENNIS

**13 July:** The results were 1st Wayne Broome winning 9 games out of 12, and 2nd equal were Gary Small, Albert Driver, and Denise Wallace winning 7 games each out of 12. Some close games were had and lots of fun and laughter.

**Anyone is welcome to join us at 12.45 at the Whangamata club on Thursdays.**

# SPORT CLUBS SPORT TEAMS SPORT EVENTS

Any club, group or adjunct - all ages...



## We want your results!

Please send them to us at [whangamataneews@gmail.com](mailto:whangamataneews@gmail.com) - you can even include a photo or two.

It's **FREE** - it's what readers want and we want you!

# Whangamatā NEWS

For any enquiries about deadlines or content, simply phone Jennie - Editor 021 0232 1661



**We would like to acknowledge Pete Sheppard on his long, and successful career here at Whangamata Real Estate as he leaves us to head South.**



While we are sad to see Pete go we are excited for the new opportunities that lie ahead for Pete and his family. We are proud to have had Pete as part our team for the past 20 years, he has proven to be a top contributor to the company as well as his involvement within the community.

Twenty years in the real estate industry and staying loyal to the same company shows an impressive work ethic and positivity, Pete has consistently achieved successful results and has formed lifelong relationships with clients.

We wish Pete and his family all the best for their new adventure down in beautiful Nelson.

## Introducing our latest team!

When Chris began his real estate career in 2016 he partnered up with Pete which proved to be a great move for both. Together they achieved excellent results and their partnership enabled both to lead a balanced lifestyle with their young families.

As one door closes, another door opens. Welcome Katie Speedy! Katie will be joining her husband Chris and together they will provide you with the same professional service, knowledge, skills and commitment that has been afforded by Pete and Chris.

Contact this dynamic team for all your real estate requirements.



**Chris Speedy 021 747901**  
chris@whangamatarealestate.co.nz

**Katie Speedy 021 382 022**  
katie@whangamatarealestate.co.nz

# CLASSIFIEDS

## PUBLIC NOTICES

### Whangamata Grey Power Inc. Notice of Annual General Meeting

Friday, 28 July 2023, 10.00am  
Followed by Guest Speaker  
Venue: Whangamata RSA, Port Rd  
Enquiries to President on 021 323 719

## FOR SALE



### FOR SALE BRAND NEW

- Nouveau single bowl and drainer sink
- Macerator Sewage Pump (still in the box)

All offers considered.  
Ph 0272 108 190. Whangamata.



## DEATH NOTICE

### Beveridge, Mike.

Sincere gratitude to the Assisted Dying service.  
Beloved husband of Yvonne, much-loved father of Marcus and Guy, grandfather of Coltrane, Luke, Andrew, Giles and Antonia, great grandfather of Ira and Elias.  
Mike's poems, "Poems For Remembering", can be found online.

## PUBLIC NOTICES



The Whangamata Volunteer Coastguard Inc. Annual General Meeting is Thursday 31 August 2023 at 7.00pm in the Coastguard Operations Centre, 619 Beach Road, Whangamata.

### AGENDA FOR THE ANNUAL GENERAL MEETING OF THE WHANGAMATA VOLUNTEER COASTGUARD INC.

- 1 Apologies
- 2 Obituaries - Minutes silence
- 3 Minutes of the previous AGM
- 4 Matters Arising
- 5 Correspondence
- 6 President's Report
- 7 Annual accounts and Balance Sheet for last financial year
- 8 Election of Officers
- 9 Appoint Reviewer of Accounts for coming year
- 10 Set Annual Subscriptions for coming year
- 11 Service Awards
- 12 Honorary Life Membership
- 13 General Business

**SUPPER AND DRINKS WILL BE SERVED AFTER THE MEETING**

Pam Johnson  
SECRETARY

## CARAVAN FOR SALE

Jayco 28 Foot 2002



Need room for family this summer?  
Holiday workers need accommodation?

### AFFORDABLE TINY HOME!

Totally renovated, new carpet, vinyls, repainted interior, shower, toilet, double bed, oven, microwave, it really is chic! All the extras!

**WAS \$65,000 NOW \$55,000! Contact 0272 108 190.**



## Whangamatā Tides 2023

| JULY 2023   |              |            |              |            |             |            |             |            |          |             |
|---|--------------|------------|--------------|------------|-------------|------------|-------------|------------|----------|-------------|
| ☾ New Moon: 18 <sup>th</sup> ● Full Moon: 3 <sup>rd</sup> |              |            |              |            |             |            |             |            |          |             |
| Date  | High tide AM | Height (m) | High tide PM | Height (m) | Low tide PM | Height (m) | Low tide PM | Height (m) | Sun rise | Sun set     |
| 21  | Fri          | 9:23       | 1.7          | 21:46      | 1.8         | 3:17       | 0.5         | 15:22      | 0.4      | 07:24 17:19 |
| 22  | Sat          | 10:03      | 1.7          | 22:24      | 1.8         | 3:56       | 0.5         | 16:00      | 0.4      | 07:24 17:20 |
| 23  | Sun          | 10:42      | 1.7          | 23:03      | 1.8         | 4:34       | 0.5         | 16:40      | 0.5      | 07:23 17:21 |
| 24  | Mon          | 11:23      | 1.7          | 23:42      | 1.8         | 5:13       | 0.5         | 17:21      | 0.5      | 07:22 17:22 |
| 25  | Tue          |            |              | 12:06      | 1.7         | 5:53       | 0.5         | 18:05      | 0.5      | 07:22 17:22 |
| 26  | Wed          | 0:23       | 1.7          | 12:53      | 1.6         | 6:37       | 0.5         | 18:53      | 0.5      | 07:21 17:23 |
| 27  | Thu          | 1:08       | 1.7          | 13:44      | 1.6         | 7:24       | 0.5         | 19:45      | 0.6      | 07:20 17:24 |
| 28  | Fri          | 1:57       | 1.7          | 14:41      | 1.7         | 8:15       | 0.4         | 20:42      | 0.6      | 07:19 17:25 |
| 29  | Sat          | 2:51       | 1.7          | 15:41      | 1.7         | 9:11       | 0.4         | 21:42      | 0.5      | 07:18 17:26 |
| 30  | Sun          | 3:50       | 1.7          | 16:41      | 1.8         | 10:10      | 0.4         | 22:42      | 0.5      | 07:18 17:26 |
| 31  | Mon          | 4:51       | 1.8          | 17:40      | 1.8         | 11:09      | 0.3         | 23:42      | 0.4      | 07:17 17:27 |

| AUGUST 2023  |              |            |              |            |             |            |             |            |          |             |
|--|--------------|------------|--------------|------------|-------------|------------|-------------|------------|----------|-------------|
| ☾ New Moon: 16 <sup>th</sup> ● Full Moon: 2 <sup>nd</sup> & 31 <sup>st</sup> |              |            |              |            |             |            |             |            |          |             |
| Date   | High tide AM | Height (m) | High tide PM | Height (m) | Low tide PM | Height (m) | Low tide PM | Height (m) | Sun rise | Sun set     |
| 1  | Tue          | 5:52       | 1.8          | 18:36      | 1.9         |            |             | 12:06      | 0.2      | 07:16 17:28 |
| 2  | Wed          | 6:52       | 1.9          | 19:30      | 2.0         | 0:40       | 0.3         | 13:01      | 0.2      | 07:15 17:29 |
| 3  | Thu          | 7:49       | 1.9          | 20:23      | 2.1         | 1:36       | 0.2         | 13:55      | 0.1      | 07:14 17:30 |
| 4  | Fri          | 8:44       | 2.0          | 21:15      | 2.1         | 2:30       | 0.2         | 14:47      | 0.1      | 07:13 17:30 |
| 5  | Sat          | 9:37       | 2.0          | 22:06      | 2.1         | 3:23       | 0.1         | 15:39      | 0.1      | 07:12 17:31 |
| 6  | Sun          | 10:30      | 2.0          | 22:58      | 2.0         | 4:14       | 0.1         | 16:32      | 0.2      | 07:11 17:32 |
| 7  | Mon          | 11:24      | 1.9          | 23:49      | 2.0         | 5:06       | 0.1         | 17:25      | 0.2      | 07:10 17:33 |
| 8  | Tue          |            |              | 12:18      | 1.9         | 5:57       | 0.2         | 18:19      | 0.3      | 07:09 17:34 |
| 9  | Wed          | 0:41       | 1.9          | 13:14      | 1.8         | 6:50       | 0.3         | 19:16      | 0.4      | 07:08 17:35 |
| 10   | Thu          | 1:35       | 1.8          | 14:11      | 1.8         | 7:44       | 0.3         | 20:14      | 0.5      | 07:07 17:35 |
| 11   | Fri          | 2:29       | 1.7          | 15:10      | 1.7         | 8:39       | 0.4         | 21:14      | 0.5      | 07:05 17:36 |
| 12   | Sat          | 3:24       | 1.7          | 16:07      | 1.7         | 9:36       | 0.4         | 22:12      | 0.6      | 07:04 17:37 |
| 13   | Sun          | 4:20       | 1.6          | 17:01      | 1.7         | 10:31      | 0.4         | 23:08      | 0.6      | 07:03 17:38 |
| 14   | Mon          | 5:14       | 1.6          | 17:51      | 1.7         | 11:23      | 0.4         | 23:59      | 0.5      | 07:02 17:39 |
| 15   | Tue          | 6:05       | 1.6          | 18:37      | 1.7         |            |             | 12:11      | 0.4      | 07:01 17:40 |
| 16   | Wed          | 6:52       | 1.7          | 19:19      | 1.8         | 0:45       | 0.5         | 12:55      | 0.4      | 06:59 17:40 |
| 17   | Thu          | 7:36       | 1.7          | 19:59      | 1.8         | 1:28       | 0.5         | 13:36      | 0.4      | 06:58 17:41 |
| 18   | Fri          | 8:17       | 1.7          | 20:37      | 1.8         | 2:08       | 0.5         | 14:15      | 0.4      | 06:57 17:42 |

# Only the BEST TRADIES will do! Use Locals... For Locals... Support Locals!

## GYM



**OPEN 24 HOURS  
7 DAYS**

Casuals Welcome  
Group Fitness Classes  
Super Affordable

**104 Lindsay Road (opposite skate park)  
Phone 07 865 6502**  **FREE WI-FI**

## EARTHWORKS



- Bobcat & excavator
- Tight access work
- Site works
- Topsoiling
- Driveways
- Hole drilling
- Concrete prep
- Cartage

**Shay 021 742 966 | www.blackhillearthworks.co.nz  
info@blackhillearthworks.co.nz**

## IT SUPPORT



**FIBRE INTERNET  
now available to  
order from Boot I.T.**

We are the Coromandel's only local Fibre Internet Provider, and the ONLY provider that offers 7 days per week support.

Call us on 0800 242 266 to find out more.

**Boot it.**

## PAINTER

**Gavin Johnson  
PAINTER & DECORATOR**

Interior/Exterior Painting  
Wallpapering  
Cedar Cleaning and Restoration Service



**0224 552 363**  
brushstrokeswhangamata@gmail.com

## HIRE / SUPPLIES

**Bubba's**

**Outdoors & Hire**  
321 Casement Rd,  
Whangamata  
**OPEN 7 DAYS**

- LPG Refills • Ice • Bait • Rods • Reels
- Tackle • Chandlery • General Hire

**P. 07 865 7464**

## LANDSCAPING

**Beach Contractors  
& Landscape Supplies**

**LANDSCAPING SUPPLIES:**

|                                  |   |   |
|----------------------------------|---|---|
| Bark, mulch, compost and topsoil | Sand, lime chip, river stones and pebbles | Cement, builder's mix and a range of metals |
|----------------------------------|---|---|

Delivery service available

Whangamata Yard: 2546 Waihi Whangamata Rd, M. 027 261 1262  
Waihi Beach Yard: 691 Waihi Beach Rd, P. 07 863 5340

## CONCRETE

**BROWNMORE  
CONSTRUCTION**

**CONCRETE CONTRACTORS**

Any Concrete Requirements: Slabs, driveways, patios, paths, etc  
All types of concrete - colour - finish  
Council Permits for Vehicle Crossings  
Excavation to finished product • Saw cutting & drilling

*We take pride in doing a quality job at a competitive rate*

**REX: 027 285 5489**  
P. 07 863 3364 • office@brownmoreconstruction.co.nz  
**www.brownmoreconstruction.co.nz**

## LAWNS

**Coastal  
Lawns & Landscapes**

PROFESSIONAL • QUALIFIED • RELIABLE

- FULLY INSURED
- FRUIT TREE CARE
- LAWN MOWING
- IRRIGATION
- TREE PRUNING
- LANDSCAPE MAINTENANCE

**GREG FOSTER 021 0278 6990**  
E. info@coastallawns.co.nz

## FENCING

RURAL FENCING • RESIDENTIAL FENCING  
POST AND RAIL • RETAINING WALLS  
POLE SHED BUILDINGS  
ORCHARD BUILDS & MAINTENANCE

**coastline  
FENCING LTD**

**BLAIN TEMPELMEYER 027 784 6538**  
coastlinefencing7@gmail.com

## PAINTER

**Coastline  
Property Painters**



Protecting your investment    Communication is everything  
Interior ■ Exterior ■ Roofs    Updates & photos as your job progresses

Call Richard Upton: 0274 884 881 / www.coastlinepropertypainters.com

## DOG WASH

**CoroVets** **NEW TO WHANGAMATĀ!**

**DOG WASH SYSTEM IS HERE**



Shampoo, flea shampoo, condition, rinse & blow dry  
\$10 coins for 10 mins  
\$11 eftpos for 11 mins  
or come on in and get tokens

**215 Aickin Rd, outside the building frontage - 7 DAYS**

## BUILDING WASHING



**COROWASH**  
www.corowash.co.nz

**COROMANDEL HOUSE & BUILDING WASHING**

No Mould, No Salt Pure Satisfaction  

info@corowash.co.nz  
Bronson Phillips 0223991130

## CURTAINS / BLINDS



Specialising in:

- Curtains
- Roman Blinds
- Cushions
- Duvet Covers
- Roller Blinds
- Shutters

**croft design**

306 CASEMENT ROAD, WHANGAMATA  
M. 0274 481 957 | E. bethlord12@gmail.com

## CURTAINS / BLINDS

**Curtains and Blinds**  
Whangamatā

LOCALLY OWNED AND OPERATED

- Curtains
- Romans Blinds
- Roller Blinds
- Venetian Blinds
- Slats
- Shutters

100% Mobile Service  
We come to you  
Free Measure and Quote

**Call us on 027 4777 916**  
info@curtainsandblinds.co.nz

## PAINTER

**Gerards Painting  
Services**



**Small jobs are my speciality!**

PHONE:  
**021 108 5996**

# Use Only the Best Services in our Community! Use Locals... For Locals... Support Locals!

## HANDYMAN

### HANDYMAN

30 yrs experience, specialising in:

- Bathroom, deck & building repairs
- Gib fixing & plastering
- Interior /exterior painting

Please ring Rex on 021 997 428

## BUILDING WASHING

### HOUSE WASHING

Exterior house or commercial building wash, roof wash, fences, driveway, patios – soft-wash for best moss and lichen clean and treatment, exterior window cleaning, or general water blasting, 100m of hose so access is no problem  
Prompt local service with 20 years' experience

Ph 0800 747 787 email atlasgroup@xtra.co.nz  
or dial Anton direct on 027 313 4386

## LOCKSMITH

### Homesafe Locksmiths & Services

ONE key to fit ALL doors!  
FREE advice on your lock requirements

Ian McAuley (Macca) Owner/Operator  
• 126A Tamaki Rd, Whangamata  
• P 021 719 495 or 07 865 7092 • E imacca2003@yahoo.co.nz

## AUTOMOTIVE & BOATS

### SERVICING IS OUR GAME!

Repco stockist  
ONLY HONDA agent in town!



Your locals – Matt, Beth & the team!

### BOAT TRAILERS, CARS, CLASSIC & HOT RODS OF COURSE

Bookings are essential: ph 07 865 9073  
or email office@jcdcustoms.co.nz

An extensive range of Repco products now in store!

Aickin Rd, Whangamata  
(next to Bunnings)

Phone 865 9073  
office@jcdcustoms.co.nz

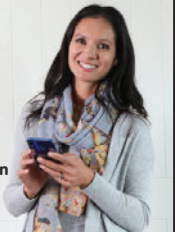
Monday-Friday  
from 8am

## CLEANING



we'll take care of it

- Carpet Cleaning
- Pest Control
- Flood & Fire Restoration
- Stain Removal
- Upholstery Cleaning



07 863 8358 or 0800 225 552

whangamata@jae.co.nz



## ELECTRICAL



"Totally Dependable"

AVAILABLE 24/7

Residential | Commercial | Heat Pumps  
Fire Systems

P. 865 9309 | whangamata@laserelectrical.co.nz  
NEW LOCATION: 100 Lindsay Road

## PLUMBING



- ✓ Plumbing ✓ Gas fitting
- ✓ Drainage ✓ General maintenance

Phone 865 7151 | Whangamata  
whangamata@laserplumbing.co.nz

## BUTCHER

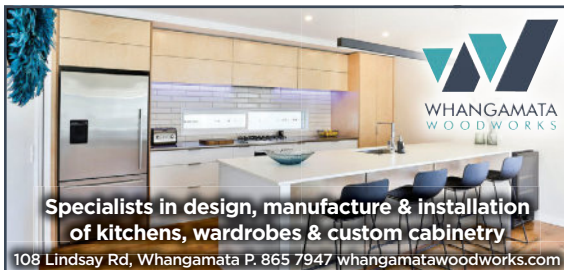
### MEAT AT THE BEACH

#### Goat Now Available

Extensive choices with Rack of Lamb, coiled sausages (Boerewors, Chorizo, Cumberland) Split, boneless and Kiev Chicken, Bolar roasts, topside roasts & more...

601 PORT ROAD, WHANGAMATA P. 07 865 7241  
MON-FRI 8.30AM-5PM • SAT 8.30AM-3PM

## KITCHEN



Specialists in design, manufacture & installation of kitchens, wardrobes & custom cabinetry

108 Lindsay Rd, Whangamata P. 865 7947 whangamatawoodworks.com

MASTERCRAFT KITCHENS

## TREE SPECIALIST



### QUALIFIED ARBORIST

30 years experience in all aspects of tree work

- Pruning
- Hedge trimming
- Debris chipped
- Felling
- Confined space
- Free quotes
- Storm damage dismantling and more

Professional and reliable service – fully insured

Phone Greg Nicholson on 07 865 6769 or 021 133 0937  
email: nicholsontreeservices@hotmail.com

## PODIATRY

### Pedicare Services

Professional Foot Care

Alison Walkington  
Registered Nurse

Home visits by appointment

Mobile 027 663 2320 or  
email alison.c.walkington@gmail.com



## POOL & SPA SERVICES



MOBILE POOL & SPA CLEANING SERVICES

Sharleena Tucker ~ poolqueen@outlook.co.nz

027 316 3384  
Coromandel Peninsula

## WINDOW CLEANING



Your ecofriendly window cleaning service.

Mike Horton  
info@purenclean.co.nz

M 021 501 324  
www.purenclean.co.nz

## HEAT PUMPS



We Sell and Service all Major Brands

Your heat pump specialist  
On site marine & commercial refrigeration

Call today for a hassle-free quote

027 933 8599

www.reefrefrigeration.co.nz

# Only the BEST TRADIES will do! Use Locals... For Locals... Support Locals!

## PLUMBER

**Russell CHOAT**  
**GAS & Plumbing**  
Whangamata  
FOR ALL YOUR GAS-FITTING, PLUMBING,  
DRAINAGE & ROOFING REQUIREMENTS  
Registered craftsman & member  
of Master Plumbers  
M. 0274 714 869 E. CHOATS@XTRA.CO.NZ

## ELECTRICIAN / DOG GROOMER

**Rusty Sparks**  
EVERYTHING  
ELECTRICAL  
Residential, Commercial,  
Data, Alarms  
021 800 017  
admin@rustysparks.nz

**PIMPED PUPS GROOM ROOM**  
021 850 017  
WHANGAMATA

## BINS

Skip Bins, Wheelie Bins,  
Front Load Bins  
*We can help!*  
Contact us today!  
**smart environmental**  
0800 4 MY BIN - www.smartbins.co.nz  
Proudly 100% Kiwi owned

## BOARDING KENNEL / CATTERY

**SPOT X**  
BOARDING KENNELS  
AND CATTERY  
Quality care and facilities in a rural setting  
Office hours: 9am-12 noon and 3-5pm daily  
INSPECTION WELCOME  
Ph 07 865 8242 or 027 624 3890  
Annette Gillatt  
4km south of Whangamata on the main road

## REFRIGERATION & AIR CON

**TIDELINE REFRIGERATION**  
WHANGAMATA  
\* HEAT PUMPS \* REFRIGERATION  
\* AIR CONDITIONING \* VENTILATION  
SERVICING IN THE COROMANDEL AREA  
0272121994 - 0277251820  
TIDELINEREFRIGERATION@GMAIL.COM  
WWW.TIDELINEREFRIGERATION.COM

## TREE SPECIALIST

• Tree felling & pruning  
• Hedge trimming  
• Stump grinding  
• Fully insured  
• Qualified arborist  
**TREECARE WHANGAMATA LTD**  
Contact Ben 021 827 355  
treecarewhangamata@gmail.com

## WARDROBES

**WAIKATO WARDROBES**  
Nadine & Duncan Waterson - Servicing the Coromandel  
• Custom Wardrobe Systems  
• Entertainment and Study Units  
• Sliding Doors  
• Home Storage-Garage / Laundry  
07 850 9959 / 027 4793 750 / waikatowardrobes.co.nz  
info@waikatowardrobes.co.nz

## WARDROBES

**WD WARDROBES DIRECT**  
Steve Parkinson  
Central, East & South  
021 0733 100  
steve.parkinson@xtra.co.nz  
ALSO SERVICING WHANGAMATA  
www.wardrobesdirect.co.nz  
Showroom  
Unit 2,  
63 Morrin Rd  
St John's  
Auckland

## LAUNDRY

**WHANGA LAUNDROMAT**  
The only locally owned & operated laundromat in town!  
OPEN 24 HOURS - 7 DAYS A WEEK  
CASEMENT RD, WHANGAMATA (OPPOSITE WAITOMO FUEL)

## SCAFFOLDING

**WHANGAMATA SCAFFOLDING**  
• Mobile scaffolding  
• Roof edge protection  
• Construction scaffold  
Servicing Whangamata and surrounding areas  
Please ring 022 076 0160 or  
email whangamatascaffolding@gmail.com  
102 Lindsay Road, Whangamata Est 2014

## TYRE & BATTERY SERVICES

**WHANGAMATA TYRE & BATTERY**  
KUMHO TYRES 7  
Car tyres / Wheel alignment  
4WD tyres / Tyre repair  
Wheel balance  
Small implement tyres  
Batteries - car & marine  
Phone Simon 865 7698  
Cnr Port & Ocean Rd,  
Whangamata  
www.challenge.net.nz

## WINDOW & DOOR SERVICES

**WHANGAMATA WINDOW & DOOR SERVICES**  
Bryce Hall  
M. 027 282 2057  
Ph. 865 9714  
// Reglaze // Repairs // Maintenance  
// Retro Fit Double Glaze  
whangamatawindowdoorservices@xtra.co.nz

## UPHOLSTERY

**WINDWOVEN UPHOLSTERY**  
For all your upholstery needs  
• Home • Office • Boat • Caravan  
Available 6 days for your convenience  
Free quotes  
07 865 8774  
021 066 5788

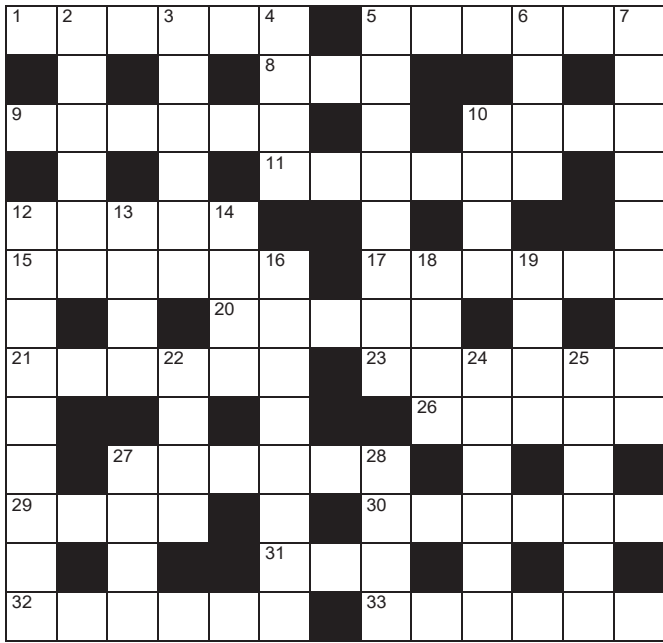
## HOME SERVICES

**YourLocal**  
NZ's Trusted Home Services  
Avi@yourlocal.nz - www.yourlocal.nz - 022 534 5478  
We specialise in  
• Exterior house wash, windows, driveways, patios, decks,  
fences & roofs - Commercial, residential, rural, new builds  
& painters prep - Pests treatment (fumigation)  
• Rodents & wasps - Chimney sweeping - Roof treatments  
**BUSINESS FRANCHISE FOR SALE**  
We cover Coromandel, Thames, Waihi, Waihi Beach, Whitianga, Whangamata

## CLOTHING

**YUKEYS**  
3620  
Clothing Alterations and Repairs  
LADIES - MEN - CHILDRENSWEAR  
Open Tuesday to Friday 8.30am to 1.30pm  
Saturday 9am to 12pm  
105 Aickin Road (just off Port Road)  
Whangamata  
M. 021 0289 3968

### QUICK CROSSWORD



- Across**
- Harbour with moorings (6)
  - Get down (6)
  - Swamp (3)
  - Be filled with wonder (6)
  - Prong (4)
  - Snare (6)
  - Hurl (5)
  - Car or property for lease (6)
  - Jerk (6)
  - Pulped food (5)
  - Said (6)
  - Less bright (6)
  - Refund (5)
  - Ignites (6)
  - Assist in wrongdoing (4)
  - Arousing (6)
  - Indebted to (3)
  - Ship's flag (6)
  - Person who dies for a cause (6)
- Down**
- Land suitable for crops (6)
  - Make up (6)
  - Competent (4)
  - Troubled (8)
  - Take hold of (4)
  - Act of betrayal (9)
  - Move slowly (aircraft) (4)
  - Prevent plan being fulfilled (9)
  - Data (abbr) (4)
  - Stare with mouth open (4)
  - Chilled processed meat (8)
  - Low dam (4)
  - Pack firmly (4)
  - Become joined (4)
  - Personal journal (6)
  - Without difficulty (6)
  - Not so much (4)
  - Appear (4)

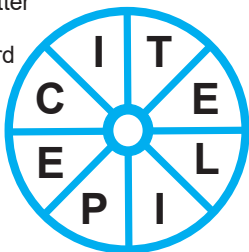
### TRIO

The same three-letter sequence will complete each of the four words

\_\_\_CH  
E\_\_\_OR  
AU\_\_\_  
BAN\_\_\_

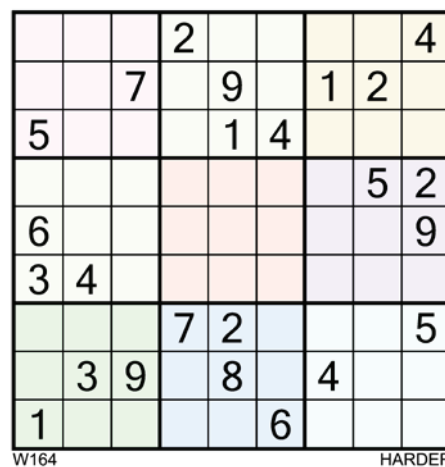
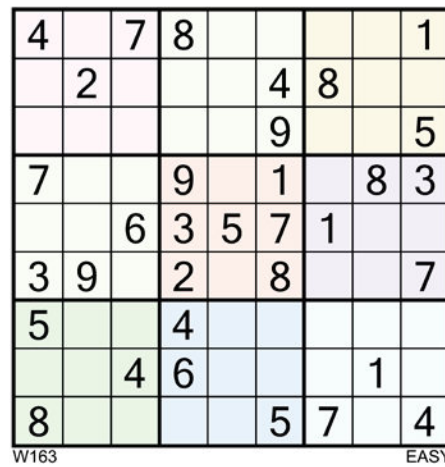
### WORDWHEEL

Add one letter to make a 9-letter word reading clockwise or anti clockwise



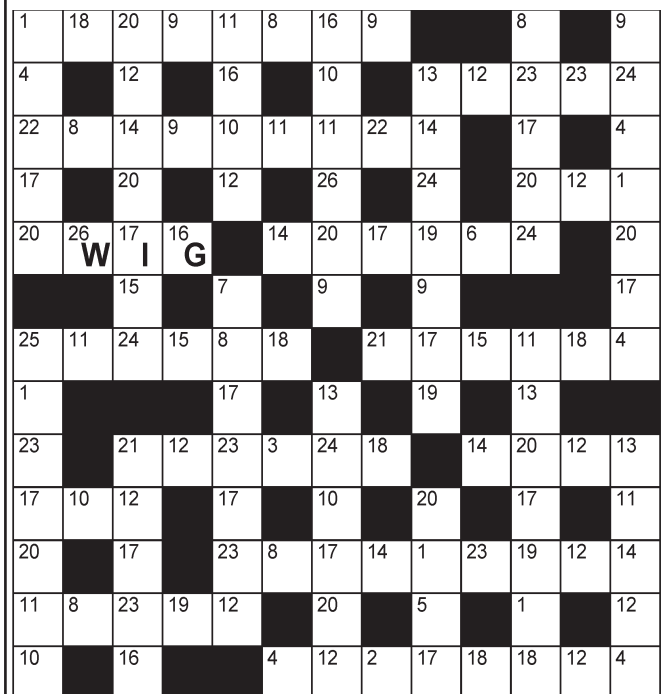
### SUDOKU

Fill the grid so every row, column and 3x3 box contains the numbers 1-9



### DECODER

Each number below represents a different letter. Find the correct letter for each number by working out the word from the letters given. To keep track, cross the letters off on the grid below.



| A  | B  | C  | D  | E  | F  | G  | H  | I  | J  | K  | L  | M  | N | O | P | Q | R | S | T | U | V | W | X | Y | Z |
|----|----|----|----|----|----|----|----|----|----|----|----|----|---|---|---|---|---|---|---|---|---|---|---|---|---|
| 1  | 2  | 3  | 4  | 5  | 6  | 7  | 8  | 9  | 10 | 11 | 12 | 13 |   |   |   |   |   |   |   |   |   |   |   |   |   |
| 14 | 15 | 16 | 17 | 18 | 19 | 20 | 21 | 22 | 23 | 24 | 25 | 26 |   |   |   |   |   |   |   |   |   |   |   |   |   |
|    |    |    | G  |    |    |    |    |    |    |    |    |    |   |   |   |   |   |   |   |   |   |   |   | W |   |

### SOLUTIONS

#### CROSSWORD

**Across:** 1. Marina, 5. Allight, 8. Bog, 9. Marvel, 10. Time, 11. Entrap, 12. Fling, 15. Rental, 17. Twitch, 20. Puree, 21. Spoken, 23. Dimmer, 26. Repay, 27. Lights, 29. Abet, 30. Erotic, 31. Owe, 32. Ensign, 33. Martyr.  
**Down:** 2. Arable, 3. Invent, 4. Able, 5. Agitated, 6. Grip, 7. Treachery, 10. Taxi, 12. Frustate, 13. Info, 14. Gape, 16. Luncheon, 18. Weir, 19. Tamp, 22. Knit, 24. Memoir, 25. Easily, 27. Less, 28. Seem..

#### DECODER

|    |   |    |   |    |   |    |   |    |   |    |   |    |   |    |   |    |   |    |   |    |   |    |   |    |   |
|----|---|----|---|----|---|----|---|----|---|----|---|----|---|----|---|----|---|----|---|----|---|----|---|----|---|
| 14 | A | 2  | V | 3  | Z | 4  | D | 5  | X | 6  | K | 7  | Q | 8  | U | 9  | H | 10 | R | 11 | O | 12 | E | 13 | P |
| 15 | S | 16 | F | 17 | G | 18 | L | 19 | C | 20 | T | 21 | B | 22 | M | 23 | N | 24 | Y | 25 | J | 26 | W |    |   |

#### SUDOKU

|   |   |   |   |   |   |   |   |   |
|---|---|---|---|---|---|---|---|---|
| 1 | 7 | 5 | 9 | 4 | 6 | 2 | 3 | 8 |
| 2 | 3 | 9 | 5 | 8 | 1 | 4 | 6 | 7 |
| 8 | 6 | 4 | 7 | 2 | 3 | 9 | 1 | 5 |
| 3 | 4 | 2 | 6 | 5 | 9 | 8 | 7 | 1 |
| 6 | 5 | 8 | 1 | 7 | 2 | 3 | 4 | 9 |
| 7 | 9 | 1 | 4 | 3 | 8 | 6 | 5 | 2 |
| 5 | 2 | 6 | 8 | 1 | 4 | 7 | 9 | 3 |
| 4 | 8 | 7 | 3 | 9 | 5 | 1 | 2 | 6 |
| 9 | 1 | 3 | 2 | 6 | 7 | 5 | 8 | 4 |

|   |   |   |   |   |   |   |   |   |
|---|---|---|---|---|---|---|---|---|
| 8 | 6 | 2 | 1 | 9 | 5 | 7 | 3 | 4 |
| 9 | 7 | 4 | 6 | 8 | 3 | 5 | 1 | 2 |
| 5 | 1 | 3 | 4 | 7 | 2 | 9 | 6 | 8 |
| 3 | 9 | 1 | 2 | 4 | 8 | 6 | 5 | 7 |
| 2 | 8 | 6 | 3 | 5 | 7 | 1 | 4 | 9 |
| 7 | 4 | 5 | 9 | 6 | 1 | 2 | 8 | 3 |
| 6 | 3 | 8 | 7 | 1 | 9 | 4 | 2 | 5 |
| 1 | 2 | 9 | 5 | 3 | 4 | 8 | 7 | 6 |
| 4 | 5 | 7 | 8 | 2 | 6 | 3 | 9 | 1 |

TRIO: DIT WORDWHEEL: EPILPTIC

All puzzles © The Puzzle Company

**Power and performance**

**135 MK II**  
38cc, 16" Bar, with a Bonus Carry Case  
**\$699**

**572 XP**  
70.6cc, 24" Bar, Professional Chain Saw  
**\$2,379**  
RRP \$2689

**TC138T**  
Rear Catcher Model, Husqvarna Series V-Twin Engine, 38" Cut  
**\$7,699**  
\$8,790 RRP

**Z242F**  
Kawasaki FR Series V-Twin - 21.5hp - 42" Cutting Width  
**\$8,740**  
\$9,990 RRP

**PRESCOTTS GARAGES** SINCE 1972

Shaun Prescott, Sales Manager  
021 285 4870 / 07 864 7801  
1 Hikui Settlement Road, Hikui  
[www.prescottsgarages.co.nz](http://www.prescottsgarages.co.nz)

**5 YEAR DOMESTIC WARRANTY#**  
# Terms and Conditions apply, see HUSQVARNA.COM for details.

**We sell and service Husqvarna's huge range of product. We also demonstrate and deliver.**

Visit [husqvarna.com](http://husqvarna.com) today

Offers valid while stocks last at participating authorised Husqvarna Dealers only.