

PARADISE COAST

# Whangamatā NEWS

ISSUE 103 –  
20 OCTOBER, 2023

FREE  
COPY

PLEASE  
TAKE ONE!

## Adventure Race

Map reading essential

P22-23

Photo by Peter Stretch  
Film, Video, Music, Photography & Digital Imagery  
0274 581 179 Facebook: Pete Stretch Photography



**BY LOCALS, FOR LOCALS, ABOUT LOCALS.**



LIKE US!

**WE WELCOME YOUR CONTRIBUTIONS!**

EMAIL [WHANGAMATANNEWS@GMAIL.COM](mailto:WHANGAMATANNEWS@GMAIL.COM) • FACEBOOK [@WHANGANEWS](https://www.facebook.com/WHANGANEWS)

SEE ALL OUR EDITIONS LIVE AT  
[WWW.WHANGAMATANNEWS.NZ](http://WWW.WHANGAMATANNEWS.NZ)  
EDITORIAL & MEDIA SALES:  
JENNIE BLACK – 021 0232 1661

**HOME DELIVERED TO WHANGAMATA**



# Welcome to the second October 2023 edition of Whangamata News

- a magazine By Locals, For Locals, About Locals

Whangamatā NEWS <a href="http://www.WhangamataNEWS.nz">www.WhangamataNEWS.nz</a>	
<b>EDITOR &amp; SALES DIRECTOR</b> <b>Jennie Black</b> Phone 021 0232 1661 <a href="mailto:WhangamataNews@gmail.com">WhangamataNews@gmail.com</a>	<b>PUBLISHING</b> Printed by Beacon Media Group. Published by Whangamatā News 2021 Ltd
<b>SPORTS REPORTER &amp; PHOTOGRAPHER</b> <b>Mark James</b> Phone 021 668 469	All content featured in Whangamatā NEWS Limited is subject to copyright in its entirety and may not be reproduced in any form without permission from the Publisher. Any material supplied for publication is at the submitter's risk. All information is believed to be true by the Publisher at the time of printing. Views expressed in Whangamatā NEWS Limited are not necessarily those of the Publisher.
<b>ART DIRECTOR</b> <b>Anna Gledhill</b> <a href="mailto:WhangamataNewsArt@gmail.com">WhangamataNewsArt@gmail.com</a>	

## Singers wanted

Carols in the Park 2023 organisers are calling for singers to join the Christmas Carols Choir. We hope to welcome back all our 'regulars' and heaps of new choristers - young and not so young alike. Anyone interested should contact Denise Boston 021 122 6564. She urges anyone who enjoys a singalong to roll up and join the choir: "It will only take a few hours out of your life for a big return and you'll be

making a very special contribution to the Community". She confirms you don't need to be a great singer, just enjoy a good singalong and be prepared to put your heart, soul and a bit more into it.

**The first rehearsal to announce the programme and set rehearsal dates will be on Sunday, 29 October, 4pm at the Baptist Church.**

**All interested please contact Denise Boston by emailing [denise@newyou.net.nz](mailto:denise@newyou.net.nz) with your name and phone/email details.**

## Poet's Corner

### A neighbour cuts down a 50-year-old totara tree

There is more light now  
but less life.  
Dead wood silence  
lies over the neighbourhood.  
No birds calling  
no children shouting  
as if in disbelief.

The living do not believe in death  
so imagine the reappearance  
of the departed.  
A dream broken  
by sawdust reality.

"Mr Neighbour - why did you cut down  
your Totara tree?"  
"It dropped too many leaves  
that were prickly underfoot".

(He really did say that).

"Mr Neighbour - why don't you  
plant another Totara tree  
in the park down the road?"  
"Good idea" said his synthetic mouth.  
"Idiot" said his eyes.

Over the fence  
the peach tree leaves  
will soon brown and fall.  
From a high branch a Tui ruffles  
feathers,  
takes flight in search of Totara berries.  
Perhaps she will find them,  
perhaps not.

- Scott Vennell

## Hon Scott Simpson: MP For Coromandel

As I write this, the final shape of the new 54th Parliament has yet to be confirmed, but I want to thank everyone who engaged in our democratic process. Voting is a simple, but effective way to hold governments and political parties to account. Elections should be, and are, a contest of ideas, policy and vision for the future.

I'm grateful and honoured to be returned as the Member of Parliament for Coromandel, to continue representing our region, our communities, and our people. It's a position and responsibility that I don't take lightly or for granted. As part of a new National-led Government, I'm looking forward to being part of a team that will bring positive change for people not just here locally but across New Zealand.

After six long years, New Zealanders have voted for change. Nationwide, we have experienced a decline in law and order, education standards have slipped, and everyday Kiwis feel like they can't get ahead. I'm confident that under the leadership of our new Prime Minister we can turn things around. Christopher Luxon has a proven track-record of getting results and he's keen to start implementing

practical policies as soon election results have been finalised and the 54th Parliament is sworn-in.

In addition to these issues which affect the entire country, we have some local issues which require immediate attention. State Highway 25A remains closed and I was very critical that it took six months before a decision on what to do was made. It took far too long to get to that point, but now that work is well under way, I'm pleased with the progress that is being made and I've still got my fingers crossed that the road can be reopened before Christmas.

As summer approaches it's vital that we get the message out that the Coromandel is open and that we're welcoming visitors back with open arms. Once we have a new Conservation Minister in place, I will be pressing them to get the Cathedral Cove track open again. This is a major drawcard for both local and international tourists. We need it back up and running.

In the meantime, I'm back at work and my office is open. Never hesitate to be in touch.

- Authorised by Scott Simpson MP,  
614 Pollen St, Thames



# ROOFING

## LOCALLY OWNED & OPERATED

For: **New roofing | Re-roofing**  
**Continuous spouting | Metal fascia**  
**Downpipes**

## CALL US FOR YOUR FREE QUOTE

**Geordie Walden: 022 396 4143**  
[ccspouting@gmail.com](mailto:ccspouting@gmail.com) | [www.ccspouting.co.nz](http://www.ccspouting.co.nz)

## We provide a wide range of services for your Farm Animals:

- Animal Health Plans
- Springtime Emergency Services
- Ultrasound Pregnancy Testing
- Mastitis Management & Prevention
- Lameness Management & Prevention
- Trace Element testing
- Body Condition Scoring
- Reproduction Programmes
- Debudding & Dehorning
- Vaccinations
- Geldings



# CoroVets

**Waihi Clinic:**  
10 Mueller St, Waihi

**Whangamata Clinic:**  
215 Aickin Road, Whangamata

**Tairua Clinic:**  
1 Wharf Road, Tairua

**0800 267 683**  
[farm@corovets.co.nz](mailto:farm@corovets.co.nz)  
[www.corovets.co.nz](http://www.corovets.co.nz)





# Fire report



The brigade has had a constant run of calls throughout 2023, medical assistance and motor vehicle accidents being the majority.

Fire calls have been reduced but currently new risks have developed. Our weather prediction for a hot, dry season brings huge risks to our region.

To limit damage clear gutters, remove vegetation and items next to buildings and ensure a four metre high and wide clearance along any routes for access along with clear property numbers.

Another fire risk which has huge repercussions is lithium ion batteries and electric vehicles. Follow all guidelines, use compatible charging devices and be aware of potential fuel sources if a malfunction develops.

Traffic volumes are high with the Kopu link being shut. Allow plenty of time and please avoid taking any risks. If any issues arise contact appropriate agencies as the build up of blocked vehicles becomes dangerous on the blind corners.

Our open day was a huge success with a constant flow of people looking through the appliances and



equipment.

Highlights were the information displayed on all aspects of risks in our community including a large display for our rural communities. We also had a display of our crew dismantling a car with the jaws of life with two passengers needing to be removed. Always a crowd favourite.

Wishing you a great run up to the new year. Stay safe.

- CFO Nigel Airey



**Archies**  
Arch support jandals  
in store now

**Tango's**

Whitianga 07 866 4465 | Whangamata 07 865 8088  
**WWW.TANGOSSHOES.NZ**

AfterPay, Zip & Laybuy welcome.

*Beautiful art,  
something for everyone*

**HAVEN**

Port Road  
Whangamata  
(across from Table Talk)

**Victoria's Closet**

**Quality labelled pre-loved new & near-new clothing, shoes & handbags**

**AFFORDABLE PRICES**

Open Friday to Monday from 10am  
Ph 0274 989 360

Port Road, next to Whangamata Pharmacy

**Table Talk**

**HUSKI**™ Beautiful new colour range in store now!

652 Port Rd - in the heart of Whangamata. Phone 07 865 7514.





## Norway would; We wouldn't

Recent correspondents to the Herald have quoted the successful Scandinavian economies with higher taxes, left wing governments and superior pension plans etc.

Comparing our economy to theirs is like comparing apples with elephants.

Norway's strong economy and their neighbours' for example, are largely funded by oil and gas. In fact Norway has recently approved the development of 19 oil and gas fields with investment of over \$US18 billion, including tax incentives, to secure production for decades into the future. Their economy will benefit from the added value and employment that follows. Norway has become key to Europe's energy security and is now the continent's largest gas supplier. All of this despite left wing government and strong opposition from environmental groups.

Bruce Cotterill last week expressed the need for us to find additional sources of revenue to bolster our struggling economy. He cites the example of Guyana, a tiny country boasting the fastest growing economy globally, based on oil production. In our desire to massage green sensibilities we banish investment and exploration of our own reserves of oil, gas and high quality coal in favour of importing our energy needs.

We have to rely on wealthier economies to fund the borrowing that keeps us afloat.

Incredibly, we even have those who hold their nose when talking about agriculture, a mainstay of our economy and unlike fossil fuel extraction, is a natural part of the carbon cycle.

Is it because we are so virtuous and morally superior or is it simply that we are politically and economically naive?

**George Williams**  
WHANGAMATA

## Wonderful people

I wish to record my admiration for Diane and Philippa Norris, who show unstinting and gentle kindness to those in distress. Our town is a better place because of them with their quiet and loving concern for others. Two wonderful people I am honoured to know.

**Brian Pittams**

# Will Hamilton is back



After a bumpy few months and a stem cell transplant, I am back. Jack Driver did a fantastic job while I was away and to be honest it was like I never left. It is great to be back.

### Unwelcome Visitors

We have had some 'friends' arrive back in town recently. You may have noticed them ripping around in their vehicles and just plain causing carnage, placing other road users in danger and to put it plainly, just being idiots. You will be happy to know that on Monday, we impounded for 28 days one of their vehicles from an address they frequent. To help with this we have star witnesses that don't tolerate this kind of behaviour and have given us a first hand account of what happened. A reminder, if you too don't want this kind of behaviour going on, pop out your phone and start recording, we would absolutely love to get a rego, hear your account of what happened and what you saw and love even more going and hooking the car for a month.

### Liquor Bans

That time of year is approaching again, time to familiarise yourselves and remind your visitors of the liquor ban dates and locations. Head to the TCDC website for maps. Remember most long weekends have a liquor ban, easy way to save getting a fine knowing these dates.

### Scams

We are still seeing a number of people getting duped out



of their hard earned coin. Particularly through facebook deals. No goods = no money - it should be that simple. Still featuring is bank accounts getting emptied of many thousands and sometimes hundreds of thousands of dollars. Sometimes because the scammer is so convincing they talked someone into giving them their two factor text code or access to their computer and so on. Same deal team, if it smells fishy it probably is.

### Intel

We love good juicy intel of crimes going on. If you know of something going on and would like to tell us about it, be sure that we have established and very secure national systems that keep you entirely anonymous. Alternatively give Crimestoppers a call, help us help you and our great little slice of paradise.

Keep safe out there.

- Sergeant Will Hamilton,  
Officer in Charge,  
Whangamata Police

Whangamata

**PRECISION**  
REAL ESTATE MREINZ



### Just Move In And Enjoy 216a The Drive, Whangamata

This beautifully presented home is just perfect for those wanting a no fuss lifestyle in Whangamata. The ultimate in low maintenance, built of brick, then rendered for a modern look, aluminium joinery, warm and cosy with a heat pump and wood burner. The layout is fantastic with 3 large bedrooms, the main with ensuite and study attached. The huge living area is open plan, with great connection to the kitchen and dining, perfect for those who love entertaining. Off the living is a magnificent large deck with a fully automated louvre system with rain sensor to enjoy the lovely ocean view and the Whangamata landscape.

**Price by Negotiation**  
**Open Home Sat/Sun 1-1:30pm**



**Phil Clark**  
Associate  
Whangamata  
021 940 041  
phil@precision.net.nz

Expect Excellence

Precision Real Estate Ltd MREINZ Licensed REA 2008

**Emma Adamson**  
Licensed Salesperson  
Whangamata  
027 277 8194  
emma@precision.net.nz





# A game for life

From Friday 3 November, to Sunday 5 November, the popular Whangamata Master Billiards and Snooker Tournament will be held at the Whangamata Club and the Whangamata RSA.

The event attracts 48 players and their supporters and will run a competitive tournament like no other. Held annually, this is the perfect time for all members of each club to come along and watch the games as they progress to the grand finale. Both clubs are open for all those interested from 11am, you don't need to be a pro, in fact here is some insight from a young woman's experience with snooker.

"If you had asked me some years back if I would play snooker for something to do I probably would have laughed. Some years later having taken it up as my sport of choice I can't see myself doing anything else!

"As a former 8 ball player who enjoyed the fast-paced game, I never contemplated approaching the bigger table because it looked too daunting and serious. Soon, I became interested, joined the local snooker club and things developed from that point. Like most new things, there were lots of challenges, lots to learn and I was aware that my capabilities were lacking in many areas. However, I persisted and I improved over

time. Joining at my local club level wasn't overwhelming, everyone was welcoming, friendly and offered support through tips on improving my stance, cueing action and playing and we had a lot of laughs. That for me was really appealing because I am ever so slightly competitive.

"Later, I was encouraged to give playing in a Masters Snooker Tournament a go. I was concerned about making a spectacle of myself, but with encouragement from local club members, I gave it a go and I liked it. What was great about it (for me) was that I got to dress up in formal gear and look the part - yes, it brought out my inner prima donna! It introduced me to a new group of people with interesting life stories, from varying backgrounds, from all over New Zealand who were friendly, supportive and competitive.

"Snooker is one of those games you can play for your whole lifetime - you don't have to retire from the game at a certain age and you get to travel around New Zealand to different venues."

**Whangamata News is proudly the Official Sponsor to this Whangamata event, we welcome players, supporters and all our locals to enjoy the tense and fun atmosphere of the event!**

- Jennie Black

# Hiding in the shadows?

Every month Enterprise Whangamata, your local business association, has a Business After Five meeting at one of the local cafés or bars.

ENTERPRISE  
WHANGAMATA



Profit for business

In the last 12 months, they have managed to arrange a wide variety of guests. From the mayor to a chocolatier. From project director of 25A to one of New Zealand's famous surfers. Long time treasurer of EW, Jeremy Mace believes ... "Our Bus After Five meetings have really boosted our membership this year. Clearly our members have enjoyed the diversity of our guests. It's amazing who's hiding in the shadows".

This month's guest, for 26 October at Craft Haus, is Tara Durrant. Tara has worked in the television industry for more than 20 years. She spent 10 years in Australia working with international production companies on shows like Masterchef, Survivor and The Voice.

In 2019, Tara and partner Alex Bradshaw began Fire Fire productions and a year later moved back to New Zealand. Using technological advances, and a fast internet connection, they decided to base themselves in Tara's hometown,



Tara Durrant.

Whangamata.

Now, just three years later, Fire Fire Productions has made waves in the New Zealand television space for their innovation and high production standards. "The fact that we have an international film company in our own backyard is so exciting. I'm looking forward to Tara's presentation", concluded Jeremy.

**Business After Five meeting:  
26 October, 5-6.30pm at  
Craft Haus. Free finger food and  
soft drink. Bar open.**

- Shaun Fay



Whangamata  
Club

Join Us AT THE **WHANGAMATA CLUB**



sky sports TAB

Whangamata Club Presents

**Brown Sugar**

the Rolling Stones experience



**SATURDAY 21ST OCTOBER**

**6:30pm TILL LATE**

Live AT THE WHANGAMATA CLUB

The Whangamata Club Presents

**Gerry Lee**

New Zealand's Premier Rock n Roll Pianist

**SUNDAY 22nd OCTOBER**



from 6:30pm

Whangamata Club

TUE 7 NOV from 2pm



**Melbourne Cup Day**

ALL RACES LIVE AND LOUD ON THE BIG SCREEN

COMPLIMENTARY GLASS OF BUBBLES FOR MEMBERS BEFORE 4PM

FASHION IN THE FIELD PRIZES Incl. BEST HAT

ASSISTED BETTING AND TAB RACE PACK EASY BETS

COMPLIMENTARY PRE AND POST RACE PLATTERS

SWEEPSTAKES FOR SALE

**OPEN DAILY FROM 11AM**

**BISTRO**

Monday - Friday from 3pm

Saturday & Sunday from 12pm

**DINNER MENU**

From 5pm daily

**RESTAURANT**

Friday - Sunday from 5.30pm

**404 PORT ROAD**

**FACEBOOK.COM/THEWHANGACLUB**

**WWW.WHANGAMATACLUB.CO.NZ**

**P. 07 865 8705**



# New Golf Classic scoring well

The Paradise Coast Golf Classic is a new three course event in the Coromandel.

Hosted by The Lakes Resort, Pauanui, Tairua GC and Whangamata GC, it's a fun way to play three of the Coromandel's finest.

"It's great to see the support we're getting" says Patrick Kerr, Chair of Enterprise Whangamata. "It's a wonderful mix of people from all over the upper north".

The director of the tournament, Josh Alderton, can't wait to see how golfers play the three different styles. "Resort v's Country Courses - different thinking - exciting stuff".

The field for the tournament is already over halfway full and their early bird price ends on 29 October.



Lakes Resort Clubhouse.

Supported by local council there is over \$4,000 worth of prizes and the handicap allowance is very generous.

"We had a quick PR tour round the courses the other day. The recover is

outstanding for all three. Come and support us if you can, we'd love to see you", adds Patrick.

It's hoped The PCGC will become a regular feature on our local golf calendar and by the looks of it so far

- it's well down the fairway.

**The Paradise Coast Golf Classic is taking place Friday, 1 December to Sunday, 3 December, 2023.**

**To enter go to: [www.whangamata.org.nz](http://www.whangamata.org.nz)**



## MD Design Ltd – Architectural Design

Additions. Alterations. New Builds.

For a free no obligation chat on your next project contact Mark Butler

M: 027 478 6606 E: [mddldesign@gmail.com](mailto:mddldesign@gmail.com)

[facebook.com/mddldesign](https://www.facebook.com/mddldesign)

FLOORINGXTRA.CO.NZ

## FLOORING TO SUIT YOUR STYLE

CARPET • VINYL • TIMBER • LAMINATE • RUGS

Phone or email us! We're measuring & laying! View samples instore!

WHANGAMATA

## FLOORING XTRA

Whangamata
| 636 Port Road
| 07 865 8562
| [whangamata@flooringxtra.co.nz](mailto:whangamata@flooringxtra.co.nz)

## PARADISE COAST GOLF Classic

### FRIDAY 1 DEC, SATURDAY 2 DEC & SUNDAY 3 DEC 2023

GROSS, NET AND STABLEFORD – TWOS

Max Men 27, Max Women 40

\$150 till 29 October

\$4,000  
worth of  
PRIZES

**WHAT HAPPENS?**

1 Dec – 60 play The Lakes-Pāuanui and 60 play Tairua

2 Dec – These 60 players' swap

3 Dec – Finals Day at Whangamata

**PRIZES**

Over \$4,000 worth of prizes

Fri-Sat daily prizes, Sun finals

**THANKS TO:** Enterprise Whangamata, TCDC, NZ Golf

**EARLY BIRD PRICE ENDS 29 OCTOBER**

Numbers limited to 120 people - ALREADY OVER HALF FULL

Book now \$150. Bank Acc: 02 1254 0008998.00 REF: PCGC

For more details and to enter go to [www.whangamata.org.nz](http://www.whangamata.org.nz)

EXHIBITION AND MEET THE ARTIST

## JOHN WILSON

VISUAL TRICKERY ARTIST

## YOU ARE INVITED

Saturday, 21 OCT 2023  
(Labour Weekend)  
10am onwards  
The Little Gallery  
427 Port Road  
Whangamata

# The Little Gallery

TAIRUA & WHANGAMATA

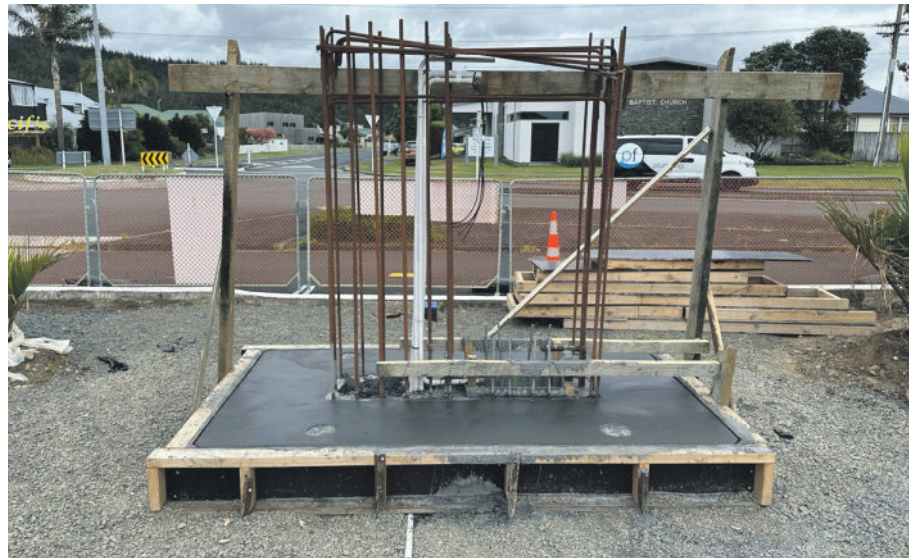
[info@thelittlegallery.co.nz](mailto:info@thelittlegallery.co.nz)



# Whangamata RSA Remembrance Wall update

This amazing project is an exciting event for both Whangamata RSA and our community. We were amazed by the response that we got, a chance to modernise and give our community a place to go to think about those who have sacrificed so much for us, to remember what we have.

The EPL team has been busy, they dismantled the existing wall,



dug out the surrounding area to make room for the new monument designed by local sculptor Ted Pickett. The reinforcing, lighting cables and water lines that will feed the fountain have been put in place

ready for the foundation for the monument.

The installation of a power cable from the RSA office out to the Wall has been completed, the concrete

foundation has been poured.

You wouldn't have noticed much difference until now as most of what has been required to do is engineering stuff, reinforcing, hidden pipes and cables, the reinforcing for the structure has been visible for a while.

When this goes to print, you will see the interesting task of erecting the wooden framing taking place - you will then appreciate the height and size of what will be achieved, what has been needed to make it stable and safe.

**We can't thank our generous sponsors enough, raising \$23k of our much needed \$25k target to create an arboretum to be proud of.**

- Geoff March, President



# WHANGAMATA

# RSA

**OPEN 6 DAYS Tuesdays to Sundays from 11am**

**Live shows & entertainment | Families welcome! | Anyone can join, come see us today**

## LABOUR WEEKEND ENTERTAINMENT

SATURDAY 21 OCTOBER



**Pieces of Eight**  
7.00PM

SUNDAY 22 OCTOBER



**Kevin Greaves**  
4.00PM



**Come and play our  
NEW Foosball table  
game! It's a hit!**

**MELBOURNE CUP DAY**  
**Tuesday 7 November**  
**3.30pm**

## NOT A MEMBER YET?

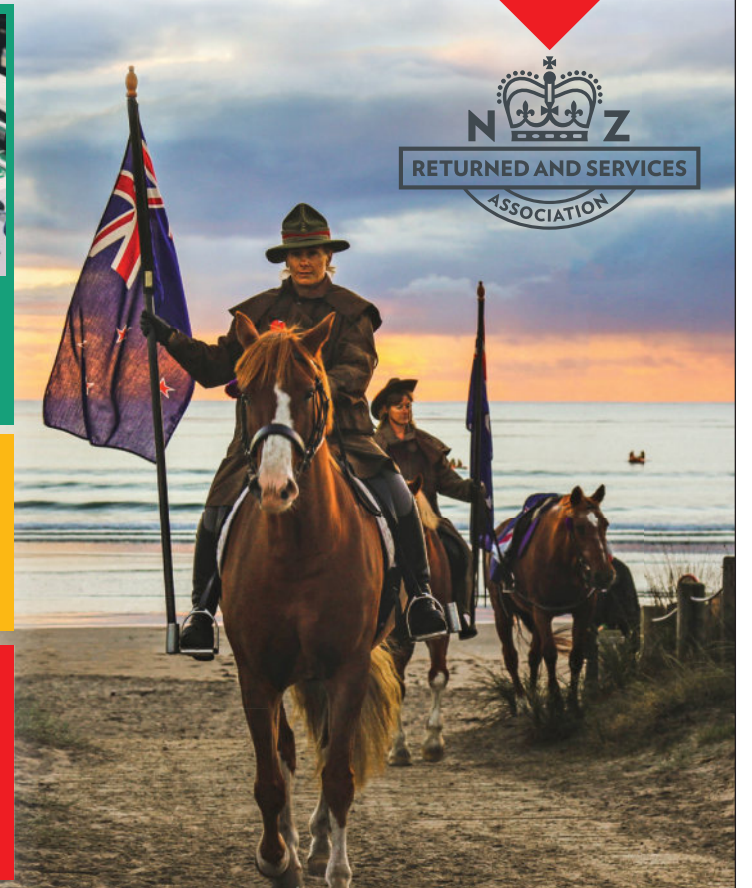
Our RSA is family friendly and encourages all members of your family to be involved. We have a FREE Kids Club and games Cornhole, Quoits and Jenga out for all to use. Our library has a range of kids' & adults' books.

**Ying's**  
@ the RSA

Thai & European Cuisine

**OPEN 6 DAYS: TUE-SUN**  
**LUNCH, DINNER & TAKEAWAYS**

Everyone welcome  
Lunches daily 11am-3pm  
Dinner from 5pm





# Onemana comes out of its shell

**There is a story about the lengths some locals will go to protect the peace, serenity, and exclusivity of their coastal mecca, Onemana. It goes something like this...**

A couple of new residents arrived on the scene and considered promoting the beauty of the beach and community, along with the many stunning walks. Their options included social media activity and a website.

The response was direct – please don't promote our village, we like it just the way it is.

This was a few years back and since that time a number of tourists guide books, media sites and travel promoters have discovered the coastal community and its offerings 8.9 kilometres north of Whangamatā, off State Highway 25.

The main magnet is the surf beach which is accessible across the vast grass and foreshore reserve which also provides views north to Slipper and the Aldermen Islands, and south to Mayor Island.

What is understood to be New Zealand's smallest surf club protects the beach.

The Onemana Beach Café and Dairy is at the foreshore entrance just down the road from the Onemana Pool and Spa complex.

Onemana has a small but proactive group which represents the community and stages several local activities and annual events. Even this group has adopted change transitioning from being the local ratepayer's body, to the Onemana Residents and Community Association.

Current chair of ORCA, Ruhi Pene, said the aim was to better reflect the entire community which comprises both ratepayers and residents.

As times change, just like the attitudes of its residents, the pool and spa has been impacted.

Previously owned and operated by property owners, the complex has changed to now being an incorporated society, operated by its members for its members.

The complex provides a freshwater swimming pool along with four spa pools, operating year-round being open until 10pm daily during the summer peak.

Overlooking the beach, the relatively new Onemana Surf

Club building now provides a fit for purpose facility for assisting in keeping those people safe when enjoying the beach. From the patrol room, lifeguards have a view of the entire beach while necessary equipment is stored below.

Beach Hop Friday is now part of the Onemana visitor fabric providing a spectacular venue for hundreds of visitors to park up and enjoy their vehicles along with the surrounds.

The annual Christmas week fair on the foreshore is a highlight for visitors across the entire region.

During Labour Weekend Saturday, Onemana is going to be on display with the spa and surf club being open for residents and visitors to check out. The beach café will also be open.

While visiting, a walk to either Pokohino Beach or Pakahakaha Bay could also be good for the soul.

**Come to the Open Day on Saturday, 21 October, 10am-12pm, to hear the locals tell what makes it a special place. Join in on the activities, including the local pool and spa complex, while enjoying a sausage, cuppa or hot chocolate.**



Onemana draws crowds.

## What legacy will you leave?

**Leaving a gift in your Will, no matter the size, is a contribution of extraordinary value to the generations that follow.**

**There are many ways to leave your mark on your community.**

Everything you do, such as your connections with your family/whānau and friends, your work, sporting, or community activities, all contribute to memories of you.

Another way is to leave a planned gift in your Will to ensure the ongoing provision of care for the elderly in your community.

In doing so, your kindness will live on, improving lives long after you have gone. When you support us, you become a partner in helping to improve the quality of life for the elderly in our community.

By leaving a gift in your Will to Moana House:

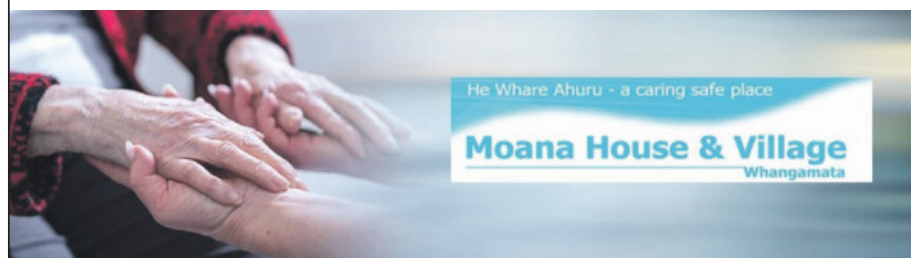
- you will change lives of the elderly for the better by ensuring those requiring supported living receive compassionate care and support.
- you will help provide a quality environment and facilities crucial to the welfare of older members of the community which helps provide the elderly with a better quality of life.

**Get more information about leaving a gift in your Will to Moana House:**

**By website – [www.moanahouse.nz](http://www.moanahouse.nz)**

**By email – [funding@moanahouse.nz](mailto:funding@moanahouse.nz)**

Use our QR code  
or visit our  
website:  
[moanahouse.nz](http://moanahouse.nz)

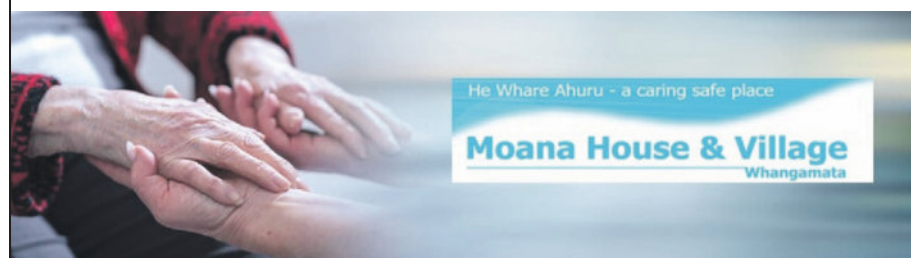


## Become a Friend of Moana House Today

There are lots of things outside of our control but one thing you can control is you can help to provide a suitable environment for those in our community who develop Dementia. We're asking people like you to become a monthly giver to support our efforts to provide a safe, homely environment for people with Dementia that is close to their loved ones. Currently there is no facility providing Dementia care on the eastern Coromandel Peninsula. Become a Friend of Moana House today and help transform lives in our community. There are so many ways you can become a Friend of Moana House ...

- Become a regular giver or make a one-off donation. All donations of \$5 or more are tax deductible.
- Partner with us. Our achievements wouldn't be possible without the invaluable support of our corporate and community partners.
- Fundraise on our behalf. You can get as creative as you like. We appreciate anything you can do to support us in our endeavours to develop a Dementia Unit. From running your own trivia quiz, charity golf day, wellbeing walks or school mufti-day to entering you and your workmates in a fun run or cycling event. There are lots of ways to lend your support.
- Leave a gift in your Will. No matter how big or small. Your bequest will be a tremendous help to future generations who will benefit from our efforts in providing a Dementia Unit.
- Volunteer. Our volunteers come from all walks of life, and range in age from teenagers to retirees. As a volunteer you'll be a vital part of our team, supporting the wellbeing of our elderly community.

**Find out more about the difference you can make by becoming a Friend of Moana House: [www.moanahouse.nz](http://www.moanahouse.nz) or email: [funding@moanahouse.nz](mailto:funding@moanahouse.nz)**







# OUTDOOR FURNITURE

has arrived and is in  
store **NOW!**

(upstairs in our  
showroom)



# 50% OFF

## SleepMaker® BEDS\* for Labour Weekend

\*Sale applies only to the Prestige, Nevada Deluxe & Bordeaux bed ranges.



Valid from Thursday, 19th October until 5pm Tuesday, 24th October, 2023.

# 100% WHANGAMATA

605 Port Rd, Whangamata • Phone 07 865 9458



# Arts Collective upcoming event

The Arts Collective Whangamata has approximately 70 members, many of whom are exhibiting artists who support the major event calendar of the Arts Collective. The membership is growing steadily thereby adding a variety of artwork. The Collective has a close relationship with the Area School whose students never fail to produce amazing photography and displays of their NCEA art boards throughout the year.

Art After Dark 2022 was a new event designed to bring art, music and people together, celebrating the beginning of summer and most importantly to have some fun.

An eclectic mix of artwork caters for everyone. The many 2022 sales highlighted this which is so encouraging for artists. It was exciting for attendees to buy something special for themselves or an extra special Christmas gift for family or friends.

It was so successful that Art after Dark is happening again this year on 10 November, 5-10pm, at the Whangamata Golf Club.

The diverse range of artwork includes outdoor sculptural and garden art. There will be fabulous music by local musicians, dazzle after dark attire, delicious food and beverages. What a great night it's going to be.

Gather your friends for a memorable pre-Christmas event.

Prizes for the best dressed Art after Dark theme is kindly sponsored by Collins James Accountants and during the evening there will be items auctioned and a generous hamper raffled.

Thanks to local businesses Whangamata New World, Super Liquor and the Whangamata Club. Enterprise Whangamata has kindly supported this event with generous assistance towards staging costs.

**Tickets are only \$25 and are available from the Whangamata Information Centre.**

# Open Studios – a must see

**Whangamata Arts Collective Open Studio Trail. Labour Weekend – Saturday 21 and Sunday 22 October. 10am-4pm.**

A variety of artists and guest artists in Whangamata will be opening their studios displaying a fabulous range of art work which will provide something for everyone. A great reason to hop on your bikes and head to the studios. Children are welcome.

Sue Jamieson and friends are excited to be part of this Labour Weekends' Art Trail.

Come along and meet Cherry, Cazza and Sue at **306 Hetherington Road**. You might find something special for a Christmas gift or just enjoy having a nosey!

Also available for purchase are some wonderful pieces of fibre art from Gretha Whyte.

Heather Watt and guest artists, Kea iti studio, **105 Kea Street**. Heather is a mixed media artist with both indoor and outdoor mixed media work along with outdoor corten steel sculptures. There will be a huge range of new work on display. Her studio is overflowing!!

Nikki Seales, **137 McKellar Place**. Nikki is a multi-media artist, recently focusing on claywork, sculptural garden art, florist, dried flowers and arrangements all in a lovely garden setting.

Dianna Smith will be hosting some guest artists at the Whangamata Information Centre, Port Road, along with a variety of goodies for Christmas gifts. There will also be maps of the Studio trail available at the Information Centre



The Little Gallery, situated at **427 Port Road**, has an amazing array of art from local and surrounding artists. The gallery is open all weekend 10am-3pm. Great eateries nearby, a good place to look at art before lunch.

ARTS COLLECTIVE WHANGAMATĀ PRESENTS

# ART AFTER Dark

10  
NOVEMBER  
2023

WHANGAMATĀ GOLF CLUB LOUNGE **\$25** TICKETS DRESS CODE: DAZZLE AFTER DARK

5PM-10PM PRIZES FOR BEST DRESSED LIVE MUSIC CANAPÉS WINE

PRIZES FOR BEST DRESSED PROUDLY SPONSORED BY COLLINS JAMES LTD

TICKETS AVAILABLE FROM WHANGAMATĀ INFORMATION CENTRE

## Whanga Bar & CAFE

**LABOUR WEEKEND HOURS**

**Breakfast**  
Tuesday – Monday  
8am – 11.45am

**Lunch**  
Tuesday – Monday  
12noon – 2pm

**Afternoon Sessions**  
Saturday & Sunday  
2pm – 5.30pm

Phone 07 865 6400.  
Look for us in the middle of town down an alley off the Main Street.



# Williamson Park access ready for dipping



Great news for Whangamatā beach-goers... Toes in the Water are back in action from Labour Weekend.

Whangamata Menzshed along with Gary Clarkson (Clarkson Contracting) and his grandson Hunter helped get the beach access up and running for the start of the summer season.

This enables safe, accessible entry onto our beach via the beach mats and board walk for all including wheelchairs, walkers, runners, pushchairs, and lightweight beach carts.

Gary St Clair will be there to keep the boardwalk and matting clear throughout the summer season.



This will continue to make Whangamatā Beach now a more inclusive location for all to get their Toes in the Water!

**You can book a beach wheelchair or walker at [toesinthewater.co.nz](http://toesinthewater.co.nz) Text or call 021 0885 8939.**

# Annual Spring Clean

**The Annual Spring Clean is coming soon – Sunday, 22 October (Labour weekend), 11am to 12.30pm.**

We are very pleased to be able to report that many local community groups and local businesses have expressed their support and are encouraging their members and staff to participate.

The plan is to tackle six areas which will cover most of the key places where water meets land around our beautiful town. There will be assembly points for each area as per below:

- Surf Beach - Williamson Park
- Otahu Estuary - Kotuku Road Boat Ramp
- Picnic Reserve - Beach Road.
- Moana Anu Anu Avenue - Hetherington Road - Walkway Car Park.
- Tukere Reserve - Tukere Road.
- Peninsula Shoreline - Meet at Beach Road Boat Ramp.

At each assembly point there will

be a coordinator who will do a brief safety briefing and then assign people to different areas to ensure each area is well covered. Bags will be provided and participants need only bring themselves and gloves if desired.

Afterwards, all are welcome to congregate at the Port Road central display site (next to mini golf) for a BBQ and the opportunity to view displays and exchange stories of the variety of inorganic rubbish found (there may well be a spot prize for the most unusual item found).

Also, there will be an opportunity to hear about Sustainable Coastlines, a national group dedicated to improving coastline health and who are doing a grid search for microplastics and other rubbish in front of the Surf Club on the same day.

**For further information please refer to our Facebook Page or visit us at: [www.whangamataharbourcare.com](http://www.whangamataharbourcare.com)**



**50% off.**  
Sanctuary Royal.



**50% off.**  
Sanctuary Midnight.

**UP TO 30% off.**  
Selected Sheet Sets.

**UP TO 40% off.**  
Selected Mattress Protectors.

**50% off.**  
Swisstek Elite.

**50% off.**  
Swisstek Select.



**10% off.**  
Design Mobel Vitality.

**50% off.**  
Serenity Essence.

**20% off.**  
Serenity Peace.



**Beds R us**  
Where dreams begin.

**The experts in sleep.**

**consumer**  
2022-2023  
FUTURE CHOICE  
Beds R us

Beds R Us Waihi  
94 Seddon Street  
Waihi  
07 863 8787

Beds R Us Whangamata  
419 Port Road  
Whangamata  
07 865 9027





# Whangamata Real Estate Community Pool update

Spring has sprung, and it's the time of the year where we all start looking forward to summer.

Every summer, being safe in the water is a top concern, and aside from being a great sport and excellent for fitness, learning to swim is a key life skill in a country surrounded by water.

We caught up with Monique at the Whangamata Real Estate Community Pool to chat about what learning to swim means to her.

**You run the community pool's learn-to-swim programme; tell us about it.**

Monique told us "I have always wanted to start a Swim School at the Whangamatā community pool, and in the last 18 months, the programme has gone from strength to strength. Our Pool Management Committee is determined to ensure that all local children have the opportunity to become competent in the water, and the growth of the programme is a great step towards achieving that goal."

**How many people are enrolled?**

"We are expecting between 90 and 100 children to be enrolled for Term 4, and this is in addition to the adults we have enrolled in our SwimFit Learn-to-Swim for Adults programme in conjunction with the Whangamatā Swim Club. We now have between 3 and 4 enthusiastic and fun teachers each term teaching



in the pool; many in the community will have seen Marcia, Daniel, Ella-Rose and Jana at the pool."

**What ages and abilities do you cater for?**

"Almost all! Preschoolers can participate once they can comfortably stand in the shallow water, which is generally from about four years of age. Once children can swim 100m in three strokes (freestyle, backstroke, breaststroke), they graduate to the Whangamatā Swim Club. And of course, there's no age limit for learning to swim!"

**And you've recently launched a new initiative; tell us more about that?**

"We are pleased to now be able to offer swimming lessons in Māori, with Jana taking the lead to make this happen. Making swimming lessons engaging and accessible to all is really important to us, and we're keen to do whatever we can to reduce the over-representation of Māori in our nation's drowning

statistics."

**What message do you have for people in our community who can't swim?**

"Come and talk to me! You aren't alone not being confident in the water, and it is never too late to learn. Our new SwimFit Learn-to-Swim programme for adults with Whangamatā Swim Club means there's never been a better time to start learning."

**Things are challenging for a lot of our families at the moment; are there any options for families who don't feel they can afford swimming lessons?**

"We are passionate about all children having the opportunity to learn to be competent in the water, and will be assisting a few families to ensure they can participate. We can work out payment plans, and the Community Services Trust has also funded some of our students in the past. In short, come and have a chat!"

**How did you personally come to love the water so much?**

"I have always spent a lot of time in the water from swimming lessons in my childhood, to summers at the beach here. Lifeguarding and swim-teaching was a natural progression for me when I was a teenager and I have never left."

Thanks Monique. Keep up the great work!

**Swimming lessons at the Whangamata Real Estate Community Pool: [whangapool.co.nz](http://whangapool.co.nz)**

**Whangamatā Swim Club & SwimFit Learn-to-Swim programme for adults: See Facebook, or contact [swimwhanga@gmail.com](mailto:swimwhanga@gmail.com) for details.**

**WHANGAMATA REAL ESTATE COMMUNITY POOL SUMMER HOURS**  
**9 October – 31 March**  
**Monday to Friday: 6am-6pm**  
**Saturday: 7am-6pm**  
**Sunday & Public Holidays: 11am-6pm**  
**CLOSED Christmas Day**

## HELP TO REDUCE SUMMER WATER RESTRICTIONS. GET A RAINWATER TANK NOW.



Rainwater tanks allow you to capture rain off your roof and store it for use during hot summer days where water restrictions may be in place.

**The process is simple.** Decide where you want to put your tank, talk to your local manufacturer about colour, size, cost and delivery, and check if your tank needs any Council consents.

*In some instances a building consent is not required if the tank meets the criteria under Schedule 1 exemption.*

*For example, the NZ Building Act allows tanks without a building consent as long as they:*

- Do not exceed 35,000 litres
- Are supported directly by the ground
- Are not plumbed into a house
- Meet all other legislative requirements such as district plan requirements before they need consent

Find out more at [building.govt.nz](http://building.govt.nz)



[tcdc.govt.nz/savewater](http://tcdc.govt.nz/savewater)

## CARAVAN FOR SALE

**Jayco 28 Foot 2002**



**Need room for family this summer?  
 Holiday workers need accommodation?**

**AFFORDABLE TINY HOME!**

Totally renovated, new carpet, vinyls, repainted interior, shower, toilet, double bed, oven, microwave, it really is chic! All the extras!

**WAS \$65,000 NOW \$55,000! Contact 0272 108 190.**






# All your favourite eats 2 go!


ORDER - PHONE - ONLINE - PICK UP - DELIVERY

**CRAIG'S**  
TRADITIONAL FISH & CHIPS



**WHANGAMATA**

**Fish and Chips  
Burgers and Toasties  
Fresh Fish Cabinet**

**LABOUR WEEKEND**  
Open Daily  
From 11am to 8 pm  
Port Road **Ph 865 8717** 

**KAFAL**  
INDIAN CUISINE



Dine-in, takeaway or delivery. Seating up to 70 people.  
**LUNCH COMBO \$15 for takeaway or dine-in**  
Order online: [kafalindiancuisine.co.nz](http://kafalindiancuisine.co.nz) or [menulog.co.nz](http://menulog.co.nz)  
- all menus are available on website  
Dinner open 7 days, 4pm-late • Lunch Fri to Sun, 11.30am-2pm  
800 PORT ROAD | PHONE 07 865 8870

  
**TURKISH MASTER KEBAB**



Kebabs, iskender dishes, salads, meat with fries, baklava & turkish delight, vegan & gluten free options  
**OPEN SUN-THU 10:30AM-8PM • FRI & SAT 10:30AM-8.30PM**  
PHONE 07 865 6754  
 **TURKISH MASTER KEBAB WHANGAMATA**

**Kitchenese**  
DELI & PIZZERIA



Supporting NZ makers of quality antipasti deli products  
Bespoke platter catering, nutritious salads and cabinet food  
WOOD FIRED PIZZAS  
See FB or Insta for latest menu  
021 240 1655 • Located on Hunt Road, Whangamata  
[kitchensedeli@gmail.com](mailto:kitchensedeli@gmail.com) • OPEN THUR to SUN from 3pm

**Real Fruit Ice Cream Cara Mela**



**ICE CREAM PARLOUR**  
Real fruit ice cream, crepes, sundaes, sweets & coffee. Lovely garden seating at rear of shop.  
705 PORT ROAD

  
**The Foodies Pantry**  
WHANGAMATA

**Spring has Sprung so...**  
We are excited to announce that a new and exciting range of made instore fresh salads will be available soon for you to take home.

Along with this, Our Volare Breads which are gathering a steady following with a new wave of customers plus our already converted group of Sourdough lovers is growing in variety. Don't miss out be in quick.



608 Port Road, Whangamata

**Ying's** @ the RSA **Yings @ the RSA**  
is open for **THAI CUISINE & EUROPEAN FOOD**



**OPEN 6 DAYS: TUESDAY TO SUNDAY**  
Open 11.30am to 3pm for lunch • Open 5pm to 8.30pm for dinners  
Open 5pm to late Friday & Saturday

 **NEW TO WHANGAMATĀ**  
Pizzas from **\$12**

**Chicken wings - BBQ, spicy, nuggets, tenders & chippies plus sweet desserts & drinks**

Orders online for pick up or delivery  
[pizzaplazawhangamata.booknorder.co.nz](http://pizzaplazawhangamata.booknorder.co.nz)  
or **phone 07 865 8306**  
427 Port Road, Whangamata 

  
**MEAT AT THE BEACH**

**Taking Christmas Ham Orders NOW !**  
Home Kill Orders finish at the end of October - Be Quick !  
Also taking orders for Lamb, Turkey, Duck and Pork roasts.

**601 PORT ROAD, WHANGAMATA P. 07 865 7241**  
**MON - FRI 8.30AM-5PM • SATURDAYS FROM 8.30AM**

**CHILLI COVE**  
REDEFINING INDIAN FLAVOURS



**\$20 LUNCH SPECIAL**  
OPEN 7 DAYS Mon to Wed 4pm-10pm  
Thu to Sun 11am-2pm & 4pm-10pm  
Dine in, takeaways and deliveries  
Vegan & gluten-free options available  
Visit us at [www.chillicove.co.nz](http://www.chillicove.co.nz)

Phone orders 07 865 6860 608C Port Rd, Whangamata  
Follow us on Facebook & Instagram - your feedback means a lot to us!

**Whangamatā NEWS**

By Locals, For Locals,  
About Locals!  
Home delivered.





# Keep our nests safe – dog ban in place

Walking along Whangamatā's beautiful beach, you'll often see, in Summer, brown and orange-red little birds – the lovely New Zealand Dotterel. It's a familiar bird on sandy east-coast beaches, sand spits and tidal estuaries in the northern North Island.

### Breeding & Habitat

Whangamatā's birds mainly breed on sandy beaches in monogamous pairs and vigorously defend territories against other dotterel. The nests are simple scrapes in the substrate, sometimes sparsely lined or decorated, often with a marker of driftwood or vegetation. Three eggs are laid, usually from August or September and are replaced if lost. Incubation usually takes 28-30 days.

Once the chicks hatch, they run around on the beach and feed themselves. It takes 6 to 7 weeks before the chicks can fly. During winter, groups of New Zealand dotterel, both adults and young, gather together at flocking sites.

### Conservation

Thirty years ago, a survey of the population of Northern New Zealand Dotterel estimated that there were just 600 birds left in New Zealand and since they are endemic, that means in the whole world! Since then, with many years of continuing care, it was considered by DOC (Nov. 2019) that the total population has recovered to over 2,500.



### Whangamatā's Dotterel Recovery Programme

Breeding success is usually low at unmanaged sites, but here in Whangamatā we've had, for many years, a determined group of dotterel minders.

Spokesman for the Group, Graeme Webb, says the main threats in Whangamatā are loss of eggs and chicks to predators (hedgehogs, stoats, rats and cats) and disturbance from human activities and dogs.

Dotterel nest in open areas with sparse vegetation and good all-round visibility, so the other real problem facing these birds is the restrictive areas of the beach where they are forced to nest and which are now under even more attack from sea level rise and storm

conditions. This often results in nest losses and the need to try again.

We often hear people refer to dotterel's stupidity with their choice of sites. However, when we think about predation, we should first think about ourselves! Without doubt, humans are the greatest predator.

### What now?

Graeme goes on to say: The Whangamatā dotterel population has experienced difficult breeding conditions for the past two seasons due to the extensive changes to our beach front and 2023 is looking like more of the same. The world is now clearly in the grip of climate change and our beaches are no exception.

The peak of our local breeding season is traditionally mid-October

to mid-November. Regular nesting birds will have already been in residence near the usual nesting places for some weeks and they will defend the spots where they have nested in the past. Although the beach profile may change, the dotterel seem to have a very accurate GPS system.

Significant work has been carried out along the Whangamatā beachfront to produce a change in its profile. Former sand cliffs have been removed and the dunes re-shaped. Extensive dune planting has also taken place. We have yet to find out how the Dotterel will handle these changes.



# Whangamatā Tides 2023

OCTOBER 2023				☾ New Moon: 15 <sup>th</sup>				● Full Moon: 29 <sup>th</sup>			
Date		High tide AM	Height (m)	High tide PM	Height (m)	Low tide PM	Height (m)	Low tide PM	Height (m)	Sun rise	Sun set
20	Fri	11:48	1.8	23:59	1.7	5:24	0.3	17:53	0.4	06:24	19:37
21	Sat			12:37	1.8	6:10	0.3	18:44	0.4	06:23	19:38
22	Sun	0:50	1.7	13:32	1.8	7:01	0.3	19:40	0.4	06:22	19:39
23	Mon	1:47	1.7	14:31	1.8	7:57	0.3	20:40	0.4	06:20	19:40
24	Tue	2:49	1.7	15:32	1.8	8:58	0.4	21:42	0.4	06:19	19:41
25	Wed	3:55	1.7	16:33	1.8	10:02	0.4	22:43	0.3	06:18	19:42
26	Thu	5:01	1.7	17:32	1.9	11:05	0.3	23:43	0.3	06:16	19:43
27	Fri	6:03	1.8	18:28	1.9			12:06	0.3	06:15	19:44
28	Sat	7:01	1.9	19:21	1.9	0:39	0.2	13:02	0.2	06:14	19:45
29	Sun	7:54	1.9	20:12	1.9	1:33	0.1	13:56	0.2	06:13	19:46
30	Mon	8:45	2.0	21:02	1.9	2:23	0.1	14:47	0.2	06:12	19:47
31	Tue	9:34	2.0	21:50	1.9	3:11	0.1	15:37	0.2	06:10	19:48

NOVEMBER 2023				☾ New Moon: 13 <sup>th</sup>				● Full Moon: 27 <sup>th</sup>			
Date		High tide AM	Height (m)	High tide PM	Height (m)	Low tide PM	Height (m)	Low tide PM	Height (m)	Sun rise	Sun set
1	Wed	10:21	1.9	22:37	1.8	3:58	0.1	16:25	0.3	06:09	19:49
2	Thu	11:08	1.9	23:24	1.8	4:43	0.2	17:14	0.3	06:08	19:50
3	Fri			11:55	1.8	5:29	0.2	18:03	0.4	06:07	19:51
4	Sat	0:11	1.7	12:43	1.8	6:14	0.3	18:53	0.5	06:06	19:52
5	Sun	0:58	1.6	13:32	1.7	7:01	0.4	19:43	0.5	06:05	19:53
6	Mon	1:49	1.6	14:22	1.6	7:50	0.5	20:35	0.6	06:04	19:55
7	Tue	2:42	1.5	15:14	1.6	8:42	0.5	21:28	0.6	06:03	19:56
8	Wed	3:37	1.5	16:05	1.6	9:37	0.6	22:20	0.6	06:02	19:57
9	Thu	4:33	1.5	16:54	1.6	10:32	0.6	23:10	0.5	06:01	19:58
10	Fri	5:27	1.5	17:41	1.6	11:24	0.6	23:57	0.5	06:00	19:59
11	Sat	6:17	1.6	18:27	1.7			12:13	0.5	05:59	20:00
12	Sun	7:04	1.7	19:11	1.7	0:42	0.4	12:59	0.5	05:58	20:01
13	Mon	7:49	1.7	19:55	1.7	1:26	0.3	13:44	0.4	05:57	20:02
14	Tue	8:32	1.8	20:39	1.8	2:08	0.3	14:28	0.4	05:57	20:03
15	Wed	9:15	1.8	21:23	1.8	2:51	0.2	15:14	0.4	05:56	20:04

# La madu



La madu has an exciting range of exclusive clothes, colourful resort wear and dresses. Soft cottons, linen and silk. A variety of styles to suits all sizes. Jewelry, handbags and gifts. Pop in.

**Summer Hours: Thursday to Sunday 10am to 3pm until December, then open 7 days.**

**Lincoln Road, Whangamata (next To Soul Burger)**



# Our Coromandel

News from Thames-Coromandel District Council



20 October 2023

## Road to Recovery

It's all go on road repairs this spring with great progress being made on SH25a and a good start to fixing the Tapu-Coroglen Road.

Waka Kotahi report that the first two sets of bridge steel beams (weighing around 20 tonnes each) were delivered to its Taparahi site earlier in the month. They'll be spliced together to form the base of the bridge deck for the first span. The new bridge will be three spans in total. The final two bridge beams are arriving mid October.

Work to improve SH25 at Ruamahunga, Thornton Bay, Manaia, Wharekaho-Kūaotunu culvert slip, Whirititoa Hill and Pumpkin Hill is also due to start this month.

On local roads, our Council's contractor Kelsey Construction is busy on the Tapu-Coroglen Road repairs. Please note that the road will remain closed during construction for safety reasons until its completion in December.

The view from one of the Taparahi abutments.



## HAVE YOUR SAY

Help shape our draft Significance and Engagement Policy

How do we determine what issues or decisions should have community input?



22 SEPT – 23 OCT  
tcdc.govt.nz/significance



## COMMUNITY DROP-IN SESSIONS

Our Council is holding a series of district-wide community drop-in sessions for our Long Term Plan (LTP) from 26–28 October. Elected Members and staff will be available to share more about the key issues our district is facing as we plan our facilities, services and projects for the next 10 years. They can help answer questions you have about the Plan, and how to share your feedback.

For a schedule of drop-in venues and times, visit [tcdc.govt.nz/LTP-2024-2034](https://tcdc.govt.nz/LTP-2024-2034)

## WE'RE HIRING

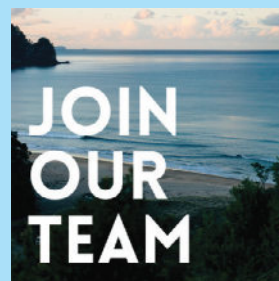
We have a range of job opportunities available. Along with a great work/life balance, we offer an array of staff benefits including flexible work arrangements, relocation allowance, free parking, sick leave on commencement of employment and more.

Job opportunities currently advertised are:

- Temp Accounts Payable Officer
- Kaitiheru – Support to the Kaihautū – Tikanga Navigation
- Economic Development Advisor
- Technical Support Officer – Information Technology
- Water Services Operations Lead
- Utilities Engineer – 3 Waters

For more information or to apply visit [tcdc.govt.nz/jobs](https://tcdc.govt.nz/jobs)

## JOIN OUR TEAM



## Whangamatā Community Board UPDATE

### A word from our Board Chair, Dave Ryan –

"Our town has been enjoying the events that come with spring, including the recent half-marathon and Street Fling, and we're looking forward to welcoming more visitors this Labour weekend. With summer coming up, please remember to reduce your speed around beaches, where families and children will be walking and cycling. Beverley Terrace is particularly busy during our peak season. Scooters will also need to take extra care on our footpaths to ensure everyone's safety."

[dave.ryan@council.tcdc.govt.nz](mailto:dave.ryan@council.tcdc.govt.nz)



The next Whangamatā Community Board meeting will take place at 10am on Tuesday 17 October at our Whangamatā Service Centre, 620 Port Road. See our website for agendas and minutes – [tcdc.govt.nz/meetings](https://tcdc.govt.nz/meetings)

## PUTTING A DAMPER ON WILDFIRE RISK



Your home and everything up to 30 meters surrounding it will determine if a fire can burn your house down. Clearing away winter debris can reduce the risk of outdoor fires spreading.

Find out more about how you can protect your home at [fireandemergency.nz](https://fireandemergency.nz)



## LABOUR WEEKEND

Some rules, regulations and schedules may change.



### Kerbside collections

Rubbish and recycling collections are one day later following Labour Day Monday 23 October. Check your local kerbside collection schedule at: [tcdc.govt.nz/bindays](https://tcdc.govt.nz/bindays) Our seven Refuse and Recycling Transfer Stations are open every day during daylight savings from 8.30am–5.30pm. [tcdc.govt.nz/rts](https://tcdc.govt.nz/rts)



### Alcohol Bans

Alcohol bans are in place over Labour weekend from 4pm Friday to 4pm Monday. [tcdc.govt.nz/alcoholcontrol](https://tcdc.govt.nz/alcoholcontrol)



### Dog Rules

Dog restrictions are in place on some beaches this Labour weekend. Look out for Council's traffic light signage or go to our website to see what rules apply in your area. [tcdc.govt.nz/dogownerguide](https://tcdc.govt.nz/dogownerguide)



### Council offices and district libraries

Closed on Monday 23 October. You can still contact us 24/7 on 07 868 0200 or email [customer.services@tcdc.govt.nz](mailto:customer.services@tcdc.govt.nz)

@ThamesCoromandelDistrictCouncil

coromandel\_tcdc

Get our free eNewsletters!  
[www.tcdc.govt.nz/subscribe](https://www.tcdc.govt.nz/subscribe)

[tcdc.govt.nz](https://tcdc.govt.nz)

[customer.services@tcdc.govt.nz](mailto:customer.services@tcdc.govt.nz)  
Private Bag, 515 Mackay St, Thames  
Phone: 07 868 0200



# Top teams meet again



**The fabulous Whangamata Twilight cricket season has started, with last season's finalists Windies and Darkside playing in round one.**

Darkside totalled a very handy 116 from their 16 overs. Not enough to trouble the Windies who hit the winning runs in the final over. JJ and Marius were there at the end to see their team through.

Looking forward to a great season.

Thanks to 'The Don' for his match report.

# Anyone can have a go

**Softball is a summer sport for all ages – let's get it going in Whanga!**

T-ball is a game for those under 9 years old and Junior Softball is for 9 to 18 years. There are adults in the Softball Premier games and also Mixed Social/Golden Oldies... something for everyone!

It's a sport Kiwis are good at playing with plenty on offer at Junior National Representative level and beyond.

Whangamatā News caught up with Lindsay Martyn, our local go-to for all things softball. He wants to get it going this summer - and make it a reality!

Lindsay told us "At junior level, kids love to throw balls, swing, bat and run. Softball refines each of those skills, especially how to get maximum speed on a ball once thrown, how to focus on hitting a



ball, and what to do when you run bases."

He also said it needs community input "Volunteers are key to making Whangamata Softball Foundation firm. Passionate volunteers would be amazing!"

Lindsay started his journey with softball with T-Ball when his son was 5 years old, volunteering to coach and never played before, his son is now 25 years old and stopped playing at 14 years.

"I found my passion and never left

Western Bay Softball Association."

**If you are interested in playing or becoming a volunteer, make yourself known to Lindsay at the upcoming "Have a Go Day" on Sundays or contact please him beforehand: Lindsay Martyn on 0274 903 451.**

**They are also seeking some funding for new gear for new teams, perhaps a reader could help the youngsters?**

- Jennie Black



**Department of Conservation**  
*Te Papa Atawhai*

## Protecting native species from introduced predators in Whenuakite

The Department of Conservation (DOC) Hauraki office is going to control rats, stoats & possums over approx. 1400 ha. This is scheduled for the next suitable weather window.

### Native wildlife and forests need protection

The Whenuakite block of Coromandel Forest Park is among the most valuable conservation sites in New Zealand. There are kiwi, Archey's frogs, kererū, kākā and many other native species living there. It has a mixture of mature coastal forest and younger regenerating trees, with stands of kauri in selected areas and pōhutukawa aligning the coast.

Local community groups, volunteers and the regional council have recognised the importance of this area and contributed to conservation efforts since 2001.

The establishment of the Whenuakite Kiwi Care Group and a sustained predator control programme for more than two decades has increased the profile and protection of native flora and fauna in this region.

### Why we are controlling introduced predators

Native species are fighting for survival due to predation from rats, stoats and possums. Without protection, we risk losing the unique natural heritage and biodiversity within Whenuakite.

Through sustained predator control using 1080, there is a big increase in breeding success for native birds, their food source is more abundant, and the forest canopy is healthier.

### Our plan to protect native species

The safest and most effective method we have to control possums, rats and stoats over large areas is to use biodegradable cereal bait pellets containing 1080. This bait targets rodents and possums. Stoats are also controlled through secondary poisoning as they feed on the carcasses of the dead rodents.

Helicopters will safely and precisely distribute bait across the forest area along pre-determined and monitored flight paths. This is the only viable method to control predators in Whenuakite due to the vast and rugged terrain.

The distribution of non-toxic pre-feed bait pellets (sandy coloured) took place on 6th October 2023. This prepares possums and rodents to eat the toxic bait (dyed green) that is applied afterwards. Both baits are about 16 mm in diameter and cylindrical shaped.

### Consultation and permissions

DOC has consulted with hapū, iwi and key stakeholders including landowners adjacent to the operational area.

DOC managers in certain positions are delegated the power of the Environmental Protection Agency to decide applications for permission to use 1080 on land administered or managed by DOC. Permission has been granted for this operation.

DOC has also received the required permission from the Ministry of Health.

DOC ensures that all legal and policy requirements are met, and that any potential risks of the operation are managed.

### Managing risk

1080 is poisonous to humans, domestic and game animals. In areas where the toxin has been applied, dogs are highly at risk until poisoned carcasses have disintegrated. This takes four-to-eight months or longer.

There will be warning signs placed at entrances to the operational area immediately prior to the operation.

Risks can be eliminated by following these rules:

- DO NOT touch bait
- WATCH children at all times
- DO NOT EAT animals from this area or within the buffer zone outside the treatment boundary. The buffer zone is 2 km for deer and pigs, 200 m for rabbits, and 1 km for hares and possums.
- Poison baits or carcasses are DEADLY to DOGS

Observe these rules whenever you see warning signs about pesticides. These signs indicate pesticide residues may be still present in baits and poisoned carcasses. When signs are removed, normal activities can resume. If in doubt, check with your local DOC office. Please report suspected vandalism or unauthorised removal of signs.

### If you suspect poisoning, please contact:

- Your local doctor of hospital OR The National Poisons Centre: 0800 764 766 (urgent calls) or 03 479 7248 OR dial 111
- Seek veterinary advice for suspected poisoning of domestic animals.

### For more information

Please contact: Operational Planner, DOC Hauraki Office, 3/366 Ngati Maru Highway (SH25), 07 867 9180, [thames@doc.govt.nz](mailto:thames@doc.govt.nz) OR EcoFX, 32 Huiputea Drive, Otorohanga 3900, (07) 873 8130, [admin@ecofx.co.nz](mailto:admin@ecofx.co.nz)

Visit the DOC website: More information about DOC's National Predator Control Programme is available on our website [www.doc.govt.nz/our-work/national-predator-control-programme](http://www.doc.govt.nz/our-work/national-predator-control-programme)



**Map of predator control area within Whenuakite**

This map shows the area we are controlling rats, stoats & possums to protect native species. You can also see operational updates and detailed maps of predator control on public conservation land on the DOC website. [www.doc.govt.nz/nature/pests-and-threats/pesticide-summaries](http://www.doc.govt.nz/nature/pests-and-threats/pesticide-summaries)



# Replacing 60 poles in Whangamata

Powerco, who owns the electricity network in Whangamatā, has contracted Northpower and we will soon be starting works to replace nearly 60 power poles at various locations in Whangamatā.

The works are being carried out to improve the safety of the electricity network and improve the reliability of the power supply to customers in the area.

It might be necessary to interrupt the electricity supply to affected properties to safely complete the work.

All affected customers will be notified and advised of the date and time of any planned outages.

It might be necessary to access affected properties to carry out safety testing checks at the meter board.

The work has now been scheduled and is expected to be completed by the end of November.

We apologise in advance for any inconvenience and thank everyone for their patience and understanding during these essential works.

**Northpower**  **POWERCO**

# Hello fashion

The Hello Friday bi-annual Fashion Parade will take place again this Labour weekend, and local business owners Paula Leen and Mandy Alexander are excited to showcase the new Spring/Summer collection on Sunday, 11am at the Pauanui Village.

The great friends embarked on their partnership and fashion journey back in 2016 which sees Hello Friday in its eighth year of business (and 15 plus Fashion Parade's). The store has a great following and is well supported by locals, holidaymakers and Coromandel Peninsula visitors – many of whom make special trips to the well known destination store.

Customers enjoy a boutique style shopping experience with the store representing around 30 clothing and footwear brands. The carefully curated range caters for a wide range of ages (from mid 20's upwards), and most shapes and sizes. The focus is predominantly on easy wear, quality, lifestyle fashion, with a small selection of special occasion wear, and a great menswear capsule. Footwear is also a large part of the business.

Hello Friday is a huge supporter of the local community which gives Mandy & Paula great satisfaction being able to give back and



support many local clubs and groups. Nationally they support the Breast Cancer Foundation of New Zealand, and are proud to be in the top three national fundraisers for their annual Pink Ribbon Breakfast fundraiser.

Watch this space for a Pink Walk event in December!

**Meanwhile, get the girlfriends together for a trip to Pauanui this Sunday for the Fashion Parade outside Hello Friday. Online 24/7 too! [www.hellofriday.nz](http://www.hellofriday.nz)**

**Eastern Coromandel COMMUNITY SERVICES**  
[www.communityservices.org.nz](http://www.communityservices.org.nz)



**Money worries weighing you down?**

Free help is here, so you can take control of your finances

- \$ Our team of qualified Financial Mentors offer free, helpful, confidential, and non-judgmental financial advice.
- \$ We will walk with you on your journey to improve the financial situation of you and your whānau.
- \$ We focus on your strengths and provide you with tools, advice and contacts to create and work a plan to help you become financially capable.

**FINANCIAL MENTORING SERVICE**



Get in touch  
we would love to hear from you

☎ 07 865 7065 / 027 470 1714

✉ [info@communityservices.org.nz](mailto:info@communityservices.org.nz)

📍 505 Port Road, Whangamata

🌐 [www.communityservices.org.nz](http://www.communityservices.org.nz)

# Fashion Parade



**LABOUR WEEKEND**  
**Sunday**  
**22 October**  
**11am**

# Hello Friday

Free Event  
 Outside the store Pauanui Village



FUNDRAISER FOR SAMOA CULTURAL TOUR



# HALLOWEEN Extravaganza Disco

FOOD - DRINKS - GLOWSTICKS - PHOTO OPPORTUNITIES

FRIDAY 27 OCTOBER

TICKET - \$5

TICKETS ON SALE AT W.A.S SCHOOL OFFICE + DOOR SALES

PRESCHOOL - Y4 4.30-6PM, Y5-8 - 6.30-8PM

ALL WELCOME - HELD AT MEMORIAL HALL

HUGE THANK YOU TO MEL METCALFE FOR HALLOWEEN STAGING AND DISPLAYS

## Beach Break is coming!

Williamson Park, Whangamatā on 5 January, 2024.

The mighty Shapeshifter returns to the beautiful Coromandel, this is a must do summer event, with Shapeshifter's shows in Coromandel being renowned each and every time as an epic night of entertainment.

Shapeshifter's music is crafted by a living, breathing band of musicians, with all the form-changing sonic possibilities live instrumentation offers. The five-strong line-up of P.Digsss (vocals), Sam Trevethick (guitar/synths/sampler), Dan McGruer (synths/sampler), Nick Robinson (bass/synths/MPC) and Darren Mathiassen (drums) have created their very own heavy soul; a stadium-sized sound which adds layers of drum & bass, jazz, funk, rock and electronica to solid bass culture foundations. Off the grid and out of this world, from the clubs to packed festival fields, Shapeshifter's transcendent sound has already seen them achieve extraordinary things. Record-breaking New Zealand tours, scene-setting appearances at festivals like Glastonbury, The Big Chill, Big Day Out and Parklife, sold-out performances across Europe, multiple music awards, four EPs and five LPs — three with platinum sales — and an army of fans who return to relive the experience time and time again.

'On Your Side' is their latest single.



It is a tune about grasping the moment, loving those around you and living in the now. Hypnotic breaks and driving bass surround a calming jazz and blues-influenced song that challenges the usual Shapeshifter flavour while still staying true to the movement and the influences that inspire and drive them to be who they are. As 'On Your Side' gently ascends into a celestial realm of drum and bass magic, it takes its place as an ethereal anthem within Shapeshifter's illustrious catalogue, perfectly timed for the arrival of summer.

Joining them on the night will be Australian psychedelic-surf rock legends Ocean Alley, festival shredders My Baby, and two of the best young acts to get you warmed again after a day in the waves in Masaya and Flaxxies.

## Curtains and Blinds and More



Whangamatā and surrounds for:

- Curtains, Sheers, and Linings | Roman Blinds
- Sun-screen, Light-filter, and Block-out Roller Blinds
- Wood and PVC Venetian Blinds
- Honeycomb Blinds | Shutters | Exterior Roller Blinds
- Motorisation and Automation options



Locally owned and operated providing a complete in-home service from consultation to installation

Contact Louize or Gavin on  
027 4777 916  
or email [info@curtainsandblinds.co.nz](mailto:info@curtainsandblinds.co.nz)  
[www.curtainsandblinds.co.nz](http://www.curtainsandblinds.co.nz)

## WE'RE BACK!



Helping young people in Whangamata to drive safely and intelligently.

Lesson appointments are now open in Whangamata each month from now and through the summer

It was great to be at school with learner licencing, now back for on road practical driving.

## Thames Driver Training

Book online at [thamesdrivertraining.co.nz](http://thamesdrivertraining.co.nz) or use the QR code

Gavin Buchanan – Thames Driver Training  
027 268 6381





# Free family festival planned for December

Mark these dates on your calendar:  
Twilight Market on 27 December,  
2pm-8pm, and Annual Craft Market  
Day on 28 December, 9am-3pm.

The Whangamata Summer Festival is planning a massive free community event just after Christmas in Williamson Park.

Festival Director Renee Meiklejohn says "We will have roving entertainers, plus a Magic Man to provide entertainment for the family in addition to the epic musicians on two stages."

This year the Twilight Market features Whangamatā band Pieces of Eight, The Marks Brothers, Uncommon State and Liminal, plus Lost Tribe Aotearoa (LTA), who are



an 8-piece family-based band from Raglan. Their sound is an eclectic mix of roots, dub, rock, ska and blues and they are well known for their high energy live shows and the contagious uplifting vibes their

music evokes. They have regular spots on the conscious festival circuit including Spirit Festival, Revive and Earthbeat Festival, as well as Sound Splash and for the first time in 2023, a spot on Homegrown's iconic mainstage.

"We love the energy and messages the band brings. The Coromandel doesn't get many free family events, where you can come for the day, browse the many stalls and slip off to have a swim", says Renee.

She hopes many of our non-resident ratepayers will take advantage of the weekend before Christmas to travel to Whangamatā for Christmas. "It will reduce pressure on the one road into town. The road will be super busy after Christmas (especially with over 120 trucks and vans attending the Festival), and the Coromandel is open and ready!

"Come spend Christmas at the bach this year, take the family to Carols

in the Park on Christmas Eve and wake up on Christmas morning at the beach!"

"We have a second stretch tent in the lake field for music and other offerings. We offer this space to any community groups wanting to highlight their organisation: perhaps a harbour care group sharing an update on their work on the dunes; or a local fundraising group running a children's programme for an hour or two with egg and spoon races, sack races, etc., to give mum and dad a chance to browse the stalls or have a quiet coffee while the kiddos are looked after.

"We are open to hearing from any group, and can tailor the time slot to their needs. We acknowledge there are so many community groups out there and want to open a space for them to showcase their work."

Email [whangasummerfestival@gmail.com](mailto:whangasummerfestival@gmail.com) for more information.



## Classic Christmas



### WHANGAMATA LIONS

# Christmas Parade

**Saturday 2nd December 2023**  
**Port Rd, Whangamata from 3pm**

**Float entries being taken now – be a part of it!**  
Registration is FREE – entry forms and rules are available from Whangamata Information Centre and Whanga Books, from Friday 17th November.

EVERYONE WELCOME! Community groups, individuals and business houses!

**After the Parade, join the festivities at Williamsons Park from 4pm**  
Bring the family and enjoy live music, markets, food stalls & games!

Brought to you by



Whangamata Real Estate

Prizes for 1st, 2nd & 3rd for top floats



## TAIRUA'S

**ovem er**

Join us from 9.00am for a **FUN Spring Festival** at Tairua Rugby Club on Cory Park Domain, Manaia Rd, Tairua.

**HEAPS OF PRIZES & GIVEAWAYS**

**ALL DAY**

**FREE ENTRY**

**Trash'n'Treasure Boot sale**  
**Food & Market stalls**  
**Music from CFM**  
**Face painting, Crazy kids hairstyles**  
**Kindy Corner playzone**  
**Special activities**  
**Adults/Kids race in Jandals**  
**Historic Walk & Talk Tour of Tairua**  
**Wearable Jandal Fashion Show**  
**'Handle the Jandal' Throwing competition**  
**& MUCH MUCH MORE....**

Proudly supported by TCDC, CFM, Tairua Business Association & its members.









# Who was Bob Scott, the All Black?

Bob Scott is one of this country's most famous All Blacks.

He was, in his day, what Damon McKenzie is today in the current All Blacks – small in stature and a brilliant fullback, scoring tries at will and kicking goals from

anywhere on the rugby field.

But, what made Bob truly famous was his unique ability to place kick a rugby ball over the goal posts from halfway with his bare feet!

Bob travelled the length and breadth of New Zealand

demonstrating this feat, which was one of his ways of giving back to the game he loved so much.

Bob retired to Whangamatā and was over the moon when a golden oldies rugby team was formed calling itself the Bob Scott Toe

Kickers in his honour, the team to this day continue in Bob's memory raising funds by playing the game he loved and giving back to the community.

**R.I.P. Robert William Henry Scott MBE.**



TUNE INTO 95.1 FM





# Toe Kickers tournament – a family affair

**Bob Scott's 2023 Toe kickers annual golden oldies rugby Tournament was held at the Whangamata Rugby grounds on Saturday, 7 October.**

Rugby was the winner on the day, but actually, Whangamata Youth Sport are going to be the real winners.

Thirteen teams from all over the North Island joined in to make the annual event a huge success. Playing a round robin of games, in great spirit, with all games ending in a draw.

We had great weather, over 400 players and supporters, who enjoyed a full day of rugby.

Golden Oldies rugby is usually played by over 35 year old guys and gals, but Whangamatā's Tournament

is now known as a family affair, with the youngest player being a 6 year old and the oldest player this year was 77 years young.

Another speciality of the tournament is to allow multiple generations to get out on the field, allowing fathers, sons, daughters and grandchildren to all play rugby together.

The day saw Whangamata Waka Ama and Rugby League Clubs fundraising, by providing hot food all afternoon with sausage sizzle, mussel fritters and burgers feeding the large crowd in true Whangamatā style.

At the end of the day the Toe Kickers ran their annual fundraising raffle and auction, with donated memorabilia, raising over \$5000.00.

Items donated included a Jonah Lomu signed rugby ball, a rugby boot signed by All Black captains: Colin Meads and Brian Lachore, both of which were donated by Albie Hartwell and Julie Van Der Veer.

Other items auctioned included a Black Ferns Jersey signed by Co-Captain Rahui Damont and an All Black supporters shirt signed by Stephan Donald aka Beaver.

These generous donations were made because all funds raised go towards supporting youth sport here in Whangamatā. Thank you to all those that donated items.

On top of that, the Tournaments famous Fish in a Barrow raffle, that included snapper, crayfish, mussels and scallops, proved to be a huge success.

The day also gave youth rugby boys and girls a chance to help out, saying thanks for the support that they received over the last year.

A big thank you needs to go to all those who continue to support this event every year with product, service and time. To mention a few: Challenge Whangamata, Nigel Mulholland, Bubba's fish shack, Dave and Joyce Penny DCN Drilling, Smokey Pallet, Street Smart, MA Savage's Whānau, Kiwi Team wear, Whangamata Rugby Club and Bartley Graphics.

**Lastly, a big thank you to the thirteen rugby teams who travelled from far and wide, to enjoy a weekend in Whangamatā, who without their support, there would be no tournament. See you all next year!**



**\$1 WING WEDNESDAY**

**GRAB AS MANY OR AS FEW AS YOU WANT**

CONDITIONS APPLY - DINE-IN ONLY

Follow us on Facebook & instagram to keep up to date with all our events & deals @crafthauswhanga

**FRIDAY@ CRAFT HAUS**

**\$10 PINTS** any PROPER PINT tap beer

**\$10 PIZZAS** any house pizza

**AFTER WORK SHOUT 2.30PM TO 5.30PM**

**TAP TAKE OVER**

Sunday 22nd October, Labour Weekend, come & meet Fraser & the crew all the way from Matangi!

Check @ crafthauswhanga for more details

Bootleg Brewery was born in 2016 out of a love for beer. Come meet the crew & sample some of the best craft beer this side of the bombays!

**SLIDER SUNDAYS**

**EVERY SUNDAY**

ONLY \$2 PER SLIDER

Just like a regular burger, but cuter!

**DINE-IN ONLY** Conditions apply

Book your table phil@crafthauswhanga.co.nz

**CRAFT HAUS**

Gastropub Est. 2022

**711 Port Road, Whangamata**  
**@crafthauswhanga - www.crafthauswhanga.co.nz**  
**07 865 6300**



# Adventure Race results

## LOCAL RESULTS - 6 HOUR

**WNW** – 6th Place Men’s, 2500pts, 5:51:17.  
*Gareth Kretzer, Daniel Curd, Geordie Walden, Ben Firth.*

**Weekend Warriors** – 18th Place Mixed, 2330pts, 6:00:40.  
*Andy Robertson, Paul Oswald, Steve Pyatt, Claudia Holschuh.*

**Catdog** – 27th Place Mixed, 2100pts, 6:04:03.  
*Shelby Garrat, Daniel James.*

## LOCAL RESULTS - 3 HOUR

**Team Garrity** – 5th Place Mixed, 750pts, 2:10:46.  
*Sam Garrity, Mel Garrity*

**Watt’s Going On?** – 6th Place Family, 1420pts, 3:03:40.  
*Zania Watt, Millen Lloyd, Jacob Robertson, Maddox Stewart.*

**Fun Times** – 12th Place Family, 1300pts, 1:29:59.  
*Nigel Airey, Sue Airey, Charlie Marr.*

**The Possum Poachers** – 16th Place Family, 1200pts, 3:05:00.  
*Laurie Baker, Grayson Baker, Zak Woodhouse, Kylee Fleg.*



# WHANGAMATA SPORTS BAR

## NEW OWNERSHIP! NEW MENU!

**THURSDAY STEAK NIGHT**



**\$18.50 3:00-9:00PM**

200g porterhouse steak, salad & fries, choice of mushroom or pepper sauce

**FRIDAY CHICKEN WINGS**

3pm-9pm **\$18**

WITH A TAP BEER OR HOUSE WINE

TOSSED IN SPICY KOREAN CHILLI PASTE, HOUSE SLAW OR

TOSSED IN BBQ SAUCE, HOUSE SLAW

**RAY SOLOMON PLAYING LIVE**

Saturday 21 October

*RAYMOND SOLOMON*



Country Music Awards Winner  
Super talent from Dargaville  
One man band act  
Don't miss it!

**SATURDAY PORK RIBS**

WHANGAMATĀ SPORTS BAR

*Pork Ribs Saturday*

3:00-9:00PM



**\$20**

**SUNDAY ROAST**

ALL DAY **\$15**



Changes every week, served with roasted veges, yorkshire pudding & pan gravy

100 Casement Road, Whangamata. Phone 865 6915. Restaurant - Gaming - TAB



# Adventure Race pushed competitors hard

Experienced Adventure Racers lined up beside first-time competitors at the start of the annual Bivouac Whangamatā Adventure Race on 7 October. This year, teams of two, three or four adults and young people explored the stunning coastal and forested areas around Onemana, using their map-reading skills to complete three exciting stages as quickly and accurately as possible.

Adventure Racing is a team sport that involves reading a map to find a series of check-points that have been set out along the route. Typically there will be mountain-biking, trekking and orienteering stages, with a few mystery challenges to add to the excitement. Teams compete for either 3 or 6 hours, and the team that can find all the checkpoints in the fastest time wins. There are time penalties for finishing after your time has elapsed!

The race began with a quick 2km 'rogaine' (a type of orienteering) around the picturesque Onemana coast, visiting 10 checkpoints. Most teams achieved this in just over 30 minutes.

Then it was on to the mountain-bikes for a steep, challenging hill-



climb up into the pine forest and some loops around fun single-track. 6-hour teams rode right to the end of the peninsula where they had an amazing view of Ōpoutere Beach in the distance.

The final 'stage 3' trek took teams along the beautiful southern beaches, towards Whangamatā. Then they looped back, either along Peninsula Road or along the eastern edge of the Whangamatā Harbour

before heading back to Onemana and the finish line.

Five teams were able to complete the entire course, visiting every checkpoint in the time available, and many other teams missed only one or two checkpoints!

Race organiser Rod Thompson expressed his gratitude to the Onemana community and local landowners for their help and

support. He also mentioned the work of the local scout group as parking wardens and the local LandSAR. "We are very grateful to LandSAR whose safety teams were positioned at the farthest ends of the course to check that no-one was lost or hurt", he said.

The event is well supported by a number of generous sponsors, both local and from further afield; Bivouac Outdoors, Pedal & Paddle, Craft Haus, Soul Burger, Salt District Brewing, Naturally Coromandel, Hosanna Honey, Pāuanui Half Marathon, Marokopa Munter, Whangamatā Half Marathon, Pure Nutrition and Trek n Travel.

Feedback from the 400 competitors has been overwhelmingly positive. They loved the course, they pushed themselves hard, but they loved every minute of it.

**Whangamatā Adventure Race will be back in 2024 at another stunning location in the Whangamatā area.**

**This is a great fitness challenge to attempt with family, friends or workmates. You'll love it!**

– Ryan Thompson,  
Whangamata Events



**Norco Scene 3**  
Normally \$999 **SALE PRICE \$699**  
**Marlin Stinson**  
Normally \$999 **SALE PRICE \$699**



**CROC BIKES FOR HIRE**  
3 and 6 seaters  
Loads of family fun



**Electra Townie**  
Normally \$749 **SALE PRICE \$649**  
**Watt Wheels Big Horn**  
Normally \$3499 **SALE PRICE \$2499**

New owners! Jenny & Geordie, locals in Whangamata for 12 years!

Cycles, hire, sales & service • E Tours

**Pedal & Paddle**  
**700 PORT RD, WHANGAMATA**

**P. 865 8096**

[www.pedalandpaddle.co.nz](http://www.pedalandpaddle.co.nz)  
[pedalandpaddlenz@gmail.com](mailto:pedalandpaddlenz@gmail.com)

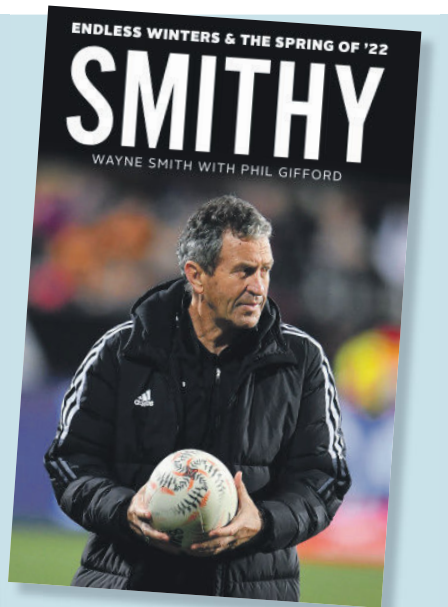


## Books

### SMITHY

WAYNE SMITH WITH  
PHIL GIFFORD

From his 1979 playing debut in a Canterbury side to the joy at Eden Park as the Black's Ferns united a nation in 2022, Wayne Smiths Story - as a Ranfurly Shield winner, All Black, multiple Super Rugby and World Cup winning coach, told in depth for the first time.

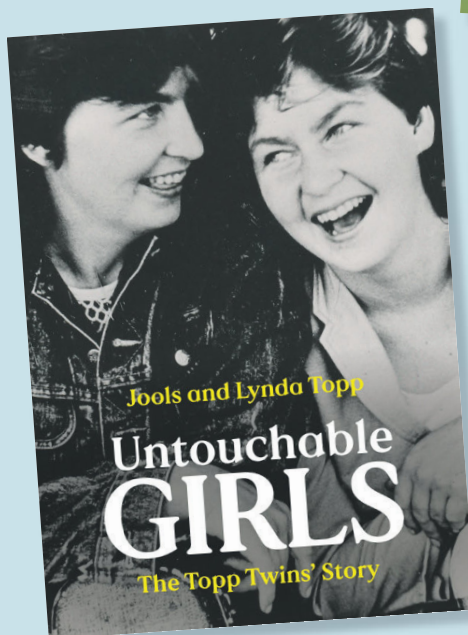


### UNTOUCHABLE GIRLS

JOOLS AND LYNDA TOPP

The incredible story of how a couple of country kids from Huntly became much-loved Kiwi icons and TV stars, with their own unique brand of original country music and comedy that has captivated audiences in New Zealand for more than 40 years.

Jools and Lynda Topp, a la the Topp Twins, tell this story in their own words, describing their adventurous lives through laugh-out-loud anecdotes and heart-warming tales.



**BOTH BOOKS ARE AVAILABLE FROM WHANGA BOOKS**

## Work still to be done



The school holidays have been and gone as have the holiday makers and visitors to our town.

One wonders what kind of impression they go away with; the **Island View Reserve carpark** and surrounds are still to be completed.

The WRA have been informed that we are waiting for the grass to grow in the plastic gobi blocks parking area. On close inspection there is not a lot of evidence that the grass is taking, however the grass outside of the carpark area is growing and could do with a mow.

The entire area is a disgrace. Plastic fencing is strewn across the berm, sand has piled up around the kerbing, the straw bales are preventing access and sprouting weeds.

Surely with the school holidays, the likelihood of visitors and freedom campers, that area could have been tidied up, the plastic fence removed, and the perimeter of the carpark mown.

Same with access six by the camp site, one of our main beach pedestrian access pathways. The lack of weeding/mowing is not a great look for our holiday visitors!

Who is managing the contractors and subcontractors and is there a maintenance programme? Hopefully we will see some action before Labour Weekend.

On a positive note, recently volunteers have been turning up in droves to support Whangamata Harbour Care with their maintenance work in the harbour. On the beach so many people happily turned up to support the Dune Care planting programme that the task was over in a few hours.

Whangamata Harbour Care has posted a flyer to local community organisations advising of a Spring Clean set down for Sunday, 22 October, encouraging volunteers to join in to clean up the harbour, shoreline, and estuaries.

- Whangamata Ratepayers Association



## Hey there, holidaymakers! How is the new council waste collection going so far? Thought so.

We understand your frustration; it doesn't have to be this way. If you're looking for a simpler waste collection service at a competitive price (without the need for bin tags), contact us for information about our Bach Bin service, designed specifically for the holiday period.

Choose between a 120-litre bin for \$151.20 + GST or a 240-litre bin for \$223.20 + GST. We'll arrange delivery, and after each service, we will place the bin back inside your boundary in case no one is home."

This weekly Bach collection offer is available in Pauanui and Whangamata on Mondays, and in Tairua and Whitianga on Tuesdays. The collection period is from December 11th to March 19th.

**You relax, we'll do the rest: 0800 424 990**  
email: [sales.support@smartenvironmental.co.nz](mailto:sales.support@smartenvironmental.co.nz)







## Whangamata 603 Rutherford Road

### As good as waterfront

When you are seeking the finer things in life, invest in this heirloom property for your family's future. Soak in the breathtaking, ever-changing, harbour views from both upstairs decks, lounge and kitchen. This magnificent home is built to last, immaculately presented and impeccably maintained making it a perfect choice for the discerning beach home buyer. Alternatively, this stunning home is a luxurious permanent residence for those who cannot keep away from beautiful Whangamata. The heart of this stunning home is the spacious, well-appointed, quality kitchen ready to entertain, spilling out to the open-plan living and dining which flows further to the outdoor areas for alfresco evenings.

The master bedroom also harnesses the magnificent location and allows private space with a luxurious ensuite should the home be full of family and friends. With four bedrooms, three bathrooms and a second living area downstairs which easily doubles as a fifth bedroom, this home revolves around five-star detail and quality. Timeless finesse frames natural light and views; a promise of just how close the water is. Tiled floor garage with additional room allows even further options for accommodation or media theatre. Secure parking to easily stow the boat and motorhome and there's ample lawn space for visitors. Easy care is the key feature here. The marina around the corner and Ocean Sports Club when you prefer dining out, plus beaches, cafe's and bars a short walk away.

This outstanding property has an almost endless list of features that must be seen to be believed, even its own water bore and pump to allow ample water in summer as well as town supply.

**Take the time to view this property, seeing is believing!**

[bayleys.co.nz/2221250](http://bayleys.co.nz/2221250)

500sqm 2 4 3 2

**Price** Auction (unless sold prior)

11am Thurs, 30th November 2023

96 Ulster Street, Hamilton

**View** By appointment

**Dale Sholson** 021 636 519

[dale.sholson@bayleys.co.nz](mailto:dale.sholson@bayleys.co.nz)

**Gordon McGregor** 021 998 810

[gordon.mcgregor@bayleys.co.nz](mailto:gordon.mcgregor@bayleys.co.nz)

MG REALTY LTE, BAYLEYS, LICENSED UNDER THE REAA ACT 2008



# Harcourts Whangamata



### Beautiful in Brick

This fabulous family home must be sold! Featuring 3 bedrooms and 2 bathrooms, this property provides ample space for a growing family or those who enjoy having guests over. With 3 toilets available, convenience is at your fingertips. The property also includes a garage space for one car plus workshop, as well as two carport spaces and open parking spaces for two additional vehicles.

Situated on a generous 565 sqm land area, this house boasts a spacious building area of 209 sqm. The price guide for this property is available upon application.

Inside, you'll find a range of features that enhance the overall comfort and convenience of the home. The property comes with a range of chattels, including blinds, a burglar alarm, dishwasher, and more. With a study room available, you'll have the perfect space to work or study from home. The hot water system is gas-powered, ensuring efficiency and reliability. Heating is provided by a heat pump, heat ducting system, ceiling fans, and a closed fire, ensuring you stay warm and cosy during the colder months. The property is well-insulated, with insulation in the ceiling and walls.

The kitchen is modern and well-equipped, making meal preparation a breeze. The separate dining area provides a dedicated space for enjoying meals with family and friends. The bathrooms/toilets feature separate showers and an ensuite for added convenience. The lounge is separate, offering a comfortable space to relax and unwind. The interior condition of the property is excellent, ensuring a move-in ready experience. Externally, the property showcases a brick/masonry exterior in excellent condition. The decking/patio area is perfect for outdoor entertainment and BBQs. The roof is made of coloured steel, ensuring durability and longevity. The flooring consists of carpet and tiles, providing a mix of comfort and practicality. The property is fully fenced, offering privacy and security. The aspect of the property is northerly, allowing for plenty of natural light. Backing onto a reserve there's space to walk the dog or kids to play.

Additional features include a security system, smoke detectors, a waste disposal unit, and a rangehood. The property is connected to mains sewage and has access to town water and a 3000 litre rain tank.

Don't miss this opportunity to buy now. Contact Chris today to arrange a viewing and secure this home for your future.

**\$1,050,000**

**Open Homes Saturday  
21st & Sunday 22nd  
October 1:00pm – 1:45pm**

**Chris Brown AREINZ**

Manager Harcourts Whangamata & Pauanui

**Paradise Coast Realty Limited**

Licensed Agent REAA 2008

**M 027 257 6602**

**W [www.whangamata.harcourts.co.nz](http://www.whangamata.harcourts.co.nz)**



## Whangamata 105b Tobie Place





## 104B AICKIN ROAD, WHANGAMATĀ

4 BED | 2 BATH

This unique property can be utilized as one large home or completely separated into two functioning cabins. Perfect for extra family and friends or holiday in the one and welcome guests to stay in the other. The front unit has a sunny open-plan kitchen, lounge, and dining. Two spacious bedrooms and room for a washer and dryer. The rear unit is perfect for a holiday stay. A serviced utility with two sizable bedrooms and a lovely lounge/dining area. The outdoor area is a real treat. Enjoy entertaining on the vast deck or take a very short stroll into town to enjoy shopping and the cafes.



## 228A CHARTWELL AVE, WHANGAMATĀ

5 BED | 2.5 BATH | 2 CAR

This property is sure to capture your heart with its great features both inside and out. Enjoy the outdoor lifestyle with a large deck, a comfortable entertainment area, and a tranquil courtyard without the maintenance of a large section. Inside, the house is well-appointed with five bedrooms and two bathrooms, including an ensuite, so there is plenty of room for a growing family or extra guests. The upper level offers lovely views of the surrounding area. So don't delay – contact us today and come and take a look at this incredible house. This could be the start of something special.

## 213A Chartwell, Whangamatā

2 BED | 1 BATH

This renovated stylish bach has loads of space for family and friends. Bring the boat, the tents, all the cars, and still have plenty of space for the kids and dogs to run around in a safe, fully fenced yard. With two bedrooms in this chicly decorated property, there are also two lined spacious cabins for extra guests.

So close to town, everything is within walking distance.





# Lindsay Turnbull

# @realty



## Your local Whangamatā Expert

I am a friendly, professional, and sincere salesperson who will go beyond any expectations you will have. I have been in real estate in Whangamata for 6 years. My ethos is, to be honest, and ethical at all times while finding you the perfect home or introducing you to the perfect buyer. My attention to detail and my enthusiasm will hopefully make me the salesperson you will no doubt want to use again.

**Great service. Competitive commission.**

Lindsay from @realty was simply amazing. She worked so hard to make our purchase come together when we thought it would all fall over. She didn't stop there; Lindsay worked above and beyond expectations through the due diligence and handover process. Straight up info we could trust. We couldn't recommend Lindsay more highly.



**Blue and Katey**

Throughout the process and successful sale Lindsay kept us fully informed on the progress and the reactions of prospective buyers by way of phone and text messages. She has been an excellent and knowledgeable person to deal with on our behalf and we have no hesitation in recommending her to any future sellers.



**Denis and Sharon**

Lindsay's successful marketing campaign with great photography and a cool video along with the @realty team proved to be the difference in selling our apartment in a very challenging and difficult market. With a limited buyer pool, Lindsay's marketing generated lots of enquiries and good attendance numbers at the open homes. We highly recommend Lindsay to successfully market, negotiate, and sell your property in Whangamata.



**Darryl and Maree**

Thank you so much for all you have done for us, we will forever be grateful. You are absolutely fabulous!! We really do appreciate you ♥



**Ram and Jill**



**2D/105 Aickin Road, Whangamatā**

**2 BED | 1 BATH | 2 CAR**



**101 Hiton Drive, Whangamatā**

**3 BED | 1 BATH | 2 CAR**

Thank you to Maree and Darryl, the vendors of 1/111 Hunt Road, for taking a chance on me with my first listing with @realty

**Lindsay Turnbull | 0274 238 093 | [lindsay.turnbull@realty.co.nz](mailto:lindsay.turnbull@realty.co.nz)**

[www.atrealty.co.nz](http://www.atrealty.co.nz) @realty limited licensed REA 2008





**Whangamata  
Real Estate**  
LICENSED REAA 2008

*Don't just dream it, live it*

## WIN A 5 NIGHT GETAWAY AT THE PENINSULA BEACHFRONT RESORT, MOOLOOLABA AUSTRALIA

Tickets on sale now and until the Whangamata Christmas Fair 2/12/2023. Come into Whangamata Real Estate office at 328 Ocean Road to enter the draw. Tickets cost \$5 each.

**All proceeds will be donated to the Whangamata Surf Life Saving Clubs - Project Transform.**



WIN 5 NIGHTS ACCOMMODATION IN  
**MOOLOOLABA**  
SUNSHINE COAST, AUSTRALIA



**Whangamata  
Real Estate**  
LICENSED REAA 2008

**ALL PROCEEDS WILL BE DONATED TO  
THE WHANGAMATA SURF LIFE SAVING  
CLUBS - PROJECT TRANSFORM**



**WHANGAMATA SLSC**  
37°20'24"S 175°07'08"E



### TERMS & CONDITIONS

- Flights are not included in the prize. The winner is responsible for all costs associated with the prize
- The Travel prize is not transferable or exchangeable and cannot be redeemed for cash
- The prize voucher is valid until 18 December 2024 and is for accommodation in low season
- Entrants must be over the age of 18 to enter
- Entry into the promotion is deemed as acceptance of its terms and conditions
- A draw will be made after 4pm on Saturday 2 December 2023 at Williamson Park (Surf Club) and the winner MUST BE PRESENT to claim the prize





**Whangamata  
Real Estate**  
LICENSED REAA 2008

*Don't just dream it, live it*



## Saint Patricks Row

4 3 2

A very sought after position. Secure one of these stunning 4 bedroom, 3 bathroom townhouses now.

Tasteful designer detail throughout. Spread out over three levels, the spacious master with ensuite and walk-in wardrobe sits on the second floor and has access to a private deck area with a great outlook and all day sun.

Outdoor entertaining options are impressive and link well to indoor spaces. Freehold title, exclusive access, these townhouses are beautifully designed for maximum privacy and comfort. This is an opportunity to secure a quality build now and settle upon completion.



**Colin Thompson**

**M** 021 723 723

colin@whangamatarealestate.co.nz

**View Listing** [whanga.co/8147](https://whanga.co/8147)



**Murray Cleland**

**M** 021 950 445

murray@whangamatarealestate.co.nz





# Whangamata Real Estate

LICENSED REAA 2008

07 865 8499

328 Ocean Road, Whangamata

whangamatarealestate.co.nz



## 104 Kiwi Road

- Located on the boundary of and overlooking Williamson Golf Course
- Single level living, double glazed joinery throughout, expansive dual covered decks
- Great indoor / outdoor connection, relaxed and modern open plan living
- Master bedroom with ensuite and walk in robe
- Entertainer's kitchen
- Separate guest or teen space
- Two bathrooms / 3 toilets, 3 x heat pumps
- Large double garage, level parking for boat or motorhome
- Freehold 809sqm site, fully fenced and gated
- Direct access to Golf Course

**To be sold by Auction 328 Ocean Road, 11am Sunday 12th November 2023 (unless sold prior)**

**View 12pm Saturday & Sunday, 21 October & 22 October**



Sharon Laurenson 027 662 3164

View Listing: [whanga.co/8251](https://whanga.co/8251)



## 225 Moana Anu Anu Avenue

- Located near grassy reserve and water's edge
- Peeps of the harbour
- Three double bedrooms plus office over two levels
- Master bedroom with ensuite and private sunny deck
- Open plan ground floor living well connected to outdoors
- Office/hobby room
- Internal access garage/workshop
- Storage shed plus additional kayak storage
- Very close to a wide grassy reserve and with easy access to the harbour
- Delightful gardens and exotic plantings

**View by appointment**



Sharon Laurenson 027 662 3164

View Listing: [whanga.co/8254](https://whanga.co/8254)



## 203B The Square

- Enjoy this sunny, low maintenance, single level three-bedroom, two bathroom home
- Open plan living is well connected to decks with a north facing aspect
- Outdoor areas are nicely framed by established plantings and easy-care gardens
- Master bedroom with ensuite
- Low maintenance grounds
- Fully fenced
- Central harbour location
- Off street parking
- Freehold 305sqm level site

**View 11am Sunday, 22 October**



Sharon Laurenson 027 662 3164

View Listing: [whanga.co/8218](https://whanga.co/8218)





# Whangamata Real Estate

LICENSED REAA 2008

07 865 8499

328 Ocean Road, Whangamata

whangamatarealestate.co.nz

## 119 Chevron Crescent

- Standing tall amongst the trees and in a bush setting, this family home welcomes you in
- Three double bedrooms over two levels
- Spacious kitchen, dining and living area
- Well connected to the outdoors
- Freehold 861sqm site

View 2pm Sunday, 22 October



Sharon Laurenson 027 662 3164

View Listing: [whanga.co/8231](https://whanga.co/8231)



PRICE BY  
NEGOTIATION

## 466A Ohui Road, Opoutere

- Direct beachfront access
- 1.9250ha in a combination of private bush, garden & lawn
- Three bedroom home, open plan kitchen and living
- Expansive north facing deck
- Sheltered outdoor entertaining area
- Separate Yurt accommodation

Viewing by appointment



Sharon Laurenson 027 662 3164

View Listing: [whanga.co/8258](https://whanga.co/8258)



PRICE BY  
NEGOTIATION

## 107 Riverview Road

- Full site freehold title - 827sqm, zoned extra density
- Generous garaging plus off-street parking
- Additional Studio/hobby room
- Designer kitchen and walk-in pantry
- 3-4 double bedrooms, 4th bedroom or second lounge

View 1pm Saturday, 21 October



Sharon Laurenson 027 662 3164

View Listing: [whanga.co/8210](https://whanga.co/8210)



\$2,200,000

## 113 Moana Anu Anu Avenue

- Located on the boundary of reserve with harbour and marina views
- Expansive decks overlooking Reserve
- Modern decor and open plan living
- 3 generous sized bedrooms
- Second lounge/media room
- Freehold large 905sqm site

View 1pm Saturday, 21 October



Sharon Laurenson 027 662 3164

View Listing: [whanga.co/8260](https://whanga.co/8260)



\$1,565,000

## 103 Estuary View

- Freehold full site 600sqm
- Elevated views from this 3 bedroom, 2 bathroom home
- Internal access double garage
- Modern kitchen, open plan living
- Excellent indoor / outdoor connection
- Delightful gardens

View 2pm Sunday, 22 October



Sharon Laurenson 027 662 3164

View Listing: [whanga.co/8204](https://whanga.co/8204)



ENQUIRIES  
OVER  
\$1,450,000





# Whangamata Real Estate

LICENSED REAA 2008

07 865 8499

328 Ocean Road, Whangamata

whangamatarealestate.co.nz



## 311A Port Road

- Sunny single level, low maintenance home
- Conveniently located near Whangamata town centre
- Two double bedrooms, open plan living, heat pump
- Private and fully fenced, established easy care gardens
- 304sqm Freehold Title

**View 11am Sunday, 22 October**



Sharon Laurenson 027 662 3164

View Listing: [whanga.co/8171](http://whanga.co/8171)



## 104A Silkwood Lane

- Three-bedroom homes in this price bracket are hard to come by
- Open plan living connects to a north facing deck
- Spacious garage with auto door
- Well fenced
- Ideal first home, rental, or a great retirement option

**View 10am Sunday, 22 October**



Sharon Laurenson 027 662 3164

View Listing: [whanga.co/8230](http://whanga.co/8230)



## Lot 1 of Lot 16 Te Pamahue Drive

- Elevated north facing site with expansive upper harbour views
- Located on the boundary of Reserve
- Close to town yet offering a semi-rural setting.
- Build amongst quality homes

**View by appointment**



Sharon Laurenson 027 662 3164

View Listing: [whanga.co/8152](http://whanga.co/8152)



## 7/106 Barbara Avenue

- One of Whangamata's most popular addresses, due to its convenient location
- Single level, lock and leave apartment
- Two double bedrooms, modern kitchen & bathroom
- Easy indoor / outdoor living, sheltered patio area and easy pool access
- Convenient Body Corp management & maintenance

**View 10am Sunday, 22 October**



Sharon Laurenson 027 662 3164

View Listing: [whanga.co/8229](http://whanga.co/8229)



## Unit 5, 106 Barbara Avenue

- Enjoy this very functional, one bedroom apartment in a fantastic location
- Refurbished throughout
- New front deck creating outdoor area
- Allocated off street parking
- Convenient Body Corp management
- Perfect weekend escape or Airbnb

**View 10am Sunday, 22 October**



Sharon Laurenson 027 662 3164

View Listing: [whanga.co/8225](http://whanga.co/8225)





07 865 8499 328 Ocean Road, Whangamata whangamatarealestate.co.nz

## 107 Pacific View Drive

- This stunning house has been fully renovated and boasts breathtaking ocean views
- The new kitchen flows seamlessly into the outdoor dining and entertainment area
- The master bedroom features a lounge/bar area with a private deck and stunning ocean views along with a walk-in wardrobe and spectacular bathroom
- Two more spacious double bedrooms, one with its own ensuite.
- The double internal access garage provides ample space for storage or parking

View 1pm Saturday 21 October or by appointment



Chris Speedy 021 747 901  
Katie Speedy 021 382 022  
chris.katie@whangamatarealestate.co.nz  
View Listing: whanga.co/8235



## 102B Hinemoa Street

- Breathtaking views of the sea, islands, and the beach
- Four bedroom, two bathroom home with double garage
- Open plan living, kitchen, dining and lounge area, all with fantastic views
- Great deck for entertaining
- Borders the lovely Island View Reserve

View 1pm Saturday 21 October and Saturday 28 October



Chris Speedy 021 747 901  
Katie Speedy 021 382 022  
chris.katie@whangamatarealestate.co.nz  
View Listing: whanga.co/8226



## 2/106 Saint Patricks Row

- Spacious and stylishly designed, this 4 bedroom home provides ample space for everyone
- The master and guest bedrooms have ensuites, with 3.5 bathrooms in total
- Designer kitchen, complete with a scullery
- The open plan living and dining space flow onto a sunny deck
- A stunning property located in a highly sought-after area

View 12pm Saturday 21 October and Saturday 28 October



Chris Speedy 021 747 901  
Katie Speedy 021 382 022  
chris.katie@whangamatarealestate.co.nz  
View Listing: whanga.co/8244



## 204 Hilton Drive

- A solid and tidy 4 bedroom home situated on a level full site
- Low-maintenance and fully-fenced backyard
- Open plan kitchen, dining, and living area with a fireplace
- Large double garage and plenty of off-street parking
- Sleepout

View 11am Saturday 21 October and Saturday 28 October



Chris Speedy 021 747 901  
Katie Speedy 021 382 022  
chris.katie@whangamatarealestate.co.nz  
View Listing: whanga.co/8248



## 114 Tirohanga Drive

- This property offers a mix of space and privacy
- Three bedrooms, 2 bathrooms, open plan living, dining and kitchen
- The outdoor entertaining area with pool sets the scene for summer
- Single garage plus a separate cabin/office
- Selection of citrus, plum and avocado trees

View 12pm Saturday 21 October or by appointment



Chris Speedy 021 747 901  
Katie Speedy 021 382 022  
chris.katie@whangamatarealestate.co.nz  
View Listing: whanga.co/8234







# Whangamata Real Estate

LICENSED REAA 2008

07 865 8499

328 Ocean Road, Whangamata

whangamatarealestate.co.nz

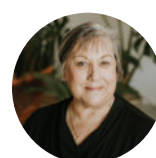


## 122 Park Avenue

- Close proximity to the Park Ave reserve
- The property boasts a 2 bedroom sleep-out, a garage with utilities plus a caravan for the extra guests
- The garage is being utilised as the living space and the deck area leading off the sleep-out provides a nice space to enjoy and relax

**Deadline Sale closes 4pm, Thursday 26 October (unless sold prior)**

**View 12.30pm Saturday 21 October and Sunday 22 October**



Nancy Millett  
021 517 708

View Listing: [whanga.co/8252](https://whanga.co/8252)



## 215 Ocean Road

- This 3 bedroom bach is just two blocks from the beach
- 812 sqm of land
- Extra density zoning offers more potential for subdivision
- Great location, big site, big opportunity
- This property deserves your attention

**View by appointment**



Chris Speedy 021 747 901  
Katie Speedy 021 382 022  
[chris.katie@whangamatarealestate.co.nz](mailto:chris.katie@whangamatarealestate.co.nz)

View Listing: [whanga.co/8259](https://whanga.co/8259)



## 131 Durrant Drive

- Family friendly 4 bedroom home with 2 bathrooms
- Modern kitchen nicely connected to the living space
- A large site with good parking & garaging options
- Great lawns and decked areas

**View 11am Saturday 21 October or by appointment**



Chris Speedy 021 747 901  
Katie Speedy 021 382 022  
[chris.katie@whangamatarealestate.co.nz](mailto:chris.katie@whangamatarealestate.co.nz)

View Listing: [whanga.co/8195](https://whanga.co/8195)



## 113 Russell Bruce Place, Onemana

- This property has been totally renovated with a new extension
- New shower room, new toilet, new kitchen, new ceilings, new carpet, new underfloor insulation, new double glazing, newly resurfaced decking the list goes on
- Very tidy three double bedroom home
- Lovely ocean views

**View by appointment**



Julian West  
027 222 4364

View Listing: [whanga.co/8240](https://whanga.co/8240)



# Whangamata Real Estate

LICENSED REAA 2008

07 865 8499 328 Ocean Road, Whangamata whangamatarealestate.co.nz

## 55 Herbert Drive

- Upper harbour views and forestry backdrop
- 3 bedrooms, north facing home
- Large living area with direct deck access
- Double garaging and carport
- Large extra parking area for vehicles & boats
- Mature landscaped grounds

View by appointment



Colin Thompson  
021 723 723

View Listing: whanga.co/8168



## 106 Tamaki Road

- Classic original 3 bedroom home
- Level contour 926m2 site
- Close proximity to school, clubs and town centre
- Options to holiday now and redevelop later.
- Secure this opportunity and arrange a viewing today

Viewing by appointment only



Colin Thompson  
021 723 723

View Listing: whanga.co/8255



## 132 Sharyn Place

- Peaceful cul-de-sac location
- Bordering harbour reserve
- Open plan living with direct deck access
- 2 double bedrooms plus sleep out in garage
- Separate garage with toilet
- 877m2 site with easy care gardens

View 11am Saturday 21 October



Colin Thompson  
021 723 723

View Listing: whanga.co/8257



## 115A Otahu Road

- Open plan living with direct deck access
- North/west aspect to capture the sun
- Three bedrooms
- Separate garage/workshop
- Low maintenance construction
- Close to school and community swimming pool

View 1pm Saturday 21 October and 11am Sunday 22 October



Colin Thompson  
021 723 723

View Listing: whanga.co/8256



## 500A Port Road

- 2 Bedroom unit with attached garage
- Corner site positioned well for the sun
- Easy walk to town centre and clubs
- Low maintenance construction
- Furniture list included in sale

View 12pm Saturday 21 October



Colin Thompson  
021 723 723

View Listing: whanga.co/8246





# CLASSIFIEDS

## PUBLIC NOTICES

**Clean fill free to take away.**  
Phone 0274 390 202

**Whangamata Lions BBQ & Book Stall**  
Harbour Care Market Port Road  
Saturday 21 October, 8am to 2pm.

### MOANA HOUSE TRUST BOARD Notice of Annual General Meeting

to be held on  
**Thursday 26 October 2023 at 6pm**  
at Moana House, 353 Tairua Road,  
Whangamata

#### Agenda

Apologies  
Minutes of Previous AGM  
Matters Arising  
Financial Report  
Review of Subscription  
Chairman's Report

All Financial Associates Welcome  
Intending Associates may pay at entry  
to the Meeting

Moana House  
Trust Board Secretary

## DEATH NOTICE

**HOLLARD, Christina Fay (Fay).**  
14/3/1942 - 05/10/2023.

Passed away peacefully on 5th October, 2023.  
Dearly loved wife of David for 62 years. Cherished  
mother of Andrew and Lisa Hollard, Michelle  
and Mark Boccock. Precious Nanna to her five  
grandchildren, Christina, Laura, Peter, Duncan,  
Aidan, and three great-grandchildren, Theodore,  
Zaidee and Remi.

Though we have heavy hearts, we find solace  
in knowing she is resting comfortably. A private  
memorial will be held in November. Our sincere  
thanks to all staff at Moana House for their loving  
support and care of Fay.

TWENTYMANS

## GARAGE SALES

### Garage Sale

**Saturday 21 October, from 7am.**  
Cnr Hetherington / Martyn Rd - Chevy Corner.  
Garage is Martyn Rd side.

Household, garden, tools, stuff - selling double up  
gear from 2 houses.

### Garage Sale

**Saturday 21 October, from 8am. 102 Tukere Drive.**  
Girls clothes and toys, baby's cot, ladies clothes,  
books, 2x dolls prams... something for everyone.

### Garage Sale

**Saturday 21 October, 8am to 1pm.**  
117 and 119 Hampton Road, Whangamatā.  
Something for everyone.

### Dale's Garage Sale

**Saturday 21 October, from 8:30am.**  
146 Tirohanga Drive, Whangamatā.

Some items for sale: Fishing & camping gear,  
wetsuits, mechanical & engineering tools, line  
trimmer, occasional furniture, plus many misc.  
articles.

### Garage Sale

**Saturday 21 October, 9am to noon.**  
Whiritoa Community Centre.

Great variety of goods from several households.  
Clothing, household goods, beach gear, toys etc.

### Shed Clearance

**Labour Saturday only, not before 9am.**  
123 Aickin Rd. 027 673 1521.

Fat tyre electric scooter, new battery. Portable  
heat pump air-con unused. Stove stainless gas  
hobbs electric oven. Bathroom vanity. Electric  
lawnmower Masport. Antique dressers good con  
suitable upcycle.

# TRADIES

## BUILDER

### Keith the Builder LBP

#### Need something done?

For maintenance, decking,  
fencing, repairs, interior  
work and all enquiries

**PHONE FOR FREE QUOTE**  
Keith phone 0272 262 039



## BUILDER

**SKF**

## RESIDENTIAL SERVICES

Qualified Builder / LBP

07 865 6555 [skfrs@xtra.co.nz](mailto:skfrs@xtra.co.nz)

## Sports results

### MAH JONG

**13 October:** We had 52 players today so all  
were playing at tables of 4. Our winners are:  
1st Colleen Belsham, 38 points  
2nd Karyn Jones, 36 points  
3rd Marlene Campbell, 34 points  
Well done to you. Our lucky number was 10  
and nobody scored 10!

### RSA 500 CLUB

**11 October:** An enjoyable day was had by  
all. The winner on the day was Linda Harris  
and Rex Osbaldson won the raffle.  
Chris Hepi won the chocolate bar.

### TABLE TENNIS

**12 October:** Roger Wolfe was our winner  
winning all 11 games played - well done  
Roger! Coming equal in second place were  
Therese Dixon and Denise Wallace. Lots of  
laughs and some great games.

Everyone welcome but please arrive no  
later than 12.50pm for play at 1pm.

## SITUATIONS VACANT

He Whare Ahuru - a caring safe place

## Moana House & Village Whangamata

### DIVERSIONAL THERAPIST

We are looking for a full-time Diversional Therapist to provide leadership  
and oversight of our resident-centred activities programme. The  
Diversional Therapist and his/her team are responsible for providing  
innovative activities that enable each resident to participate in meaningful  
activities that are appropriate for their level of ability. Our aim is that the  
activities programme enriches the lives of residents by ensuring that the  
activities meet their physical, social, intellectual and cultural needs.

If you are a qualified Diversional Therapist, we would love to hear from  
you. If you are not qualified but are energetic, have a positive demeanour  
and enjoy interacting with the older people, we will provide the necessary  
training.

Moana House is situated in Whangamata, a picturesque seaside town in  
the Coromandel. We have 27 Rest Home beds and 20 Hospital beds and  
offer a day care programme and respite. We are about to embark on a  
significant expansion plan which will allow us to provide a continuum of  
care for Whangamata and surrounding districts.

If this position interests you, please apply by emailing a covering letter  
and CV to: [office@moanahouse.nz](mailto:office@moanahouse.nz)

## GARAGE SALES



### GARAGE SALE

Norm Sayer, renowned artist and sculptor (retired)  
is having a sale of garden sculptures and oil  
paintings along with garage sale stuff - 2 kayaks,  
men and ladies LH golfclubs, fishing and diving  
gear, tiles and tiling tools, misc. tools, books, etc...

Everything at extra low prices and all prices  
negotiable. There's even a Lowry Organ free for  
the taking away.

**Saturday Labour Weekend, 132 Isabel St. 9 to 5.**



# Only the BEST TRADIES will do!

## Use Locals... For Locals... Support Locals!

### GYM

**BODY WORK GYM**  
**Whangamata**  
MULTI TRAINING STUDIO

**OPEN 24 HOURS  
7 DAYS**

Casuals Welcome  
Group Fitness  
Classes  
Super Affordable

**104 Lindsay Road (opposite skate park)**  
**Phone 07 865 6502** **FREE Wi-Fi**

### EARTHWORKS

**Blackhill**  
EARTHWORKS

- Bobcat & excavator
- Tight access work
- Site works
- Topsoiling
- Driveways
- Hole drilling
- Concrete prep
- Cartage

**Shay 021 742 966 | www.blackhillearthworks.co.nz**  
**info@blackhillearthworks.co.nz**

### IT SUPPORT

**Boot it.**

**FIBRE INTERNET**  
now available to  
order from **Boot I.T.**

We are the Coromandel's  
only local Fibre Internet  
Provider, and the ONLY  
provider that offers 7 days  
per week support.

Call us on 0800 242 266  
to find out more.

### PAINTER

**Gavin Johnson**  
**PAINTER & DECORATOR**

Interior/Exterior Painting  
Wallpapering  
Cedar Cleaning and  
Restoration Service

**0224 552 363**  
brushstrokeswhangamata@gmail.com

**BRUSH STROKES**  
PAINTERS & DECORATORS  
PH 0224 552 363 WHANGAMATA

### HIRE / SUPPLIES

**Bubba's**  
Outdoors & Hire

**321 Casement Rd,  
Whangamata**  
**OPEN 7 DAYS**

- LPG Refills • Ice • Bait • Rods • Reels
- Tackle • Chandlery • General Hire

**P. 07 865 7464**

### LANDSCAPING

**Beach Contractors**  
Landscape Supplies

**LANDSCAPING SUPPLIES:**

Bark, mulch, compost and topsoil	Sand, lime chip, river stones and pebbles	Cement, builder's mix and a range of metals
--	---	---

Delivery service available

**Whangamata Yard**  
2546 Waihi Whangamata Rd  
M. 027 261 1262

**Waihi Beach Yard**  
691 Waihi Beach Rd  
P. 07 863 5340

### CONCRETE

**BROWN MORE**  
CONSTRUCTION  
CONCRETE CONTRACTORS

Any Concrete Requirements: Slabs, driveways, patios, paths, etc  
All types of concrete - colour - finish  
Council Permits for Vehicle Crossings  
Excavation to finished product • Saw cutting & drilling

*We take pride in doing a quality job at a competitive rate*

**REX: 027 285 5489**  
P. 07 863 3364 • office@brownmoreconstruction.co.nz  
**www.brownmoreconstruction.co.nz**

### FENCING

RURAL FENCING • RESIDENTIAL FENCING  
POST AND RAIL • RETAINING WALLS  
POLE SHED BUILDINGS  
ORCHARD BUILDS & MAINTENANCE

**coastline**  
FENCING LTD

**BLAIN TEMPELMEYER 027 784 6538**  
coastlinefencing7@gmail.com

### PAINTER

**Coastline**  
Property Painters

Protecting your investment  
■ Interior ■ Exterior ■ Roofs

Communication is everything  
■ Updates & photos as your job progresses

Call Richard Upton: 0274 884 881 / [www.coastlinepropertypainters.com](http://www.coastlinepropertypainters.com)

### DOG WASH

**CoroVets**

**NEW TO  
WHANGAMATĀ!**

**DOG WASH SYSTEM IS HERE**

Shampoo, flea shampoo,  
condition, rinse & blow dry  
\$10 coins for 10 mins  
\$11 eftpos for 11 mins  
or come on in and get tokens

**215 Aickin Rd, outside the  
building frontage – 7 DAYS**

### BUILDING WASHING

**COROWASH**  
[www.corowash.co.nz](http://www.corowash.co.nz)

**COROMANDEL HOUSE &  
BUILDING WASHING**

No Mould, No Salt Pure Satisfaction

info@corowash.co.nz  
0223991130

Bronson Phillips

### CURTAINS / BLINDS

**croft design**

Specialising in:

- Curtains
- Roman Blinds
- Cushions
- Duvet Covers
- Roller Blinds
- Shutters

**306 CASEMENT ROAD, WHANGAMATA**  
M. 0274 481 957 | E. beth@croftdesign.co.nz

### CURTAINS / BLINDS

**Curtains and Blinds**  
**Whangamata**  
LOCALLY OWNED AND OPERATED

- Curtains
- Roman Blinds
- Roller Blinds
- Venetian Blinds
- Slats
- Shutters

100% Mobile Service  
We come to you  
Free Measure and Quote

**Call us on 027 4777 916**  
info@curtainsandblinds.co.nz

### BARBER

**Cuts by Sami**  
FOR ALL YOUR BARBER NEEDS

**07 865 8582 | 604 Port Rd, Whangamata**

cutsbysaminz@gmail.com

cuts by Sami cuts\_by\_sami

### PAINTER

**Gerards Painting**  
Services

**Small jobs are  
my specialty!**

PHONE:  
**021 108 5996**



# Use Only the Best Services in our Community!

## Use Locals... For Locals... Support Locals!

### ELECTRICIAN

#### GREG HENSTOCK ELECTRICIAN LTD

Registered Electrician  
One Man Band

**WHANGAMATA**  
**0272 580 366**



### HANDYMAN

#### HANDYMAN

**30 yrs experience, specialising in:**

- Bathroom, deck & building repairs
  - Gib fixing & plastering
  - Interior /exterior painting
- Please ring Rex on 021 997 428**

### BUILDING WASHING

#### HOUSE WASHING

Exterior house or commercial building wash, roof wash, fences, driveway, patios – soft-wash for best moss and lichen clean and treatment, exterior window cleaning, or general water blasting, 100m of hose so access is no problem

Prompt local service with 20 years' experience  
**Ph 0800 747 787** email [atlasgroup@xtra.co.nz](mailto:atlasgroup@xtra.co.nz)  
or dial Anton direct on **027 313 4386**

### LOCKSMITH

#### Homesafe Locksmiths & Services

ONE key to fit ALL doors!  
FREE advice on your lock requirements

Ian McAuley (Macca) Owner/Operator  
• 126A Tamaki Rd, Whangamata  
• P 021 719 495 or 07 865 7092 • E [imacca2003@yahoo.co.nz](mailto:imacca2003@yahoo.co.nz)

### CLEANING



we'll take care of it

- Carpet Cleaning
- Pest Control
- Flood & Fire Restoration
- Stain Removal
- Upholstery Cleaning



07 863 8358 or 0800 225 552

[whangamata@jae.co.nz](mailto:whangamata@jae.co.nz)



### AUTOMOTIVE & BOATS



**BOAT TRAILERS, CARS, CLASSIC & HOT RODS**

ONLY **Repco**  
STOCKIST IN TOWN!

ONLY **HONDA**  
AGENT IN TOWN!

Aickin Road, Whangamata (next to Bunnings)  
P. 865 9073 | E. [office@jcdcustoms.co.nz](mailto:office@jcdcustoms.co.nz)  
Mon-Fri from 8am

### ELECTRICAL



#### Electrical Laser

"Totally Dependable"

**AVAILABLE 24/7**

Residential | Commercial | Heat Pumps  
Fire Systems

P. 865 9309 | [whangamata@laserelectrical.co.nz](mailto:whangamata@laserelectrical.co.nz)  
NEW LOCATION: 100 Lindsay Road

### PLUMBING

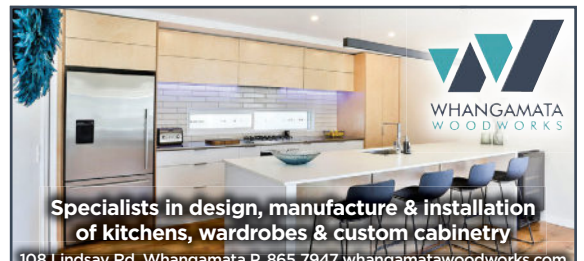


#### Plumbing Laser

- ✓ Plumbing ✓ Gas fitting
- ✓ Drainage ✓ General maintenance

**Phone 865 7151 | Whangamata**  
[whangamata@laserplumbing.co.nz](mailto:whangamata@laserplumbing.co.nz)

### KITCHEN



Specialists in design, manufacture & installation  
of kitchens, wardrobes & custom cabinetry

108 Lindsay Rd, Whangamata P. 865 7947 [whangamatawoodworks.com](http://whangamatawoodworks.com)

**MASTERCRAFT**  
KITCHENS

### BUILDER

#### MJC BUILDERS

Building with pride

- FENCING
- DECKS
- PERGOLAS
- ROOFING
- ALTERATIONS
- BUILDING REPAIRS
- CONCRETE DRIVEWAYS
- FULL LANDSCAPING



**MIKE CUNNINGHAM** M. 021 0677 555  
E. [mjc.builder.whangamata@gmail.com](mailto:mjc.builder.whangamata@gmail.com)

### TREE SPECIALIST



#### Nicholson Tree Services

**QUALIFIED ARBORIST**

30 years experience in all aspects of tree work

- Pruning
- Felling
- Storm damage
- Hedge trimming
- Confined space dismantling
- Debris chipped
- Free quotes and more

Professional and reliable service – fully insured

Phone Greg Nicholson on 07 865 6769 or 021 133 0937  
email: [nicholsontreeservices@hotmail.com](mailto:nicholsontreeservices@hotmail.com)

### PODIATRY

#### Pedicare Services

Professional Foot Care

**Alison Walkington**  
Registered Nurse

Home visits by  
appointment



**Mobile 027 663 2320 or**  
email [alison.c.walkington@gmail.com](mailto:alison.c.walkington@gmail.com)

### POOL & SPA SERVICES

#### Pool Queen LTD

MOBILE POOL & SPA CLEANING SERVICES

Sharleena Tucker ~ [poolqueen@outlook.co.nz](mailto:poolqueen@outlook.co.nz)

**027 316 3384**  
Coromandel Peninsula

### WINDOW CLEANING



Your ecofriendly window cleaning service.

Mike Horton  
[info@purenclean.co.nz](mailto:info@purenclean.co.nz)

M 021 501 324  
[www.purenclean.co.nz](http://www.purenclean.co.nz)

### HEAT PUMPS

#### Reef REFRIGERATION & AIR CONDITIONING LTD

**We Sell and Service all Major Brands**

Your heat pump specialist  
On site marine & commercial refrigeration

Call today for a hassle-free quote

**027 933 8599**

[www.reefrefrigeration.co.nz](http://www.reefrefrigeration.co.nz)



# Only the BEST TRADIES will do!

## Use Locals... For Locals... Support Locals!

### PLUMBER

**Russell CHOAT**  
**GAS & Plumbing**  
Whangamata

**FOR ALL YOUR GAS-FITTING, PLUMBING, DRAINAGE & ROOFING REQUIREMENTS**  
Registered craftsman & member of Master Plumbers

M. 0274 714 869 E. CHOATS@XTRA.CO.NZ

### ELECTRICIAN / DOG GROOMER

**Rusty Sparks**  
EVERYTHING ELECTRICAL  
Residential, Commercial, Data, Alarms  
021 800 017  
admin@rustysparks.nz

**PIMPED PUPS GROOM ROOM**  
021 850 017  
WHANGAMATA

### BINS

**Skip Bins, Wheelie Bins, Front Load Bins**  
Contact us today!  
**We can help!**

**smart environmental**

**0800 4 MY BIN - www.smartbins.co.nz**  
Proudly 100% Kiwi owned

### BOARDING KENNEL / CATTERY

**SPOT X**  
BOARDING KENNELS AND CATTERY

Quality care and facilities in a rural setting  
Office hours: 9am-12 noon and 3-5pm daily  
INSPECTION WELCOME  
Ph 07 865 8242 or 027 624 3890  
Annette Gillatt  
4km south of Whangamata on the main road

### REFRIGERATION & AIR CON

**TIDELINE REFRIGERATION**  
WHANGAMATA

\* HEAT PUMPS \* REFRIGERATION  
\* AIR CONDITIONING \* VENTILATION

SERVICING IN THE COROMANDEL AREA  
0272121994 - 0277251820  
TIDELINEREFRIGERATION@GMAIL.COM  
WWW.TIDELINEREFRIGERATION.COM

### TREE SPECIALIST

• Tree felling & pruning  
• Hedge trimming  
• Stump grinding  
• Fully insured  
• Qualified arborist

**TREECARE WHANGAMATA LTD**  
Contact Ben 021 827 355  
treecarewhangamata@gmail.com

### WARDROBES

**WAIKATO WARDROBES**

Nadine & Duncan Waterson - Servicing the Coromandel

- Custom Wardrobe Systems
- Sliding Doors
- Entertainment and Study Units
- Home Storage-Garage / Laundry

07 850 9959 / 027 4793 750 / waikatowardrobes.co.nz  
info@waikatowardrobes.co.nz

### WARDROBES

**WD WARDROBES DIRECT**

Steve Parkinson  
Central, East & South  
021 0733 100  
steve.parkinson@xtra.co.nz

ALSO SERVICING WHANGAMATA  
www.wardrobesdirect.co.nz

Showroom Unit 2, 63 Morrin Rd St John's Auckland

### LAUNDRY

**WHANGA LAUNDROMAT**

The only locally owned & operated laundromat in town!  
OPEN 24 HOURS - 7 DAYS A WEEK  
CASEMENT RD, WHANGAMATA (OPPOSITE WAITOMO FUEL)

### SCAFFOLDING

**WHANGAMATA SCAFFOLDING**

- Mobile scaffolding
- Roof edge protection
- Construction scaffold

Servicing Whangamata and surrounding areas

Please ring 022 076 0160 or email whangamatascaffolding@gmail.com  
102 Lindsay Road, Whangamata Est 2014

### TYRE & BATTERY SERVICES

**WHANGAMATA TYRE & BATTERY**

KUMHO TYRES 7

Car tyres / Wheel alignment  
4WD tyres / Tyre repair  
Wheel balance  
Small implement tyres  
Batteries - car & marine

Phone Simon 865 7698

**CHALLENGE** Cnr Port & Ocean Rd, Whangamata  
www.challenge.net.nz

### WINDOW & DOOR SERVICES

**WHANGAMATA WINDOW & DOOR SERVICES**

Bryce Hall  
M. 027 282 2057  
Ph. 865 9714

Reglaze Repairs Maintenance  
Retro Fit Double Glaze

whangamatawindowdoorservices@xtra.co.nz

### UPHOLSTERY

**WINDWOVEN UPHOLSTERY**

For all your upholstery needs  
• Home • Office • Boat • Caravan  
Available 6 days for your convenience  
Free quotes

07 865 8774  
021 066 5788

### HOME SERVICES

**YourLocal**  
NZ's Trusted Home Services

Avi@yourlocal.nz - www.yourlocal.nz - 022 534 5478

We specialise in  
• Exterior house wash, windows, driveways, patios, decks, fences & roofs - Commercial, residential, rural, new builds & painters prep - Pests treatment (fumigation)  
• Rodents & wasps - Chimney sweeping - Roof treatments

**BUSINESS FRANCHISE FOR SALE**

We cover Coromandel, Thames, Waihi, Waihi Beach, Whitianga, Whangamata

### CLOTHING

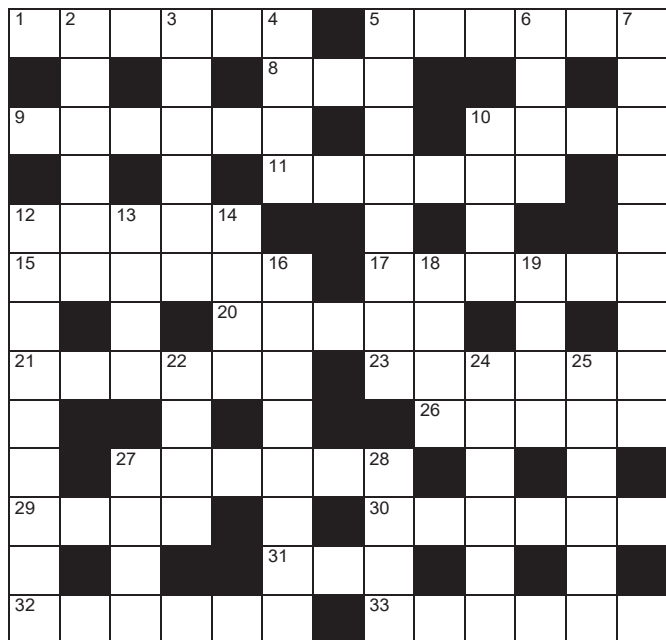
**YUKEYS**  
3620

Clothing Alterations and Repairs  
LADIES - MEN - CHILDRENSWEAR

Open Tuesday to Friday 8.30am to 1.30pm  
Saturday 9am to 12pm  
105 Aickin Road (just off Port Road)  
Whangamata  
M. 021 0289 3968



## QUICK CROSSWORD



### Across

1. Write carelessly (6)
5. Very hot and dry (6)
8. Paddle (3)
9. Performed together, in \_\_\_ (6)
10. Cat cries (4)
11. Affable (6)
12. Call on insurance (5)
15. Promiscuous woman (6)
17. Raise someone else's child (6)
20. Nerd (5)
21. Tenant (6)
23. Place of safety (6)
26. Financial return (5)
27. Nose gently (6)
29. Part of grammar (4)
30. Anzac decoration (6)
31. Fish eggs (3)
32. Carve design in relief (6)
33. Musical pattern (9)

### Down

2. Oilseed rape (6)
3. Set upon (6)
4. Yearn (4)
5. Move to another place (8)
6. Bobbin (4)
7. Troubled (9)
10. Roman Catholic service (4)
12. Dare (9)
13. Weapons (4)
14. Style (4)
16. Pincers (8)
18. Comply (4)
19. Genuine (4)
22. Stupefy (4)
24. Ostentatious clothes (6)
25. Temporary malfunction (6)
27. Unfeeling (4)
28. Water jug (4)

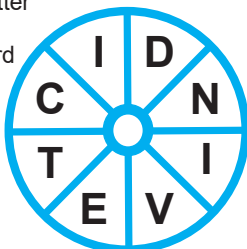
## TRIO

The same three-letter sequence will complete each of the four words

PR\_\_\_  
N\_\_\_S  
EL\_\_\_  
LA\_\_\_D

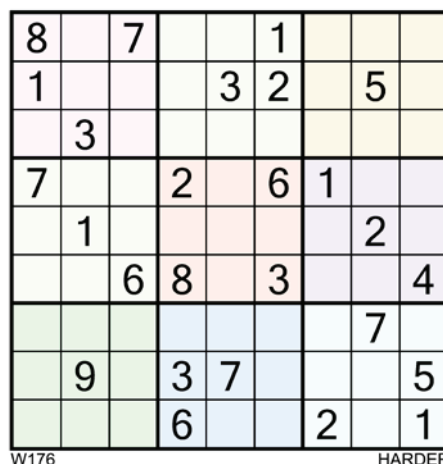
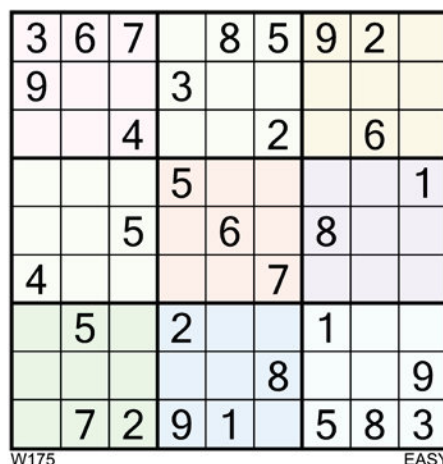
## WORDWHEEL

Add one letter to make a 9-letter word reading clockwise or anti clockwise



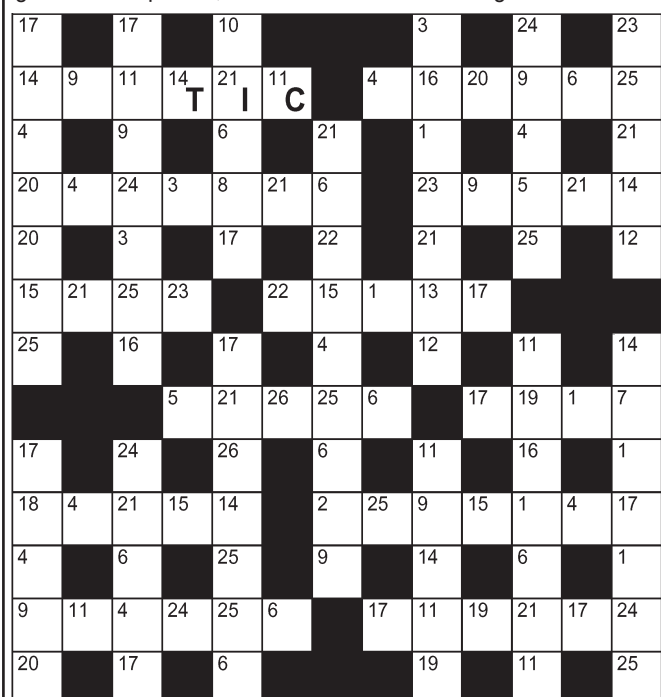
## SUDOKU

Fill the grid so every row, column and 3x3 box contains the numbers 1-9



## DECODER

Each number below represents a different letter. Find the correct letter for each number by working out the word from the letters given. To keep track, cross the letters off on the grid below.



A	B	C	D	E	F	G	H	I	J	K	L	M	N	O	P	Q	R	S	T	U	V	W	X	Y	Z
1	2	3	4	5	6	7	8	9	10	11	12	13													
													C												
14	15	16	17	18	19	20	21	22	23	24	25	26													
T								I																	

## SOLUTIONS

### CROSSWORD

Across: 1. Scrawl, 5. Torrid, 8. Oar, 9. Unison, 10. Mews, 11. Genial, 12. Claim, 15. Harlot, 17. Foster, 20. Dweeb, 21. Lessee, 23. Refuge, 26. Yield, 27. Nuzzle, 29. Noun, 30. Wreath, 31. Roe, 32. Emboss, 33. Rhythm. Down: 2. Canola, 3. Assail, 4. Long, 5. Transfer, 6. Reel, 7. Disturbed, 10. Mass, 12. Challenge, 13. Arms, 14. Mode, 16. Tweezers, 18. Obey, 19. True, 22. Stun, 24. Finery, 25. Glitch, 27. Numb, 28. Ewer.

### DECODER

14	15	16	17	18	19	20	21	22	23	24	25	26
X	E	M	D	F	I	B	H	S	R	L	T	O
13	12	11	10	9	8	7	6	5	4	3	2	1
G	Y	C	J	A	K	W	N	V	U	P	Z	

### SUDOKU

4	7	5	6	8	9	2	3	1
2	9	1	3	7	4	8	6	5
6	8	3	1	2	5	4	7	9
5	2	6	8	1	3	7	9	4
3	1	8	4	9	7	5	2	6
7	4	9	2	5	6	1	8	3
9	3	2	5	4	8	6	1	7
1	6	4	7	3	2	9	5	8
8	5	7	9	6	1	3	4	2

6	7	2	9	1	4	5	8	3
1	4	3	6	5	8	2	7	9
8	5	9	2	7	3	1	4	6
4	9	1	8	3	7	6	5	2
2	3	5	4	6	1	8	9	7
7	8	6	5	2	9	4	3	1
5	1	4	7	9	2	3	6	8
9	2	8	3	4	6	7	1	5
3	6	7	1	8	5	9	2	4

TRIO: UDE WORDWHEEL: VINDICATE

All puzzles © The Puzzle Company

## Power and performance

**R214TC** New Model,  
Husqvarna Series V-Twin  
Engine, 94cm Cutting Deck

**\$7,790**  
\$9,190 RRP

1 only at this price

**TC138T**  
Rear Catcher Model,  
Husqvarna Series  
V-Twin Engine, 38" Cut

**\$7,699**  
\$8,990 RRP

2 only at this price

**TS 138**  
Hydrostatic  
Transmission  
38" cut

**\$4,990**  
\$5,390 RRP

## Q CARD

**36 MONTHS INTEREST FREE\***

\*36 months interest free is available on Long Term Finance (LTF) for in-store and online purchases only. Min spend \$3,490. Lending criteria, \$50 annual Account Fee, fees, Ts&Cs apply. \$55 Establishment Fee applies to your first LTF transaction. \$35 Advance Fee applies to subsequent LTF transactions. Min payments of 3% of the monthly closing balance or \$10 (whichever is greater) are required throughout interest free period. Paying only the minimum monthly payments will not fully repay the loan before the end of the interest free period. Q Mastercard Expired Promotional Rate or Q Card Standard Interest Rate (both 27.99% p.a.) applies at the end of LTF Interest Free Period. (See Ts&Cs for Q Mastercard Standard Interest Rate applicable to outstanding balance of a Standard Purchase.) Rates and fees subject to change. Columbus Financial Services Limited and Consumer Finance Limited reserve the right to amend, suspend or terminate the offer and these Ts&Cs at any time without notice. Mastercard and the circles design are registered trademarks of Mastercard International Incorporated.



Shaun Prescott, Sales Manager  
021 285 4870 / 07 864 7801  
1 Hikui Settlement Road, Hikui  
[www.prescottsgarages.co.nz](http://www.prescottsgarages.co.nz)



We sell and service Husqvarna's huge range of product.  
We also demonstrate and deliver.

5 YEAR DOMESTIC WARRANTY#  
# Terms and Conditions apply, see HUSQVARNA.COM for details.

Visit [husqvarna.com](http://husqvarna.com) today

Offers valid 1/09/23 – 31/01/2024, while stocks last.