

PARADISE COAST

# Whangamatā

ISSUE 109 - 12 JANUARY, 2024

# NEWS

FREE COPY

PLEASE TAKE ONE!



## Crowds flock to Jalopy Dust-Up

P12-13

Photos by Mark James



**BY LOCALS, FOR LOCALS, ABOUT LOCALS.**



LIKE US!

**WE WELCOME YOUR CONTRIBUTIONS!**

EMAIL [WHANGAMATANews@GMAIL.COM](mailto:WHANGAMATANews@GMAIL.COM) • FACEBOOK [@WHANGANEWS](https://www.facebook.com/WHANGANEWS)

SEE ALL OUR EDITIONS LIVE AT

[WWW.WHANGAMATANews.NZ](http://WWW.WHANGAMATANews.NZ)

EDITORIAL & MEDIA SALES:

JENNIE BLACK - 021 0232 1661

**HOME DELIVERED TO WHANGAMATA**



# Welcome to the first January 2024 edition of Whangamatā News

- a magazine By Locals, For Locals, About Locals

<b>Whangamatā News</b>		<b>www.WhangamataNews.nz</b>	
<b>EDITOR &amp; SALES DIRECTOR</b> Jennie Black Phone 021 0232 1661 WhangamataNews@gmail.com		<b>PUBLISHING</b> Printed by Beacon Media Group. Published by Whangamatā News 2021 Ltd	
<b>SPORTS REPORTER &amp; PHOTOGRAPHER</b> Mark James Phone 021 668 469		All content featured in Whangamatā NEWS Limited is subject to copyright in its entirety and may not be reproduced in any form without permission from the Publisher. Any material supplied for publication is at the submitter's risk. All information is believed to be true by the Publisher at the time of printing. Views expressed in Whangamatā NEWS Limited are not necessarily those of the Publisher.	
<b>ART DIRECTOR</b> Anna Gledhill WhangamataNewsArt@gmail.com			



**For advertising queries contact Jennie Black**  
Editorial/Sales Director  
Phone 021 0232 1661  
jennieablack@gmail.com

## We welcome your letters, articles, photos, news tips and advertising enquiries

- We ask that letters and articles be no more than 250 words, although exceptions can be made.
- Photos should be high resolution and in focus.
- Include your name, no noms de plumes.

For editorial or photographic matters, phone Jennie on 021 0232 1661 or email WhangamataNews@gmail.com

# World's 1st Car & Bike Show winners

Cars were streaming into the World's 1st Car and Bike Show for 2024 at the Whangamata Club car park on New Years Day! It's the best build up to Repco Beach Hop '24 which takes place 20-24 March.

### AND THE WINNERS WERE:

- Best Ford:** Wayne Gibbens (Auckland) 1934 Ford Phaeton
- Best Gm:** Tony Jefferies (Whangamatā) 1958 Chev Nomad
- Best Mopar:** Glen Kiernan (Katikati) 1970 Plymouth Roadrunner
- Best Other:** Marie Bentham (Matamata) 1966 Fiat Bambina
- Best Hot Rod:** Paul Westwood (Hobsonville) 1934 Ford Coupe
- Best Street Machine:** Trevor Halstead (Ohaupo) 1951 Studebaker Champion
- Best Pick Up:** Kevin Watkins (Auckland) 1953 Ford 3100 Pick Up
- Best Nostalgia:** Andrew Beatson (Auckland) 1931 Ford Model A Coupe
- Whangamata Club Pick:** Paul Manning (Whangamatā) 1968 Lotus Elan Plus 2
- Best Original Bike:** Dave Mclean (Whangamatā) 1960 Velo Solex 1700
- Best Modified Bike:** Rick Welsh (Whangamatā) 2001 Harley Davidson Road King
- Best Sprocket:** Trevor Gorrie (Whangamatā) Tru-Test Mini Bike



FLOORINGXTRA.CO.NZ

## FLOORING TO SUIT YOUR STYLE

CARPET • VINYL • TIMBER • LAMINATE • RUGS

Phone or email us! We're measuring & laying! View samples instore!

**WHANGAMATA FLOORING XTRA**

Whangamata | 636 Port Road | 07 865 8562 | whangamata@flooringxtra.co.nz

## Scott Simpson MP for Coromandel

Contact me anytime  
0800 550 330 • scottsimpson.co.nz  
mpcoromandel@parliament.govt.nz  
scottsimpsonmp

**National**

Authorised by Scott Simpson, Parliament Buildings, Wellington.

### THIS WEEK @ CRAFT HAUS

**11.01.24 - 2PM-9PM**  
3SOME THURSDAY

**12.01.24 - 2-9PM**  
\$10 PINTS & PIZZAS  
2.30PM-5.30PM

**13.01.24 - 12PM-LATE**  
SEAFOOD SATURDAY

**14.01.24 12PM-9PM**  
SLIDER SUNDAY  
LIVE LOCAL MUSIC

**15.01.24 - CLOSED**  
PHIL'S BDAY!!!

Book your table now  
07 865 6300 or  
phil@crafthauswhanga.co.nz

## THREESOME THURSDAYS

EVERY THURSDAY FROM 4.30PM  
GET 2 PINTS OF TAP BEER OR GLASSES OF HOUSE WINE AND ANY PIZZA

Conditions apply **ONLY \$33**

**#threesnotacrowd**

## FRIDAY @ CRAFT HAUS

**\$10 PINTS**  
any PROPER PINT tap beer

**\$10 PIZZAS**  
any house pizza

**AFTER WORK SHOUT 2.30PM TO 5.30PM**

### THIS SUMMER'S LOCAL LIVE MUSIC

OUR HOUSE BAND MARK & TRACE WILL BE PLAYING EVERY SUNDAY FROM 5-8PM IN OUR GARDEN BAR

DON'T FORGET... **\$2 SLIDERS ALL DAY**  
BOOK YOUR TABLE!

# CRAFT HAUS

Gastropub Est. 2022

711 Port Road, Whangamata  
@crafthauswhanga - www.crafthauswhanga.co.nz  
07 865 6300



# Police Report



Another successful operation over Christmas and the New Year having previously been dominated by disorder and alcohol fueled incidents. With a zero tolerance approach to liquor ban breaches, people soon got the message, a \$250 message.

A big thank you to TCDC who have worked closely with us and provided resources. Our partners who we met with every morning to ensure we had the safest, highest functioning and most informed area.

Special thank you to Ricky and New World Whangamata who fed our hard-working staff who left their friends and families to keep everyone safe.



Thank you to our people and communities for the overwhelming support with the work we do.

Stay left and keep safe.

- Sergeant Will Hamilton, Officer in Charge, Whangamata Police

# Fire Report

The seeing in of 2024 for our brigade was abnormal with no calls at all from 30 December to 5 January.

These numbers of people in town usually result in all forms of calls being generated but the break has been welcomed. With high volumes of traffic caution is needed on our roads and also vigilance being required with pedestrians sometimes ducking out into roading systems. Some skateboards, bikes and scooters becoming high risk with disregard to others shown.

Calls for 2023 reached a record 225 with a range of incidents attended. The weather events earlier in the year and subsequent high winds later resulted in 93 calls.

Medical calls.....	44
Alarm activations.....	24
Motor vehicle incidents.....	22
Other fires.....	18
Powerlines down.....	10
Rescues/search.....	6
Structure fires.....	5
Others.....	3

We acknowledge the cooperation of our other agencies during the year and the support from the



community along with businesses who release our volunteers whenever able.

With the weather settling down our fire risk is rising daily. Currently the region is on an authorised fires by permit only. "Check before you light" website outlines all the information required.

Fireworks and lanterns are still being lit which have huge risks of starting fires. This is an offence and can result in prosecution.

Other ignition sources need to be monitored as a precaution such as mowing, grinding and welding along with being aware where vehicles are parked when hot or being operated.

Wishing you all a safe and fun-filled 2024.

- Nigel Airey, Chief Fire Officer

**Carrano Empress**  
Available in 3 colours  
\$169 \$99

**Carrano Darla**  
Also available in Black/White

Whitianga 07 866 4465 | Whangamata 07 865 8088  
WWW.TANGOSSHOES.NZ

AfterPay, Zip & Laybuy welcome.

## Victoria's Closet

Quality labelled pre-loved new & near-new clothing, shoes & handbags

AFFORDABLE PRICES

OPEN MOST DAYS from 10ish  
Ph 0274 989 360  
Port Rd, next to Whangamata Pharmacy

\$20 OFF

all clothing \$30 & over

POP UP SHOP  
626 PORT ROAD  
7 DAYS.  
9AM - LATE

ETHICALLY MADE LIFESTYLE PRODUCTS.

TURKISH TOWEL PONCHOS  
BEACH TOWELS  
MUSLIN BLANKETS  
WAFFLE BLANKETS  
HEMP HATS  
ETC.

STOKED NZ

EST. 2017  
DESIGNED IN NZ, BY DEBS

## COROMANDEL CHOCOLATE.

OUR NEW STORE IS OPEN

100 Hunt Road - beside The Chiropractor and across from Liquorland

Welcome to Coromandel Chocolate, a little family-owned business nestled in the picturesque Whangamata. We create delectable bean to bar chocolate with traditional French methods. Using exceptional Pacific-sourced cacao beans, our artisanal chocolates are crafted with love for the people of Aotearoa and beyond.

[coromandelchocolate@outlook.com](mailto:coromandelchocolate@outlook.com)  
Come in & meet Thomas & Jess! 027 353 3401





## Road Works

Many have recorded their gratitude and praise for the timely reopening of State Highway 25A. Such sentiments are certainly appropriate. The manner in which this large scale project was planned, managed and progressed should be an exemplar for major works in the future. The road closure presented an opportunity for work to be advanced rapidly in a 24/7 effort that also included other road repairs beyond the major work site.

The consenting process must have been quickly executed and all necessary material, equipment and manpower assembled with urgency. The result: a significant roading project completed ahead of time and under budget.

Compare this achievement to what we see on the roads everyday. Road work sites being reset in the morning only to be shut down and reset the following day. Traffic Management appears to have become excessive in recent times and often dwarfs the scale of the works at the site.

Surely, the SH25A experience should provide for a rethink of the way things could be done.

If viable detours are available roading worksites can be isolated to allow round the clock work to continue and the extraordinary cost of traffic management avoided.

**George Williams**  
WHANGAMATA

## Messy Christmas Sheep Trail

We have a winner for our recent competition. She is 8-year-old Isla Keogh (pictured below). Isla is enjoying spending a book token these holidays.

Thanks to all the children who entered the competition. Thanks also to the 12 retail outlets who generously supported this fun competition for young children by displaying the knitted sheep and pamphlets in your shops. To the lovely ladies from the Anglican Church who knitted the sheep thank you. Finally thanks to our Vicar Rev Rosie for her encouragement and support of our competition.

Perhaps we will have another Sheep Trail at Christmas in 2024?

**Jill** on behalf of the  
WHANGAMATA ANGLICAN CHURCH



# Pride of the Coromandel – Whangamata Lions

**The Lions Club said goodbye to a busy and eventful 2023 with the fun-filled Christmas Parade, the Christmas Tree Festival at the Memorial Hall and last but not least, our favourite book stall and sausage sizzle at the 3-day New Year market at Williamson Park on 28 December.**



The Lions Booklet 2023/2024 is out and is packed with plenty of information on things to do over the summer season. Get your copy now from the Information Centre and businesses around town.

One of our favourite activities you'll find in the booklet is a fantastic native walk. After a stroll on our beautiful beach, just over the causeway bridge by the marina, you'll find the Waireka PI native walkway. This area was very overgrown and required a lot of hard work over the past years to clear and enable planting right down to the estuary with native trees and shrubs. Lion Ian Feasey and team worked tirelessly to provide a beautiful walkway many kilometres long. You can walk the reserve to an out and back staircase ending in Brenton PI, or simply retrace your footsteps.

A piece of history for you – the track follows the original track from Waihi all those years ago. It continues across the road and follows north along the estuary. If you continue straight ahead, you will find a plaque denoting the first store in Whangamata. And if you still feel like walking, turn left and follow the harbour greenway around the estuary. You can return to the causeway at either Moana Anu Anu Ave, Tukere Dr or Durrant Dr. On the way to Durrant Dr, you will cross the bridge over the Kieke Stream - this bridge was built by the Lions quite a few years ago.

Moving into 2024, our next book stall will be held at the Anniversary Weekend Market on 29 January.

Please don't forget to follow us on our Facebook page, Whangamata Lions Club, for more information and lots of photos.

The Whangamata Lions are personified through our motto: We Serve. As members and as friends, we Lions enjoy bringing the good things to our community. If you feel like that is you, please get in touch at whangamatal@lions.org.nz.

We look forward to welcoming you.

– Kath Thornton,  
Whangamata Lions Club

## Whangamata Craft Beer & Gin Festival

**Sunday 4th February 2024  
from 12:30  
1100 Port Rd, Whangamata  
Te Titoki Reserve Marquee**

Craft Beer, Gin,  
Cider, Cocktails  
& Wine from  
Coromandel,  
Waikato, Auckland,  
Geraldine, Rotorua  
& Marlborough

**STRICTLY  
18+ EVENT**

**SPECIAL PRICE  
NOW \$25**  
until 21st January  
**SAVE \$15 per ticket**  
General access tickets  
available from  
AAATicketing.com

Dance the  
afternoon away  
with music by  
Tim Armstrong  
and his band

**Brought to you by the Whangamata Ocean Sports Club**

# La madu

La madu has an exciting range of exclusive clothes, colourful resort wear and dresses. Soft cottons, linen and silk. A variety of styles to suits all sizes. Jewelry, handbags and gifts. Pop in.

**OPEN 7 DAYS**

**www.lamadu.co.nz Lincoln Rd, Whangamata (next To Soul Burger)**



# Ratepayers want to see positive change



**Whangamata Ratepayers Association (WRA) welcomes visitors, in particular out of town ratepayers, here to enjoy what the town has to offer.**

Whangamata's demographic has not changed a great deal over the years, 50 - 60% of our community live permanently in other areas, our town is very much a holiday destination.

The permanent population, consisting of retirees, entrepreneurs, family businesses in the construction and service industries, education and health sector professionals make up most of the full-time residents.

Whangamata offers a great lifestyle to a wide range of people.

However, cost of living is an ongoing concern for many in this community, e.g. the price of housing, to buy or rent (rentals being hard to find), medical and health facilities, transport, the ever-increasing rate increases; the latter becoming a powder keg for many who live here.

We believe local councils throughout the country have lost sight as to what their core business is.

Most ratepayer associations believe



the core business of council is that of providing, fit for purpose infrastructure, maintenance and servicing of assets paid for by ratepayers.

There is widespread concern that the maintenance of ratepayer assets here in Whangamata are seriously underfunded.

WRA has grave concerns over the direction Local Government is taking.

We believe the role of local Government needs to be redefined. Central Government places too many demands on local councils who do not have the resources to provide the basic services.

#### 2024 WRA aims

- Work with relevant stakeholder groups to resolve Stormwater and Flooding issues #1 priority.

- Lobby for rates collected, to be spent in the area.
- 2024 - 2034 Long Term Plan, work with appropriate groups and organisations to achieve the best outcome for our town, keep rates to a realistic level.
- Support our Community Board to represent and act as advocate for the interests of their community.
- Lobby for the regular maintenance and servicing of new and existing infrastructure and environmental assets.
- Improve the quality of footpaths and street lighting.
- Lobby for change within Local Government NZ, engage in regular, purposeful, meaningful consultation, and transparency with council.
- In 2024, WRA is committed to

uniting the various ratepayer and resident associations on the Coromandel Peninsula to speak collectively for ratepayers and residents.

With Councils facing ever-increasing costs to deliver programmes and services, of all the stakeholder groups invited to meet council, it is the ratepayers and resident associations who should be first in line to meet face to face with elected TCDC members and staff in order to prioritise council spending.

After all it is the ratepayer who funds these decisions.

Finally, to all of you who became members of the WRA in the last financial year, we thank you and remind you the **Whangamata Ratepayers Association AGM is scheduled for Saturday 24 February in the Baptist Hall 11.00am.**

To those of you who passionately care for our town and its environs, and have yet to join WRA, we urge you to do so:

TOGETHER we can secure positive change.

**Visit our website:**  
[whangamataratepayers.org.nz](http://whangamataratepayers.org.nz) or  
**Email:** [whangaratpayers@gmail.com](mailto:whangaratpayers@gmail.com)

- Rob Boston

Whangamata Ratepayer Association

## The Southpacific Motel & Conference Centre



**Are you looking for somewhere to entertain your staff, a conference, a training day, or a family affair?**

Nestled in sub-tropical gardens, we have a purpose-built conference facility that can cater to groups of up to 25 people.

The on-site conference centre has wireless internet, data projector and screen, whiteboard and flipchart.

Equipped with tables, chairs, tea & coffee facilities, outdoor bbq area, commercial kitchen & bar area also available for use.

**UNDER NEW MANAGEMENT**

**Call Carly or KB (07) 865-9580 - or better still, pop down to check it out & say giddy as we are loving meeting locals!**

249 Port Rd, Whangamata • 07 865 9580  
[thesouthpacificnz@outlook.com](mailto:thesouthpacificnz@outlook.com) • [www.thesouthpacificmotel.co.nz](http://www.thesouthpacificmotel.co.nz)

## RSA WHANGAMATA



**OPEN 7 DAYS from 11am**  
(until the end of January)

**Live shows & entertainment**  
**Families welcome!**  
**Anyone can join, come see us today**



#### NEED TO GET OUT OF THE SUMMER HEAT?

Come in and see us, we have air conditioning and cold drinks and fun things for the whole family. Our Snooker and 8 Ball tables are available to use free of charge.



**Ying's** Thai & European Cuisine  
 @ the RSA

**OPEN 7 DAYS**  
**LUNCH, DINNER & TAKEAWAYS**

Everyone welcome  
 Lunches daily 11am-3pm  
 Dinner from 5pm

P. 07 865 9419 @whangamatarsa [www.whangamatarsa.com](http://www.whangamatarsa.com)



# Are you a boat owner?

Together, our individual actions will save our oceans.

One highlight in 2023 was hosting a hui with attendance by local ocean people of the Coromandel-Hauraki, representatives of Ngāti Hei, Ngāti Manuhiri, Katina Conomos and Biosecurity NZ at AgriSea NZ Seaweed Ltd to bring together people locally in the fight against New Zealand's worst invasive marine threat - caulerpa.

Aquarium caulerpa is a foreign seaweed that forms dense mats across the seabed, smothering native plants and disrupting the fragile marine ecosystem that sea creatures rely on.

Are you a boat owner? The movement of fragments from your anchor presents the highest risk of spread.

"Caulerpa is a massive threat to the region's rich biodiversity. We do not have the luxury of time, we must act" said Ngāti Manuhiri Trust's Chief Executive and action-oriented Nicola MacDonald.

In July, Ngāti Manuhiri Trust launched Te Wero Nui, to combat caulerpa. Contacting scientists in the US who had successfully eliminated caulerpa in California and funding their visit to Aotearoa.

The US experts told the Trust that Aotearoa has the resources to tackle this issue but lacks the national awareness of how serious the



problem is.

The Trust took Te Wero Nui on the road in August which led to us hosting a further hui locally, connecting people - divers, fishers, vessel owners, seaweed pioneers, officials, iwi leaders - who can act to help us remove the pest species.

Divers locally including Divezone Whitianga owner Darrell Bird and commercial fisher Phil Clow have been proactive, offering boats and skills to help removal and monitoring efforts.

In December the Trust began sharing informational resources, boats on the water to assist as needed, disposable bags for boaties

and fishers to handle caulerpa if it's found, and informational resources to support all users of the ocean area within which it is kaitiaki (guardian).

Pieces can get tangled in or stuck on equipment (for example, boat anchors and chains, nets, dive and fishing gear, and crayfish pots).

It can survive out of water for up to a week or more if it's in a moist location (like in an anchor locker or a bunched-up fishing net).

Before you leave any anchorage or anchor site in New Zealand waters, check your anchor, anchor chain, ropes or fishing gear for seaweed.

If you have an automatic anchor



retrieval system, still keep watch for seaweed pieces.

If you find any seaweed attached - remove it, bag or contain it securely so it can't get back into the water, and take it ashore for disposal in a rubbish bin.

If you can't do this (securely contain it so it does not get back in the ocean in a new location) - put it back into the waters it came from.

If you suspect you've seen exotic caulerpa, report it!

### How can you help?

Keep an eye out for exotic caulerpa species and report suspected sightings to us. Take a photo, if possible, and note the location.

Then either:  
**freephone 0800 80 99 66 or  
 complete the online form at  
[report.mpi.govt.nz](http://report.mpi.govt.nz)**

- Alison Smith



## Hey there, holidaymakers! How is the new council waste collection going so far? Thought so.

We understand your frustration; it doesn't have to be this way. If you're looking for a simpler waste collection service at a competitive price (without the need for bin tags), contact us for information about our Bach Bin service, designed specifically for the holiday period.

Choose between a 120-litre bin for \$151.20 + GST or a 240-litre bin for \$223.20 + GST. We'll arrange delivery, and after each service, we will place the bin back inside your boundary in case no one is home."

This weekly Bach collection offer is available in Pauanui and Whangamata on Mondays, and in Tairua and Whitianga on Tuesdays.

The collection period is from December 11th to March 19th.

**You relax, we'll do the rest: 0800 424 990**

email: [sales.support@smartenvironmental.co.nz](mailto:sales.support@smartenvironmental.co.nz)





# Application for therapeutic pool unsuccessful



Towards the end of 2023 we learned our Lottery Board application to build an indoor heated Learn to Swim/Therapeutic pool had been unsuccessful due to the extremely high number of requests for funding.

Around the same time, we learnt our application to the Meridian Decarbonisation Fund to replace the aging hot water solar panels with a PV system was also unsuccessful.

Our management committee whilst disappointed are committed to these projects and will continue to investigate and seek alternative funding streams.

We wish to thank local businesses who provided expertise, time, and encouragement in the preparation of our applications for funding, we were confident that our project applications were of the highest quality in their presentation and cost

effectiveness.

During 2023 the Whangamata Real Estate Community Swimming Pool provided aquatic activity to a wide range of participants young and old for recreation, fun, fitness, and competition.

The committee are thrilled with participation and remain excited for the future of the pool.

The pool is due for refurbishment, this will occur in 2024, a big job which will take several weeks, it includes a great deal of preparation work before painting can commence, the entire process is very much reliant on weather conditions, so timing is everything.

We will keep our patrons informed throughout the process, thank you for your continuing support.



Whangamata Club

Join Us AT THE **WHANGAMATA CLUB**



sky sports TAB

**THE WHANGAMATA CLUB**  
SMOOTH & GROOVE PRODUCTIONS




**THE BOYS**

**13TH JAN SATURDAY**

**6-30PM START**

- \* The Dudes
- \* Six 60
- \* Mark Williams
- \* Herbs
- \* Netherworld Dancing Toys
- \* KC And The Sunshine Band
- \* KIWI CLASICS \* REGGAE VIBES \* PARTY HITS \* OLD SCHOOL \*

- \* Hello Sailor
- \* Dragon
- \* D. D. Smash
- \* Tim Finn
- \* L.A.B
- \* Kool And The Gang

**SATURDAY Night**

Whangamata Club



Local Band  
**PIECES OF EIGHT**

COVERING DANCE HITS FROM 60S TO TODAY

**SATURDAY 27 JANUARY**

**FROM 7:00PM**

The Whangamata Club Presents

**Gerry Lee**

New Zealand's Premier  
Rock n Roll Pianist

**SUNDAY 28TH JANUARY**

from  
6:30pm



**OPEN DAILY FROM 11AM**

**LUNCH**

Daily from 12pm

COME AND ENJOY OUR OUTDOOR AREA

**DINNER**

Daily from 5pm

**RESTAURANT DINING**

Thursday to Sunday from 5:30pm

**OUR NEW SUMMER MENU IS OUT NOW!**

404 PORT ROAD
FACEBOOK.COM/THEWHANGACLUB
WWW.WHANGAMATACLUB.CO.NZ
P. 07 865 8705



**RepcO**

# BEACH HOP™

**WIN!!!** FORD MUSTANG HARLEY-DAVIDSON MOTORBIKE \$10,000 CASH

12,000 PRINT RUN **BOOK NOW** IN THE OFFICIAL PROGRAMME

WHANGAMATA NEW ZEALAND

## Rock 'n' Roll Festival

20<sup>TH</sup>-24<sup>TH</sup> MARCH 2024

**ATTENTION ALL BUSINESSES**

**SECURE YOUR ADVERTISEMENT IN THE REPCO BEACH HOP OFFICIAL MAGAZINE TODAY!**

All sizes big and small, the best exposure you will ever get to a crowd of thousands! Book your advertisement by **Monday, 29 January**.

CALL JENNIE Whangamatā News **Whangamatā NEWS** TODAY on 021 0232 1661

## Elements: A fusion of earth, fire, water, and air in artistic splendour

Harcourts Challenge and what a challenge it's going to be. 2024 will take on a new look, the theme of the challenge is 'The Elements': Earth, Fire, Air, Water.

Four distinct categories with four major prizes attached which promises to be a visually captivating experience for viewers. Each category will comprise of a combination of 2D & 3D work. There will also be a Youth section encompassing the elements as one category and prizes respectively.

The major sponsor is Harcourts Whangamata. A really special thanks to Harcourts Whangamata Business Owner Alyce Rowe, also an artist and who is excited to be in attendance to present the prizes at the Wine & Cheese evening on Friday 26 January at 5pm. Tickets can be purchased at the Whangamata Information Centre. All artworks will be for sale and for priority viewing, you will need to be there!

And what a challenge this will be for Judge Graham Crow from Tauranga. Graham is an experienced judge from a diverse background. His own work encompasses both abstract and retrospective art studies, drawing flora and fauna

and human form. The criterion for the judging extends beyond mere aesthetics to the artists ability to convey their chosen element.

Not only will local Coromandel artists be submitting their work but from other regions, some from as far away as Southland. This challenge promises to be something of a visual treat.

Step into a realm where creativity meets the fundamental forces of nature at the Elements 4 exhibition. This unique showcase invites artists to explore the essence of Earth, Fire, Water, and Air through their imaginative interpretations, promising a visually captivating experience for attendees. It is a celebration of creativity when art and nature converge.

Alongside Harcourts Challenge is the annual Big Arts Day Out (BADO) which is held in the adjacent Memorial Hall with a diverse range of artists displaying artwork for sale, paintings, harakeke, and a variety of craftwork.

**The event runs both Saturday 26 and Sunday 27 January 10am to 4pm both days. Light refreshments will be available.**

# Cosy Fires

[www.cosyfires.co.nz](http://www.cosyfires.co.nz)

Your Whangamata-based gas & wood fire agents.

Available for site visits from the Coromandel to B.O.P. to Hamilton.

Email [sales@cosyfires.co.nz](mailto:sales@cosyfires.co.nz) or call Paul on 027 276 7076



Whilst you're holidaying at your bach this summer, feel free to book in a no obligation appointment with us to view your options for an indoor or outdoor gas or wood fire. We have 50 years combined industry experience throughout New Zealand.

Arts Collective Whangamatā PRESENTS

# HARCOURTS CHALLENGE & BIG ARTS DAY OUT

26TH - 28TH JAN 2024

Harcourts Challenge Prize-giving evening 26th Jan 5pm - 8pm

Whangamatā Memorial Hall

Visit our website: [www.artscollective.co.nz](http://www.artscollective.co.nz)

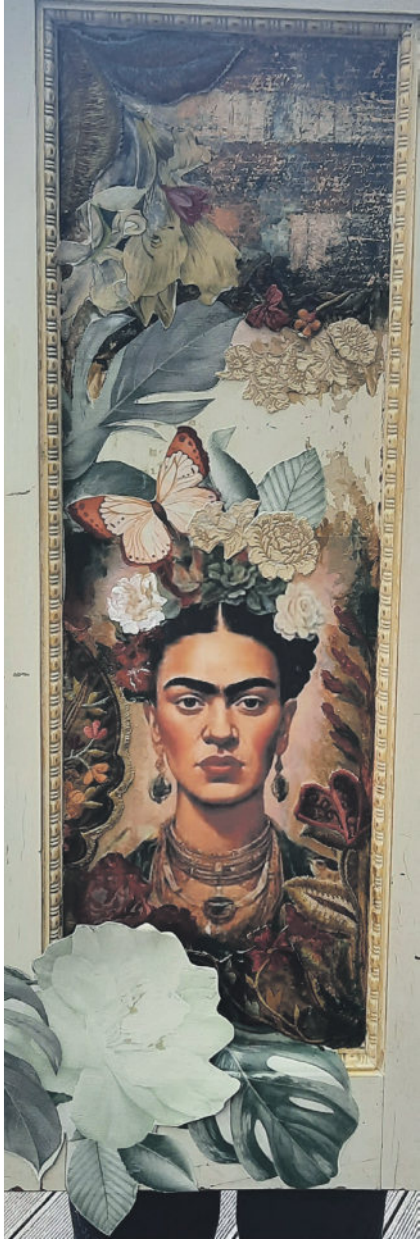
Big Arts Day Out 27th & 28th Jan 10 - 4pm

Tickets and information from the Whangamata Information Centre

**Harcourts** **LiquorLand**  



# Frida Workshop inspirational



Heather Watts, the artist running the workshop.



Sometimes you just need a break from a really busy life, find some inspiration from any form of creativity. Well last Sunday that is exactly what I did. I was so fortunate to attend a Frida Kahlo workshop at Heather Watts home in Kea Street, Whangamatā.

From 10am to 3pm, four other really talented ladies joined me to make some wall art, what a fantastic experience. Everything was supplied, and I mean treasure. Glues, paints, fabrics, wallpapers, stickers, butterflies, buttons and a whole heap of fun.

I wouldn't consider myself the arty type, however, you don't need to be!

Heather talked us through the process and we all chose our canvas, frame or cupboard door and once chosen your 'Frida' it was go for it attitude, no rules, no wrongs and all the help given if you wanted assistance with shape, form and the what-to-next.

At 3pm, Michelle, Judy, Sue, Nikki and myself presented our works, complete or not, to the group and wow, talk about clever - all differing, all colours and so much fun.

I didn't think about newspapers for the whole day!

Get a group together of your mates or guy mates, grab a group discount and book it in with Heather.

Heather can be contacted on 0273 888 007 or email [watt.heather2323@gmail.com](mailto:watt.heather2323@gmail.com)

Just do it!

- Jennie Black



# Half Price.

Sleepyhead Swisstek.

Keep cool with KülKöte Silver technology.

**Where dreams begin.**

**The experts in sleep.**

**30% off.**

Chiropractic Perform Queen Set **From \$1,959**

**50% off.**

Swisstek Select Queen Set **\$3,699**

**50% off.**

Swisstek Elite Queen Set **\$4,899**

BEDS R US WHANGAMATA 419 Port Road, Whangamata PH 07 865 9027  
 BEDS R US WAIHI 94 Seddon Street, Waihi PH 07 863 8787

\*Offer valid to 30/01/24 or while stocks last. Discount offers apply to selected beds and bedding only, prices as marked. Offers exclude Everyday Dream prices, run outs, clearance stock (unless otherwise stated) and not to be used in conjunction with any other offer. See in-store for details. We reserve the right to correct errors and misprints and to change product specifications. All products are advertised in good faith and will be available, except in circumstances beyond our control. Product ranges vary between stores and some products are available in selected stores only.



# Dirt riders impress



On 2 January, Whangamata Dirt Riders Club held their first trail ride since pre-covid times. The event went well with 70 riders traveling from all over to ride the trails situated in the Parakiwai Forest, in Whangamatā.

The locally run club relies on these trail rides for fund and the hard work of the committee members doing regular working bees throughout the year to keep the trails conditioned.

Local rider Ethan Jameson participated in the Redbull Romaniacs last year and utilises these tracks for training purposes. He will be heading back to Romania this year to compete again, so no doubt you will come across him at the next trail ride day.

The next ride date is booked in for the 28 January, from 8am to 3pm. To stay up to date with all communications head to Whangamata Dirt Riders Club's Facebook page or Silver Bullet for ride dates.

Photos by Mark James





**Power and performance**

**SAVE \$1000**



**TC242TX**  
Rear Catcher Model,  
42" Cut, 21.5hp  
Kawasaki V-twin Engine,  
Hydrostatic Transmission

**\$9,490**  
\$10,490 RRP

**SAVE \$500**



**TS142TXD**  
42" Deck, Hydrostatic  
Diff Lock Transmission,  
Kawasaki V-Twin Engine

**\$7,490**  
\$7,990 RRP

**Q CARD**

**36 MONTHS INTEREST FREE\***

\*36 months interest free is available on Long Term Finance (LTF) for in-store and online purchases only. Min spend \$3,490. Lending criteria, \$50 annual Account Fee, fees, Ts&Cs apply. \$55 Establishment Fee applies to your first LTF transaction. \$35 Advance Fee applies to subsequent LTF transactions. Min payments of 3% of the monthly closing balance or \$10 (whichever is greater) are required throughout interest free period. Paying only the minimum monthly payments will not fully repay the loan before the end of the interest free period. Q Mastercard Expired Promotional Rate or Q Card Standard Interest Rate (both 27.99% p.a.) applies at the end of LTF Interest Free Period. (See Ts&Cs for Q Mastercard Standard Interest Rate applicable to outstanding balance of a Standard Purchase.) Rates and fees subject to change. Columbus Financial Services Limited and Consumer Finance Limited reserve the right to amend, suspend or terminate the offer and these Ts&Cs at any time without notice. Mastercard and the circles design are registered trademarks of Mastercard International Incorporated.



**Shaun Prescott, Sales Manager**  
021 285 4870 / 07 864 7801  
1 Hikuai Settlement Road, Hikuai  
[www.prescottsgarages.co.nz](http://www.prescottsgarages.co.nz)



**5 YEAR DOMESTIC WARRANTY#**  
# Terms and Conditions apply, see HUSQVARNA.COM for details.

**We sell and service Husqvarna's huge range of product.**  
**We also demonstrate and deliver.**

Visit [husqvarna.com](http://husqvarna.com) today

Offers valid 1/09/23 – 31/01/2024, while stocks last.





# MEAT @ THE BEACH

9<sup>TH</sup> MARCH 2024  
@ SUMMER BAR WHANGAMATA

## 'ALL YOU CAN EAT FESTIVAL' in Whangamata

# 9 MARCH 2024

12PM - 4PM & 5 PM - 9 PM  
SUMMER BAR WHANGAMATA  
628 PORT ROAD, WHANGAMATA

4+ MEAT STATIONS  
ALL YOU CAN EAT FOR 2 HOURS  
ONSITE BAR  
COLD BREWS  
MEET THE LEGENDARY PITMASTER

TICKETS AT [EVENTFINDA.CO.NZ](http://EVENTFINDA.CO.NZ)

SCAN FOR TICKETS



# MEAT @ THE BEACH

9<sup>TH</sup> MARCH 2024  
@ SUMMER BAR WHANGAMATA

# SAY YES TO HOLIDAY MODE AT SUMMER BAR



**OPEN 7 DAYS**

11am - 10pm  
Central Port Rd  
Whangamata

Summer Bar Whangamata



# Jalopy Dust Up – thrills like no other

**Whangamatā News caught up with Noddy Watts on the epic day we attended at the Waihi Dirt Track on 6 January...**

We were thrilled with how the day went with our biggest ever attendance of race cars (over 50) and spectators.

We had entrants from Carterton to Whangarei with many from the

Rotorua/Tauranga area. There were 4 classes of racing:- Jalopy Dust Cat & Mouse, Vintage Speedway, Historic Stock Cars and the Waihi Beach Dirt Track Saloon cars. The Dash'n'Splash race which was won by Mean Dean from Whangarei in his 1936 Chev Coupe. Although the day is about having as much fun as possible without the need to have prizes.

A shout out to the racers for putting on a great show, our awesome Crew for making things run like a well oiled machine, Waihi Beach Dirt Track Club for the use of their fantastic facility and their on-track work, media for coming and their upcoming coverage.

Spectators who really got into the spirit of the event, Farmer Brown,

and our Sponsors who make it all possible - Classic Cover Insurance, GMS Hot Rods, Rocket, V8 Auto Interiors, JCD Customs & Marine, S&D USA, Waihi Beach Fire Brigade and Whanga Books.

We'll be doing it again next January, 2025, but will take a one year break in 2026.









# Pauanui runs family events to remember



The Pauanui Fun Mud Run held on the Tairua/Pauanui Estuary, as part of the Pauanui Club Summer Festival, is a great event for the whole family.

Everyone was jumping over, through and around obstacles to get to the finish while decked out in fashionable goggles for protection.

A huge thank you to the Pauanui Fire Brigade for getting them a bit cleaner at the end with their trusty hose. A great event for all.



The weather was just right, so it was time to get those helmets and running shoes on for the Pauanui Kids Duathlon.

The duathlon is part of the Pauanui Clubs Summer Festival proudly sponsored by Hopper Development Ltd.

It was so great to have the event back on board for the kids and super great that the kids all gave it a go.

Congratulations to all that took part!

- Photos courtesy of Pat Courtney



## Is your injury holding you back?

Our Whangamatā physio clinic is open all summer long.

Book your physio appointment now!



To book your physio appointment, scan the QR code or call us on **0800 557 556**.

[www.habit.health](http://www.habit.health)



# Beauty abounds

What a fantastic afternoon for Miss Pauanui 2024. The sun was shining, families were out and the contestants had a great fun time.

From Tiny Tots to Miss Pauanui and Master Pauanui, they were out all having a bit of fun in the sun.

Huge thank you to the event sponsor Outback Surf Shop. CFM, you did a fantastic job with keeping us informed and keeping the crowd on their toes. What a great fun event for Pauanui. Pauanui rocks!



# Woof!

What a fantastic morning for the inaugural Pauanui Woof Fun Dog Show 2024.

We had dogs of all sizes, small to giant, and all so very well behaved. Thank you to all that entered their furry friend.

Our three judges had the hard job of picking the best dressed, look-alike, best trick (there were some pretty special ones), golden oldie, scruffiest, waggiest tail and best mover. The judges also had to pick a dog that each one would like to take home.

The dogs had to go through a

hoop, jump a frame and walk the very small plank... but they all took it in their stride when treats were offered.

To our sponsors, a huge thank you: CoroVets, Wash Bar, Pimp Dogs, Mutt Butter and NZ Natural Petfood. The treats went down a treat!

All proceeds from the event will go to Saving Hope - Finding Forever Homes for Dogs, and it was so nice to see some Saving Hope dogs today. This event will continue next year.

- Photos courtesy of Pat Courtney



MERRELL

Redefine adventure.

HYDRO MOC.

For the way finders, the adventurers and the explorers.

Take on adventure - in your own way.



merrell.co.nz



# Whiritoa Surf Carnival a win for all

Thanks for an amazing carnival on 7 January! We loved seeing all the kids have such an amazing time competing and knew everyone had fun. A special thanks given to all the amazing parent helpers and surf coaches who helped make the carnival day happen and who looked after every child - we appreciate you all!



## WE'RE BACK!

Helping young people in Whangamata to drive safely and intelligently.

Lesson appointments are now open in Whangamata each month from now and through the summer

It was great to be at school with learner licencing, now back for on road practical driving.

## Thames Driver Training

Book online at [thamesdrivertraining.co.nz](http://thamesdrivertraining.co.nz) or use the QR code

Gavin Buchanan – Thames Driver Training  
027 268 6381



**CELLAR DOOR HOURS:**  
 THURS: 2 - 6PM  
 FRI & SAT: 12 - 6PM  
 101B WINIFRED AVE  
 Behind Whanga Bar cafe  
[www.saltdistrictbrewing.co.nz](http://www.saltdistrictbrewing.co.nz)



### MD Design Ltd – Architectural Design

Additions. Alterations. New Builds.

For a free no obligation chat on your next project contact Mark Butler

M: 027 478 6606 E: [mddldesign@gmail.com](mailto:mddldesign@gmail.com)

[facebook.com/mddldesign](https://www.facebook.com/mddldesign)



AS SEEN  
ON TV



Waikino



from \$839,000

- Standalone Villa
- 131m2
- 2 brms
- + Study
- 1 bathroom + Guest WC
- Single garage (Double option)

Maratoto



from \$839,000

- Standalone Villa
- 131m2
- 2 brms
- + Study
- 1 bathroom + Guest WC
- Single garage

Hauraki



from \$699,000

- Duplex Villa
- 111m2
- 2 brms
- + Study
- 1 bathroom + Guest WC
- Single garage



We never expected to live here...but we love it!  
*Ron and Raywin previously from Herne Bay, Auckland*

# LONGRIDGE

C O U N T R Y E S T A T E



44 Waimarei Avenue, Paeroa. Phone Free **0800 928 928** • [www.longridgecountryestate.co.nz](http://www.longridgecountryestate.co.nz)



# Rescue Helicopter Trust supported with new vehicle

With 14 Coromandel Peninsula based missions during December, the positioning of a Westpac Rescue Helicopter at Whitianga for the holiday season has been well supported.

Already Farmer Auto Village has assisted this year's peak season providing the Coromandel Rescue Helicopter Trust with a utility vehicle.

The vehicle has been presented to the Trust for use across the region to support the rescue helicopter operations.

Trust chairman, John Stephenson, said the generosity of Mike Farmer and his team at Farmer Auto Village was appreciated, the vehicle would be an asset to the trust and rescue helicopter team while based on the peninsula.

The helicopter will be based at the Whitianga airfield until mid-February, crew using the Trust's accommodation facility during the period.

While December's missions spanned most areas around the region, isolated areas such as Port Jackson



Mike Farmer delivers the new utility vehicle to Trust chairman John Stephenson.

and Waikawau were the subject of calls. Early January calls have included calls to the likes of Opito Bay, Colville and Great Barrier Island.

The local Trust continues to raise funds for the rescue helicopter service with the likes of several

donation boxes located across the local community, while a recent golf day at Whangamatā saw \$12,000 raised.

Donations can be made through the Trust's website: [coromandelrescue.org.nz](http://coromandelrescue.org.nz).

For more information please contact: John Stephenson on 027 437 5321 or John Freer on 027 483 9426

- Coromandel Rescue Helicopter Trust

## ROOFING

**LOCALLY OWNED & OPERATED**

For: New roofing | Re-roofing  
Continuous spouting | Metal fascia  
Downpipes

**CALL US FOR YOUR FREE QUOTE**

Geordie Walden: 022 396 4143  
[ccspouting@gmail.com](mailto:ccspouting@gmail.com) | [www.ccspouting.co.nz](http://www.ccspouting.co.nz)

**fairview**  
EXCEPTIONAL WINDOWS & DOORS

WHANGAMATA  
07 865 8919  
[www.fairviewwhangamata.nz](http://www.fairviewwhangamata.nz)

## HIRE Your Epic Ride!

CROCS  
3 & 6 seaters

MURF BIKES

TRIKES

KIDS BIKES

*New owners! Jenny & Geordie, locals in Whangamata for 12 years!*

[www.whangamatacycles.com](http://www.whangamatacycles.com) Phone 865 8096 700 Port Rd, Whangamata



# Surf Club Annual Appeal: exceptional result



The annual New Year's day collection is part of Whanga Week®. Whanga Week® was started by our late club patron Richard Scelly Q.S.M. over 35 years ago, to raise funds for operational costs and is also a valuable way for the club to come together and engage with the Whangamata locals and visitors.

Sadly, Richard passed away recently but continues to be remembered and celebrated through these activities.

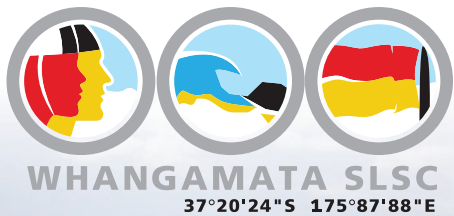
The annual collection could only happen with the generous support of our club members and volunteers who drive around the streets of Whangamata, encouraging the community to come out and donate whatever

they can. This year the club also used the Mika Giving App which allowed donations to be received via debit and visa card.

WSLSC were overwhelmed with the generosity on New Year's Day and the collection on the streets, monies collected to date approximately a whopping \$30,000.

Whanga Week® activities also included the Golden Homes Classic Harbour Swim on the 29th December with 97 participants and the GJ Gardner Beach Fun Run and Walk with more than 150 runners, on 30 December.

It's just fantastic how locals and visitors from afar come and join in these huge annual beach events!



*Thank you, Whangamata!*

Whangamata Surf Life Saving Club Inc would like to thank all those who gave so generously at our annual collection on 1 January, 2024. We were overwhelmed by the number of donations which supports us to continue to do what we do for the community!

**Missed us and would like to donate?**

Account is 021254 0027806 000. If you would like a receipt for any donation made online please email [admin@whangamatasurf.co.nz](mailto:admin@whangamatasurf.co.nz)

If you see someone in difficulty please dial 111 and ask for the Police.

**WHANGAMATA**  
SURF LIFE SAVING

**f** Cnr Lowe Street & Esplanade Drive  
Whangamata  
[manager@whangamatasurf.co.nz](mailto:manager@whangamatasurf.co.nz)  
(07) 865 8401

[www.whangamatasurf.co.nz](http://www.whangamatasurf.co.nz)

*To all of our sponsors, members, supporters and friends;  
we couldn't do what we do without you.*

Thank you from the bottom of our collective hearts.  
Wishing everyone a safe and happy holiday season.

*Living the lifestyle,  
loving the choice...*

A Lifestyle Village in Thames on the Coromandel

**AVAILABLE NOW:**

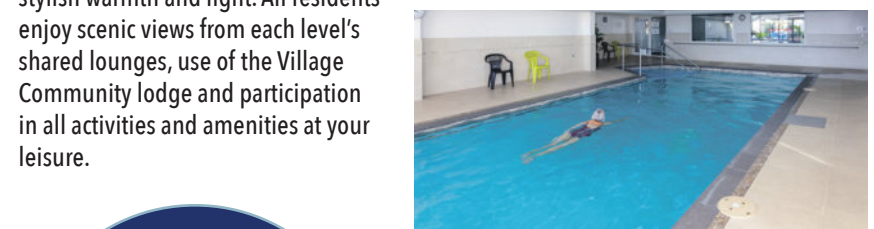
- **TWO BEDROOM VILLAS**
- **ONE BEDROOM APARTMENT ON LEVEL 3**
- **ONE BEDROOM APARTMENT ON LEVEL 2**

**ENQUIRE TODAY!**

All apartments are within walking distance to Thames' shops, cafes and walkways. The perfect location to enjoy your fun-filled retirement.

Our open plan, single level apartments feature covered balconies with fantastic views of the sea, Kuaeranga River and mountains.

Each unit's elegantly finished kitchen, lounge, bedroom and bathroom offer stylish warmth and light. All residents enjoy scenic views from each level's shared lounges, use of the Village Community lodge and participation in all activities and amenities at your leisure.



**Phone us to view by appointment**  
*Come and experience the difference!*



82 Richmond Street, Thames  
0800 868 5484  
[www.richmondvillas.co.nz](http://www.richmondvillas.co.nz)



# WHANGAMATĀ SANDS

LIVE YOUR  
BEACHSIDE DREAM



CONSTRUCTION COMMENCING 2024



FREEHOLD LUXURY  
HOMES SELLING NOW



4 Bedroom



3 Bathroom



Media Room (in Lots 2 - 5)



Double Garage (lift option available)

104 BARBARA AVENUE (Site accessed via St Patricks Row)

[whangamatasands.co.nz](http://whangamatasands.co.nz)

Neil Dayal  
Barfoot & Thompson  
027 322 0989  
[n.dayal@barfoot.co.nz](mailto:n.dayal@barfoot.co.nz)

Colin Thompson  
Whangamatā Real Estate  
021 723 723  
[colin@whangamatatarealestate.co.nz](mailto:colin@whangamatatarealestate.co.nz)

BARFOOT  
THOMPSON &  
PROJECTS

Whangamata  
Real Estate





Whangamatā properties by **Lindsay Turnbull**

Lindsay Turnbull | 0274 238 093

[lindsay.turnbull@realty.co.nz](mailto:lindsay.turnbull@realty.co.nz)

[www.atrealty.co.nz/lindsayturnbull](http://www.atrealty.co.nz/lindsayturnbull)



**FOR SALE**

104B AICKIN ROAD

4 2

\$1,150,000



**FOR SALE**

228A CHARTWELL AVE

5 2.5 2

\$1,290,000



**FOR SALE**

101 HILTON DRIVE

3 1 2

\$1,080,000



**FOR SALE**

2D 105 AICKIN ROAD

2 1 2

PRICE BY NEGOTIATION



**FOR SALE**

121 TE TUTU

4 2

PRICE BY NEGOTIATION



**UNDER CONTRACT**

387 WENTWORTH VALLEY

TERMS APPLY



# Missing vessel: Betty G

Keep an eye out for this missing vessel. The Betty G is 12m long and likely adrift although idling - the captain fell overboard near the Aldermens.

The captain was the sole occupant of the vessel and was found alive after 23 hours at sea.

The vessel could still be in our waters and beyond, so please keep an eye out

**If you have seen anything unusual please let the Coastguard know. Phone 07 865 8800 - monitored 24/7.**



# Pedestrian point of view

I am frequently in the township and as well as people like me using their feet, I find myself sharing the pavement with bikes, e-bikes, scooters, skateboards, teenagers on skates, mobility scooters, wheelchairs and prams.

The only time I and my fellow travellers have been alarmed is with a mobility scooter which made a radical amputation of my toes a real possibility and my fellow pedestrians were scattering in all directions to avoid becoming human skittles!

I also don't believe riding on the footpath is illegal, but may be an offence under a council by-law.

As such it is not a police matter but up to the council to enforce, but as there have been no complaints how can they?

I'm sure ratepayers would not take kindly to an increase in rates to cover enforcement officers for something they have had no complaints over.

Coming from the Ratepayers Association this does seem rather an own goal to use a footballing analogy.

Also the fact that there have been no complaints to council about bikes on the footpaths

speaks volumes for normal everyday people who just want to live and let live, as at one end of the scale it seems very mean spirited and a manifestation of a loss of contact with reality and living, and at worst totally discriminatory against a swathe of the population whose needs also need to be recognised, especially with the resurgence of cycling.

If it is a by-law, it needs to be thrown in the bin where it belongs.

As a holiday destination both feet and wheels should be welcome as they are all an essential part of the Whangamatā economy, and not only to the continuation of the businesses we are so lucky to have here, but in the ethos of Whangamatā being a laid back welcoming community which surely we wish to keep.

I and my friends, who luckily do not have a pathological hatred for bikes, would respectfully request that the Whangamatā Ratepayers Association lobby for signage indicating that all footpaths are a shared area and to just show consideration for other users.

- Anna Maria Slater

**Editor's Note:** I don't necessarily agree with all submissions that come into the Whangamatā News, but everyone has a right to voice their opinion. - Jennie Black

## CARAVAN FOR SALE

**Jayco 28 Foot 2002 - VIEW LOCALLY**



**Need room for family this summer? Holiday workers need accommodation?**

**AFFORDABLE TINY HOME!**

Totally renovated, new carpet, vinyls, repainted interior, shower, toilet, double bed, oven, it really is chic! All the extras! Registered.

**PRICE REDUCTION NOW \$50,000! Contact 0271 0232 1661**



*Happy Holidays!*

**Lindsay Turnbull | 0274 238 093**  
lindsay.turnbull@realty.co.nz



**FOR SALE PBN**

105B Tobie Place, Whangamata

3 2 3 1

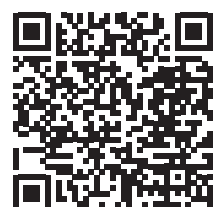
### SPACIOUS AND SEAMLESS

This is a true home. This lovely house can not be completely expressed through pictures, it needs to be viewed in person.

Open to view and private inspections will be as normal but we feel that a chat and a cup of tea is more suitable for 105B.

We would love to know what you feel a fair amount would be for this forever piece of Whangamata

Off the family-friendly cul de sac, the driveway leads you to the established garden.....quiet and private.





# Books

## DARK ARENA: THE FRENCHMAN RETURNS

JACK BEAUMONT

Alec de Payns, espionage operative of the Y Division of the DGSE, France's famed foreign intelligence service, is tasked with hunting down an agent of influence posting highly classified material against the Kremlin to embassies all over Europe.

A deadly conspiracy is aligning the West against Russia. But who is

behind it? And to what end?

The clues lead to a secret meeting of businessmen, terrorists and mercenaries on a luxury yacht in the Mediterranean, which de Payns must infiltrate. What he discovers sets off a Europe-wide manhunt in a desperate scramble to prevent an international catastrophe.



## ARGYLE

ELLY CONWAY

One Russian magnate's dream of restoring a nation to greatness has set in motion a chain of events that will take the world to the brink of chaos. Only Frances Coffey, the CIA's most legendary spymaster, can prevent it. But to do so, she needs someone special.

Enter Argyle. His life came to a crashing halt as a teenager. Since then he has been treading water, building barriers between himself and the world. Until one moment of compassion and brilliance brings him

to the attention of the most powerful woman in the secret world.

Coffey knows all about Argyle's dark past. She knows it haunts him. But she also knows it may have given him the skills to join the team going up against one of the most powerful men in the world. His crash course in espionage will take him from the jungles of Thailand to the boulevards of Monaco, from the monasteries of Mount Athos to a forgotten cavern buried deep in the mountains.

**BOTH BOOKS ARE AVAILABLE FROM WHANGA BOOKS**

## Poet's Corner

Listen....  
Hear them  
Words that died  
An age ago  
Words formed  
Disappeared  
Lost in time  
Gently calling

- M. Stankovich

**We want your poems!**

Send your poem to  
WhangamataNews@gmail.com

# CLASSIFIEDS

## PUBLIC NOTICES



### START OF YEAR INFORMATION 2024 KEY DATES:

#### Monday 22nd January

School Office reopens from 9am - noon for enrolments and enquiries

#### Friday 26th January

Year 11-13 Course Confirmation morning from 9am-noon in the School Library

#### Monday 29th January

Auckland Anniversary Public Holiday

#### Tuesday 30th January

Teacher Only Day (Office open all day)

#### Wednesday 31st January

School Commences for Year 12 and 13 students only

#### Thursday 1st February

School commences for ALL students

#### Friday 2nd and Monday 5th February

School as normal

#### Tuesday 6th February

Waitangi Day Public Holiday

**PORT ROAD, WHANGAMATĀ - PHONE 865 8557**

## Whangamatā Tides 2024

JANUARY 2024										
☾ New Moon: 12 <sup>th</sup> ● Full Moon: 26 <sup>th</sup>										
Date	High tide AM	Height (m)	High tide PM	Height (m)	Low tide PM	Height (m)	Low tide PM	Height (m)	Sun rise	Sun set
12	Fri	8:28	1.9	20:40	1.9	1:58	0.2	14:30	0.4	06:07 20:40
13	Sat	9:19	2.0	21:34	1.9	2:49	0.2	15:23	0.3	06:08 20:39
14	Sun	10:10	2.0	22:26	1.9	3:40	0.1	16:15	0.2	06:09 20:39
15	Mon	11:00	2.1	23:19	1.9	4:30	0.1	17:07	0.2	06:10 20:39
16	Tue			11:51	2.1	5:21	0.2	17:58	0.2	06:11 20:38
17	Wed	0:12	1.9	12:42	2.0	6:13	0.2	18:50	0.2	06:12 20:38
18	Thu	1:06	1.9	13:34	2.0	7:07	0.3	19:43	0.2	06:13 20:38
19	Fri	2:02	1.8	14:27	1.9	8:03	0.4	20:37	0.3	06:14 20:37
20	Sat	3:00	1.8	15:21	1.8	9:01	0.4	21:34	0.3	06:15 20:37
21	Sun	4:01	1.8	16:18	1.8	10:02	0.5	22:31	0.4	06:16 20:36
22	Mon	5:02	1.7	17:15	1.7	11:03	0.5	23:29	0.4	06:17 20:36
23	Tue	6:00	1.8	18:12	1.7			12:03	0.5	06:19 20:35
24	Wed	6:55	1.8	19:07	1.7	0:25	0.4	12:59	0.5	06:20 20:34
25	Thu	7:46	1.8	19:58	1.7	1:17	0.4	13:50	0.5	06:21 20:34
26	Fri	8:32	1.8	20:45	1.7	2:05	0.4	14:38	0.5	06:22 20:33
27	Sat	9:15	1.8	21:29	1.7	2:49	0.4	15:22	0.5	06:23 20:32
28	Sun	9:55	1.8	22:09	1.7	3:30	0.4	16:03	0.5	06:24 20:32
29	Mon	10:33	1.8	22:48	1.7	4:09	0.4	16:42	0.5	06:25 20:31
30	Tue	11:10	1.8	23:26	1.7	4:46	0.4	17:19	0.5	06:26 20:30
31	Wed	11:47	1.8			5:24	0.4	17:57	0.5	06:28 20:29

FEBRUARY 2024										
☾ New Moon: 10 <sup>th</sup> ● Full Moon: 25 <sup>th</sup>										
Date	High tide AM	Height (m)	High tide PM	Height (m)	Low tide PM	Height (m)	Low tide PM	Height (m)	Sun rise	Sun set
1	Thu	0:05	1.7	12:24	1.8	6:03	0.5	18:35	0.5	06:29 20:28
2	Fri	0:46	1.7	13:03	1.8	6:45	0.5	19:16	0.5	06:30 20:27
3	Sat	1:30	1.7	13:45	1.7	7:30	0.6	20:00	0.5	06:31 20:27
4	Sun	2:19	1.6	14:31	1.7	8:19	0.6	20:49	0.5	06:32 20:26
5	Mon	3:13	1.6	15:22	1.7	9:13	0.6	21:43	0.5	06:33 20:25
6	Tue	4:12	1.6	16:19	1.7	10:12	0.6	22:41	0.5	06:34 20:24
7	Wed	5:14	1.7	17:21	1.7	11:13	0.6	23:41	0.4	06:36 20:23
8	Thu	6:13	1.8	18:23	1.8			12:14	0.5	06:37 20:22
9	Fri	7:10	1.9	19:24	1.8	0:39	0.3	13:13	0.4	06:38 20:21
10	Sat	8:05	2.0	20:21	1.9	1:35	0.3	14:09	0.3	06:39 20:20
11	Sun	8:57	2.0	21:16	2.0	2:28	0.2	15:03	0.2	06:40 20:18
12	Mon	9:48	2.1	22:09	2.0	3:21	0.1	15:55	0.2	06:41 20:17
13	Tue	10:39	2.1	23:01	2.0	4:12	0.1	16:46	0.1	06:42 20:16
14	Wed	11:29	2.1			5:03	0.1	17:37	0.1	06:43 20:15
15	Thu	11:55	2.0	12:19	2.1	5:55	0.2	18:27	0.2	06:44 20:14



# Only the BEST TRADIES will do! Use Locals... For Locals... Support Locals!

## SMALL ENGINE REPAIRS

### ANTS REPAIRS

Whangamata-based small engine repairs & maintenance

- Chainsaws • Lawnmowers
- Ride ons • Weedeaters

021 0244 2791  
ants.repairs.nz@gmail.com

## LAND DEVELOPMENT



Subdivisions  
Boundary Markings  
Land Use Consents Topographical Surveys  
Building Setout and Certifications

Contact us  
0508 4 BIRCH  
tairua@birch.nz  
244 Main Road, Tairua  
www.birch.nz

## EARTHWORKS



- Bobcat & excavator
- Tight access work
- Site works
- Topsoiling
- Driveways
- Hole drilling
- Concrete prep
- Cartage

Shay 021 742 966 | www.blackhillearthworks.co.nz  
info@blackhillearthworks.co.nz

## IT SUPPORT



Boot it.

FIBRE INTERNET  
now available to  
order from Boot I.T.

We are the Coromandel's  
only local Fibre Internet  
Provider, and the ONLY  
provider that offers 7 days  
per week support.

Call us on 0800 242 266  
to find out more.

## PAINTER

Gavin Johnson  
PAINTER & DECORATOR

Interior/Exterior Painting

Wallpapering

Cedar Cleaning and  
Restoration Service

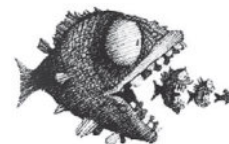
0224 552 363

brushstrokeswhangamata@gmail.com



## HIRE / SUPPLIES

### Bubba's



Outdoors & Hire

321 Casement Rd,  
Whangamata

OPEN 7 DAYS

- LPG Refills • Ice • Bait • Rods • Reels
- Tackle • Chandlery • General Hire

P. 07 865 7464

## LANDSCAPING

### Beach Contractors & Landscape Supplies

#### LANDSCAPING SUPPLIES:

- Bark, mulch, compost and topsoil
- Sand, lime chip, river stones and pebbles
- Cement, builder's mix and a range of metals

Delivery service available

Whangamata Yard  
2546 Waihi Whangamata Rd  
M. 027 261 1262

Waihi Beach Yard  
691 Waihi Beach Rd  
P. 07 863 5340

## CONCRETE

### BROWNMORE CONSTRUCTION

#### CONCRETE CONTRACTORS

Any Concrete Requirements: Slabs, driveways, patios, paths, etc  
All types of concrete - colour - finish  
Council Permits for Vehicle Crossings

Excavation to finished product • Saw cutting & drilling

*We take pride in doing a quality job at a competitive rate*

REX: 027 285 5489

P. 07 863 3364 • office@brownmoreconstruction.co.nz

www.brownmoreconstruction.co.nz

## FENCING

RURAL FENCING • RESIDENTIAL FENCING  
POST AND RAIL • RETAINING WALLS  
POLE SHED BUILDINGS  
ORCHARD BUILDS & MAINTENANCE



BLAIN TEMPELMEYER 027 784 6538  
coastlinefencing7@gmail.com

## GLASS SPECIALISTS

### COASTLINE GLASS FRAMELESS GLASS SPECIALISTS

#### UNOBSTRUCTED VIEWS, UNMATCHED STYLE

Specialists in frameless glass solutions for residential and commercial properties, offering high-quality products and exceptional service to our clients. We are experienced professionals dedicated to providing fencing and balustrade solutions that complement the natural beauty of our coastal surroundings.

Contact us to discuss your project today.

Kyal Ryburn: Phone 021 271 1193 / Email admin@coastlineglass.co.nz

## PAINTER

### Coastline Property Painters

Protecting your investment Communication is everything  
Interior Exterior Roofs Updates & photos as your job progresses

Call Richard Upton: 0274 884 881 / www.coastlinepropertypainters.com

## BUILDING WASHING



COROWASH  
www.corowash.co.nz

### COROMANDEL HOUSE & BUILDING WASHING

No Mould, No Salt Pure Satisfaction

info@corowash.co.nz  
Bronson Phillips 0223991130

## OUTDOOR COVER

### Covered.

- Louvres
- Privacy Panels
- Awnings
- Sails

LOUVRESYSTEMS

info@covered.co.nz 07 865 6207 or 027 497 1236  
www.covered.co.nz 300 Casement Rd. Whangamata

## CURTAINS / BLINDS



Specialising in:

- Curtains
- Roman Blinds
- Cushions
- Duvet Covers
- Roller Blinds
- Shutters

croft design

306 CASEMENT ROAD, WHANGAMATA  
M. 0274 481 957 | E. beth@croftdesign.co.nz

## CURTAINS / BLINDS

### Curtains and Blinds

Whangamata

LOCALLY OWNED AND OPERATED

- Curtains
- Roman Blinds
- Roller Blinds
- Venetian Blinds
- Slats
- Shutters

100% Mobile Service  
We come to you  
Free Measure and Quote

Call us on 027 4777 916  
info@curtainsandblinds.co.nz



# Use Only the Best Services in our Community! Use Locals... For Locals... Support Locals!

## BARBER



**Cuts by Sami**  
FOR ALL YOUR BARBER NEEDS

07 865 8582 | 604 Port Rd, Whangamata

✉ cutsbysaminz@gmail.com

Facebook: cuts by Sami | Instagram: cuts\_by\_sami

## FRAMING



- Picture framing
- Framed mirrors
- Art installation
- Pick up & delivery

Ade Cunningham  
M. 0274 929 695 or P. 07 575 9149  
info@framesnz.co.nz • www.framesnz.co.nz  
118 Brook Pl, Whangamata

## PAINTER

**Gerards Painting Services**

Small jobs are my specialty!

PHONE: **021 108 5996**



## HAIR WRAPS



**HAIR WRAPS**

☎ 0211 700 685

🏠 312 Port Rd Whangamata

SUMMER-SOUL

## HANDYMAN

**HANDYMAN**

30 yrs experience, specialising in:

- Bathroom, deck & building repairs
- Gib fixing & plastering
- Interior /exterior painting

Please ring Rex on 021 997 428

## BUILDING & LANDSCAPING

**HBL HANSEN BUILDERZ**  
BUILDING & LANDSCAPING

COMMITTED TO EXCELLENCE  
Contact us to discuss your project & a free estimate today



ADRIAN 0274 263 895 | hansen.builderz@gmail.com | HBLHomesnz  
Residential | Commercial | Alterations | Additions

## ARCHITECTURAL BUILDERS

**HOME & Lifestyle**

- Architectural Builders
- Interior & Colour Design Services
- Project Management

For trusted expertise with your building project  
Katrina Jackson 027 273 0685 | Leigh Goodman 027 4475 423  
info@homeandlifestyle.co.nz

## LOCKSMITH

**Homesafe Locksmiths & Services**

ONE key to fit ALL doors!  
FREE advice on your lock requirements

Ian McAuley (Macca) Owner/Operator  
• 126A Tamaki Rd, Whangamata  
• P 021 719 495 or 07 865 7092 • E imacca2003@yahoo.co.nz



## BUILDING WASHING

**HOUSE WASHING**

Exterior house or commercial building wash, roof wash, fences, driveway, patios – soft-wash for best moss and lichen clean and treatment, exterior window cleaning, or general water blasting, 100m of hose so access is no problem  
Prompt local service with 20 years' experience  
Ph 0800 747 787 email atlasgroup@xtra.co.nz  
or dial Andy direct on 027 313 4386

## CLEANING

**jae** we'll take care of it

- Carpet Cleaning
- Pest Control
- Flood & Fire Restoration
- Stain Removal
- Upholstery Cleaning

07 863 8358 or 0800 225 552  
whangamata@jae.co.nz




## EXCAVATION & LANDSCAPING

**JF DAVIS CONTRACTING**  
Whangamata & Surrounds

- All Excavation & Demolition work
- Concrete jobs from start to finish
- Tree Removal
- Landscaping
- Chainsaw work

Contact Jason 0274 938 466



## AUTOMOTIVE & BOATS

**JCD CUSTOMS & MARINE**

**BOAT TRAILERS, CARS, CLASSIC & HOT RODS**

ONLY **Repco** STOCKIST IN TOWN!  
ONLY **HONDA** AGENT IN TOWN!

Aickin Road, Whangamata (next to Bunnings)  
P. 865 9073 | E. office@jcdcustoms.co.nz  
Mon-Fri from 8am



## TRAVEL BROKER

**Kay M Gregan The Travel Designer Ltd**  
TAANZ Bonded Travel Broker, CLIA Accredited Cruise Specialist

**For all your travel needs:**  
Flights | International & Domestic Holidays | Hotels | Honeymoons  
Bespoke Group Travel | Coach Journeys | Ocean & River Cruises  
School Groups | Vehicle Rentals | Travel Insurance | Visa Assistance

Whangamata: +64 7 865 9568 Mobile: +64 27 337 6222  
thetravelbrokers.co.nz/kaygregan  
Kay.Gregan@thetravelbrokers.co.nz



## BUILDER

**Keith the Builder LBP**

Need something done?  
For maintenance, decking, fencing, repairs, interior work and all enquiries

PHONE FOR FREE QUOTE  
Keith phone 0272 262 039





# Only the BEST TRADIES will do! Use Locals... For Locals... Support Locals!

## ELECTRICAL



**Electrical Laser**  
"Totally Dependable"  
**AVAILABLE 24/7**

Residential | Commercial | Heat Pumps  
Fire Systems  
P. 865 9309 | whangamata@laserelectrical.co.nz  
NEW LOCATION: 100 Lindsay Road

## KITCHEN



**WHANGAMATA WOODWORKS**  
Specialists in design, manufacture & installation of kitchens, wardrobes & custom cabinetry  
108 Lindsay Rd, Whangamata P. 865 7947 whangamatawoodworks.com

**MASTERCRAFT KITCHENS**

## JOINERY

**McBeth Rd Orchard Joinery**  
Affordable joinery

Kitchens new or upgraded  
Laundries & bathrooms  
Wardrobes & storage units  
Free estimates

**Tony & Nicky Ball - 027 229 2255**  
Whangamata

## BUTCHER

**MEAT AT THE BEACH**

**Support your local Butcher!**  
BBQ meat packs, in store made sausages, patties, tasty chops, steaks, butterflied chickens & much more.  
"The home of Whanga bacon"

601 PORT ROAD, WHANGAMATA P. 07 865 7241  
MON-FRI 8.30AM-5PM • SAT 8.30AM-3PM

## BUILDER

**MJC BUILDERS**  
Building with pride

- FENCING
- DECKS
- PERGOLAS
- ROOFING
- ALTERATIONS
- BUILDING REPAIRS
- CONCRETE DRIVEWAYS
- FULL LANDSCAPING

**MIKE CUNNINGHAM** M. 021 0677 555  
E. mjc.builder.whangamata@gmail.com

## TREE SPECIALIST



**Nicholson Tree Services**  
**QUALIFIED ARBORIST**  
30 years experience in all aspects of tree work

- Pruning
- Felling
- Storm damage
- Hedge trimming
- Confined space dismantling
- Debris chipped
- Free quotes and more

Professional and reliable service - fully insured  
Phone Greg Nicholson on 07 865 6769 or 021 133 0937  
email: nicholsonsreeservices@hotmail.com

## PARTY EQUIPMENT

Table & Chairs  
Marquee & Gazebo's  
Lighting  
Bar Equipment

Tableware  
Kitchenware  
Cooking Equipment  
Audio & Machines

Whangamata  
**Party Hire**

Lovie 021 297 0293 / Lofty 021 364 7893  
info@whangamatapartyhire.co.nz  
www.whangamatapartyhire.co.nz

## PODIATRY

**Pedicare Services**  
Professional Foot Care

**Alison Walkington**  
Registered Nurse  
Home visits by appointment

Mobile 027 663 2320 or  
email alison.c.walkington@gmail.com

## POOL & SPA SERVICES



**Pool Queen LTD**  
MOBILE POOL & SPA CLEANING SERVICES  
Sharleena Tucker ~ poolqueen@outlook.co.nz  
**027 316 3384**  
Coromandel Peninsula

## WINDOW CLEANING



**Pure n Clean**  
Your ecofriendly window cleaning service.

Mike Horton M 021 501 324  
info@purenclean.co.nz www.purenclean.co.nz

## HEAT PUMPS



**Reef REFRIGERATION & AIR CONDITIONING LTD**

**We Sell and Service all Major Brands**  
Your heat pump specialist  
On site marine & commercial refrigeration  
Call today for a hassle-free quote  
**027 933 8599**  
www.reefrefrigeration.co.nz

## BINS

**Skip Bins, Wheelie Bins, Front Load Bins**  
Contact us today! *We can help!*



**smart environmental**  
**0800 4 MY BIN - www.smartbins.co.nz**  
Proudly 100% Kiwi owned

## BUILDER



**SKF RESIDENTIAL SERVICES**  
Qualified Builder / LBP  
07 865 6555 skfrs@xtra.co.nz

## PLUMBER

**Russell CHOAT GAS & Plumbing**  
Whangamata

**FOR ALL YOUR GAS-FITTING, PLUMBING, DRAINAGE & ROOFING REQUIREMENTS**  
Registered craftsman & member of Master Plumbers  
M. 0274 714 869 E. CHOATS@XTRA.CO.NZ

## ELECTRICIAN / DOG GROOMER



**Rusty Sparks**  
EVERYTHING ELECTRICAL  
Residential, Commercial, Data, Alarms  
@f 021 800 017  
admin@rustysparks.nz



**PIMPED PUPS GROOM ROOM**  
@f 021 850 017  
WHANGAMATA



# Use Only the Best Services in our Community! Use Locals... For Locals... Support Locals!

## BOARDING KENNEL / CATTERY



**SPOT X**  
BOARDING KENNELS AND CATTERY

Quality care and facilities in a rural setting  
Office hours: 9am-12 noon and 3-5pm daily  
INSPECTION WELCOME  
Ph 07 865 8242 or 027 624 3890  
Annette Gillatt  
4km south of Whangamata on the main road

## REFRIGERATION & AIR CON

**TIDELINE REFRIGERATION**  
WHANGAMATA

- \* HEAT PUMPS
- \* REFRIGERATION
- \* AIR CONDITIONING
- \* VENTILATION

SERVICING IN THE COROMANDEL AREA  
0272121994 - 0277251820  
TIDELINEREFRIGERATION@GMAIL.COM  
WWW.TIDELINEREFRIGERATION.COM

## TREE SPECIALIST



- Tree felling & pruning
- Hedge trimming
- Stump grinding
- Fully insured
- Qualified arborist

**TREECARE WHANGAMATA LTD**  
Contact Ben 021 827 355  
treecarewhangamata@gmail.com

## ARBORIST



- Professional experienced and insured arborist
- All tree work including removal / pruning
- Hedge trimming and property maintenance
- Quality firewood and smoker wood

Heath van Leeuwen 0210 838 9922  
email Heathsvan@gmail.com

## LAWYERS

**USSHER LAWYERS**  
- SINCE 2007 -

**We can help with all of your general legal needs**

- Conveyancing if you are buying or selling property
- Sale and purchase of business assets • Commercial leasing
- Relationship property • Trusts • Wills • Enduring powers of attorney

www.ussherlawyers.co.nz | Phone 07 865 8824  
We've moved - now at 123 Lindsay Rd, Whangamata

## WARDROBES



**WAIKATO WARDROBES**

Nadine & Duncan Waterson - Servicing the Coromandel

- Custom Wardrobe Systems
- Sliding Doors
- Entertainment and Study Units
- Home Storage-Garage / Laundry

07 850 9959 / 027 4793 750 / waikatowardrobes.co.nz  
info@waikatowardrobes.co.nz

## WARDROBES



**WARDROBES DIRECT**

Steve Parkinson  
Central, East & South  
021 0733 100  
steve.parkinson@xtra.co.nz

ALSO SERVICING WHANGAMATA  
www.wardrobesdirect.co.nz

Showroom Unit 2, 63 Morrin Rd St John's Auckland

## LAUNDRY

**WHANGA LAUNDROMAT**



"The only locally owned & operated laundromat in town!"  
OPEN 24 HOURS - 7 DAYS A WEEK  
CASEMENT RD, WHANGAMATA (OPPOSITE WAITOMO FUEL)

## SCAFFOLDING



- Mobile scaffolding
- Roof edge protection
- Construction scaffold

Servicing Whangamata and surrounding areas

Please ring 022 076 0160 or email whangamatascaffolding@gmail.com  
102 Lindsay Road, Whangamata Est 2014

## SEAFOOD

**WHANGAMATA SEAFOODS**  
2021

112 WATTLE PLACE  
PH: 027 318 7495

## TYRE & BATTERY SERVICES



**WHANGAMATA TYRE & BATTERY**

KUMHO TYRES 7

Car tyres / Wheel alignment  
4WD tyres / Tyre repair  
Wheel balance  
Small implement tyres  
Batteries - car & marine

Phone Simon 865 7698

**CHALLENGE** Cnr Port & Ocean Rd, Whangamata  
www.challenge.net.nz

## WINDOW & DOOR SERVICES



**WHANGAMATA WINDOW & DOOR SERVICES**

Bryce Hall  
M. 027 282 2057  
Ph. 865 9714

Reglaze // Repairs // Maintenance  
Retro Fit Double Glaze

whangamatawindowdoorservices@xtra.co.nz

## UPHOLSTERY

**WINDWOVEN UPHOLSTERY**

For all your upholstery needs  
• Home • Office • Boat • Caravan  
Available 6 days for your convenience  
Free quotes

07 865 8774  
021 066 5788

## HOME SERVICES



**YourLocal**  
NZ's Trusted Home Services

Avi@yourlocal.nz - www.yourlocal.nz - 022 534 5478

We specialise in

- Exterior house wash, windows, driveways, patios, decks, fences & roofs - Commercial, residential, rural, new builds & painters prep - Pests treatment (fumigation)
- Rodents & wasps - Chimney sweeping - Roof treatments

**BUSINESS FRANCHISE FOR SALE**

We cover Coromandel, Thames, Waihi, Waihi Beach, Whitianga, Whangamata

## CLOTHING

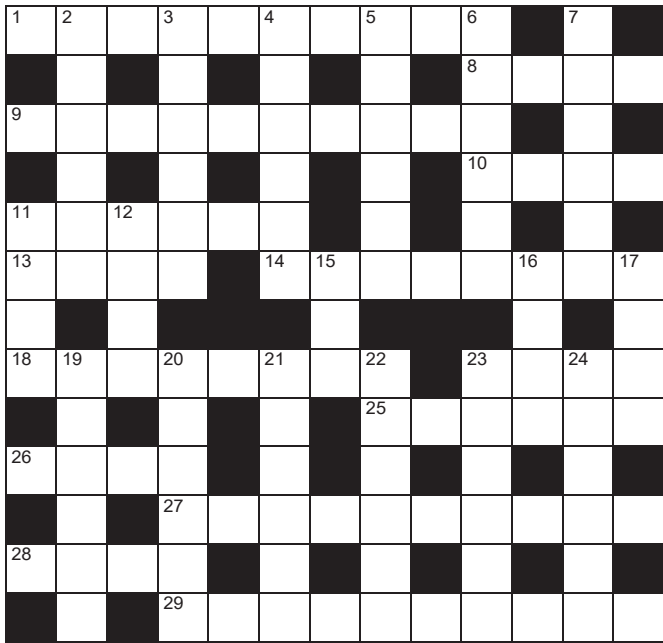
**YUKEYS**  
3620

Clothing Alterations and Repairs  
LADIES - MEN - CHILDRENSWEAR

Open Tuesday to Friday 8.30am to 1.30pm  
Saturday 9am to 12pm  
105 Aickin Road (just off Port Road)  
Whangamata  
M. 021 0289 3968



QUICK CROSSWORD



- Across**  
 1. Fading quickly (10)  
 8. Off course (4)  
 9. Random and unsystematic (10)  
 10. Stare (4)  
 11. Fondness (6)  
 13. Leave out (4)  
 14. Pollen allergy (3,5)  
 18. Solidly built (8)  
 23. Farm building (4)  
 25. Money holder (6)  
 26. Toy person (4)  
 27. Restriction (10)  
 28. Short note (4)  
 29. Deserving of the effort (10)
- Down**  
 2. Tricked person (6)  
 3. Fool (6)  
 4. Sledge (6)  
 5. Four score (6)  
 6. Confused mass (6)  
 7. Shop leisurely (6)  
 11. Attic (4)  
 12. NZ bird (4)  
 15. Copy (3)  
 16. Small medicine bottle (4)  
 17. Rave (4)  
 19. Rugby position (6)  
 20. Inexperienced, immature (6)  
 21. Bubble gently (6)  
 22. Jerk (6)  
 23. Unsightly mark (6)  
 24. Flinch (6)

SOLUTIONS

**SUDOKU**

5	9	3	2	3	9	1	4	7
1	4	8	9	3	7	8	5	2
7	8	2	1	5	4	6	9	3
3	7	8	6	1	2	4	9	5
6	1	5	3	4	9	2	7	8
4	2	9	7	8	5	3	1	6
9	5	7	8	2	1	6	3	4
8	3	1	4	9	6	5	2	7
2	6	4	5	7	3	1	8	9

**DECODER**

1	V	E	T	M	A	O	X	H	S	I	J	R	L	Y
2	A	S	P	I	C	E	F	E	R	U	N	G	L	K
3	W	A	T	E	R	S	O	N	A	P	E	S	W	B
4	P	A	S	T	A	S	T	A	S	T	A	S	T	A

**CRYPTIC**

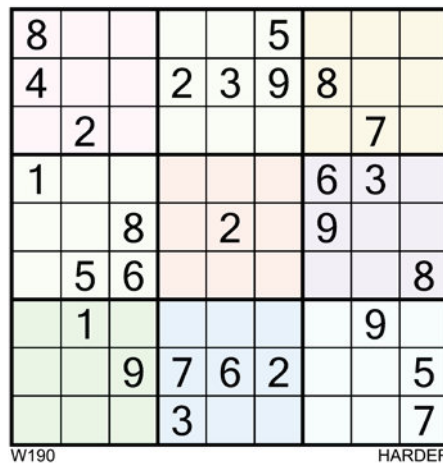
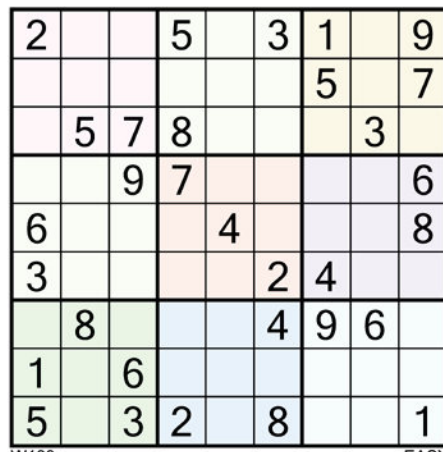
Across: 1. Exempt, 4. Pastor, 9. Jujuitsu, 10. Pylon, 11. Idyll, 12. Uncivil, 13. Substantive, 18. Chekhov, 20. Yahoo, 22. Asset, 23. Icepack, 24. Relish, 25. Afresh. Down: 1. Enjoy, 2. Enjoy, 3. Nettles, 5. Aspic, 6. Tel Aviv, 7. Rankle, 8. Jugular vein, 14. Utensil, 15. Thyself, 16. Eclair, 17. Hookah, 19. Hates, 21. Heave.

**CROSSWORD**

23. Blotch, 24. Recoil, 21. Simmer, 22. Twitch, 19. Hooker, 20. Callow, 16. Vial, 17. Rant, 12. Kiwi, 15. Ape, 7. Browse, 11. Loft, 5. Eighty, 6. Tangle, 3. Nitwit, 4. Sleigh, Down: 2. Victim, Memo, 29. Worthwhile, 27. Limitation, 28, 25. Wallet, 26. Doll, 18. Thickset, 23. Bam, 13. Omit, 14. Hay fever, 10. Gawk, 11. Liking, 8. Awry, 9. Scattergun, Across: 1. Evanescent,

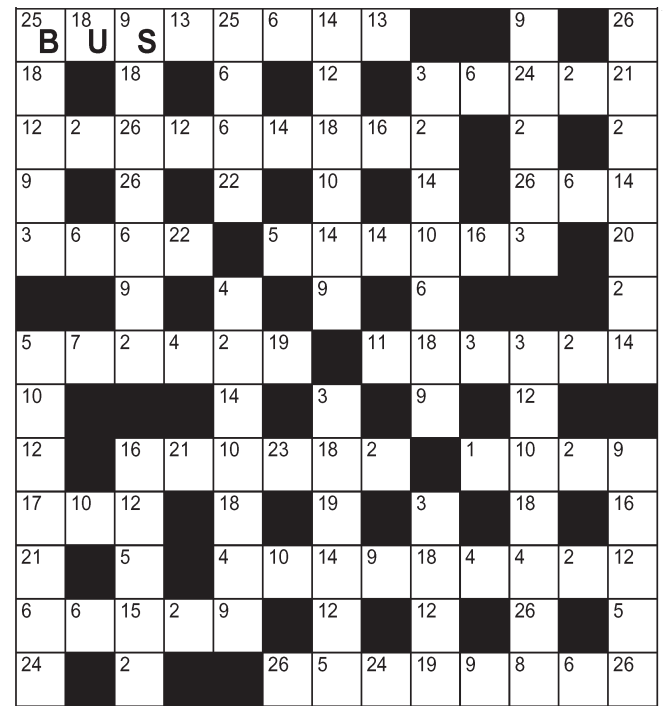
SUDOKU

Fill the grid so every row, column and 3x3 box contains the numbers 1-9



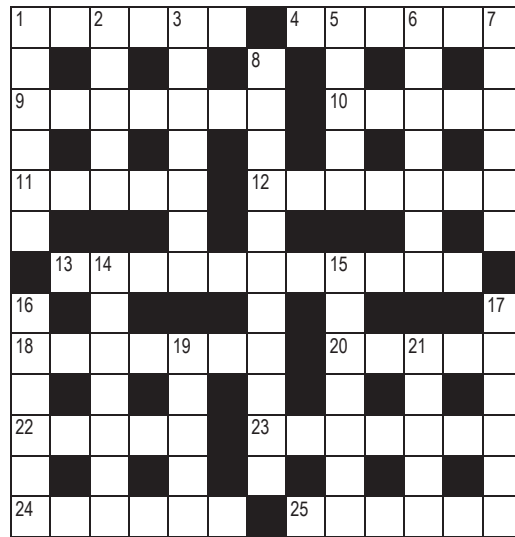
DECODER

Each number below represents a different letter. Find the correct letter for each number by working out the word from the letters given. To keep track, cross the letters off on the grid below.



A	B	C	D	E	F	G	H	I	J	K	L	M	N	O	P	Q	R	S	T	U	V	W	X	Y	Z
1	2	3	4	5	6	7	8	9	10	11	12	13						S							
14	15	16	17	18	19	20	21	22	23	24	25	26													
								U																B	

CRYPTIC CROSSWORD



- Across**  
 1. More than one Roman stages an exit (6)  
 4. Father's on hill, Father (6)  
 9. Japanese wrestling. Sounds like you could almost judge it, Sue (7)  
 10. Wires are heaped on it we hear (5)  
 11. Poetically descriptive about lily around the first of day (5)  
 12. Not very nice in an overrun civilisation (7)  
 13. Native tub's about? Could be in this sort of independent existence (11)  
 18. Russian writer Anton is reported to have sent payment away (7)  
 20. Hooray! Right out and about (5)  
 22. Possession of seats? (5)  
 23. Pick Ace to get a cold one. One for the chilly bin (7)  
 24. Enjoy a chutney (6)
- Down**  
 1. In France connect to prescribe (6)  
 2. Elation has bearings to find pleasure (5)  
 3. Annoys plants (7)  
 5. A spick and span jelly? Some of it could be (5)  
 6. Port from Israel? (7)  
 7. Lanker fruit might (6)  
 8. Spill of Ural vine jug contents would cause major artery problem (7,4)  
 14. Let us in for this implement (7)  
 15. Your old self (7)  
 16. Lacier cake? (6)  
 17. Sounds like a prostitute's pipe (6)  
 19. Dislikes in haste (5)  
 21. Pant lift (5)  
 25. How far she makes something anew (6)

All puzzles © The Puzzle Company

SMOKY PALLET

FREHOUSE



WHERE TO BE OVER SUMMER!

@Smokypalletwhanga

@Smokypallet