

Whangamatā & Waihi NEWS

ISSUE 166 – 22 MAY, 2026

FREE COPY

PLEASE TAKE ONE!

Prince of the Persimmon

Photo by Mark James

Vision a long time coming P8



Netball season flourishing P15



Cross Country triumphs P14



BY LOCALS, FOR LOCALS, ABOUT LOCALS.

WE WELCOME YOUR CONTRIBUTIONS!

Email WhangamataNews@gmail.com • Facebook [@whanganews](https://www.facebook.com/whanganews)

Taken home by bach owners and visitors to everywhere

SEE ALL OUR EDITIONS LIVE AT WWW.WHANGAMATANNEWS.NZ

EDITORIAL & MEDIA SALES:
JENNIE BLACK - 021 0232 1661

INDEPENDENTLY OWNED

DELIVERED TO WAIHI BEACH, WAIHI, WHIRITOA, WHANGAMATĀ, ONEMANA, HIKUAI, PAUANUI & TAIRUA

Stars that keep shining



Volunteers play a very important role in our community, they are the oil that keeps the big cogs turning and help make our town a better place to live. They are caring, kind and capable.

In each edition we will catch up with a volunteer and ask them a few questions.

This edition we welcome Errin Roigard from the Whangamata Community Services Trust.

Q How does the Community Services Trust benefit our town?

A The Trust provides an extensive range of services, including counselling, social work, family violence support, a foodbank, school holiday programmes, and a range of transport services.

Q What role do you play in the Community Services Trust?

A I'm a medical driver. I take people to hospital and clinic appointments for Xrays, MRI scans and ultrasounds. So far this year, I've completed 17 drives after carrying out 40 last year.

Q How long have you been volunteering here?

A My first connection with the

Trust began through Senior Concern, a programme that paired volunteers with elderly people for weekly visits and companionship. That was back in 2009, so yes, 17 years ago. I then progressed to the medical drives.

Q What do you enjoy most about contributing here at the Trust?

A The connection with the patients and the caring staff. It's just so rewarding. I have a regular group who contact me directly when they need transport, and then we book them in at the Community Services Trust office. I accompany my patients until their appointment is completed.

Q What would you say to encourage younger people to donate some of their time to the Trust?

A I would love to see more younger people volunteer, because it is so rewarding and it doesn't have to be a huge constraint on your time. The Community Services Trust plays such an important support role in our community and any little help we can get will go a long way.

Thanks Errin, you are a star.



Growing the economy through trade

New Zealand may be a small country at the bottom of the world, but trading with other nations is essential to our economy and our way of life. It's inspiring to consider that every day our primary producers are taking up the challenge to compete on the global stage.

As a Government, we have been focused on securing trade deals, because when New Zealand sells more to the world, Kiwi families are better off. Just look at the NZ-European Union Free Trade Agreement. Since coming into force two years ago it has already delivered strong results, with exports to the EU up more than \$3 billion. That growth means more money flowing back into New Zealand, which helps businesses invest, create jobs, lift wages, and put more money in people's back pockets.

Moreover, we recently signed a once-in-a-generation free trade

agreement with India. That opens the door for Kiwi businesses, farmers, and growers to access a market of 1.4 billion people in one of the world's fastest-growing economies. Commentators said it couldn't be done, but the Prime Minister kept his word and delivered.

The free trade agreement with India will see tariffs eliminated or reduced on 95 percent of our exports, with duty-free access on almost 57 percent of New Zealand's exports from day one. Essentially it gives producers access to an enormous global market where they can sell more of what they're great at, like kiwifruit, apples, lamb, fish, wine, wool, honey, and avocados.

Growing trade is the key to growing New Zealand's economy. Since coming into Government, exports have grown by more than \$17 billion. It's part of National's plan to fix the basics and build the future.

- Authorised by Scott Simpson MP, 614 Pollen St, Thames

Scott Simpson

MP for Coromandel

Contact me anytime
 0800 550 330 • scottsimpson.co.nz
mpcoromandel@parliament.govt.nz
[f](#) [scottsimpsonmp](#)

Authorised by Scott Simpson, Parliament Buildings, Wellington.

LIVE RUGBY
 Friday 29th May - 7:05pm - Hurricanes v Crusaders
 Saturday 30th May - 7:05pm - Blues v Chiefs
 Sunday 31st May - 8:15pm - Warriors v Panthers

LADIES

Night

WEDNESDAYS

MEMBERS HAPPY HOUR
 4.30PM - 7PM

ESPRESSO MARTINI'S, APEROL SPRITZ, MARGARITA'S

COCKTAILS SHAKEN
 BUBBLES POPPING
 WINE FLOWING

MID WINTER

CHRISTMAS

3 - course
Dinner

SATURDAY, 25 JULY
 &
 SUNDAY 26 JULY
 (LIVE MUSIC)

Let's celebrate together!

WHANGAMATA OCEAN SPORTS CLUB

P. 07 865 8704 • www.oceansports.co.nz • End of Port Rd at wharf [f](#) [@Whangamata-Ocean-Sports-Club-New-Page](#)

Aaron Vendel

SUNDAY 31ST MAY

Happy Hour
 3pm - 6pm
 + Aaron Vendel playing live

MEMBERS HAPPY HOUR
 4.30PM - 7PM

ESPRESSO MARTINI'S, APEROL SPRITZ, MARGARITA'S

COCKTAILS SHAKEN
 BUBBLES POPPING
 WINE FLOWING

MID WINTER

CHRISTMAS

3 - course
Dinner

SATURDAY, 25 JULY
 &
 SUNDAY 26 JULY
 (LIVE MUSIC)

Let's celebrate together!

Whangamata Police Report

Whangamatā Police were called out in the early hours of Tuesday 5th May to respond to a man burgling businesses at the Northern end of Port Road.

The burglar was smashing windows with a baseball bat and brazenly helping himself to tills and property from six businesses on Port Road. He fled the area a short time later in a vehicle and went to the Opoutere Camp Ground where he continued his spree taking a large amount of property, including tills and a safe amongst other items.

Police from the Paeroa and Morrinsville area also responded from the Southern side of Whangamatā and the offender was located driving towards the Waihi area. He elected not to stop for police. A pursuit was initiated which ended when the suspect crashed and was subsequently arrested without incident.

An 18-year-old man from Ōtāhuhu currently faces seven charges of burglary as well as a number of related driving charges. Whangamatā Police would like to thank the community for their assistance and sharp eyes in reporting this incident so the suspect could be apprehended.

We also acknowledge the businesses that were affected for their patience as we continue to return property and obtain CCTV footage. We ask if in future you see unfamiliar vehicles acting suspiciously, especially at night, you record their registration plates and call 105; if you see a burglary or similar underway the number to call remains 111.

Whangamatā remains a very safe and comfortable place to live and with your assistance we aim to keep it that way. Thank you Whangamatā.

- Senior Constable Jeff Waldron,
Whangamatā Police Station

Waihi Police Report

Two individuals have appeared before the courts following an aggravated robbery, after being swiftly apprehended by police. The arrests reflect excellent frontline work, with officers making a timely and effective catch — a reminder that while poor decisions may be quick, police responses are often quicker.

As the matter proceeds through the courts, police remain focused on community safety and holding offenders to account. This outcome would not be possible without the continued support and vigilance of the public, and we thank the community for working alongside police to keep Waihi safe.

With colder weather setting in, residents are encouraged to check in on neighbours, particularly the elderly or those living alone. A quick visit, phone call, or offer of assistance can go a long way during the winter months and helps keep our community connected and supported.

Police are also aware of ongoing issues of delinquent behaviour involving alcohol along the main street. Active steps are being taken to address this, with continued patrols and enforcement underway to bring the situation under control.

We appreciate the patience and cooperation of the community while this is being dealt with. Your ongoing support and willingness to report concerns play an



important role in keeping everyone safe.

If you witness any concerning or unlawful behaviour, or require urgent assistance, please call 111 immediately. Together, we can ensure Waihi remains a safe, supportive, and resilient community.

- Rachel Gillingham, Community Constable, Waihi / Waikato East

BOOF BOLAND
PAINTER & DECORATOR

P O Box 410, Whangamata 3643
M: 0274 367 254
E: jenboof@outlook.com

WHANGAMATA PATCH & QUILT

QUILT & TEXTILE ART SHOW

King's Birthday Weekend: **9am-4pm, 30-31 May**
Whangamatā Memorial Hall: **328 Port Road**

Featuring Guest Exhibitor: **Cherie Gurney**

Come visit many of your favourite merchants, including Pfaff and Bernina

Aotearoa Quilters Challenges

Raffles
Café on site
Quilts for sale

EFTPOS available
\$5 entry (kids free)

Victoria's Closet

NEXT TO WHANGAMATA PHARMACY OPEN FROM 10AM

Quality labelled pre-loved, new & near-new clothing, shoes & handbags
\$20 OFF ALL CLOTHING \$35 & OVER!

GARAGE SALE & QUALITY X SHOP STOCK FROM \$5
102 RANGITUIA ST
SATURDAY 30TH MAY ONLY – 8AM UNTIL 1PM



Coromandel deserves better than Auckland's mistake

Mayor Peter Revell has rightly flagged that 90 days is a tight timeframe to consider local government reform, and has promised the community will be brought along. Ratepayers should help him hold that line by looking hard at the Auckland evidence the Government is hoping we won't read.

Auckland Council claims \$2.4 billion in savings since 2010. The reality is less flattering. Household rates have risen 85 percent. Staff numbers are higher than before amalgamation. Local government academic Dr Andy Asquith concluded the super city failed to increase democratic engagement. And in 2022 the NZ Infrastructure Commission found that council size has no bearing on cost efficiency — bigger is not cheaper.

That is the model now being held up as our future. Waikato Regional Council is openly pushing for a single Hamilton-centred unitary authority stretching from Taupō to Thames. Such a super-council would govern Whangamatā from Hamilton, with our catchments, our coastline and our economy

reduced to a peripheral ward in someone else's planning document. The Coromandel's geography, environment and community of interest have never fitted a Hamilton-centric structure. Nothing has changed since TCDC said so in 2013.

There is a better path. Thames-Coromandel can submit a stand-alone proposal — or a sub-regional one with Hauraki — built around the Peninsula's actual catchments and communities. The Head Start rules explicitly allow proposals that don't cover an entire region. Smaller, accountable, locally answerable government is what residents have consistently said they want.

Mayor Revell has committed to open discussion on 26 May and to involving community boards and residents' associations. Ratepayers should take him at his word — and make sure the proposal that emerges is built around the Peninsula, not Hamilton's planning map.

— Patrick Kerr
Chair, Enterprise Whangamatā

TCDC Mayoral statement on local government reforms

Thames-Coromandel voices will be heard in local government reform process says Mayor Peter Revell.

The Government last week gave councils a timeframe of 90 days to consider reform proposals that would deliver "larger, more efficient unitary authorities that streamline functions, reduce duplication and improve decision-making".

Thames-Coromandel District Council Mayor Peter Revell says, "As of today we have 87 days to consider how our Council will respond to this challenge."

Mayor Revell says while he and his colleagues support the moves toward cost savings and efficiencies in local government, and are willing to positively address this timeline, the Council will still ensure there is adequate opportunity for all voices to contribute to any reform proposal that emerges.

On 26 May, at the first Council meeting since the Government's announcement, a paper on how the Council will approach the reform proposal will be fully discussed in the open agenda.

"In my view, the Government has set a timeframe and as your elected representatives we need to consider all options before us and meet the timeframe asked of us. We are committed to do this in a

way that ensures the community is aware of these options. This means community boards and community organisations - such as residents and business associations - will have the opportunity to assist the Council in formulating its response."

Mayor Revell says even though councils have been advised that they will have the opportunity to consult with communities before final decisions are made by Cabinet in May 2027 - "this is still a very tight timeframe for the people of the Coromandel to contribute to this conversation".

"We have to be completely open and transparent through this process and are committed to ensuring this happens for the people of our district.

"It is one thing for us to draw some lines on a map with our council neighbours to meet a Government-imposed deadline. But it is quite a different thing to put anything forward as a formal proposal without bringing the Thames-Coromandel community along with us."

More information on the Government's local government reform proposals is on the Department of Internal Affairs website.

— TCDC

LIVE YOUR BEST LIFE



Moana House offers Serviced Apartments

Independent 1 bed apartment with garden access and parking at your door. On site **Moana House facility** provides **Rest Home** and **Hospital level** of care.

Join in our activities, take a trip on our bus rides. Or walk around our beautifully kept gardens. These serviced apartments offer a range of services we can deliver to your door.

For more information and a friendly chat, about your needs and options call us on 07 865 9643.

Deborah Padfield (General Manager)
353 Tairua Road, Whangamatā
07 865 9643

MOANA HOUSE & VILLAGE

He whare ahuru — a caring safe place

Young explorers meet the challenge



On May 6th and 7th, twelve students from Whangamatā Area School headed to Waihi Beach and Cave Bay, where we completed the exploration part of our Duke of Edinburgh Award. Over those two days, we pushed ourselves, enjoyed the outdoors, and made unforgettable memories.

At the beach, we learned about marine life and the surrounding environment. While exploring, one of our teammates spotted a large piece of woven plastic amongst

the sand and we all immediately got stuck in trying to unbury it. The small win of finally getting it out heightened the positive atmosphere. We then carried on picking up small pieces of litter like fish nets and ropes which helped keep the area clean and protected local wildlife like crabs and octopi. Instead of just tossing everything away, we turned some of the trash into fun group activities, such as tug of war and jump rope challenges. These activities led to a lot of laughter, teamwork and competition.

During the trip, we realised how important good teamwork and communication was when working as a group. We supported each other with every activity and formed friendships with people we might not have talked to much before the trip. Some of the best memories came during our downtime. We played games, did Just Dance and spent time together in the pool. The experience brought everyone closer whether we were helping each other during planning, exploring the beach, or just hanging out.

I highly encourage other students to join the Duke of Edinburgh Award because it is not just about completing challenges, it's about the friendships, experiences, and the personal growth that comes with it.

A huge thank you goes to teachers Vicky Bradshaw and Katrina Brickwood for their support, encouragement, and guidance throughout the journey.

- Averie Robson, Year 10 student



Join Us AT THE **WHANGAMATA CLUB**





GERRY LEE
Saturday 23rd May
6:30pm

LIVE AT THE WHANGAMATA CLUB

KING'S BIRTHDAY ENTERTAINMENT



RUDE INTRUSION LIVE

SAT MAY 30
WHANGAMATA CLUB - FROM 7.00 PM



GERRY LEE
Saturday 31st May
6:30pm

LIVE AT THE WHANGAMATA CLUB

OPEN DAILY FROM 11AM

BISTRO
Monday - Friday from 3pm
Saturday & Sunday from 12pm

DINNER MENU
From 5pm daily

RESTAURANT
Friday to Sunday from 5:30pm

404 PORT ROAD

FACEBOOK.COM/THEWHANGACLUB

WWW.WHANGAMATACLUB.CO.NZ

P. 07 865 8705

OceanaGold portal blessing and dedication

OceanaGold staff, contractors, and invited guests joined Company President and CEO Gerard Bond on Wednesday, 13 May at a pre-dawn blessing and dedication of the Wharekirauponga underground mine, part of the Waihi North Project.

Standing at the portal, Bond said that the Waihi North Project is a key part of OceanaGold's operations. "This project was approved in December 2025 through the Fast-track pathway, with construction already now well underway. As you can see, tunnelling has started. We said we were 'shovel ready' and today we are demonstrating that."

"Waihi North shows that Fast-track can work as intended, allowing well designed, environmentally responsible projects to cut through unnecessarily complex regulatory processes, while maintaining the high environmental standards expected of projects of this size and complexity."

At the blessing and dedication Bond thanked OceanaGold staff, contractors, and industry partners "who have worked tirelessly to get us to this point".

"To be standing with you here today is just phenomenal. This project is significant to OceanaGold. It's our largest, most meaningful, most significant capital investment of scale. It's also a vote of confidence



in the legislation, this project, and New Zealand - at a time when New Zealand needs export dollars and sustained employment."

Once producing, the Wharekirauponga Underground mine will generate over

NZ\$8 billion of export revenue for New Zealand (estimated at current gold prices). The Company plans to invest approximately NZ\$1 billion in the project with about 80% of this expenditure expected to be spent in New Zealand, including over 30% of that within the Hauraki District.

Bond says these are not abstract figures. "They translate into high-value employment, local businesses winning contracts, school enrolments, and families putting down roots."

- Supplied by OceanaGold



Whangamata Area School Art Department Presents

**NCEA
STUDENT
ART
EXHIBITION**

Edisons, Whangamata
Opening night: Friday 29th May 5.30-7.00pm
Sat 30th & Sun 31st 9.00am-4.00pm
GOLD COIN ENTRY
Showcasing works from NCEA
Level 1, 2 and 3
Art and Photography students

Kindly sponsored by **The Little Gallery**
TAIRUA & WHANGAMATA



Whangamata
SERVICE CENTRE

Auto SUPER SHOPPES
NZ's PREMIUM AUTOMOTIVE CENTRES

Full Mechanical Repairs, Lubrications and Services, WOFs, Tyres, Tune ups, Batteries, Wheel alignments, Diagnostics.
 Scan Tool.
 AA Breakdown services
 First Assistance Breakdown services

P. 07 865 9435 • 201 Aickin Road, Whangamata
M. 027 608 5770 • E. Info@autosupershoppewhangamata.co.nz

100% HOME

WHANGAMATA

WHANGAMATA

MAY MADNESS

SALE!

Huge Deals on Appliances, TVs, Heating & BBQs!

Panasonic



**NOW
\$685**

CRAZY PRICE!

**OVENS
FROM \$699**



**HOT
\$699**

HOT DEAL!

Panasonic

**Weber
Family Q**

ONLY \$999



Mitsubishi

**FRIDGES
FROM \$1299**



HURRY IN! WHILE STOCKS LAST!

DELIVERY WAIKATO • BOP • AUCKLAND

605 PORT ROAD, WHANGAMATA



Living the lifestyle, loving the choice...



**A Lifestyle Village in Thames on the Coromandel
2 BEDROOM VILLAS NOW AVAILABLE!**

All villas and apartments are within walking distance of Thames' shops, cafes, and walkways. The perfect location to enjoy your fun-filled retirement.



Our spacious villas provide you with plenty of warmth and light and garden patios to enjoy. There are a variety of layouts including 2 bedroom villas, and 2 bedrooms with a double garage. All residents enjoy the use of the Village Community Lodge and participation in all activities and amenities at your leisure.

Phone us to view by appointment!
Come and experience the difference!

ALL ENQUIRIES WELCOME, VIEW OUR VILLA OPTIONS TODAY!

82 Richmond St, Thames 0800 868 5484 richmondvillas.co.nz

A long time coming for 'shared purpose'



The vision for the Whangamatā Marae and Wellbeing Hub last Sunday saw a strong and interested public turnout at the meeting and the release of concept plans.

Warmly welcomed to the presentation by Ryan Thompson, Chair and Project Manager, he explained "the vision has been that of many, many years and a lot of hard work finally comes to life." The management of the site at 101 Lindsay Road sits with the Governance Board, members of the Board are Helen McCabe, Graeme Smith, Peter Priest and Ricky Fisher. The project brings together a unique partnership of organisations, including the Whangamatā Community Marae Trust, Eastern Coromandel Community Services Trust, Whangamata Resource Recovery Trust, Whangamata Arts Collective, Menzshed and Lions Whangamata.

The vision first started in the 70's, the timeline is extensive, with the Council voting and accepting the business case for the lease of land at 101 Lindsay Road in February 2024, followed in August 2024 with council agreeing to the lease of 4774 sqm, which followed with the completion of the location plan released to the public.

Since then, significant groundwork has been completed behind the scenes with various funding contributions.

Seeing the plans on the large screen was most exciting with a

U-shape layout, intentional and also impressive parking for bigger events, hosting schools, public and private functions. The flow for all groups sharing the facility gives all plenty of working area space and storage for ongoing growth. Each group can retain its own purpose, function in appropriate separation, walkways will give appropriate flow of activity.

A campus approach will ensure buildings are aligned and complementary, with the marae buildings to be tikanga led.

So how can you be involved? Follow the websites: www.101.org.nz and www.wcm.maori.nz

Total costs and figures are yet to be finalised as the design is developed, quantity surveying needs to be done, the resource application is underway and will be submitted in the coming months.

Come along to fundraising meetings, support events ongoing, feedback both good and bad are welcomed or have a chat with the organisers.

All entities associated with the project are also charged with identifying possible avenues for funding and communicating these to GM Ryan Thompson.

The presentation was concise, the plans absolutely outstanding and with all participation and willingness from our community we can share the long-term vision.

- Jennie Black

FLOORINGXTRA.CO.NZ

FLOORING TO SUIT YOUR STYLE

CARPET • VINYL • TIMBER • LAMINATE • RUGS

Phone or email us! We're measuring & laying! View samples instore!

WHANGAMATA FLOORING XTRA

Whangamata | 636 Port Road | 07 865 8562 | whangamata@flooringxtra.co.nz

Our Coromandel

News from Thames-Coromandel District Council



22 May 2026

Local Government reform announcement

Many in the community will have already heard about the government's latest announcement on reforming the local government sector.

Councils have until 9 August to submit a high-level proposal on joining with other councils to form unitary authorities that combine the functions of both local and regional councils.

Mayor Peter Revell says while he and his elected colleagues support the moves toward cost savings and efficiencies, our Council will still ensure there is opportunity for all voices to contribute to any



reform proposal that emerges.

The next step is for Council to discuss in public how the reform proposal will be approached. This will take place at the Council meeting on 26 May, and is open to the public in person or via our meeting livestream function on our website.

The report to Council on the government's reform proposals, and the option to watch the meeting livestream, will be available on our website at tcdc.govt.nz/meetings

WHAT'S HAPPENING OVER KING'S BIRTHDAY?



KERBSIDE COLLECTIONS AND TRANSFER STATIONS

Kerbside collections will be a day later than usual following the King's Birthday public holiday on Monday 1 June. For year-round kerbside collection calendars, check your local schedule at tcdc.govt.nz/bindays

Our seven refuse and recycling transfer stations are open daily from 8:30am-4:30pm, including King's Birthday. tcdc.govt.nz/rts



OFFICES | DISTRICT LIBRARIES

Our offices (including AA services) and district libraries will be closed on King's Birthday Monday 1 June. You can still reach us 24/7 at 07 868 0200 or customer.services@tcdc.govt.nz



THAMES POOL

Thames Centennial Pool will be closed on King's Birthday Monday 1 June, resuming normal hours on Tuesday 2 June. tcdc.govt.nz/pools



DOG RESTRICTIONS

Please keep your dog on a lead in urban areas such as town centres and roads. Look out for Council's traffic light signage and check the rules in your area at tcdc.govt.nz/dogownerguide



ALCOHOL BANS

An alcohol ban is in place over King's Birthday weekend from 4pm Friday 29 May to 4pm Monday 1 June. tcdc.govt.nz/alcoholcontrol

TOUGH CHOICES FOR LOWER RATES: FINAL DECISIONS NEAR

A big thank you to everyone who took time to share their views during our public feedback period for our proposed 2026/27 Annual Plan Tough choices for lower rates proposals.



We asked for feedback on four key trade-offs to help us lower the proposed rates increase. These were reducing mowing and garden maintenance, changing opening hours at some Refuse and Recycling Transfer Stations, increasing fees and introducing new charges and reducing selected rates remissions.

Our Council reviewed the feedback at its meeting on Tuesday 26 May and is scheduled to make final decisions on Tuesday 30 June. Watch this space for the latest updates and our final decisions: tcdc.govt.nz/AP2627

Stormwater Improvement Project update

The Whangamatā Stormwater Stakeholder Engagement team met earlier this month.



The team reviewed the progress of the completed Williamson Park Basin and the currently under construction Hetherington Road Stormwater pipeline upgrade. This was followed by the forward planning for capital works 2026 to 2030. The priorities for the Whangamatā community were discussed and the stormwater improvement options reviewed. The next meeting is scheduled for August 2026.

Find out more at tcdc.govt.nz/whangastormwater

CALLING ALL LOCAL BUSINESSES

If you own or manage a business in the Thames-Coromandel District, Thames-Coromandel District Council would love to hear from you.



Our Economic Development team is inviting local businesses to take part in a short annual survey to help us better understand the challenges you're facing, and what

conditions would help your businesses grow and thrive over the long term.

All completed surveys go in the draw to win one of three great prizes:

- a business advertising package on CFM
- \$150 petrol vouchers (two available)

Head online until midnight, Sunday 31 May 2026. tcdc.govt.nz/EDSurvey2026

VISITOR EMERGENCY GUIDES AVAILABLE

We've received feedback that some visitors to our district can feel confused or alarmed when they hear the local fire siren. In some other areas and countries, sirens can signal an evacuation due to tsunami or other emergencies, which is not the case here.

To support our Emergency Management Unit's work in building informed and resilient communities, we've developed new visitor-focused flyers that explain what local sirens mean, where to find trusted information, and what to do in an emergency. These are designed to help visitors feel informed and avoid unnecessary panic.

The flyers are now available on our website for download and printing via tcdc.govt.nz/EMvisitorguide



OUR NEXT WHANGAMATĀ COMMUNITY BOARD MEETING WILL BE 10AM TUESDAY 9 JUNE AT THE WHANGAMATĀ SERVICE CENTRE, 620 PORT RD

[@ThamesCoromandelDistrictCouncil](https://www.facebook.com/ThamesCoromandelDistrictCouncil)
[coromandel_tcdc](https://www.instagram.com/coromandel_tcdc)
 Get our free eNewsletters!
www.tcdc.govt.nz/subscribe

tcdc.govt.nz
customer.services@tcdc.govt.nz
 Private Bag, 515 Mackay St, Thames
 Phone: 07 868 0200

No off switch for lifeguards after big season

The red and yellow flags may be down for the season, but for Waihi Beach Lifeguard Services, there is no off switch for the members.

After another busy summer, the club has wrapped a season that brought together patrol service, rescues, lifeguard development, surf sport success, and major infrastructure progress.

Across the 2025-26 surf lifeguard patrol season, Waihi Beach lifeguards recorded 9 rescues, 14 assists to safety, 777 preventative actions, more than 26,000 safety interventions, 9 searches, 11 major first aids and 38 minor first aids. Behind each number sits a volunteer team committed to keeping locals and visitors safe.

Thanks to several supporters, we were able to erect the Bowentown Rescue Hub in time for the start of the regional lifeguard season. The lifeguards were able to store rescue and first-aid equipment on site, close to the beach patrol. Having tools, fuel, and gear on site reduced pack-down time and back-and-forth travel to the main clubhouse. The internal fit-out is still to be completed when funds are available, but once complete, the hub will shorten emergency response times and enhance capability at

Bowentown. This fit-for-purpose hub will provide search and rescue and multi-agency groups a base to work from.

It was also a standout season for Waihi Beach lifesaving surf sport. This programme helps develop fast and fit lifeguards. At the 2026 Aon New Zealand Surf Lifesaving Championships at Ōhope Beach, Waihi Beach athletes showcased their skills by competing against some of the country's best. Max Page claimed silver in the U15 Board Race, Max Morley achieved two top-10 finishes in the U17 Board and Ski finals, and Georgia Walter finished 7th overall in the U17 Board Race. The club also made finals in several team events, including Board Relay, Surf Teams, Ski Relay and Taplin Relay.

The Masters team also delivered a strong national performance, finishing 16th overall against much larger clubs. Christiaan Maarhuis had a standout championships, finishing first overall in his age group. The Masters Surf Teams also won gold, while the Double Ski combination claimed silver.

The surf boat crew also added another proud chapter to the season, with the Under 23 team bringing home silver in the short



Luke Butler - Lifeguard of the Year.

course. Three Waihi Beach surf lifeguards also competed at the bp New Zealand IRB Championships 2026 in Gisborne.

Community connection remained a strong part of the season. Junior Surf continued through a summer that tested everyone's flexibility, with local flooding and slips forcing some creative adjustments. The season included first competitions for many young athletes, support for local carnivals, and four days of outstanding racing at Oceans for the club's 10+ junior athletes, again bringing in several Waihi Beach podium finishes.

For Waihi Beach Lifeguard Services, sport is not separate from lifesaving. It is a pathway for new recruits and keeps current lifeguards fit, sharp and confident in the surf. It builds teamwork, resilience and the ocean awareness needed on patrol. Every training session and race helps strengthen the skills that matter when the club's lifeguards are called into action.

This synergy was reflected at the club's Annual Awards of Excellence, a night recognising the people

behind the patrol hours, rescues, coaching, training, events and quiet work that keeps the service running, as well as acknowledging sporting achievement. Key honours included Luke Butler, named Surf Lifeguard of the Year, Andrew Cochrane, named Volunteer of the Year, Millie Watson, who received the Taylor Bros Cup for Junior Lifeguard of the Year, Chloe Poulter was recognised as Patrol Captain of the Year, Chiara Woodford as Instructor of the Year, and the Rescue of the Year was awarded to Mitchell Robinson, Max Morley and one Coromandel Club lifeguard.

The club's supreme awards reflect the depth of talent and service across the club. Christiaan Maarhuis received the President's Cup and the Butler Family Trophy for effort, attitude and achievement in surf sport and lifeguarding, Byron McIntyre received the McLaughlin Shield for U19 Sports and Lifeguarding Volunteer, and Sharlene Manukau was named Patrol Support Lifeguard of the Year. The Spark Merit Shield - Most Improved Member - Sport and/or Lifeguarding went to a team this year, the "Four Men One Oar" Surf Boat Rowing Crew.

The awards also recognised the club's rookies, officials, IRB crew and drivers, and the many members whose contributions strengthen Waihi Beach Lifeguard Services season after season.

Waihi Beach Lifeguard Services is always looking for new recruits, supporters and returning members. Whether through Junior Surf, Rookie Lifeguards, patrol support, surf sport, coaching, officiating, fundraising or volunteering behind the scenes, there is a place for people of all ages and stages to get involved!

The flags may be down, but the work continues in the pool, on the water, in training and across the community. For Waihi Beach lifeguards, there really is no off switch.

- Waihi Beach Lifeguard Services
Photo by Alex Wilkins

HELP US GET MAKAI TO

JAPAN

7 - 16 OCTOBER 2026

T-SHIRT FUNDRAISER

MAKAI HAS BEEN SELECTED AS 1 OF ONLY 10 BOYS FROM HIS RUGBY TEAM TO TAKE PART IN AN EXCITING RUGBY EXCHANGE TRIP TO TOKYO, JAPAN. WE'RE WORKING HARD TO HELP MAKE THIS DREAM A REALITY AND WE'D LOVE YOUR SUPPORT.

💰 TOTAL TRIP COST: \$2,749

FOR A \$50 DONATION.

YOUR NAME WILL BE PROUDLY PRINTED ON A SPECIAL T-SHIRT THAT MAKAI WILL WEAR DURING HIS TRIP — A WALKING BILLBOARD OF APPRECIATION FOR EVERYONE WHO HELPED HIM GET TO JAPAN. EVERY CONTRIBUTION BRINGS HIM ONE STEP CLOSER TO THIS UNFORGETTABLE EXPERIENCE.

THANK YOU FOR SUPPORTING MAKAI'S JOURNEY! ❤️

BANKING DETAILS: THERESA NG WUN
38-9022-0562769-05
REF: FIRST & LAST NAME

Owens Flooring

We Have All Your Flooring Needs Covered

Flooring Sales & Installation • Domestic & Commercial

Carpets • Vinyls • Laminate & Timber Planking




Showroom: 5/57 Wilson Road at Waihi Beach
07 863 5723 / 027 233 7277
sales@owensflooring.co.nz • www.owensflooring.co.nz

Waihi NEWS

Foreign currencies offered as another service to locals

As a newly-appointed Travelex agent, Waihi Paper Plus and Toyworld is now authorised to sell foreign exchange to customers who are getting ready to travel overseas.

“We hope this new service we are offering will fill a bit of a void in the range of products and services on offer in Waihi,” says Stephan Bosman, who owns the business with his wife, Petra. “Customers can either order a wide selection of foreign currencies through the Travelex website and collect it from our store or they can come in and we can place the order for them. We will require to see customers’ passports for all transactions, and we are only able to accept cash and EFTPOS as payment, unfortunately no Paywave or credit cards.”

It will take approximately two business days from when an order was placed, for it to be delivered to Waihi Paper Plus and Toyworld. “A Travelex agency is a fitting addition to our NZ Post and Lotto agencies, and the JP services we offer in-store” says Stephan. “It’s obviously early days for us. We’ve done quite a bit of training, but we ask customers to be patient as we start to process transactions in real time.”

The business has also recently completed an upgrade of their Toyworld area, replaced some in-store signage and added two large images against the internal walls. “We’re now featuring an aerial photo of Waihi and a large print of an original painting of our building and the Rob Roy Hotel by well-known Waihi Beach artist, Graham Young,” says Stephan. “The aim is not only to showcase how proud we are to be part of the local community, but also to celebrate Waihi as ‘New Zealand’s Heart of Gold’.

“In our Toyworld area, we’ve had new carpet laid, replaced some shelving, added a lick of paint and rearranged the layout to make it easier for customers to access the products they’re after.”

Stephan and Petra used only local contractors for the upgrade work. “Like all local retailers, we are acutely aware of the importance of locals supporting locals,” says Stephan. “We genuinely appreciate all members of the wider Waihi area supporting us and, from our side, make it a priority to spend every dollar we can with local businesses.”

- Waihi Paper Plus, Toyworld, NZ Post and Lotto



PAY RATES EASY

USING PAYBLE

Pay your rates your way

Payble makes it simple

- ▶ View your property and water rates bills
- ▶ Choose a payment option that suits you best
- ▶ Manage payments easily in one place

SIGN UP TODAY!

1. Visit <https://pay.hauraki-dc.govt.nz/>
2. Enter your Assessment Number
3. Enter your Sign-up code*

*Get your sign-up code by dropping into an Information and support session, visiting one of our offices or calling us.

▶ **Find out more**

Come along to our information and support sessions at the Waihi Library and Service Centre, Paeroa Library and Ngātea Service Centre and Library between 10am-12pm on:

<p>May 2026</p> <p>Monday, 25 May</p> <p>Wednesday, 27 May</p> <p>Friday, 29 May</p>	<p>June 2026</p> <p>Tuesday, 2 June</p> <p>Thursday, 4 June</p> <p>Monday, 8 June</p> <p>Wednesday, 10 June</p> <p>Friday, 12 June</p> <p>Tuesday, 16 June</p> <p>Tuesday, 23 June</p> <p>Tuesday, 30 June</p>
---	---

▶ **Stay up to date**

Scan the QR code to find out more about Payble

www.hauraki-dc.govt.nz/payble

Waihi NEWS

Basketball booming in Waihi



Waihi has always had a proud basketball history, with generations of players growing up through a strong local basketball community. But over the years, we noticed the numbers beginning to decline — especially for girls in the sport. Rather than sit back and watch basketball fade away, we decided it was time to do something about it.

That's how the Waihi Junior Basketball Club was born.

Our goal is simple: grow basketball from the grassroots level and rebuild Waihi into the thriving basketball community it once was. We wanted to create opportunities for young people to learn, play, connect, and fall in love with the game.

When we first started, we had just 7-12 kids turning up. Fast forward a couple of years, and we now have between 70-80 young players involved — proof that basketball in Waihi is growing again, and that our tamariki are hungry for opportunities to play.

What makes our club special is the

people behind it. Our committee is made up of passionate locals from all walks of life who simply care about our community and our kids. From policing, teaching, coaching, entrepreneurship, mining, and community sport leadership, every person brings something unique to the table — but we all share the same vision: creating a positive, inclusive, and fun environment for our young ballers.

Current Committee Members:
 Sterling Huett - Chairperson
 Finlay Welch - Vice Chairperson
 Talia Welch - Treasurer
 Jessie O'Brien - Secretary
 Jazz O'Brien - Coach / Game Coordinator
 Jay Wood - Committee Member
 Sofie Cope - Supporter
 Teryn Ireland - Supporter

We are also incredibly grateful for the support from our local sponsors this year. A huge thank you to Elite Early Learning Centre, Waihi Sports & Cycles, Dynasty Property, Hutchins Engineering, and CoroVets for backing our club and believing in what we are building. Community



support like this makes a massive difference and allows us to continue creating opportunities for our young athletes.

As we continue to grow, we would love more support from the community. Whether it's coaching, helping behind the scenes, or

simply lending a hand, we welcome anyone who wants to be part of our basketball whānau.

The future of basketball in Waihi is looking bright — and we're only just getting started.

— Jess O'Brien, Waihi Junior Basketball Club. Photos by Mark James

We provide a wide range of services for your Companion Animals:

- 24 Hour Emergency Care
- Health Checks
- Vaccinations
- House Calls
- Puppy Preschool
- Dentistry
- In-House Blood Analysis
- Digital Xray
- Ultrasound
- General & Emergency Surgery
- Orthopaedic Surgery



Tairua Clinic:
1 Wharf Road, Tairua

Whangamata Clinic:
215 Aickin Road, Whangamata

Waihi Clinic:
10 Mueller St, Waihi

0800 267 683
 info@corovets.co.nz
 www.corovets.co.nz

Waihi NEWS

Skating very popular in Waihi

Inline skating for juniors, was an absolute blast last Tuesday at the Waihi Events Centre, so many laughs, falls and determination! Winter sports are well underway. Thanks to the many coaches who make it happen!

Photos by Mark James



Be Warm this Winter



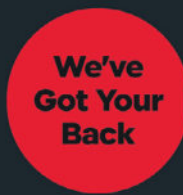
HEAT PUMPS



Discover the perfect harmony of efficiency and comfort with our wide range of heat pumps and air conditioners. Call in and see the team for FREE quotes, Interest FREE terms and the extensive range of Heat Pump solutions.

100% HOME WAIHI

24 ROSEMONT ROAD, WAIHI • PHONE 07 863 8207
email waihi100@xtra.co.nz • www.100percent.co.nz



We're always checking price Talk to us.



Waihi NEWS

Cross country tests endurance



Waimata School and Waihi College held cross country day with excellent participation. Great to see youngsters out there enjoying themselves and getting fit.

Photos by Mark James



TYRE HQ
WAIHI

WINTER READY SALE
4x4, SUV & CAR TYRES

MAX GRIP. MAX CONTROL.

KUMHO AT52 ALL-TERRAIN
NEW KUMHO RT RUGGED TERRAIN
KUMHO TA21 HIGHWAY ALL-SEASON

FULL RANGE OF BATTERIES IN STOCK!
✓ MARINE BATTERIES
✓ SUPERCHARGE BATTERIES

SEAMASTER
SUPERCHARGE BATTERIES
GoldPlus
MORE POWER. LONGER LIFE.

❄️ GET READY FOR WINTER DRIVING CONDITIONS

GOODRIDE Performance Tyres | **KUMHO TYRES** | afterpay

PRECISION WHEEL ALIGNMENT

07 863 9211 | www.tyrehq.co.nz

 **The Eye Place**

Formerly O'Hagan Vision Care

For all your eye care needs, including glaucoma checks, contact lenses, safety glasses & fashion frames.

Open Wednesdays & Fridays

www.eyepace.nz ☎ 07 865 0007 📍 612 Port Road



Waihi NEWS

Great vibes at Waihi netball

What a fantastic start to the 2026 season for Waihi Netball Centre!

This year, with a new committee leading the way, our focus has gone far beyond just the game itself. We have been working hard behind the scenes to strengthen every aspect of our centre — from building a strong Umpire Pathway Programme, and working with the Waikato Bay of Plenty Zone on implementing new policies and procedures.

Our goal is to cement strong foundations so that future committee members can seamlessly continue building on the work being done today. A huge amount of background work has already gone into ensuring we can continue providing quality netball opportunities for our community for years to come.

One of the biggest cultural shifts we are proud of has been the adoption of our “Positive Vibes Only” approach around our courts. Throughout the 2025 season, we noticed a huge positive turnaround in sideline behaviour compared to previous years. It has been wonderful to see parents, supporters, coaches, and players supporting not just their own teams, but opposing teams as well. The atmosphere around our courts has been uplifting, respectful, and enjoyable for everyone involved, and it is something we are incredibly proud to continue building on moving forward.



One of our proudest achievements so far has been our Umpire Pathway Programme, which has already seen 15 new umpires awarded, with another 5 set to receive theirs on the next playing night. That's 20 new umpires for the future of our game — an amazing milestone to celebrate!

Players, coaches, and supporters will also soon see the rollout of our new U18 umpire bands, along with incentive bands and awards as part of the programme to continue recognising and encouraging our

developing officials.

We are also incredibly proud to have rebuilt our representative programme, with Waihi Netball Centre now fielding five representative teams in 2026:

- 2 x Year 7 & 8 teams
- U14
- U16
- U18

Our teams are preparing for regional tournaments throughout the season, while our U16 representative team will proudly travel to Taranaki in July

to compete at Nationals.

A huge thank you also goes to PG Promo Morrinsville, who have generously sponsored a large percentage of our representative hoodies this season. Your support is greatly appreciated.

2026 Waihi Netball Centre Committee:

- Jess O'Brien - President / Draw Steward
- Gale Lambert - Vice President / TV Coordinator / Event Centre Coordinator
- Louisa Jespersen - Umpire Coordinator
- Tracy Taite-Grace - Treasurer / Secretary
- Teryn Ireland - future FERNES Coordinator / Child Safeguarding Officer
- Sofie Cope - Representative / Development Coordinator
- Brittany Durbin - Primary Schools Coordinator / Child Safeguarding Officer
- Kelli Purcell - Canteen Coordinator
- Sarah Young - Uniform Coordinator
- Davinia Te Huia - Whangamatā Representative

We are excited for what lies ahead and look forward to continuing to grow, strengthen, and positively shape netball within our community throughout the season.

- Jess O'Brien, Waihi Netball Centre



Whangamata Library confirms temporary location



The Whangamatā Library will reopen at a temporary location after Kings Birthday Weekend.

Library committee chairperson, Jacqui James, confirmed the corner of Port and Hunt Roads as the venue where library services will be provided until repairs are undertaken at the original site.

“With the assistance of Coromandel Insurance Services, we have access to 119 Hunt Road – we are currently working to relocate our services and

library books,” said Jacqui.

She said the new location, while smaller, would enable the library to provide most services to library members and users for a period of up to 12 months.

Library staff have already been sorting the books which will be available at the temporary location – others will be stored until the library moves back to its Port Road home.

Jacqui thanked library members and

users for their patience over recent weeks. Along with our librarians and volunteer staff working together we look forward to getting the temporary site operational.

She extended the library’s thanks and appreciation to Coromandel Insurance Services, the Whangamatā Community Board and Thames Coromandel District Council.

The aim is to have services available by Tuesday, 2 June.

Supermarkets testing ground for recycling technology

New World & PAK’nSAVE supermarkets are starting a five-month trial of a new soft plastics compacting system that customers can use in-store, aimed at making recycling easier and reducing the workload on store teams.

The trial is being run in partnership with The Packaging Forum’s Soft Plastic Recycling Scheme and Manco Environmental.

The machine has been designed and built in New Zealand by Manco Environmental and is the first front-of-house soft plastics compactor of its kind globally.

The machines will be trialled at five stores across the country: New World Whangamatā; New World Whitianga; PAK’nSAVE Thames; New World Birkenhead; and New World Matamata.

Foodstuffs Sustainable Packaging Lead, Debra Goulding, says customers are committed to recycling soft plastics through New World and PAK’nSAVE stores, but the current bin and bag system can be tough to manage in stores with high return volumes, especially where back-of-store space is limited or stores are in remote areas.

“Customers love being able to recycle their soft plastics, and we want to keep offering that,” says Goulding.

“But it’s a very hands-on process behind the scenes. Teams can be emptying bins multiple times a day, sorting contamination, compacting plastic and organising collections.



Ricky Bowen (NW Whangamata), Scott Simpson (local MP), Debra Goulding (Foodstuffs) and Kerry Stanley (NW Whangamata).

The new machines are designed for commercial use and can be used directly by customers in-store, while reducing the amount of handling required by the store’s team members.

“They can hold up to five times more plastic than a standard soft plastic recycling bins and compact it into sealed liners ready for collection. That means fewer collections and less time spent managing it.

“Because it’s customer-facing, it also makes the recycling process clearer and easier to use, which should help reduce contamination.

“What makes this different is that it’s front-of-house and designed for customers to use, rather than something tucked away out the back. That’s what makes it a first of its kind.”

Three Coromandel stores are part

of the trial, reflecting the added pressure in that region.

“They collect high volumes, but they’re also off the beaten track, so transport costs add up quickly,” says Goulding.

“This trial will help us see whether this kind of setup can take some of that pressure off.

“There’s also interest from offshore. Programmes in places like Australia and the UK are watching closely to see how this performs with customers in a retail store.”

New World Whangamatā owner-operator, Ricky Bowen, says the trial is a practical step forward for stores.

“Our customers are really engaged with soft plastics recycling, and we see a lot coming back through the doors,” says Bowen.



Local MP Scott Simpson tests out the new machine.

“But managing it takes time, especially making sure it’s clean and ready to go. If we can make that simpler, it makes a real difference for the team and keeps the service going for customers.”

The machines are fully enclosed and designed specifically for soft plastics, giving customers a clear, dedicated place to recycle and helping reduce contamination compared to standard collection bins.

The five-month trial will assess whether customers use the machines correctly and whether they reduce the operational load on store teams.

“We’re testing whether this is a better way to do it,” says Goulding.

“If it works for customers and makes life easier for our teams, we’ll look at where to next.”

Government to shield polluters from climate accountability

The Government’s proposed amendments to the Climate Change Response Act would weaken climate accountability and restrict the ability of New Zealanders to challenge major polluters through the courts, says Green Party candidate for Coromandel Pamela Grealey.

“The proposed law changes appear designed to shut down climate litigation already before the courts and make it harder to hold both government and major emitters accountable for the climate damage caused by their actions.”

“The fact that these changes could benefit some of New Zealand’s largest polluters while communities are already dealing with worsening climate impacts is deeply concerning.”

Pamela Grealey says communities across the Coromandel electorate are already experiencing flooding, slips, coastal erosion, storm damage, and growing pressure on infrastructure and local economies.

“The Coromandel electorate stretches from peninsula communities through the Hauraki

Plains, around the Firth, and into the western Bay. People across our electorate understand the real-world cost of climate disruption.”

The proposed amendments would reduce consultation requirements, weaken the role of the Climate Change Commission, and limit legal avenues for climate accountability.

“The Government is calling this ‘efficiency’, but reducing scrutiny and limiting public participation is not good governance.”

“Our communities have a

long history of standing up to environmental harm and protecting whenua, waterways, coastlines, and native ecosystems for future generations.”

“Climate policy should be science-based, transparent, and accountable to the public.”

“These proposed changes deserve full public scrutiny through a proper select committee process, not a rushed rewrite that weakens accountability.”

– Green Party Media Release

Waihi stopped the Mercury rising

On a clear and sunny day Waihi Senior A's took on Mercury Bay, always a fiery encounter and this one didn't disappoint the great crowd that turned up.

Waihi Head coach Mark McAlley felt the teams were quite similar, with both liking to spread the ball so there was a lot of action in play on Saturday. The referee apparently covered over 7km keeping up with the running styles both teams exhibited.

While McAlley had some concerns about the lineouts, plenty of attacking flair kept Waihi in the lead, with a kick and chase in the first two minutes resulting in a great try to set the tone. The whole game was played at pace with some excellent defense displayed by the home team ensuring they came away with a well deserved 36-14 win, to remain at the top of the table.



Next game is against Cobras, currently 2nd on the ladder so expect another big clash - go the Red and Blacks!

- Story & photos by Mark James, see more photos on Facebook



AN EPIC NIGHT FOR OUR CLUB!

29 MAY FROM 5.30PM

FEATURING **TIM MIKKELSON**
NZ SEVENS' MOST CAPPED PLAYER

SAVE THE DATE!
29 MAY FROM 5.30PM

WE LOOK FORWARD TO SEEING YOU THERE!




 We are thrilled to announce that Tim Mikkelson will be joining us. The former Waikato and Chiefs representative—and most notably, the New Zealand Sevens' most capped player—will be sharing insights from his stellar career and his enduring passion for club rugby.

 The evening is themed as a club night, so feel free to wear your club of origin jersey. Dig deep into the closet and dust it off!

 Light meal provided, bar open, plus raffles and an auction of one of Tim's NZ Sevens jerseys.

 Most importantly, our players will be presenting 2025 jersey sponsors with their jerseys, and we will be recognizing Brad Laurensen for his dedicated service to the club by presenting him with his milestone jersey.

Rippa rugby shines

On Saturday, our Whangamata Year 4 White team and our Year 5/6 team both played at home.

While both teams came away with losses, they played extremely well and showed fantastic determination and sportsmanship throughout their games.

We are now into the fourth week of junior rugby and currently have approximately 80 kids registered with the club. Our tackle teams are travelling all around the Valley on Saturday mornings, proudly representing our club in red and white.

Rippa Rugby is also thriving, with a great turnout of enthusiastic 3, 4 and 5 year olds. Josh and Maryanne Judd are doing an amazing job developing our up-and-coming red and white superstars.

I'm incredibly impressed with how positive and supportive the junior rugby environment has been this season. The encouragement from coaches, managers, whānau and supporters each week really highlights what grassroots rugby is all about.



Round 4 Waihi Junior Rugby saw another big weekend for our Red & Black Army as our teams headed out across the Valley and defended home turf! Y3 Waihi Black v Waihi Red, Y4 Black v Mercury Bay, Y4 Yellow v Tairua, Y5 Yellow v Hauraki.

It was also Sponsors Day at the club — a huge thank you to all our amazing sponsors who support our players, teams, and community throughout the season. We appreciate you all!

Photos by Mark James



COMING UP AT

SMOKY PALLET

F R E E H O U S E

Monday

Wednesday

Thursday

Friday

Sunday

6pm
QUIZ

**Poker
Night**

\$20 JUG N PIZZA

Ralph

**RALPH
4PM**

 @Smokypalletwhanga

 @Smokypallet

Artful insights



After a busy Easter Arts Trail, the Arts Collective are powering on with the planning for the Winter Workshop Series which includes a Phone Photography Workshop with Gail Stent - an international award winning photographer living here in Whangamatā.

In June, the Collective are promoting a Contemporary Portraiture Workshop which will appeal to those creatives inspired by a freestyle approach. Gel Painting with highly acclaimed guest presenters and for those budding poets and novelists, another Creative Writing Workshop is planned.

All workshops are open to beginners or more experienced artists, so don't hesitate, there are some fantastic art focused gatherings to look forward to over the cooler months, the atmosphere is always friendly, busy and lots of fun.

Dates are yet to be finalized and Arts Collective members are offered a discounted price for workshops, so join up now at www.artscollective.co.nz to receive our members newsletter and more information.

Moana House Lions project appreciated



A huge shout out to the wonderful Lions and volunteers who turned up for the working bee project on the five cottages needing a total refurbishment. The wonderful volunteers cleared the sites, gardens and completed all things needed to prepare for contractor to start the works, re roofing, re paintings and interior overhauls.

What an incredible community we live in, the call for help was answered, with very short notice, and now the cottages will be able to house much needed staff to care for our residents in their golden years.

Special mention from Debra Padfield, GM of Moana House, "thank you to Ralph Pitcher and the Lions group and all the community volunteers for their

hard work, and to Kevin Brookes for organizing and Marrius Lloyd for his support and guidance with the cottages".

— Jennie Black



Live your best life in *paradise*



Willson Gardens

offer **2 bed fully refurbished units** with internal garage within peaceful picturesque gardens

OR

Supported living in our **independent 1 bed apartment** with garden access and parking at your door.

On site **Moana House facility** provides **Rest Home** and **Hospital level** of care.

Contact us for more information on 07 865 9643

For more information, please phone (07) 865 9643
Deborah Padfield (General Manager)
353 Tairua Road, Whangamata

MOANA HOUSE & VILLAGE

He whare ahuru – a caring safe place



NEW LISTING



Whangamatā 1G/105 Aickin Road

Sell it now!

The vendors are motivated and ready to move, creating an exceptional opportunity for buyers wanting immediate access to one of New Zealand's premier coastal destinations. Delivering the ultimate "lock and leave" lifestyle. Park the cars securely in the two side-by-side carparks in the garage and simply walk everywhere. Set within a resort-style complex, the apartment enjoys access to the heated communal swimming pool and spa. The complex also offers superb security, onsite management, private storage and bike storage. Giving complete peace of mind, whether you are here for weekends, holidays or full-time living. The modern kitchen will impress. Are you searching for a holiday escape? A permanent residence? Or an investment opportunity to capitalise on Whangamatā's strong holiday accommodation market? This apartment ticks every box.

Affordable, secure and exceptionally well-located, this property is an outstanding opportunity.

bayleys.co.nz/2221637



Auction (unless sold prior) 11am, Thu 18 Jun 2026

96 Ulster Street, Hamilton

View by appointment

Gordon McGregor 021 998 810

gordon.mcgregor@bayleys.co.nz

Dale Sholson 021 636 519

dale.sholson@bayleys.co.nz

M H REALTY LIMITED, BAYLEYS, LICENSED UNDER THE REA ACT 2008



Whangamatā 209 Beach Road

Secure this harbourfront landmark

Designed for effortless living and sophisticated entertaining, the home presents in superb condition. Expansive open-plan living flows seamlessly to covered outdoor patios at both front and rear. Whether dining alfresco beside the outdoor fire or relaxing in the louvred courtyard alongside the spa pool. Originally constructed in 1970's, the home has since undergone extensive modernisation by Brian Walker Builders and thoughtful innovation by Diana Blake Design. A beautifully appointed kitchen anchors the living zone, complemented by quality finishes, a feature fireplace, underfloor heating in the bathrooms and a consistent sense of understated luxury throughout. Four bedrooms with the primary suite being a true retreat, complete with a walk-in wardrobe, ensuite, and direct access to the front deck. Practicality is well considered, with an oversized double internal-access garage, plus a separate high-stud boat shed and workshop. Quite simply, this is the harbourfront property to own.

bayleys.co.nz/2221588



Auction (unless sold prior) 11am, Thu 28 May 2026

96 Ulster Street, Hamilton

View by appointment

Dale Sholson 021 636 519

dale.sholson@bayleys.co.nz

Gordon McGregor 021 998 810

gordon.mcgregor@bayleys.co.nz

M H REALTY LIMITED, BAYLEYS, LICENSED UNDER THE REA ACT 2008

SALES AWARDS

Celebrating Success!



Congratulations to our top 3 salespeople!

- 1 Sharon Laurenson
- 2 Chris & Katie Speedy
- 3 Sarah Speedy

An incredible evening celebrating the achievements, dedication and success of our outstanding sales team. Congratulations to our top performers and thank you to everyone who helped make the night so special.

Thank you!

To the **SURF CLUB** for providing such a fantastic venue and **LUV COFFEE** for the delicious catering.



Whangamata Real Estate

WHANGAMATA REAL ESTATE 2024 LTD (LICENSED REAA 2008)



Whangamata Real Estate

WHANGAMATA REAL ESTATE 2024 LTD (LICENSED REAA 2008)

Don't just dream it, live it



DEADLINE SALE

Peaceful Estuary Position

103 Kotuku Street, Whangamata

3 🚗 2 🚗 2 🚗

Deadline Sale (unless sold prior) all offers considered 3pm, 10 June 2026

- Tucked away in the quiet and tightly held Kotuku Street
- Peaceful estuary location with water view
- Elevated 670sqm (more or less) freehold full site
- Single-level simplicity
- Sunny and private backyard with great outdoor living
- Spacious primary suite extension built in 2010
- Modern kitchen, open plan living
- Excellent double garaging with extra-height auto door

Check QR Code for viewing options



Sarah Speedy
M 027 843 4013
View Listing whanga.co/8629



\$995,000

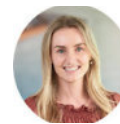
Hilltop Holidays

441 Onemana Drive, Onemana

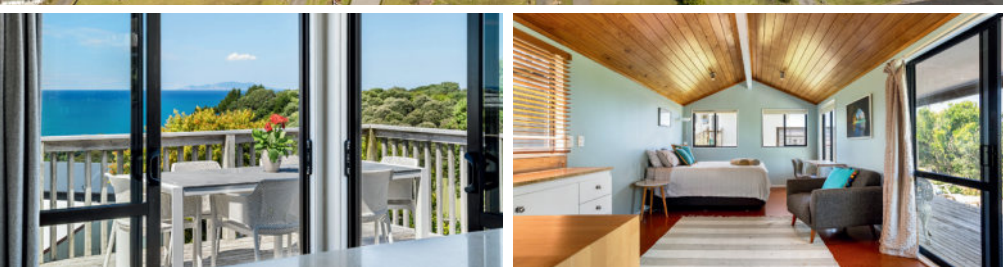
3+ 🚗 3 🚗

- Panoramic ocean, island and rural views
- Modern kitchen and bathroom
- Generous open plan living
- Cosy wood burner
- Two bedroom cottage
- Separate sleepout & cabin
- Multiple outdoor entertaining options
- Freehold 593sqm full site

Check QR Code for viewing options



Sarah Speedy
M 027 843 4013
View Listing whanga.co/8618



ENQUIRY OVER \$1,000,000

Coastal Classic with Views & Potential

101 Titiro Place, Onemana

4 🚗 2 🚗 3 🚗

- Wide views across Onemana Beach
- Well-maintained 1970's dwelling full of retro charm
- Large, home with great proportions & potential
- 3 car garaging options
- Sunny conservatory with lift
- Two deck areas
- 641sqm corner site - freehold title
- Great floor plan
- Two separate entry ways

Check QR Code for viewing options



Sarah Speedy
M 027 843 4013
View Listing whanga.co/8613





Whangamata Real Estate

WHANGAMATA REAL ESTATE 2024 LTD (LICENSED REAA 2008)

Don't just dream it, live it



DEADLINE SALE

Ocean Meets Design

517B Ocean Road, Whangamata

4 🚗 2 🚗 1 🚗

Deadline Sale (unless sold prior) all offers considered 3pm, 24 June 2026

- Views of Williamson Park, and ocean beyond
- Close proximity to beach, Surf Club and Blackies Cafe
- Designer kitchen well connected to outdoor decks and entertainment area
- Light and spacious with tasteful décor throughout
- Tiled bathrooms and underfloor heating
- Primary suite with access to deck, walk-in robe and luxury bathroom
- Lock and leave convenience



Check QR Code for viewing options



Sharon Laursen
M 027 662 3164
View Listing whanga.co/8635



ENQUIRY OVER \$1,450,000

Harbour & Mountain Vista

27 Herbert Drive, Whangamata

3 🚗 2 🚗 2 🚗

- Elevated north-facing property with dramatic upper harbour and bush views
- Extensive lawns and landscaped gardens
- Sun-soaked home filled with natural light
- Seamless indoor-outdoor flow to expansive decks
- Easy single-level living and internal access garage
- Generous primary suite with direct deck access
- Ensuite and step-in wardrobe
- A variety of established fruit trees
- Ample level off street parking for boats or motorhome parking



Check QR Code for viewing options



Sharon Laursen
M 027 662 3164
View Listing whanga.co/8638



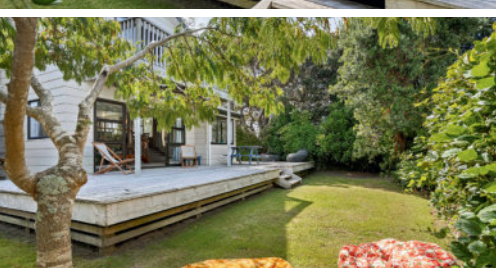
ENQUIRY OVER \$1,175,000

Family Beach Retreat

230B Rangi Avenue, Whangamata

3 🚗 2 🚗 1 🚗

- Spacious 588sqm Freehold Title
- Located in popular Rangi Ave close to beach access
- Master bedroom with ensuite and private balcony
- Open plan living well connected to outdoors
- Expansive north / east facing deck and lawn
- Basement garage / workshop with ample storage
- Carport and off street parking
- Mature shade and fruit trees
- Handy to swimming, kayaking and leisurely walks
- A character holiday home or permanent abode



Check QR Code for viewing options



Sharon Laursen
M 027 662 3164
View Listing whanga.co/8623





Whangamata Real Estate

WHANGAMATA REAL ESTATE 2024 LTD (LICENSED REAA 2008)

Don't just dream it, live it



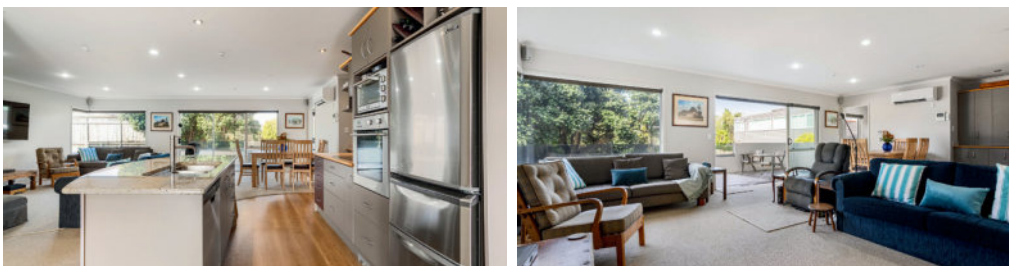
PRICE BY NEG

Coastal Living at its Best

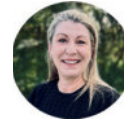
2/111 Hunt Road, Whangamata

3 🚗 2 🚗 2 🚗

- Spacious 3-bedroom, 2-bathroom apartment in a prime beachside location
- Open-plan kitchen, living and dining designed for modern living
- Generous master bedroom complete with ensuite
- Secure parking plus lift access for easy everyday living
- Short stroll to the beach, cafés, shops and town
- Low-maintenance lifestyle ideal for permanent living, holidays or investment



Check QR Code for viewing options



Lindsay Turnbull
M 027 423 8093
View Listing whanga.co/8630



PRICE BY NEG

Whanga's Best Buy

123B Mayfair Avenue, Whangamata

1 🚗

- Possibly Whangamata's most affordable holiday property
- No body corporate fees or restrictive rules
- Permitted bathroom with shower and separate WC
- Covered deck with outdoor blinds for all-weather use
- Two caravans included for extra family and guests
- Lots of room for cars, boats, jet skis



Check QR Code for viewing options



Andrew McGee & Lindsay Turnbull
M 021 135 5158 or 027 423 8093
View Listing whanga.co/8627



\$1,285,000

Relaxed Beachside Living

409 Tamaki Road, Whangamata

3 🚗 2 🚗 2 🚗

- Low-maintenance and superbly positioned
- A short stroll to the town centre and main beach
- Open-plan kitchen, dining, and living with seamless indoor-outdoor flow
- Sunny, private deck with shade awning
- Upstairs primary bedroom featuring a walk-through wardrobe and ensuite
- Downstairs includes two bedrooms and a bathroom
- Internal-access double garage – lined and carpeted



Check QR Code for viewing options



Chris & Katie Speedy
M 021 747 901 & 021 382 022
View Listing whanga.co/8607





Whangamata Real Estate

WHANGAMATA REAL ESTATE 2024 LTD (LICENSED REAA 2008)

Don't just dream it, live it



Welcome Home

111 Tobie Place, Whangamata

3+ 1 1

- Ideal family home with a lovely private outlook
- Spacious and sunny backyard
- Recently renovated kitchen and bathroom
- 914sqm section bordering a reserve

Check QR Code for viewing options



Sarah Speedy

M 027 843 4013

View Listing whanga.co/8609



Timber Charm & Easy Living

203 Tirohanga Drive, Whangamata

3 2 2

- Warm and sunny north-facing aspect
- Feature timber ceiling adding character and charm
- Primary bedroom with ensuite and balcony
- Wood burner and heat pump

Check QR Code for viewing options



Sarah Speedy

M 027 843 4013

View Listing whanga.co/8610



Easy Living on Everitt

135 Everitt Crescent, Whangamata

3 2 2

- Open-plan living and dining with a renovated kitchen
- Wood burner and heat pump
- Sunny north-facing veranda
- 614sqm (more or less) freehold site

Check QR Code for viewing options



Chris & Katie Speedy

M 021 747 901 or 021 382 022

View Listing whanga.co/8547



More Than You Expect

109 Te Tutu Street, Whangamata

3+ 2 2

- 3 bedrooms plus flexible 4th bedroom/office
- Expansive kitchen, open plan lounge and dining
- Nice flow to outdoors for entertaining
- Solar panels & Marshal heating system

Check QR Code for viewing options



Chris & Katie Speedy

M 021 747 901 or 021 382 022

View Listing whanga.co/8525



Classic Holiday Retreat

414 Otahu Road, Whangamata

1 1 2

- Open plan living opening onto usable deck area
- Positioned well for the sun
- Elevated and fully fenced site
- Easy access to the estuary and beach

Check QR Code for viewing options



Colin Thompson

M 021 723 723

View Listing whanga.co/8632



CLASSIFIEDS

PUBLIC NOTICES

Harbour Care AGM

The Harbour Care AGM will be held on Thursday 18th June 11am at the Whangamata Club.



Following the AGM, there will be a presentation from Regional Council and University scientists on current research into the Whangamata harbour and related research from other Coromandel harbours.

If you would like to join our committee, please contact us at harbourcare1999@gmail.com. Nomination forms must be received before June 8th.

GARAGE SALE

Garage and car boot sale

Saturday 30th May - King's birthday weekend.
Whangamata RSA. 9am-12pm
Over 20 individual sellers. Come and grab a bargain....

GARAGE SALE

**Cornerstone, 101 Ocean Rd
Saturday 30th May from 8am**

Club competition results

500 CARD CLUB

6 May: 24 players present.

Winner & Highest score: Reg Churton - \$20 voucher

Runner Up: Gavin Smith - \$10 voucher

Average score: Donna Lowrie

Lowest score: Chris Hepi - bar of chocolate

Raffle winner: Angie Dewhurst - \$25 New World voucher.

13 May: 24 players present.

Winner & Highest score: Steve Whitley - \$20 voucher

Runner Up: Chris Lipanovich - \$10 voucher

Average score: Gavin Smith - \$10 voucher

Lowest score: Peter Ryan - bar of chocolate

Raffle winner: Alan Cotter - \$25 New World voucher

WHANGAMATA CLUB MAHJONG

15 May: We had 49 players at the Whangamata Club for mahjong.

It was our Fun Friday for May and we had no goulash for the first session. We were not allowed to play the same hand more than twice today and we were allowed to pick our flower tiles from the discard tiles.

Congratulations to our winners.
1st: Julie Dennis, 46 points
2nd: Sandra Whitmore, 40 points
3rd: Daphne Inglis, 37 points (on count back)

The lucky number was 5 and it was not struck.

For your **graphic design needs**

Contact Anna Gledhill
whangamatanewsart@gmail.com

Designer for Whangamata & Waihi News



Whangamata Tides 2026

MAY 2026											
New Moon: 17 th						Full Moon: 2 nd					
Date	High tide	Height (m)	High tide	Height (m)	Low tide	Height (m)	Low tide	Height (m)	Sun rise	Sun set	
	AM		PM		AM	PM					
22	Fri	11:27	1.9		5:12	0.3	17:27	0.3	07:13	17:11	
23	Sat	11:59	2.0	12:24	1.9	6:09	0.4	18:24	0.4	07:14	17:10
24	Sun	0:55	2.0	13:22	1.8	7:05	0.4	19:21	0.4	07:14	17:09
25	Mon	1:51	1.9	14:21	1.8	8:02	0.4	20:20	0.5	07:15	17:09
26	Tue	2:45	1.9	15:19	1.8	8:58	0.5	21:19	0.5	07:16	17:08
27	Wed	3:38	1.8	16:15	1.8	9:52	0.5	22:15	0.6	07:17	17:08
28	Thu	4:29	1.8	17:07	1.8	10:44	0.5	23:07	0.6	07:17	17:07
29	Fri	5:17	1.8	17:56	1.8	11:33	0.4		0.5	07:18	17:07

JUNE 2026											
New Moon: 15 th						Full Moon: 30 th					
Date	High tide	Height (m)	High tide	Height (m)	Low tide	Height (m)	Low tide	Height (m)	Sun rise	Sun set	
	AM		PM		AM	PM					
1	Mon	7:30	1.8	20:05	1.8	1:25	0.6	13:41	0.4	07:20	17:05
2	Tue	8:12	1.7	20:45	1.8	2:07	0.6	14:20	0.4	07:21	17:05
3	Wed	8:52	1.7	21:25	1.8	2:48	0.6	14:58	0.4	07:22	17:05
4	Thu	9:33	1.7	22:05	1.8	3:28	0.6	15:37	0.5	07:22	17:04
5	Fri	10:14	1.7	22:46	1.8	4:09	0.6	16:16	0.5	07:23	17:04
6	Sat	10:56	1.7	23:27	1.8	4:51	0.6	16:58	0.5	07:24	17:04
7	Sun	11:40	1.7			5:35	0.5	17:42	0.5	07:24	17:04
8	Mon	0:11	1.8	12:27	1.7	6:20	0.5	18:30	0.5	07:25	17:03
9	Tue	0:56	1.8	13:17	1.7	7:07	0.5	19:21	0.5	07:25	17:03
10	Wed	1:45	1.8	14:12	1.7	7:58	0.5	20:16	0.5	07:26	17:03
11	Thu	2:36	1.8	15:10	1.8	8:52	0.4	21:14	0.5	07:26	17:03
12	Fri	3:30	1.9	16:10	1.8	9:48	0.4	22:14	0.5	07:27	17:03
13	Sat	4:27	1.9	17:10	1.9	10:45	0.3	23:13	0.4	07:27	17:03
14	Sun	5:26	1.9	18:08	2.0	11:42	0.2		0.3	07:28	17:03
15	Mon	6:25	1.9	19:06	2.0	0:13	0.4	12:39	0.2	07:28	17:03
16	Tue	7:24	2.0	20:02	2.1	1:11	0.3	13:34	0.1	07:28	17:03
17	Wed	8:22	2.0	20:57	2.1	2:08	0.3	14:28	0.1	07:29	17:03
18	Thu	9:18	2.0	21:51	2.1	3:04	0.3	15:21	0.2	07:29	17:03
19	Fri	10:14	2.0	22:44	2.1	4:00	0.3	16:14	0.2	07:30	17:03
20	Sat	11:09	1.9	23:37	2.0	4:54	0.3	17:08	0.3	07:30	17:03
21	Sun		1.9	12:03	1.9	5:47	0.3	18:01	0.4	07:30	17:03

Waihi Beach Tides 2026

MAY 2026											
New Moon: 17 th						Full Moon: 2 nd & 31 st					
Date	High tide	Height (m)	High tide	Height (m)	Low tide	Height (m)	Low tide	Height (m)	Sun rise	Sun set	
	AM		PM		AM	PM					
22	Fri	11:22	1.9		5:07	0.3	17:22	0.3	07:13	17:11	
23	Sat	11:54	2.0	12:19	1.9	6:04	0.4	18:19	0.4	07:14	17:10
24	Sun	0:50	2.0	13:17	1.8	7:00	0.4	19:16	0.4	07:14	17:09
25	Mon	1:46	1.9	14:16	1.8	7:57	0.4	20:15	0.5	07:15	17:09
26	Tue	2:40	1.9	15:14	1.8	8:53	0.5	21:14	0.5	07:16	17:08
27	Wed	3:33	1.8	16:10	1.8	9:47	0.5	22:10	0.6	07:17	17:08
28	Thu	4:24	1.8	17:02	1.8	10:39	0.5	23:02	0.6	07:17	17:07
29	Fri	5:12	1.8	17:51	1.8	11:28	0.4		0.5	07:18	17:07

JUNE 2026											
New Moon: 15 th						Full Moon: 30 th					
Date	High tide	Height (m)	High tide	Height (m)	Low tide	Height (m)	Low tide	Height (m)	Sun rise	Sun set	
	AM		PM		AM	PM					
1	Mon	7:25	1.8	20:00	1.8	1:20	0.6	13:36	0.4	07:20	17:05
2	Tue	8:07	1.7	20:40	1.8	2:02	0.6	14:15	0.4	07:21	17:05
3	Wed	8:47	1.7	21:20	1.8	2:43	0.6	14:53	0.4	07:22	17:05
4	Thu	9:28	1.7	22:00	1.8	3:23	0.6	15:32	0.5	07:22	17:04
5	Fri	10:09	1.7	22:41	1.8	4:04	0.6	16:11	0.5	07:23	17:04
6	Sat	10:51	1.7	23:22	1.8	4:46	0.6	16:53	0.5	07:24	17:04
7	Sun	11:35	1.7			5:30	0.5	17:37	0.5	07:24	17:04
8	Mon	0:06	1.8	12:22	1.7	6:15	0.5	18:25	0.5	07:25	17:03
9	Tue	0:51	1.8	13:12	1.7	7:02	0.5	19:16	0.5	07:25	17:03
10	Wed	1:40	1.8	14:07	1.7	7:53	0.5	20:11	0.5	07:26	17:03
11	Thu	2:31	1.8	15:05	1.8	8:47	0.4	21:09	0.5	07:26	17:03
12	Fri	3:25	1.9	16:05	1.8	9:43	0.4	22:09	0.5	07:27	17:03
13	Sat	4:22	1.9	17:05	1.9	10:40	0.3	23:08	0.4	07:27	17:03
14	Sun	5:21	1.9	18:03	2.0	11:37	0.2		0.3	07:28	17:03
15	Mon	6:20	1.9	19:01	2.0	0:08	0.4	12:34	0.2	07:28	17:03
16	Tue	7:19	2.0	19:57	2.1	1:06	0.3	13:29	0.1	07:28	17:03
17	Wed	8:17	2.0	20:52	2.1	2:03	0.3	14:23	0.1	07:29	17:03
18	Thu	9:13	2.0	21:46	2.1	2:59	0.3	15:16	0.2	07:29	17:03
19	Fri	10:09	2.0	22:39	2.1	3:55	0.3	16:09	0.2	07:30	17:03
20	Sat	11:04	1.9	23:32	2.0	4:49	0.3	17:03	0.3	07:30	17:03
21	Sun		1.9	11:58	1.9	5:42	0.3	17:56	0.4	07:30	17:03

Only the best WAIHI TRADIES will do! Use Locals... For Locals... Support Locals!

GLAZIER



Baker Glass & Glazing Ltd

- Glass Repairs
- Shower Glass
- Splashbacks
- Balustrades
- Retro-fit Double Glazing
- Insurance Quotes

Member AMN
Masterglaziers network
Proudly supported
by Metro Glass



Ph 021 514 497 | glass@bakerjoinery.co.nz

JOINERY



Baker Joinery Ltd

- Kitchen Refurbishment
- Bathroom Refurbishment
- Laundry Refurbishment
- Window Replacements Retro Fit

For All Small Projects & Renovations
07 863 8962 | info@bakerjoinery.co.nz
Show Room 46 Johnston St, Waihi
SHOW ROOM OPEN SATURDAYS

VETERINARY SERVICES




WAIHI 07 863 8684
WAIHI BEACH 07 863 7387

TYRE SERVICES



- Tyre Sales • Mag Wheel Sales
- Fitting & Balancing • Laser Wheel Alignment
- Motorcycle & Truck Balancing

ph: (07) 863 8555 32 Kenny Street
m: 027 303 1428 Waihi 3610
e: goldvalleytyres@gmail.com

TYRE SERVICES




Car, 4WD, truck, bus & tractor tyres
Tyre repair - Lease vehicles,
Wheel alignments & Mechanical,
All brands of tyres



Waihi Tyre Services
48 Rosemont Road, Waihi
07 863 7508 • waihiytyres@gmail.com

PLUMBER



- Certifying Plumbers and Drainlayers
- CCTV Drainage Inspections & Drain Unblocking
- Plumbing Maintenance & New Builds
- Gasfitting & servicing

• All Hot Water Cylinder Repairs and Replacements
For all your plumbing and drain laying needs.
Contact David Anderson 021927405 Waihi
0211996236 Tairua/Pauanui • office@inchitplumbing.nz

FLOORING



Flooring Sales and Installation
FREE MEASURE & QUOTATION

Carpet, Vinyl, Wood & Laminate Flooring
SHOWROOM: 5/57 Wilson Road, Waihi Beach
Open 8.30am-4.00pm Monday to Friday
Saturdays by Appointment

Phone: 027 233 7277 | 07 863 5723
sales@owensflooring.co.nz owensflooring.co.nz

RENTAL PROPERTY MANAGER



FRIENDLY. LOCAL. RELIABLE.
RENTAL PROPERTY MANAGER - WAIHI

Call today! Julie Cunningham
027 549 2427

pggwre.co.nz | PGG Wrightson Real Estate Limited,
licensed under the REAA 2008.

OP SHOP

WAIHI ST JOHN OP SHOP
Recruiting Now!



Make a difference
IN THE WAIHI COMMUNITY

**Are you a Customer Service Superstar?
Magic Merchandiser? Keen Handyman?**
We are currently recruiting
for a variety of roles across various
departments in our Waihi Op Shop.

If you're keen to volunteer, pop in and ask to
see Store Manager Sam for a chat, or call her
on 07 863 9274 to find out more!

3 Silvertown Road Waihi

PLASTERER

PLASTERER
FIX+STOP

PATCHES, repairs, new
builds, skim, renovations,
coving, wallpaper removal.
Ph or txt 022-4266-151.

DIGGER HIRE / LANDSCAPING



- LANDSCAPING
- AUGER DRILLING
- SOAK HOLES & SERVICING DRAIN LAYERS
- TILE LINES FOR SEPTIC TANKS
- HOLES DRILLED FOR ORCHARD PLANTING
- POLE & STEEL SHED FOOTINGS DRILLED

FREE QUOTES AVAILABLE
022 158 0234 • 2moonsdiggerhire@gmail.com

ARBORIST & FIREWOOD



Arboricultural Contractors

TREE PROBLEMS?
Dismantle, pruning, removal, stump grinding. BIG or SMALL – we do them ALL!
0274 390 367
www.shortbacknsides.co.nz

FIREWOOD
Available all year round. Smoking chunks or dust, kindling, bagged wood. Delivery available or pick up on Fridays from 15 Dean Cres, Waihi. Gold Card discounts. Also 100s of native and exotic milled slab timber, garden mulch, smoking wood.
0274 390 367 or our firewood hotline 022 043 1862



MARKET TREASURE



HEY YOU!
HAVE YOU HEARD WAIHI'S
BIGGEST SECRET?

UNDERGROUND MARKET
HEART OF WAIHI

Seddon St, Waihi | OPEN 7 DAYS 9am-4pm

Only the BEST TRADIES will do! Use Locals... For Locals... Support Locals!

SMALL ENGINE REPAIRS

ANTS REPAIRS

Whangamata-based small engine repairs & maintenance

- Chainsaws • Lawnmowers
- Ride ons • Weedeaters

Anthony Law
121 Sharyn Pl • 021 0244 2791
ants.repairs.nz@gmail.com

LANDSCAPING

Beach Contractors
& Landscape Supplies

LANDSCAPING SUPPLIES:

Bark, mulch, compost and topsoil	Sand, lime chip, river stones and pebbles	Cement, builder's mix and a range of metals
----------------------------------	---	---

Delivery service available

Whangamata Yard: 2546 Waihi Whangamata Rd, M. 027 261 1262
Waihi Beach Yard: 691 Waihi Beach Rd, P. 07 863 5340

LAND DEVELOPMENT

Birch
LAND DEVELOPMENT CONSULTANTS

Subdivisions
Boundary Markings
Land Use Consents Topographical Surveys
Building Setout and Certifications

Contact us
0508 4 BIRCH
tairua@birch.nz
244 Main Road, Tairua
www.birch.nz

EARTHWORKS

Blackhill
EARTHWORKS

- Bobcat & excavator
- Tight access work
- Site works
- Topsoiling
- Driveways
- Hole drilling
- Concrete prep
- Cartage

Shay 021 742 966 | www.blackhillearthworks.co.nz
info@blackhillearthworks.co.nz

IT SUPPORT

Boot it.

FIBRE INTERNET
now available to order from **Boot I.T.**

We are the Coromandel's only local Fibre Internet Provider, and the ONLY provider that offers 7 days per week support.

Call us on 0800 242 266 to find out more.

CONCRETE

BROWNMORE CONSTRUCTION
CONCRETE CONTRACTORS

Any Concrete Requirements: Slabs, driveways, patios, paths, etc
All types of concrete - colour - finish
Council Permits for Vehicle Crossings
Excavation to finished product • Saw cutting & drilling

We take pride in doing a quality job at a competitive rate

REX: 027 285 5489
P. 07 863 3364 • office@brownmoreconstruction.co.nz
www.brownmoreconstruction.co.nz

PAINTER & DECORATOR

Gavin Johnson
PAINTER & DECORATOR

Interior/Exterior Painting
Wallpapering
Cedar Cleaning and Restoration Service

0224 552 363
brushstrokeswhangamata@gmail.com

BRUSH STROKES
PAINTERS & DECORATORS
PH 0224 552 363 WHANGAMATA

DIGGER & CARTAGE

COAST DIGGER & CARTAGE

- Digger & Tip Truck Hire
- Driveways
- Building Digouts
- Site Works
- Concrete removal
- Track work
- Hole Drilling
- Tree Felling & Removal

Murray Clarke 027 2010 209
muzzclarke66@hotmail.com

HOME IMPROVEMENT

Coastal Home Improvement

Small business - local through & through

- Aluminium Fences, Pergolas & Structures
- Renovations
- Showers
- Laminate flooring
- Wooden Decks, Fences & Pergolas
- Projection and Track Awnings
- Repairs and more....Just ask

Tony Fraser 027 350 6948 CoastalHomeImprovement
coastalhomeimprovement@outlook.co.nz

PAINTER

Coastline Property Painters

Protecting your investment Communication is everything
Interior Exterior Roofs Updates & photos as your job progresses

Call Richard Upton: 0274 884 881 / www.coastlinepropertypainters.com

OUTDOOR COVER

Covered.

- Louvres
- Privacy Panels
- Awnings
- Sails

LOUVRESYSTEMS

info@covered.co.nz 07 865 6207 or 027 497 1236
www.covered.co.nz 300 Casement Rd. Whangamata

CURTAINS / BLINDS

Curtains and Blinds and More
Whangamata

LOCALLY OWNED AND OPERATED

- Curtains
- Venetian Blinds
- Roller Blinds
- Romans Blinds
- Shutters
- Honeycomb Blinds

100% Mobile Service
We come to you, Free Measure and Quote

Call Louize or Gavin
on 027 4777 916
or email info@curtainsandblinds.co.nz

FRAMING

FRAMESNZ

- Picture framing
- Framed mirrors
- Art installation
- Pick up & delivery

Ade Cunningham
M. 0274 929 695 or P. 07 575 9149
info@framesnz.co.nz • www.framesnz.co.nz
300 Port Rd (corner of Ajax Rd), Whangamata

SHUTTLE SERVICE

Find us on Facebook!

AIRPORT & PRIVATE SHUTTLE

- Door-to-door service.
- 11 pax + luggage. Spacious. Air-conditioned.
- Airports. Weddings. Sports Events.
- Outdoor Adventures.

Enquiries & bookings: gcadventures2026@gmail.com

Gareth & Gem
Body Work Gym

ADVERTISING

Whangamata & Waihi NEWS

By Locals, For Locals,
About Locals! Home delivered.

Call Jennie 021 0232 1661.



Use Only the Best Services in our Community! Use Locals... For Locals... Support Locals!

HANDYMAN

HANDYMAN

30 yrs experience, specialising in:

- Bathroom, deck & building repairs
- Gib fixing & plastering
- Interior /exterior painting

Please ring Rex on 021 997 428

BUILDING & LANDSCAPING

HBL HANSEN BUILDERZ BUILDING & LANDSCAPING

COMMITTED TO EXCELLENCE

Contact us to discuss your project & a free estimate today



ADRIAN 0274 263 895 | hansen.builderz@gmail.com | HBLHomesnz
Residential | Commercial | Alterations | Additions

ARCHITECTURAL BUILDERS

HOME & Lifestyle

- Architectural Builders
- Interior & Colour Design Services
- Project Management

For trusted expertise with your building project

Katrina Jackson 027 273 0685 | Leigh Goodman 027 4475 423
info@homeandlifestyle.co.nz

BUILDING WASHING

HOUSE WASH

Exterior house or commercial building wash, roof wash, fences, driveway, patios – soft-wash for best moss and lichen clean and treatment, exterior window cleaning, or general water blasting, 100m of hose so access is no problem.

Prompt local service with 22 years' experience.

Ph 0800 747 787 email atlasgroup@xtra.co.nz or dial Andy direct on 027 313 4386

CLEANING



we'll take care of it

- Carpet Cleaning
- Pest Control
- Flood & Fire Restoration
- Stain Removal
- Upholstery Cleaning



From Waihi to Whangamata
07 863 8358 or 0800 225 552
whangamata@jae.co.nz



AUTOMOTIVE & BOATS



BOAT TRAILERS, CARS, CLASSIC & HOT RODS

ONLY Repco STOCKIST IN TOWN!

ONLY HONDA AGENT IN TOWN!

Aickin Road, Whangamata (next to Bunnings)
P. 865 9073 | E. office@jcdcustoms.co.nz
Mon-Fri from 8am

CHILDCARE

Jemma's Homebased Childcare - Recruiting Now
Passionate about children & their learning?



- Work from home and make a real impact
- Free training & level 4 study
- Smaller group size/build stronger relationships
- Create learning experiences reflecting your values

Join our supportive whānau today!

Be part of a rewarding role where your work makes a difference

Call Jemma's: 0800 536 627

| info@jemmas.co.nz | www.jemmas.co.nz

CONCRETE SERVICES

KARTIN CONCRETE SOLUTIONS LTD

- Concrete Polishing
- Concrete Grinding
- Drilling & Cutting • Block Honing
- Sealing and Masonry Applications
- Licenced Sto Applicators

Email: info@kartinconcrete.co.nz
Phone: 0274 954 957

HOME BUILDERS

Whatever the site, we'll help you create the perfect home.

Jennian HOMES

614 Port Rd, Whangamatā E: coromandel@jennian.co.nz P: 07 865 6767



TRAVEL BROKER



Kay Gregan
The Travel Designer



AWARD-WINNING TAAZ BONDED TRAVEL BROKER
Travel Broker & CLIA Accredited Cruise Specialist
2025 Inaugural Brand USA Ambassador
Whangamata 07 865 9568 | M: 027 337 6222
Kay.Gregan@thetravelbrokers.co.nz
thetravelbrokers.co.nz/kaygregan

ELECTRICAL

For All Your Electrical Needs



Now Open In A Second Location
Introducing Laser Electrical Waihi

WAIHI 07 863 7746 WHANGAMATA 07 865 9309
waihi@laserelectrical.co.nz whangamata@laserelectrical.co.nz
40B Kenny Street 100 Lindsay Road

DELIVERERS WANTED

DELIVERERS WANTED IN WHANGAMATĀ



GET PAID TO GO FOR A WALK

Hottest delivery rate in town, \$20 per route at rate.

One delivery per fortnight with a 2-3 day window to deliver. Most routes take approximately 1 hour.

Whangamatā & Waihi NEWS

Contact Jennie Black 021 0232 1661 or email whangamataneews@gmail.com

Only the BEST TRADIES will do! Use Locals... For Locals... Support Locals!

LOUVRES

Engineered for Life
LouvreTec[®]
OPENING & RETRACT ROOFS
SUN LOUVRES / SHUTTERS
07 574 6040 office@louvretec.com
www.louvretec.co.nz
free no obligation quote & site visit

KITCHENS

McBeth Rd Orchard Joinery
Affordable joinery
Kitchens new or upgraded
Laundries & bathrooms
Wardrobes & storage units
Free estimates
Tony & Nicky Ball - 027 229 2255
Whangamata

BUTCHER

MEAT AT THE BEACH
Come into the local butcher and find:
BBQ meat, in store made sausages, patties,
tasty chops, steaks, butterflied chickens & much more.
'The home of Whanga bacon & Whanga Black Pudding'
601 PORT ROAD, WHANGAMATA P. 07 865 7241
MON-FRI 8.30AM-5PM • SAT 8.30AM-3PM

PODIATRY

Pedicare Services
Professional Foot Care
Alison Walkington
Registered Nurse
Home visits by
appointment
Mobile 027 663 2320 or
email alison.c.walkington@gmail.com

ELECTRICIAN

**GREG HENSTOCK
ELECTRICIAN LTD**
Registered Electrician
One Man Band
**WHANGAMATA
0272 580 366**

ELECTRICIAN

PITCHER ELECTRICAL
YOUR TRUSTED
MASTER ELECTRICIAN
working in Whangamata,
Opoutere, Onemana and
Whiritoa
**RESIDENTIAL AND
COMMERCIAL SERVICES**
TONY PITCHER 0274 589 573

PEST CONTROL

Professional Pest Management
Say goodbye to unwanted pests -
spiders, ants, wasps, cockroaches,
rodents & more!
We offer a safe, effective pest
management solution tailored to suit
your needs.
Contact us today for a pest-free home
or business. Locally owned & operated.
STEPHANIE FRITH - QUALIFIED TECHNICIAN
pestpros@outlook.co.nz | 027 3211 796 | www.pestpros.co.nz
Whangamata & Surrounds
A member of Pest Management Association of New Zealand

WINDOW CLEANING

pure n clean
Your ecofriendly window
cleaning service.
Mike Horton M 021 501 324
info@purenclean.co.nz www.purenclean.co.nz

HEAT PUMPS

Reef REFRIGERATION &
AIR CONDITIONING LTD
Stay comfortable all year round
• Heat Pump & Air Conditioning Specialists
• Expert Design & Maintenance
• Servicing & Preventive Maintenance
Trusted local expertise. Reliable Service.
Free, no-obligation quote.
Ph 07 865 9222 • contact@reefrigeration.co.nz

ROOFING

RIKKI ROOFING
we aim for the roof shout
Residential re roofs & new roofs
Spouting
Cladding
Maintenance & re screws
Rikki Daysh, Owner/Operator
022 408 8424
rikkisroofing@gmail.com

PLUMBER

Russell CHOAT
GAS & Plumbing
Whangamata
FOR ALL YOUR GAS-FITTING, PLUMBING,
DRAINAGE & ROOFING REQUIREMENTS
Registered craftsman & member
of Master Plumbers
M. 0274 714 869 E. office@choatsplumbing.co.nz

ELECTRICIAN / DOG GROOMER

Rusty Sparks
EVERYTHING
ELECTRICAL
Residential, Commercial,
Data, Alarms
@ 021 800 017
admin@rustysparks.nz
**PIMPED
PUPS
GROOM
ROOM**
@ 021 850 017
WHANGAMATA

WINDSCREEN REPAIRS

secureglass
For all your
windscreen
needs!
021 617 664
secureglassltd.co.nz

MONDAYS:
RSA car park, Whangamata
TUESDAYS:
Fresh Choice car park, Waihi
FRIDAYS:
Goldfields car park, Thames

ADVERTISING

**Whangamatā
& Waihi NEWS**
By Locals, For Locals,
About Locals! Home delivered.
Call Jennie 021 0232 1661.

Use Only the Best Services in our Community!

Use Locals... For Locals... Support Locals!

BUILDER



RESIDENTIAL SERVICES
LBP Builder / Renovation Specialist
07 865 6555 / 027 238 1659
skfrs@xtra.co.nz

BINS

Skip Bins, Wheelie Bins, Front Load Bins
Contact us today! *We can help!*



0800 4 MY BIN - www.smartbins.co.nz
Proudly 100% Kiwi owned

BOARDING KENNEL / CATTERY



SPOT X
BOARDING KENNELS AND CATTERY

Quality care and facilities in a rural setting
Office hours: 9am-12 noon and 3-5pm daily
INSPECTION WELCOME
Ph 07 865 8242 or 027 624 3890
Annette Gillatt
4km south of Whangamata on the main road

REFRIGERATION & AIR CON

TIDELINE REFRIGERATION
WHANGAMATA

- HEAT PUMPS
- REFRIGERATION
- AIR CONDITIONING
- VENTILATION

SERVICING IN THE COROMANDEL AREA
0272121994 - 0277251820
TIDELINEREFRIGERATION@GMAIL.COM
WWW.TIDELINEREFRIGERATION.COM

TREE SPECIALIST



- Tree felling & pruning
- Hedge trimming
- Stump grinding
- Fully insured
- Qualified arborist

TREECARE WHANGAMATA LTD
Contact 022 648 8150
treecarewhangamata@gmail.com

DIGGER HIRE / LANDSCAPING



2 MOONS DIGGER HIRE
EXCAVATION & AUGER DRILLING

LANDSCAPING
AUGER DRILLING
SOAK HOLES & SERVICING DRAIN LAYERS
TILE LINES FOR SEPTIC TANKS
HOLES DRILLED FOR ORCHARD PLANTING
POLE & STEEL SHED FOOTINGS DRILLED
FREE QUOTES AVAILABLE

022 158 0234 • 2moonsdiggerhire@gmail.com

LAWYERS

USSHER LAWYERS

We can help with all of your general legal needs

- Conveyancing if you are buying or selling property
- Sale and purchase of business assets • Commercial leasing
- Relationship property • Trusts • Wills • Enduring powers of attorney

www.ussherlawyers.co.nz | Phone 07 865 8824
We've moved - now at 123 Lindsay Rd, Whangamata

WARDROBES

WD WARDROBES DIRECT

Steve Parkinson
Central, East & South
021 0733 100
steve@wardrobesdirect.co.nz

ALSO SERVICING WHANGAMATA
www.wardrobesdirect.co.nz

Showroom and office:
175 Marua Rd
Mt Wellington

LAUNDRY

WHANGA LAUNDROMAT



The only locally owned & operated laundromat in town!
OPEN 24 HOURS - 7 DAYS A WEEK
CASEMENT RD, WHANGAMATA (OPPOSITE WAITOMO FUEL)

SCAFFOLDING



- Mobile scaffolding
- Roof edge protection
- Construction scaffold

Servicing Whangamata and surrounding areas

Please ring 022 076 0160 or email whangamatascaffolding@gmail.com
102 Lindsay Road, Whangamata Est 2014

TYRE & BATTERY SERVICES

WHANGAMATA TYRE & BATTERY



KUMHO TYRES 7

Car tyres / Wheel alignment
4WD tyres / Tyre repair
Wheel balance
Small implement tyres
Batteries - car & marine

Phone Simon 865 7698

CHALLENGE Cnr Port & Ocean Rd, Whangamata
www.challenge.net.nz

WINDOW & DOOR SERVICES

WHANGAMATA WINDOW & DOOR SERVICES

Bryce Hall
M. 027 282 2057
Ph. 865 9714

Reglaze // Repairs // Maintenance
Retro Fit Double Glaze

whangamatawindowdoorservices@xtra.co.nz

HOME SERVICES

YourLocal
NZ's Trusted Home Services

Avi@yourlocal.nz - www.yourlocal.nz - 022 534 5478

We specialise in

- Exterior house wash, windows, driveways, patios, decks, fences & roofs
- Commercial, residential, rural, new builds & painters prep
- Pests treatment (fumigation)
- Rodents & wasps
- Chimney sweeping
- Roof treatments

BUSINESS FRANCHISE FOR SALE

We cover Coromandel, Thames, Waihi, Waihi Beach, Whitianga, Whangamata

GRAPHIC DESIGN

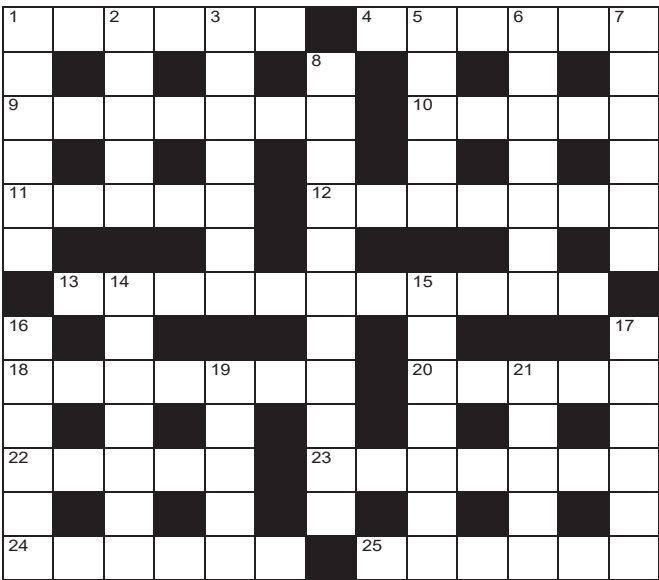
For your graphic design needs

Contact Anna Gledhill
whangamataneart@gmail.com

Designer for Whangamatā & Waihi News



QUICK CROSSWORD



- Across**
 1. Thrifty (6)
 4. Lowest rank of aristocrat (6)
 9. Deadlock (7)
 10. Precise (5)
 11. Fit of extravagance (5)
 12. Temporary relief (7)
 13. Alert, energetic type (colloq) (5,6)
 18. Turn aside (7)
 20. Tip over (5)
 22. Bring to mind (5)
 23. On the exterior (7)
 24. Being (6)
 25. Entry (6)
- Down**
 1. Insubstantial (6)
 2. Topmost (5)
 3. Plain in appearance (7)
 5. Requirements (5)
 6. Type of hard stone (7)
 7. Tie up (a horse) (6)
 8. Disapproval (11)
 14. Deliberate insult (7)
 15. Relating to water (7)
 16. Stick (6)
 17. Accentuate (6)
 19. Make a physical or mental effort (5)
 21. Grin (5)

All puzzles © The Puzzle Company

SOLUTIONS

SUDOKU

3	8	7	4	7	6	8	3	5
6	5	8	2	3	1	7	9	4
4	3	7	8	5	9	2	1	6
7	6	1	5	2	8	9	4	3
9	2	4	3	6	7	5	4	1
8	4	5	1	9	4	6	2	7
5	1	3	7	8	2	4	6	9
2	7	9	6	4	3	5	8	1

DECODER

1	O	E	F	J	U	S	G	Y	W	X	I	D	M
2	R	A	K	B	H	Z	N	L	C	O	V	T	P
3	1	2	3	4	5	6	7	8	9	10	11	12	13
4	1	2	3	4	5	6	7	8	9	10	11	12	13
5	1	2	3	4	5	6	7	8	9	10	11	12	13
6	1	2	3	4	5	6	7	8	9	10	11	12	13
7	1	2	3	4	5	6	7	8	9	10	11	12	13
8	1	2	3	4	5	6	7	8	9	10	11	12	13
9	1	2	3	4	5	6	7	8	9	10	11	12	13
10	1	2	3	4	5	6	7	8	9	10	11	12	13
11	1	2	3	4	5	6	7	8	9	10	11	12	13
12	1	2	3	4	5	6	7	8	9	10	11	12	13
13	1	2	3	4	5	6	7	8	9	10	11	12	13
14	1	2	3	4	5	6	7	8	9	10	11	12	13
15	1	2	3	4	5	6	7	8	9	10	11	12	13
16	1	2	3	4	5	6	7	8	9	10	11	12	13
17	1	2	3	4	5	6	7	8	9	10	11	12	13
18	1	2	3	4	5	6	7	8	9	10	11	12	13
19	1	2	3	4	5	6	7	8	9	10	11	12	13
20	1	2	3	4	5	6	7	8	9	10	11	12	13
21	1	2	3	4	5	6	7	8	9	10	11	12	13
22	1	2	3	4	5	6	7	8	9	10	11	12	13
23	1	2	3	4	5	6	7	8	9	10	11	12	13
24	1	2	3	4	5	6	7	8	9	10	11	12	13
25	1	2	3	4	5	6	7	8	9	10	11	12	13

CRYPTIC

- Across:**
 2. Free-for-all, 7. Afghanistan,
 9. Cartoon, 10. Spell, 11. Spoons, 12. Swoons,
 15. Swept, 17. Playpen, 19. Good natured,
 20. Battle royal,
Down:
 1. Franc, 2. Figure of eight, 3. Enamour,
 4. Friend, 5. Rates, 6. Lance corporal, 8. Dates,
 11. Sush, 13. Wealthy, 14. Opener, 16. Troll,
 18. Nudes.

CROSSWORD

21. Smile.
 17. Stress, 19. Exert,
 16. Adhere,
 15. Aquatic,
 14. Affront,
 9. 2. 4. 3. 4. 1. 8. 7. 6. 8. 3. 5.
 8. Reprobation,
 6. Granite, 7. Tether,
 5. Needs,
 2. Upper, 3. Austere,
Down:
 1. Filmy,
 24. Entity, 25. Access.
 23. Outside,
 22. Evoke,
 20. Upret,
 18. Deflect,
 13. Eager beaver,
 12. Respite,
 11. Spree,
 Impasse, 10. Exact,
 4. Knight, 9.
Across:
 1. Frugal,

Fill the grid so every row, column and 3x3 box contains the numbers 1-9

SUDOKU

| | | | | | | | | |
|---|---|---|---|---|---|---|---|---|
| | 7 | 6 | | | | | | 1 |
| 5 | 1 | | | 2 | | | | |
| | 4 | 6 | 9 | | | 3 | 7 | |
| 3 | 8 | | | 9 | | 6 | | |
| 9 | | | | 6 | | | | 8 |
| | | 1 | | 2 | | | 4 | 3 |
| | 3 | 7 | | | 9 | 2 | 1 | |
| | | | 2 | | | | 9 | 4 |
| 1 | | | | 6 | | | 3 | |

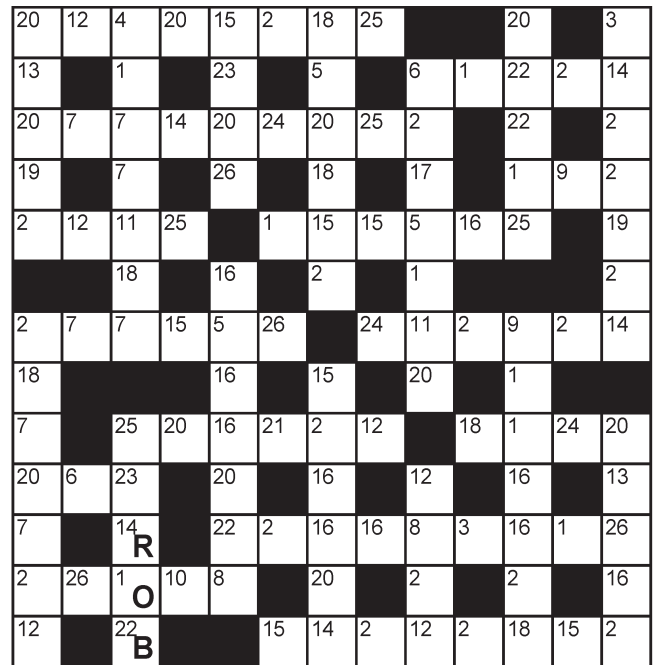
EASY

| | | | | | | | | |
|---|---|---|---|---|---|---|---|---|
| | | 6 | 5 | 3 | | | | |
| 8 | | 5 | 9 | | | | | 7 |
| | | 2 | 4 | 1 | | 8 | | |
| 7 | | | | 2 | | | 3 | |
| | | | | | | | | |
| | 9 | | | 5 | | | | 1 |
| | | 9 | | 8 | 3 | 4 | | |
| 6 | | | | | 9 | 2 | | 8 |
| | | | | 4 | 5 | 1 | | |

HARDER

DECODER

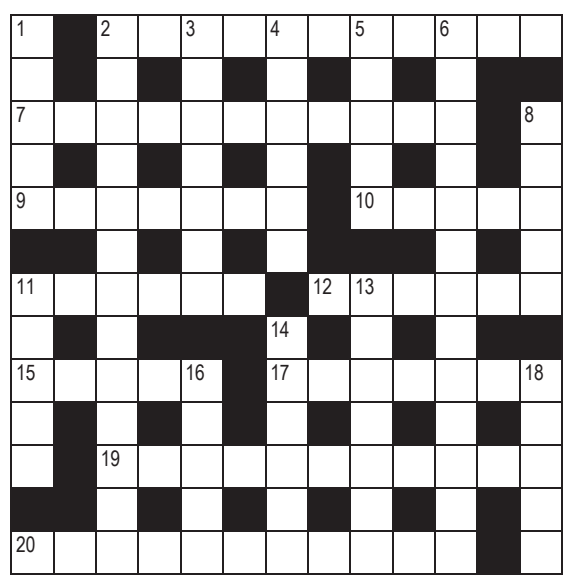
Each number below represents a different letter. Find the correct letter for each number by working out the word from the letters given. To keep track, cross the letters off on the grid below.



| A | B | C | D | E | F | G | H | I | J | K | L | M | N | O | P | Q | R | S | T | U | V | W | X | Y | Z |
|----|----|----|----|----|----|----|----|----|----|----|----|----|---|---|---|---|---|---|---|---|---|---|---|---|---|
| 1 | 2 | 3 | 4 | 5 | 6 | 7 | 8 | 9 | 10 | 11 | 12 | 13 | | | | | | | | | | | | | |
| O | | | | | | | | | | | | | | | | | | | | | | | | | |
| 14 | 15 | 16 | 17 | 18 | 19 | 20 | 21 | 22 | 23 | 24 | 25 | 26 | | | | | | | | | | | | | |
| R | | | | | | | | | | | | | | B | | | | | | | | | | | |

CRYPTIC CROSSWORD

- Across**
 2. Where people charge in but there's no charge out (4-3-4)
 7. Shortly, Stanley & I will get a dog from this country (11)
 9. A funny picture of vehicle hitting Chinese tree (7)
 10. Said purposefully each letter typed initially (5)
 11. They sound like cell tracks (6)
 12. She leaves her snowshoes and faints (6)
 15. No Ontario power station is cleaned (5)
 17. A pseudo writer found in child restraint (7)
 19. Outraged, Don surprisingly didn't lose his temper (4,7)
 20. Take Ray to ballet perhaps for a close match (6,5)
- Down**
 1. Rudolf ran carefully with the money (5)
 2. One fat lady skating? (6,2,5)
 3. Captivate with our name (7)
 4. The sort of ally you could end up with on a short day (6)
 5. Determines speeds (5)
 6. Is he in charge of the spears? (5,8)
 8. Goes out with a calendar girl? (5)
 11. A dish you may find in Japan's US hideaway (5)
 13. Law they break to have a lot of money (7)



14. The first in and 50:50 chance of being the first out of the game (6)
 16. Fish for a mythical being (5)
 18. Do they come with hang-ups? Barely! (5)

BUFFALO WINGS WEDNESDAY

ONLY \$1 EACH

DINE IN ONLY

from 4:30pm until sold out

Full sized buffalo wing for only \$1 per wing... Why would you wanna miss out on that?!

Pasta Thursday @ CRAFT HAUS

Any haus pasta WITH a pint off tap or glass of haus wine for ONLY \$24! Choose from Seafood, Beef or Gnocchi!!

available from 2:30pm

FRIDAY SHOUT

\$12.00 ea

PINTS - PIZZAS

WINES - COCKTAILS

2:30PM-5:30PM

DINE IN ONLY

SHELLFISH SATURDAY

ONLY \$25

Grab 1kg of greenlipped mussels w garlic bread + a pint of tap or glass of house wine

SCHNITTY SUNDAY

Choose from chicken or pork schnitzel served with fries, salad & gravy + a pint off tap or glass of haus wine

ONLY \$20.00

Dine in only

We highly recommend booking your table asap!! 07 865 6300 / manager@crafthauswhanga.co.nz

CRAFT HAUS
 Gastropub Est. 2022

711 Port Road, Whangamata
 @crafthauswhanga - www.crafthauswhanga.co.nz
 07 865 6300