

PARADISE COAST

Whangamatā NEWS

ISSUE 113 - 8 MARCH, 2024

FREE COPY
PLEASE TAKE ONE!

Estuary warrior tackles mangrove problem PAGE 11

Photo by Mark James - Whangamatā News



Repco Beach Hop 24 official magazine OUT NOW - PAGE 3



Pauanui En Blanc luncheon like no other - PAGE 10

BY LOCALS, FOR LOCALS, ABOUT LOCALS.

 LIKE US!

WE WELCOME YOUR CONTRIBUTIONS!
EMAIL WHANGAMATANNEWS@GMAIL.COM • FACEBOOK [@WHANGANNEWS](https://www.facebook.com/WHANGANNEWS)

SEE ALL OUR EDITIONS LIVE AT WWW.WHANGAMATANNEWS.NZ
EDITORIAL & MEDIA SALES:
JENNIE BLACK - 021 0232 1661

DELIVERED TO WAIHI, WHIRITOA, WHANGAMATĀ, ONEMANA, HIKUAI, PAUANUI & TAIRUA

Greater access to fibre for Coromandel communities

The planned expansion of ultra-fast fibre connectivity to more than 2,000 local homes and businesses is a huge step forward for the Coromandel, says Coromandel MP Scott Simpson.

“Chorus has announced the first significant expansion of New Zealand’s fibre network since the Ultra-Fast Broadband programme was completed in 2022.

“It means more of our local communities are set to benefit from greater connectivity.

“It’s part of a plan that will see some 10,000 properties around the country gaining access to fibre and it’s terrific to know that the Coromandel electorate is set to receive a significant proportion of this rollout.

“Pauanui, Wharekaho, Kuaotunu, Te Mata, Onemana, Little Bay, Opoutere, Kerepehi, and Whiritoa will soon be able to enjoy all the benefits that access to fast and reliable fibre internet brings .

“Work will begin in some communities later this year

and Chorus estimates the work programme will take 18 months to complete.

“In a world that has quickly digitised, access to fast and reliable broadband is essential for households and businesses to engage with their communities and the wider world.

“Greater connectivity across our communities makes the Coromandel and our region even more attractive for people who want to work, raise their families, or simply visit the best part of our country.”

Build start date schedule:

| | |
|----------------------------|------------|
| Lakes Resort, Pauanui..... | 15/7/2024 |
| Kerepehi | 19/8/2024 |
| Whitianga (Wharekaho).. | 26/8/2024 |
| Whiritoa | 14/10/2024 |
| Kuaotunu West | 2/12/2024 |
| Te Mata | 30/12/2024 |
| Onemana | 17/2/2025 |
| Little Bay | 14/4/2025 |
| Opoutere | 26/5/2025 |

More information can be found online at www.chorus.co.nz/fibre-extension



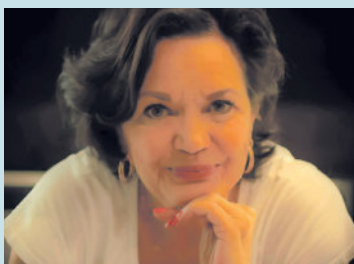
Scott Simpson
MP for Coromandel

Contact me anytime
0800 550 330 • scottsimpson.co.nz
mpcoromandel@parliament.govt.nz
f [scottsimpsonmp](https://www.facebook.com/scottsimpsonmp)

National 
Authorised by Scott Simpson, Parliament Buildings, Wellington.

Welcome to the first March 2024 edition of Whangamatā News

– a magazine By Locals, For Locals, About Locals



For advertising queries contact Jennie Black
Editorial/Sales Director
Phone 021 0232 1661
jennieablack@gmail.com

We welcome your letters, articles, photos, news tips and advertising enquiries

- We ask that letters and articles be no more than 250 words, although exceptions can be made.
- Photos should be high resolution and in focus.
- Include your name, no noms de plumes.

For editorial or photographic matters, phone Jennie on 021 0232 1661 or email WhangamataNews@gmail.com

Groube claims 3 titles in 1 day



Lola Groube. Image courtesy of Lauren Crerar.

Pauanui surfer Lola Groube has become the youngest winner of a national surfing event winning the New Zealand Women’s Surfing Surf Festival presented by Sun Bum and Volkswagen at the age of 13, at Pauanui last weekend.

Surfing in home waters on the Coromandel Peninsula, Groube also claimed the Under 18 and Under 16 Girls Divisions, a feat only achieved once by a Kiwi at a national surfing event.

The final day of the event was touch and go with the surf decreasing further, but New Zealand’s top female surfers pushed through the conditions to bookend a great weekend.

At 13, Groube eclipses fellow finalist Grace Spiers (WGM), along with Ava Henderson and Airini Mason as the youngest winner of an NZ Surf Series event, all three girls previously winning at the age of fourteen.

In today’s final, Groube posted a 15.0 point heat total in the final, relegating Spiers to runner up after having control of the majority of the final. An 8.5 point ride for a three turn combo on her forehead was what flipped the heat Groube’s way with two minutes remaining.

“Its pretty cool to win all three. Im pretty stoked, it is my best result I have ever got in the Open” exclaimed Groube.

“It was nice to have my family here today including my grandparents,” she added.

“The waves weren’t that good, pretty small but I managed to get a couple. I waited for the first ten minutes and got one ride on my backhand then I went down the beach and a wave came to me and I got my best score,” said Groube of the limited waves on offer.

Finishing in second place was Grace Spiers who opened the final with a 7.83 point ride and then held the lead for much of the final but eventually came up short, the sleepy ocean putting an end to her challenge for the title.

Double finalists Leia Millar (Piha) and Gabi Paul (Piha) finished third and fourth respectively in the final.

Saturday was capped off by an all-in soft top session with over 25 surfers taking over the line up at the end of the day, sharing party waves, tandem surfing and having a blast.

The draw and full results from the event can be viewed at www.Liveheats.com/SurfingNewZealand.

For further information on the 2024 NZ Women’s Surf Festival please contact Surfing New Zealand’s Ben Kennings on 021 2278732 or email benkennings@surfingnz.co.nz.



Whangamata Coastguard Radio Operators Required

Have you got some spare time and an interest in volunteering in a community organisation? Whangamata Coastguard is looking for volunteer radio operators to join our locally based team.

In the last decade Whangamata Coastguard has assisted with 448 incidents and brought 1,118 people home safely to their families and undertaken over 96,000 volunteer hours.

Radio operators have a key role in maintaining day to day communications with boaties on the water and perform an important part in our incident response when assistance is called for.

Our local radio operates seven days a week when weather conditions are good for boating between 8 AM and 4 PM and shifts are normally 4 hours long.

Full radio operator training will be given locally, boating knowledge is not necessary

If this sounds like you or you want more information please get in touch with Lloyd Smith on 021 244 5138. Or check out our website at www.coastguardwhangamata.co.nz

To the EDITOR

Regulations a necessity

Health and Safety regulations are very necessary and often save massive amounts of money. If the cost in time and money of putting up scaffolding seems excessive then what is the cost of a broken back, to both the taxpayer and the paraplegic needing massive amounts of assistance for the rest of their lives. When we introduced compulsory seatbelts and child seats there was a similar response that personal responsibility was being taken away by a Nanny state, and yet now we all see the common sense behind the legislation. This is not to say that sometimes some of the rules are ridiculous and I agree that traffic management has become an industry that needs serious examination.

Examples of excessive road cone use should not disguise the fact that regulation is often essential. We have seen the construction of leaky houses when the building/consent regulations were weakened. Last year we saw massive damage in roads and bridges when the logging industry was left to make its own rules.

Those people who complain that over regulation was squeezing the life out of common sense were very quiet when corporate bodies were allowed to put profit ahead of the interests of most Kiwis.

John Lipscombe
WHANGAMATĀ

World Day of Prayer

A special thanks to all that attended our World Day of Prayer Service on the 1st March.

The service was led by Methodist Presbyterian Churches. It was written by the Women of Palestine Christian Church. 25 people from Methodist/Presbyterian, Roman Catholic and Anglican churches attended

The Church was decorated with olive branches, cacti, citrus fruits and olive oil from the Palestine area.

A time of fellowship was shared over morning tea.

Again many thanks,

Lynne Sinclair
METHODIST PRESBYTERIAN
CHURCH OF WHANGAMATĀ

We welcome your letters!

We ask that letters be no more than 250 words, although exceptions can be made. Include your full name and where you're from. Email letters to WhangamataNews@gmail.com

Repcos Beach Hop 24 official magazine out now

Whangamatā News caught up with Noddy Watts to ask about the Official Repco Beach Hop 24 magazine. He told us that the team will start rolling out the official programme from this week.

Merchandise will be available at Beach Hop Central from Tuesday, 19 March, from 10am at the Whangamata Club HQ, although JCD Customs & Marine has a small selection now.

So, readers, you should see the best ever magazine at Whanga Books and New World now.

He also gave us some exciting new updates to keep us on the hop.

On Thursday, 21 March, the Mustang entrants have the option to Cruise the Loop or they can assemble at the Ford Reserve (Williamson Park) and cruise over the Kopu-Hikuaui, to the historic gold mining town of Thames.

One block of the main street will be closed for the biggest Classic Mustang Show in New Zealand this year. Mustangs will be on display from 11am to 2pm when prize giving will take place.

Should the classic cars want to drive The Power Cruise the Loop, they can check in from 8am



Noddy is ready for the Hop, literally!

until 10am and receive a special tag to visit any town around the Coromandel Peninsula (Pauanui, Tairua, Whitianga, Coromandel Town, Thames, Paeroa and any of the little villages along the route) by keeping a receipt of any purchase with a digital photo of their vehicle in that town. There's a random draw of \$5000 based on the Sunday Drive swing tag number at the Castrol Edge Thundercruise to Onemana Beach during the 2pm prize giving.

But wait, there's more - watch this space...

- Jennie Black

Andacco Eira
Available in 5 colours

Tango's

Whitianga 07 866 4465 | Whangamatā 07 865 8088
WWW.TANGOSSHOES.NZ

AfterPay, Zip & Laybuy welcome.

For all your print design needs

- ◆ Adverts
- ◆ Signs
- ◆ Business cards
- ◆ Menus
- ◆ Flyers
- ◆ Magazines

and more...

Contact
Anna Gledhill
aljgledhill@gmail.com
or **021 653 148**

Designer for
Whangamatā News & Repco Beach Hop 24 magazine

Curtains and Blinds and More

Whangamatā and surrounds for:
Curtains, Sheers, and Linings | Roman Blinds
Sun-screen, Light-filter, and Blockout Roller Blinds
Wood, PVC, and Aluminium Venetian Blinds
Honeycomb Blinds | Shutters
Motorisation and Automation

Locally owned and operated providing a complete in-home service from consultation to installation

Contact Louize or Gavin on
027 4777 916
or email info@curtainsandblinds.co.nz

Careers Expo assists life choices



On 19 February, Whangamata Area School, in conjunction with TCDC, hosted a Careers Roadshow.

With over 30 attendees, including Universities, various Trade organisations, the Defence Force and local businesses, students had the opportunity to access work and training opportunities and explore career information.

One of the most engaging experiences on the day was the presence of the Inzone bus, a travelling interactive careers experience that allows students to match their career aspirations, with information about the qualifications

and experience required to advance in a particular field. Many of the other stalls were interactive and allowed students to experience some of the elements of various jobs.

Students were also able to make personal contact with people in their areas of career interest which will be valuable to them as they begin to make decisions about life beyond school.

Throughout the day, both the police and defence forces proved popular, with many students also taking advantage of the presence of Waikato and Otago Universities.

Whilst it is early in the year, it is important for students to know that the subjects they are taking at school are relevant to their desired future pathways.

Ian Fulton, Deputy Principal was fulsome in his praise of the exhibitors and the event, "It is great for students from a relatively small place to be aware of the many opportunities that exist in the world of work".

It is hoped that the roadshow will become a regular feature on the school and wider community calendar.



my stays
TAKEN CARE OF

Unlock the full potential of your Holiday Home with MyStays.

As experts in short-stay property management, MyStays offers a blend of extensive experience, superior standards, and personalised service. As a NZ-owned company, you can trust that your holiday home is in capable hands. With over 10 years of successful property management, simply drop off your keys and let us take care of the rest.

Security & Safety
Enhance property security & safety with professional standards, communication, guest screening & 24/7 support.

Listing Management
Optimise your marketing & income with professional photography & 24/7 revenue management across six booking site.

Cleaning & Maintenance
Experience top-tier cleaning with hotel-quality linen and we handle routine upkeep & repairs.

Discover new possibilities for your holiday home income.
Reach out to us today for your complimentary holiday home income consultation.

Elle + Brent Knight
MyStays Owners

mystays.co.nz | info@mystays.co.nz | 07 376 7163

WHANGAMATA

OPEN 6 DAYS
Tuesdays to Sundays from 11am

Live shows & entertainment
Families welcome!
Anyone can join, come see us today

St Patrick's Day
SUNDAY, 17 MARCH
4PM

Come and join us for a fun Irish day, Irish music will be playing, participate in some fun games: **Cornhole, Quoits, Foomball, Giant Jenga & Connect Four.**

Wear green or dress in an Irish costume.
Prizes for Best Dressed sponsored by *Whangamatā NEWS*

SUNDAY, 10 MARCH
4PM

Welfare Bowls Day
THURSDAY, 14 MARCH

Ying's Thai & European Cuisine

OPEN 6 DAYS: TUE-SUN
LUNCH, DINNER & TAKEAWAYS

Everyone welcome
Lunches daily 11am-3pm
Dinner from 5pm

P. 07 865 9419 | @whangamatarsa | www.whangamatarsa.com

Pre-season rugby game this Saturday

After a successful 2023 the Whangamatā Senior A side are raring to go with the Thames Valley HG Leach Senior competition only weeks off starting.

Coach John Corbett has had the boys training since early January, with numbers into the 40's which will be a big contribution to the club fielding a Senior and B side again for the second year.

The club has had a busy summer with their Bunnings 30k Club upgrade almost complete, the new score board being put up, and cricket 3 nights a week, there is no real off season at Aickin Road anymore.

On Saturday, 9 March, the Senior B's will play Tuakau at 12:30pm followed by the Senior A's playing Suburbs at 2:30pm.

It will be a great tester for those fighting for their starting jersey this session especially in the forwards.

The HG Leach Thames Valley competition officially kicks off on Saturday 23rd March with our Senior A's playing Waihou, both teams will play at home the following weekend when the Senior B competition starts on the 6th of April hosting both Waihi & Coromandel. It will be a big day for the club with the opening of your new upgraded changing rooms and something special that we have in the pipe line.

The Senior sides find themselves playing together 3 times at home this season, the senior B's split into 2 grades once they have all played each other once which hopefully give us more home games together.

With our Swampfoxes game being such a success late last year, we now have the opportunity to host the Chiefs vs Blues Development Game on Saturday, 30 March which will be another big day for the club and our town.

WHANGAMATA SENIOR RUGBY 2024

| | |
|---|--|
| 23/3 Senior A vs Waihou - Whangamata | 11/5 Senior A vs Thames - Whangamata |
| | 11/5 Senior B vs Ngatea - Ngatea |
| 6/4 Senior B vs Coromandel - Whangamata | 18/5 Senior A vs Hauraki North - Waitakaruru |
| 6/4 Senior A vs Waihi - Whangamata | 18/5 Senior B BYE |
| 13/4 Senior A vs Waihi - Waihi | 25/5 Senior B vs Hauraki North - Waitakaruru |
| 13/4 Senior B vs Thames - Thames | |
| 20/4 Senior A vs COBRAS - Whangamata | 1/6 Senior A vs Hauraki North - Whangamata |
| 20/4 Senior B vs Mercury Bay - Whangamata | 1/6 Senior B vs Waihou - Whangamata |
| 27/4 Senior A Bye | 8/6 Senior A vs COBRAS - Whangamata |
| 27/4 Senior B vs Waihi - Waihi | 15/6 Senior A vs Mercury Bay - Whangamata |
| 4/5 Senior A vs Mercury Bay - Whitianga | 22/6 Senior A vs Thames - Thames |
| 4/5 Senior B vs COBRAS - Whangamata | 29/6 Senior A vs Waihou - Te Aroha |



Join Us AT THE **WHANGAMATA CLUB**



V.A.C. Award Winners
Playing Hits From The 50's To Now

Toucan

duet better than one!




Whangamata Club
Saturday 16 March
from 6:30pm

Dine and Dance with us this Beach Hop Week!

The Whangamata Club is truly "THE BIG FAMILY CLUB."



| | | |
|------------------|---|---|
| MON 18TH | Bistro: 12pm - 8pm | |
| TUES 19TH | Bistro: 12pm-9pm Restaurant: 5pm - 9pm | • Coastal Rockers Club Night featuring Gerry Lee 7pm. All welcome |
| WED 20TH | Bistro: 12pm - 9pm Restaurant: 5pm - 9pm Carvery: 5pm - 8.30pm | • Tim & The Rockets 7pm |
| THUR 21ST | Bistro: 12pm - 9pm Restaurant: 5pm - 9pm Carvery: 5pm - 8:30pm | • Rock'n'Roll Dancing Lessons (Intermediate) 2pm, \$10pp. Please arrive early |
| FRI 22ND | Bistro: 12pm - 4pm Restaurant: 5pm - 9pm Carvery: 5pm - 8.30pm | • Rock'n'Roll Dancing Lessons (Beginner) 2pm, \$10pp. Please arrive 15 mins early • Gerry Lee 6pm • Chet O'Connell and the Rock & Roll Riot from 8.30pm |
| SAT 23RD | Bistro: 12pm - 4pm Restaurant: 11am - 3pm Carvery: 5pm - 8.30pm | • Repco Pre-49 Hot Rod Show • Toucan 12pm - 3pm • Gerry Lee 6pm • Chet O'Connell and the Rock & Roll Riot from 8.30pm |
| SUN 24TH | Bistro: 12pm - 9pm Restaurant: 5pm - 9pm | |

OPEN DAILY FROM 11AM

BISTRO
Monday - Friday from 3pm
Saturday & Sunday from 12pm

DINNER MENU
From 5pm daily

RESTAURANT
Friday to Sunday from 5:30pm

404 PORT ROAD
FACEBOOK.COM/THEWHANGACLUB
WWW.WHANGAMATACLUB.CO.NZ
P. 07 865 8705

Dahlias delight

The annual Dahlia Show of the Whangamata Garden Club was held on 20 February – the show never disappoints.

Irene Taylor and Christine Robertson had a reward day for sure, it's so lovely to come to these events, loads of tips for gardeners and humbled thanks to truly exceptional blooms!

- Photos by Mark James, Whangamatā News



Best in Show was won by Irene Tyler.



Christine Robertson won best cactus, best pom pom and more.



Results

Cactus type:

- 1st Christine Robertson
- 2nd Roselle Gould
- 3rd Christine Robertson

Pom Pom:

- 1st Christine Robertson
- 2nd Irene Tyler
- 3rd Christine Robertson

Waterlily:

- 1st Sylvia Manning
- 2nd Philippa Dennison
- 3rd Philippa Dennison

Any other:

- 1st Marie Wise
- 2nd Marie Wise
- 3rd Christine Robertson

Vase of Dahlias:

- 1st Irene Tyler
- 2nd Christine Robertson
- 3rd Marilyn Fowlie

Best in Show:

- 1st Irene Tyler



Something for **EVERYONE!**

50% OFF
all clothing
in store



Loads of **E-Bikes**
on **SALE!**



New owners! Jenny & Geordie, locals in Whangamata for 12 years!

www.whangamatacycles.com

Phone 865 8096

700 Port Rd, Whangamata

Ratepayers both frustrated and passionate

The Whangamata Ratepayers Association (WRA) AGM took place on 24 February. Over 60 people attended, a combination of WRA members and the general public. Organisers were disappointed with the turnout particularly as Mayor Len Salt had been invited to speak at the public meeting following the AGM.

During the AGM, Chair Rob Boston reported on the highlights of the past year and spoke of the challenges that lay ahead in 2024. There is a need for a strategy which changes the way local government better serves its local communities. WRA confirmed its intention to address this strategic need and to expand relationships and partnerships with a wide range of organisations, groups and individuals for the benefit of our community ongoing.

At the conclusion of the WRA AGM, the public meeting commenced and Mayor Len Salt gave a presentation covering a wide range of topics which included 2023 cyclone recovery, roading and the potential to attract additional funding from outside agencies, restrictions on Councils by the Local Government Act, 3 Waters, District priorities, the role of Community Boards and the current forecast of 2024 rate increases across the district of between 13 and 16%.

At the public meeting questions from the floor were both passionate and frustrated which created heated discussion. People questioned why rates raised in Whangamatā did not benefit the town, the inadequacy of the stormwater/flooding working group engagement, the establishment of a Māori ward in the TCDC district, levels of TCDC debt and the servicing thereof, the state of the Island View Reserve regarding parking facilities and dune protection in the immediate vicinity, and the retention of 101 Lindsay Road for a Community Marae and Hub.

There were no adequate answers forthcoming.

A group of Coromandel Ratepayer Associations met in Whitianga on 2 March with the intention of forming an Alliance of Residents and Ratepayers' Associations along the eastern seaboard to raise common issues with TCDC, particularly around accountability, transparency and meaningful consultation. A meeting in Council Chambers in Thames with TCDC councillors and staff has been arranged for Thursday 21 March with the Alliance who will be a representative voice to raise these concerns.

TCDC's "just the essentials" according to Mayor Len Salt, 2024/2034 Long Term Plan will be unveiled shortly with public consultation taking place from 8 March to 8 April. Submission hearings are scheduled for 30 April to 2 May.

WRA will be making a submission and we encourage you all to do so as well.

The 2024/2034 Long Term Plan submission process provides an opportunity to reinforce the view that Whangamatā wants our fair share of the rates collected by TCDC returned to the town.

A common complaint, heard regularly is "council doesn't listen so what's the point?"

That might well be the case BUT every submission is logged and analysed and if the community takes action and makes submissions, it WILL make a difference going forward. If it doesn't the only conclusion that can be drawn is that TCDC's consultation process has failed.

Rates paid by the Whangamatā ratepayers must first benefit the town and its environs.

WRA's list of topics for inclusion in the 2024 LTP have already been presented to the Community Board on multiple occasions.

They are:

- Stormwater and flooding mitigation issues must be resolved urgently
- Regular maintenance and servicing of infrastructure assets paid for by our ratepayers must be prioritised and the maintenance and repair of Council assets across the board is a major issue. Significant funding needs to be allocated in the 2024 LTP to ensure all Council assets, large and small, are well-maintained
- Whangamata Resource Recovery Centre (Seagull Centre): The resource and recycling centre to improve waste management of materials destined for landfill.
- Cycleway from town centre to Mountain Bike Park: This specific project is important to our community now, for both cyclist safety and the local economy.
- Roading, Footpath and Streetlight improvements: These cover the range of access and safety, kerbing, potholes, street lighting, CCTV etc.
- Fire Station Playground upgrade: This approved project has been deferred for some years.
- Whangamatā Beach: Coastal erosion protection, keep the beach clean, repair the cross-dune accessways.

- Whangamata Spatial Plan: Important in the development and growth of the town for both residential and commercial purposes
- Widen The Causeway Bridge: For both cyclist and pedestrian safety
- Additional and renovation of existing Public Conveniences.

Throughout the past year WRA has made every endeavour to consult and engage with the Whangamatā community and to advocate on your behalf in every TCDC and other avenue available to us.

WRA are not sure that all of what we as stakeholders have submitted to the Community Board will be included in the 2024 LTP.

Like the community we serve, we will not know the contents of the 2024 LTP Consultation documents until Friday 8 March. However, we have made every effort and will continue to do so on your behalf.

WRA 2024/25 membership annual subscription remains at \$10.00. Subscriptions are now due for the year commencing 1 April 24 and are payable online via Whangamata Ratepayers Association website: Bank account 02-0472-0054461-00. Please enter both Reference (Surname) and Particulars (subs).

- Whangamata Ratepayers Association



Whangamatā Arts Collective invite you to follow the Easter Art Trail

ART TRAIL

EASTER WEEKEND
Saturday & Sunday
30th & 31st March
10am - 4pm
WHANGAMATĀ

visit
www.artscollective.co.nz
or our Facebook page for more information

Arts Collective

Volunteers needed for new exercise regime



A new project coming together by two locals, Karen Crossan and Tony Warren, have been attempting to set up Parkrun NZ here in Whangamatā.

Potentially they are hoping that the official start date to be determined, but within the coming weeks, for the weekly walk, jog and run for the very local 5km course.

Parkrun started in 2004 in England and has grown over the years to nearly every country world wide. It is a free 5k event that encourages walkers, joggers, runners and especially volunteers.

It's free and easy to take part and it is timed and your result is emailed the same day - Saturday mornings at 8am and all courses must be approved nationally - with no road crossings or roads/footpaths.

The crew have mapped out a course that runs around the estuary in Moana Reserve, starting just over the causeway, going around the estuary area for 2.5ks and returning

the same way. Then enjoying a coffee afterwards for a lovely chat/catchup.

Essentially, they need volunteers to help each week, as timekeepers, scanner/s (for the time), others to hand out placing disks at finishing time - a tail end Charlie!

Karen told us " I am an avid believer of use it or lose it and that exercise is important in all our daily lives - to set your own personal goals for completion of the 5kms.

Over the years I have been doing Parkrun (about 11 Years) I have seen many people encouraged to participate due to health issues/ recoveries from major scares, and their journeys and improvements have been inspiring."

So, if you can help the inaugural Parkrun by volunteering, or want to jog, run or walk, contact organiser Karen Crossan: kjv.karenc@gmail.com or 021 2447342

Play for a greener tomorrow

The Whangamatā toy library has been operating for over 30 years and hundreds of children have enjoyed playing with the toys during that time.

We encourage families and communities to embrace sustainable play practices through the use of eco-friendly toys. Most toys are made from recycled materials and by renting toys you are not only saving money but also helping save the planet.

Children can come in every two weeks and borrow different toys. The toy library caters for children from birth to eight years old.

The monthly membership fee of \$5 is affordable for all families.

We are open every Saturday from 10am. Come and check us out, you'll be surprised what we have to offer.



Enquiries to Jenny 021 584 070.



\$1 WINGS WEDNESDAY

from 4:30pm until sold out

FULL SIZE BUFFALO WINGS!!

\$1 PER WING!!

Dine in only

conditions apply

3SOME THURSDAY

Grab any gourmet pizza, 2 pints of tap beer OR 2 glasses of house wine for only...

\$33

Every Thursday!

Book your table now - phil@crafthauswhanga.co.nz

FRIDAY@ CRAFT HAUS

\$10 PINTS any PROPER PINT tap beer

\$10 PIZZAS any house pizza

AFTER WORK SHOUT

2.30PM TO 5.30PM

SHELLFISH SATURDAY

GRAB 1KG OF NZ GREENLIPPED MUSSELS W GARLIC BREAD + A PINT OF TAP BEER OR GLASS OF HOUSE WINE

ONLY \$25

SLIDER SUNDAYS

EVERY SUNDAY

ONLY \$2 PER SLIDER

Just like a regular burger, but cuter!

DINE-IN ONLY Conditions apply

Book your table phil@crafthauswhanga.co.nz

Follow us on Facebook & Instagram to keep up to date with all our events & deals @crafthauswhanga

CRAFT HAUS
Gastropub Est. 2022

711 Port Road, Whangamata
[@crafthauswhanga - www.crafthauswhanga.co.nz](https://www.crafthauswhanga.co.nz)
07 865 6300

ONLY
while
stocks last!


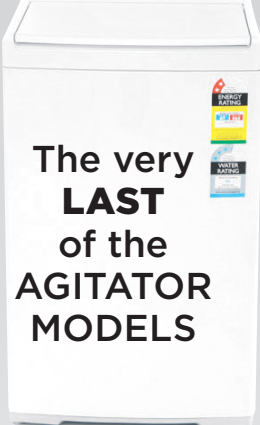



MARCH MADNESS Stocktake SALE!

8 MARCH - 23 MARCH

REFRIGERATION

| | | |
|--|---|--|
|  369 S/S REFRIGERATOR WAS \$1899 NOW \$1099 |  380L FRIDGE FREEZER WAS \$2399 NOW \$1599 |  FRENCH DOOR 5690 S/S WAS \$5199 NOW \$3999 |
|--|---|--|

WASHERS

| | | |
|--|---|---|
|  7.5KG TOP LOADER WAS \$1249 NOW \$999 |  <p>The very LAST of the AGITATOR MODELS</p> |  7KG WASHER WAS \$1699 NOW \$1299 |
|  7.5KG TOP LOADER WAS \$1249 NOW \$999 | |  |

BARBECUES

| | | |
|--|--|--|
|  Q 2800 WAS \$1008 NOW \$890 |  EXP PREMIUM WAS \$2899 NOW \$2499 |  Q 2200 BLUE WAS \$599 NOW \$499 |
|--|--|--|

TELEVISIONS

| | | | |
|---|---|--|---|
|  55" OLED WAS \$4699 NOW \$2699 |  |  48" OLED WAS \$3499 NOW \$1999 |  |
|---|---|--|---|

 **OVEN & COOKTOP PACKAGE**
7 Function Oven & Ceramic Cooktop
WAS \$1499
NOW \$1199

ALL OUTDOOR FURNITURE
30% OFF
or more

MOST SleepMaker® BEDS
60% OFF


DISHWASHER
Stainless steel
WAS \$1499
NOW \$1199


DISHWASHER
Stainless steel
WAS \$1299
NOW \$899

20% OFF ALL COFFEE MAKERS

100% WHANGAMATA

605 Port Rd, Whangamata • Phone 07 865 9458

Pauanui's long lunch fit for royalty



What a fun, amazing afternoon for the Pauanui Long Lunch en Blanc with 200 guests on the last weekend of February. The weather played the part and Billy Point made a stunning location to have their inaugural event.

With chandeliers, gold goblets, desserts to die for, platters fit for a queen, and chilly bins after chilly bins loaded with yummy food.

Going by the feedback it will definitely happen all over again with another secret location next year.

An event we are sure will go on people's calendars 2025!

- Photos by Pat Courtenay



Services to support seniors in our community

Eastern Coromandel Community Services Trust offers van trips and a personal shopping service for elderly or people who are isolated and struggle to access services.

It may be hard for people with mobility or transportation challenges in our rural town, and having a shopping companion to support our older residents can have vast benefits.

The community van trips are a great way for people to connect

with each other and with services outside of Whangamatā including banking, visiting friends and grocery shopping. The trips have become very popular among our residents, here's what some of them had to say:

"I am thrilled to have this facility available with a good selection of places to go. I am very happy to take advantage of it."

"The van trips are a great day out. There's a nice buzz with everybody

in the van. I can go to different shops that I wouldn't usually get to."

"If I didn't have anyone to take me (shopping), I would have to stay at home all day."

The personal shopping service has now been developed into a weekly service as part of our Charitable Purpose/Kaupapa. The service evolved based on feedback on the challenges our community face. Those using the service said they enjoyed having support with

carrying their shopping and reading the labels on food items.

We strive to grow and improve to meet the needs of our community, which is determined in part from the results of our annual public survey. If you have any additional services you would like to see us provide, please let us know!

For van bookings, personal shopping or more information contact us on 07 865 7065 or 027 470 1714.

FLOORINGXTRA.CO.NZ

FLOORING TO SUIT YOUR STYLE

CARPET • VINYL • TIMBER • LAMINATE • RUGS

Phone or email us! We're measuring & laying! View samples instore!

WHANGAMATA FLOORING XTRA

Whangamata | 636 Port Road | 07 865 8562 | whangamata@flooringxtra.co.nz

ROOFING

LOCALLY OWNED & OPERATED

For: New roofing | Re-roofing
Continuous spouting | Metal fascia
Downpipes

CALL US FOR YOUR FREE QUOTE

Geordie Walden: 022 396 4143
ccspouting@gmail.com | www.ccspouting.co.nz

Thousands of mangrove seedlings trickling into our estuary

Whangamatā News caught up with local Heather Ardley, of Patuwai Drive, Whangamatā, last weekend. Heather has been a resident for 23 years, and to see her incredible energy, pulling mangrove shoots from the estuary on a daily basis was astounding.

Now we are talking 250 per day ! Heather told us " thousands of mangrove seeds are floating daily down the estuary, getting caught up in the grasses at high tide and incredibly growing roots and embedding themselves and within 10 days, they take control with a solid root system, feeding from their own bulb (dycotyledon)."

Mangroves are a small, yellowish-green tree forming dense groves on coastal mudflats, estuaries & shallow harbour entrances in the upper North Island. With inconspicuous flowers they bear large, leathery fruit which falls from the tree and then floats in the tide. A total menace which can grow up to more than 2 metres tall.

Heather, at 85, enjoys her daily swim of 200 strokes and soon after continues to pull 250 shoots as her routine. She showed us her best samples from the day before and this week alone she has pulled 2,250 seedlings.

What concerns Heather the most, is that the area beside the estuary for young families, kayak, paddle boards



and swimmers, will not be able to enjoy the shoreline at the estuary.

Heather and her younger friend Annie, who lives three doors down, work together, Annie on the other side of the estuary and Heather on her home side, for seven years, tirelessly taking on the volunteer battle.

Isn't our community just full of legends who just get on with it.

Heather said "If I didn't do it, in 10 months they will be bushes."

Do you enjoy the estuary and want to keep the beauty and access for all? Perhaps you can help Heather and Annie by pulling out some seedlings with a root system taking



hold. You can contact Heather on 07 865 6700 for more information. Do it today!

- Jennie Black



50%

OFF

Sanctuary Midnight and Royal.

NEW ZEALAND'S MOST LUXURIOUS SLEEP.

ON NOW!
Floor Model Clearance

Offer valid until 26 March, 2024.

2 years interest free*
On in-store purchases \$999 & over 'till 26.03.24.



BEDS R US WAIHI
94 Seddon Street, Waihi
PH 07 863 8787



BEDS R US WHANGAMATA
419 Port Road, Whangamata
PH 07 865 9027



valid to 26.03.24 or while stocks last. Discount offers apply to selected beds and bedding only, prices as marked. Offers exclude Everyday Dream prices, run outs, clearance stock (unless otherwise stated) and not to be used in conjunction with any other offer. See in-store for details. We reserve the right to correct errors and misprints and to change product specifications. All products priced in good faith and will be available, except in circumstances beyond our control. Product ranges vary between stores and some products are available in selected stores only.



Richmond Villas

LIFESTYLE VILLAGE

*Living the lifestyle,
loving the choice...*

A Lifestyle Village in Thames on the Coromandel

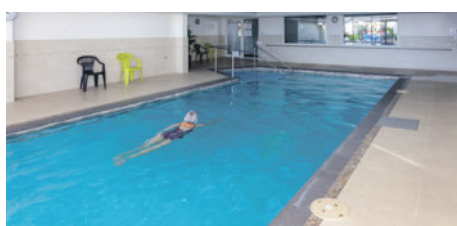
AVAILABLE NOW:

**• TWO BEDROOM VILLAS
ENQUIRE TODAY!**

All apartments are within walking distance to Thames' shops, cafes and walkways. The perfect location to enjoy your fun-filled retirement.

Our open plan, single level apartments feature covered balconies with fantastic views of the sea, Kauaeranga River and mountains.

Each unit's elegantly finished kitchen, lounge, bedroom and bathroom offer stylish warmth and light. All residents enjoy scenic views from each level's shared lounges, use of the Village Community lodge and participation in all activities and amenities at your leisure.



**Phone us
to view by
appointment**
*Come and experience
the difference!*



82 Richmond Street, Thames
0800 868 5484
www.richmondvillas.co.nz

Predator free workshop



Wildlife legend Cam Speedy is set to share his top tips on dealing with predators at a free Opoutere workshop on Saturday, 9 March.

Cam Speedy, a distinguished wildlife ecologist and an inspirational figure in New Zealand's predator management with over 30 years of experience, is set to share his top tips on dealing with pest control and trapping predators at a free community workshop in Opoutere on Saturday, 9 March 2024.

Organised by the Wharekawa Catchment Care Group, 'Maximize Your Predator Success' is a rare opportunity for community members and wildlife enthusiasts on the Coromandel Peninsula to learn practical tips on predator management from a passionate pioneer in the field.

Cam Speedy's extensive expertise, particularly in Sika deer research, has earned him a reputation as a wildlife legend. With hundreds of magazine articles to his name, Cam has been a trailblazer in New Zealand's wildlife management landscape over the past three decades.

He has dedicated his working life to understanding some of the complex wildlife issues unique to New Zealand, sharing that understanding with others and trying to make sure valued wildlife and natural ecosystem resources remain sustainable for future generations of New Zealanders.

Event organiser David Burbage said: "We're really excited to be welcoming Cam Speedy to the Coromandel Peninsula in March. He's an inspirational speaker and has changed the way people think about predator management. He truly is a legend in his field, encouraging New Zealanders to

understand how predators think so that they can help to play their part in protecting native wildlife."

The 'Maximize Your Predator Success' workshop is open to all at no cost. It promises to be an engaging event for community members to learn practical strategies for tackling predators.

About Cam Speedy:

Cam Speedy is a freelance wildlife ecologist based in the Central North Island, with more than 30 years' experience working on a range of both native and introduced wildlife. His work has encompassed game, pest, threatened species and ecosystem management, as well as research and resource consent management. A regular contributor to hunting magazines since 1993, Cam is known for his passionate and inspired speaking on wildlife management and environmental issues.

About the Wharekawa Catchment Care Group:

Formed in 2005, the Wharekawa Catchment Care Group in Opoutere are local champions of environmental stewardship. Run by a committee of volunteers, the group has around 50 members who are dedicated to restoring the local river, tributary and wetlands.

As organisers of the 'Maximize Your Predator Success' event, members of the group aim to empower the community with knowledge and tools to tackle predators on the Coromandel Peninsula to help protect native wildlife.

Find out more about the Wharekawa Catchment Care Group by joining their Facebook group.

Event details

WHAT: Maximize Your Predator Success Workshop with Cam Speedy

WHEN: Saturday, 9 March, 9am-2pm

WHERE: Starting at Opoutere School, 1203 Tairua Road, RD1, Whangamata 3691 (followed by a field trip to Andrew and Maree Palmer's farm, which is close to the school).



Whangamatā 105b Mako Road

Beach Hop hideout

So handy to the marina and boat ramp this property has everything you need. In a private and quiet location in Mako Road, you'll enjoy the indoor outdoor living flow this property delivers. With three bedrooms and two bathrooms (plus a sleepout) there is room for everyone. A spacious living area extends through to a well designed, modern kitchen with two pantries and a breakfast bar. A dining alcove caters for those around the table gatherings. The boat garage is 4.6 metre stud by 5.9 metres wide and 7.9 metres long (approximately). Roller door is 4.8metres wide by 4 metres high. A Suntuff roof structure provides cover for outdoor dining, bbq's or entertaining. It is a short walk to the Ocean sports club, supermarket, harbour, town and beach. This is a must to view and a must to be sold.

bayleys.co.nz/**2221293**

374_{sqm} 3 2 2

Auction (unless sold prior) 11am Thurs, 4th Apr 2024

96 Ulster Street, Hamilton

View By appointment

Gordon Turner 021 385 385

gordon.turner@bayleys.co.nz

Carol Hatton 027 574 3758

carol.hatton@bayleys.co.nz

MH REALTY LTD, BAYLEYS, LICENSED UNDER THE REA ACT 2008



Whangamatā 106 Pohutukawa Crescent

Join the beachfront family

Live life to the fullest and become part of Whangamatā's beachfront elite. After 55 plus years this home is now on the market giving a new family a chance to reside or holiday on the beachfront. This residence has grown as the children grew, a fantastic story with history and many memories but now the time has come to pass this cherished home on to forge a new legacy for the next custodians.

Nestled along the pristine shores of Whangamatā, 106 Pohutukawa Crescent offers an unparalleled opportunity to indulge in the ultimate beachfront lifestyle at the popular quieter end of the beach and ever so close to the estuary. This magnificent two-storey residence boasts seven bedrooms, two bathrooms, and not one, but two kitchens, providing ample space and flexibility for your family's needs.

bayleys.co.nz/**2221270**

665_{sqm} 7 2 2

Tender (unless sold prior) Closing 4pm Thurs, 21st Mar 2024

501a Port Road, Whangamatā

View By appointment

Dale Sholson 021 636 519

dale.sholson@bayleys.co.nz

Gordon McGregor 021 998 810

gordon.mcgregor@bayleys.co.nz

MH REALTY LTD, BAYLEYS, LICENSED UNDER THE REA ACT 2008



07 865 8499

328 Ocean Road, Whangamata

whangamatarealestate.co.nz

105 Esplanade Drive, Whangamata

The word 'Opportunity' is often overused, but not this time. Tightly held and enjoyed by three generations since the 60s, this Esplanade Drive waterfront home and it's adjoining Beverley Tce backyard section are for sale together or separately.

Take in the grandstand views of Whangmata's surf beach, outer islands and the Pacific Ocean from the lawn or upper level deck, either is exceptional.

The Lockwood home, garage and 'The Shed', provide a very functional holiday set up or permanent abode. Having full use of the adjoining section at the rear is a bonus, giving dual access. It also opens up a raft of development options.

4 4 1

Deadline Sale 4pm 4th April 2024 (unless sold prior)

View 1pm Saturday

Sharon Laurenson

M 027 662 3164

sharon@whangamatarealestate.co.nz

View Listing whanga.co/8304



304 Beverley Terrace, Whangamata

Treelined freehold full site in the Extra Density Zone. What a find. Available to purchase as a stand alone option or with the adjoining property at 105 Esplanade Drive.

1012sqm of pure delight with its mature trees and lawn area. Alone it is a blank canvas waiting to be developed. Added to the adjoining Esplanade property, it provides dual access, room for tents and an unspoilt playground, or ample overflow parking for boats, cars and campers. Having the opportunity to purchase both sites together, the development options are there to be explored.

Call the Architect, call the builder, call the family and make a plan. Perhaps first, call the agent and secure the property to make it part of your future.

Deadline Sale 4pm 4th April 2024 (unless sold prior)

View 1pm Saturday

Sharon Laurenson

M 027 662 3164

sharon@whangamatarealestate.co.nz

View Listing whanga.co/8305





07 865 8499 328 Ocean Road, Whangamata whangamatarealestate.co.nz

111A Esplanade Drive

- Spectacular unobstructed ocean and island views
- Prime central beach location close to surf club and Blackies cafe
- Wake up and start the day with breathtaking sunrises
- Designed for permanent living or as a holiday paradise
- 4 double bedrooms including a large bunk room and 3 bathrooms
- Spacious open plan living with direct deck access to relax and enjoy the seascape
- Seize the moment and arrange an appointment to view

To be sold by Auction 328 Ocean Road, Whangamata, 1pm 6 April 2024 (unless sold prior)

View by appointment



Murray Cleland
021 950 445

Colin Thompson
021 723 723

View Listing: whanga.co/8316



211 Bellona Road

- A classic 70s style holiday home
- Direct access to 9-hole golf course
- Close to central beach and town centre
- Three bedrooms plus basement
- Great indoor/outdoor flow onto upstairs deck
- Private and fully fenced sunny rear yard
- Established grounds with mature fruit trees
- Attached garage and ample off street parking

To be sold by Auction 328 Ocean Road, Whangamata, 1pm 6 April 2024 (unless sold prior)

View 1pm Saturday 9 March, 1pm Sunday 10 March, 1pm Saturday 16 March, 1pm Sunday 17 March



Colin Thompson
021 723 723

View Listing: whanga.co/8311



315B Mary Road

- Six double bedrooms over two levels
- Two bathrooms and two laundries
- Spacious open plan living with dual decks
- Modern kitchen and bathrooms
- Security alarm system, heat pump
- Internal access garage + carport
- Low maintenance grounds, fully fenced yard
- Handy to Surf Club, Blackies Café, Williamson 9-hole Golf Course
- A very versatile property catering for large family gatherings and good times

Deadline Sale closes 4pm 21 March 2024 (unless sold prior)

View 12pm Saturday 9 March and 12pm Saturday 16 March



Sharon Laurenson
027 662 3164

View Listing: whanga.co/8307





07 865 8499 328 Ocean Road, Whangamata whangamatarealestate.co.nz



408 Linton Crescent

- Upcoming auction launching 13 March 2024
- View 12pm Saturday 16th and Sunday 17th March



Nancy Millett
021 517 708



111 Te Pamahue Drive

- This stunning property offers picturesque and unrestricted views
- Tranquil setting and living overlooking Waireka native reserve
- Three bedrooms with rumpus or 4th bedroom plus office
- Designer kitchen
- Spacious indoor/outdoor living

Deadline Sale closes 4pm 9 April 2024 (unless sold prior)
View



Julian West
027 222 4364
View Listing: whanga.co/8314



420A Rangī Avenue

- Located in a prime position with easy access to the main beach
- Open plan living opening onto a covered deck area
- Three bedrooms
- Off-street parking with storage area for the beach toys



Colin Thompson
021 723 723
View Listing: whanga.co/8298



6 Kapakapa Road, Opoutere

- Classic Opoutere bach
- Expansive harbour, sea, beach & ocean views
- Separate serviced sleepout
- 1166m² bush clad section

View by appointment



Dave Anderson 021 790 488
Renee Jacobsen 021 250 8541
View Listing: whanga.co/8315



115A Otahu Road

- Open plan living with direct deck access
- North/west aspect to capture the sun
- Three bedrooms
- Separate garage/workshop
- Easy care front site

View 11am Sunday 10 March



Colin Thompson
021 723 723
View Listing: whanga.co/8256

WHANGAMATĀ SANDS

LIVE YOUR
BEACHSIDE DREAM



CONSTRUCTION COMMENCING 2024



FREEHOLD LUXURY
HOMES SELLING NOW



4 Bedroom



3 Bathroom



Media Room (in Lots 2 - 5)



Double Garage (lift option available)

104 BARBARA AVENUE (Site accessed via St Patricks Row)

whangamatasands.co.nz

Neil Dayal
Barfoot & Thompson
027 322 0989
n.dayal@barfoot.co.nz

Colin Thompson
Whangamatā Real Estate
021 723 723
colin@whangamatarealestate.co.nz

BARFOOT
THOMPSON &
PROJECTS

Whangamata
Real Estate



LINDSAY TURNBULL

0274 238 093

lindsay.turnbull@realty.co.nz

Ask me about my extremely competitive commission!

Thank you so much for all you have done for us. We will be forever grateful; you are absolutely fabulous! We really do appreciate you.

RAM & JILL, SELLERS

Throughout the process and successful sale, Lindsay kept us fully informed on the progress and the reactions of prospective buyers by way of phone and text messages. She has been an excellent and knowledgeable person to deal with on our behalf, and we have no hesitation in recommending her to any future sellers.

DENIS & SHARON, SELLERS

Lindsay's successful marketing campaign with great photography and a cool video along with the @realty team proved to be the difference in selling our apartment in a very challenging and difficult market. With a limited buyer pool, Lindsay's marketing generated lots of enquiries and good attendance numbers at the open homes.

MAREE & DARRYL, SELLERS

Lindsay from @realty was simply amazing. She worked so hard to make our purchase come together when we thought it would all fall over. She didn't stop there; Lindsay worked above and beyond expectations through the due diligence and handover process. Straight up info we could trust. We couldn't recommend Lindsay more highly.

BLUE & KATEY, SELLERS



For Sale

BY LINDSAY TURNBULL

105B TOBIE PLACE, WHANGAMATA

3 BED | 2 BATH | 3 CAR | GARAGE | OFFICE



SPACIOUS AND SEAMLESS

This is a true home. This lovely house can not be completely expressed through pictures, it needs to be viewed in person. Open to view and private inspections will be as normal but we feel that a chat and a cup of tea is more suitable for 105B. We would love to know what you feel a fair amount would be for this forever piece of Whangamata Off the family-friendly cul de sac, the driveway leads you to the established garden.....quiet and private.

Bowls results

On the final evening of February, the Whangamata Bowling Club completed the Whangamata Real Estate sponsored Crackajack series. The team entries were graded into three divisions, with the 1st Division competing for the Alan Bayly Memorial Cup.

With the enjoyment of the evening's balmy weather, two games of an hour each were played with much fun and laughter, although the competitive spirit was clear to see.

Crackajack results

Division One

1st and winners of the Memorial Cup: (Pecky Blinders) Peter Reekie, Stu Ellis, Colleen Reekie

2nd: (Toilet Bowls) Ben Ashford, Tony Lucas, Josh Mainiarry

3rd: (Slow Ramblers) Mike Street, Graeme Thwaites, John Hares

Division Two

1st: (Dee Jays) Dean Furmininger Steve Whitley, Jo Furmininger

2nd: (Graystoke) Lloyd Smith, Roger Gray, Michelle Whitley

3rd: (Teachers Pets) Ian Fulton, Keith Miles, Rachel Fulton

Division Three

1st: (USR) Simon Bratton, Richard Purdy, Ursula Purdy

2nd: (GST) Geoff Tempest, Tim Fletcher, Mike Askey.

3rd: (Dublin's Finest) Joy O'Sullivan, Don O'Sullivan, Anne Purcell.

In other news, the Under 5 Year Men's Championship were completed over the weekend with Tony Lucas and Steve Whitley winning against Richard Purdy and Roger Gray.

Our last Open Tournament, played on 21 February, was sponsored by Whangamata Challenge Service Station. The One Day Classic saw teams from Waihi Beach, Pauanui and Tairua joining in with our local bowlers.

Open tournament results

1st: Pauanui

John McConnell, Dave Gillingham, Graeme Bowers, Chris Smith

2nd: Whangamatā

Graeme Thwaites, Ivor Clemence, Jim Newman, Sue Burnide

3rd: Whangamatā

Stephen Hughes, Chris Day, Sue Smith, Don O'Sullivan

4th: Waihi Beach

Judith Wilson, Sian Jones, Bev Rodgers, Barry Wilson

- Keith Miles



1st Division winners: Colleen Reekie, Peter Reekie and Stu Ellis with Club President Lloyd Murcott.



2nd Division winners: Dean Furmininger, Jo Furmininger and Steve Whitley.



3rd Division winners: Richard Purdy and Simon Bratton (Ursula Purdy absent).

CLASSIFIEDS

PUBLIC NOTICES

AVAILABLE NOW
Medium/Long-Term Accommodation Rental
305 Winifred Avenue, Whangamata

Premium location - Beach Access 5
150m to Port Road - restaurants, cafés
Suit professional
Self-contained cabin with separate bedroom available
Sun deck, off street parking



Phone 021 24 24 284. Be quick!

SITUATIONS VACANT

Digger Operator & Drainlayer Roles



Earth Experts is a Civil Construction company carrying out projects around the Thames/Coromandel region.

We are seeking an experienced Digger Operator and Drainlayer for ongoing work in the Thames/Coromandel region.

- Drainlayers should be able to interpret plans, work out/calculate levels, plan & action daily/weekly workflow, install and test PVC and concrete pipework/hardware to the standard specification and maintain H&S standards on site.
- Digger operators should be able to follow instructions and work the plan, dig to the laser, backfill & compact, use safe lift practices, complete daily maintenance checks, help out in other areas of the operation when needed and maintain H&S standards onsite.
- Accommodation and travel allowance can be supplied for the right individuals
- Rates negotiable based on experience

Please email your resume and contact details to accounts@earthexperts.co.nz or call Pat on **021 087 80278** if you require more information.

Sports results

MAH JONG

1 March: Another lovely afternoon of Mah Jong with 53 players.

The winners were:

1st equal with 42pts Fiona Volkner & Sally Hitchcock

2nd with 38pts Carol Archer

3rd with 35pts Colleen Bickerton

The lucky number today was 11 won by Colleen Belsham.

TABLE TENNIS

29 February: Played at the Whangamata Club. Roget Wolfe was our winner with 10pts and Wayne Broome was 2nd with 9pts then Barbara Hoy was 3rd with 8pts.

Whangamatā Tides 2024

MARCH 2024

☾ New Moon: 10th

☀ Full Moon: 25th

| Date | | High tide | | Low tide | | Sun rise | Sun set | | | | |
|------|-----|-----------|-----|----------|-----|----------|---------|-------|-------|-------|-------|
| | | AM | PM | AM | PM | | | | | | |
| 8 | Fri | 5:45 | 1.8 | 18:02 | 1.8 | 11:53 | 0.5 | 07:06 | 19:46 | | |
| 9 | Sat | 6:44 | 1.9 | 19:04 | 1.9 | 0:14 | 0.4 | 12:50 | 0.4 | 07:07 | 19:44 |
| 10 | Sun | 7:39 | 2.0 | 20:02 | 2.0 | 1:12 | 0.3 | 13:46 | 0.3 | 07:08 | 19:43 |
| 11 | Mon | 8:33 | 2.1 | 20:57 | 2.0 | 2:07 | 0.2 | 14:40 | 0.2 | 07:09 | 19:41 |
| 12 | Tue | 9:24 | 2.1 | 21:50 | 2.1 | 3:00 | 0.2 | 15:32 | 0.1 | 07:10 | 19:40 |
| 13 | Wed | 10:15 | 2.1 | 22:41 | 2.1 | 3:52 | 0.2 | 16:23 | 0.1 | 07:11 | 19:38 |
| 14 | Thu | 11:06 | 2.1 | 23:32 | 2.0 | 4:44 | 0.2 | 17:13 | 0.1 | 07:12 | 19:37 |
| 15 | Fri | | | 11:56 | 2.0 | 5:35 | 0.2 | 18:02 | 0.2 | 07:13 | 19:35 |
| 16 | Sat | 0:24 | 2.0 | 12:46 | 2.0 | 6:28 | 0.3 | 18:53 | 0.3 | 07:14 | 19:34 |
| 17 | Sun | 1:17 | 1.9 | 13:38 | 1.9 | 7:22 | 0.4 | 19:44 | 0.4 | 07:15 | 19:32 |
| 18 | Mon | 2:13 | 1.8 | 14:32 | 1.8 | 8:18 | 0.5 | 20:39 | 0.5 | 07:16 | 19:31 |
| 19 | Tue | 3:10 | 1.8 | 15:28 | 1.7 | 9:17 | 0.6 | 21:37 | 0.5 | 07:17 | 19:29 |
| 20 | Wed | 4:09 | 1.7 | 16:27 | 1.7 | 10:17 | 0.6 | 22:36 | 0.6 | 07:18 | 19:28 |
| 21 | Thu | 5:06 | 1.7 | 17:26 | 1.6 | 11:16 | 0.6 | 23:33 | 0.6 | 07:19 | 19:26 |
| 22 | Fri | 6:00 | 1.7 | 18:21 | 1.7 | | | 12:10 | 0.6 | 07:20 | 19:25 |

Only the BEST TRADIES will do! Use Locals... For Locals... Support Locals!

SMALL ENGINE REPAIRS

ANTS REPAIRS

Whangamata-based small engine repairs & maintenance

- Chainsaws • Lawnmowers
- Ride ons • Weedeaters

121 Sharyn Pl • 021 0244 2791
ants.repairs.nz@gmail.com

LAND DEVELOPMENT



Subdivisions
Boundary Markings
Land Use Consents Topographical Surveys
Building Setout and Certifications

Contact us
0508 4 BIRCH
tairua@birch.nz
244 Main Road, Tairua
www.birch.nz

EARTHWORKS



- Bobcat & excavator
- Tight access work
- Site works
- Topsoiling
- Driveways
- Hole drilling
- Concrete prep
- Cartage

Shay 021 742 966 | www.blackhillearthworks.co.nz
info@blackhillearthworks.co.nz

IT SUPPORT



FIBRE INTERNET
now available to
order from Boot I.T.

We are the Coromandel's
only local Fibre Internet
Provider, and the ONLY
provider that offers 7 days
per week support.

Call us on 0800 242 266
to find out more.

Boot it.

PAINTER

Gavin Johnson
PAINTER & DECORATOR

Interior/Exterior Painting

Wallpapering

Cedar Cleaning and
Restoration Service

0224 552 363

brushstrokeswhangamata@gmail.com



LANDSCAPING

Beach Contractors
& Landscape Supplies

LANDSCAPING SUPPLIES:

- | | | |
|----------------------------------|---|---|
| Bark, mulch, compost and topsoil | Sand, lime chip, river stones and pebbles | Cement, builder's mix and a range of metals |
|----------------------------------|---|---|

Delivery service available

Whangamata Yard 2546 Waihi Whangamata Rd M. 027 261 1262
Waihi Beach Yard 691 Waihi Beach Rd P. 07 863 5340

AIRPORT TRANSFER

BLACK
CAB.
CO.NZ

Auckland
Airport
Transfers

\$190 for first
2 passengers

Door to door

To book call
022 689 2531

Members Only Taxi Service

CONCRETE

BROWNMORE
CONSTRUCTION
CONCRETE CONTRACTORS

Any Concrete Requirements: Slabs, driveways, patios, paths, etc
All types of concrete - colour - finish
Council Permits for Vehicle Crossings

Excavation to finished product • Saw cutting & drilling

We take pride in doing a quality job at a competitive rate

REX: 027 285 5489

P. 07 863 3364 • office@brownmoreconstruction.co.nz

www.brownmoreconstruction.co.nz

FENCING

RURAL FENCING • RESIDENTIAL FENCING
POST AND RAIL • RETAINING WALLS
POLE SHED BUILDINGS
ORCHARD BUILDS & MAINTENANCE

coastline
FENCING LTD

BLAIN TEMPELMEYER 027 784 6538
coastlinefencing7@gmail.com

PAINTER

Coastline
Property Painters

Protecting your investment Communication is everything
Interior Exterior Roofs Updates & photos as your job progresses

Call Richard Upton: 0274 884 881 / www.coastlinepropertypainters.com

BUILDING WASHING



COROMANDEL HOUSE &
BUILDING WASHING

No Mould, No Salt Pure Satisfaction

info@corowash.co.nz

Bronson Phillips 0223991130

FIREPLACES

Cosy Fires

www.cosyfires.co.nz

Your Whangamata-based gas & wood fire agents. Available for site visits from the Coromandel to B.O.P. to Hamilton.

Email sales@cosyfires.co.nz
or call Paul on 027 276 7076

OUTDOOR COVER

Covered.

- Louvres
- Privacy Panels
- Awnings
- Sails

LOUVRESYSTEMS

info@covered.co.nz 07 865 6207 or 027 497 1236

www.covered.co.nz 300 Casement Rd. Whangamata

CURTAINS / BLINDS



Specialising in:

- Curtains
- Roman Blinds
- Cushions
- Duvet Covers
- Roller Blinds
- Shutters

croft design

306 CASEMENT ROAD, WHANGAMATA
M. 0274 481 957 | E. beth@croftdesign.co.nz

CURTAINS / BLINDS

Curtains and Blinds and More
Whangamata

LOCALLY OWNED AND OPERATED

- Curtains
- Venetian Blinds
- Roller Blinds
- Roman Blinds
- Shutters
- Honeycomb Blinds

100% Mobile Service

We come to you, Free Measure and Quote

Call Louize or Gavin
on 027 4777 916

or email info@curtainsandblinds.co.nz

Use Only the Best Services in our Community! Use Locals... For Locals... Support Locals!

FRAMING



- Picture framing
- Framed mirrors
- Art installation
- Pick up & delivery

Ade Cunningham
M. 0274 929 695 or P. 07 575 9149
info@framesnz.co.nz • www.framesnz.co.nz
118 Brook Pl, Whangamata

PAINTER

Gerards Painting Services

Small jobs are my specialty!

PHONE: 021 108 5996



HANDYMAN

HANDYMAN

30 yrs experience, specialising in:

- Bathroom, deck & building repairs
- Gib fixing & plastering
- Interior /exterior painting

Please ring Rex on 021 997 428

BUILDING & LANDSCAPING

HBL HANSEN BUILDERZ

BUILDING & LANDSCAPING

COMMITTED TO EXCELLENCE
Contact us to discuss your project & a free estimate today



ADRIAN 0274 263 895 | hansen.builderz@gmail.com | HBLHomesnz
Residential | Commercial | Alterations | Additions

ARCHITECTURAL BUILDERS

HOME & Lifestyle

- Architectural Builders
- Interior & Colour Design Services
- Project Management


For trusted expertise with your building project

Katrina Jackson 027 273 0685 | Leigh Goodman 027 4475 423
info@homeandlifestyle.co.nz

LOCKSMITH

Homesafe Locksmiths & Services

ONE key to fit ALL doors!
FREE advice on your lock requirements



Ian McAuley (Macca) Owner/Operator
• 126A Tamaki Rd, Whangamata
• P 021 719 495 or 07 865 7092 • E imacca2003@yahoo.co.nz

BUILDING WASHING

HOUSE WASHING

Exterior house or commercial building wash, roof wash, fences, driveway, patios – soft-wash for best moss and lichen clean and treatment, exterior window cleaning, or general water blasting, 100m of hose so access is no problem
Prompt local service with 20 years' experience

Ph 0800 747 787 email atlasgroup@xtra.co.nz
or dial Andy direct on 027 313 4386

CLEANING



we'll take care of it

- Carpet Cleaning
- Pest Control
- Flood & Fire Restoration
- Stain Removal
- Upholstery Cleaning

07 863 8358 or 0800 225 552
whangamata@jae.co.nz




AUTOMOTIVE & BOATS



CUSTOMS & MARINE

BOAT TRAILERS, CARS, CLASSIC & HOT RODS

ONLY Repco STOCKIST IN TOWN!
ONLY HONDA AGENT IN TOWN!

Aickin Road, Whangamata (next to Bunnings)
P. 865 9073 | E. office@jcdcustoms.co.nz
Mon-Fri from 8am

BUILDER

Keith the Builder LBP

Need something done?

For maintenance, decking, fencing, repairs, interior work and all enquiries



PHONE FOR FREE QUOTE
Keith phone 0272 262 039

ELECTRICAL



Electrical Laser

"Totally Dependable"

AVAILABLE 24/7

Residential | Commercial | Heat Pumps
Fire Systems

P. 865 9309 | whangamata@laserelectrical.co.nz
NEW LOCATION: 100 Lindsay Road



KITCHEN



WHANGAMATA WOODWORKS

Specialists in design, manufacture & installation of kitchens, wardrobes & custom cabinetry

108 Lindsay Rd, Whangamata P. 865 7947 whangamatawoodworks.com

MASTERCRAFT KITCHENS

TRAVEL BROKER



Kay M Gregan The Travel Designer Ltd

TAANZ Bonded Travel Broker, CLIA Accredited Cruise Specialist

For all your travel needs:

Flights | International & Domestic Holidays | Hotels | Honeymoons
Bespoke Group Travel | Coach Journeys | Ocean & River Cruises
School Groups | Vehicle Rentals | Travel Insurance | Visa Assistance

Whangamata: +64 7 865 9568 Mobile: +64 27 337 6222
thetravelbrokers.co.nz/kaygregan
Kay.Gregan@thetravelbrokers.co.nz

JOINERY

McBeth Rd Orchard Joinery

Affordable joinery

Kitchens new or upgraded
Laundries & bathrooms
Wardrobes & storage units
Free estimates

Tony & Nicky Ball - 027 229 2255
Whangamata

Only the BEST TRADIES will do! Use Locals... For Locals... Support Locals!

BUTCHER

MEAT AT THE BEACH

Support your local Butcher!

BBO meat packs, in store made sausages, patties, tasty chops, steaks, butterflied chickens & much more.

"The home of Whanga bacon"

601 PORT ROAD, WHANGAMATA P. 07 865 7241
MON-FRI 8.30AM-5PM • SAT 8.30AM-3PM

BUILDER

MJC BUILDERS

Building with pride

- FENCING
- DECKS
- PERGOLAS
- ROOFING
- ALTERATIONS
- BUILDING REPAIRS
- CONCRETE DRIVEWAYS
- FULL LANDSCAPING



MIKE CUNNINGHAM M. 021 0677 555
E. mjc.builder.whangamata@gmail.com

TREE SPECIALIST



QUALIFIED ARBORIST

30 years experience in all aspects of tree work

- Pruning
- Felling
- Storm damage
- Hedge trimming
- Confined space dismantling
- Debris chipped
- Free quotes and more

Professional and reliable service - fully insured

Phone Greg Nicholson on 07 865 6769 or 021 133 0937
email: nicholsonsreeservices@hotmail.com

PARTY EQUIPMENT

Table & Chairs
Marquee & Gazebo's
Lighting
Bar Equipment

Tableware
Kitchenware
Cooking Equipment
Audio & Machines



Lovie 021 297 0293 / Lofty 021 364 7893
info@whangamatapartyhire.co.nz
www.whangamatapartyhire.co.nz

PODIATRY

Pedicare Services

Professional Foot Care

Alison Walkington
Registered Nurse

Home visits by appointment

Mobile 027 663 2320 or
email alison.c.walkington@gmail.com



PHOTOGRAPHY

Pete Stretch PHOTOGRAPHY



027-458-1179 peterstretchphotography@gmail.com

POOL & SPA SERVICES



MOBILE POOL & SPA CLEANING SERVICES

Sharleena Tucker ~ poolqueen@outlook.co.nz

027 316 3384
Coromandel Peninsula

WINDOW CLEANING



Your ecofriendly window cleaning service.

Mike Horton
info@purenclean.co.nz

M 021 501 324
www.purenclean.co.nz

HEAT PUMPS



We Sell and Service all Major Brands

Your heat pump specialist
On site marine & commercial refrigeration

Call today for a hassle-free quote

027 933 8599

www.reefrefrigeration.co.nz

PLUMBER

Russell CHOAT GAS & Plumbing

Whangamata

FOR ALL YOUR GAS-FITTING, PLUMBING, DRAINAGE & ROOFING REQUIREMENTS

Registered craftsman & member of Master Plumbers

M. 0274 714 869 E. CHOATS@XTRA.CO.NZ

ELECTRICIAN / DOG GROOMER



Rusty Sparks

EVERYTHING ELECTRICAL

Residential, Commercial, Data, Alarms

@ 021 800 017
admin@rustysparks.nz



@ 021 850 017
WHANGAMATA

BUILDER



SKF RESIDENTIAL SERVICES

Qualified Builder / LBP

07 865 6555 skfrs@xtra.co.nz

BUILDING SERVICES

Master Craftsman – 35 years experience

- Reasonable hourly rates
- Honest & reliable
- High quality workmanship
- References available
- Decks, fences, sleepouts, repairs, maintenance
- Mini digger with various attachments for small build projects and landscaping
- 300 & 200mm Auder tilt bucket
- 200 & 400mm Rock bucket
- 850mm bucket



Simon's Coastal Building Services

Simon Ziegler
NZTCC

PHONE 027 572 5567 EMAIL szbuilder@xtra.co.nz

BINS

Skip Bins, Wheelie Bins, Front Load Bins

Contact us today!

We can help!



0800 4 MY BIN - www.smartbins.co.nz

Proudly 100% Kiwi owned

Use Only the Best Services in our Community!

Use Locals... For Locals... Support Locals!

BOARDING KENNEL / CATTERY



SPOT X
BOARDING KENNELS AND CATTERY

Quality care and facilities in a rural setting
Office hours: 9am-12 noon and 3-5pm daily
INSPECTION WELCOME
Ph 07 865 8242 or 027 624 3890
Annette Gillatt
4km south of Whangamata on the main road

REFRIGERATION & AIR CON



TIDELINE REFRIGERATION
WHANGAMATA

- * HEAT PUMPS
- * REFRIGERATION
- * AIR CONDITIONING
- * VENTILATION

SERVICING IN THE COROMANDEL AREA
0272121994 - 0277251820
TIDELINEREFRIGERATION@GMAIL.COM
WWW.TIDELINEREFRIGERATION.COM

TREE SPECIALIST



- Tree felling & pruning
- Hedge trimming
- Stump grinding
- Fully insured
- Qualified arborist

TREECARE WHANGAMATA LTD
Contact Ben 021 827 355
treecarewhangamata@gmail.com

ARBORIST



- Professional experienced and insured arborist
- All tree work including removal / pruning
- Hedge trimming and property maintenance
- Quality firewood and smoker wood

Heath van Leeuwen 0210 838 9922
email Heathsvan@gmail.com

LAWYERS

USSHER LAWYERS
- SINCE 2007 -

We can help with all of your general legal needs

- Conveyancing if you are buying or selling property
- Sale and purchase of business assets • Commercial leasing
- Relationship property • Trusts • Wills • Enduring powers of attorney

www.ussherlawyers.co.nz | Phone 07 865 8824
We've moved - now at 123 Lindsay Rd, Whangamata

WARDROBES



WD WARDROBES DIRECT

Steve Parkinson
Central, East & South
021 0733 100
steve.parkinson@xtra.co.nz

ALSO SERVICING WHANGAMATA
www.wardrobesdirect.co.nz

Showroom Unit 2, 63 Morrin Rd St John's Auckland

LAUNDRY

WHANGA LAUNDROMAT



The only locally owned & operated laundromat in town!
OPEN 24 HOURS - 7 DAYS A WEEK
CASEMENT RD, WHANGAMATA (OPPOSITE WAITOMO FUEL)

SCAFFOLDING



- Mobile scaffolding
- Roof edge protection
- Construction scaffold

Servicing Whangamata and surrounding areas

Please ring 022 076 0160 or email whangamatascaffolding@gmail.com
102 Lindsay Road, Whangamata Est 2014

SEAFOOD

WHANGAMATA SEAFOODS
2021



112 WATTLE PLACE
PH: 027 318 7495

TYRE & BATTERY SERVICES

WHANGAMATA TYRE & BATTERY



KUMHOTYRES 7

Car tyres / Wheel alignment
4WD tyres / Tyre repair
Wheel balance
Small implement tyres
Batteries - car & marine

Phone Simon 865 7698

CHALLENGE Cnr Port & Ocean Rd, Whangamata
www.challenge.net.nz

WINDOW & DOOR SERVICES

WHANGAMATA WINDOW & DOOR SERVICES

Bryce Hall
M. 027 282 2057
Ph. 865 9714

Reglaze // Repairs // Maintenance
Retro Fit Double Glaze

whangamatawindowdoorservices@xtra.co.nz

UPHOLSTERY

WINDWOVEN UPHOLSTERY



For all your upholstery needs
• Home • Office • Boat • Caravan
Available 6 days for your convenience
Free quotes

07 865 8774
021 066 5788

HOME SERVICES

YourLocal
NZ's Trusted Home Services

Avi@yourlocal.nz - www.yourlocal.nz - 022 534 5478

We specialise in

- Exterior house wash, windows, driveways, patios, decks, fences & roofs • Commercial, residential, rural, new builds & painters prep • Pests treatment (fumigation)
- Rodents & wasps • Chimney sweeping • Roof treatments

BUSINESS FRANCHISE FOR SALE

We cover Coromandel, Thames, Waihi, Waihi Beach, Whitianga, Whangamata

CLOTHING

YUKEYS
3620

Clothing Alterations and Repairs
LADIES - MEN - CHILDRENSWEAR

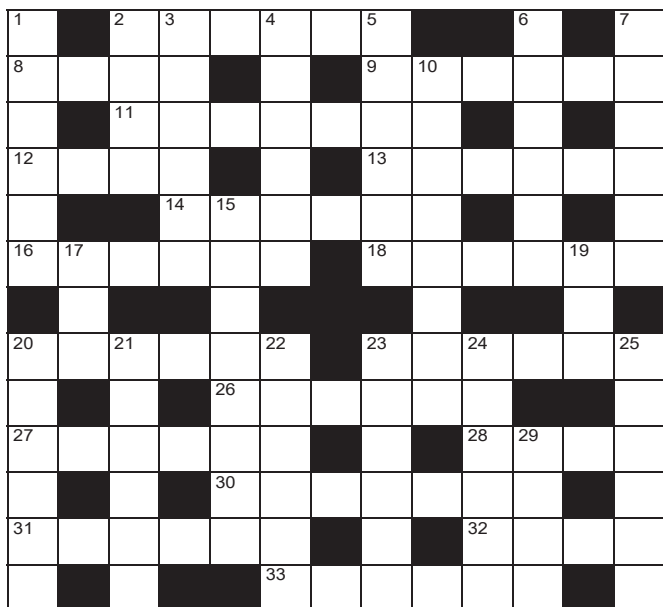
Open Tuesday to Friday 8.30am to 1.30pm
Saturday 9am to 12pm
105 Nickin Road (just off Port Road)
Whangamata
M. 021 0289 3968

ADVERTISING



Contact Jennie
Whangamata NEWS
Phone 021 0232 1661
whangamatanews@gmail.com
Secure your space on here today!

QUICK CROSSWORD



- Across: 2. Standing (6), 8. Woodwind instrument (4), 9. A way out (6), 11. Equine cobbler (7), 12. Reveal secrets (4), 13. Easy to chew (6), 14. Indifference (6), 16. Mythical creature (6), 18. Food establishment (6), 20. Catch fire (6), 23. Adjacent (6), 26. Yearbook (6), 27. Coats with bread (6), 28. Leave out (4), 30. Bags (7), 31. Pierce (6), 32. In good time (4), 33. Trip for small task (6)
Down: 1. Prohibit (6), 2. Settee (4), 3. Infusion pouch (3,3), 4. Plaid (6), 5. Boil with anger (6), 6. Interfere (6), 7. Off course (6), 10. Neither black nor white (4,4), 15. Easily moved (8), 17. Equip with sails (3), 19. Stick (3), 20. Carve (6), 21. Castrate (6), 22. Make certain (6), 23. Fast food sandwich (6), 24. Advertising phrase (6), 25. Prolong (6), 29. Repair (4)

SOLUTIONS

SUDOKU grid with numbers 1-9 placed in various cells.

DECODER grid with letters and numbers 1-26, including the word 'WAY'.

CRYPTIC grid with numbers 1-23.

CROSSWORD clues and answers for the crossword puzzle.

SUDOKU

Fill the grid so every row, column and 3x3 box contains the numbers 1-9

Sudoku grid W197 with numbers 1-9 placed in various cells. Difficulty: EASY

Sudoku grid W198 with numbers 1-9 placed in various cells. Difficulty: HARDER

DECODER

Each number below represents a different letter. Find the correct letter for each number by working out the word from the letters given. To keep track, cross the letters off on the grid below.

Decoder grid with numbers 1-26 and some letters filled in, including 'WAY'.

Decoder grid with letters A-Z and numbers 1-26.

CRYPTIC CROSSWORD

Cryptic crossword puzzle grid with numbers 1-23.

All puzzles © The Puzzle Company

- Across: 1. Saw Mick Jagger chuck something from the stage – but it didn't go far (1,6,5), 7. Cocaine comes strangely from the sea (7), 8. Disassemble? No – not suitable (5), 9. A Swiss old lady too, so to speak (alternative spelling) (5), 10. Speech venue (7), 12. Instrument publications (6), 14. Goes up around the room (6), 17. Left over on French addition (7), 19. Soyas? – If you like (3-2), 21. Mother Alma? (5), 22. Leaves of aloe, & fig for example (7), 23. Alice, Owen & Dan went for a tour around the Island (3,9)
Down: 1. No trick from the reproduced "Rocky Mountains" but artist unknown (9), 2. Rated footstep (5), 3. Anne & Ken are material people (7), 4. Ben leaves the tumble-down balconies for the party (6), 5. Dog dog (5), 6. Syncopate to be a little different (7), 11. The characters definitely don't clean up their act or acting (4,5), 13. A twist of the neck? (7), 15. Made a one off move on the board (7), 16. Handy if you handle it when not empty reportedly (6), 18. Beverly, Rick and Sam partly reel off a short poem (5), 20. Desire what y' make (5)

Advertisement for Husqvarna lawn mowers. Features images of TS142T, TC242TX, and TS142TXD models with prices and savings. Includes the Prescotts Garages logo and contact information for Shaun Prescott, Sales Manager.