

Whangamatā & Waihi NEWS

ISSUE 167 - 5 JUNE, 2026

FREE COPY

PLEASE TAKE ONE!

Cliffhanger

- Coach praises defence

PAGE 19



Photos by Mark James



BY LOCALS, FOR LOCALS, ABOUT LOCALS.

WE WELCOME YOUR CONTRIBUTIONS!

Email WhangamataNews@gmail.com • Facebook [@whanganews](https://www.facebook.com/whanganews)

Taken home by bach owners and visitors to everywhere

SEE ALL OUR EDITIONS LIVE AT WWW.WHANGAMATANNEWS.NZ

EDITORIAL & MEDIA SALES:
JENNIE BLACK - 021 0232 1661

INDEPENDENTLY OWNED

DELIVERED TO WAIHI BEACH, WAIHI, WHIRITOA, WHANGAMATĀ, ONEMANA, HIKUAI, PAUANUI & TAIRUA

\$85 million boost for Coromandel resilience

Coromandel MP Scott Simpson has welcomed major new investment to strengthen key state highways across the Coromandel, improving resilience, reducing disruption, and helping keep communities connected during severe weather events.

The Government has confirmed funding for resilience upgrades on State Highway 25 and the replacement of the Kirikiri Stream Bridge on State Highway 26 as part of its \$400 million package of state highway resilience projects announced in Budget 2026.

“Coromandel communities know better than most how disruptive severe weather can be,” Mr Simpson says.

“Recent weather events have caused slips, flooding and road closures across the peninsula, cutting off communities and making it harder for people, freight and visitors to get where they need to go.”

SH25, which carries up to 5,000 vehicles a day, is the main road connecting communities around the Coromandel Peninsula.

The SH25 resilience programme has a high-level estimated cost of around \$20 million and will target up to 11 high-risk locations vulnerable to slips, rockfalls and drainage issues.

“SH25 is the road that keeps the Coromandel connected. When it closes, there are very limited alternatives, and those routes can also be vulnerable during severe weather.

“This investment will help reduce the risk of closures and improve reliability for the people and businesses that rely on the road every day.”

A second project will see the replacement of the Kirikiri Stream Bridge on SH26 near Kōpū, with a high-level estimated cost of around \$65 million.

The existing bridge is more than 80 years old and vulnerable to flooding. The replacement bridge will be raised by around three metres, improving flood protection from what is currently a one-in-five-year event to a one-in-100-year event.

“The new bridge will help keep this important route open during severe weather while also supporting wider flood protection work in the area.

“It will improve access for local communities, reduce disruption for motorists, and provide greater resilience for nearby homes, businesses and farmland.”

Mr Simpson says the investment is part of the Government’s plan to fix the basics and build the future.

“Budget 2026 includes major investments to strengthen roads and other critical infrastructure, helping ensure New Zealand is better prepared for future weather events.

“We can’t stop severe weather from happening, but we can be much better prepared for it.

“For the Coromandel, that means investing in the roads and bridges that keep communities connected, support local businesses, and underpin the region’s tourism economy.”

Further work will continue to refine the final scope, design and delivery programme for both projects.

- *Authorised by Scott Simpson MP, 614 Pollen St, Thames*

Whangamata Community Library – Thank You

We extend our sincere thanks to everyone who assisted with the move to our new location. This has been a significant undertaking. Although the collection will be smaller than previously, we have carefully selected 6,000 popular titles, cleaned them, packed them, transported them, and re-shelved them at 800 Port Road. This has only been possible through outstanding community support,

and we thank the Lions, our partners, volunteers, book group helpers, local tradespeople, and of course our library staff.

While there is still work to do with the remaining collection, we look forward to welcoming you back from 4 June, with opening hours of 10am-4pm daily and 10am-12pm on Saturdays.

- Jacqui James, Chairperson



FLOORINGXTRA.CO.NZ

FLOORING TO SUIT YOUR STYLE

CARPET • VINYL • TIMBER • LAMINATE • RUGS

Phone or email us! We're measuring & laying! View samples instore!

WHANGAMATA FLOORING XTRA

Whangamata | 636 Port Road | 07 865 8562 | whangamata@flooringxtra.co.nz

Scott Simpson MP for Coromandel

Contact me anytime
0800 550 330 • scottsimpson.co.nz
mpcoromandel@parliament.govt.nz
scottsimpsonmp



National 

Authorised by Scott Simpson, Parliament Buildings, Wellington.

LIVE RUGBY
Quarter Finals Friday 5th June 7:05pm
& Saturday 6th June 7:05pm

Round the World Theme
Cucina Italiana
Italian Cuisine menu
First 3 Wednesdays of June

Happy Hour
EVERY SUNDAY 3PM-6PM

KITCHEN OPENING HOURS
Breakfast: Saturday & Sunday 8am-11:30am
Lunch & Dinner: 12pm till late everyday

LADIES Night WEDNESDAYS

MEMBERS HAPPY HOUR
4.30PM - 7PM

ESPRESSO MARTINI'S, APEROL SPRITZ, MARGARITA'S

COCKTAILS SHAKEN
BUBBLES POPPING
WINE FLOWING

MID WINTER CHRISTMAS

3-course Dinner

SATURDAY, 25 JULY
&
SUNDAY 26 JULY
(LIVE MUSIC)

Let's celebrate together!

WHANGAMATA OCEAN SPORTS CLUB

P. 07 865 8704 • www.oceansports.co.nz • End of Port Rd at wharf  @Whangamata-Ocean-Sports-Club-New-Page

Whangamata Police Report

A busy few weeks for the team while I have been on holiday. Good to be back.

We've had a few critter visitors to town in recent weeks haven't we! A very good reminder to be mindful of personal and physical security, locking valuables away, not leaving keys in cars and the value of a really good quality and well placed CCTV system.



Several vehicles were broken into around town recently. It appears a young group of teens are responsible from out of area. They were eventually caught up with over in Waihi in the early hours of the morning.

A recent incident in Whiritoa sparked a fairly large Police response. Police identified a known male and were actively seeking his whereabouts. He was eventually located at a Turua address where refused to comply with police. With the Armed Offenders Squad help, he was encouraged out into Police custody.

A local male who was caught with firearms in his vehicle not so long ago is due to be sentenced on those charges. He has been remanded in prison custody since being caught.

- Sergeant Will Hamilton, Officer in Charge, Whangamata Police

Waihi Police Report

Vehicle Crime on the Rise

We've seen a bit of a surge in cars going on 'unscheduled adventures' without their owners lately... unfortunately, not the fun kind. Help keep your car where you left it by:

- Locking it (yes—even at home, even “just for a minute”)
- Removing valuables (if it looks like treasure, someone might go hunting)
- Using steering wheel locks or immobilisers
- Making sure your insurance is up to date
- Think of it this way—if it's harder to steal than the car next to it, you're already winning

Local Incident - Dental Clinic Fire

Emergency services recently responded to a fire at a local dental clinic. Thankfully no serious injuries were reported (no one wants that kind of filling).

Police are investigating the cause, and we'd really appreciate any information from the public. If you saw anything unusual, even something that seemed minor at the time, please let us know—it could make all the difference.

Good News - Waihi College Success

Now for something to smile about...

A huge shout out to Waihi College, who have taken out 1st place in the Blue Light PCT Challenge—an awesome result and well deserved!

They'll be heading off to the national finals later this year, so we'll be backing them all the way. No pressure team... but we fully expect a trophy



Road Safety

A few friendly reminders:

- Take it easy on the roads—arriving late is better than not arriving at all
- Expect delays and bring your patience (it's just as important as fuel)
- Stay focused, don't drive tired, and definitely don't drive impaired
- Allow extra time so you're not tempted to test your 'race car driver' skills

Let's all look after each other out there—and remember, the goal is to get to your destination, not to win the journey

Stay safe, Waihi!

- Rachel Gillingham, Community Constable, Waihi / Waikato East

Curtains and Blinds and More

CURTAINS

ROLLER SHEERS

WHANGAMATA

SHUTTERS HOME BACH

BEACH PAUANUI

VENETIAN BLINDS

WHIRITOA SURF

THERMALS BLOCKOUTS

Contact Louize or Gavin

027 4777 916

FREE NO OBLIGATION MEASURE AND QUOTE

email info@curtainsandblinds.co.nz

www.curtainsandblinds.co.nz




BOOF BOLAND
PAINTER & DECORATOR

P O Box 410, Whangamata 3643
M: 0274 367 254
E: jenboof@outlook.com




Whangamata coming together as needs rise

Our local community services are seeing a clear reflection of the current economic and social climate, with a growing need for support in Whangamatā and across our surrounding communities.



volunteers have been working hard to ensure help remains available. While rising demand signals challenging times, the strength of community spirit has been equally evident. A steady supply of winter blankets, hand-knitted items, children's clothing and food is currently available to support our community, alongside ECCST's social services.

The Eastern Coromandel Community Services Trust (ECCST) has seen a noticeable rise in demand across several areas. Requests for food parcels have increased by 41 percent, while counselling referrals are up 31 percent this quarter (2026) compared with the same period last year (2025). Most concerning, family violence episodes and referrals have increased by 45 percent over the same period, highlighting the importance of accessible wrap around support and early intervention.

The Trust has proudly supported the Opoutere School breakfast club for over a year, ensuring students start their day nourished and ready to learn. In addition, newly secured funding will allow continued assistance for elderly residents with shopping and transport, helping older members of the community maintain independence and wellbeing.

Medical drives are in high demand across the community, a direct result of increased fuel costs placing added pressure on households. This essential work continues thanks to our dedicated group of volunteers, whose commitment is nothing short of vital.

Volunteers, donors, and supporters continue to step up to ensure help reaches those who need it most. ECCST encourages anyone who may need assistance to reach out and welcomes those who are able to contribute to help ensure services continue to support families throughout the winter.

In response, ECCST staff and

Contact ECCST:
505 Port Road, Whangamatā
07 865 7065
info@communityservices.org.nz
www.communityservices.org.nz

Community library re-opened



Whangamatā Library, at Hunt Road, re-opened on Thursday, 4 June.



More than 6000 books are available to members now that the Whangamatā Library has reopened.

Despite large numbers of volunteers assisting in the reopening, we need a couple more days to complete the transition.

Library committee chairperson, Jacqui James, thanked the "immeasurable support from the local Lions, volunteers, co-opted

husbands and local tradespeople".

While the new site is smaller, Jacqui said, the library staff and volunteers will have most library facilities available and operating. If you have books at home drop them off to the new site.

She extended her thanks and appreciation to all who have assisted with the relocation and getting the new site 'fit for purpose'.

Jacqui also noted appreciation to Coromandel Insurance Services, the Whangamatā Community Board and Thames Coromandel District Council.

- Whangamatā Library Committee

Full Mechanical Repairs, Lubrications and Services, WOFs, Tyres, Tune ups, Batteries, Wheel alignments, Diagnostics.

Scan Tool.

AA Breakdown services

First Assistance Breakdown services

P. 07 865 9435 • 201 Aickin Road, Whangamatā

M. 027 608 5770 • E. Info@autosupershoppewhangamatā.co.nz

The Eye Place

Formerly O'Hagan Vision Care

For all your eye care needs, including glaucoma checks, contact lenses, safety glasses & fashion frames.

Open Wednesdays & Fridays

www.eyeplace.nz • 07 865 0007 • 612 Port Road

SASKIA & CO

— HAIR • COLOUR • STYLE —

PROUDLY CARING FOR WHANGAMATĀ HAIR.

COLOUR

HIGHLIGHTS

EXTENSIONS

NANOPLASTY

BOOK YOUR APPOINTMENT TODAY

☎ 021 045 1236

@saskia.co.nz
 701 PORT ROAD, WHANGAMATĀ

Relax. Refresh. Renew.



Banks & politics

Richard Prebble (NZH 24/5/26) offers us a timely history lesson on the ownership of banks and their governance. Both timely and pertinent in light of the NZ First Party's stated intention to campaign on a policy to buy the BNZ.

Prebble highlights the chequered history of that bank when the cornerstone shareholder was the New Zealand Government. As with all aspects of commerce, if risk is not managed well the pitfalls can prove to be very expensive indeed. Taxpayers were forced to swallow a bitter and costly pill to bail out the BNZ over three decades ago.

Both nationally and globally, banking industry failures can have a devastating impact on economies. A more recent example was the global financial crisis of 2008/2009.

One of the great weaknesses of democracy is the promotion of populist policies in the pursuit of voter support. However, they often fail to provide a balanced analysis of the perceived benefits versus the inherent risks.

The financial strength of trading

banks and their profits may be distasteful to some people but it's a bit like the challenges of growing old; it's better than the alternative.

George Williams
WHANGAMATĀ

Community Boards Swapped a Ferrari for a Skateboard

Tuesday last week, Thames-Coromandel District Council (TCDC) voted 7-4 to replace our Community Boards' Terms of Reference with a new "Accord." Councillors Rasmussen, Brljevic, Ashman and Smith opposed it, and RIGHTLY so.

The 2019 Terms of Reference, adopted by a previous council and never repealed, give Community Boards genuine local decision-making authority over harbour facilities, parks and reserves, community halls, libraries, swimming pools, cemeteries, local roading, local economic development, community grants and

local strategic planning. They have sat on the shelf, unimplemented, for six years — not because they failed, but because successive councils chose not to give them effect.

The Accord replaces those powers with the authority to approve street names, sign off on training, and allocate small grants - all within Council policy, guidelines, and budget. Everything else is reduced to "feedback," "input", and "advice." That is not delegation. That is what the Local Government Act already requires (s 52).

One councillor put it bluntly during the debate: "We have just swapped a Ferrari for a skateboard". I agree. Cr Alison Smith voted against because "the closer a decision is made to the community it affects, the better the outcome." That principle is the heart of local democracy, and the Accord walks away from it.

The argument that the Terms of Reference "did not deliver" misses the point. A document cannot be delivered if it is never picked up. Six years of non-implementation is an indictment of the Councillors and staff, not of the delegation.

Whangamatā currently has a discretionary budget of around \$90,000. When I stood for Mayor last year, I campaigned for Community Boards to receive up to 5% of the district rate take, which, for our board, would mean roughly \$1.2 million, with matching responsibility for local assets and services. That is what genuine local empowerment looks like.

The Accord is the opposite: it centralises further control in Thames, channels every Board enquiry through Governance Services, and gives Boards "speaking rights" rather than decision-making rights.

Amalgamation is coming. The stronger our local representation now, the better placed our communities will be when boundaries are redrawn. We have just made ourselves weaker.

The Accord is up for review in six months. If you want your voice back, tell your Board chair, your ward councillors and the Mayor loudly, and in writing.

Patrick Kerr
WHANGAMATĀ

Join Us AT THE WHANGAMATA CLUB

Quiz Night

at the Whangamata Club

Quiz, Laugh, Win - Repeat Every Fortnight at the Whanga Club!

6PM THURSDAY

Happy Hour from 5pm - 8pm
Prizes and Giveaways
'Spin the Wheel'

THURSDAY 4 JUNE

THE GOOD ONES

SATURDAY 6 JUNE

7:00PM

THE WHANGAMATA CLUB

Toucan...

Cause two Can!

Award Winners

Dave Ewart Karen Davy

SAT 20 JUNE 7:00PM

OPEN DAILY FROM 11AM

BISTRO

Monday - Friday from 3pm
Saturday & Sunday from 12pm

DINNER MENU

From 5pm daily

RESTAURANT

Friday to Sunday from 5:30pm

404 PORT ROAD

Facebook.com/thewhangclub

www.whangamataclub.co.nz

P. 07 865 8705

Best of British a hit

The Whangamata Theatre Society raised the roof with their latest production - **The Best of British**. Running for 8 shows at the Whangamata Memorial hall, the 30 strong cast performed to sell out crowds. With cabaret style seating, the show was interactive and highly entertaining.

Directed by Denise Boston, the show took the audience from the 60s right through to the 90s. With nods to music, comedy, film and theatre, there was something for everyone. The show was Denise's directional debut for the Whangamata Theatre Society. Supported by Lisa Dorreen, Denise's vision for an immersive theatre experience came to life.

The youth cast of girls from 8-15 years danced and sang their hearts out with energy and huge smiles. Highlights were the Bananarama number one Venus and hits by the Spice Girls. The audience were transported back to their youth with a Famous Five skit complete with Timmy the dog. Fifteen year old Jenna Doreen wowed the audience and earned standing ovations with a solo of Memory from Cats.

The adult cast were equally impressive. Tracey Blake and Jude Briton did an incredible take off of Patsy and Eddie from the 90s comedy Absolutely Fabulous. A comical sketch from Are You Being Served featuring Mardi O'Shea as Mrs Slocum topped off the comedy offerings.

Sandie Murray brought the house down as Annie Lennox with her perfect rendition of hit singles Sweet Dreams and Walking on Broken Glass. A number of well known locals also took to the stage, providing top notch entertainment. For the finale, the entire cast paid tribute to Queen with a medley of hits.

Whangamata Theatre Society would like to thank Belinda Lima for her fantastic choreography, Jeanette Winslade and Jocelyn Moore who did a wonderful job on costumes, the tech team, front of house, the hair and make up team and everyone who worked tirelessly behind the scenes to bring this highly polished show to our community.

Photos by Katrina Brickwood



Why the Community Board Accord is a big step backwards

On Tuesday, May 26, Thames-Coromandel District Council voted 7-4 to adopt a new Community Board Accord, replacing the 2019 Terms of Reference (ToR) governing Council's relationship with our five Community Boards.

The Mayor used meeting rules to close debate before all councillors had spoken. Cr Alison Smith, who voted against the Accord, was among those prevented from putting her reasoning on the record. That alone should concern anyone who values open local government, whichever side of the argument they sit on.

The Accord has been presented to ratepayers as a breakthrough — a new relationship, a reset, a commitment to work together. I have read both documents carefully, and it is none of those things. On any honest comparison, it substantially cuts the authority delegated to Community Boards, dressed up in the language of partnership.

ToR Facts

The 2019 ToR, with a minor 2024 amendment on the discretionary fund, delegate to Community Boards authority over twelve activity areas: harbour facilities, parks and reserves, community centres and halls, libraries, airfields, swimming pools, public conveniences, cemeteries, community grants, local strategic planning, local roading, and local economic development. Delegations enforceable under s 52(f) and

Schedule 7, clause 36C(4) of the Local Government Act 2002 (LGA).

Within Local Government New Zealand's framework, the ToR sit between Models 2 and 3: voice, advice, and delivery, moving into shared governance. The Accord, by contrast, is squarely Model 1: voice plus advice. The lowest rung on the ladder.

What the Accord actually delegates

The list of genuine delegations is startlingly short.

Essentially: Boards may authorise members' conference attendance within budget; allocate community grants within Council policy; approve street and park names in line with policy; and approve bus stop design and location, subject to staff advice. That's it!

Everything else —parks design, property decisions, hire rates, transport priorities, economic development—is reduced to "feedback," "input," "recommendations," or "advice."

These are not delegations at all; they are statutory functions every Community Board already holds under s 52 of the LGA. Calling them concessions does not make them so.

"The ToR did not work" is the wrong diagnosis

Cr John Freer, voting in favour, says the 2019 ToR "simply have not

delivered what our communities need" — six years of lived experience. Other supporters repeat this argument, and it deserves a direct answer.

A delegation does not "deliver" anything on its own. It is a legal instrument authorising a Board to act. If Council will not implement it, or Boards are unaware they hold it, the document gathers dust.

That is exactly what happened: some Board chairs were reportedly unaware of the 2019 ToR until recently. The remedy for a delegation that has not been used is to use it, not surrender it.

Centralisation by another name

Look at the Accord's communication and decision-making provisions. Every Board enquiry flows through Thames-based Governance Services. Every staff report requires the Group Manager's sign-off before reaching a Board agenda. Disputes escalate to the Mayor, then to a panel he may appoint, and potentially a mediator. Chairs may attend full Council meetings and speak only when invited, on matters relevant to their ward.

These are not empowerment terms but gatekeeping arrangements. The centre of gravity stays firmly in Thames, codified by the Accord.

What real empowerment would look like

When I stood for Mayor last

year, I campaigned on allocating up to five per cent of district rates to Community Boards. For Whangamatā, that would lift our discretionary budget from around \$90,000 to roughly \$1.2 million.

Boards would take greater responsibility for local assets — the harbour, the pool, our reserves, halls and streets. The principle is the same one that drove this district's original Community Empowerment model more than a decade ago: the closer a decision is made to the community it affects, the better the outcome tends to be.

This is not radical. It is what the 2019 ToR was drafted to enable. The Accord moves the opposite way just as we should be strengthening local representation, with amalgamation on the horizon. Weaker boards will fare worse when boundaries are redrawn.

Six-month review

The Accord commits to a six-month review. We must ensure it is substantive, not a token gesture: test the Accord against the 2019 ToR on every delegated activity, and hold our Board chairs to account. Reinstating the ToR — properly resourced and implemented — must be an option!

Residents who want their voice back should stay in regular contact with their ward councillors and Board chair. The Mayor calls the Accord a living document. Let us hold him to it!

— Patrick Kerr, Whangamatā

SHOULD WESTERN BAY MERGE WITH OTHER COUNCILS?



For more information and to provide feedback online, scan the QR code or visit:

yourplace.westernbay.govt.nz



Western Bay of Plenty District Council

Councillor not prepared to go backwards on Community Boards

Thames Coromandel District Councillor, John Freer, says now that Council and Community Boards had agreed on a new Accord, boards could get on and do the job they were elected for.

Cr Freer says he was disappointed not to have the chance at this week's council meeting to put forward his reasons for supporting the new Accord and is now setting those reasons out for the residents of his Tairua-Pauanui and Whangamatā Ward.

"I feel strongly about this, and I owe it to the people who elected me to explain why I voted the way I did," Cr Freer said.

The statement comes after Mayor Peter Revell, using council meeting rules, stopped the debate which prevented some councillors from having their say on what had become a controversial agreement between council and the community boards.

"In the lead-up to the vote there was a strong campaign against the Accord, including from former Deputy Mayor Terry Walker, who was on Council for the entire period the 2019 Terms of Reference were in place.

"During those six years, frustration from Community Boards across the district grew, rather than eased. That is the record, and it weighed heavily on my thinking."

"Therefore, I was not prepared to go backward to go forward with this," Cr Freer says.

"Two things determined whether I would support the new Accord or stay with the old terms of reference put in place by a previous council.

"First, of the five Community Board chairs, four supported the Accord and one abstained. These are the people elected to lead our boards.

"When that many of them, after months of engagement, say a document is good enough to proceed with, councillors should take that seriously.

"Second, the 2019 Terms of Reference simply have not delivered what our communities need. That is not opinion — it is the lived experience of six years."

Cr Freer said the Tairua-Pauanui and Whangamatā boards had both been strong advocates for their communities and wanted to be stronger still.

"Our boards have been vocal — and

rightly so — on issues like the state of local council buildings, mowing of reserves, annual planning and flood protection. These are the things that matter to people on the ground, and our boards have too often felt they were not being heard.

"The Accord directly addresses that. It commits Council to early consultation with boards on decisions affecting their areas, reliable staff support, regular Mayor and Chairs meetings, clear timeframes when differences arise, and a dispute resolution path. The Terms of Reference document addressed none of this and was never designed to.

Cr Freer says he received several emails and calls urging him to retain the existing Terms of Reference.

"Those views came from people who care about our communities, and I respect that. After weighing them carefully, I reached a different conclusion, and I wanted residents to hear my reasoning directly."

Cr Freer was one of several people responsible for establishing an alliance between Coromandel Peninsula residents, community groups and ratepayer associations in 2024, over concerns local communities and boards were not

being appropriately supported and utilised by the then council.

"Back then I recall having sat in the Thames Coromandel council chambers with representatives of residents and ratepayers' groups from around our district, meeting with councillors when the terms of reference were discussed as a mechanism to improve relations - but still, until the last elections, the lack of engagement between Council and Boards continued.

Cr Freer said the Accord also came with a built-in commitment to review.

"A full review is locked in at six months. That gives us the chance to test how it is working, hear from boards and communities, and adjust where they are needed.

"This is not a document to be set in stone, it's a living document that will evolve over time to meet the needs of our communities.

"You don't drive down the road by looking in the rear-view mirror. We have a chance now to build something that works for our communities — and that is why I support this change."

- Supplied



AUCTION

17 Governors Heights, Whangamata

Capturing sweeping views, this effortlessly refined property is the ultimate family entertainer's dream. At the heart of the home, a light-filled open-plan living area and a designer kitchen provides incredible space for gathering, flowing seamlessly into a spectacular private oasis. Complete with a heated saltwater pool, spa, and covered entertaining space, the manicured grounds boast fruit trees, triple-car garaging, and ample parking for boats or motorhomes.

rwwhangamata.co.nz/WHA30881
Golden Beach Realty Ltd Licensed (REAA 2008)

4 3 2 1 3 1 5865

Auction
04 July 2026 at 1:00pm
503 Port Road, Whangamata
(unless sold prior)



Jos Kennings
021707533
jos.kennings@raywhite.com



Sarah Kennings
021707544
sarah.kennings@raywhite.com

We bring the *whole* team.

John Bertrand Collectables Are Buying in Whangamata on Monday 8th June

Once again, the gold and collectables buyers from Wellington company John Bertrand Collectables are visiting Whangamata on Monday 8th June. Mr Tony Grant from the company says, "If you are downsizing or wanting to dispose of things because they no longer serve any purpose to you or your family bring them in". "This will be a great opportunity to have any items you want to sell assessed by our buyers" said Mr Grant. Particularly wanted are Gold and Silver (in any of its forms) and Collectables such as Coins, Banknotes, War Medals, Old Wind-up Watches and other interesting Small Collectables.

"We are keen buyers, especially of the items in the list below" said Mr Grant. "Nothing is too small for our consideration. We are just as happy buying 1 item as we are buying 1,000 items" he said. The buyers will be in Whangamata on Monday 8th June (see details below). As Tony Grant points out "If you are in doubt about any items you may wish to sell, bring them along for an instant appraisal."



Mr Anthony (Tony) W. Grant

Fellow of the Royal Numismatic Society of New Zealand Incorporated
Director and Buyer
John Bertrand (Collectables) Ltd
Author of the John Bertrand NZ Coin & Banknote Catalogue

Gold & Silver At Historically High Prices

During these uncertain times we have seen a sharp increase in the price of precious metals. The gold price in New Zealand is at near record levels so gather up all your unwanted items and take them along to the buyers. Tony Grant says "We can buy gold items in all forms, including Jewellery (Rings, Chains, Brooches etc), Coins (Sovereigns and the like), Alluvial (River Gold), virtually anything, even Gold Teeth! We also need all Sterling Silver including Cups, Tea Services, Cutlery and Old Coins" he said.



Interesting Small Collectables Wanted

The buyers from John Bertrand (Collectables) Ltd, visiting Whangamata on Monday 8th June, are happy to look at any interesting items, for example vintage pocket and wristwatches such as Rolex, Men's Omega, Breitling and gold watches etc. Also wanted, pre 1920's picture postcards, Maori and Pacific artefacts, old fountain pens and other small antique or historical items.

"If you have something unusual which you would like to sell, please bring it into one of our venues, we would like the chance to at least have a look at it" said Tony Grant, buyer for the Company. "We will consider anything which may be of interest to a collector" he said.

Some Big Dollars in Early Banknotes

Early New Zealand Banknotes dated before 1932 are currently fetching big money! This is according to Mr Tony Grant, author of the *John Bertrand New Zealand Coin & Banknote Catalogue*. Mr Grant is in Whangamata on Monday 8th June on a buying trip for John Bertrand (Collectables) Ltd and would be very keen to see any of these issues. "We will pay at least \$300 for any undamaged Ten Shilling or One Pound

banknote from a New Zealand trading bank dated 1932 or before.

Denominations of five pounds and higher would be worth from \$700. "Any banknote dated prior to 1900 would be worth at least \$1000" said Mr Grant.

Also purchased are any Reserve Bank of New Zealand pre-decimal issues, especially 50 Pound notes. All overseas banknotes are also wanted, especially early Pacific Island issues.

Collectors Need War Medals

Currently, throughout NZ and the world there is a big demand by collectors for war medals. These cover all wars right through from the New Zealand Land Wars and the Boer War, to the First and Second World Wars and the later Korea and Vietnam conflicts. New Zealand Servicemen and Women first served overseas in the Boer War in South Africa around 1900 and the war medals awarded for this service are needed by the buyers, as are any other Medals from early New Zealand and the New Zealand Wars.

General service medals from both the First and Second World Wars will also be purchased, but as can be imagined these were awarded in fairly large numbers. "If a group of medals has any special award for bravery such as the Military Medal, Military or Flying Cross or other medals for Distinguished Conduct or Meritorious Service, these can add great value to a group" stated Mr Tony Grant, buyer for John Bertrand (Collectables) Ltd. "Many families have old medals, some dating back to early Imperial days, that they are not sure what to do with. These are better off in the hands of collectors who will look after them. We will be happy to look at any war medals whatsoever, just bring them in to venues" he said.

Old Coins Can Toss Up a Rarity

Do you have a bunch of old coins sitting around in your drawers and cupboards? You just never know what rarities may be lurking there. The advice from Tony Grant from John Bertrand (Collectables) Limited is to "bring them in and let us have a look". "No need to sort anything out just bring them in 'as is' and please don't clean them! We can go through coin accumulations and collections fairly quickly" he said. The buyers are particularly keen to buy pre 1946 New Zealand Silver Coins and World Silver Coins. "In any event we will buy All Coins," said Mr Grant.

JOHN BERTRAND (COLLECTABLES) ARE BUYING NOW!!

OLD GOLD

- Unwanted Jewellery or Broken Rings
- Gold Chains
- Gold Watch Cases
- Alluvial (River) Gold
- Dental Gold
- Gold Coins
- Gold Racing & Trophy Cups



COINS

- All Gold & Silver Coins
- Gold Sovereigns
- Gold Half Sovereigns
- NZ Silver Coins 1946 & Before
- Also wanted NZ & World Coins after 1946
- Australian Silver Coins to 1963
- English Silver Coins to 1946
- NZ 1935 "Waitangi Crown"
- USA Coins up to 1964
- Old Collections & Accumulations of World Coins
- Modern Collector's Coins & Sets
- NZ Reserve Bank Sets



BANKNOTES

- NZ & Australian "Trading Bank" Notes pre 1932 (e.g. Bank of New South Wales, Bank of NZ etc)
- Reserve Bank of NZ Pre-Decimal Notes
- Any £20, £50 or £100 Notes
- Hong Kong & Malayan Banknotes
- Australian Pre Decimal Notes
- Australian "Star" Notes
- Early Fijian and Samoan Banknotes
- NZ Traders Promissory Notes (1840s)
- NZ Government Debentures
- NZ Banknotes overprinted for use in Fiji, Cook Islands etc
- Postal Notes
- All other World Banknotes



GOLD & SILVER

- Racing Cups
- A&P Show Cups
- Sports Cups
- Presentation Keys & Trowels
- Show Pieces
- Sterling Silver Tea Sets
- Sterling Silver Cutlery
- Scrap Gold & Silver

No EPNS or Silver Plated items Please

WRIST & POCKET WATCHES

- Gold & Silver Pocket Watches
- Any Rolex Watches
- Omega Gents Watches
- Any Breitling, Jaeger Le Coultre, Vacheron & Constantin, Patek Philippe, or IWC Watches
- Moon Phase Watches
- Chiming or Alarm Watches (Pocket or Wrist)
- Military Watches
- Divers Watches
- All other pre 1950s wind up watches (parts value only)

No Quartz or Battery Operated Watches Please



TOKENS

- NZ & Australian "Tradesmen's" Tokens
- NZ Transportation Tokens
- Railway Passes
- Tram Tokens (not Dunedin Tramways)
- Presbyterian Church Communion Tokens
- Bread Tokens
- Theatre, Cafe, Discount Tokens etc
- Any other tokens relating to early New Zealand

COLLECTABLES

- Albums & Accumulations of Pre 1920s Postcards (used or unused)
- Old Fountain Pens
- Small Chinese & Japanese Antiques
- Maori & Pacific Artefacts



No item too small for our consideration

WAR MEDALS ETC

- The New Zealand Wars & Boer War Medals
- 1st World War Medals
- 2nd World War Medals, Stars etc
- Orders and Decorations
- Korea & Vietnam Medals
- Antarctic or other Polar Medals
- Fire Brigade Medals
- Lodge Medals
- Shooting Medals
- Military Badges and all other Military Medals
- Gold returning Fob Medals or "Tokens of Honour" from residents of small town New Zealand

HISTORICAL MEDALS

- A&P Show- Gold, Silver & Bronze Medals
- Commemorative Medals & Medalets
- Prize Medals (Gold & Silver)
- Sports Medals (Gold & Silver)
- Life Saving Medals
- Shipwreck Medals
- Coronation Medals
- etc, etc, etc



JOHN BERTRAND (COLLECTABLES) LTD

OUR BUYERS ARE IN YOUR AREA ON MONDAY 8TH JUNE

WE WANT TO BUY - CASH-IN NOW

WHITIANGA	Mon 8 June	Whitianga Baptist Church, 112 Cook Drive	9 am to 10.30 am
TAIRUA	Mon 8 June	Tairua Rugby Club Old Gym, 3 Tokoroa Road	12 noon to 1.30 pm
WHANGAMATA	Mon 8 June	Whangamata Baptist Church Lounge, 301 Port Road	2.30 pm to 4 pm



NO APPOINTMENT NECESSARY

Please note: If you sell anything to us, suitable ID is required. Please also bring your bank account details for the deposit of funds for larger purchases.

ALSO BUYING IN

WAIHI	Sat 6 June	Waihi Baptist Church Hall, 3 Gilmour Street	9 am to 10.30 am
--------------	------------	--	------------------

John Bertrand The Trusted Name In Numismatics Since 1965!

John Bertrand (Collectables) Limited
T: 04 232 9832 • E: info@bertrand.co.nz
Level 1 Harcourt's Building, 215 Main Road,
Tawa, Wellington 5028
PO Box 323, Wellington 6140



JOHN BERTRAND™
COLLECTABLES LTD

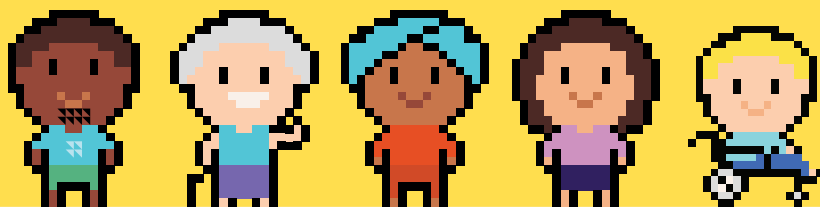
Members of the Australasian Numismatic Dealers Association and the New Zealand Numismatic Dealers Association





COMMUNITY QUEST

WAIHĪ BEACH BOWENTOWN
ATHENREE



WAIHĪ BEACH, BOWENTOWN + ATHENREE STATS

105
Online surveys

270+
Event attendees

3498
Pieces of feedback



LEVEL 2 COMPLETE



HIGH SCORE

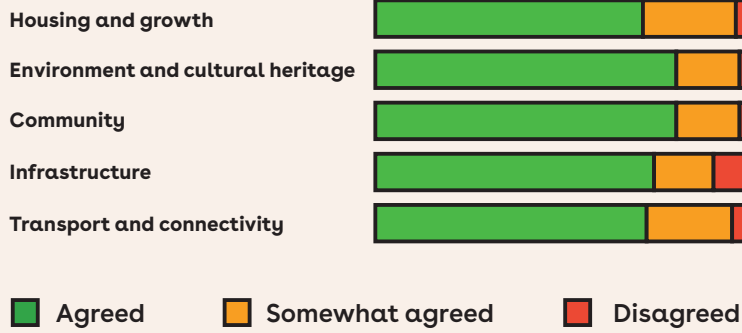


LEVEL 3 UNLOCKED



THANKS FOR YOUR FEEDBACK WAIHĪ BEACH, BOWENTOWN + ATHENREE

LEVEL OF AGREEMENT WITH OUR KEY TOPIC SUMMARIES

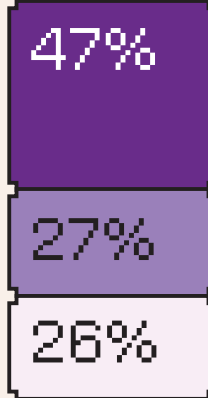


INFRASTRUCTURE

47%

Think we should invest in future infrastructure as needed to maintain current levels of service.

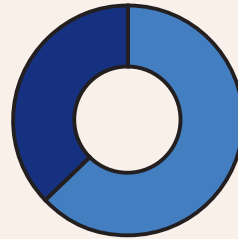
Compared with 'spending more to increase what we deliver because more people need it' (27%) or 'keeping costs low and get the most out of existing assets' (26%).



DEDICATED DOG AREA

63%

Think we should we create a dedicated fenced dog exercise area in Waihi Beach.



LETTING NATURE DO MORE OF THE WORK

Should we let some areas of our reserves grow more naturally, with less mowing?



SAFETY IMPROVEMENTS (BARRIERS, STREETLIGHTS)



WALKWAYS, FOOTPATHS + CYCLEWAYS

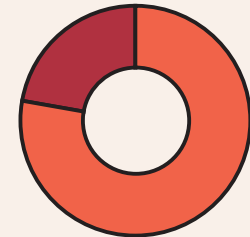


mattered to you the most when it comes to moving around (out of 8 options).

MANAGING LANDFILL

78%

Think we should collaborate with other councils or organisations to invest in a future landfill or transfer station closer to home.

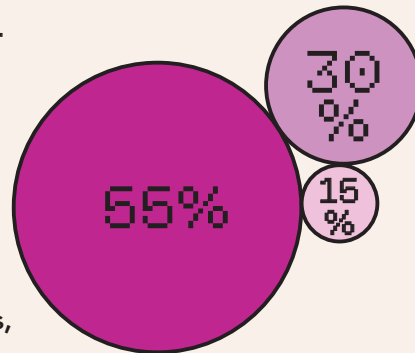


TOWN CENTRES + STREETSAPES

55%

Think easy movement and access for bikes, cars, and people should be the focus.

Compared with 'keeping streets simple and functional to keep costs down' (30%) and 'creating attractive streets with trees and planting, even if it costs more' (15%).



FIND OUT MORE

Percentages have been rounded to the nearest whole number.

To see the full feedback results, scan the QR code or visit the link:

yourplace.westernbay.govt.nz/spatial-plan-waihi-beach-bowentown-athenree



YOURPLACE.WESTERNBAY.GOV.T.NZ

Junior girls up-skilling

Our Junior Girls Module, held on Mondays, is the first girls-only rugby competition of its kind for this age group in the Thames Valley region, catering for Year 3-8 players. The girls are split into three age groups: Year 3-4, Year 5-6, and Year 7-8.

With the growth of women's and girls' rugby both locally and internationally, we identified a need within the Valley to create a safe, supportive, and enjoyable environment for girls entering the game.

We initially sought expressions of interest from across the community and received registrations from 60 girls. Unfortunately, there was not enough interest to make a Tairua-based programme viable this season, so sessions are being held in Paeroa and Waihi on alternating weeks.

Each Monday over the five-week programme, the girls come together for fun, engaging, and interactive sessions where they learn rugby skills and participate in games.

The remaining sessions are as follows:

- **June 8:** Paeroa Centennial Park Group warm-up followed by team games
- **June 15:** Waihi Athletic Rugby Club Group warm-up followed by team games
- **June 22:** Paeroa Centennial Park Group warm-up followed by team games

The first two sessions focused on tackle technique, carrying the ball into contact, and ruck rules and skills. The final three sessions are



centred around game play, giving the girls the opportunity to put their skills into practice and simply enjoy playing rugby.

The programme will conclude with a Girls-Only Festival Day on 28 June at Paeroa Centennial Park, ahead of a Women's Premier match. This will give the girls an opportunity to stay and watch, helping them see the pathway and progression into women's rugby in the future.

We have been incredibly pleased with the response from the community and the positive feedback received throughout the programme. As a result, we are excited to continue offering this initiative in the future. It has been



fantastic to see the girls building new friendships, developing confidence, learning new rugby skills, and most importantly, enjoying the game we all love.

Girls are still very welcome to join

and come along for some fun.

For any further information, please contact: Steph Te Ohaere-Fox
steph.teohaerefox@tvrfu.co.nz

Photos by Mark James



Waihi NEWS

Waihi Police inform retailers about current concerns

The Go Waihi Business Association held a special meeting on May 19th to address those retailers and staff who could be feeling uncomfortable in their businesses with recent events, in particular our main Seddon street. A big turn out to discuss their rights and perhaps solutions by coming together with mutual support.

Waihi Police Sergeant Nigel Sanderson gave a presentation to the crowd with most helpful advice, he told us " back in 2013, Waikato Police did their rural review on how policing was managed in the Waikato district, since then districts were combined with Waihi and Waihi Beach together with Paeroa, although Waihi not necessarily 24 hour calls, Paeroa most certainly is".

Disorderly behaviour, drug use - or selling there of, threat and assault are all offences and now in force Stalking laws will be enforced. Sgt Sanderson told us he had the Intel Officer recently look into call to service to Seddon Street in the last 12 months, 127 calls, 25 calls to Kenny Street this month, numbers wise not huge, but approx 20 of those were during business hours with offending customers.

He wanted to impress on us that



calling 111 is for something that is happening in front of you, that is worrying regarding immediate harm or damage. Calling 105 is for when, say, you come into your shop in the morning and a brick has been thrown through your window overnight UNLESS you think

someone is still in your premises.

Our Police here in Waihi are on a progressive roster system, it may start say 7am to 2am, Waikato Eastern Staff like Paeroa/Thames are always on back up.

Many of us did not know that there

is an online reporting process too.

Just a note to advise that Waihi Ward councillors are investigating what can be done regarding upgrading the existing main street security cameras, as we go to print.

Also Austin Rattray has a recommendation regarding in-store security cameras:

Look for stand-alone WiFi CCTV cameras that just need power (no other wiring) + a MicroSD card for storage.

They connect to their WiFi and playback of footage/alerts all via your phone or tablet. There are plenty of other brands, but EZVIZ are well priced and reliable. They're available from pbtech.co.nz.

If people want support with setting these up, Aaron of WaihiTech is able to assist:

Contact Aaron 022 083 3326 or email aaron@waihitech.nz

There are also local security firms, who are very reasonable in cost I believe, about \$40 per month.

Thank you to those who attended the Retailers meeting. We trust the information from Police Sergeant Nigel Sanderson was helpful.

- Jennie Black, Editor



WAIHI LIFECARE VILLAGE

EST. 1902

COTTAGE 17 REFURBISHED & AVAILABLE NOW

Located close to the township of Waihi, Waihi Lifecare Village is one of the region's most idyllic yet affordable lifecare villages.

Our cottages are set in a peaceful, rural setting with extensive lawn and garden areas which celebrate the heritage of the site.

The village offers a range of one and two bedroom cottages as well as a 65 bed care facility providing resthome and hospital level care for continuity of care.

Cottage 17 has been refurbished and is available now so please contact us for more information or to book a viewing.

We look forward to hearing from you.



Caring for the community since 1902

Waihi NEWS

Dog walk proves popular



On Saturday, 23 May, the inaugural dog walk around the Rim was held in less than ideal conditions, but with a great turnout and a multitude of mutts all having a go.

Photos by Mark James



Owens Flooring

We Have All Your Flooring Needs Covered
Flooring Sales & Installation • Domestic & Commercial

Carpets • Vinyls • Laminate & Timber Planking




Showroom: 5/57 Wilson Road at Waihi Beach
07 863 5723 / 027 233 7277
sales@owensflooring.co.nz • www.owensflooring.co.nz



TYRE HQ

WAIHI

FIELDAYS TYRE SALE ON NOW!

SUV & CAR TYRE SPECIALS

ALL-TERRAIN • RUGGED TERRAIN • ROAD TERRAIN

MAXXIS RAZOR
ALL-TERRAIN



FALKEN WILDPEAK AT3
ALL-TERRAIN



KUMHO TA21
HIGHWAY ALL-SEASON



GET READY FOR WINTER DRIVING CONDITIONS

BATTERIES IN STOCK!

- ✓ Automotive Batteries
- ✓ Marine Batteries
- ✓ Ride on Batteries
- ✓ Motorbike Batteries



TPMS SENSOR REPLACEMENT

- ✓ Supply, fitment & programming available



PRECISION WHEEL ALIGNMENT

Latest John Bean technology

V2380




GOODRIDE
Performance Tyres

KUMHO TYRES

afterpay

07 863 9211 | WWW.TYREHQ.CO.NZ

* T&C's apply. Must be the same tyre, size, load/speed rating and service.



PAY RATES EASY

USING PAYBLE


PAY YOUR RATES YOUR WAY

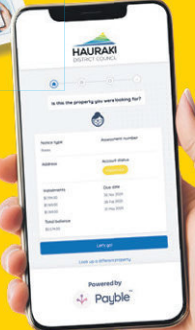
Payble makes it simple.

- View your property and water rates bills
- Choose a payment option that suits you best
- Manage payments easily in one place

Stay up to date

Scan the QR code to find out more about Payble
www.hauraki-dc.govt.nz/payble





SIGN UP TODAY!

1. Visit <https://pay.hauraki-dc.govt.nz/>
2. Enter your Assessment Number
3. Enter your Sign-up code*

*Get your sign-up code by calling 07 862 8609, visiting one of our offices or dropping into an Information and support session.

Find out more

Come along to our information and support sessions at the Waihi Library and Service Centre, Paeroa Library and Ngātea Service Centre and Library between 10am-12pm on:

Tuesday, 2 June	Friday, 12 June
Thursday, 4 June	Tuesday, 16 June
Monday, 8 June	Tuesday, 23 June
Wednesday, 10 June	Tuesday, 30 June

Waihi NEWS

Waihi College events – incredible talent coming up!

Thursday, 11 June, 6pm

Waihi College is thrilled to host UNHEMMED, our inaugural Wearable Art Show!

This event brings together the creative talents of students from Waihi College, Hauraki Plains College, and Katikati College for a spectacular showcase of innovation and design. Featuring stunning wearable art entries, live entertainment and prizes awarded by local judges. Come along and support our local rangatahi as they push the boundaries of art and fashion.

24 to 26 June, Waihi College Hall, 7pm

Step into a world where myth, mischief, and mayhem collide in *Revenge of the Amazons* – Waihi College's bold and brilliantly imaginative stage production for 2026.

Inspired by the spirit of Shakespearean comedy but with

a wildly modern twist, this play takes you on a fast-paced journey through enchanted realms, powerful warriors, and delightfully unexpected encounters. Think classic theatre meets 80s feminists, with a splash of psychedelic fluoro fairies on rollerblades – it's as fun and unpredictable as it sounds!

Our talented cast and crew bring together a fantastic mix of senior and junior students, all working together to create a vibrant, high-energy performance full of humour, creativity, and heart. From clever dialogue to colourful costumes and dynamic staging, there's something for everyone to enjoy.

Don't miss your chance to support our amazing young performers and experience a night of laughter and entertainment. Get your tickets now – it's going to be an unforgettable evening!

Yummy food for sale at our food stall too, so come along and make a night of it.

UNHEMMED
WEARABLE ART SHOW

THURSDAY 11TH JUNE
WAIHI COLLEGE - 6PM

BUY TICKETS HERE:

The World's No.1 Smart Home Appliances Brand now at

FREE delivery
on selected Midea Whiteware*

*within 50km of a Home store. (Offer available in-store only).

100% HOME WAIHI **3 year warranty on Midea Whiteware**

24 ROSEMONT RD, WAIHI • PHONE 07 863 8207 • email waihi100@xtra.co.nz • www.100percent.co.nz

See instore for terms and conditions.

OceanaGold Update

5th June 2026



Opening of the Waihi North Portal

The Waihi North Project tunnelling works are now underway.



Scan this QR code to watch a video marking this milestone.

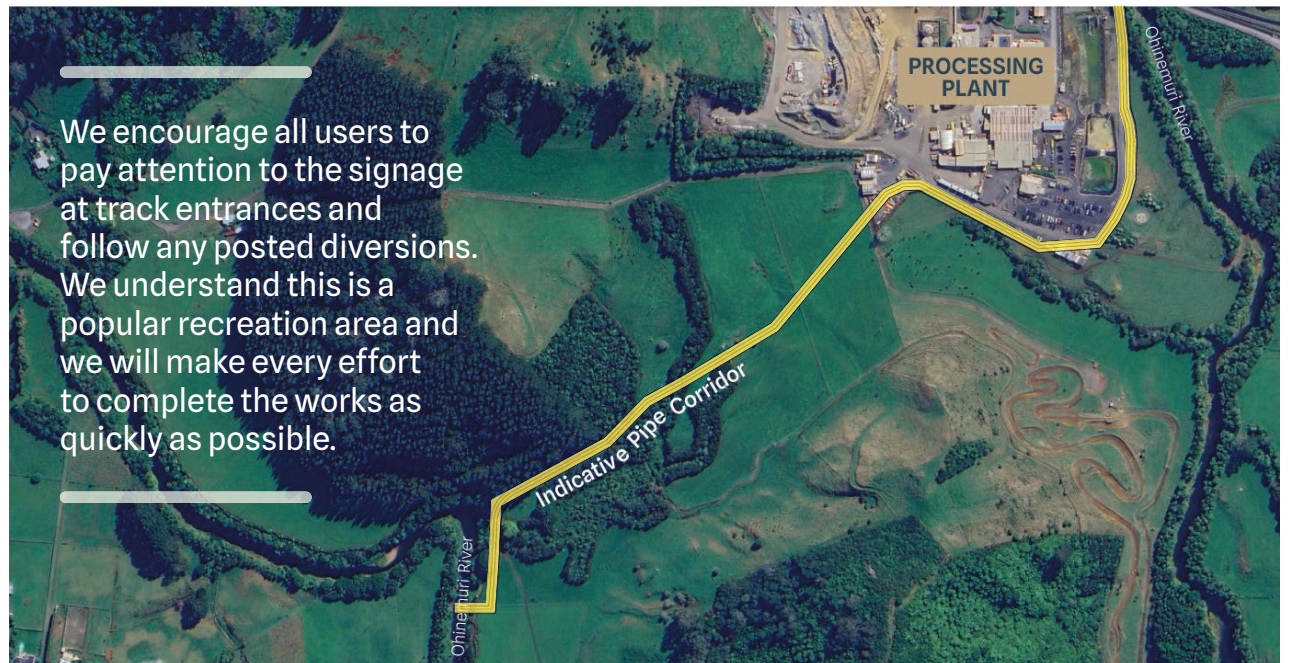


Upgrade works continue near Gladstone Hill tracks

A reminder that the upgrade works near the Gladstone Hill tracks are continuing, with trench works and pipe installations beginning shortly.

Due to the proximity of these activities to public tracks across OceanaGold land, we may need to temporarily manage access to the area to ensure public safety. Signs will advise of any diversions or short-term closures.

All tracks affected by the works will be reinstated once construction is complete, and there will be no ongoing access restrictions.



We encourage all users to pay attention to the signage at track entrances and follow any posted diversions. We understand this is a popular recreation area and we will make every effort to complete the works as quickly as possible.

Power cable installation from Waikino

Commencing in mid-2026, PowerCo is installing an underground power cable to increase electricity supply capacity to the OceanaGold Waihi mine site.

Our Waihi operations are currently subject to power restrictions during peak-demand periods to help manage local electricity use. At times, particularly during busy holiday periods, this requires our processing plant to shut down temporarily. Installing this cable will address that constraint.

The cable will be installed within the Hauraki District Council (HDC) road reserve and will not extend over private land. It will start at Transpower's Waikino Substation and finish at OceanaGold's Baxter Road site. While PowerCo is installing the cable and will own it, OceanaGold

is financing the installation. No power outages are planned as part of this work. PowerCo will provide further information about the works closer to the starting date, including letter drops to adjoining landowners.

Investing in our host community

Sponsorships and donations approved in April

Hauraki Waka Ama Firewood	Purchase of life jackets, navigation lights, and steerers' blades	\$1,730
	For residents in need (in-kind)	\$9,720
TOTAL		\$11,450



Sponsorship application form
www.waihigold.co.nz/sponsorship-donations



If you have any questions or concerns, please contact us

Community Engagement Line: 0800 924 444 | Project Information Office: 86 Seddon St., Waihi
Email us via our website: www.waihigold.co.nz

Please note: We are not currently blasting in the Martha Open Pit. Any changes to this will be notified.



OceanaGold Update

5th June 2026

Sky Tower Challenge 2026

A huge congratulations to everyone in the OceanaGold Waihi Mines Rescue and OceanaGold Macraes Operation Emergency Response Teams for their efforts at the Sky Tower Challenge in late May.

More than 1,100 firefighters and emergency responders from across New Zealand took on the Firefighter Sky Tower Challenge in Auckland; climbing 1,103 steps while wearing 25kg of gear to raise vital funds for Blood Cancer NZ.

With 1,150 participants climbing for a cause, the 2026 challenge raised an incredible \$2.5 million for Blood Cancer NZ; supporting Kiwis and whānau impacted by blood cancer.

Also a big shout out to staff who competed for or assisted the local Waihi Volunteer Fire Brigade and Mayor View Volunteer Fire Brigade teams.

This result reflects the dedication of our teams on the tower and the incredible support from our communities, families, and colleagues who got behind the fundraising efforts. We're incredibly proud of you all! Your commitment to community, teamwork, and care continues to make a real difference.



Waihi Mines Rescue Team
3rd fastest team in the country.



Waihi team – 2nd overall for team fundraising.



Macraes team – 3rd overall for team fundraising.



Shay Perkinson (Waihi)
3rd highest individual fundraiser in New Zealand.



Shay Perkinson

The 2026 Sky Tower Challenge raised an incredible \$2.5 million for Blood Cancer New Zealand

Bob & Val, a magnificent milestone – 70 years married

Married 9 June, at Presbyterian Church in Otahuhu, 70 years ago, Bob Sangster, 94 years, and Val 92 years, will be celebrating this week with more than 44 family members coming to Whangamatā for the grand milestone.

They have two daughters and three sons, 11 grandchildren and 18 great grandchildren – with another on the way.

The secret to their early start to a long and wonderful marriage, Bob said "I was in the steel game, a fabricator and worked all over the country, Invercargill, Tiwai Point, Gisborne, while Val, a stay at home Mum, worked hard with the five children, as all wives did in the day.

They fondly recall and tell me how they met walking on the road in Weymouth, Manurewa. Bob 18 years and Val 16 years, they passed each other, then Bob turned around and then Val turned around and looked too. Bob said to his mate "I like this one! I had a motorbike, sometimes I would pick her up and we would go into town", then Bob, now 18, was drafted into the Navy for training. So Val would come down to see him every weekend, ride her bike from Weymouth to Manurewa, to catch the train to Auckland, then take a

boat to Motuihe Island to spend just one hour with him. One time she missed the boat and had to hitchhike a ride with someone else!

They didn't marry until they bought a house, a section and built. Bob said "it was the worst house in the street!" By now you can see, the pair have a shared wicked sense of humour. They had been coming to Whangamatā for many school breaks since 1970. With a caravan at the Motor Camp, and holidayed there for 20 years. Always enjoying a good long spell with children in Summer holidays for 6 weeks.

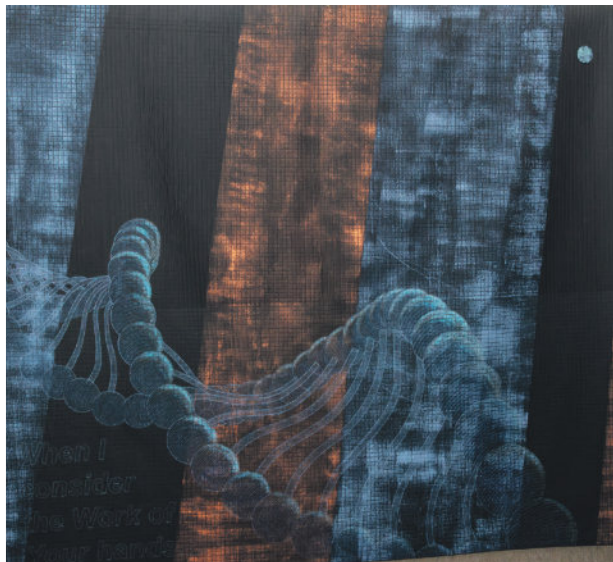
When asking Val what she thought a long marriage entailed, she said "I really don't know. There were times when I could have throttled him, a few tea towels were thrown, but really it's about give and take, no one is perfect, but basically we get on very well!"

Honorary members at Whangamata Bowling Club, they still like to go down for a drink and a raffle in the late afternoon, catching up with friends. It was an absolute joy meeting Bob and Val Sangster, a wicked twinkle and an everlasting humour.

– Jennie Black, photo by Mark James



Quilters exhibition stunning



Last weekend at the Memorial Hall we saw a feast of colour and talent with over 150 quilts on display, 80 of them from the Whangamata Quilt and Patch Club.

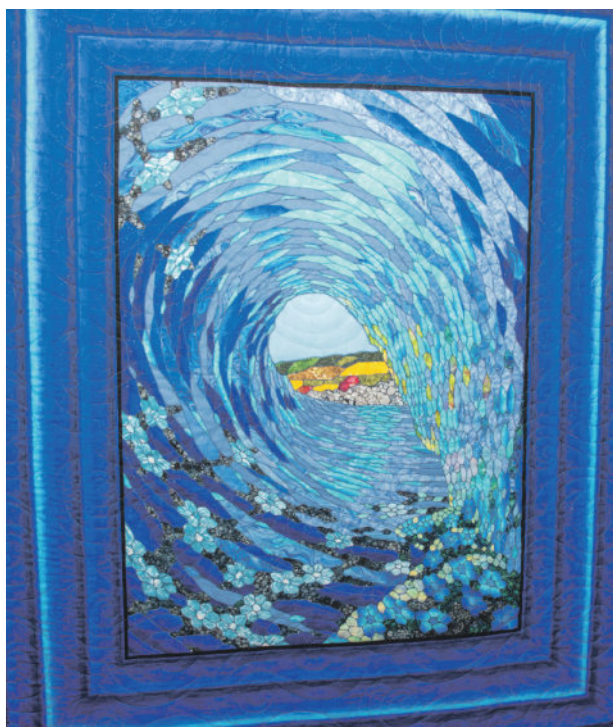
The Guest Exhibitor was visiting Christchurch-based textile artist, Cherie Gurney. Her absolutely exquisite work uses original designs with fabric, thread, dye and paint – every piece told its own story. Some were even 3D in appearance.

Debbie Adding told us "exhibitors come from all over, Tauranga, Hamilton, Auckland, Rotorua, it just keeps growing every year."

The 'region' entries were incredible, telling their own stories and keeping the movement joining together, of their own stories.

Hope you got to see it, the works from our locals too, who spend endless hours, home based with creations of wonder.

– Jennie Black, photos by Mark James



Dynamites win a Cracker

The Red n Whites hosted The Bay on Saturday in the rematch of the season so far in my opinion, the home team winning by 24-21.

"It was a hell of a game" according to Coach Basil Mellars who was surprised at how his team got away in the first 30 to lead by 21-0. "We had to defend across the park and we did, I thought our defence was outstanding." With Bay mounting a second half comeback there were some tense moments right up till the final whistle.

When I asked him about player of the day, Basil started to list just about the whole team, it was such a hard call. Half back Carter Miller had an impressive game, the 17yr old handling the pressure well and Campbell Puaha got the nod for POD at fullback who played incredibly well

and whose goal-kicking was very good.

Thames is next up at Thames, which is a big ask so get along there if you can to support your team. After beating the Cobras their tails will be in the air, but Coach Basil is confident that Whanga has the team to compete well.

The Irish are in town again and are playing so check out their photo and say giddyay if you see them in town, I'm sure they will be a great asset. *Whangamatā & Waihi News* will have a chat with them before the next edition so we can all check out where they are from and some personal info.

Go the Red n Whites!

- Story & photos by Mark James
...more photos on Facebook



PAUANUI

Pink Ribbon weekend passes fundraising milestone

Milestones were celebrated in Pauanui last weekend as the community once again rallied behind Breast Cancer Foundation NZ during the annual Pink Ribbon events.

This year's event marked a major achievement, with fundraising over the past six years now exceeding \$100,000 for the foundation — an extraordinary contribution from such a small community. Over the years, the Pauanui event has consistently ranked highly on the national fundraising leaderboard and, in recognition of this success, organisers were recently invited to Parliament for a special breakfast celebration.

The town turned out in force, embracing the pink theme and supporting a full programme of events including breakfast, high tea and dinner functions on Saturday.

The day began with the popular Breakfast and

Bubbles event at Grand Mercure Puka Park Resort. Guests enjoyed a delicious breakfast featuring fruit platters and a cooked breakfast with pink hollandaise sauce adding a playful nod to the occasion. The venue was beautifully decorated with a pink butterfly theme, creating a warm and festive atmosphere.

The event was expertly MC'd by Warren Male, while special guest speaker Rob Nichol — a Pauanui holidaymaker and one of New Zealand's most influential and respected sports administrators — shared insights from his extensive experience advocating for athletes across many sporting codes in New Zealand. Internationally, he was a founding Executive Director of the International Rugby Players' Association and has served on global athlete advocacy bodies, including the World Players' Association.

The Pauanui Club later hosted an elegant High Tea, where treasured bone china, polished silverware and tiered cake stands filled with sweet treats created a memorable afternoon. Guests were entertained by acclaimed singer Tina Cross, who performed four of her favourite songs while sharing personal stories from her life and career. Resident police officer Tim Florence also spoke candidly about his role in the community.

Cabana Kitchen & Bar rounded out Saturday with two sold-out sittings for a themed Japanese evening. Guests enjoyed outstanding food and a lively atmosphere, continuing the weekend's strong community spirit.

Festivities continued on Sunday with live music at Cabana, sponsored by Harcourts Pauanui, along with the draw of more than 100 raffle prizes generously donated by local and national sponsors.

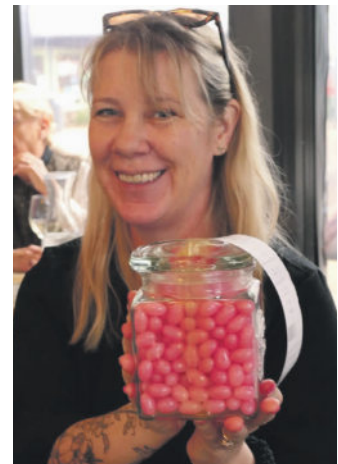
Adding to the fundraising efforts, the Hello Friday online auction closed on Sunday evening after attracting strong support sponsored items, including firewood, accommodation packages, flights and fishing charters.

- Photos & event theme by Pat Courtney

Breakfast



Organisers are now finalising this year's total donation to Breast Cancer Foundation NZ, with early indications suggesting the figure will exceed \$15,000.



Cabana Dinner



High Tea



Huge knitting project



What began as a simple conversation in a retirement village craft group has grown into a heartfelt international project connecting local residents with rescued elderly elephants in Thailand.

After volunteering last year at Elephant Nature Park with Whangamatā yoga teacher Emma Scott, whose ongoing connection with the sanctuary has helped inspire local involvement in the project." Longridge Country Estate staff member Sue Amos returned home inspired by the sanctuary's work caring for rescued elephants. When she mentioned that the sanctuary welcomed handmade blankets for its elderly elephants, the village knitting group immediately embraced the idea.

Residents at Longridge Country Estate in Paeroa have since been busily knitting colourful squares which are being carefully joined together to create a giant blanket measuring approximately three metres by two and a half metres.

Now the project has also spread to Whangamatā, with residents at Moana House joining the effort and creating their own blanket to travel to Thailand in July, when Emma returns.

The project recently received a touching response from the Save Elephant Foundation, the organisation behind Elephant Nature Park. In a personal email, the foundation introduced the Longridge knitters to one of the sanctuary's beloved "grandma

elephants," Sri Nuan, describing her as "gentle, resilient, and a symbol of wisdom and quiet strength."

For many involved, the connection feels deeply meaningful. Residents are not simply knitting blankets, but contributing comfort and care to another aging community on the other side of the world.

Enthusiasm has spread quickly through the village and beyond, with presentations already shared with community groups including Rotary, Lions clubs, Grey Power and women's groups. Photos and progress updates are also being shared with the sanctuary team in Thailand.

Emma Scott, who has taken groups to volunteer at the sanctuary, says the response has been deeply

moving.

"There's something incredibly beautiful about elderly hands knitting for elderly elephants," she says. "It's compassion, connection and community all woven together."

The project continues to grow, with more community members becoming involved each week. Residents look forward to seeing their handmade blankets wrapped around the gentle giants they have come to know and love from afar.

With the project continuing to grow, residents at Moana House would also gratefully welcome donations of acrylic yarn. Anyone with spare yarn they would like to contribute can contact Moana House or Emma Scott balance. emmas@gmail.com.

We provide a wide range of services for your Farm Animals:

- Animal Health Plans
- Springtime Emergency Services
- Ultrasound Pregnancy Testing
- Mastitis Management & Prevention
- Lameness Management & Prevention
- Trace Element testing
- Body Condition Scoring
- Reproduction Programmes
- Debudding & Dehorning
- Vaccinations
- Geldings



0800 267 683

farm@corovets.co.nz
www.corovets.co.nz

Waihi Clinic:
10 Mueller St, Waihi

Whangamata Clinic:
215 Aickin Road, Whangamata

Tairua Clinic:
1 Wharf Road, Tairua

OWL group proves popular

Two sold-out screenings of *Song Sung Blue!* What a start, and thank you for being part of it. You helped prove that there's a real appetite in Whangamatā for great films shown in great company, and we couldn't be more thrilled.

Now we're getting ready for our next screening, and we think you're going to love it.

For our next film on Wednesday 10 June, we're showing *Thelma* - and yes, it is completely different to

Song Sung Blue. But here's why we think you'll find it every bit as uplifting.

Thelma is 93 years old. She's just been scammed out of \$10,000 by someone pretending to be her grandson on the phone. Most people her age would be devastated and do nothing.

But not our Thelma. She gets mad, and she gets even.

Armed with her mobility scooter and an unshakeable sense of justice,

she sets off on the adventure of her life to get her money back.

It's funny, it's exciting, and it's genuinely life-affirming. The lead actress June Squibb was 94 years old when she made it and she is absolutely magnificent.

If *Song Sung Blue* was about following your dreams, *Thelma* is about refusing to be a victim - at any age. Both films share one thing: older people refusing to let age define them. *Thelma* just does it at

93, on a mobility scooter, and with absolutely no intention of being told she can't.

As you had been to see *Song Sung Blue*, we wanted to make sure you heard about the next film first. We do hope to see you there.

***Thelma* is showing on Wednesday, 10 June. Tickets are \$10 each as before, and available from the bar at the Whangamatā Club on Friday.**

- Ross Stewart, OWL film group

Stars that keep shining

Volunteers play a very important role in our community, they are the oil that keeps the big cogs turning and help make our town a better place to live. They are caring, kind and capable.

In each edition we will catch up with a volunteer and ask them a few questions.

This edition we welcome Daniel Lewis from the Whangamatā Surf Life Saving Club.

Q: What role do you play in the Whangamatā Surf Life Saving Club Daniel?

A: I'm a Lifeguard and a member of the Lifeguard Committee. I'm also part of the Search and Rescue Squad (SAR). We can be called out at any time for beach related emergencies. I've been involved in several rescues and searches in this role. I'm also part of the club's new inflatable rescue boat (IRB) racing team. This is an exciting addition for our lifeguards and I'm fortunate to be the driver for the team.

Q: When did you first volunteer for the club?

A: I've been volunteering for 3 years, and have been involved in the club since I was 6. I started as a nipper, then became a rookie, then a surf sport competitor before earning my lifeguard award.

Q: What has been a specific occasion that stands out for you?

A: A kayaker stuck in Doughnut

Island was my first rescue and that ignited my passion for surf lifesaving. Since then I've completed 30 plus rescues.

Q: How does the Whangamatā Surf Club benefit our town for locals and visitors?

A: Whangamatā is known as a safe swimming beach and we help keep it safe with regular patrols. This helps attract more visitors to our town. We offer learning opportunities through Surf Lifesaving NZ and we have a friendly supportive atmosphere for young people. The more experienced lifeguards are role models for the younger ones coming through.

Q: What have been some of the challenges for the club over the last couple of years?

A: The rebuild was a massive challenge. From the start to finish there were unknown obstacles that required additional funding. A huge thanks to those who contributed financially and the volunteer base that assisted willingly to complete the project. We are super proud of our facility.

Q: Are there different volunteers who have specific tasks?

A: Yes, we have lifeguards, committee members, board members, parents organising junior surf and surf sport. We also have volunteer coaches who help deliver all the different programmes and disciplines for surf life saving.



Q: What would you say to encourage young people to donate some of their time?

A: You can devote as much or as little time as you like. Any time is appreciated. Helping at the Surf Club is exciting. It makes a real

difference in our community and gives a chance to be a positive role model while learning skills for the future. I've made some really good friends throughout New Zealand by being part of this team.

Thanks Daniel, you are a star.



Red n White junior rugby fierce

Amazing game in Tairua for our Year 8s with a win against an awesome Hauraki team last week.

Freezing cold conditions but every one of the kids played so well and gave it everything out on the field. So proud of the teamwork, effort and sportsmanship shown tonight.

Huge thanks to all of our whānau supporters standing out in the cold with us cheering the kids on

Where Astute Investment Meets Coastal Growth



427 Port Road, Whangamatā, Thames-Coromandel, Waikato
Investment | Size: 1,513 m² (approx.)



Boundary lines are indicative only

**For Sale by Deadline Private Treaty
Closing Friday 12th June 2026 3:00pm (Unless sold prior)**

Secure Cash Flow Backed by Scale, Location, and Long-Term Demand in World Class Whangamatā

An exceptional opportunity to acquire a substantial freehold landholding with multiple income streams in the highly sought-after coastal township of Whangamatā.

Occupying a prime gateway position at the entrance to the town's business district, this well-established commercial property is home to six tenants, collectively generating an annual rental income of \$276,586 + GST.

The property has been tightly held by the current owners for many years and benefits from an outstanding tenancy history, with virtually no vacancy recorded over the past decade - underscoring its location, functionality and ongoing tenant demand.

This is a rare and compelling opportunity for investors or developers seeking secure cash flow, proven tenant demand, strong underlying land value, and strategic positioning in one of New Zealand's most popular coastal destinations.

Features

- Premium income producing investment
- Annual rental \$276,586 + gst
- Substantial landholding of 3,023 sqm (more or less)
- Ample onsite car parking for tenants and customers
- Multi tenanted property providing split risk income profile
- Current lease structures allow for accessible future development upside
- Approximate 84-metre road frontage, offering strong exposure and accessibility

Annual rental
\$276,586 + gst

Ample onsite car parking for
tenants and customers

Approximate 84-metre road
frontage

Substantial landholding of
3,023 sqm (more or less)

Multi tenanted property
providing split risk income profile



Alan Pracy

Director
Hamilton (Agency & Property Management)
Licensed under the REAA 2008
Call 021 623 089



Justin Oliver

Associate Director
Hamilton (Agency & Property Management)
Licensed under the REAA 2008
Call 0275 654 837

NCEA students' art and photo competition

King's Birthday weekend brought an opportunity for Whangamatā Area School art and photography NCEA year 11-13 students to showcase their work at Edisons.

The opening night was Friday the 29th of May. The Whangamatā Area School Kapa Haka group shared a passionate performance lead by Moana and Jana. This was followed by music students put together by music teacher Adrian Botting, who shared a few songs from their set list. These two groups will be heading to Rarotonga later this month on a cultural tour.

As a student that had the opportunity to have my own artwork showcased along with many other talented artists, I can truly say it was an incredibly rewarding and amazing experience to be a part of. It was great to see different styles of art and photography on display and the time and effort that was put into this event.

A huge thank you to art and photography teachers Lena McKillop and Rose Mahon for making this possible for students and giving us the opportunity to show people in the community what we are capable of. A big thanks also to The Little Gallery



Opening night (above) and Shy Dagger.

who sponsored the event and everyone who came along to support us.

- Shy Dagger, year 12 student



Hardy solstice swimmers

**SAVE THE DATE
Winter Solstice Dip on 21 June**

It's nearly that time of year again for the Winter Solstice Dip. The date is 21 June and this year the Whanga Dippers are lucky to have the Whangamata Surf Lifesaving Club in attendance.

The Whanga Dippers have been in existence since 21 June, 2023, and have a dip in our beautiful ocean every Wednesday at 7.30am.

The Surf Lifesaving Club are using the weekend as an off-season catch up with the bar open on Saturday night. Let's help shape the club's future by supporting them on this weekend.

We are going to have buckets at the Winter Solstice Dip on Sunday, 21 June, at 11.30am for gold coin donations to the Surf Club. There



are still projects that need to be completed at our Club and this will help towards those. We are also

very grateful to Steve and Janene Hall from Meat at the Beach for their donation of sausages for the

sausage sizzle.

Cold water dipping is beneficial in many ways. It can assist with physical recovery by reducing muscle soreness and inflammation. Many people feel more awake, focused and energised afterward. Some research suggests cold exposure may improve moods and as an alertness boost. Many people report better stress management along with an increased sense of accomplishment.

Just give it a go and let's get out there to support our wonderful Whangamata Surf Lifesaving Club and acknowledge all the great work they do for our Community.

See you on 21 June at the Surf Club at 11.30am!

- Therese Dixon, Whanga Dippers

Sunday Markets – community legends

Whangamata Sunday Market recently donated \$1000 to Land Search and Rescue - a group made up of dedicated folk from Tairua, Pauanui and Whangamatā, set up almost 25 years ago following a search in Whangamatā. They provide search and rescue support for the lost, missing and injured, assisting Police with Search & Rescue (SAR) operations in suburban, urban, wilderness and rural areas including forest parks, shorelines and caves. Training programmes include first aid, safety

around helicopters, communications and bush navigation – all in preparation for your moment of crisis! We are lucky to have them and encourage anyone who would like to join to check out their facebook page: Tairua-Pauanui and Whangamatā Land Search and Rescue.

Meanwhile, come and have a stall at the Sunday Market – all our stall holder fees are donated to community groups, so the more stalls, the more we can donate!



Rescue team well placed in Sky Tower challenge



The Mines Rescue Team from OceanaGold's Waihi Operation added to their impressive record at the Sky Tower Stair Challenge on Saturday, 23 May.

Each year, members of the Mines Rescue Team join rescue personnel and firefighters from around the country to climb the Sky Tower and raise funds for Blood Cancer New Zealand. The 2026 event raised \$2,476,727.22 with 1150 people from 250 brigades climbing the tower.

The event started in 2005 and has been raising funds for Blood Cancer New Zealand for 21 years, growing from \$17,500 in its first year to well over \$1 million annually. After coming just a few thousand dollars short in 2025, this is the first year the Challenge has raised over \$2 million. This year the Waihi team was placed second overall for fundraising having raised \$57,777. Their colleagues at the Company's Macraes mine in Otago were placed fourth overall in the teams section and third in their category with \$47,472 after gaining first place last year. Together, the two OceanaGold volunteer mines rescue teams from Macraes and Waihi raised over

\$104,000. For the second year in a row, Waihi team member Shay Perkinson was placed third for individual fundraising, this year raising \$18,348. Waihi was also the third fastest team on the day.

The Sky Tower climb is certainly a challenge: 1103 steps over 51 flights of stairs climbing 328 metres while carrying 25 kilogrammes of equipment. Waihi Mines Rescue Team captain Jed Moriarty said that the Waihi and Macraes teams compete in the "donned and started" category. This means that the participants are carrying the oxygen they breathe during the climb. "Not only do we have to carry the oxygen we need to breathe, we

also have to manage the speed we climb, and the exertion required so that we quite literally don't not run out of air on the way up".

Jed praised the team for their commitment and dedication, as well as making special mention of their sponsors.

"We train and maintain both our fitness and capability to be part of the Mines Rescue Team and the Sky Tower event is part of that. But we could not raise the funds we do without the generous support of the many businesses and individuals who contribute to this cause. Together, I really do believe we are helping to make a difference."

Track removals proposed as Cathedral Cove prioritised

DOC will prioritise investment in Coromandel's iconic Mautohe Cathedral Cove as part of a proposal to remove two weather-damaged adjacent tracks.

Globally renowned for its picturesque rock arch, Mautohe Cathedral Cove is the main attraction for many visitors heading to the wider DOC-managed coastal reserve between Whitianga and Hahei for naturing.

However, the area is prone to landslides and is vulnerable to weather damage, as seen following Cyclone Gabrielle in 2023 and Cyclone Vaianu this year.

Recent efforts to reinstate the Waimata-Gemstone Bay Track and Hahei Beach Short Walk were undone by the January 2026 storm. Although DOC contractors were able to clear a large volume of debris from the main slip to reopen the track to Mautohe Cathedral Cove, responding to storm damage across the wider reserve in this way is not considered sustainable.

Tania Short, DOC Principal Advisor for Strategic Projects, says the situation has reached a tipping point and continued investment in the Waimata Gemstone Track and the Hahei Short Walk is not considered sensible or sustainable.

"When we committed to rebuilding



Photo by Andre on Unsplash

these tracks, we cautioned it came with the risk of further storm and landslide damage - unfortunately, that's exactly what has happened," Tania says.

"We had started a repair project at Waimata Gemstone Bay which, ultimately, was thwarted by another extreme weather event impacting Coromandel. The geological instability means we will continue to deal with storm damage at this site."

Tania says DOC staff are aware some people in the community will be disappointed by the proposal.

"DOC has limited resource and must prioritise its spending - hence the proposal to focus on Mautohe Cathedral Cove and remove the Waimata-Gemstone Bay Track and Hahei Short Walk.

"Over the last few years, the local community has made it clear Mautohe Cathedral Cove is the priority - and our proposal to remove these two nearby tracks responds to that.

"Continuing to rebuild infrastructure in less popular, highly vulnerable locations, where we know damage

will reoccur, is not sustainable."

DOC staff have opened discussions with stakeholder groups and are now seeking public feedback on the proposal.

"We've added two option papers to our website. They describe the rationale for the proposed removal of these tracks and outline the significant challenges we would face if we continued repairing them."

People can provide feedback on the proposal by emailing cathedralcove@doc.govt.nz, up until 19 June.

CLASSIFIEDS

PUBLIC NOTICES

Earthwatch Whangamata A.G.M.
 Thursday 11th June
 Upstairs in the Whangamata Club
 5.30pm
 All welcome

SITUATIONS VACANT

USSHER LAWYERS

- SINCE 2007 -

Part-Time Office Administrator – Parental Leave Cover

Ussher Lawyers Limited is a busy general law practice with offices in Whangamata and Whitianga.

We are seeking an experienced Office Administrator to join our team, based in our Whangamata office and providing support across both locations. Our practice is predominantly focused on residential and commercial property law, while also working in areas of personal law including wills, enduring powers of attorney, trusts, and estates.

This is a fixed-term, part-time position for 30 hours per week, working Monday to Friday, 9.00am – 3.00pm. The role is offered as parental leave cover and is expected to commence in July 2026 and continue until May 2027, however the employment may end earlier should the employee on parental leave return to work earlier than anticipated.

The successful applicant will possess the following skills and attributes:

- Proven customer service and administration experience
- Accounts payable and accounts receivable experience
- Excellent written and verbal communication skills
- Strong organisational, file management, and time management skills with exceptional attention to detail
- The ability to work independently while contributing positively as part of a team
- A proactive, energetic, and enthusiastic attitude
- An understanding of, or willingness to learn, the administration requirements of the Anti-Money Laundering and Countering Financing of Terrorism Act 2009

We are looking for someone who demonstrates high professional standards and takes pride in their work and career.

For more information, including a copy of the Position Description, please contact Natasha Ussher at natasha@ussherlawyers.co.nz.

Applications close Friday, 19 June 2026.

MISSING DOG

HAVE YOU SEEN POTATO?



- Small brown Chihuahua cross
- Female • 1.5 years old
- Very timid and loved dearly

**MISSING FROM:
WHANGAMATA**

We believe someone may have picked her up from the orchard next door.

REWARD \$5,000

For information leading to her safe return or confirmed information about what happened to her.

IF YOU HAVE SEEN HER, HEARD ANYTHING, OR KNOW ANYTHING AT ALL, PLEASE CONTACT US IMMEDIATELY. **021 0277 9748**

PLEASE SHARE AROUND: TE PUKE, KATIKATI, ORCHARDS, PACKING SHEDS AND LOCAL COMMUNITIES.

HER FAMILY MISSES HER DESPERATELY. PLEASE HELP US BRING POTATO HOME.

Club results

MAHJONG

29 May: We had 53 players at mahjong. Congratulations to the winners:
 1st – Sue Drury, 39 points.

2nd – Irene Burns, 39 points (on countback).
 3rd – Joyce Deeming, 37 points.
 The lucky number was 15 and was won by Dawn Styles.

Send your sports team or club results to whangamataneews@gmail.com

Heads up, Whangamata!

Next week, we will be closing part of Hetherington Road (between Service Lane and Port Road) to install a new manhole.

- The work will start on Monday, 8 June, and is expected to take two weeks.
- Residents will still have access but detours will be in place for all other motorists.

- Traffic travelling into town will need to take Rutherford Road and Tuck Road then back to Port Road.
- Traffic heading out of town will need to take Casement Road and Rutherford Road then back onto Hetherington Road.

Thank you for your patience!

- TCDC

Whangamatā Tides 2026

JUNE 2026										
New Moon: 15 th Full Moon: 30 th										
Date	High tide	Height (m)	High tide	Height (m)	Low tide	Height (m)	Low tide	Height (m)	Sun rise	Sun set
	AM		PM		AM		PM			
5 Fri	10:14	1.7	22:46	1.8	4:09	0.6	16:16	0.5	07:23	17:04
6 Sat	10:56	1.7	23:27	1.8	4:51	0.6	16:58	0.5	07:24	17:04
7 Sun	11:40	1.7			5:35	0.5	17:42	0.5	07:24	17:04
8 Mon	0:11	1.8	12:27	1.7	6:20	0.5	18:30	0.5	07:25	17:03
9 Tue	0:56	1.8	13:17	1.7	7:07	0.5	19:21	0.5	07:25	17:03
10 Wed	1:45	1.8	14:12	1.7	7:58	0.5	20:16	0.5	07:26	17:03
11 Thu	2:36	1.8	15:10	1.8	8:52	0.4	21:14	0.5	07:26	17:03
12 Fri	3:30	1.9	16:10	1.8	9:48	0.4	22:14	0.5	07:27	17:03
13 Sat	4:27	1.9	17:10	1.9	10:45	0.3	23:13	0.4	07:27	17:03
14 Sun	5:26	1.9	18:08	2.0	11:42	0.2		0.3	07:28	17:03
15 Mon	6:25	1.9	19:06	2.0	0:13	0.4	12:39	0.2	07:28	17:03
16 Tue	7:24	2.0	20:02	2.1	1:11	0.3	13:34	0.1	07:28	17:03
17 Wed	8:22	2.0	20:57	2.1	2:08	0.3	14:28	0.1	07:29	17:03
18 Thu	9:18	2.0	21:51	2.1	3:04	0.3	15:21	0.2	07:29	17:03
19 Fri	10:14	2.0	22:44	2.1	4:00	0.3	16:14	0.2	07:30	17:03
20 Sat	11:09	1.9	23:37	2.0	4:54	0.3	17:08	0.3	07:30	17:03
21 Sun		1.9	12:03	1.9	5:47	0.3	18:01	0.4	07:30	17:03
22 Mon	0:29	2.0	12:58	1.8	6:40	0.4	18:56	0.4	07:30	17:04
23 Tue	1:21	1.9	13:53	1.8	7:33	0.4	19:52	0.5	07:31	17:04
24 Wed	2:12	1.8	14:48	1.7	8:26	0.4	20:48	0.6	07:31	17:04
25 Thu	3:02	1.8	15:43	1.7	9:18	0.5	21:43	0.6	07:31	17:04
26 Fri	3:52	1.7	16:35	1.7	10:10	0.5	22:36	0.6	07:31	17:05
27 Sat	4:42	1.7	17:25	1.8	10:59	0.5	23:26	0.6	07:31	17:05
28 Sun	5:30	1.7	18:12	1.8	11:46	0.5		0.5	07:31	17:05
29 Mon	6:17	1.7	18:56	1.8	0:13	0.6	12:30	0.5	07:31	17:06
30 Tue	7:02	1.7	19:38	1.8	0:58	0.6	13:12	0.4	07:31	17:06

JULY 2026										
New Moon: 14 th Full Moon: 30 th										
Date	High tide	Height (m)	High tide	Height (m)	Low tide	Height (m)	Low tide	Height (m)	Sun rise	Sun set
	AM		PM		AM		PM			
1 Wed	7:45	1.7	20:19	1.8	1:41	0.6	13:51	0.4	07:31	17:07
2 Thu	8:27	1.7	20:58	1.8	2:22	0.5	14:30	0.4	07:31	17:07

Only the best WAIHI TRADIES will do! Use Locals... For Locals... Support Locals!

GLAZIER



Baker Glass & Glazing Ltd

- Glass Repairs
- Shower Glass
- Splashbacks
- Balustrades
- Retro-fit Double Glazing
- Insurance Quotes

Member AMN Masterglaziers network Proudly supported by Metro Glass



Ph 021 514 497 | glass@bakerjoinery.co.nz

JOINERY



Baker Joinery Ltd
"Craftsmanship with care"

- Kitchens
- Joinery
- Wardrobe Solutions
- Laundry
- Bathrooms
- Pre-Hung Doors

For top-notch craftsmanship & expertise in joinery & cabinetry
contact 07 863 8962 | info@bakerjoinery.co.nz
Pop into our Show Room 46 Johnston St, Waihi
SHOW ROOM OPEN SATURDAYS 9AM -1PM

VETERINARY SERVICES




WAIHI 07 863 8684
WAIHI BEACH 07 863 7387

TYRE SERVICES



- Tyre Sales • Mag Wheel Sales
- Fitting & Balancing • Laser Wheel Alignment
- Motorcycle & Truck Balancing

ph: (07) 863 8555 32 Kenny Street
m: 027 303 1428 Waihi 3610
e: goldvalleytyres@gmail.com

TYRE SERVICES




Car, 4WD, truck, bus & tractor tyres
Tyre repair - Lease vehicles,
Wheel alignments & Mechanical,
All brands of tyres



48 Rosemont Road, Waihi
07 863 7508 • waihiytyres@gmail.com

PLUMBER



- Certifying Plumbers and Drainlayers
- CCTV Drainage Inspections & Drain Unblocking
- Plumbing Maintenance & New Builds
- Gasfitting & servicing

• All Hot Water Cylinder Repairs and Replacements
For all your plumbing and drain laying needs.
Contact David Anderson 021927405 Waihi
0211996236 Tairua/Pauanui • office@inchitplumbing.nz

FLOORING



Flooring Sales and Installation
FREE MEASURE & QUOTATION

Carpet, Vinyl, Wood & Laminate Flooring
SHOWROOM: 5/57 Wilson Road, Waihi Beach
Open 8.30am-4.00pm Monday to Friday
Saturdays by Appointment

Phone: 027 233 7277 | 07 863 5723
sales@owensflooring.co.nz owensflooring.co.nz

RENTAL PROPERTY MANAGER



FRIENDLY. LOCAL. RELIABLE.
RENTAL PROPERTY MANAGER - WAIHI

Call today! **Julie Cunningham**
027 549 2427

pggwre.co.nz | PGG Wrightson Real Estate Limited,
licensed under the REAA 2008.

OP SHOP

WAIHI ST JOHN OP SHOP
Recruiting Now!



Make a difference
IN THE WAIHI COMMUNITY

**Are you a Customer Service Superstar?
Magic Merchandiser? Keen Handyman?**
We are currently recruiting
for a variety of roles across various
departments in our Waihi Op Shop.

If you're keen to volunteer, pop in and ask to
see Store Manager Sam for a chat, or call her
on 07 863 9274 to find out more!

3 Silvertown Road Waihi

PLASTERER

PLASTERER
FIX+STOP

PATCHES, repairs, new
builds, skim, renovations,
coving, wallpaper removal.
Ph or txt 022-4266-151.

DIGGER HIRE / LANDSCAPING



- LANDSCAPING
- AUGER DRILLING
- SOAK HOLES & SERVICING DRAIN LAYERS
- TILE LINES FOR SEPTIC TANKS
- HOLES DRILLED FOR ORCHARD PLANTING
- POLE & STEEL SHED FOOTINGS DRILLED

FREE QUOTES AVAILABLE
022 158 0234 • 2moonsdiggerhire@gmail.com

ARBORIST & FIREWOOD



Arboricultural Contractors

TREE PROBLEMS?
Dismantle, pruning, removal, stump grinding. BIG or SMALL – we do them ALL!
0274 390 367
www.shortbacknsides.co.nz

FIREWOOD
Available all year round. Smoking chunks or dust, kindling, bagged wood. Delivery available or pick up on Fridays from 15 Dean Cres, Waihi. Gold Card discounts. Also 100s of native and exotic milled slab timber, garden mulch, smoking wood.
0274 390 367 or our firewood hotline 022 043 1862



MARKET TREASURE



HEY YOU!
HAVE YOU HEARD WAIHI'S
BIGGEST SECRET?

UNDERGROUND MARKET
HEART OF WAIHI

Seddon St, Waihi | OPEN 7 DAYS 9am-4pm

Only the BEST TRADIES will do! Use Locals... For Locals... Support Locals!

SMALL ENGINE REPAIRS

ANTS REPAIRS

Whangamata-based small engine repairs & maintenance

- Chainsaws • Lawnmowers
- Ride ons • Weedeaters

Anthony Law
121 Sharyn Pl • 021 0244 2791
ants.repairs.nz@gmail.com

LANDSCAPING

Beach Contractors
& Landscape Supplies

LANDSCAPING SUPPLIES:

Bark, mulch, compost and topsoil	Sand, lime chip, river stones and pebbles	Cement, builder's mix and a range of metals
----------------------------------	---	---

Delivery service available

Whangamata Yard: 2546 Waihi Whangamata Rd, M. 027 261 1262
Waihi Beach Yard: 691 Waihi Beach Rd, P. 07 863 5340

LAND DEVELOPMENT

Birch
LAND DEVELOPMENT CONSULTANTS

Subdivisions
Boundary Markings
Land Use Consents Topographical Surveys
Building Setout and Certifications

Contact us
0508 4 BIRCH
tairua@birch.nz
244 Main Road, Tairua
www.birch.nz

EARTHWORKS

Blackhill
EARTHWORKS
WHANGAMATA
Excavator, Bobcat, Truck
Earthworks specialists

Shay Mewse 021742966
Blackhillearthworks.co.nz

IT SUPPORT

Boot it.

FIBRE INTERNET
now available to order from Boot I.T.

We are the Coromandel's only local Fibre Internet Provider, and the ONLY provider that offers 7 days per week support.

Call us on 0800 242 266 to find out more.

CONCRETE

BROWNMORE CONSTRUCTION
CONCRETE CONTRACTORS

Any Concrete Requirements: Slabs, driveways, patios, paths, etc
All types of concrete - colour - finish
Council Permits for Vehicle Crossings
Excavation to finished product • Saw cutting & drilling

We take pride in doing a quality job at a competitive rate

REX: 027 285 5489
P. 07 863 3364 • office@brownmoreconstruction.co.nz
www.brownmoreconstruction.co.nz

PAINTER & DECORATOR

Gavin Johnson
PAINTER & DECORATOR

Interior/Exterior Painting
Wallpapering
Cedar Cleaning and Restoration Service

0224 552 363
brushstrokeswhangamata@gmail.com

BRUSH STROKES
PAINTERS & DECORATORS
PH 0224 552 363 WHANGAMATA

DIGGER & CARTAGE

COAST DIGGER & CARTAGE

- Digger & Tip Truck Hire
- Driveways
- Building Digouts
- Site Works
- Concrete removal
- Track work
- Hole Drilling
- Tree Felling & Removal

Murray Clarke 027 2010 209
muzzclarke66@hotmail.com

HOME IMPROVEMENT

Coastal Home Improvement

Small business - local through & through

- Aluminium Fences, Pergolas & Structures
- Renovations
- Showers
- Laminate flooring
- Wooden Decks, Fences & Pergolas
- Projection and Track Awnings
- Repairs and more....Just ask

Tony Fraser 027 350 6948 CoastalHomeImprovement
coastalhomeimprovement@outlook.co.nz

PAINTER

Coastline Property Painters

Protecting your investment Communication is everything
Interior Exterior Roofs Updates & photos as your job progresses

Call Richard Upton: 0274 884 881 / www.coastlinepropertypainters.com

OUTDOOR COVER

Covered.

- Louvres
- Privacy Panels
- Awnings
- Sails

LOUVRESYSTEMS

info@covered.co.nz 07 865 6207 or 027 497 1236
www.covered.co.nz 300 Casement Rd. Whangamata

CURTAINS / BLINDS

Curtains and Blinds and More Whangamata

LOCALLY OWNED AND OPERATED

- Curtains
- Venetian Blinds
- Roller Blinds
- Romans Blinds
- Shutters
- Honeycomb Blinds

100% Mobile Service
We come to you, Free Measure and Quote

Call Louize or Gavin on 027 4777 916
or email info@curtainsandblinds.co.nz

FRAMING

FRAMESNZ

- Picture framing
- Framed mirrors
- Art installation
- Pick up & delivery

Ade Cunningham
M. 0274 929 695 or P. 07 575 9149
info@framesnz.co.nz • www.framesnz.co.nz
300 Port Rd (corner of Ajax Rd), Whangamata

SHUTTLE SERVICE

Find us on Facebook!

AIRPORT & PRIVATE SHUTTLE

- Door-to-door service.
- 11 pax + luggage. Spacious. Air-conditioned.
- Airports. Weddings. Sports Events.
- Outdoor Adventures.

Enquiries & bookings: gcadventures2026@gmail.com

Gareth & Gem Body Work Gym

ADVERTISING

Whangamata & Waihi NEWS

By Locals, For Locals,
About Locals! Home delivered.

Call Jennie 021 0232 1661.

Use Only the Best Services in our Community! Use Locals... For Locals... Support Locals!

HANDYMAN

HANDYMAN

30 yrs experience, specialising in:

- Bathroom, deck & building repairs
- Gib fixing & plastering
- Interior /exterior painting

Please ring Rex on 021 997 428

BUILDING & LANDSCAPING

HBL HANSEN BUILDERZ BUILDING & LANDSCAPING

COMMITTED TO EXCELLENCE

Contact us to discuss your project & a free estimate today



ADRIAN 0274 263 895 | hansen.builderz@gmail.com | HBLHomesnz
Residential | Commercial | Alterations | Additions

ARCHITECTURAL BUILDERS

HOME & Lifestyle

- Architectural Builders
- Interior & Colour Design Services
- Project Management

For trusted expertise with your building project

Katrina Jackson 027 273 0685 | Leigh Goodman 027 4475 423
info@homeandlifestyle.co.nz

BUILDING WASHING

HOUSE WASH

Exterior house or commercial building wash, roof wash, fences, driveway, patios – soft-wash for best moss and lichen clean and treatment, exterior window cleaning, or general water blasting, 100m of hose so access is no problem.

Prompt local service with 22 years' experience.

Ph 0800 747 787 email atlasgroup@xtra.co.nz or dial Andy direct on 027 313 4386

CLEANING



we'll take care of it *

- Carpet Cleaning
- Pest Control
- Flood & Fire Restoration
- Stain Removal
- Upholstery Cleaning



From Waihi to Whangamata
07 863 8358 or 0800 225 552
whangamata@jae.co.nz



AUTOMOTIVE & BOATS



BOAT TRAILERS, CARS, CLASSIC & HOT RODS

ONLY Repco STOCKIST IN TOWN!

ONLY HONDA AGENT IN TOWN!

Aickin Road, Whangamata (next to Bunnings)
P. 865 9073 | E. office@jcdcustoms.co.nz
Mon-Fri from 8am

CHILDCARE

Jemma's Homebased Childcare - Recruiting Now
Passionate about children & their learning?



- Work from home and make a real impact
- Free training & level 4 study
- Smaller group size/build stronger relationships
- Create learning experiences reflecting your values

Join our supportive whānau today!

Be part of a rewarding role where your work makes a difference

Call Jemma's: 0800 536 627

| info@jemmas.co.nz | www.jemmas.co.nz

CONCRETE SERVICES

KARTIN CONCRETE SOLUTIONS LTD

- Concrete Polishing
- Concrete Grinding
- Drilling & Cutting • Block Honing
- Sealing and Masonry Applications
- Licenced Sto Applicators

Email: info@kartinconcrete.co.nz
Phone: 0274 954 957

HOME BUILDERS

Whatever the site, we'll help you create the perfect home.

Jennian HOMES

614 Port Rd, Whangamatā E: coromandel@jennian.co.nz P: 07 865 6767



TRAVEL BROKER



Kay Gregan
The Travel Designer



AWARD-WINNING TAAZ BONDED TRAVEL BROKER
Travel Broker & CLIA Accredited Cruise Specialist
2025 Inaugural Brand USA Ambassador
Whangamata 07 865 9568 | M: 027 337 6222
Kay.Gregan@thetravelbrokers.co.nz
thetravelbrokers.co.nz/kaygregan

ELECTRICAL

For All Your Electrical Needs



Now Open In A Second Location
Introducing Laser Electrical Waihi

WAIHI 07 863 7746 WHANGAMATA 07 865 9309
waihi@laserelectrical.co.nz whangamata@laserelectrical.co.nz
40B Kenny Street 100 Lindsay Road

DELIVERERS WANTED

DELIVERERS WANTED IN WHANGAMATĀ



GET PAID TO GO FOR A WALK

Hottest delivery rate in town, \$20 per route at rate.

One delivery per fortnight with a 2-3 day window to deliver. Most routes take approximately 1 hour.

Whangamatā & Waihi NEWS

Contact Jennie Black 021 0232 1661 or email whangamataneews@gmail.com

Only the BEST TRADIES will do! Use Locals... For Locals... Support Locals!

LOUVRES

Engineered for Life
LouvreTec
OPENING & RETRACT ROOFS
SUN LOUVRES / SHUTTERS
07 574 6040 office@louvretec.com
www.louvretec.co.nz
free no obligation quote & site visit

KITCHENS

McBeth Rd Orchard Joinery
Affordable joinery
Kitchens new or upgraded
Laundries & bathrooms
Wardrobes & storage units
Free estimates
Tony & Nicky Ball - 027 229 2255
Whangamata

BUTCHER

MEAT AT THE BEACH
Come into the local butcher and find:
BBQ meat, in store made sausages, patties,
tasty chops, steaks, butterflied chickens & much more.
'The home of Whanga bacon & Whanga Black Pudding'
601 PORT ROAD, WHANGAMATA P. 07 865 7241
MON-FRI 8.30AM-5PM • SAT 8.30AM-3PM

PODIATRY

Pedicare Services
Professional Foot Care
Alison Walkington
Registered Nurse
Home visits by appointment
Mobile 027 663 2320 or
email alison.c.walkington@gmail.com

ELECTRICIAN

GREG HENSTOCK ELECTRICIAN LTD
Registered Electrician
One Man Band
WHANGAMATA
0272 580 366

ELECTRICIAN

PITCHER ELECTRICAL
YOUR TRUSTED
MASTER ELECTRICIAN
working in Whangamata,
Opoutere, Onemana and
Whiritoa
**RESIDENTIAL AND
COMMERCIAL SERVICES**
TONY PITCHER 0274 589 573

PEST CONTROL

Professional Pest Management
Say goodbye to unwanted pests -
spiders, ants, wasps, cockroaches,
rodents & more!
We offer a safe, effective pest
management solution tailored to suit
your needs.
Contact us today for a pest-free home
or business. Locally owned & operated.
STEPHANIE FRITH - QUALIFIED TECHNICIAN
pestpros@outlook.co.nz | 027 3211 796 | www.pestpros.co.nz
Whangamata & Surrounds
A member of Pest Management Association of New Zealand

WINDOW CLEANING

Pure n Clean
Your ecofriendly window
cleaning service.
Mike Horton M 021 501 324
info@purenclean.co.nz www.purenclean.co.nz

HEAT PUMPS

Reef REFRIGERATION &
AIR CONDITIONING LTD
Stay comfortable all year round
• Heat Pump & Air Conditioning Specialists
• Expert Design & Maintenance
• Servicing & Preventive Maintenance
Trusted local expertise. Reliable Service.
Free, no-obligation quote.
Ph 07 865 9222 • contact@reefrigeration.co.nz

ROOFING

RIKKI ROOFING
we aim for the roof shout
Residential re roofs & new roofs
Spouting
Cladding
Maintenance & re screws
Rikki Daysh, Owner/Operator
022 408 8424
rikkisroofing@gmail.com

PLUMBER

Russell CHOAT
GAS & Plumbing
Whangamata
FOR ALL YOUR GAS-FITTING, PLUMBING,
DRAINAGE & ROOFING REQUIREMENTS
Registered craftsman & member
of Master Plumbers
M. 0274 714 869 E. office@choatsplumbing.co.nz

ELECTRICIAN / DOG GROOMER

Rusty Sparks
EVERYTHING
ELECTRICAL
Residential, Commercial,
Data, Alarms
@ 021 800 017
admin@rustysparks.nz
PIMPED PUPS GROOM ROOM
@ 021 850 017
WHANGAMATA

WINDSCREEN REPAIRS

secureglass
For all your
windscreen
needs!
021 617 664
secureglassltd.co.nz
MONDAYS:
RSA car park, Whangamata
TUESDAYS:
Fresh Choice car park, Waihi
FRIDAYS:
Goldfields car park, Thames

ADVERTISING

Whangamatā & Waihi NEWS
By Locals, For Locals,
About Locals! Home delivered.
Call Jennie 021 0232 1661.

Use Only the Best Services in our Community!

Use Locals... For Locals... Support Locals!


BUILDER



RESIDENTIAL SERVICES
LBP Builder / Renovation Specialist
07 865 6555 / 027 238 1659
skfrs@xtra.co.nz

BINS

Skip Bins, Wheelie Bins, Front Load Bins
Contact us today! *We can help!*



0800 4 MY BIN - www.smartbins.co.nz
Proudly 100% Kiwi owned

BOARDING KENNEL / CATTERY



SPOT X
BOARDING KENNELS AND CATTERY

Quality care and facilities in a rural setting
Office hours: 9am-12 noon and 3-5pm daily
INSPECTION WELCOME
Ph 07 865 8242 or 027 624 3890
Annette Gillatt
4km south of Whangamata on the main road

REFRIGERATION & AIR CON

TIDELINE REFRIGERATION
WHANGAMATA

- HEAT PUMPS
- REFRIGERATION
- AIR CONDITIONING
- VENTILATION

SERVICING IN THE COROMANDEL AREA
0272121994 - 0277251820
TIDELINEREFRIGERATION@GMAIL.COM
WWW.TIDELINEREFRIGERATION.COM

TREE SPECIALIST



- Tree felling & pruning
- Hedge trimming
- Stump grinding
- Fully insured
- Qualified arborist

TREECARE WHANGAMATA LTD
Contact 022 648 8150
treecarewhangamata@gmail.com

DIGGER HIRE / LANDSCAPING



2 MOONS DIGGER HIRE
EXCAVATION & AUGER DRILLING

LANDSCAPING
AUGER DRILLING
SOAK HOLES & SERVICING DRAIN LAYERS
TILE LINES FOR SEPTIC TANKS
HOLES DRILLED FOR ORCHARD PLANTING
POLE & STEEL SHED FOOTINGS DRILLED
FREE QUOTES AVAILABLE

022 158 0234 • 2moonsdiggerhire@gmail.com

LAWYERS

USSHER LAWYERS

We can help with all of your general legal needs

- Conveyancing if you are buying or selling property
- Sale and purchase of business assets • Commercial leasing
- Relationship property • Trusts • Wills • Enduring powers of attorney

www.ussherlawyers.co.nz | Phone 07 865 8824
We've moved - now at 123 Lindsay Rd, Whangamata

WARDROBES

WD WARDROBES DIRECT

Steve Parkinson
Central, East & South
021 0733 100
steve@wardrobesdirect.co.nz

ALSO SERVICING WHANGAMATA
www.wardrobesdirect.co.nz

Showroom and office:
175 Marua Rd
Mt Wellington

LAUNDRY

WHANGA LAUNDROMAT



"The only locally owned & operated laundromat in town!"
OPEN 24 HOURS - 7 DAYS A WEEK
CASEMENT RD, WHANGAMATA (OPPOSITE WAITOMO FUEL)

SCAFFOLDING



- Mobile scaffolding
- Roof edge protection
- Construction scaffold

Servicing Whangamata and surrounding areas

Please ring 022 076 0160 or email whangamatascaffolding@gmail.com
102 Lindsay Road, Whangamata Est 2014

TYRE & BATTERY SERVICES

WHANGAMATA TYRE & BATTERY



KUMHO TYRES 7

Car tyres / Wheel alignment
4WD tyres / Tyre repair
Wheel balance
Small implement tyres
Batteries - car & marine

Phone Simon 865 7698

CHALLENGE Cnr Port & Ocean Rd, Whangamata
www.challenge.net.nz

WINDOW & DOOR SERVICES

WHANGAMATA WINDOW & DOOR SERVICES

Bryce Hall
M. 027 282 2057
Ph. 865 9714

Reglaze // Repairs // Maintenance
Retro Fit Double Glaze

whangamatawindowdoorservices@xtra.co.nz

HOME SERVICES

YourLocal
NZ's Trusted Home Services

Avi@yourlocal.nz - www.yourlocal.nz - 022 534 5478

We specialise in

- Exterior house wash, windows, driveways, patios, decks, fences & roofs
- Commercial, residential, rural, new builds & painters prep
- Pests treatment (fumigation)
- Rodents & wasps
- Chimney sweeping
- Roof treatments

BUSINESS FRANCHISE FOR SALE

We cover Coromandel, Thames, Waihi, Waihi Beach, Whitianga, Whangamata

GRAPHIC DESIGN

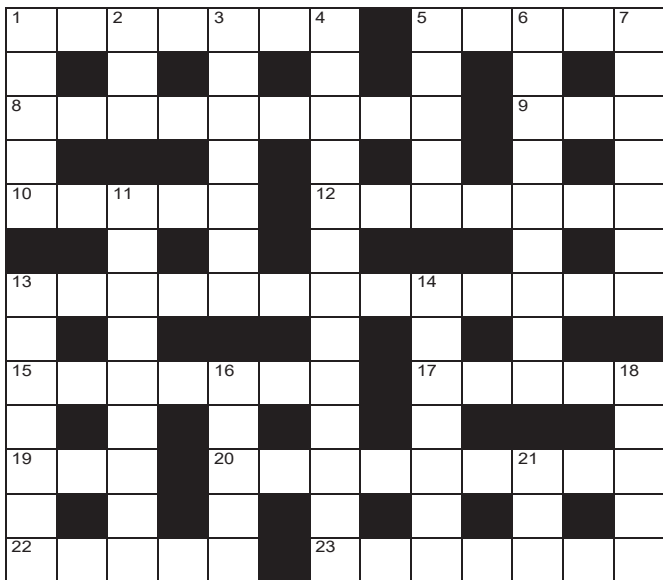
For your graphic design needs

Contact Anna Gledhill
whangamatanewsart@gmail.com

Designer for Whangamatā & Waihi News



QUICK CROSSWORD



- Across**
- Collector's item (7)
 - The same (L) (5)
 - Lose your temper (colloq) (4,1,4)
 - Decorate with frosting (3)
 - Matched (5)
 - News (7)
 - Barely honest business dealings (5,8)
 - Obvious (7)
 - Famous person (abbr) (5)
 - Lowest prime number (3)
 - Similar (9)
 - Class in Hindu society (5)
 - Moscow landmark (7)
- Down**
- Hawser (5)
 - Fuss (3)
 - Mollusc with fan-shaped shell (7)
 - Fight back (13)
 - Fear (5)
 - Every three years (9)
 - Supervise (7)
 - Agreed by all (9)
 - Someone who doubts accepted beliefs (7)
 - Violent windstorm (7)
 - Dodge (5)
 - Bowl-shaped container (5)
 - Lubricate (3)

All puzzles © The Puzzle Company

SOLUTIONS

SUDOKU

9	1	6	4	2	7	5	3	8
4	5	3	1	4	5	7	2	8
2	8	7	5	3	1	6	9	4
6	4	1	3	5	2	7	8	3
3	7	2	9	1	8	4	5	6
8	9	5	7	4	6	3	2	1
5	6	8	2	7	4	9	1	3
1	3	4	8	9	5	2	6	7
7	2	9	1	6	3	8	4	5

DECODER

A	H	I	J	K	L	M	N	O	P	Q	R	S	T	U	V	W	X	Y	Z
1	2	3	4	5	6	7	8	9	10	11	12	13	14	15	16	17	18	19	20
1	2	3	4	5	6	7	8	9	10	11	12	13	14	15	16	17	18	19	20
A																			
A																			

CRYPTIC

- Across:** 1. On cloud nine; 8. Snaffle; 9. Chase; 10. Slip; 11. 20ac & 12dn. Lock stock and barrel; 14. Brazen; 17. White heat; 22. Roost; 23. Persona; 24. First cousin.
- Down:** 1. Oasis; 2. Clapper; 3. Offal; 4. Drench; 5. Incisor; 6. Erato; 7. Reckon; 12. Byword; 13. Ejector; 15. Zealous; 16. Despot; 18. In-off; 19. Turbo; 21. Drawn.

CROSSWORD

- Across:** 1. Classic; 5. Ditto; 8. Blow a fuse; 9. Ice; 10. Equal; 12. Tidings; 13. Sharp practice; 15. Evident; 17. Celeb; 19. Two; 20. Analogous; 22. Caste; 23. Kremlin.
- Down:** 1. Cable; 2. Ado; 3. Scallop; 4. Counterattack; 5. Dread; 6. Trenial; 7. Oversee; 11. Unanimous; 13. Sceptic; 14. Cyclone; 16. Evade; 18. Basin; 21. Oil.

SUDOKU

Fill the grid so every row, column and 3x3 box contains the numbers 1-9

				3				5
1		4	8				6	7
5			2	7		9		3
			7			3		1
	4			5			8	
3	2			8				
2	7		3	1				4
4	5			9				2
9			4			5		

EASY

		8	7		1			
		9			4	8		
3	1		5					9
			4		8	9	7	
7	8	1			3			
8					9		4	1
	7	3			5			
		6			7	9		

HARDER

DECODER

Each number below represents a different letter. Find the correct letter for each number by working out the word from the letters given. To keep track, cross the letters off on the grid below.

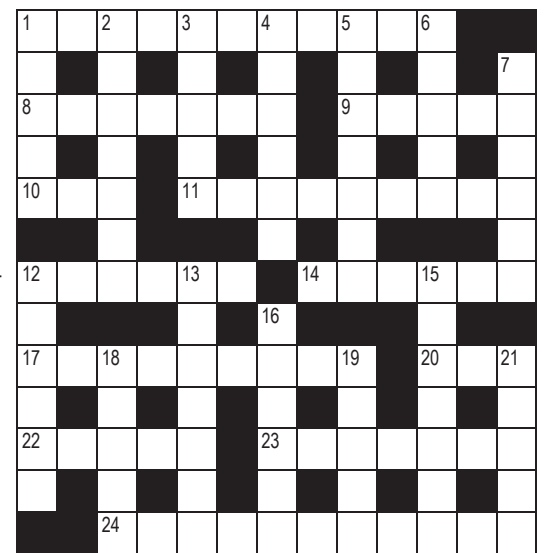
26	3	25	8	14	26	10		18	21	22	22	15
21		21				3		21		24		9
14	17	14	2		5	17	20	20	18	9	19	7
17		19		26		14		5		25		1
12	22	4	3	14	26	9	22	3	5			25
		3		12		25		18		11		20
6	22	9	19	20	11		3	18	21	22	14	21
14		12		11		20		22		13		
26			26	22	19	5	9	5	25	20	19	25
10		23		19		26		20		26		14
14	24	20	21	9	26	14	19		18	22	21	10
5		21		14		18			25		20	
5	17	22	21	19		20	16	18	21	20	5	5

ABCDEFGHIJKLMNOPQRSTUVWXYZ

1	2	3	4	5	6	7	8	9	10	11	12	13
14	15	16	17	18	19	20	21	22	23	24	25	26
A								R	O			

CRYPTIC CROSSWORD

- Across**
- Elated to be half-way round the heavenly golf course? (2,5,4)
 - Steal a bit (7)
 - Hunt land (5)
 - Is back on to the soft drink (3)
 - 11, 20ac & 12dn. A piece of hair, some flowers and a cask of wine – is that everything? – Yes! (4,5,3,6)
 - No ego but bold from the Bronze age (6)
 - The wheat I turned into the brightest flame (5,4)
 - See 11
 - Stay the night in Kanga street (5)
 - Pearson's character (7)
 - Fruit scions of a close relative (5,6)
- Down**
- Mindless admission to haven (5)
 - A board from the set (7)
 - It's part of fallow deer remains (5)
 - Children change inside and get a soak (6)
 - One of what I wanted for Crithmas (7)
 - Orate and become a Greek muse ... (5)
 - ... think, count (6)
 - Proverb heard at the auction? (6)
 - He may give the member a big tick (7)
 - Saul & Zoe became very eager (7)
 - The dictator finds direction in the station (6)
 - It's pocketed at the table (2-3)



- 19.** No ado about outboard engine booster (5)
21. A tired tie (5)

WEDNESDAY
Wings

\$1 per Buffalo Wing !!

Grab as many as you'd like but remember, they're dine in only.....

Available from 4:30pm until sold out
NO TAKEAWAYS.

PASTA THURSDAY

choose one of our pastas and grab a pint off tap or glass of haus wine for only \$24.00

FRIDAY
Shout

@2:30pm - 5:30pm
Every Friday !!!

\$12 Pints
\$12 Pizzas
\$12 Wines
\$12 Cocktail

Takeaway pizzas are full price.

SHELLFISH SATURDAY

GRAB 1KG OF NZ GREENLIPPED MUSSELS IN A THAI GREEN CURRY SAUCE & A PINT OF TAP BEER OR GLASS OF HOUSE WINE

ONLY \$25.00

GIVE A SCHNIT SUNDAY

Grab a chicken OR pork schnitzel served with fries, salad & gravy matched with a pint of tap beer OR glass of haus wine.

ONLY \$20

conditions apply