

PARADISE COAST

Whangamatā NEWS

ISSUE 106 - 1 DECEMBER, 2023

FREE COPY
PLEASE TAKE ONE!



RepcO
BEACH HOP

Win this beauty!
The 1966 Ford Mustang has arrived - PAGE 5

Support the 2024 Repco Beach Hop programme

Business support is vital to success.

Photos by Mark James



BY LOCALS, FOR LOCALS, ABOUT LOCALS.

f
LIKE US!

WE WELCOME YOUR CONTRIBUTIONS!
EMAIL WHANGAMATANNEWS@GMAIL.COM • FACEBOOK [@WHANGANews](https://www.facebook.com/WHANGANews)

SEE ALL OUR EDITIONS LIVE AT WWW.WHANGAMATANews.NZ
EDITORIAL & MEDIA SALES:
JENNIE BLACK - 021 0232 1661

HOME DELIVERED TO WHANGAMATA

Local practitioner tells all

Not Just a GP: More than just a memoir
by Tony Townsend

More than just a memoir. Based on the author's 50 years of medical practice, teaching, and writing but supported and expanded by the international medical literature.

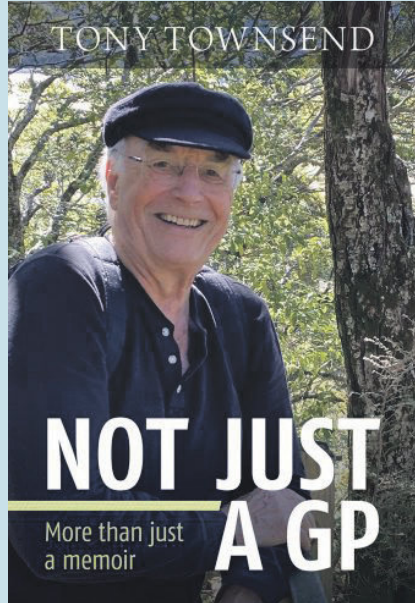
I remember my friend and mentor, Pat Farry, saying more than once, 'You might be just a country boy, but you are never just a GP.' This book is about what GPs do and how they do it. Although written as a memoir, it champions general practice as an essential medical specialty.

This is a short book about general practice medicine written for the public. I include insights into decision making, systems thinking, pattern-recognition, and advocacy. There are also chapters on emergency care, boundary issues, bias, medical errors, death and dying and the importance of teaching and learning in medical practice.

- Medical culture and practice demystified.
- Modern medical controversies explored.
- Draws on medical history as the key to understanding the present and planning for our future.

About the author

Tony graduated from the University of Otago Medical School in 1969 and started his own general practice in 1974. He graduated Master of

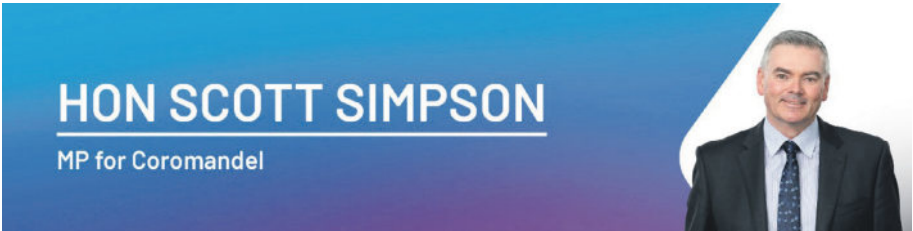


General Practice in 1995 and was appointed a Member of the Order of Merit for services to health in 2015.

During the last 50 years general practice has evolved from a male dominated, paternalistic, poor cousin, healthcare profession to a comprehensive, more gender equal, evidence-driven, specialty that is the cornerstone of modern medical care. But a number of these advances are now under threat. It is essential that we protect the principles that define this medical specialty.

Contact information

Bookshop orders can be made through The CopyPress. Email books@copypress.co.nz Libraries can order through Wheelers. Also available through Fishpond.



Mahi to be done

As Christmas and the holiday season approaches, there's still a bit of work to do in politics before we can close out 2023.

The prospect of our new government getting down to work and getting our country back on track is exciting from my point of view.

This is the first time in our history of MMP that we have had three parties in government and as they say the voter is always right. Now we will hunker down and work together to bring about the changes necessary to right the ship and restore the confidence that Kiwis used to have in themselves and our country.

The usual formalities and ceremony of a new Parliament will take place in early December, including the swearing-in of new and returning MPs. We'll also hear what's called the Speech from the Throne. This

is where the Governor General reads a speech setting out the government's legislative agenda for the next three years. Once this is completed, we can get on with the job voters elected us to do. I'm expecting Parliament to work right up to Christmas and that'll be a good thing.

Personally, I'm looking forward to getting stuck in and continuing to be the voice of the Coromandel in Parliament. Like most of the country, we have our fair share of issues, but I'm optimistic for what's ahead. The reopening of the Kopu-Hikuai highway before Christmas will be a massive boost to our entire region. It will mean more people travelling through our towns and spending their money over summer. Exciting times!

- Authorised by Scott Simpson MP, 614 Pollen St, Thames

Welcome to the first December 2023 edition of Whangamatā News

- a magazine By Locals, For Locals, About Locals

Whangamatā NEWS		www.WhangamataNEWS.nz	
EDITOR & SALES DIRECTOR Jennie Black Phone 021 0232 1661 WhangamataNews@gmail.com	PUBLISHING Printed by Beacon Media Group. Published by Whangamatā News 2021 Ltd	All content featured in Whangamatā NEWS Limited is subject to copyright in its entirety and may not be reproduced in any form without permission from the Publisher. Any material supplied for publication is at the submitter's risk. All information is believed to be true by the Publisher at the time of printing. Views expressed in Whangamatā NEWS Limited are not necessarily those of the Publisher.	
SPORTS REPORTER & PHOTOGRAPHER Mark James Phone 021 668 469			
ART DIRECTOR Anna Gledhill WhangamataNewsArt@gmail.com			

Scott Simpson

MP for Coromandel

Contact me anytime
0800 550 330 • scottsimpson.co.nz
mpcoromandel@parliament.govt.nz
f [scottsimpsonmp](https://www.facebook.com/scottsimpsonmp)

Authorised by Scott Simpson, Parliament Buildings, Wellington.

For advertising queries contact Jennie Black
Editorial/Sales Director
Phone 021 0232 1661 or 0272 108 190
jennieablack@gmail.com

We welcome your letters, articles, photos, news tips and advertising enquiries.

- We ask that articles be no more than 250 words, although exceptions can be made.
- Photos should be high resolution and in focus.

For editorial or photographic matters, phone Jennie on 021 0232 1661 or email WhangamataNEWS@gmail.com

BREWERY

CELLAR DOOR HOURS:
THURS: 2 - 6PM
FRI & SAT: 12 - 6PM
101B WINIFRED AVE
Behind Whanga Bar cafe

www.saltdistrictbrewing.co.nz

Police report

Skateboarder injures Pedestrian

Recently a pedestrian crossing a marked pedestrian crossing on Port Road was hit and injured by a person riding an electric skateboard. Moments earlier, the skateboarder was seen riding at speed on Port Road in the opposite direction.

Police have eventually caught up with the rider who did not want to hang around for our arrival. The rider has been charged with careless or inconsiderate operation of vehicle causing injury and will appear in the Waihi District Court at a later date.

Liquor Ban applies to all

Being a 'local' gives even more reason to know the rules when it comes to the liquor ban.

Very soon the ban will come into force and it is important that everyone is aware. Often we get the odd person who likes to drop an officers name in the hope to get off a \$250 fine. Doesn't wash sorry team, same rules for all.

Head to the TCDC website for more information on dates and locations. Remember to remind your visitors of the rules also.

Think safety and limit opportunities

What I am referring to here is a message to our local businesses, particularly those with Al Fresco dining.

I am asking businesses with outdoor furniture used for dining or otherwise to begin placing it



all inside at night when closed/not operating. There are several reasons for this, being:

- People love to get a deal on outdoor furniture/ornaments for their summer
- They could be used to damage the businesses or property
- Most of all they can become weapons against persons, especially Police

I will approach our friends at council to assist with this prevention measure, but really it is an easy and good thing to get into the habit of doing, not to mention part of the Al Fresco licence rules

Whangamata Raceway

I only refer to it as that because the speeds detected are again getting ridiculous.

The speed limit on Hetherington Road/Harry Watt Drive between Old Pub Road and Martyn Road is still 50km/h team. It hasn't changed and probably will not change any time soon.

If you're going too fast there will be no warnings. Children, families, cyclists all use that road. Take a moment to think what will happen when it goes wrong if you're driving too fast.

- Sergeant Will Hamilton,
Officer in Charge,
Whangamata Police



Climate

Diverse commentary over the past seven days has illustrated the wide spectrum of climate opinion.

We began with senior scientific questioning of the validity of off-setting fossil fuel consumption through the ETS with tree planting as the saving grace. It is highlighted that no matter how vast the areas of plantings, it is simply folly to assert that mitigation is possible to achieve under the current levels of fossil fuel consumption. Threats of wild-fire, storm damage and the sacrifice of productive arable land insignificant it seems.

On the same day we had suggestions that the answer was widespread lifestyle change led by Government and business, suggesting "the people will follow".

Next, there was an alarming article claiming that large tracts

of dairy farming land were under threat from sea level rise accompanied by a farcical image beef cattle (not dairy) surrounded by flood water. The proximity to sea level not indicated. The fact that sea level changes over the past century have been barely discernible seems to have escaped the author. Some will recall early "modelling" that had us foundering under 3 metres of sea level rise by 2010.

A report then followed pointing out that global emissions continue to increase despite commitments to curtail pollution. Easy enough to make promises, harder to follow through.

And so to the ultimate irony with COP28 being hosted by the UAE with their oil-soaked wealth and political hand wringers flying in from all over, blissfully unaware of their hypocrisy.

George Williams
WHANGAMATA

Lemon Jelly Sunny
Available in 3 colours
\$129

Made in Portugal

Whitianga 07 866 4465 | Whangamatā 07 865 8088
WWW.TANGOSSHOES.NZ

AfterPay, Zip & Laybuy welcome.

Christmas Buffet

25th December at 4pm

Bookings now open!

Call us at 021 0266 4992

Hurry up! Limited seats available!

DID YOU KNOW?

All New Smash Pipi

All Day Eatery | Bar & Cafe

Under New Management

New Look
New Owners | House of Panhead Custom Ales On Tap & Live Music Saturdays

PANHEAD SMASH UP

SMASH PIPI LAUNCH PARTY

FRIDAY 8TH DECEMBER

JOIN SMASH PIPI AND PANHEAD CUSTOM ALES TO CELEBRATE THE NEW PANHEAD BEERS ON TAP WITH A GUIDED BEER TASTING WITH PANHEADS BRAND AMBASSADOR & EXPERIENCED BREWER, GLOBAL STREET SNACKS, LIVE MUSIC & PANHEAD MERCH GIVEAWAYS!

LIVE MUSIC, CUSTOM BEERS | GLOBAL STREET FOOD CANAPES | MERCH GIVEAWAYS

TICKETS: \$39

You must be 18 years or older to participate. Host responsibility rules and limits apply. The Promoter is Lion, 136 Fanshawe St, Auckland Central, Auckland, 1010

It Takes Two

On September 21, 2019, I lost my sister Sally to suicide, an event that changed mine and my family's life, forever.

My name is Corey Choat and at 6pm on 24 November, in Whangamatā, I ran two minutes for each of the 538 people we lost to suicide in New Zealand last year. That's just under 18 hours of running.

If I stop, the watch stops. Each person will be remembered.

This run is named 'It Takes 2' because it only takes two people - one to check in and one to open up. One to listen without judgment and one to finally feel heard.

The run was to remember the 538 people we lost to suicide last year, but it is also to raise mental health awareness and funds for Gumboot Friday. An amazing charity who provides support and free counselling for Kiwis 25 years and under.

For those who joined me for my 10-hour run last year, the plan was very much the same. Corey used the rugby club as the base for the run and ran a few different loops around



town. They were 6km and 3km running loops as well as a 750m walking loop.

Corey started the run at 6pm on Friday and continued through the night until he ran for 18 hours. The goal was to complete a triple marathon, or around 130km, so the

more support he got, the stronger he became.

"By sharing our struggles, we break the silence surrounding mental health and we begin to create an environment where those in need feel understood and supported.

Let's recognize the importance of expressing what our friends and



family mean to us now, not waiting until it's too late. We must check in often, not relying on others to initiate these conversations.

Together, we can create a community where mental health is a priority, and no one feels isolated in their struggles."

In memory of Sally and the countless others, it's time to make a difference, one step and one conversation at a time.

If anyone has any questions or wants to know more, feel free to give me a message on Instagram @runningforsal.

- Corey Choat

Whangamatā News caught up with Corey at 6 pm just at the very start of the race. "I'm feeling excited and a little bit nervous, but I've done the training. I'm really grateful for all this support as always, losing 538 lives this last year will be on my mind the whole way round, everything I'm doing for the run is for Sal, it's peaceful running through the night and I will think of her."

Congratulations Corey, you are a legend, a super-achiever, a leader, teaching us to reach out, without judgement to those that need us!

- Jennie Black



A younger Corey with his sister Sally.



Come in store for our Christmas special:

FREE bike lock

with every bike sold in December and a chance to

WIN a Christmas hamper pack filled with goodies

with any purchase between 1st-19th December.

Winner will be drawn 20th December.

New owners! Jenny & Geordie, locals in Whangamatā for 12 years!

www.whangamatacycles.com

Phone 865 8096

700 Port Rd, Whangamatā

Major 2024 Repco Beach Hop prize arrives

Whangamatā News was thrilled to catch up with Noddy Watts and get the opportunity to have a photo shoot on the wharf of the 2024 major prize 1966 Ford Mustang.

"We weren't going to give away a vehicle for Repco Beach Hop 2024, but being the 60th Anniversary of the Ford Mustang and Ford being one of our major sponsors, we thought what the heck.

We are renowned for doing it, so we thought we wouldn't buy one from America, there's plenty of Mustangs in NZ, and we found this one online, and bought it sight unseen but it's a really good car, and a lot better than we thought it would be. It only needs a freshen up of the interior, its registered, warranted and its had modified brakes, power disk brakes and its LVVTA certified, so its already to go, someone will drive it home on the day, 23 March, 2024, valued at more than \$50,000!

"It has an A code, 225 Horsepower, factory, 4 barrel carburettor, the original 289 cubic inch V8 engine in it with automatic trans. Andrea and Noddy drove it up from Wellington,



the car never missed a beat and sat at 65 mph the whole way and it was a pleasure to drive".

Classic Cover Insurance (a major Sponsor to Repco Beach Hop) who have been with the event a long time, they insured the car as soon as

we bought it for the road trip north to Whangamatā.

But there's more... the winner will get another 12 months Insurance with it, as part of the deal. KiwiPlates just sponsored a set of plates for it, and The Pits (Motor Sports Apparel specialists for Ford) have donated two Mustang jackets and T-shirts, key rings, hats and all branded to go with the car!

Noddy went on to tell us "entries opened up on the 1st of October and we had 400 cars entered in the first 7 minutes, making it 600 cars entered within 15 minutes, so it shows the interest in the festival is really strong

Here is the crunch...

The 2023 Beach Hop was the first time the festival ran at a loss. Noddy told us "that's really sad, but thankfully due to the kindness of a couple of very strong supporters of the festival, we were able to get us through".

The reason for that were "we didn't print as many programmes, so sales were down, and that is because we didn't get the local advertising

support for it, the fear of the road collapsing between Waihi and Whanga, kept people away, getting messages on the day, despite the beautiful day, needless hysteria".

A number of factors led to revenue being down, but we are on track for 2024, which is why we have pumped up numbers of vehicle entries for more income.

"We ask our local business to advertise in the programme because we don't ask them for sponsorship really, but every programme that's printed and we sell is 100% profit for us, it's one of our biggest single income source for the festival and we can't produce the programme without local business support". It's the only way to WIN the Mustang, a brand new Harley Davidson and \$10,000 cash.

"Support us by advertising with us in the programme and join some fantastic advertisers who have been with us from day dot".

You can contact Jennie Black at Whangamatā News for all sales bookings and collateral will be out soon, or call her on 021 0232 1661 - be a part of it!



\$1 WING WEDNESDAY



GRAB AS MANY OR AS FEW AS YOU WANT
CONDITIONS APPLY - DINE-IN ONLY

Follow us on Facebook & instagram to keep up to date with all our events & deals @crafthauswhanga

THREESOME THURSDAYS



EVERY THURSDAY FROM 4.30PM GET 2 PINTS OF TAP BEER OR GLASSES OF HOUSE WINE AND ANY PIZZA
ONLY \$33
#threesnotacrowd

Conditions apply

FRIDAY@ CRAFT HAUS



\$10 PINTS any PROPER PINT tap beer
\$10 PIZZAS any house pizza

AFTER WORK SHOUT 2.30PM TO 5.30PM

SLIDER SUNDAYS

EVERY SUNDAY



ONLY \$2 PER SLIDER

Just like a regular burger, but cuter!

DINE-IN ONLY Conditions apply
Book your table phil@crafthauswhanga.co.nz

CRAFT HAUS Gastropub Est. 2022

We're on holiday! RE-OPENING Wednesday, 6th December.
Our staff are having a well deserved break before what is going to be an EPIC summer. We apologise for any inconvenience. Looking forward to seeing you all back soon!

711 Port Rd, Whangamata - @crafthauswhanga - crafthauswhanga.co.nz - 07 865 6300



Richmond Villas

LIFESTYLE VILLAGE

*Living the lifestyle,
loving the choice...*

A Lifestyle Village in Thames on the Coromandel

AVAILABLE NOW:

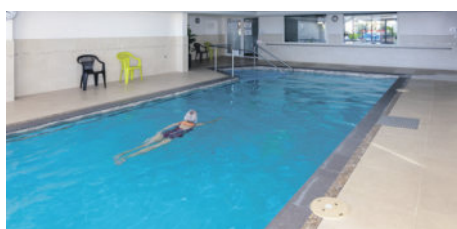
- TWO BEDROOM VILLAS
- ONE BEDROOM APARTMENT ON LEVEL 3
- ONE BEDROOM APARTMENT ON LEVEL 2

ENQUIRE TODAY!

All apartments are within walking distance to Thames' shops, cafes and walkways. The perfect location to enjoy your fun-filled retirement.

Our open plan, single level apartments feature covered balconies with fantastic views of the sea, Kauaeranga River and mountains.

Each unit's elegantly finished kitchen, lounge, bedroom and bathroom offer stylish warmth and light. All residents enjoy scenic views from each level's shared lounges, use of the Village Community lodge and participation in all activities and amenities at your leisure.



Phone us to view by appointment
Come and experience the difference!



82 Richmond Street, Thames
0800 868 5484
www.richmondvillas.co.nz

Giving hearts



Whangamatā News caught up with Whangamatā local Barbara Collett, who has come up with a heartfelt idea at the Whangamata Club.

Barbara tells us she got together with friends Sue Green and Rosalie Bell and the trio have knitted more than 70 hearts so far, for all of us who want to remember our loved ones this Christmas.

The idea has a special twist, because when you purchase a knitted heart (from \$5) all the proceeds will go to the much needed dementia unit at Moana House.

Barbara says "I've worked with so many people in our community, and I thought dementia affects so many." And rightly so, I can't think of a better cause.

Moana House residents will also be able to come and see the tree, enjoy a cuppa and a scone at the Whangamata Club, so for the rest of us, you will see the bucket by the tree at the entrance foyer for donations up to the 20 December.

Choose your heart, enjoy the memories and give to the most needy cause facing Whangamatā.

- Jennie Black

FLOORINGXTRA.CO.NZ

FLOORING TO SUIT YOUR STYLE

CARPET • VINYL • TIMBER • LAMINATE • RUGS

Phone or email us! We're measuring & laying! View samples instore!

WHANGAMATA FLOORING XTRA

Whangamata | 636 Port Road | 07 865 8562 | whangamata@flooringxtra.co.nz

Scholarship awarded

The strong relationship between Eastern Coromandel Community Services Trust and Whangamata Area School has been further strengthened with the establishment of the ECCST Dux Scholarship. The scholarship, valued at \$5000 is provided to assist the Dux in their further pursuit of excellence post school.

Trustees Michelle Crook, Suella Care, and Charmaine Morrissey were on hand to present the inaugural Scholarship to 2023 Dux Madison Matthews. Madison, who is heading to The University of Auckland to study Engineering and Advanced Science in 2024, was both humbled and thankful to be the recipient of this generous award. ECCST

Chair Michelle Crook said "We have spoken with the school about the establishment of a scholarship to reinforce the work we do with youth in the community. When discussing how best to award this, we were interested to hear that there was no specific scholarship for the Dux so it was an excellent opportunity for us to reward a high achieving student".



Madison Matthews (WAS Dux 2023).



From left: Mel and Tony Matthews (Madison's Parents), Suella Care ECCST Trustee), Madison Matthews (WAS Dux 2023), Alistair Luke (WAS Principal), Michelle Crook (ECCST Chair), Charmine Morrissey (ECCST Trustee).

WAS Principal Alistair Luke added "We are proud of and thankful for our partnership with ECCST which includes the provision of counselling and a range of other social services to our student community. This award is further recognition of the generosity of the trust and the many community groups who support our Kura." We wish Madison every success as she heads to Auckland next year.

- Alistair Luke, Principal, Whangamata Area School



Join Us AT THE **WHANGAMATA CLUB**



V.A.C. Award Winners
Playing Hits From The 50's To Now

Toucan

duet better than one!




Whangamata Club
2nd December
6:30pm till Late

SMOOTH & GROOVE

Party Favourites & Classic Hits

TANA TAPRI & WOODY DEAN
Saturday 9th December
6:30pm - till Late
Live at the Whangamata Club

BLAZE

'OLD SKOOL RULES'

Saturday 16th December
6.30pm - Late
Live at The Whangamata Club

OPEN DAILY FROM 11AM

BISTRO
Monday - Friday from 3pm
Saturday & Sunday from 12pm

DINNER MENU
From 5pm daily

RESTAURANT
Friday - Sunday from 5.30pm

404 PORT ROAD
FACEBOOK.COM/THEWHANGACLUB
WWW.WHANGAMATACLUB.CO.NZ
P. 07 865 8705

Hilda celebrates 106 years

"I woke up at five past 12, and I thought... Gosh, I'm 106!" Hilda and her close family invited Whangamatā News to lunch, recently, to celebrate another huge milestone for Hilda Simmons.

Hilda was born in Morrinsville on November 15, 1917. A special day indeed.

Her parents moved to Whangamatā

in 1948, buying a small home, initially, on Ocean Road for just 45 pounds!

Hilda has the best of care living with her son, John, and daughter-in-law, Marie, in Ocean Road, Whangamatā.

John tells us that Hilda's Mum lived to 102 years and her grandmother 100 years, and neither elderly ladies took any medications.



When we asked if Hilda has any hobbies, he tells us that she has always been a great reader, but mostly her children and grandchildren filled her busy days.

Hilda's husband was in the Bomber Command in WWII and lost his hearing through the noise of the aeroplanes and was sent home early, where the pair married. There was no job for him, consequently he joined the forestry north of Whangamatā because he was deaf. It was unlikely he didn't hear 'stand clear!'.

They gave a small unit to Hilda, in Hamilton, and the pair would commute to each other on weekends. Catching the train from Frankton, the Taneatua Express, which dropped you to Waihi and then bus on up to Whangamatā and vice versa the following weekend.

While asking Hilda about her highlights this past year, she says "I don't want to live to 107 years, it's much too old!".

- Jennie Black,
photos by Mark James

WHANGAMATA SPORTS BAR

NEW OWNERSHIP! NEW MENU!

THURSDAY STEAK NIGHT

\$18.5 3:00-9:00PM

200g porterhouse steak, salad & fries, choice of mushroom or pepper sauce

FRIDAY CHICKEN WINGS

3pm-9pm **\$18**

WITH A TAP BEER OR HOUSE WINE

TOSSED IN SPICY KOREAN CHILLI PASTE, HOUSE SLAW

OR

TOSSED IN BBQ SAUCE, HOUSE SLAW

MELBOURNE CUP DAY

Tuesday 7 November

Melbourne Cup

All races live on the big screens

Sweepstakes for sale

SATURDAY PORK RIBS

WHANGAMATĀ SPORTS BAR

Pork Ribs Saturday

3:00-9:00PM

\$20

SUNDAY ROAST

ALL DAY **\$15**

Changes every week, served with roasted veges, yorkshire pudding & pan gravy

100 Casement Road, Whangamata. Phone 865 6915. Restaurant - Gaming - TAB

Golf gladiator remains victorious



19 keen golfers started their shootout competitions and one golfing gladiator remained victorious at the end. Michelle Cotter won the ladies and Tom Horsburgh was the men's champion. The men's competition was very evenly matched such that on the second hole a chip off was needed between 13 players.

It was down to Tom Horsburgh, Peter Millen and Steve Goddard on the second to last hole. Both Tom and Peter laid up before the

river while Steve's tee shot landed greenside. This time a three way putt off was needed. Tom was first to sink a putt, then Peter potted while Steve frustratingly missed all five attempts.

On the final hole, Tom gritted it out after two wayward approach shots to score a five to edge Peter with a six. Congratulations Tom and Michelle. Cheers to Kevin Marr for precise and timely match management.

- Don Mackay. Photo by Shaun Fay

Dress it up for Christmas to WIN!



We will have soopa affordable costumes you can buy at the RSA before the day OR create your own. Be prepared to walk the Santa Stage to show us your Festive Family!



Sunday 10th December

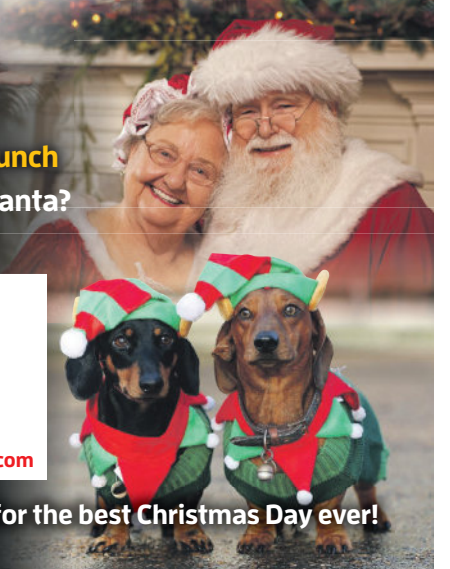
2PM after our RSA Christmas Lunch

Are you our BEST Mrs Claus & Santa? Bring your best ELVES!

WIN GREAT PRIZES!

Best Santa & Mrs Claus, Best Elves, Best Christmas Homemade Cookies, Best Pet Photo submission

email pet entries to: rsamanager@outlook.com



Come with your family to the RSA for the best Christmas Day ever!

Craft Market

12-6PM
SATURDAY 2ND
DECEMBER
SALT DISTRICT BREWERY
101b Winifred Avenue, Whangamata

RSA WHANGAMATA



OPEN 6 DAYS
Tuesdays to Sundays from 11am

Live shows & entertainment
Families welcome!

Anyone can join, come see us today

Whangamata RSA
CHRISTMAS LUNCH
SUNDAY 10TH DECEMBER
11AM

Join us for a delightful Christmas lunch filled with delicious food and festive cheer!

Members \$30
Non Members \$35
Bookings Essential by Wednesday 6th December

NEW YEAR'S EVE
the Harleys
3-piece
Dance Band
COME DANCE & PARTY WITH US!
8PM

NOT A MEMBER YET?
Our RSA is family friendly and encourages all members of your family to be involved. We have a FREE Kids Club and games Cornhole, Quoits and Jenga out for all to use. Our library has a range of kids' & adults' books.

Ying's Thai & European Cuisine
OPEN 6 DAYS: TUE-SUN
LUNCH, DINNER & TAKEAWAYS
Everyone welcome
Lunches daily 11am-3pm
Dinner from 5pm

P. 07 865 9419 @whangamatarsa www.whangamatarsa.com

Windies pre-Christmas crackers

The hugely successful Windies cricket side engraved their name on the Whangamata Twilight cricket trophy again as they won the pre Xmas tournament. Newcomers Pork Chops blasted 131 runs off their 18 overs. Then the composed Windies side hit the winning runs in the final over. Dave "Mr Windies" Webb won the toss, again, and naturally asked Pork Chops to bat. The Pork Chops side is loosely based around a group of golfers and they teed off with 30 runs off the first 3 overs. Michael Wickham, Kane Edwards and Josh Alderton all quality golfers piled the runs on for Pork Chops. The experienced Windies side stuck to their task and somewhat throttled the flow of runs. They significantly took wickets which helped pause



Windies back row, left to right: Jamie Barrance, JJ, Lachlan Ashford, Ryan Rogers, Dave Webb, Brad, Ben de Villiers. Front row, left to right: Ken Stilson, Jamie Carr, Karl Budgen and Marius de Villiers.



the rash of run scoring. The Pork Chops total of 131, just over 7 runs per over was definitely defensible. Despite losing key batsman JJ early on the Windies gradually progressed to the winning total. Brothers Marius and Ben both crunched their ways to unbeaten innings of 30 before compulsorily retiring. Jamie Barrance had a solid individual game with two accurate overs of bowling and a handy batting total. Windies needed only

2 runs off the final over and Brad stroked the second ball classically through the covers of a boundary 4. Special mention for Lachlan Ashford who in his first season of twilight cricket helped Windies to the title. Cheers to umpires Daymo and Nate, Ryan on the scorebook, Susie for refreshments and Greg on the scoreboard.

- Don MacKay,
roving sports reporter

Sports results

RSA 500 CARD CLUB

8 November: An enjoyable day was had by all. The winner on the day was Graeme Allen and Ann Jacob won the raffle. Christine Adams won the chocolate bar.

15 November: An enjoyable day was had by all. The winner on the day was Graeme Allen and Ann Sinclair won the raffle. Yvonne Beveridge won the chocolate bar.

22 November: An enjoyable day was had by all. The winner on the day was Lyn Dorreen and Snow Harris won the raffle. Christine Boston won the chocolate bar.

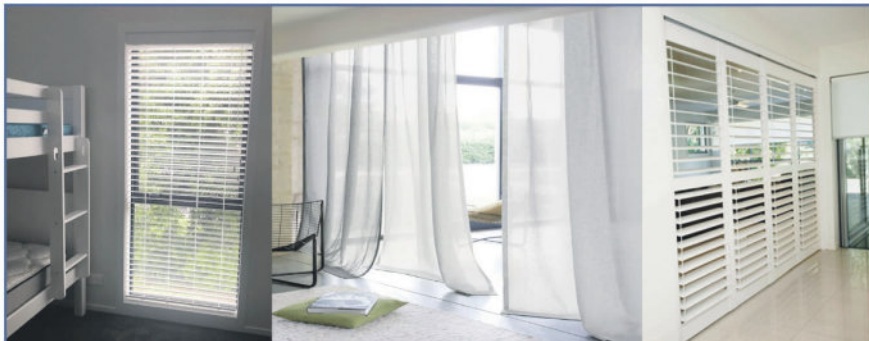
TABLE TENNIS

23 November: played at the Whangamata Club. 16 players attended and some great shots were played. Roger Wolfe was our winner, winning 10 of 11 games, Graeme Smith was 2nd winning 9 games and in 3rd place were Angie Dewhirst, John Wallace and Denise Wallace. As always lots of laughs and fun.

MAH JONG

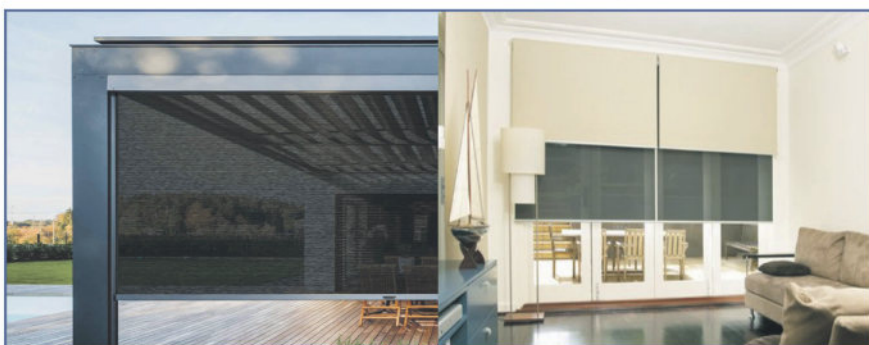
24 November: We had 48 playing the game. Winners were:
1st Margaret Birkett, 39 points
2nd Trish Griffiths, 37 points
3rd Dianne Trembath, 34 points
Lucky Number drawn was 9.
Winner was Rosemarie Rutherford.
Well done everyone. A nice afternoon had by all.

Curtains and Blinds and More



Whangamatā and surrounds for:

- Curtains, Sheers, and Linings | Roman Blinds
- Sun-screen, Light-filter, and Block-out Roller Blinds
- Wood and PVC Venetian Blinds
- Honeycomb Blinds | Shutters | Exterior Roller Blinds
- Motorisation and Automation options



Locally owned and operated providing a complete in-home service from consultation to installation

Contact Louize or Gavin on

027 4777 916

or email info@curtainsandblinds.co.nz
www.curtainsandblinds.co.nz



Money worries weighing you down?

Free help is here, so you can take control of your finances



Eastern Coromandel
COMMUNITY SERVICES
www.communityservices.org.nz

People are struggling with money in all sorts of ways, often it is through no fault of their own.

Our team will help you get back on track towards a life free of debt and a future free from money worries!

FINANCIAL MENTORING SERVICE



Get in touch

We would love to hear from you

☎ 07 865 7065 / 027 470 1714

✉ info@communityservices.org.nz

📍 505 Port Road, Whangamata

🌐 www.communityservices.org.nz

Safety plan vital

The local Whangamatā/Tairua/Pauanui Land Search and Rescue (LSAR) group of 36 members were recently involved in the search for Jordan up the Wentworth Valley and surrounding area in November to support the police in their efforts.

A total of 96 LSAR searchers from all over the Waikato/Coromandel region were involved in the six days they were called upon to find Jordan in rugged and remote terrain.

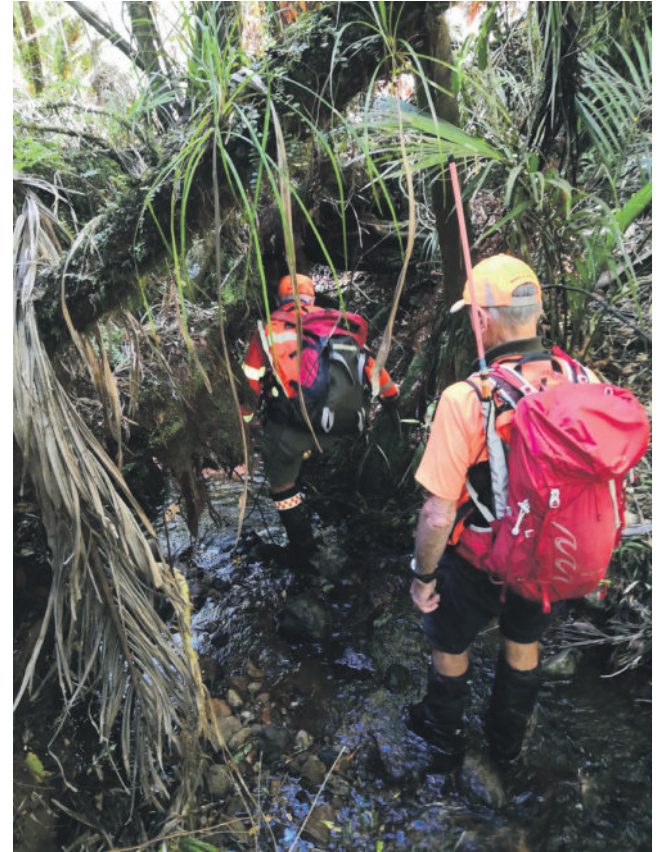
Unfortunately, Jordan was not found during this time but the police are continuing to follow up on any leads.

LSAR would like to stress the following six point safety plan when going for a walk in the bush:

1. Plan your route
2. Tell someone of your planned route
3. Check the weather
4. Take waterproof and warm clothing
5. Take water and food
6. Have a mobile phone or Personal Locator Beacon - especially if going alone



Jordan van Deursen - missing in the Valley since 29 October.



S M O K Y P A L L E T

F R E E H O U S E

Buckets of
Zeffen
for \$35

4 per Bucket
Conditions Apply

PALS BUCKETS \$30
SUMMERS HERE

4 PER BUCKET
*CONDITIONS APPLY

BEER BUCKETS FOR \$25

4 PER BUCKET
*CONDITIONS APPLY

TWO FOR \$30

SUMMER SPRITZ
BLOOD ORANGE, RUBY RED GRAPEFRUIT
SAUVIGNON BLANC GIN

Buckets of
Corona
for \$30

4 Per Bucket
*CONDITIONS APPLY

WHERE TO BE OVER SUMMER!

@Smokypalletwhanga

@Smokypallet

Brazilian Jiu Jitsu team brings home the medals

Whangamatā News caught up with Paul Oswald on the fantastic results with medals for our small Whangamata club.

They recently sent their largest ever team of 25 to the nationals in Auckland to compete against over 800 other fighters from around the country.

Walking away with five national champions and around 15 medallists in total. Impressively they were the only club outside of the massive Auckland franchises to feature in the top 10 of results.

Paul tells us "I was so proud of our team and it was a massive effort by all."

Our local Whangamata Brazilian Jiu Jitsu Club has growing support and trains at our Memorial Hall.

Jeremy Janny, Black Belt, Coach and Owner of the club, is originally from France, but trained from the early age of five years, the art in Brazil.

Operating for the last four years here, the club has students ranging from 5-years-olds to 50 years in the adult classes.

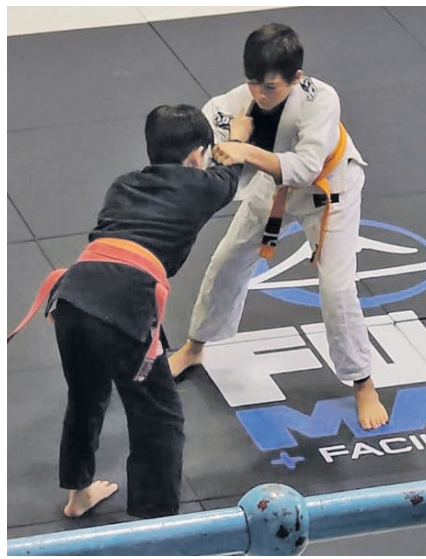
And there's no reason that age ever needs to be a barrier, as the martial art was created to help little Brazilian guys compete with, and defeat, bigger guys. Brazilian Jiu Jitsu is completely non-discriminatory.



Jack in the bullpen before being led to his mat.



Aaron in a dominant position.



Danny about to perform a takedown.

Jeremy tells us "Jiu Jitsu is becoming a leading sport and growing in the world - in America it's huge, Brazil, Europe, it's just picked up in New Zealand after

starting only 10 years ago".

If you're interested in joining, you can come down to see a session or phone Paul on 021 3117 08 or email him at proswald@gmail.com

The Southpacific Motel & Conference Centre



Are you looking for somewhere to entertain your staff for Chrissy, a conference, training day, or family affair?

Nestled in sub-tropical gardens, we have a purpose-built conference facility that can cater to groups of up to 25 people.

The on-site conference centre has wireless internet, data projector and screen, whiteboard and flipchart.

Equipped with tables, chairs, tea & coffee facilities, outdoor bbq area, commercial kitchen & bar area also available for use.

UNDER NEW MANAGEMENT
Call Carly or KB (07) 865-9580
– or better still, pop down to check it out & say giddyay as we are loving meeting locals!



Santa's holiday a delight

Students at Whangamatā Area School have been busy rehearsing for their upcoming Christmas play. Written by year 10 student, Jos Watt, Santa's Holiday is a charming tale of Christmas spirit triumphing over evil.

Santa is feeling old and kids these days are getting so demanding. The naughty list is longer than ever. Santa needs a holiday and what better place than Whangamatā, New Zealand.

Drama and dance teacher Amy Russell is director and choreographer. Over 250 students from new entrants to year 10 are taking part in the production. You can look forward to singing and

dancing along with plenty of laughs.

The whole community are invited to come along and share the magic of the season at the Area School gym.

Whangamatā Lions are providing Christmas trees for the show which will be auctioned off at the end of the final show.

Look out for some of the cast in the Whangamatā Santa Parade on Saturday 2nd December.

Showing: Tuesday 5 December and Wednesday 6 December, 10am at Whangamatā Area School gym. Koha entry.



Some of the students who will be taking part in the show.



Table Talk

Fabulous Festive Food
FOR CHRISTMAS HAS ARRIVED IN STORE!
 Gifts for friends, family or staff!
 Our team are ready to help you to put your order together!
 652 Port Rd - in the heart of Whangamatā
 07 865 7514

Whangamata Craft Beer & Gin Festival

**Sunday 4th February 2024
 from 12:30
 1100 Port Rd, Whangamata
 Te Titoki Reserve Marquee**

Craft beer, gin, cider, cocktails & wine from Coromandel, Waikato, Auckland, Geraldine, Rotorua & Marlborough

STRICTLY 18+ EVENT

Tickets on sale NOW!
 \$40 general access tickets available from AATicketing.com

Dance the afternoon away with music by Tim Armstrong and his band

Brought to you by the Whangamata Ocean Sports Club

Captivating colours at the Whangamata Garden Club

Despite the recent terrible weather, Tuesday 21st November 2023 saw a display of beautiful roses competing in the annual Rose Show and the "spud in a bucket" growing competition.

Rose show winners were:

Miniature

- 1st Jacqui Clarke
- 2nd Carol Archer
- 3rd Chris Emmerson

Decorative

- 1st Jacqui Clarke
- 2nd Marilyn Fowlie
- 3rd Marilyn Fowlie

Exhibition

- 1st Chris Emmerson
- 2nd Marilyn Fowlie
- 3rd Doreen Spain

Full Bloom

- 1st Carol Archer
- 2nd Jacqui Clarke
- 3rd Carol Archer

Floribunda

- 1st Marilyn Fowlie
- 2nd Marilyn Fowlie
- 3rd Sylvia Manning

Vase of Roses

- 1st Marilyn Fowlie
- 2nd Carol Archer
- 3rd Jacqui Clarke

Mini Medium

- 1st Dianne Trembath
- 2nd Carol Archer
- 3rd Doreen Spain

Carol Archer emerged the winner of Best in Show.



Chris Emmerson in her winning hat.

Adding to the mood of the day, many club members paraded their Spring Fling hats with Chris Emmerson taking the prize for the

day and Jude Eades runner-up Dianna Eastwood claimed the prize for her spuds weighing in at 1.624kg and Sylvia Manning winning the single weight with her 188g.

All in all a day enjoyed by members. However, the club is not just competitions. There are many enjoyable social activities throughout the year including an annual 5-day trip to beautiful gardens at different locations every year and always a highlight is High tea at the home of Jude and Geoff Eades.

New members are welcome. Come along to the Baptist Hall on the third Tuesday of every month from 11.00am and see for yourselves. Happy Christmas gardeners.

- Jan Collins



Carol Archer's winning rose.



Carol Archer being presented with the Best in Show trophy.



Some of the roses in the Rose Show.

Eastern Coromandel Community Services

Christmas Appeal

Every year we do our best to make Christmas special for families in our community.

Your support would be greatly appreciated at this time.

Ways to help:

- **Gifts for ages 0 - 18 (new and unwrapped)**
- **Cash Donations**
- **Local Vouchers**
- **Gift wrap**
- **Food donations**

Let's make this Christmas special for our local tamariki in need!

We encourage shopping locally and as sustainable as possible

Drop off at our office 505 Port Road



www.communityservices.org.nz



President Kay Baker enjoying the wonderful High Tea at the home of Jude Eades.



Jude Eades, runner-up in Spring fling hat.

Poet's Corner

Show Time

Gossip had elevated her enthusiasm as she purchased their tickets
 Eftpos card in hand anticipation in her mind
 Exclusion from last years performance housebound and ill
 Was now not such a bitter pill to swallow
 The old ticket a reminder placed carefully on the sill

Get there early her friend suggested we will secure a handy park
 And avoid the congestion when departing in the dark

Interval arrived as she took a breath and then another
 Her friend was smiling
 "The show is so amazing I can't wait to return
 Let's have a glass of bubbles and perhaps a tasty snack
 We have to watch the time now
 Can't miss any of the sell out second act"

- Graeme Smith

SH25A to reopen before Christmas

Waka Kotahi NZ Transport Agency has announced that SH25A (Kōpū-Hikuai Road) will reopen by 20 December.

The new SH25A bridge is another step closer to completion with the pre-cast concrete side barriers now in place and further work to connect the bridge deck to solid ground at the abutments completed.

Last week the team lifted and placed 44 barriers along each side of the bridge deck. At the eastern abutment, the team poured the concrete for the expansion joint and knock off block.

Soil nailing of the slip face above the bridge continues with night work as well to speed up progress. Drainage installation under the bridge and at the western abutment is underway.



The team also completed the pavement layers for the new road at the eastern approach. These are the crushed rock layers that will be sealed with a layer of asphalt.

This week the team will set up the reinforcement and do the concrete pours, which connect the barriers to the bridge deck and form and pour the expansion joint and knock off block at the western abutment. They will also start reinstatement of the road at the western approach.

Asphalt, road marking and barriers will be completed over the next few weeks ahead of the bridge opening, expected by 20 December.

Our Council is working with Waka Kotahi, stakeholders and the community about how we celebrate this milestone.

Share to Prepare - inquiry into North Island weather event response

The Government has opened consultation for their inquiry into the response to this year's North Island severe water events. They want to hear stories from people who experienced the storms and their impacts, to better prepare for future events.

The consultation closes on Friday, 15 December.

The severe weather events in Northland, Auckland, Waikato, Tairāwhiti, Hawke's Bay, Bay of Plenty and Taranaki earlier this year were unprecedented. They caused loss and trauma to people, households and communities, and billions of dollars of damage.

We can expect more of these events. So, as a country, we need to prepare. The most powerful way we can do that is to hear from people like you; people who experienced the events, or have something to share.

The terms of reference for this Government Inquiry are available on the New Zealand Gazette website gazette.co.nz in the article: Establishment of the Government Inquiry Into the Response to the North Island Severe Weather Events.

Ratepayers seeking meaningful consultation

Chairpersons of ratepayer and resident groups from Tairua, Pauanui, Onemana and Whangamata recently met for talks with Mayor Len Salt and Deputy Mayor Terry Walker in the Pauanui Hub.

Several items were on the agenda.

- Pre-election change was "promised", ratepayers and residents are seeking change, meaningful, consultation, transparency, and accountability, the recent Whangamata Ratepayers Association Survey confirmed this.
- Significance and Engagement, the recent proposed changes to policy and submission procedures had caused concern through timing, purpose, and intention.
- Long Term Plan process, there was serious concern over ongoing annual 10% plus rate increases. Communities want to see a detailed breakdown of proposed rates for their area.
- Submission process for policy, plans etc, it requires considerable effort to make submissions that appeared to be a box-ticking exercise only and were seen by many as effectively meaningless.

Len reported of proposed changes



which should be noticed in 6 months, with LTP OPEX change starting to come through.

Addressing rate rises, Len used proposed essential large infrastructure projects as examples of major cost increases, in addition the cost of compliance is one of the high-cost items, as well as uncertainty over Three Waters.

The mayor spoke proudly of the of the achievement by all concerned to open SH25a pre-Christmas and the additional \$30million of funding sourced to upgrade the existing road whilst closed the slip was being repaired.

To improve resilience, Council was working on additional roading

packages to address one lane bridges and the need to extend to two lanes.

Len advised other income streams were being investigated, pointing out the amount of money collected by central government and the steady increase, as against the fixed rateable income by council, options to remedy this include government pays rates on properties they own, and return GST collected back to those communities.

- The role of Community Boards was a hot topic, those present felt Community Boards were ineffective as a result of bureaucracy.
- Community Boards need to be

fully involved, through networking and drop-in days, have agenda input at Community Board meetings over local issues, council staff should when given adequate time to prepare and be required to answer questions from Community Boards.

- Role of Area Manager's having some of their previous responsibilities restored, for example management of local maintenance and service programmes.
- Councils Request for Service system (RFS) was discussed, it was agreed work needed to be done on this to improve response times and outcomes.
- Traffic Management was raised, seen by locals as a massive waste of resource, Len commented that this was being addressed at national level.

There was general agreement that these meetings should continue in 2024 to allow for frank and open discussion to improve consultation and collaboration, ideally in Council Chambers with the chairpersons of local ratepayer associations and chairpersons of each Community Boards in attendance.



Whangamata
SERVICE CENTRE



Auto
SUPER SHOPPES
NZ'S PREMIUM AUTOMOTIVE CENTRES

Full Mechanical Repairs, Lubrications and Services, WOFs, Tyres, Tune ups, Batteries, Wheel alignments, Diagnostics.

Scan Tool.

AA Breakdown services

First Assistance Breakdown services




P. 07 865 9435 • 201 Aickin Road, Whangamata

M. 027 608 5770 • E. wgmssc@extra.co.nz



fairview
EXCEPTIONAL WINDOWS & DOORS

WHANGAMATA
07 865 8919
www.fairviewwhangamata.nz

Messy Christmas – pure delight!



Whangamatā News went along last Saturday to see lots of angels, young and old get creative with lots of arty projects, smiles and laughter from all ages.

Christmas crafts, song, story and prayer was just what we needed.

Thank you Vicar Rosie Dell, bringing more joy to our community.

- Photos Mark James



CARAVAN FOR SALE Jayco 28 Foot 2002

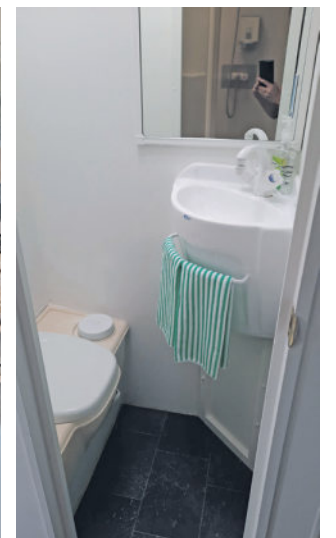


**Need room for family this summer?
Holiday workers need accommodation?**

AFFORDABLE TINY HOME!

Totally renovated, new carpet, vinyls, repainted interior, shower, toilet, double bed, oven, microwave, it really is chic! All the extras!

WAS \$65,000 NOW \$50,000! Contact 0272 108 190.



Golfers swing in from everywhere

The inaugural Paradise Coast Golf Classic has attracted golfers from all over the upper north and will have a full field starting on 1 December.

The Coromandel is a popular spot for club golfers and the summer can get busy. Why has this tournament created such interest? The three courses chosen are quite different, the expansive Pauanui Resort, the bush rawness of Tairua and of course the stunning visual that is Titoki, Whangamatā. It's a couple friendly tournament with many teaming up also to play with friends. Finally, several of the players own or have friends with a bach in the area and getting to and from each course isn't too hard.

The Paradise Coast Golf Classic is an initiative of Enterprise Whangamata (EW), the local business association. It's hoped the tournament will become established on the golfing calendar. "It's been a steep learning curve for all of us..." said Patrick Kerr, chair of EW "... however, the co-operation of all three towns in our South East Ward has been inspiring. We can't wait till tee off".

The Paradise Coast Golf Classic:
Friday, 1 December and Saturday,
2 December at Tairua and Pauanui
Resort. Sunday, 3 December - finals
day at Whangamatā. Spectators
welcome.

- Shaun Fay
www.whangamata.org.nz





Beat the Christmas rush!

www.challenge.net.nz Cnr Port Rd & Ocean Rd, Whangamata

Whangamata's largest range of tyres and batteries in stock

We stock a massive range of batteries, Automotive, Commercial, Marine, Jet Ski & Motorcycle

<p>Kumho K133 Scoop purchase! 225/55/19\$249.90 each including GST</p> <p>Kumho TA21</p> <table border="0"> <tr><td>175/65/14.....</td><td>\$139.90</td></tr> <tr><td>185/65/15.....</td><td>\$159.90</td></tr> <tr><td>195/60/15.....</td><td>\$164.90</td></tr> <tr><td>195/65/15.....</td><td>\$164.90</td></tr> <tr><td>205/60/16.....</td><td>\$189.90</td></tr> <tr><td>215/50/17.....</td><td>\$189.90</td></tr> <tr><td>215/55/17.....</td><td>\$189.90</td></tr> <tr><td>225/50/17.....</td><td>\$209.90</td></tr> </table>	175/65/14.....	\$139.90	185/65/15.....	\$159.90	195/60/15.....	\$164.90	195/65/15.....	\$164.90	205/60/16.....	\$189.90	215/50/17.....	\$189.90	215/55/17.....	\$189.90	225/50/17.....	\$209.90		<p>Goodride RP28 (Budget Tyres)</p> <table border="0"> <tr><td>175/70/13.....</td><td>\$99</td></tr> <tr><td>175/65/14.....</td><td>\$109</td></tr> <tr><td>175/65/15.....</td><td>\$119</td></tr> <tr><td>185/60/15.....</td><td>\$129.90</td></tr> <tr><td>185/65/15.....</td><td>\$129.90</td></tr> <tr><td>195/65/15.....</td><td>\$129.90</td></tr> </table> <p>4WD Specials - Terramax AT</p> <table border="0"> <tr><td>265/60/18.....</td><td>\$249.90</td></tr> <tr><td>265/50/20.....</td><td>\$249.90</td></tr> </table>	175/70/13.....	\$99	175/65/14.....	\$109	175/65/15.....	\$119	185/60/15.....	\$129.90	185/65/15.....	\$129.90	195/65/15.....	\$129.90	265/60/18.....	\$249.90	265/50/20.....	\$249.90
175/65/14.....	\$139.90																																	
185/65/15.....	\$159.90																																	
195/60/15.....	\$164.90																																	
195/65/15.....	\$164.90																																	
205/60/16.....	\$189.90																																	
215/50/17.....	\$189.90																																	
215/55/17.....	\$189.90																																	
225/50/17.....	\$209.90																																	
175/70/13.....	\$99																																	
175/65/14.....	\$109																																	
175/65/15.....	\$119																																	
185/60/15.....	\$129.90																																	
185/65/15.....	\$129.90																																	
195/65/15.....	\$129.90																																	
265/60/18.....	\$249.90																																	
265/50/20.....	\$249.90																																	



RP28 Benefits and Features

- A comfortable ride premium touring tyre
- Computer aided designed tread offering low noise and excellent water drainage
- SILICA TECH compounding technology ensuring low rolling resistance and saving fuel expenditure
- Improved shoulder sipes providing better handling during cornering

PHONE SIMON 07 865 7698



Car tyres / Wheel alignment
 4WD tyres / Tyre repair
 Wheel balance / Small implement tyres
 Batteries - car & marine



MD Design Ltd – Architectural Design

Additions. Alterations. New Builds.

For a free no obligation chat on your next project contact Mark Butler

M: 027 478 6606 E: mddldesign@gmail.com
[facebook.com/mddldesign](https://www.facebook.com/mddldesign)






For a free no obligation discussion contact Lynn 021 123 5650

Google search Fusion Landscape Design or visit fusionlandscapedesign@houzz.co.nz to view examples of previous work, discover more about Lynn, her company and read client comments.





Your local and the only Registered Master Landscaper based on the Coromandel Peninsula



**Whangamata
Real Estate**

LICENSED REAA 2008

Don't just dream it, live it

FOODBANK

WHANGAMATA - ONEMANA - OPOUTERE

SATURDAY 2ND DEC 10AM-12PM

This is a special gate to gate collection to help stock Whangamata's foodbank prior to Christmas. Our team will be collecting around all the streets with the help of the Fire Brigade, St Johns, Police and Surf Club.

Any non-perishable items will be gratefully received. You can also drop any items into our Ocean Road office.



HELP OUR LOCAL FAMILIES HAVE A SPECIAL CHRISTMAS

Whangamata Christmas Parade & Fair

JOIN US FOR AN AFTERNOON OF FESTIVITIES
LIVE MUSIC | FOOD STALLS | MARKETS | GAMES

WANT TO HAVE A
STALL AT THE FAIR?

CONTACT US ON
078658499
FOR MORE INFO

**FREE
ENTRY**

2ND DEC 2023 | 3PM - 6PM

**PARADE STARTS AT 3PM PORT ROAD
FAIR AT WILLIAMSON PARK 3:30PM - 6PM**

PARADE PRIZEGIVING AT 4:30PM





07 865 8499 328 Ocean Road, Whangamata whangamatarealestate.co.nz

13 Titoki Lane

- Spacious easy living single level home
- Excellent indoor/outdoor flow for alfresco dining
- Direct access to 18 hole golf course
- 4 double bedrooms, main with ensuite and walk-in robe
- Well-appointed kitchen with scullery.
- Positioned well for the sun
- Easy care landscaped grounds
- Double garaging plus high stud carport for motor home /boat

View by appointment



Colin Thompson
021 723 723
View Listing: whanga.co/8273



107 Winifred Avenue

- Buy location first & maybe redevelop later.
- Easy care design property
- Level site. Zoned extra density.
- Easy stroll to the beach, cafes & shops from here

Visit websites for viewing times



Dave Anderson 021 790 488
Renee Jacobsen 021 250 8541
View Listing: whanga.co/8270



8 Mako Avenue, Whiritoa

- Presented in as new condition
- 3 bedrooms, full bathroom plus an extra separate toilet
- Sunny living area opening onto a large deck through bifold doors
- Built in 2011, double glazed joinery, fully insulated, woodfire
- Garage, carport, and garden shed, fully fenced & gated
- Easy walk to beach & surf club

Visit websites for viewing times



Dave Anderson 021 790 488
Renee Jacobsen 021 250 8541
View Listing: whanga.co/8272



108 Tuna Place, Onemana

- Very well presented three double bedroom home close to the beach
- Generous open plan lounge/dining opens onto spacious decks
- Modern spacious kitchen
- Bathroom with under floor heating, separate toilet
- Easy stroll to the local cafe/dairy, beach reserve, and beach
- Sited on a full freehold 822sqm bordering reserve

View by appointment



Julian West
027 222 4364
View Listing: whanga.co/8266



CLASSIFIEDS

DEATH NOTICES

SWANN, David William Malcolm (Reverend)

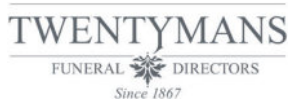
Peacefully at Thames Hospital, on 18th November, 2023; aged 92 years. Dearly loved husband of the late Avis. Much loved Dad of Elizabeth (deceased), and Andrew. An adored Granddad of Ella, Sarah, and Juliet, Conran and Oliver.

In accordance with David's wishes a private cremation has taken place.

A Memorial Service for David will take place at a later date.

Messages to:

TWENTYMANS



SITUATIONS VACANT

SOUTH PACIFIC MOTEL & CONFERENCE CENTRE

We are looking for a casual cleaner, hours, days will vary to assist us.

Phone Carly (021) 634 677

SITUATIONS VACANT

Moana House & Village Whangamata

Kitchen Assistants required

We are looking for two people to job share a new role helping in the kitchen. 9:00 am to 1:00 pm seven days a week but on rostered shifts.

If you have a positive attitude towards the older person and would like to be an effective team member, please forward your CV to office@moanahouse.nz or ring and speak to Pippa (07) 865-9643.

URGENTLY REQUIRED Part-time caregiver

Part-time caregiver needed in Whangamata to assist with personal care for lovely lady in her 70's.

Good hourly rate offered, training provided.

Phone Margaret on 865 6804.

Whangamatā Tides 2023

DECEMBER 2023		☾ New Moon: 13 th			☀ Full Moon: 27 th						
Date	High tide	Height (m)	High tide	Height (m)	Low tide	Height (m)	Low tide	Height (m)	Sun rise	Sun set	
	AM		PM		PM		PM				
1	Fri	10:44	1.9	22:58	1.7	4:18	0.2	16:51	0.4	05:48	20:21
2	Sat	11:28	1.8	23:42	1.7	5:01	0.3	17:37	0.4	05:47	20:22
3	Sun			12:12	1.8	5:43	0.3	18:23	0.5	05:47	20:23
4	Mon	0:27	1.6	12:56	1.7	6:27	0.4	19:08	0.5	05:47	20:24
5	Tue	1:13	1.6	13:41	1.7	7:12	0.5	19:54	0.5	05:47	20:25
6	Wed	2:01	1.5	14:27	1.7	7:59	0.5	20:41	0.5	05:47	20:26
7	Thu	2:52	1.5	15:14	1.6	8:49	0.6	21:30	0.5	05:47	20:27
8	Fri	3:46	1.5	16:02	1.6	9:42	0.6	22:20	0.5	05:47	20:27
9	Sat	4:41	1.5	16:52	1.6	10:36	0.6	23:10	0.5	05:47	20:28
10	Sun	5:35	1.6	17:41	1.7	11:29	0.6	0:01	0.4	05:47	20:29
11	Mon	6:27	1.7	18:31	1.7			12:21	0.5	05:47	20:30
12	Tue	7:16	1.7	19:21	1.7	0:48	0.4	13:12	0.5	05:47	20:31
13	Wed	8:05	1.8	20:11	1.8	1:36	0.3	14:02	0.4	05:47	20:31
14	Thu	8:52	1.9	21:01	1.8	2:24	0.2	14:52	0.4	05:47	20:32
15	Fri	9:40	1.9	21:51	1.8	3:11	0.2	15:42	0.3	05:48	20:33
16	Sat	10:28	1.9	22:41	1.8	3:59	0.2	16:32	0.3	05:48	20:33
17	Sun	11:18	2.0	23:33	1.8	4:47	0.2	17:24	0.3	05:48	20:34
18	Mon			12:09	2.0	5:37	0.2	18:16	0.3	05:49	20:35
19	Tue	0:27	1.8	13:01	1.9	6:30	0.2	19:10	0.3	05:49	20:35
20	Wed	1:22	1.8	13:55	1.9	7:25	0.3	20:05	0.3	05:49	20:36
21	Thu	2:21	1.8	14:50	1.9	8:22	0.3	21:02	0.3	05:50	20:36
22	Fri	3:22	1.7	15:47	1.8	9:23	0.4	21:59	0.3	05:50	20:37
23	Sat	4:24	1.7	16:43	1.8	10:24	0.4	22:57	0.3	05:51	20:37
24	Sun	5:25	1.8	17:40	1.8	11:24	0.4	23:54	0.3	05:51	20:38
25	Mon	6:22	1.8	18:35	1.8			12:22	0.4	05:52	20:38
26	Tue	7:16	1.8	19:27	1.8	0:47	0.3	13:17	0.4	05:53	20:39

Only the BEST TRADIES will do!

GYM

**OPEN 24 HOURS
7 DAYS**

Casuals Welcome
Group Fitness Classes
Super Affordable

104 Lindsay Road (opposite skate park)
Phone 07 865 6502 **FREE Wi-Fi**

EARTHWORKS

- Bobcat & excavator
- Tight access work
- Site works
- Topsoiling
- Driveways
- Hole drilling
- Concrete prep
- Cartage

Shay 021 742 966 | www.blackhillearthworks.co.nz
info@blackhillearthworks.co.nz

IT SUPPORT

FIBRE INTERNET
now available to order from Boot I.T.

We are the Coromandel's only local Fibre Internet Provider, and the ONLY provider that offers 7 days per week support.

Call us on 0800 242 266 to find out more.

PAINTER

Gavin Johnson
PAINTER & DECORATOR

Interior/Exterior Painting
Wallpapering
Cedar Cleaning and Restoration Service

0224 552 363
brushstrokeswhangamata@gmail.com

HIRE / SUPPLIES

Bubba's
Outdoors & Hire

321 Casement Rd, Whangamata
OPEN 7 DAYS

- LPG Refills • Ice • Bait • Rods • Reels
- Tackle • Chandlery • General Hire

P. 07 865 7464

LANDSCAPING

Beach Contractors
Landscape Supplies

LANDSCAPING SUPPLIES:

Bark, mulch, compost and topsoil	Sand, lime chip, river stones and pebbles	Cement, builder's mix and a range of metals
----------------------------------	---	---

Delivery service available

Whangamata Yard
2546 Waihi Whangamata Rd
M. 027 261 1262

Waihi Beach Yard
691 Waihi Beach Rd
P. 07 863 5340

Only the BEST TRADIES will do! Use Locals... For Locals... Support Locals!

CONCRETE

BROWNMORE CONSTRUCTION
CONCRETE CONTRACTORS

Any Concrete Requirements: Slabs, driveways, patios, paths, etc
All types of concrete - colour - finish
Council Permits for Vehicle Crossings
Excavation to finished product • Saw cutting & drilling

We take pride in doing a quality job at a competitive rate

REX: 027 285 5489
P. 07 863 3364 • office@brownmoreconstruction.co.nz
www.brownmoreconstruction.co.nz

FENCING

RURAL FENCING • RESIDENTIAL FENCING
POST AND RAIL • RETAINING WALLS
POLE SHED BUILDINGS
ORCHARD BUILDS & MAINTENANCE

coastline FENCING LTD

BLAIN TEMPELMEYER 027 784 6538
coastlinefencing7@gmail.com

PAINTER

Coastline Property Painters



Protecting your investment ■ Interior ■ Exterior ■ Roofs ■ Communication is everything ■ Updates & photos as your job progresses

Call Richard Upton: 0274 884 881 / www.coastlinepropertypainters.com

DOG WASH

CoroVets NEW TO WHANGAMATĀ!
DOG WASH SYSTEM IS HERE



Shampoo, flea shampoo, condition, rinse & blow dry
\$10 coins for 10 mins
\$11 eftpos for 11 mins
or come on in and get tokens

215 Aickin Rd, outside the building frontage – 7 DAYS

BUILDING WASHING

COROWASH
www.corowash.co.nz

COROMANDEL HOUSE & BUILDING WASHING
No Mould, No Salt Pure Satisfaction

info@corowash.co.nz
0223991130
Bronson Phillips

CURTAINS / BLINDS

Specialising in:

- Curtains
- Roman Blinds
- Cushions
- Duvet Covers
- Roller Blinds
- Shutters

croft design

306 CASEMENT ROAD, WHANGAMATA
M. 0274 481 957 | E. beth@croftdesign.co.nz

CURTAINS / BLINDS

Curtains and Blinds Whangamatā
LOCALLY OWNED AND OPERATED

- Curtains
- Roman Blinds
- Roller Blinds
- Venetian Blinds
- Slats
- Shutters

100% Mobile Service
We come to you
Free Measure and Quote

Call us on 027 4777 916
info@curtainsandblinds.co.nz

BARBER

Cuts by Sami
FOR ALL YOUR BARBER NEEDS

07 865 8582 604 Port Rd, Whangamata

cutsbysaminz@gmail.com
cuts by Sami cuts_by_sami

PAINTER

Gerards Painting Services

Small jobs are my specialty!

PHONE: 021 108 5996



ELECTRICIAN

GREG HENSTOCK ELECTRICIAN LTD
Registered Electrician
One Man Band
WHANGAMATA
0272 580 366



HANDYMAN

HANDYMAN

30 yrs experience, specialising in:

- Bathroom, deck & building repairs
- Gib fixing & plastering
- Interior /exterior painting

Please ring Rex on 021 997 428

LOCKSMITH

Homesafe Locksmiths & Services

ONE key to fit ALL doors!
FREE advice on your lock requirements

Ian McAuley (Macca) Owner/Operator
• 126A Tamaki Rd, Whangamata
• P 021 719 495 or 07 865 7092 • E imacca2003@yahoo.co.nz



BUILDING WASHING

HOUSE WASHING

Exterior house or commercial building wash, roof wash, fences, driveway, patios – soft-wash for best moss and lichen clean and treatment, exterior window cleaning, or general water blasting, 100m of hose so access is no problem

Prompt local service with 20 years' experience

Ph 0800 747 787 email atlasgroup@xtra.co.nz
or dial Anton direct on 027 313 4386

CLEANING

jae we'll take care of it

- Carpet Cleaning
- Pest Control
- Flood & Fire Restoration
- Stain Removal
- Upholstery Cleaning

07 863 8358 or 0800 225 552
whangamata@jae.co.nz



50 YEARS

ADVERTISING

Whangamatā NEWS

By Locals, For Locals,
About Locals! Home delivered.
Call Jennie 021 0232 1661.



Use Only the Best Services in our Community! Use Locals... For Locals... Support Locals!

AUTOMOTIVE & BOATS



BOAT TRAILERS, CARS, CLASSIC & HOT RODS

ONLY Repco STOCKIST IN TOWN! **ONLY HONDA AGENT IN TOWN!**

Aickin Road, Whangamata (next to Bunnings)
P. 865 9073 | E. office@jcdcustoms.co.nz
Mon-Fri from 8am

TRAVEL AGENT

**KAY GREGAN
THE TRAVEL
DESIGNER LTD**

Award Winning TAAZ Bonded Approved
Travel Broker &
CLIA Accredited Cruise Specialist

For all your travel needs
Kay.Gregan@thetravelbrokers.co.nz
64 7 865 9568 or 64 27 337 6222
thetravelbrokers.co.nz/kaygregan



ELECTRICAL



**Electrical
Laser**

"Totally Dependable"

AVAILABLE 24/7

Residential | Commercial | Heat Pumps
Fire Systems

P. 865 9309 | whangamata@laserelectrical.co.nz
NEW LOCATION: 100 Lindsay Road

KITCHEN



**WHANGAMATA
WOODWORKS**

Specialists in design, manufacture & installation
of kitchens, wardrobes & custom cabinetry

108 Lindsay Rd, Whangamata P. 865 7947 whangamatawoodworks.com

**MASTERCRAFT
KITCHENS**

BUTCHER

MEAT AT THE BEACH

Taking Christmas Ham Orders NOW!
Home Kill Orders finish at the end of October - Be Quick!
Also taking orders for Lamb, Turkey, Duck and Pork roasts.

601 PORT ROAD, WHANGAMATA P. 07 865 7241
MON-FRI 8.30AM-5PM - SAT 8.30AM-3PM

BUILDER

MJC BUILDERS
Building with pride

- FENCING
- DECKS
- PERGOLAS
- ROOFING
- ALTERATIONS
- BUILDING REPAIRS
- CONCRETE DRIVEWAYS
- FULL LANDSCAPING



MIKE CUNNINGHAM M. 021 0677 555
E. mjc.builder.whangamata@gmail.com

TREE SPECIALIST



**Nicholson
Tree Services**

QUALIFIED ARBORIST

30 years experience in all aspects of tree work

- Pruning
- Hedge trimming
- Debris chipped
- Felling
- Confined space
- Free quotes
- Storm damage dismantling and more

Professional and reliable service - fully insured

Phone Greg Nicholson on 07 865 6769 or 021 133 0937
email: nicholsontreeservices@hotmail.com

PARTY EQUIPMENT

Table & Chairs Tableware
Marquee & Gazebo's Kitchenware
Lighting Cooking Equipment
Bar Equipment Audio & Machines

Whangamata
Party Hire

Lovie 021 297 0293 / Lofty 021 364 7893
info@whangamatapartyhire.co.nz
www.whangamatapartyhire.co.nz

PODIATRY

Pedicare Services
Professional Foot Care

Alison Walkington
Registered Nurse

Home visits by
appointment




**Mobile 027 663 2320 or
email alison.c.walkington@gmail.com**

PHOTOGRAPHER

Pete Stretch
PHOTOGRAPHY

Family Events Weddings



027-458-1179 peterstretchphotography@gmail.com

POOL & SPA SERVICES



Pool Queen LTD

MOBILE POOL & SPA CLEANING SERVICES

Sharleena Tucker ~ poolqueen@outlook.co.nz
027 316 3384
Coromandel Peninsula

WINDOW CLEANING



Pure n Clean

Your ecofriendly window cleaning service.

Mike Horton M 021 501 324
info@purenclean.co.nz www.purenclean.co.nz

HEAT PUMPS



Reef REFRIGERATION & AIR CONDITIONING LTD

We Sell and Service all Major Brands

Your heat pump specialist
On site marine & commercial refrigeration

Call today for a hassle-free quote
027 933 8599
www.reefrefrigeration.co.nz

BUILDER



SKF

**RESIDENTIAL
SERVICES**

Qualified Builder / LBP

07 865 6555 skfrs@xtra.co.nz

PLUMBER

Russell CHOAT
GAS & Plumbing
Whangamata

**FOR ALL YOUR GAS-FITTING, PLUMBING,
DRAINAGE & ROOFING REQUIREMENTS**

Registered craftsman & member
of Master Plumbers

M. 0274 714 869 E. CHOATS@XTRA.CO.NZ

Only the BEST TRADIES will do! Use Locals... For Locals... Support Locals!

ELECTRICIAN / DOG GROOMER



Rusty Sparks
EVERYTHING ELECTRICAL
Residential, Commercial, Data, Alarms
021 800 017
admin@rustysparks.nz



PIMPED PUPS GROOM ROOM
021 850 017
WHANGAMATA

BINS

Skip Bins, Wheelie Bins, Front Load Bins

Contact us today! *We can help!*



smart environmental
0800 4 MY BIN - www.smartbins.co.nz
Proudly 100% Kiwi owned

BOARDING KENNEL / CATTERY



SPOT X BOARDING KENNELS AND CATTERY

Quality care and facilities in a rural setting
Office hours: 9am-12 noon and 3-5pm daily
INSPECTION WELCOME
Ph 07 865 8242 or 027 624 3890
Annette Gillatt
4km south of Whangamata on the main road

REFRIGERATION & AIR CON

TIDELINE REFRIGERATION
WHANGAMATA

- * HEAT PUMPS
- * REFRIGERATION
- * AIR CONDITIONING
- * VENTILATION

SERVICING IN THE COROMANDEL AREA
0272121994 - 0277251820
TIDELINEREFRIGERATION@GMAIL.COM
WWW.TIDELINEREFRIGERATION.COM

TREE SPECIALIST



- Tree felling & pruning
- Hedge trimming
- Stump grinding
- Fully insured
- Qualified arborist

TREECARE WHANGAMATA LTD
Contact Ben 021 827 355
treecarewhangamata@gmail.com

ARBORIST



- Professional experienced and insured arborist
- All tree work including removal / pruning
- Hedge trimming and property maintenance
- Quality firewood and smoker wood

Heath van Leeuwen 0210 838 9922
email Heathsvan@gmail.com

WARDROBES

WAIKATO WARDROBES

Nadine & Duncan Waterson - Servicing the Coromandel

- Custom Wardrobe Systems
- Sliding Doors
- Entertainment and Study Units
- Home Storage-Garage / Laundry

07 850 9959 / 027 4793 750 / waikatowardrobes.co.nz
info@waikatowardrobes.co.nz

WARDROBES

WD WARDROBES DIRECT

Steve Parkinson
Central, East & South
021 0733 100
steve.parkinson@xtra.co.nz

ALSO SERVICING WHANGAMATA
www.wardrobesdirect.co.nz

Showroom Unit 2, 63 Morrin Rd St John's Auckland

LAUNDRY

WHANGA LAUNDROMAT



The only locally owned & operated laundromat in town!
OPEN 24 HOURS - 7 DAYS A WEEK
CASEMENT RD, WHANGAMATA (OPPOSITE WAITOMO FUEL)

SCAFFOLDING



- Mobile scaffolding
- Roof edge protection
- Construction scaffold

Servicing Whangamata and surrounding areas

Please ring 022 076 0160 or email whangamatascaffolding@gmail.com
102 Lindsay Road, Whangamata Est 2014

TYRE & BATTERY SERVICES

WHANGAMATA TYRE & BATTERY



KUMHO TYRES 7

Car tyres / Wheel alignment
4WD tyres / Tyre repair
Wheel balance
Small implement tyres
Batteries - car & marine

Phone Simon 865 7698

CHALLENGE Cnr Port & Ocean Rd, Whangamata
www.challenge.net.nz

WINDOW & DOOR SERVICES

WHANGAMATA WINDOW & DOOR SERVICES

Bryce Hall
M. 027 282 2057
Ph. 865 9714

Reglaze // Repairs // Maintenance
Retro Fit Double Glaze

whangamatawindowdoorservices@xtra.co.nz

UPHOLSTERY

WINDWOVEN UPHOLSTERY



For all your upholstery needs
• Home • Office • Boat • Caravan
Available 6 days for your convenience
Free quotes

07 865 8774
021 066 5788

HOME SERVICES

YourLocal
NZ's Trusted Home Services

Avi@yourlocal.nz - www.yourlocal.nz - 022 534 5478

We specialise in

- Exterior house wash, windows, driveways, patios, decks, fences & roofs - Commercial, residential, rural, new builds & painters prep - Pests treatment (fumigation)
- Rodents & wasps - Chimney sweeping - Roof treatments

BUSINESS FRANCHISE FOR SALE

We cover Coromandel, Thames, Waihi, Waihi Beach, Whitianga, Whangamata

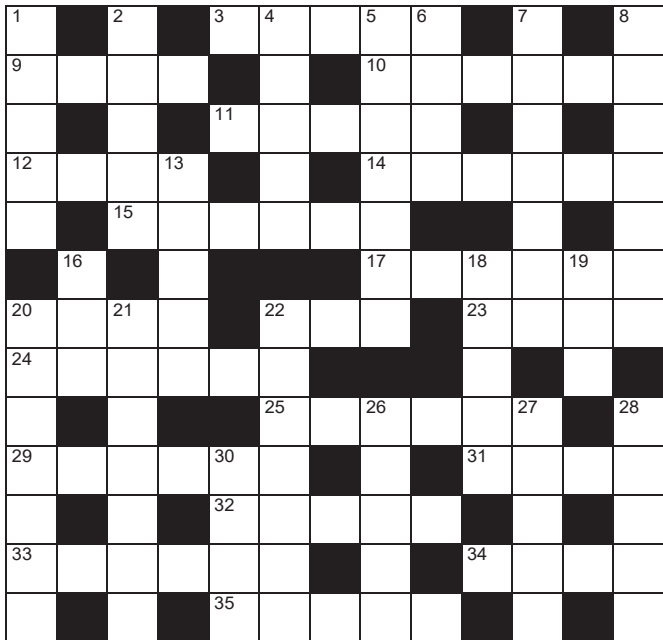
CLOTHING

YUKEYS
3620

Clothing Alterations and Repairs
LADIES - MEN - CHILDRENSWEAR

Open Tuesday to Friday 8.30am to 1.30pm
Saturday 9am to 12pm
105 Aickin Road (just off Port Road)
Whangamata
M. 021 0289 3968

QUICK CROSSWORD



Across

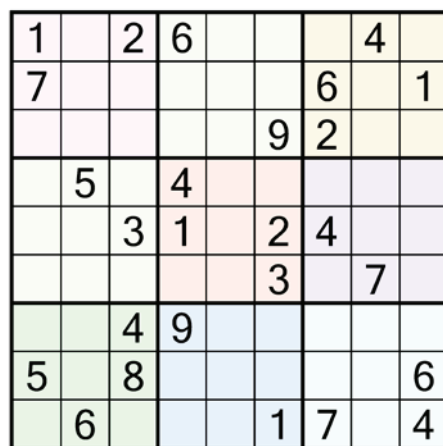
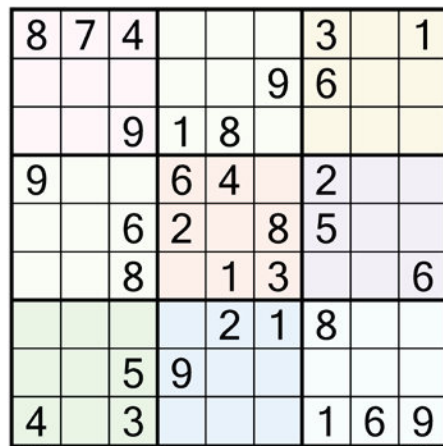
- 3. Fear (5)
- 9. Bend out of shape (4)
- 10. Rich cake (6)
- 11. Civic leader (5)
- 12. Behind (4)
- 14. Wrestling hold (6)
- 15. Former pupils (6)
- 17. Tranquillise (6)
- 20. Saucer-shaped object (4)
- 22. Signal (3)
- 23. Centre line (4)
- 24. Feebly (6)
- 25. Mollycoddle (6)
- 29. Silvery white metal (6)
- 31. Concluded (4)
- 32. Outspoken (5)
- 33. Decrease (6)
- 34. Minute parasite (4)
- 35. Allude to (5)

Down

- 1. Spin (5)
- 2. Play genre (5)
- 4. Kingdom (5)
- 5. Suffer mental anguish (7)
- 6. Challenge (4)
- 7. Honeycomb (7)
- 8. Tinted spectacles (colloq) (7)
- 13. Pull out hairs (5)
- 16. Fib (3)
- 18. Old-fashioned (5)
- 19. Pointed end (3)
- 20. Diminish gradually (7)
- 21. Irony (7)
- 22. Rotating wind (7)
- 26. Climb (5)
- 27. Restorative potion (5)
- 28. Riotous fight (5)
- 30. Always (4)

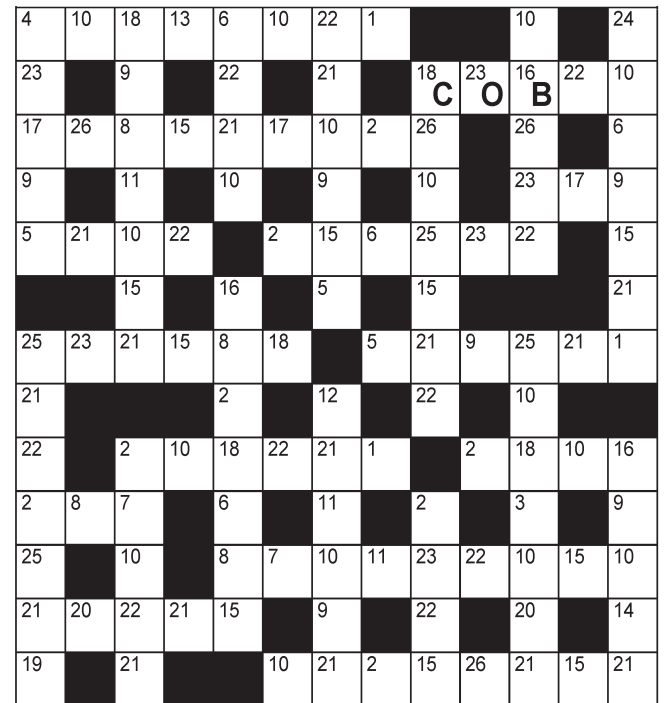
SUDOKU

Fill the grid so every row, column and 3x3 box contains the numbers 1-9



DECODER

Each number below represents a different letter. Find the correct letter for each number by working out the word from the letters given. To keep track, cross the letters off on the grid below.



A	B	C	D	E	F	G	H	I	J	K	L	M	N	O	P	Q	R	S	T	U	V	W	X	Y	Z
1	2	3	4	5	6	7	8	9	10	11	12	13													
14	15	16	17	18	19	20	21	22	23	24	25	26													
		B		C						O															

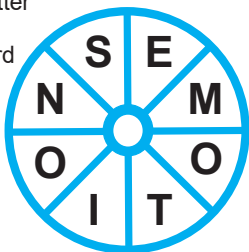
TRIO

The same three-letter sequence will complete each of the four words

___P
___ENT
IN___NE
___MATE

WORDWHEEL

Add one letter to make a 9-letter word reading clockwise or anti clockwise



SOLUTIONS

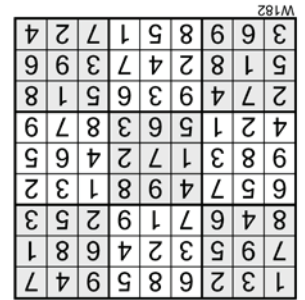
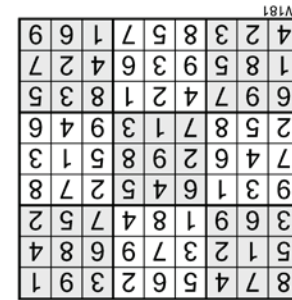
CROSSWORD

26. Scale, 27. Tonic, 28. Melee, 30. Ever, 20. Dwindle, 21. Sarcasm, 22. Cyclone, 13. Pluck, 16. Lie, 18. Dated, 19. Tip, 5. Agonise, 6. Dare, 7. Beeswax, 8. Sunnies, Down: 1. Twirl, 2. Drama, 4. Realm, 32. Vocal, 33. Lesson, 34. Mite, 35. Refer, 24. Weakly, 25. Cossel, 29. Nickel, 31. Done, 17. Sedate, 20. Disc, 22. Cue, 23. Axis, 11. Mayor, 12. Rump, 14. Nelson, 15. Alumni, Across: 3. Dread, 9. Warp, 10. Gateau,

DECODER

H	Q	F	O	L	I	N	U	Y	L	W	C	X	G	E	R	O	V	P	H
14	15	16	17	18	19	20	21	22	23	24	25	26							

SUDOKU



TRIO: ITC WORDWHEEL: SNOCILOWE

All puzzles © The Puzzle Company

Power and performance

1 only at this price

TC138T
Rear Catcher Model, Husqvarna Series V-Twin Engine, 38" Cut

\$7,699
\$8,990 RRP

2 only at this price

TS 138
Hydrostatic Transmission 38" cut

\$4,990
\$5,390 RRP

Q CARD

36 MONTHS INTEREST FREE*

*36 months interest free is available on Long Term Finance (LTF) for in-store and online purchases only. Min spend \$3,490. Lending criteria, \$50 annual Account Fee, fees, Ts&Cs apply. \$55 Establishment Fee applies to your first LTF transaction. \$35 Advance Fee applies to subsequent LTF transactions. Min payments of 3% of the monthly closing balance or \$10 (whichever is greater) are required throughout interest free period. Paying only the minimum monthly payments will not fully repay the loan before the end of the interest free period. Q Mastercard Expired Promotional Rate or Q Card Standard Interest Rate (both 27.99% p.a.) applies at the end of LTF Interest Free Period. (See Ts&Cs for Q Mastercard Standard Interest Rate applicable to outstanding balance of a Standard Purchase.) Rates and fees subject to change. Columbus Financial Services Limited and Consumer Finance Limited reserve the right to amend, suspend or terminate the offer and these Ts&Cs at any time without notice. Mastercard and the circles design are registered trademarks of Mastercard International Incorporated.

Shaun Prescott, Sales Manager
021 285 4870 / 07 864 7801
1 Hikuai Settlement Road, Hikuai
www.prescottsgarages.co.nz

CARE

5 YEAR DOMESTIC WARRANTY#

Terms and Conditions apply, see HUSQVARNA.COM for details.

We sell and service Husqvarna's huge range of product. We also demonstrate and deliver.

Visit husqvarna.com today

Offers valid 1/09/23 - 31/01/2024, while stocks last.