

Whangamatā & Waihi NEWS

ISSUE 148 – 22 AUGUST, 2025

FREE
COPY

PLEASE
TAKE ONE!



Beloved Swampies lose 34-50 P12

Photos by Mark James



FOLLOW US

BY LOCALS, FOR LOCALS, ABOUT LOCALS.

WE WELCOME YOUR CONTRIBUTIONS!

Email WhangamataNews@gmail.com • Facebook [@whanganews](https://www.facebook.com/whanganews)

Taken home by bach owners and visitors to everywhere

SEE ALL OUR EDITIONS LIVE AT
WWW.WHANGAMATANNEWS.NZ

EDITORIAL & MEDIA SALES:
JENNIE BLACK – 021 0232 1661

INDEPENDENTLY OWNED

DELIVERED TO WAIHI BEACH, WAIHI, WHIRITOA, WHANGAMATĀ, ONEMANA, HIKUAI, PAUANUI & TAIRUA



*The 1 in 3
could be me*

 **Cancer Society**
Daffodil Day
Te Rā Daffodil

Friday 29 August


Please donate this Daffodil Day.
Because the 1 in 3 who'll get cancer in their lifetime could be you, or someone you love.



Donate Now
daffodilday.org.nz

  Major Sponsor

HON SCOTT SIMPSON
MP for Coromandel



New education qualifications on the way

When speaking to parents around the electorate, as well as local businesses, it's evident that there are significant concerns that NCEA isn't equipping students with the skills needed to succeed.

That's why the Government is proposing to replace NCEA with a new national qualification, which will be underpinned by a new internationally comparable curriculum for Years 9–13. The key changes include:

Returning to marking assessments and subjects clearly out of 100 with grades that make sense to parents like A–E

Removing NCEA Level 1 so Year 11 students can focus on preparing for their main secondary qualifications in Years 12 and 13

Replacing NCEA Levels 2 and 3 with two new qualifications (The New Zealand Certificate of Education at Year 12 and the New Zealand Advanced Certificate of Education at Year 13)

These changes are proposed to be

phased in from next year, beginning with the new national curriculum in 2026, the Foundational Skills Award in 2028, and the new Certificates of Education in 2029 and 2030 for Years 12 and 13.

Education has been and continues to be a major focus for the Government, because it's the foundation for young New Zealanders to be able to contribute and make their mark on the world.

We've already banned cell phones in classrooms, introduced structured literacy and maths programmes, made huge investments into learning support, and stopped building open-plan classrooms.

Public consultation is open until 15 September and more information about this process can be found online at: <https://www.education.govt.nz/have-your-say/consultation-proposal-replace-ncea/details>

– Authorised by Scott Simpson MP,
614 Pollen St, Thames



FLOORINGXTRA.CO.NZ

**FLOORING TO
SUIT YOUR STYLE**

CARPET • VINYL • TIMBER • LAMINATE • RUGS

Phone or email us! We're measuring & laying! View samples instore!

**WHANGAMATA
FLOORING XTRA**

Whangamata | 636 Port Road | 07 865 8562 | whangamata@flooringxtra.co.nz

Scott Simpson
MP for Coromandel

Contact me anytime
0800 550 330 • scottsimpson.co.nz
mpcoromandel@parliament.govt.nz
 [scottsimpsonmp](https://www.facebook.com/scottsimpsonmp)

Authorised by Scott Simpson, Parliament Buildings, Wellington.




**Whangamata
SERVICE CENTRE**

 NZ's PREMIUM AUTOMOTIVE CENTRES

Full Mechanical Repairs, Lubrications and Services, WOFs, Tyres, Tune ups, Batteries, Wheel alignments, Diagnostics.

Scan Tool.

 AA Breakdown services
First Assistance Breakdown services



P. 07 865 9435 • 201 Aickin Road, Whangamata
M. 027 608 5770 • E. wgmssc@xtra.co.nz

For your design needs

- Adverts
- Signs
- Posters
- Flyers
- Magazines
- Business cards
- Gift vouchers and more...

Contact Anna Gledhill
aljgledhill@gmail.com or **021 653 148**

Designer for *Whangamata & Waihi News* and the *Repco Beach Hop* programmes




It's Whangamata Lions' daffodil time again!

You will already have seen the cheery sight of real daffodils for sale for a few weeks in many outlets around the town, picked and bunched by volunteers from Whangamata Lions.

You'll also see soon the Cancer Society's Daffodil sale of artificial daffodils, just for one day, on 29th August, raising funds nationally for research and patient support.

Why is Whangamata Lions' daffodil fund-raising different?

When you buy a bunch or two of that cheerful sign of Spring, that is your direct contribution to the Lions Cancer Society Lodge in Hamilton, as absolutely all of the money raised from the sales is donated directly to the Lodge which provides, for no charge, crucial residential support to patients undergoing cancer treatment at Waikato hospital. Last year, the Lodge provided over 17,000 bed nights and over 43,000 meals to those in need. There will be many reading this who have already benefitted from a stay at the Lions Lodge or will need to stay there at some future time.



With your support, Whangamata Lions will be able to make another substantial donation to the Cancer Lodge. It's worth mentioning that in the 45 years since 1980, around \$225,000 has been given to the Lodge by this Lions' project!

You don't need to be a Lion if you'd like to help with the picking or packing of the daffodils. Please go to our Facebook page, or phone me on 021 0246 9772.

– Dianne Trembath, Project Organiser, Whangamata Lions

The power of community voice in action

The last Whangamata Community Board meeting was a powerful reminder that local voices do matter — and when united, they can shape outcomes that reflect the heart of a town. Despite Council officers recommending a shift of the Information Centre into a commercial premises, it was the strength and clarity of the public's input that turned the tide.

Seven speakers, Whangamata Ratepayers and Enterprise Whangamata Business Association represented a cross-section of our community groups, stood up not just for a building, but for a symbol — a community-built, purpose-driven space on the Main Street that has served as the welcoming face of Whangamata for years. Their advocacy was more than sentiment; it was a call to protect the town's identity and support what works.

That two board members changed their position after hearing from the public is no small thing — it is democracy working at its most local and most authentic level. The final 4-2 vote in favour of keeping the Information Centre where it belongs is not just a win for tradition, but a win for the voice of the people.

Whangamata has spoken — and it has been heard.

– Terry Walker, Deputy Mayor

Curtains and Blinds and More

CURTAINS
ROLLER BLINDS **SHEERS**
WHANGAMATA
SHUTTERS **HOME BACH**
BEACH PAUANUI
VENETIAN BLINDS
WHIRITOA SURF
THERMALS BLOCKOUTS

Contact Louize or Gavin

027 4777 916

FREE NO OBLIGATION MEASURE AND QUOTE

email info@curtainsandblinds.co.nz

www.curtainsandblinds.co.nz

SHOP

FINAL WEEK



Local

Thank you for investing in our community by shopping local you are supporting our local businesses.
 'Shop Local' is continuing until 29 August 2025.

PRIZE MONEY UP FOR GRABS:

1st Prize
\$300

2nd Prize
\$150

3rd Prize
\$100

Simple:

Shop - Scan to enter ▶

Proof of purchase is required to collect the prize



Proudly supported by

Harcourts Whangamata

Two locals nominated for a Zony Award



Rehearsals are well underway for Whangamata Theatre Society's upcoming show **A Spotlight on Broadway**. Two of the cast who performed in last year's show **Heaven Help Us** have been nominated for a Zony Award for Best Supporting Actor in a play.

Jenna Dorreen played Natasha Hollows and Kevin Brinsden played Trevor Brown in the light hearted comedy set in the waiting room of Heaven.

The ZONY Awards have been established to recognise performance and production excellence amongst members of the Musical Theatre New Zealand Zone 2 region. The Whangamata Theatre Society are very proud of



these two and their achievements.

With their upcoming show "A Spotlight on Broadway" audiences can expect beloved numbers from classics such as The Wizard of Oz, Chicago, Mamma Mia and Matilda, among others. With a cast of 38 of all ages it will be a show not to be missed.

The show will run for six performances from 13-20 September 2025, at the Whangamata Memorial Hall. Tickets can be purchased at the Info Centre, Port Road, Whangamata or email teedfelton@gmail.com if you wish to pay online.

- Therese Dixon

Thank you

It was a lovely celebration at the Pauanui Club on Saturday evening for a big thank you for the volunteer work and support seeing this massive task finally finished: the new irrigation system for the Pauanui Golf Club. The new irrigation system was displayed with the sprinkler's being turned on. Just like clock work.

From the tireless volunteers helping on the days, to the diggers coming in, the tree removal, stump grinding, electrical, work, trencher digging, root cutting, pipe laying team and the amazing ladies keeping everyone being fed. To Andy Bolton great dedication for over seeing the project.

The project came in under budget also due to the generous support from the local donors with a massive \$195.65 contribution.

The celebration finished with a few drinks and a barbecue.

Congratulations to Andy Bolton with his name being put forward for a life membership to the Pauanui Club.

The Pauanui Golf Club now have a irrigation system to be proud of.

Pauanui Club life member John Courtney congratulated Andy Bolton on being nominated as life member.

- Pat Courtenay



Sally Smith Whangamata Community Board Candidate

I'm standing for the Community Board because I believe in getting things done.

My positive attitude and strong communication skills, combined with a proven track record of following through on commitments, make me an effective advocate for our community.

My work with Enterprise Whangamata has connected me with hard-working local business owners and dedicated volunteer groups throughout our town.

These relationships have deepened my understanding of what our community needs to thrive.

I want to help shape Whangamata's future - ensuring development is balanced and fair while protecting the special character that makes this place paradise.

I'll bring practical solutions and a collaborative approach to every decision.

**Vote for Sally Smith for the
Whangamata Community Board**
A fresh face, a fresh outlook and a fresh approach



Human Collective

**HR MADE SIMPLE —
IN WHANGAMATĀ, WAIHI & BEYOND.**
Personal, practical, and here when you need us.

Running a business is challenging enough without having to navigate tricky staff matters or endless paperwork. That's where **Human Collective** comes in.

We provide down-to-earth, local HR support and coaching to help your business thrive:

- **Recruitment & Onboarding** – find and keep the right people for your team
- **HR Compliance** – up-to-date employment agreements and workplace policies
- **Making Change** – restructures, role changes, or improving how your team works
- **Dealing with Tricky People Issues** – performance management, disciplinaries, mediation
- **Ad Hoc Support & Advice** – your on-call HR partner, just a phone call away
- **SME Coaching** – practical guidance to grow your business and your leadership

Whether you're hiring your first employee or leading a busy team, we bring the expertise and reassurance you need — without the corporate fluff.

Contact Laura McCabe: 021 502 338
laura@humancollective.co.nz • www.humancollective.co.nz



A dose of reality

Emma Mackintosh (NZH 8/8/25) recognises that we need to lift the standard of our infrastructure assets if we are to meet future needs.

Unfortunately, she then loses focus, getting distracted by climate change and the need to keep our people safe from "the destruction approaching our shores". She opines that priority should be given to preventing the heating of the planet and ridding ourselves of the need for fossil fuels.

The reality is that on a global scale, our emissions are minuscule and any sacrifices we make at the altar of climate action will have no measurable effect.

We are already witnessing the damaging impact on a struggling economy of short-sighted political decisions that deny access to natural gas with little thought given to the establishment of viable alternatives. The result, stockpiling imported coal to mitigate shortfalls in electricity generation and the undermining of industries reliant on reliable, economic energy supplies. Add to these, the folly of planting productive farmland in pine trees.

All of these are factors that have a negative effect on the economy. If we are to build the infrastructure we need, including effective defences against storm damage, we need an economy that plays to our strengths

and supports the industries that add to our economic performance. Without meaningless impediments.

George Williams
WHANGAMATĀ

DOC poisons indiscriminate

The department of conservation (DOC) has ordered up another drop of 1080 over the Otahua area south west of Whangamatā and their national poison programme manager, Peter Morton, has stated 1080 bait is being spread for possum and predator control this month.

The poison itself does not have the ability to distinguish which creature is and which creature isn't a 'pest' and so every creature living under a 1080 drop gets a killer dose of poison.

Stoats, weasels and ferrets are carnivores. EPRO is spreading a grain-based bait which is only attractive to herbivores.

A herbal bait to kill a carnivore relies on a mountain of poisoned herbivores before any carnivores are 'controlled'.

There are many such weaknesses in DOC's rationale for spreading this highly toxic poison in such a widespread manner.

Should these weaknesses be thoroughly explored the entire wild animal poisoning industry would

have to be closed down.

In order to keep the poisoning going the government has funded an army of 'scientists' to come up with research results to show the positives of 1080. Here's one example:

In 2017 DOC monitored possum numbers before a 1080 drop in five areas of the Papakai forest. Two of the areas had no possums in them at all. The possum numbers found in the other three areas were totalled up and averaged out among all five monitored areas. It came to 6.96%.

The poison was dropped over the previously possum-free areas where post-drop monitoring again produced no possums at all. DOC's publicity portfolio shows the figure of 6.96% taken before the drop was brought down to zero percent after the poisoning.

"What more proof could you have of the beneficial effect of 1080?"

DOC staff must wonder just how much evidence does it take to convince those anti-1080'ers!

With this kind of 'science' behind him Peter Morton confidently claims: "We've demonstrated how 1080 can keep possums to a low level in southern Coromandel".

But Morton does not mention all the other wild species whose numbers are also kept to a low level by his perpetual poisoning. Most other species ingest a lot more 1080 than

the possums.

The poison scientists came up with a chart: First these scientists measured how much 1080 each different animal could take before it killed them. They tested cats, pigs, rats, sheep, cows, you name it – even possums – and observed how quickly each animal succumbed to 1080.

The research reports reveal the range of physical death throes each animal went through before death finally brought release. The quickest to die were put at the top of the list, the most 'resistant' to 1080 were at the bottom. The possum appeared at the half-way mark on the chart which meant that half the species tested were more vulnerable to 1080 poison than the possum. One bait can kill a possum. That same bait can kill 12 dogs.

On each hectare of the forest DOC spreads enough 1080 poison to kill 120 possums or 1500 dogs. The dogs aren't there so there's plenty of poison left over on every hectare for all the other creatures of the air, earth and water who live in or downstream from the poisoned forest.

All of them are being kept to low levels by regular drops of 1080 which Morton tells us is 'improving the ecosystem health in Coromandel'.

John Veysey
COROMANDEL



Join Us AT THE WHANGAMATA CLUB





Whangamata Club
Sat 23rd Aug 6.30pm
Playing Hits From The 50's To Now 2025



ALL BLACKS
\$23 BUFFET BREAKFAST
(Members Only Price)
DOORS OPEN 8AM
BUFFET BREAKFAST FROM 8.30AM
KICK OFF 9AM

SCRAMBLED EGGS
BACON
SAUSAGES
GRILLED TOMATO
HASH BROWNS
BAKED BEANS
TOAST & BUTTER

FROM HAKA TO HASH BROWNS. GAME ON!
SUNDAY 24TH AUGUST



RED TONIK BAND
SATURDAY 30th
AUGUST 7.00pm
LIVE AT THE WHANGAMATA CLUB

OPEN DAILY FROM 11AM

BISTRO
Monday – Friday from 3pm
Saturday & Sunday from 12pm

DINNER MENU
From 5pm daily

RESTAURANT
Friday to Sunday from 5:30pm

404 PORT ROAD  **FACEBOOK.COM/THEWHANGACLUB** **WWW.WHANGAMATACLUB.CO.NZ** **P. 07 865 8705**

Whangamata Harbour birds: The Pied Stilt

Stilts are a cosmopolitan species occurring right around the world in tropical and warm temperate regions. Our population of pied stilts are thought to have colonised New Zealand as recently as the early 1800's and currently number around 30,000. This rapid colonisation is thought to have occurred as a result of the clearance and conversion of lowland swamp forest into seasonally wet grassland. Their numbers have remained stable around this level over the past 50 years. Their Conservation Status is 'Protected Native'.

This slim, long-legged, black and white wader is resident in small numbers in Whangamatā Harbour and the Otahu Estuary throughout the year. Over the winter months

its numbers increase dramatically when up to 100 birds flock here from other North and South Island populations. A popular high-tide roosting site for these birds is along the rock breakwater wall on the northern side of the Whangamata Marina. Its long fine black bill, very long pink legs that trail behind them when in flight and high pitched yapping calls are its other distinctive identifying features.

Most pied stilts breed in colonies numbering up to 100 pairs, but more commonly 5-20 pairs. These are usually located on gravel riverbed sites, on mounds surrounded by water, open and recently flooded or recently cultivated pastures, margins of ponds, estuaries and other permanent wetlands. Occasionally lone pairs will make breeding



attempts, usually unsuccessfully. The nests are made in shallow depressions lined with grasses, other vegetation and mud. They will lay up to 4 eggs with both adults sharing the incubation duties. Hatching occurs about 25 days after commencement of incubation and the chicks will leave the nest once dry. They will fossick for food themselves straight away under the watchful attention of the parents. They continue to be brooded by their parents as required, even after they have fledged which is usually about four weeks after hatching. Food for both parents and young is largely insectivorous, taking both larval and adult aquatic and terrestrial invertebrates. Worms, crabs, small fish and molluscs and even some flying insects on the

wing are also taken.

Interestingly, New Zealand does have another resident species of stilt, the black stilt. It is classified a "critically endangered endemic species". Its home territory is in the McKenzie Basin, headwaters of the Waitaki River system in the South Island. It's current population is around 200 birds. It has been the subject of an intensive recovery programme since the mid 1970's, due to its high vulnerability to introduced predators and cross-breeding with its "pied" cousins. Unlike most pied stilts, black stilts nest singly, thereby lacking the mutual protection afforded the pied stilts that nest mostly in colonies.

- John Adams, Whangamata Harbour Care. Photos by Bevan Walker.



PATRICK KERR For Mayor



My commitment to you:

- 1. Back to Basics**
- 2. Fiscal Prudence**
- 3. Community Board Empowerment**
- 4. Real Transparency**
- 5. Economic Development**

**YOUR DECISION:
CHANGE or
more mediocracy?**



WHANGAMATA SLSC

37°20'24"S 175°87'88"E

WSLSC announces blessing & grand opening dates

The Whangamatā Surf Life Saving Club is thrilled to announce two major milestones in the re-opening of the renovated club buildings. A special dawn Blessing Ceremony on Saturday, 27 September, followed later by an Opening Celebration on Saturday, 8 November, 2025.

Club Chair Gavin Scott says "these key dates will be great opportunities for our members and friends to look around the building and help us say thanks to our supporters big and small who made this happen."

The blessing, led in partnership with local iwi Ngāti Pū, will formally open the building in a culturally respectful way before life saving operations move in. The later Opening Ceremony in November will feature a ribbon cutting, speeches, guided tours, and community celebrations.

Life Member and Project Manager Bryan Black acknowledged the support of those who had helped the club to date. "As you can appreciate funding has been a challenge in the current environment, with Surf Life Saving New Zealand and a number of very special individuals/families ensuring our core build could be completed." There is still a sizeable funding gap in respect of completing interior enhancements and fit-out of around \$150,000 - \$200,000.

To help close the funding gap, we have launched a couple of fundraising campaigns. For \$550, you can purchase a personalised brick that will be laid along the outer edge of the new concrete path, or you can contribute via our

Give a little page 'Whangamatā Surf Life Saving Club - Building Renovation Funding Gap!' to secure your brick, or to donate through our Give a little page, visit our website or get in touch by email or phone (details at the end of this release).

In the lead-up to both events, the Club is calling for volunteers to join a series of Saturday working bees to help prepare the building:

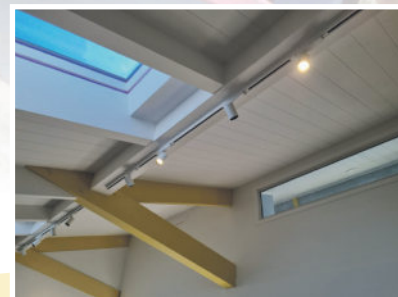
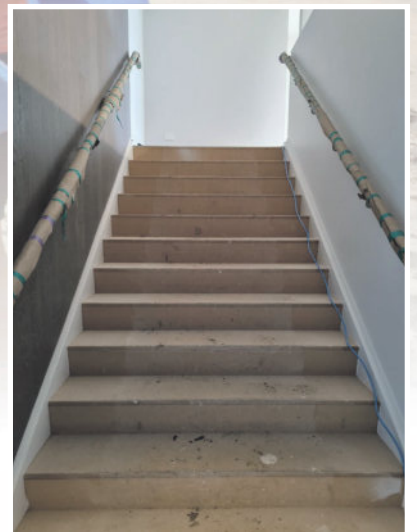
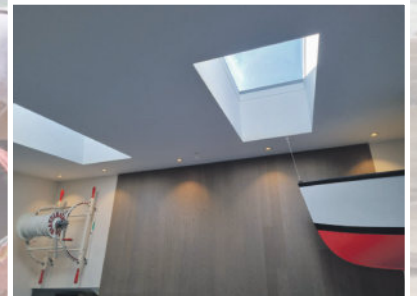
- 30 August - Working Bee #1 - Scrub & Sort
- 4 October - Working Bee #2 - Moving in Day
- 18 October - Working Bee #3 - Contingency day - final sort before season start
- 25 October - First Day of Patrol for the season.

"These working bees are a chance for members and supporters to get hands-on and be part of the final stage of this exciting journey," says Club Manager Dianna Harrison. "The Club invites the community to be part of the journey, whether by attending the events, volunteering at a working bee, or making a donation.

EVENT DETAILS:

- Blessing Ceremony: Saturday 27th September 2025, 6am - all welcome.
- Formal Opening Celebration: Saturday 8 November 2025, details to be confirmed.

For all details on events and fundraising efforts, visit our website whangamatasurf.co.nz or get in touch via email admin@whangamatasurf.co.nz or phone 078658401



WHANGAMATA SURF LIFE SAVING



Cnr Lowe Street & Esplanade Drive
Whangamata
manager@whangamatasurf.co.nz
(07) 865 8401

www.whangamatasurf.co.nz

*To all of our sponsors, members, supporters and friends;
we couldn't do what we do without you.*

Thank you from the bottom of our collective hearts.

WAS celebrate multiple success

It's been a huge fortnight at Whangamata Area School. Surfing, Adventure Racing, Netball, An annual Sports Exchange, and iconic Beach Run have all kept students across the school busy. Check out some of the event reports.

Beach Run

Last Monday's Year 1-8 Beach Run was a reminder of how lucky we are to live in paradise. Our Sports Coordinator, Jen Taylor, along with our Property Manager Bruce and a team of volunteer parents & students, did an amazing job of organising the day - thank you for being superstars!

Thank you also to the supporters for encouraging all of our tamariki, and congratulations to the competitors who tried their very best. He tino pai tō mahi!

WAIBOP Zone Secondary Schools Netball Tournament

Sunday 10th August, 17 girls from the WAS netball teams, Toa and Tipu, travelled to Tauranga to take part in a netball tournament. Tipu played 5 games and Toa played 6 games. Everyone showed up with a positive attitude, played their best throughout the day and supported each other. It was a great opportunity for us all to experience this level of secondary school netball and to take part in a tournament. Thanks to our team coaches and managers, the parents who drove us and cheered us on from the sidelines and to our umpires.

- Anika and Samara

Nike World Scholastics Surfing Finals, Hawaii

We had a school surf team competing in Hawaii at the Honua Finals World Cup of Interscholastic Surfing. The event took place at Ala Moana Bowls; a Hawaiian reef break known for its heavy and bowly waves. There were 43 teams competing and the competition was fierce with a range of world

class junior surfers competing from across the globe.

12 students travelled with a boys team and girls team made up of shortboarders, longboarders and bodyboarders (each leg compulsory to compete for the team overall scores).

Shortboarders: Manu Roberts, Taj Dal Bosco, Harrison Biddle, Lennox Jennings, India Kennings, Lola Groube, Chloe Groube

Longboarders: Ash Rogers, Archer Easton, Harrison Biddle, Lola Groube, Chloe Groube

Bodyboarders: In Petchkav, Lola Groube.



Lola Groube.

- Kritis McNaughten.

The event started off with an opening ceremony where our students really stood out from the other teams. India introduced us all with a mihi followed by a team haka led by Manu. A locally shaped necklace worn by Manu and blessed by the team was then presented to the competition host. An awesome cultural reflection of the school and New Zealand.



Get 2 Go Team in action.

- Ryan Thompson.

Manu, Taj and all of our girls made it through their first heats; all surfing to the peak of their abilities. Manu slid into a barrel 10 seconds into his heat and India ripped through her first round with some powerful manoeuvres.

The quarter finals saw our boys getting knocked with the girls holding on to clinch semifinal and finals spots.

Lola Groube really fired up the crowd with a deep barrel followed by a fiery layback in the final rounds scoring a 9.00; the biggest score throughout the entire girls shortboard division. Lola was also our only surfer that competed in all three legs making the finals for shortboard and bodyboarding (impressive with this being her first time competitively bodyboarding) and semi finals in the longboard.

Our girls team placed 2nd overall taking home a silver medal and Lola placed 2nd overall in the girls shortboard division. Our boys placed 10th overall.

We are very proud of our competitors and the way they presented themselves throughout their time away. They represented their school and country exceptionally well and competed ferociously. The trip offered plenty of waves and a cultural experience

that has left each of us with some very special core memories.

Thank you to Anderson Surfboards and Saltwater for their support providing our kids with surfing essentials. Also thank you to I Love Ugly for providing us with our seriously good surfing and travel kit. We appreciate it!

- Kirtis McNaughten

Get 2 Go Multi Sport Adventure Racing Regional Finals

It was a case of "different year, same result" for our teams at the Get 2 Go Regional adventure sport finals last Friday. As defending regional champions, WAS went on with high hopes but a completely different group of students to last year. Such is the popularity of adventure racing in our kura, we were able to send two teams. The Whangamatā 1 team of Frankie, Megan, Mia, Jessie, Jacob, Reed, Harvey, and Kai placed 1st overall and took out the regional title, again qualifying our school for the national finals at Ruapehu in early December. The Whangamata 2 team of Louisa, Averie, Daisy, Smith, Lachie, Mila, Adam, and Taryn also placed in the top 5. A great effort from these year 9 and 10 students and a huge thanks to Matua Ryan for coaching the teams to success once again.

S M O K Y P A L L E T

F R E E H O U S E



\$20 PIZZA & JUG

With live Music

EVERY FRIDAY 4PM-6PM



@Smokypalletwhanga



@Smokypallet



'A Window on Wardrobe'

The upcoming local theatre production, 'A Spotlight on Broadway', has provided a great opportunity to make use of the wealth of items in the Theatre Society's lock-up wardrobe. With a cast of 40, made up of male and female adults and youth, singers, dancers and narrators, the costuming requirements are a huge part of this production.

This is being managed very competently by Wardrobe Mistress, Valda Ritchie and her team of helpers, myself included.

It has been an absorbing experience for me, putting my sewing skills to use, discovering new ways to solve fitting issues and playing with ideas to create costumes appropriate to the time period and song/dance being performed, as well as

discovering more of the possible gems for costume and dress-up in our wardrobe.

Come to the show, for a feast of costume, song and dance performances! You will not be disappointed, and who knows – you might even spot an idea for your next party/dress-up occasion!

– Jeanette Winslade

Tickets for "A Spotlight on Broadway" are available now at the Whangamata Info Centre or by emailing Therese Dixon at teedfelton@gmail.com.

Everything in the wardrobe is available for hire, with a small charge to help cover lock-up costs.

Contact Lyn Doreen 027 2957102 or Jeanette Winslade 027 306 6984.



Whangamata Theatre Society Inc.
Presents

A Spotlight on Broadway

Whangamata Memorial Hall

Performances

Sat 13 Sept 7pm	Sun 14 Sept 2pm
Tues 16 Sept 7pm	Thurs 18 Sept 7pm
Fri 19 Sept 7pm	Sat 20 Sept 7pm

Adults \$30
Children \$20 (school age)
Members \$25

Tickets on sale at Whangamata Info Centre
or email teedfelton@gmail.com

LEADERSHIP YOU CAN COUNT ON

☒ *Vote*

Peter Revell for Mayor

- ✓ Control rates
- ✓ Empower communities
- ✓ Prioritise core services
- ✓ Smarter financial control
- ✓ Protect environment

Find out more at coromandelmayor.co.nz

Authorised by Peter Revell, Kauaeranga Valley. revellp@gmail.com

Tairua's Whai Rugby League full line-up

Tairua Rugby League kicked off its first season in style yesterday at the Hauraki District Rugby League carnival hosted in Thames. The event brought together clubs from across the district for a vibrant day of rugby league, filled with smiles, energy, and community spirit.

For the first time, Tairua fielded a full line up with teams across every age group! A huge milestone for the community. A particularly proud moment came with the debut of Tairua's first ever under 15s side in any sport, marking a new chapter for local rangatahi.

Players took the field in their brand new kits, which was made possible through the generous support of major sponsors and the wider community. Seeing the tamariki and rangatahi proudly wearing their colours was a highlight of the day, with many parents and supporters cheering from the sidelines.

The games were not officially scored, in keeping with the focus on participation, fun, and development rather than competition at this age level. The emphasis was on giving every player the chance to get involved, showcase their skills, and enjoy the game without added pressure.

This season also marks a new era for the club, which is now powered by the Tairua Sport and Recreation Trust. After a few months of hard work behind the scenes, Tairua Rugby League has launched with a strong foundation, fresh kits, and a community determined to make this season a success.

Next up, Tairua Rugby League will host the next round of Conference B games at Whangamata, promising another exciting day of league action.

- Betty-May Mason, Tairua Rugby League Co-ordinator



Sports results

500 CARD CLUB

We meet every Wednesday 1-4pm. Come along and join in the fun.

6 August: There were 40 players.

Highest score:
Bruce Lowrie - \$20 voucher
Runner-up:
Chris Boston - \$10 voucher
Middle score:

Ann Jacobs - \$10 voucher
Lowest score:
Murray Robson - bar of chocolate
Raffle Winner: Stephanie Prisk
- \$25 NW Voucher

13 August: 24 players.

Highest score:
Lyn Dorreen - \$20 voucher
Runner-up:
Colette Slack - \$10 voucher
Middle score:
Snow Harris - \$10 voucher

Lowest score:
Graham Curd - bar of chocolate
Raffle Winner:
Terry Bailey - \$25 NW Voucher

TABLE TENNIS

14 August: We had 18 people come along to play Table Tennis at the Whangamata Club. Some good competition was had, and some very close games.

The winner on the day was Wayne Broome, with 10 wins out of the 11

games played. Runner-up was Tony Rowe with 8 wins. Third equal were Steve Bagnall and Roger Wolfe, with 7 games won each.

WHANGAMATA MAH JONG

15 August: We had 42 players.

1st with 58 pts - Daphne Inglis
2nd with 52 pts - Snow Harris
3rd with 51 pts
- Heather Dansby-Scott

The lucky number was 15 and was won by Tilly Scherer.



NEW



Power and performance

Husqvarna 410 XE Nera Automower

- GPS wire free
- All new EdgeCut
- Up 1000m2
- 30% slope performance
- 4G and WiFi connected
- Radar
- Theft protection
- Made in England

\$6,058
Fitted

Electrical installation costs not included.



5 YEAR DOMESTIC WARRANTY#
Terms and Conditions apply, see HUSQVARNA.COM for details.

Shaun Prescott, Sales Manager
021 285 4870 / 07 864 7801
1 Hikuai Settlement Road, Hikuai
www.prescottsgarages.co.nz

We sell and service Husqvarna's huge range of product. We also demonstrate and deliver. Visit husqvarna.com today

Our Coromandel

News from Thames-Coromandel District Council



Get to know your candidates

Our Council has offered candidates running for Councillor and the Mayoralty in this year's election the opportunity to be filmed answering key questions such as why they think they are best for the role they are standing for.

These videos will be published on our Council website's election page, alongside candidate profile statements.

Meet the Candidate events are also listed on our website. These include the upcoming Meet the Mercury Bay Ward and Mercury Bay Community Board Candidates event on Sunday 24 August at The Dunes Golf Clubhouse, Matarangi Drive from 4pm – 6pm.

To find out more about whose standing for Council and what other election events are being held, visit tcdc.govt.nz/elections



Some election candidates have been filmed as part of our Council's efforts to help communities get to know their candidates better.

Growing green futures in our schools

From planting native trees to caring for worm farms, our local tamariki are leading the way in sustainability thanks to the EnviroSchools Programme, funded by our Waste Levy Fund. Tamariki are supported to plan, design and carry out sustainability actions that matter to them and their communities. Guided by Māori perspectives and celebrating cultural diversity, this hands-on learning connects tamariki with their environment and inspires real-world change.

The Paper4Trees programme sees schools and preschools rewarded with a native tree for every two cubic metres of paper and cardboard they recycle. Meanwhile, the Zero Waste Education programme has been educating children about the topic of sustainable resource use since 1993. This award-winning programme is offered to schools throughout our Thames-Coromandel District to students in years 1-8 each year. Additionally, there are three units for preschools.



The Whangamatā Playcentre whānau (pictured above) have thoroughly enjoyed being part of this programme over the past two years. "Our tamariki have learned so much from Whaea Lenny and Harriet (the puppet), especially about caring for our tiger noke (worms) and understanding rubbish and recycling. By tending to our worm farm and reducing our waste, our tamariki are also learning to care for Papatūānuku and growing their understanding of kaitiakitanga. A big thank you to TCDC for funding this valuable programme."

Together, these initiatives are helping grow a generation of environmentally aware young people – one worm farm, recycling bin and native tree at a time.

Get involved and find out more at tcdc.govt.nz/education

CLIMATE CHANGE RESPONSE

Our Council adopted two key documents in August.

The Climate Change Strategy

directs our Council's organisational response to climate change, setting out what we will do to adapt and protect our assets and services, and our approach to working with communities.

The Greenhouse Gases Emissions

Reductions Plan identifies our current emission volumes and how much we need to reduce them to achieve Council's long-term emission reduction goals.



CLIMATE CHANGE
THAMES-COROMANDEL
DISTRICT COUNCIL

Creative Communities Scheme funding open

Apply by Friday 29 August

Funding for creative projects and events that increase community participation in the arts.

Projects will need to include at least one of the following outcomes:

- Creating opportunities for local communities to engage and participate in the arts
- Support diverse art forms and cultural traditions of local communities
- Enable and encourage young people (under 18) to participate in the arts.

tcdc.govt.nz/ccs

Thames-Coromandel District
creative
COMMUNITIES nz

OUR NEXT WHANGAMATĀ COMMUNITY BOARD MEETING WILL BE ON TUESDAY 26 AUGUST AT OUR SERVICE CENTRE, 620 PORT RD, FROM 10AM.



@ThamesCoromandelDistrictCouncil



coromandel_tcdc



Get our free eNewsletters!
www.tcdc.govt.nz/subscribe

tcdc.govt.nz

customer.services@tcdc.govt.nz
Private Bag, 515 Mackay St, Thames
Phone: 07 868 0200

STORMWATER UPGRADE UNDERWAY ON HETHERINGTON RD

Shick Construction crews have made good progress on the stormwater upgrade along Hetherington Road and have been enjoying positive connections with residents and regular walkers passing the site.

The footpath in the reserve linking the Marina and Hetherington Road (next to Breakers Motel) will be closed from Monday 25 August for a few weeks. With construction vehicles moving to and from the compound stockpile area and work happening nearby, it's simply not safe for the public to use this walkway.

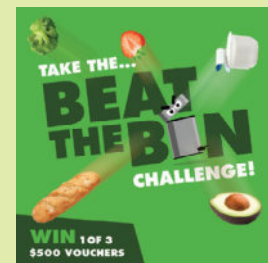
We know this is a busy path, especially in the mornings, and we apologise for any inconvenience while the closure is in place.

This upgrade is part of our six-year programme to improve stormwater network performance and reduce flooding risk. Construction is expected to be completed by summer 2025, and there are also traffic disruptions during this time, so please plan your travel accordingly. Find out more at tcdc.govt.nz/whangamatastormwater

TIRED OF WASTING FOOD (AND MONEY)?

Our Council is helping Love Food Hate Waste NZ's campaign to reduce food waste. Challenges are better with mates! Rally your whānau, workmates, or flatmates and see how much fun you can have

saving food (and the planet) together. And just to sweeten the deal there are great prizes to win, including 1 of 3 \$500 grocery vouchers when you complete the challenge in August, and lots of spot prizes along the way too! See lovefoodhatewaste.co.nz/beat-the-bin



Valley struggle in season opener

Well bugger. I've got to say, it's a lot harder writing about me beloved Swampies after a loss than it is after a win, and a thumping 34-50 loss makes it even tougher. That scoreline, at home, is not the way you want to start any campaign, especially after leading 29-26 at the break for oranges. Losing the second half 5-24 less than ideal, plenty of 'learnings' in this one I'm sure. Early doors though, and as Tighthead's first lady friend said back in the dim dark days of Mark IV Zephyr, it's not how you start, it's how you finish, and there's still a lot of rugby to play before the season's end.

The match was played in weather cold enough to freeze the balls of a brass monkey (google that one kids, it's not what you think), with a variable breeze that the Swampies took in the first spell. It started well too, a try down the short side of an attacking line-out to Dromgool, duly converted by Collard, and it looked like things were going swimmingly. However, the Mid Canterbury Hammers struck back within minutes, and the match became a game of punch and counter punch as the teams traded tries.

The Hammers actually snuck ahead on the scorecard briefly, 14-10, in the first quarter, before a double strike by the Valley looked to put the game back in control. First impressive lock Aporosa Vuniyayawa was unstoppable close in after a series of attacking rucks to reclaim the lead. From the kickoff Kirk Ngatai soared highest to claim a bomb, before setting a rampaging Lesen Huirangi away on a galloping run. An accurate long pass from Vuniyayawa gave Collard space from fullback, and a nice arcing 30 metre run put the powerful fullback in for a try and a 22-14 lead.

But the Hammers didn't lie down and die, and with five on the clock, scored to bring the match back to 22-21 to the good guys dressed in yellow. Then that man again, man mountain lock Vuniyayawa burst through in the midfield on a 50 metre gallop, with fellow lock Connor McVerry being the beneficiary and taking the five pointer to extend the lead- 29-21 with seconds left on the clock before half-time. Again though, those pesky Cantabs didn't play it safe, phase after phase saw a five



And we're underway: Logan Allen kicks the 2025 Heartland Campaign off.

metre line-out, and a sleepy Valley line-out let the classy Hammers hooker Jackson Donlan sneak in at the corner, and a 29-26 scoreline at half-time.

From here though, the match turned to custard for the Swampies. The

Hammers took control through their quality set piece and squeezed the Valley out of contention. It took a while, but once the lead was conceded after 58 minutes, two more tries in quick succession saw the match over by the 68th - 45-29. A late try to Valley replacement

hooker Chad Bracey gave a glimmer of hope with eight to go, but the Hammers had the last laugh, and 50 points, with a second try to their hard working six, McGregor Best.

Standouts for the Valley from this old front rowers eyes were hard working hooker Kenan Gilson, a tackling machine, try scoring locks McVerry and Vuniyayawa, and human wrecking ball flanker Lesen Huirangi. Huirangi with ball in hand was harder to stop than me old mate Brett Pyke bee-lining to a free buffet. The high numbers were led well by sharp scrumhalf Finley Davenport, and Kirk Ngatai on the wing was dangerous with limited chances.

Thames Valley 34 (C Dromgool, A Vuniyayawa, Q Collard, C McVerry, C Bracey tries; Collard penalty, 3 conversions) lost to Mid Canterbury 50 (far too many tries [8], conversions [5] and no penalties). HT 29-26.

- Tighthead Ted, Whangamata & Waihi News Sports Reporter
- Photos by Jason Bartley



Tryline bound: Quinn Collard into the clear, with Logan Allen and Sam McCahon in support.



Stretching the legs: Tighthead prop Adam Coyle at full



Stand aside: Lesen Huirangi making the hard yards.



High Hurdles: Finley Davenport leaps a defender.



Stop me if you can: Try time for lock Aporosa Vuniyayawa.



Men at Work: Cam Dromgool, Isaac Seiuli, Connor McVerry, Lesen Huirangi and Adam Coyle prepare for battle.

Waihi NEWS

Get to know your Emergency Hub before you need it

Waihi Beach Community Emergency Hub Team Leader Sue Towler, left, and Waihi Beach RSA Manager Mel Gearon with the new sign which identifies the RSA as the official location of the Waihi Beach Hub.

Western Bay of Plenty District Council is encouraging people to get to know their local Community Emergency Hub – before they need it.

Recent heavy rain and tsunami threats are a reminder of how quickly things can change and how important it is to be prepared, says Kurt Waugh, Council’s Community Resilience Advisor.

“Natural events like this can happen with little warning, so knowing your local hub is really important,” he says.

Community Emergency Hubs are in place across the rohe (District) to help locals connect and support each other when the unexpected happens, explains Kurt.

“These are led by the community, not emergency services. In a major emergency, it’s the people around you who make the biggest



difference,” he says.

“It’s all about locals helping locals – and the more people who know where these hubs are and how they work, the stronger and more resilient our communities will be.”

Over the coming weeks, Kurt will be hosting emergency drop-in sessions at Western Bay libraries, where people can find out more about the Hubs and what they can do to stay safe in an emergency.

The sessions will feature ‘grab bag’

examples to help people prepare their own, and tsunami/earthquake virtual reality simulators.

From Pukehina to Waihi Beach, there are 15 Community Emergency Hubs in the Western Bay, run by more than a hundred volunteers.

Council provides training to volunteers, and each Hub has a guide document which explains the different roles needed and how to organise an emergency response.

Located at schools and community facilities, Hubs may be opened up by keyholders living in the area, when there has been a large-scale emergency.

“In a major disaster, like a big earthquake or flood, roads and other infrastructure can be damaged, cutting off communities. Emergency services will be focused on the most urgent needs and may not be able to reach everyone right away,” says Kurt.

“Community Emergency Hubs are places where locals can gather and help each other out, in a coordinated way. We’re grateful to all the amazing people in our community who already volunteer

their time, and we’re always looking for others ready to step up and help when an emergency happens.”

Locally, the Hubs are gaining more visibility, with new signs starting to appear throughout the rohe.

One of those locations is the Waihi Beach Community Emergency Hub, which is located at the local RSA.

The Hub’s team leader Sue Towler has been involved with several emergency services over the years and says it’s an opportunity to give back.

“It gives the community a sense of comfort and security to know that there is a safe haven to go to in a crisis.”

Emergency Preparedness Sessions

Ōmokoroa: Wednesday 27 August, 10am–1pm, Ōmokoroa Library and Service Centre, 28 Western Avenue

Waihi Beach: Monday 1 September, 10am–1pm, Te Ara Mātauranga, 106 Beach Road

Katikati: Wednesday 10 September, 10am–1pm, The Centre – Pātuki Manawa, 21 Main Road

**Purchase 2 brand new tyres
and go in the draw to WIN a
\$250 TYRE VOUCHER!
LAST WEEK TO WIN for AUGUST!**

JUNE WINNER
Nicky Oliver Smith

JULY WINNER
Arabella O'Hanlon

Nevada Soames from Barfoot & Thompson presents our JULY WINNER Arabella O'Hanlon with her prize.

GOODRIDE
PERFORMANCE TYRES

KUMHO TIRES

WE BULK BUY SO YOU SAVE!
Terms & Conditions apply.

TYRE HQ
WAIHI

PH 07 863 9211 WWW.TYREHQ.CO.NZ

Proudly Supporting Our Community

DILLIMORES
FURNISHERS & FLOORING

**THE NATIONWIDE
FLOORING
SALE**

**FREE
MEASURE
& QUOTE**

AUGUST 1ST - SEPTEMBER 30TH 2025

Feltex *Godfrey Hirst*

SEDDON ST, WAIHI | PH 07 863 8084 | CCDILLIMORES@GMAIL.COM

OVER 60 YEARS IN THE BUSINESS MEANS SOMETHING



Waihi NEWS

School Memories: Perseverance, and Community Spirit

The history of Waihi East School is one of determination, resilience, and strong community spirit.

Thanks to the 1991 book *Slate to Computer – A History of Education in the Waihi District* published by the 1991 Waihi Schools Jubilee Committee, we are able to share the stories and memories of pupils and teachers whose experiences span generations. The wonderful thing about schoolyard recollections, is that we can all relate to a time 'back when', and in doing so, we help preserve them for the future.

The push for an East School began in 1896, when residents petitioned for a school of their own, citing more than 200 children of school age in the area. The request was denied, as were later appeals, despite land being set aside on Donnelly Street. At last, in February 1906, construction was approved.

Tragedy struck for the school community on 14 December 1939, when Francis "Poppy" Middleton raised the alarm as flames tore through the school. The glow was visible from across town. Despite the Waihi Fire Brigade's efforts, the building and all its records were destroyed.



Image replicated from *Slate to Computer*.

The school committee jumped to action and funding was quickly secured for a "temporary" five-classroom replacement, which opened for students on 4 March 1940 — impressively less than three months after the fire!

The first school had stood for 32 years; and its temporary replacement lasted another 33, before locals again fought the Education Board to keep a separate East School when amalgamation with Central School was proposed again. When the new permanent school was approved and eventually opened in 1975, the temporary

buildings were relocated to the Waitawheta Base Camp, where I believe they still stand today.

Among the many voices in *Slate to Computer* is Hazel Landy, a pupil from 1914–1922 who returned as a teacher from 1939–1973. She remembered the quiet seriousness of the first school day, slate pencils squeaking over pot hooks, and the joy of playing among the macrocarpa trees. Hazel also recalled the origins of the annual Gala Day, which in 1955 funded the building of the school pool. The annual Gala remains a permanent fixture on the school calendar,

continuing to foster an enterprising spirit amongst students.

Another past pupil, Dick Leach, described his daily journey from Homunga Bay, often on horseback with his brother Lawrence, facing steep hills to get to school and arriving late if they had to walk. Having walked this recently myself, can you imagine doing this twice a day?!

Through fluctuating rolls, mine closures, and later growth, Waihi East School has remained a proud part of the community. One of its more recent "glow ups" is a colourful themed mural on the library's exterior and refreshed interior, a nice acknowledgment of the school's enduring spirit.

Local teen and former Waihi East student Bella Paulsen, with her passion for local history, is now working on an end-of-year exhibition at the Waihi Arts Centre & Museum, which will celebrate the history of all Waihi schools. In anticipation of this, the *Whangamata & Waihi News* will share a series of stories from each school over the coming months. Keep an eye out!

– Sam Roff, Waihi News Reporter



Lions Club of Waihi
Proudly supporting our community

LIONS Daffodil BRUNCH

Saturday, 30th August
Waihi RSA
9:30am to 11:30am
\$35 per head
Profits go to Daffodil Day

live
music

Raffles

buffet
brunch

games
& quiz

TICKETS available from Liz at the Council office beside the Waihi Library or from daffodil sellers the day before. Tickets are limited so get in quick to Liz if you want to be sure of a place.

 lionsclubofwaihi



SALE

NOW ON 30-50 % OFF

**10 Rosemont Road
Waihi**

www.ladiva.co.nz





Baker Joinery Ltd

"Craftsmanship with care"

- Kitchens
- Joinery
- Wardrobe Solutions

- Laundry
- Bathrooms
- Pre-Hung Doors

For top-notch craftsmanship & expertise in joinery & cabinetry
contact 07 863 8962 | info@bakerjoinery.co.nz
 Or pop into our Show Room 46 Johnston Street, Waihi

SHOW ROOM OPEN SATURDAYS

HDC NEWS

Changes to your Rates

What's new for 2025/2026?

Property rates instalment due dates

Following community feedback about receiving three rates invoices in October last year, (HDC rates, HDC water rates and WRC rates), we've changed the property rates instalment due date months to September 2025 and March 2026.

Wastewater rates move to water invoices

From 1 July 2025 the wastewater rate you pay will move from your Property Rates invoice to your Water Rates invoice. If your property uses a septic tank, you won't see any change.

Water rates invoicing schedule

We've made some changes to our water meter reading and invoicing schedule. Check the billing months to see if your location has changed at www.hauraki-dc.govt.nz/property-rates/water-rates-instalment-dates



View your rates for 2025/26

Use our online address search tool to check your property rates and water rates for this financial year at www.hauraki-dc.govt.nz/property-rates/rates-search



Paying your rates

Have a Direct Debit with us?

If you're already set up with direct debits for rates and/or water, there is no immediate change to them. Your payments will continue as normal. We'll notify you once our annual Rates direct debit recalculation process is complete.

Have an Automatic Payment set up?

You'll need to update these yourself through your bank. Contact us if you need help in working out what you will need to pay to cover your rates and/or water to 30 June 2026.

Water Invoices

Your water bill now consists of three charges.



Water Connection

A fixed charge of \$243.36 per water connection per annum.

This pays towards the cost of infrastructure and maintenance to bring water to your water meter. It also includes water meter readings and water meter renewals.



Water Consumption

Covers the cost of treating the actual water used, with stepped levels of pricing based on consumption:

- Up to 200 cubic metres = \$4.27
- 200-400 cubic metres = \$3.07
- Over 400 cubic metres = \$2.61



Wastewater Connection

A fixed charge of \$847.56 per pan/toilet per annum. A residential property is considered 1 pan.

This covers the cost of infrastructure and treatment of the wastewater coming from your toilets, so it can be safely discharged back into the environment.

Waikato Waters Ltd

Te Mana o Te Wai, Te Mana o Te Tangata – Healthy Water, Healthy People

It's official! Hauraki District Council, along with six other Waikato councils formally signed the Shareholders' Agreement for Waikato Waters Limited (WWL) on Monday 25 July. This marks the company's official incorporation as a joint council-controlled organisation (CCO), making Waikato Waters Ltd the largest joint water CCO in New Zealand.

Hauraki District will transition into Waikato Waters Ltd on 1 July 2027. Until then, it's business as usual. The only change you'll see for now is the Wastewater Rate included on your water bill rather than your land rates bill. Stormwater management remains with HDC.

Waikato Waters: your top 5 questions answered

1

Who owns Waikato Waters?

Hauraki, Matamata Piako, Ōtorohanga, South Waikato, Waipā, Waitomo and Taupō, district councils jointly own the company on behalf of their communities.

2

Why is a waters CCO needed?

Pooling resources gives our councils the scale and investment power needed to meet tougher water standards, plan for growth, and protect our waterways for future generations.

3

Will my water bills change?

In the short term, pricing will remain consistent with each council's current plan. Longer term pricing will be set by Waikato Waters.

4

What about iwi involvement?

The agreement commits to building strong, strategic partnerships with iwi, reflecting Treaty settlement obligations. In addition, each council maintains its own unique relationship with iwi and hapu in their rohe.

5

What is the status of Taupō District Council?

Taupō District Council is a Stage 1 shareholder having chosen for now to go with a stand alone water services delivery model. They will review this position within the next two years. However they remain a shareholder of Waikato Waters Ltd and will be using shared services such as procurement.

For more information about Waikato Waters visit www.waikatowaters.co.nz

Save up to \$805 off your rates bill

On 1 July 2025, the rates rebate income threshold per household increased. This means you could be eligible for a rates rebate of up to \$805.

Are you a SuperGold Card holder*? If so, then your income threshold is higher.

Check your eligibility and apply online at <https://www.hauraki-dc.govt.nz/property-rates/rates-rebates-scheme> or contact your local Council.

If you qualify, your completed application must be received by your local council by 30 June 2026.

*A copy of your signed SuperGold Card must be included with your application.



Waihi NEWS



Vixens take the win

Following the Heartland fixture, the Thames Valley Vixens had a cracking battle with King Country, before taking the win 23-15, four tries to three.

In arctic-like conditions, which saw penguins taking shelter by the fire in the clubrooms, Valley did enough with limited possession to take the win over the Trailblazers.

Valleys props Montana Taogaga and

Steph Te Ohaere-Fox led the way with ball in hand, skittling defenders with many strong carries. Lock Emily James was into everything and showed some fine ball skills. Halfback Rangimarie Wirihana directed play like a veteran, while fullback Jayleigh Tamati, centre Natasha Forsyth and wing Maddy Hill were always dangerous.

- Tighthead Ted, Whangamata & Waihi News Sports Reporter
Photos by Jason Bartley

Emily James in the clear.



Caremen Samson looking for suport.



Steph Te Ohaere-Fox charging forward.

Waihi newspapers – a long history in our town

The prosperity of Waihi as a major town in the late nineties is reflected in the fact that it boasted two rival newspapers.

The Waihi Mines [*The Waihi Miner - E*] was first published in October, 1895 and issued bi-weekly by Messrs Galbraith and Vercker-Bindon, later being taken over by James Marsden Wrigley who had been a member of the Staff. The last issue appeared on 1 March, 1901.

The Waihi Chronicle was established in 1898 and was printed and published by Thomas Collins and William Wallnut who had come to

Waihi in 1896 and was Mayor from 1923-1947. The paper was short-lived but Mr. Wallnut continued to be a contributor to other papers as well as to run a share-broking business near the top-left of Seddon St (we are reproducing an old photograph showing this and the adjacent offices of Haszard and Johnston).

The Waihi Daily Telegraph emerged on 4 March, 1901, Miners' Union Day. It was advertised as an up-to-date evening newspaper priced at one penny, and printed overseas cables as well as local news reflecting the life of a thriving mining town. This paper was owned by Messrs

Geddes and Blomfield and was edited and published by John Turner. W. J. Geddes was connected with the *Auckland Observer* but spent part of his time in Waihi, serving on the first Borough Council in 1902. The *Telegraph* was later acquired by W. H. Toy (a Borough Councillor 1915-17) who edited it for over 20 years, and on



his death was succeeded by his son, W. A. Toy until the paper went out of existence in 1951.

- Source: Ohinemuri Regional History Journal 10 October 1968

Owens Flooring

We Have All Your Flooring Needs Covered
Flooring Sales & Installation • Domestic & Commercial

Exclusive
SUPER SPECIAL PRICES
on Solution Dyed Nylon Carpets

CARPETS AVAILABLE IN 36oz, 45oz, 55oz, 65oz all available in 12 new colours!

Carpets • Vinyls • Floor Sanding • Laminate & Planking
Showroom: 5/57 Wilson Road at Waihi Beach • 07 863 5723 / 027 233 7277
sales@owensflooring.co.nz • www.theflooringfoundation.co.nz • www.owensflooring.co.nz

Baker Glass & Glazing Ltd

"Craftsmanship with care"

- Glass Repairs
- Shower Glass
- Splashbacks

- Balustrades
- Retro-fit Double Glazing
- Insurance Quotes

Member AMN
Masterglaziers network
Proudly supported
by Metro Glass

Contact 021 514 497 | glass@bakerjoinery.co.nz

Waihi NEWS

\$6373 raised for Starship

What a great night at the Waihi RSA we all had on August 9th for the annual Trivia Quiz Starship Foundation fundraiser. Absolutely fantastic prizes were on auction from super generous Waihi Business owners and groups. Tables were packed with teams ready and eager.

Mayor Toby Adams was our fantastic MC for the night and really fired up the bidding for an incredible cause. Club Manager Donna Taylor assisted Toby with getting prizes out to the crowd. An

incredible \$6373 was raised for a truly worthy cause.

Come and support your RSA, they have a lot coming up: The Auckland Boys Choir Friday, 29 August; Waihi RSA Oktoberfest on 4 October; RSA Car Show on 26 October, with great entertainment starting at 7pm; and a very special entertainer SHANIA - Country Legend! coming 29 November, watch this space – tickets \$30 and selling now.

- Jennie Black
Photos by Mark James, Waihi News



100% HOME WAIHI

BLACKOUT SELL OUT

ON NOW

*T&Cs Apply.

beko Heat Pump Dryer
BDPB8010W

- 8kg capacity
- 15 drying programs
- OptiSense drying system
- EcoGentle technology
- Fusion filter
- Water tank indicator
- Child lock
- 8 Star Energy rating
- H 846 x W 598 x D 630 mm

\$1098

SAMSUNG 43" TV
UA43DU800SXNZ

- 4K UHD (3840 x 2160) resolution
- Dynamic Crystal Colour, Contrast Enhancer
- Motion Xcelerator, HDR
- Q-Symphony, Object Tracking Sound Lite, Adaptive Sound
- Crystal processor 4K, AirSlim design
- Smart Hub, Bixby, Tizen OS
- Terrestrial and satellite tuners
- Built-in Wi-Fi 5, Bluetooth (5.2), HDMI x3, USB x1

\$813

SAMSUNG Freestanding Dishwasher
DW60M6045FWSA

- 13 place settings
- 6 wash programs
- 60 Minute Express Wash and Half Load setting
- Noise level 46dBA
- Aqua stop and leakage sensor
- Child lock
- Wide LED display
- 4.5 Star Water rating
- 3.5 Star Energy rating
- H 845 x W 598 x D 600 mm

\$749

100% HOME WAIHI

24 ROSEMONT ROAD, WAIHI • PHONE 07 863 8207
email waihi100@xtra.co.nz • www.100percent.co.nz

We've Got Your Back

We're always checking price Talk to us.

NEW LISTING



Boundary lines are indicative only

BAYLEYS



Whangamatā 224 Beverley Terrace

Commanding beachfront

Opportunities like this are generational.

224 Beverley Terrace—an unrivalled slice of Whangamatā's golden coastline and one of the most exclusive beachfront offerings to hit the market.

Positioned absolutely beachfront with nothing between you and the white sands, this prized, immense 1,712 square metre (more or less) site is a true rarity.

Slightly undulating, sun-drenched, and directly fronting the ocean, it offers a once in a lifetime canvas to create the ultimate coastal estate. Build the dream residence, look to subdivide, or simply landbank a premium piece of paradise in one of New Zealand's most coveted seaside streets.

Owned by the same family since the 1970's, the existing character-filled home carries the charm of summer holidays past, retro, liveable, and full of heart. While the likely future lies in grand architectural vision, it is ready to enjoy right now for weekend getaways or laid-back family escapes.

With elite beachfront positioning, the lifestyle here is unparalleled. Wake to the sound of the surf, step from your deck onto the sand, and soak up uninterrupted views that stretch endlessly across the ocean.

Properties of this calibre, with this land size, in this location, are exceptionally scarce. Whether you're looking to design your legacy home or secure a trophy holding in a tightly held enclave, this is your moment.

Contact Dale or Gordon for a private viewing and take your first step toward owning one of Whangamatā's finest beachfront addresses.

1712 sqm  4  2 

Auction (unless sold prior)

11am, Thu 18th Sept 2025
96 Ulster Street, Hamilton

View Open Home — Sat 11am—11:30am
16 Aug, 23 Aug, 30 Aug, 6 Sep, 13 Sep
or private viewing by appointment

Dale Sholson 021 636 519
dale.sholson@bayleys.co.nz

Gordon McGregor 021 998 810
gordon.mcgregor@bayleys.co.nz

BAYLEYS



MH REALTY LTD, BAYLEYS, LICENSED UNDER THE REA ACT 2008

CLASSIFIEDS

DEATH NOTICE

PITTAMS, Brian Charles.

After a long and hard fought battle with cancer, Brian passed away peacefully surrounded by his family on 5 August 2025 aged 89.

Amazing, devoted, cherished husband and mate of Barbara for over 65 years. Adored father of Reid and Patsie, Miriam and Erhan, Greg and Lisa; dearly loved Grandad of Alex, Victoria, Tony, Jamie and Kayla.

Brian was heavily involved in education throughout his career and was a school principal for many schools throughout New Zealand, as well as holding roles as an advisor, counsellor and NZEI fellow.

He enjoined many interests and passions - of most importance are his long association with golfing organisations - especially Whangamata Golf Club where he was a patron and life member. He enjoyed a good beer and was a keen brewer, an avid photographer and his gardening efforts made for many amazing meals.

Grateful thanks are extended to the many doctors and medical teams that supported Brian through his fight with cancer.

FOR SALE

CARAVAN FOR SALE

Jayco 28 Foot 2002 - VIEW LOCALLY



AFFORDABLE TINY HOME!

Totally renovated, new carpet, vinyls, repainted interior, shower, toilet, double bed, oven, it really is chic!

All the extras! Registered.

PRICE REDUCTION

Contact 021 0232 1661

FOR SALE

PLATES FOR SALE

Looking for reasonable offers \$3K

Ideal for Beach Hoppers!

Can pick up or courier from Rotorua.

Call Jamie 027 316 6011.



SITUATIONS VACANT



Build Great Spaces with Covered.

Experienced Fabricator/Installer Wanted. Start ASAP.

At Covered, we create beautiful louvre roofs and outdoor living spaces that help people make the most of the Kiwi lifestyle. Based in Whangamatā, our locally owned business has been transforming backyards across the Coromandel and beyond since 2013. We're a friendly, tight-knit team who take pride in quality craftsmanship, smart design, and great customer service.

We're on the lookout for a skilled **Fabricator / Installer** with previous building industry knowledge and experience, who's as comfortable chatting with customers as they are on the tools. If you take pride in getting the details right, enjoy variety in your day, and want to work with a friendly team in a relaxed coastal setting, we'd love to hear from you.

Give Laura a call for more information or send your CV to laura@humancollective.co.nz. Alternatively feel free to drop your CV into our offices at 300 Casement Road and we will be in touch.

SITUATIONS VACANT

WE'RE HIRING

BAR OPERATOR



We are seeking an experienced and enthusiastic hospitality contractor to run our seasonal bar for the 2025/26 summer season.

Key Information:

- We are looking for a contractor or small hospitality operator to manage the bar.
- There is no commercial kitchen, but we welcome proposals that may include limited food offerings to sustain the beverage service under the sale of liquor guidelines (e.g. platters, food trucks, or external catering partnerships).
- The atmosphere is relaxed and social, focused on providing a friendly, welcoming space for members and their guests.
- As a club, our goal is to foster a positive, inclusive environment, not to operate as a commercial bar.
- We invite you to submit a proposal outlining your experience, ideas for operating the bar, and how you can add value to the WSLSC community.

If this sounds like you, please email your proposal through to our Club Manager manager@whangamatasurf.co.nz. Any questions or further information wanted? Give Dianna Harrison a call, 0277263917



Whangamatā Tides 2025

AUGUST 2025										
		☾ New Moon: 23 rd					☀ Full Moon: 9 th			
Date		High tide	Height (m)	High tide	Height (m)	Low tide	Height (m)	Low tide	Height (m)	Sun rise / Sun set
		AM		PM		AM		PM		
22	Fri	5:45	1.7	18:19	1.9					06:52 17:46
23	Sat	6:41	1.8	19:09	1.9	0:27	0.4	12:43	0.3	06:50 17:46
24	Sun	7:32	1.8	19:56	1.9	1:18	0.3	13:32	0.3	06:49 17:47
25	Mon	8:19	1.8	20:39	1.9	2:05	0.3	14:18	0.3	06:48 17:48
26	Tue	9:03	1.8	21:20	1.9	2:49	0.3	15:01	0.3	06:46 17:49
27	Wed	9:44	1.8	22:00	1.8	3:31	0.3	15:43	0.4	06:45 17:50
28	Thu	10:25	1.8	22:38	1.8	4:11	0.3	16:24	0.4	06:43 17:51
29	Fri	11:05	1.7	23:17	1.7	4:49	0.4	17:05	0.5	06:42 17:51
30	Sat	11:47	1.7			5:29	0.4	17:48	0.5	06:41 17:52
31	Sun		1.7	12:33	1.6	6:10	0.5	18:34	0.6	06:39 17:53

SEPTEMBER 2025										
		☾ New Moon: 22 nd					☀ Full Moon: 8 th			
Date		High tide	Height (m)	High tide	Height (m)	Low tide	Height (m)	Low tide	Height (m)	Sun rise / Sun set
		AM		PM		AM		PM		
1	Mon	0:42	1.6	13:23	1.6	6:55	0.5	19:24	0.6	06:38 17:54
2	Tue	1:31	1.6	14:18	1.6	7:44	0.5	20:18	0.6	06:36 17:55
3	Wed	2:24	1.6	15:14	1.6	8:38	0.5	21:14	0.6	06:35 17:56
4	Thu	3:21	1.6	16:09	1.6	9:34	0.5	22:10	0.6	06:33 17:56
5	Fri	4:19	1.6	17:01	1.7	10:29	0.5	23:04	0.5	06:32 17:57
6	Sat	5:15	1.7	17:51	1.8	11:22	0.4			06:30 17:58
7	Sun	6:08	1.7	18:38	1.9		0.4	12:12	0.3	06:29 17:59
8	Mon	6:58	1.8	19:25	1.9	0:45	0.3	13:01	0.3	06:27 18:00
9	Tue	7:47	1.9	20:12	2.0	1:33	0.2	13:50	0.2	06:26 18:00
10	Wed	8:36	1.9	20:59	2.0	2:20	0.2	14:38	0.2	06:24 18:01
11	Thu	9:25	2.0	21:47	2.0	3:08	0.1	15:27	0.2	06:23 18:02
12	Fri	10:15	2.0	22:36	2.0	3:56	0.1	16:18	0.2	06:21 18:03
13	Sat	11:07	1.9	23:28	1.9	4:46	0.1	17:11	0.3	06:20 18:04
14	Sun			12:02	1.9	5:37	0.2	18:07	0.3	06:18 18:05
15	Mon	0:23	1.8	13:01	1.8	6:31	0.2	19:07	0.4	06:17 18:05
16	Tue	1:21	1.7	14:04	1.8	7:29	0.3	20:10	0.5	06:15 18:06
17	Wed	2:24	1.7	15:07	1.8	8:31	0.4	21:14	0.5	06:14 18:07
18	Thu	3:29	1.7	16:08	1.8	9:35	0.4	22:17	0.4	06:12 18:08
19	Fri	4:32	1.7	17:05	1.8	10:36	0.4	23:15	0.4	06:10 18:09
20	Sat	5:31	1.7	17:57	1.8	11:33	0.4			06:09 18:10
21	Sun	6:24	1.7	18:45	1.8	0:08	0.4	12:24	0.4	06:07 18:10
22	Mon	7:11	1.8	19:28	1.8	0:56	0.3	13:10	0.3	06:06 18:11
23	Tue	7:55	1.8	20:09	1.8	1:39	0.3	13:54	0.3	06:04 18:12
24	Wed	8:35	1.8	20:48	1.8	2:20	0.3	14:34	0.4	06:03 18:13

Only the BEST TRADIES will do!

Use Locals... For Locals... Support Locals!

ASIAN FOOD

A&A Asian Store
Shopping made easy

17 ROSEMONT ROAD, WAIHI (opp. Farm Source)

• Japanese • Korean • Filipino • Vietnamese
• Malaysian • Thai

Ramen & Buldak noodles, corn dogs, dumplings, fish cakes,
frozen meals, sweets, drinks and so much more...

FREE DELIVERY TO WHANGAMATA

Tuesday - Sunday 9am to 5pm • Phone 021 0256 107

SMALL ENGINE REPAIRS

ANTS REPAIRS

Whangamata-based small
engine repairs & maintenance

• Chainsaws • Lawnmowers
• Ride ons • Weedeaters

121 Sharyn Pl • 021 0244 2791
ants.repairs.nz@gmail.com

LANDSCAPING

Beach Contractors
Landscape Supplies

LANDSCAPING SUPPLIES:

Bark, mulch,
compost
and topsoil

Sand, lime chip,
river stones
and pebbles

Cement, builder's
mix and a range
of metals

Delivery service available

Whangamata Yard
2546 Waihi Whangamata Rd
M. 027 261 1262

Waihi Beach Yard
691 Waihi Beach Rd
P. 07 863 5340

LAND DEVELOPMENT

Birch
LAND DEVELOPMENT CONSULTANTS

Subdivisions
Boundary Markings
Land Use Consents Topographical Surveys
Building Setout and Certifications

Contact us
0508 4 BIRCH
tairua@birch.nz
244 Main Road, Tairua
www.birch.nz

EARTHWORKS

Blackhill
EARTHWORKS

• Bobcat & excavator • Driveways
• Tight access work • Hole drilling
• Site works • Concrete prep
• Topsoiling • Cartage

Shay 021 742 966 | www.blackhillearthworks.co.nz
info@blackhillearthworks.co.nz

IT SUPPORT



Boot it.

FIBRE INTERNET
now available to
order from Boot I.T.

We are the Coromandel's
only local Fibre Internet
Provider, and the ONLY
provider that offers 7 days
per week support.

Call us on 0800 242 266
to find out more.

PAINTER & DECORATOR

BOOF BOLAND
PAINTER & DECORATOR

M: 0274 367 254
E: jenboof@outlook.com

Master Painters New Zealand

PAINTER

TOTAL PAINTING SOLUTIONS

CALL LEE ON 0275 656 336
Lee.tpms@gmail.com

30 Years of Interior & Exterior Painting
Delivering High-Quality Service with
Exceptional Results

CONCRETE

BROWNMORE CONSTRUCTION
CONCRETE CONTRACTORS

Any Concrete Requirements: Slabs, driveways, patios, paths, etc

All types of concrete - colour - finish

Council Permits for Vehicle Crossings

Excavation to finished product • Saw cutting & drilling

We take pride in doing a quality job at a competitive rate

REX: 027 285 5489

P. 07 863 3364 • office@brownmoreconstruction.co.nz

www.brownmoreconstruction.co.nz

PAINTER & DECORATOR

Gavin Johnson
PAINTER & DECORATOR

Interior/Exterior Painting

Wallpapering

Cedar Cleaning and
Restoration Service

0224 552 363

brushstrokeswhangamata@gmail.com



GLAZIER

CLEARVIZ
INSTALLATIONS LTD

• Glass and glazing
• Frameless shower
enclosures
• Mirrors
• Aluminium window
maintenance
• Sliding wardrobe doors
• Wardrobe organisers

REGISTERED WINZ
SUPPLIER

clearvizinstalls@gmail.com • 0273-727-533

DIGGER & CARTAGE

COAST DIGGER & CARTAGE

• Digger & Tip Truck Hire
• Driveways
• Building Digouts
• Site Works
• Concrete removal
• Track work
• Hole Drilling
• Tree Felling & Removal



Murray Clarke 027 2010 209
muzzclarke66@hotmail.com

FENCING

RURAL FENCING • RESIDENTIAL FENCING
POST AND RAIL • RETAINING WALLS
POLE SHED BUILDINGS
ORCHARD BUILDS & MAINTENANCE

coastline
FENCING LTD

BLAIN TEMPELMEYER 027 784 6538
coastlinefencing7@gmail.com

PAINTER

Coastline
Property Painters



Protecting your investment
■ Interior ■ Exterior ■ Roofs ■ Updates & photos as your job progresses
Call Richard Upton: 0274 884 881 / www.coastlinepropertypainters.com

ADVERTISING



Contact Jennie
Whangamata
NEWS

Phone
021 0232 1661

whangamatanews@gmail.com
Secure your space on here today!

Use Only the Best Services in our Community!

Use Locals... For Locals... Support Locals!

OUTDOOR COVER

Covered.

- Louvres
- Privacy Panels
- Awnings
- Sails

LOUVRE SYSTEMS

info@covered.co.nz 07 865 6207 or 027 497 1236
www.covered.co.nz 300 Casement Rd. Whangamata

CURTAINS / BLINDS

Curtains and Blinds and More
Whangamatā

LOCALLY OWNED AND OPERATED

- Curtains
- Venetian Blinds
- Roller Blinds
- Romans Blinds
- Shutters
- Honeycomb Blinds

100% Mobile Service
We come to you, Free Measure and Quote

Call Louize or Gavin
on 027 4777 916
or email info@curtainsandblinds.co.nz

FRAMING

FRAMESNZ

- Picture framing
- Framed mirrors
- Art installation
- Pick up & delivery

Ade Cunningham
M. 0274 929 695 or P. 07 575 9149
info@framesnz.co.nz • www.framesnz.co.nz
300 Port Rd (corner of Ajax Rd), Whangamata

ELECTRICIAN

**GREG HENSTOCK
ELECTRICIAN LTD**

Registered Electrician
One Man Band

**WHANGAMATA
0272 580 366**

HANDYMAN

HANDYMAN

30 yrs experience, specialising in:

- Bathroom, deck & building repairs
- Gib fixing & plastering
- Interior /exterior painting

Please ring Rex on 021 997 428

BUILDING & LANDSCAPING

**HBL HANSEN
BUILDERZ**

BUILDING & LANDSCAPING

COMMITTED TO EXCELLENCE
Contact us to discuss your project & a free estimate today

ADRIAN 0274 263 895 | hansen.builderz@gmail.com | HBLHomesnz
Residential | Commercial | Alterations | Additions

ARCHITECTURAL BUILDERS

HOME & Lifestyle

- Architectural Builders
- Interior & Colour Design Services
- Project Management

For trusted expertise with your building project
Katrina Jackson 027 273 0685 | Leigh Goodman 027 4475 423
info@homeandlifestyle.co.nz

BUILDING WASHING

HOUSE WASHING

Exterior house or commercial building wash, roof wash, fences, driveway, patios – soft-wash for best moss and lichen clean and treatment, exterior window cleaning, or general water blasting, 100m of hose so access is no problem.

Prompt local service with 20 years' experience.

Ph 0800 747 787 email housewash@xtra.co.nz **or dial Andy direct on 027 313 4386**

HYDRAULIC HOSE SERVICE

**THE HYDRAULIC
HOSE COMPANY LIMITED**

Your Local

Mobile Hydraulic Hose Service
Waihi, Whangamata, Thames/Coromandel

Matt: 0274 123 996
For Service That Counts

CLEANING

jae

we'll take care of it

- Carpet Cleaning
- Pest Control
- Flood & Fire Restoration
- Stain Removal
- Upholstery Cleaning

07 863 8358 or 0800 225 552
whangamata@jae.co.nz

50 YEARS

AUTOMOTIVE & BOATS

JCD CUSTOMS & MARINE

BOAT TRAILERS, CARS, CLASSIC & HOT RODS

ONLY Repco STOCKIST IN TOWN! **ONLY HONDA AGENT IN TOWN!**

Aickin Road, Whangamata (next to Bunnings)
P. 865 9073 | E. office@jcdcustoms.co.nz
Mon-Fri from 8am

TRAVEL BROKER

Kay Gregan
The TRAVEL BROKERS
The Travel Designer

AWARD-WINNING TAANZ BONDED TRAVEL BROKER
Travel Broker & CLIA Accredited Cruise Specialist
Whangamata 07 865 9568 | M: 027 337 6222
Kay.Gregan@thetravelbrokers.co.nz
thetravelbrokers.co.nz/kaygregan

BUILDER

Keith the Builder LBP

Need something done?
For maintenance, decking, fencing, repairs, interior work and all enquiries

PHONE FOR FREE QUOTE
Keith phone 0272 262 039

ELECTRICAL

For All Your Electrical Needs

Electrical Laser
"Totally Dependable"

Now Open In A Second Location
Introducing Laser Electrical Waihi

WAIHI 07 863 7746 | WANGAMATA 07 865 9309
waihi@laserelectrical.co.nz | whangamata@laserelectrical.co.nz
40B Kenny Street | 100 Lindsay Road

Only the BEST TRADIES will do! Use Locals... For Locals... Support Locals!

KITCHENS

McBeth Rd Orchard Joinery

Affordable joinery

Kitchens new or upgraded
Laundries & bathrooms
Wardrobes & storage units
Free estimates

Tony & Nicky Ball - 027 229 2255
Whangamata

BUTCHER

MEAT AT THE BEACH

Winter Warmers!

Casserole & stewing steaks, Oxtails,
Bacon bones, Swiss rolls and so much more!
get our Whanga Streaky Bacon & Ham on the Bone today!

601 PORT ROAD, WHANGAMATA P. 07 865 7241
MON-FRI 8.30AM-5PM • SAT 8.30AM-3PM

RENTAL PROPERTY MANAGER

PGG Wrightson Real Estate

FRIENDLY. LOCAL. RELIABLE.

RENTAL PROPERTY MANAGER - WAIHI

Call today! **Julie Cunningham**
027 549 2427

pggwre.co.nz | PGG Wrightson Real Estate Limited,
licensed under the REAA 2008.

TREE & PROPERTY SERVICES



Development Clear-outs •
Tree Services •
Tree Removal •
Driveway / Patio /
Pathway Cleaning •
House Washing •

RESIDENTIAL &
COMMERCIAL

210 Waitekauri Road
Waihi

022 195 3980 | dylanpoulter30@gmail.com

FLOORING

Owens Flooring

Flooring Sales and Installation FREE MEASURE & QUOTATION

Carpet, Vinyl, Wood & Laminate Flooring
SHOWROOM: 5/57 Wilson Road, Waihi Beach
Open 8.30am-4.00pm Monday to Friday
Saturdays by Appointment

Phone: 027 233 7277 | 07 863 5723
sales@owensflooring.co.nz owensflooring.co.nz

PODIATRY

Pedicare Services

Professional Foot Care

Alison Walkington
Registered Nurse

Home visits by
appointment

Mobile 027 663 2320 or
email alison.c.walkington@gmail.com

PEST CONTROL



Say goodbye to unwanted pests -
spiders, ants, wasps, cockroaches,
rodents & more!

We offer a safe, effective pest
management solution tailored to suit
your needs.

Contact us today for a pest-free home
or business. Locally owned & operated.

STEPHANIE FRITH - QUALIFIED TECHNICIAN
pestpros@outlook.co.nz | 027 3211 796 | www.pestpros.co.nz
Whangamata & Surrounds
A member of Pest Management Association of New Zealand

ELECTRICIAN

PITCHER ELECTRICAL



YOUR TRUSTED
MASTER ELECTRICIAN
working in Whangamata,
Opoutere, Onemana and
Whiritoa

RESIDENTIAL AND
COMMERCIAL SERVICES

TONY PITCHER 0274 589 573

WINDOW CLEANING



Your
ecofriendly
window
cleaning
service.

Mike Horton
info@purenclean.co.nz

M 021 501 324
www.purenclean.co.nz

HEAT PUMPS



We Sell and Service all Major Brands

Your heat pump specialist
On site marine & commercial refrigeration

Call today for a hassle-free quote
027 933 8599
www.reefrefrigeration.co.nz

ROOFING



Residential
re roofs &
new roofs

Spouting

Cladding

Maintenance
& re screws

Rikki Daysh, Owner/Operator
022 408 8424
rikkisroofing@gmail.com

PLUMBER




FOR ALL YOUR GAS-FITTING, PLUMBING,
DRAINAGE & ROOFING REQUIREMENTS

Registered craftsman & member
of Master Plumbers

M. 0274 714 869 E. office@choatsplumbing.co.nz

WINDSCREEN REPAIRS



For all your
windscreen
needs!

021 617 664
secureglassltd.co.nz

Windscreens

Windscreens

Windscreens

Windscreens

MONDAYS:
RSA car park, Whangamata

TUESDAYS:
Fresh Choice car park, Waihi

THURSDAYS:
Tairua Community Hall, Tairua

FRIDAYS:
Goldfields car park, Thames

ADVERTISING

Whangamata & Waihi NEWS

By Locals, For Locals,
About Locals! Home delivered.
Call Jennie 021 0232 1661.



Use Only the Best Services in our Community!

Use Locals... For Locals... Support Locals!

ELECTRICIAN / DOG GROOMER



Rusty Sparks
EVERYTHING
ELECTRICAL
Residential, Commercial,
Data, Alarms
021 800 017
admin@rustysparks.nz



**PIMPED
PUPS
GROOM
ROOM**
021 850 017
WHANGAMATA

ARBORIST & FIREWOOD



SHORT BACK 'N' SIDES LTD
Arboricultural Contractors

TREE PROBLEMS?
Dismantle, pruning, removal, stump grinding. BIG or SMALL – we do them ALL!
0274 390 367
www.shortbacknsides.co.nz

FIREWOOD
Available all year round. Smoking chunks or dust, kindling, bagged wood. Delivery available or pick up on Fridays from 15 Dean Cres, Waihi. Gold Card discounts. Also 100s of native and exotic milled slab timber, garden mulch, smoking wood.
0274 390 367 or our firewood hotline 022 043 1862



BUILDER



**RESIDENTIAL
SERVICES**
LBP Builder / Renovation Specialist
07 865 6555 / 027 238 1659
skfrs@xtra.co.nz

BINS

**Skip Bins, Wheelie Bins,
Front Load Bins**

Contact us today!



**smart
environmental**

0800 4 MY BIN - www.smartbins.co.nz
Proudly 100% Kiwi owned

We can help!


BOARDING KENNEL / CATTERY



**SPOT
X**
BOARDING KENNELS
AND CATTERY

Quality care and facilities in a rural setting
Office hours: 9am-12 noon and 3-5pm daily
INSPECTION WELCOME
Ph 07 865 8242 or 027 624 3890
Annette Gillatt
4km south of Whangamata on the main road

REFRIGERATION & AIR CON



**TIDELINE
REFRIGERATION**
WHANGAMATA

* HEAT PUMPS * REFRIGERATION
* AIR CONDITIONING * VENTILATION

SERVICING IN THE COROMANDEL AREA
0272121994 - 0277251820
TIDELINEREFRIGERATION@GMAIL.COM
WWW.TIDELINEREFRIGERATION.COM

TREE SPECIALIST



- Tree felling & pruning
- Hedge trimming
- Stump grinding
- Fully insured
- Qualified arborist

TREECARE WHANGAMATA LTD
Contact Ben 021 827 355
treecarewhangamata@gmail.com

LAWYERS

**USSHER
LAWYERS**

- SINCE 2007 -

We can help with all of your general legal needs

- Conveyancing if you are buying or selling property
- Sale and purchase of business assets • Commercial leasing
- Relationship property • Trusts • Wills • Enduring powers of attorney

www.ussherlawyers.co.nz | Phone **07 865 8824**
We've moved – now at **123 Lindsay Rd, Whangamata**

WARDROBES



**WARDROBES
DIRECT**

Steve Parkinson
Central, East & South
021 0733 100
steve@wardrobesdirect.co.nz
**ALSO SERVICING
WHANGAMATA**
www.wardrobesdirect.co.nz

Showroom
and office:
175 Marua Rd
Mt Wellington

LAUNDRY

WHANGA LAUNDROMAT



"The only locally owned & operated laundromat in town!"
OPEN 24 HOURS - 7 DAYS A WEEK
CASEMENT RD, WHANGAMATA (OPPOSITE WAITOMO FUEL)

SCAFFOLDING



**WHANGAMATA
SCAFFOLDING**

- Mobile scaffolding
- Roof edge protection
- Construction scaffold

Servicing Whangamata
and surrounding areas

Please ring **022 076 0160** or
email **whangamatascaffolding@gmail.com**
102 Lindsay Road, Whangamata Est 2014

TYRE & BATTERY SERVICES



**WHANGAMATA
TYRE & BATTERY**

Car tyres / Wheel alignment
4WD tyres / Tyre repair
Wheel balance
Small implement tyres
Batteries - car & marine

KUMHOTYRES 7
Phone Simon
865 7698

CHALLENGE  Cnr Port & Ocean Rd,
Whangamata
www.challenge.net.nz

WINDOW & DOOR SERVICES



**WHANGAMATA
WINDOW & DOOR
SERVICES**

Bryce Hall
M. 027 282 2057
Ph. 865 9714

Reglaze Repairs Maintenance
Retro Fit Double Glaze

whangamatawindowdoorservices@xtra.co.nz

HOME SERVICES



YourLocal
NZ's Trusted Home Services

Avi@yourlocal.nz • www.yourlocal.nz • 022 534 5478

We specialise in

- Exterior house wash, windows, driveways, patios, decks, fences & roofs • Commercial, residential, rural, new builds & painters prep • Pests treatment (fumigation)
- Rodents & wasps • Chimney sweeping • Roof treatments

BUSINESS FRANCHISE FOR SALE

We cover Coromandel, Thames, Waihi, Waihi Beach, Whitianga, Whangamata

1		2		3		4		5		6		7
8								9				
10								11				
12		13						14	15			
17				18				19		20		21
22								23				
24								25				

1. Gambling (7)
5. Accumulate (5)
8. Relating to sight (7)
9. Premature (5)
10. Lustre (5)
11. Inspect (7)
12. Sprinted (6)
14. Events (6)
17. Swagger, boastfulness (7)
19. Observe (5)
22. Hold on (5)
23. Pirate (7)
24. Wipe out (5)
25. Enigma (7)

1. Tones (5)
2. Payment to the church (5)
3. Infuriate (7)
4. Throat (6)
5. Stadium (5)
6. Charge in court (7)
7. Timidity (7)
12. Disastrous,
embarrassing failure (7)
13. Staying power (7)
15. Forward (7)
16. Internet business (3,3)
18. Quarrel (5)
20. Track down (5)
21. Durable (5)

All puzzles © The Puzzle Company

W98	1	2	3	4	5	6	7	8	9	10	11	12	13	14	15	16	17	18	19	20	21	22	23	24	25	26	27	28	29	30	31	32	33	34	35	36	37	38	39	40	41	42	43	44	45	46	47	48	49	50	51	52	53	54	55	56	57	58	59	60	61	62	63	64	65	66	67	68	69	70	71	72	73	74	75	76	77	78	79	80	81	82	83	84	85	86	87	88	89	90	91	92	93	94	95	96	97	98	99	100	101	102	103	104	105	106	107	108	109	110	111	112	113	114	115	116	117	118	119	120	121	122	123	124	125	126	127	128	129	130	131	132	133	134	135	136	137	138	139	140	141	142	143	144	145	146	147	148	149	150	151	152	153	154	155	156	157	158	159	160	161	162	163	164	165	166	167	168	169	170	171	172	173	174	175	176	177	178	179	180	181	182	183	184	185	186	187	188	189	190	191	192	193	194	195	196	197	198	199	200	201	202	203	204	205	206	207	208	209	210	211	212	213	214	215	216	217	218	219	220	221	222	223	224	225	226	227	228	229	230	231	232	233	234	235	236	237	238	239	240	241	242	243	244	245	246	247	248	249	250	251	252	253	254	255	256	257	258	259	260	261	262	263	264	265	266	267	268	269	270	271	272	273	274	275	276	277	278	279	280	281	282	283	284	285	286	287	288	289	290	291	292	293	294	295	296	297	298	299	300	301	302	303	304	305	306	307	308	309	310	311	312	313	314	315	316	317	318	319	320	321	322	323	324	325	326	327	328	329	330	331	332	333	334	335	336	337	338	339	340	341	342	343	344	345	346	347	348	349	350	351	352	353	354	355	356	357	358	359	360	361	362	363	364	365	366	367	368	369	370	371	372	373	374	375	376	377	378	379	380	381	382	383	384	385	386	387	388	389	390	391	392	393	394	395	396	397	398	399	400	401	402	403	404	405	406	407	408	409	410	411	412	413	414	415	416	417	418	419	420	421	422	423	424	425	426	427	428	429	430	431	432	433	434	435	436	437	438	439	440	441	442	443	444	445	446	447	448	449	450	451	452	453	454	455	456	457	458	459	460	461	462	463	464	465	466	467	468	469	470	471	472	473	474	475	476	477	478	479	480	481	482	483	484	485	486	487	488	489	490	491	492	493	494	495	496	497	498	499	500	501	502	503	504	505	506	507	508	509	510	511	512	513	514	515	516	517	518	519	520	521	522	523	5
-----	---	---	---	---	---	---	---	---	---	----	----	----	----	----	----	----	----	----	----	----	----	----	----	----	----	----	----	----	----	----	----	----	----	----	----	----	----	----	----	----	----	----	----	----	----	----	----	----	----	----	----	----	----	----	----	----	----	----	----	----	----	----	----	----	----	----	----	----	----	----	----	----	----	----	----	----	----	----	----	----	----	----	----	----	----	----	----	----	----	----	----	----	----	----	----	----	----	----	----	-----	-----	-----	-----	-----	-----	-----	-----	-----	-----	-----	-----	-----	-----	-----	-----	-----	-----	-----	-----	-----	-----	-----	-----	-----	-----	-----	-----	-----	-----	-----	-----	-----	-----	-----	-----	-----	-----	-----	-----	-----	-----	-----	-----	-----	-----	-----	-----	-----	-----	-----	-----	-----	-----	-----	-----	-----	-----	-----	-----	-----	-----	-----	-----	-----	-----	-----	-----	-----	-----	-----	-----	-----	-----	-----	-----	-----	-----	-----	-----	-----	-----	-----	-----	-----	-----	-----	-----	-----	-----	-----	-----	-----	-----	-----	-----	-----	-----	-----	-----	-----	-----	-----	-----	-----	-----	-----	-----	-----	-----	-----	-----	-----	-----	-----	-----	-----	-----	-----	-----	-----	-----	-----	-----	-----	-----	-----	-----	-----	-----	-----	-----	-----	-----	-----	-----	-----	-----	-----	-----	-----	-----	-----	-----	-----	-----	-----	-----	-----	-----	-----	-----	-----	-----	-----	-----	-----	-----	-----	-----	-----	-----	-----	-----	-----	-----	-----	-----	-----	-----	-----	-----	-----	-----	-----	-----	-----	-----	-----	-----	-----	-----	-----	-----	-----	-----	-----	-----	-----	-----	-----	-----	-----	-----	-----	-----	-----	-----	-----	-----	-----	-----	-----	-----	-----	-----	-----	-----	-----	-----	-----	-----	-----	-----	-----	-----	-----	-----	-----	-----	-----	-----	-----	-----	-----	-----	-----	-----	-----	-----	-----	-----	-----	-----	-----	-----	-----	-----	-----	-----	-----	-----	-----	-----	-----	-----	-----	-----	-----	-----	-----	-----	-----	-----	-----	-----	-----	-----	-----	-----	-----	-----	-----	-----	-----	-----	-----	-----	-----	-----	-----	-----	-----	-----	-----	-----	-----	-----	-----	-----	-----	-----	-----	-----	-----	-----	-----	-----	-----	-----	-----	-----	-----	-----	-----	-----	-----	-----	-----	-----	-----	-----	-----	-----	-----	-----	-----	-----	-----	-----	-----	-----	-----	-----	-----	-----	-----	-----	-----	-----	-----	-----	-----	-----	-----	-----	-----	-----	-----	-----	-----	-----	-----	-----	-----	-----	-----	-----	-----	-----	-----	-----	-----	-----	-----	-----	-----	-----	-----	-----	-----	-----	-----	-----	-----	-----	-----	-----	-----	-----	-----	-----	-----	-----	-----	-----	-----	-----	-----	-----	-----	-----	-----	-----	-----	-----	-----	-----	-----	-----	-----	-----	-----	-----	-----	-----	-----	-----	-----	-----	-----	-----	-----	-----	-----	-----	-----	-----	-----	-----	-----	-----	-----	-----	-----	-----	-----	-----	-----	-----	-----	-----	-----	-----	-----	-----	-----	-----	-----	-----	-----	-----	-----	-----	---

¹⁴	Q	¹⁵	E	¹⁶	J	¹⁷	M	¹⁸	K	¹⁹	D	²⁰	A	²¹	B	²²	O	²³	F	²⁴	S	²⁵	Z	²⁶	X
¹	T	²	G	³	U	⁴	Y	⁵	L	⁶	C	⁷	V	⁸	W	⁹	I	¹⁰	N	¹¹	R	¹²	P	¹³	H

CROSS: 1. Weathervane, 9. Carpet sweeper, 10. Naif, 11. Trespass, 13. Regule, 14. Measly, 17. Castaway, 19. Camp, 22. United Kingdom, 23. Affection.

OWN: 2. Earning, 3. Tees, 4. Exsert, 5. Chessmen, 6. Copra, 7. Scan, 8. Grisly, 12. Sudaeness, 13. Recoup, 15. Stand to, 16. Basket, 18. Stiff, 19. Pomp, 21. Knif

			3			1	8	
	8			1	2	3		
								6
		9	1			8	7	2
		8		9		6		
6	5	2			7	9		
7								
		4	9	5			3	
	6	3			4			

W267

EASY

1				9	8			6
3		4	7			2		
			5					
	1		4					
5		6				1		4
					7		8	
					1			
		8			3	5		7
9			8	5				2

W268

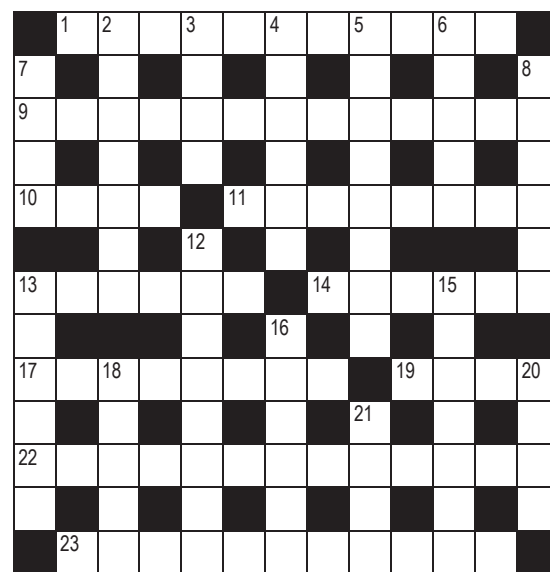
HARDER

21		6		21				24		11		24	
15	10	20	17	15	5			24	14	3	15	20	5
19		11		5		15		3		5		20	
2	22	21	21	5	15	24		15	26	20	6	1	
22		9		24		12		20		26		15	
8	20	19	24		23	5	3	18	15				
10		15		6		20		4		16			12
			19	22	8	10	4		16	15	15	11	
19		24		10		20		24		20		3	
20	25	1	15	6		19	20	8	19	5	L	E	19
25		22		20		15		22		22		9	
15	7	22	5	7	15		23	22	11	3	17	24	
19		19		15				12		24		13	

1	2	3	4	5	6	7	8	9	10	11	12	13
				L								
14	15	16	17	18	19	20	21	22	23	24	25	26
	E				D							

1. Catcher woke up with a bird on the roof (11)
9. The favourite vehicle brush? (6,7)
10. Greenhorn found in Argentina, if you look hard enough (4)
11. Illegally encroach with a spring in the locks (8)
13. Lee! Rug may need sticking again (6)
14. Sorts out solar system. Pathetic! (6)
17. He let the boat go from the wharf (8)
19. Prime minister returns from California for tenting holiday (4)
22. Dunedin got Kim from Britain (6,7)
23. A display of pretence (11)

2. Student left education and is making a living (7)
3. We heard you can have someone on about the round supports (4)
4. Strange looking trees get Ray to stick out (6)
5. Board members (8)
6. Product that comes from Puerto Rico, practically (5)
7. Search around the cans (4)
8. Netless restyling looks gruesome (6)
12. Danseuse maybe of this nationality (8)
13. Recover from the sapper's blow (6)
15. We go downstate maybe to take up position for action (5,2)



16. Have a flutter about the question of container (6)
18. A late sort of drink? (5)
20. With ceremony the minister gets to work back (4)
21. Weave to get the sound of needles back (4)

The image is a collage of five promotional posters for a pub. Each poster has a distinct color and layout. The first poster, 'Pasta Thursday', is blue and features a grid of pasta dishes. The second, 'Friday Shout', is purple and shows a variety of food and drink options. The third, 'Shellfish Saturday', is dark blue and focuses on mussels. The fourth, 'Give a Schnitz Sunday', is black and white and promotes a live music event. The fifth, '\$1 Wings Wednesday', is light brown and features images of wings. Each poster includes the pub's name, 'CRAFTHOUSE WHANGA', and its website, 'manager@crafthousewhanga.co.nz'. The posters are arranged in a slightly overlapping manner, creating a vibrant and inviting visual.

\$1 WINGS WEDNESDAY

from
4:30pm
until sold
out

FULL SIZE BUFFALO WINGS!!
\$1 PER WING!!

Dine in
only

conditions apply

PASTA THURSDAY

choose one of our pastas
and grab a pint off tap or
glass of haus wine for only

\$23.00

manager@crafthousewhanga.co.nz

FRIDAY SHOUT

DINE IN OR TAKE AWAY

manager@crafthousewhanga.co.nz

Conditions apply

Shellfish SATURDAY

\$25

Grab 1kg of NZ greenlipped
mussels in a Thai curry
sauce w garlic bread
+ a pint of tap beer or
glass of house wine

CONDITIONS APPLY

GIVE A SCHNITZ SUNDAY

Choose from chicken
or pork schnitzel,
slaw, gravy, fries &
a bevvy for only
\$20.00

BOOK YOUR
TABLE NOW

Live Music
w Mark
& Trace

in the garden
last Sunday of
every month!
■ 4pm - 7pm
■ Aug 31st

LIVE MUSIC W MARK & TRACE AUG 31ST FROM 4PM TO 7PM - PLEASE BOOK YOUR TABLE AT manager@crafthauswhanga.co.nz

CRAFT HAUS

Gastropub Est. 2022

711 Port Road, Whangamata
@crafthauswhanga - www.crafthauswhanga.co.nz
07 865 6300