

PARADISE COAST

BROUGHT TO YOU BY

Whangamata NEWS

ISSUE 17 - 13 MARCH, 2020

BY LOCALS. FOR LOCALS. ABOUT LOCALS.

FREE
COPY

PLEASE
TAKE ONE!

*Marina
is clean,
green and a
champion!*

Photo details: page 2

STORY: PAGE 13

Publishing
TWICE
a month on
Fridays!



LIKE US!

WE WANT YOUR CONTRIBUTIONS!

EMAIL WHANGAMATANNEWS@GMAIL.COM

WWW.WHANGAMATANNEWS.NZ

EDITORIAL: LESLEY - 021 664 784

MEDIA SALES: JENNIE - 021 0232 1661

SUPPORT **Whangamata NEWS** We are LOCAL, focused & invested in our town!

Welcome to the March 2020 edition of *Whangamata* NEWS

– a monthly magazine By Locals, For Locals, About Locals



Whangamata News

EDITOR
Lesley Staniland
Ph 021 664 784
wordy1@gmail.com

SALES EXECUTIVE
Jennie Black
Ph 021 0232 1661
jennieablack@gmail.com

PHOTOGRAPHERS
Peter West
Ph 027 291 2703
Peterwest463@gmail.com

Lesley Staniland
Ph 021 664 784
wordy1@gmail.com

ART DIRECTOR
Anna Gledhill

All content featured in *Whangamata* NEWS Limited is subject to copyright in its entirety and may not be reproduced in any form without permission from the Publisher. Any material supplied for publication is at the submitter's risk. All information is believed to be true by the Publisher at the time of printing. Views expressed in *Whangamata* NEWS Limited are not necessarily those of the Publisher.

www.whangamatanews.nz

FRONT COVER
Marina manager Susan Amos and marina staff are absolutely chuffed about their latest achievement.

REGISTERED OFFICE
119 Hetherington Rd, Whangamata 3620

POSTAL ADDRESS
PO Box 204, Whangamata 3643
Printed by Inkwise NZ
Published by *Whangamata* NEWS Limited

Emergency numbers

For all genuine emergencies requiring Whangamata St John Ambulance, Fire Brigade, Coastguard, Surf Life Saving or Police, **DIAL 111 immediately.**

Other useful numbers:

MENTAL HEALTH HELPLINE
1737

WHANGAMATA SURF CLUB
07 865 8401

WHIRITOA SURF CLUB
07 865 9045

ONEMANA SURF CLUB
Laurie 021 2666 114

WHANGAMATA POLICE
07 865 0300

ST JOHN AMBULANCE
07 865 9011

COROVETS - VET CLINIC
07 865 8109

WHANGAMATA MEDICAL CENTRE
07 865 8032

COASTGUARD
07 865 8800

HARBOURMASTER
021 594 563

THAMES-COROMANDEL DISTRICT COUNCIL, WGM
07 865 0060

INDEX

- 3 Letters
- 4 Powerco lights up
- 5 Menzshed and Whanga Theatre
- 6 Holidays are fun
- 7 It's all about community
- 8 Beach Hop is coming!
- 11 Old mates reminisce
- 12 Blast from the past
- 13 Another award for our marina
- 14 From our MP
- 15 Farewell to our Rangi
- 16 Our Community Gives a Damn
- 18 Everest challenge
- 19 Waka Ama stands tall
- 20 Sports results
- 28 Puzzles

We welcome your letters, articles, photos, news tips and advertising enquiries.

- We ask that articles be no more than 250 words although exceptions can be made.
- Photos should be at least 300dpi and in focus.
- Notices of upcoming events, sports results and club notices must be as brief as possible.

For editorial or photographic matters, phone Lesley on 021 664 784 or email whangamatanews@gmail.com

For advertising & advertorial information, phone Jennie on 021 0232 1661 or email jennieablack@gmail.com

fusion
LANDSCAPE DESIGN
Creating Your Sense Of Place

Lynn Cairney Dip. LDesign, Fusion Landscape Design Ltd Registered Master Landscaper – Landscape Ind. Assoc. of NZ

Lynn Cairney is passionate about design, the landscape, her reputation and the landscaping industry.

Fusion Landscape Design is an award-winning company, with offices in both Whangamata and Auckland, who prides itself in providing professional, quality design and landscaping services.

Phone 021 123 5650
www.fusionlandscapedesign.co.nz and fusionlandscapedesign.houzz.co.nz

REGISTERED MASTER LANDSCAPERS

SLIPPER SUPERETTE

Whangamata

Welcome Shoppers!
STOCK UP WITH ALL YOUR NEEDS
The shop is filled with everything you need:
Groceries, drinks, ice creams, milk shakes, everything for the holidays...

- Frosty Boy Soft Serve in store NOW and all summer long!
- Tip Top scoop ice cream
- Killinchy Gold scoop ice cream
- Nutra Food spices
- Ecomist - All Insects Killer
- Party ice
- Fish bait

For all your grocery needs plus snow freeze ice cream

712 PORT RD • 07 865 8820 • OPEN 7 DAYS 7AM-8PM

LIKE US ON FACEBOOK

Scott Simpson

MP for Coromandel

Thames 07 868 3529
Kaiaua 09 232 2588
Katikati 07 549 4312
mpcoromandel@parliament.govt.nz
scottsimpson.co.nz

National
Funded by the Parliamentary Service. Authorised by Scott Simpson MP 614 Pollen St Thames.



Dementia unit – we MUST act now!

Re: Dementia (Article WhangamataNEWS,Issue 15, Feb 14)

I fully agree that the issue of a secure dementia unit in Whangamata will be, in the near future, of great importance.

The ever increasing population of Whangamata, especially as a retirement town, dictates that the authorities that will be involved, in site procurement, planning, and building, have no time to waste.

It will take years, and the cost will increase for each year of procrastination.

The problems of living alone, travelling, and cost, are all very time consuming and very stressful, as mentioned in the WhangamataNEWS.

But all pales into relative insignificance compared with the stress of living with a loved one who is inevitably deteriorating into the abyss of dementia, an alien and deteriorating situation from which there will be no return.

The initial anguish of not knowing why there is a growing and deteriorating change of character of a loved one, and not having even the slightest understanding of the situation or of dementia, the initial reaction is to try and look after your loved one, and to try and pacify, help, persuade, and do everything to return to ‘normality’ amid extreme mood swings and physical abuse.

There does not seem to be anywhere local, available for advice on serious dementia situations.

I carried this anguish and stress with me for one whole year, and endured this continually deteriorating situation, to an otherwise happy marriage that had lasted for 61 years, before it became unbearable and I was forced to seek further help.

There must be many couples who experience the domestic situation of self-mental torture of trying to cope and understand, and with complete ignorance of the whole subject of dementia and what that brings to a couple who have been happily married for many years, anyone would have a desperate desire to return to normality. The experience of that year will never leave me.

Ivor Bray
WHANGAMATA

Boardwalk survey – tell us the truth

‘Fake News’, until recently something I associated with the USA – but maybe it’s alive here in little old Whangamata.

I attended the Whangamata Community Board meeting on 18th February to make a submission about the proposed boardwalk through some of our dunes.

At this meeting the council spokesperson for the boardwalk claimed that, of the several hundred responses to their Boardwalk Survey, 60 per cent

were in favour and 40 per cent against.

Yet the only two questions in the survey were – which alignment you preferred and to comment regarding accessways.

There was no option for those opposing the boardwalk altogether.

Nearly 50 per cent of respondents felt so strongly regarding this project that they used the comment section of the survey to voice their concern.

Council accepting that this means all other responses were in favour is flawed logic.

It seems the council is committed to installing a boardwalk and that the only decision to be made is to where it goes.

I also note the mayor was fed this same ‘Fake News’ as, on local radio, she stated that a majority supported the project and quoted the 60/40 figures.

At the Community Board meeting I attended, 93 per cent of verbal submissions made by the public were against the boardwalk and 7 per cent supported it.

Which figures tell the truth? Surely it is time our Community Board did some more work to identify the community’s (both residents and holiday homeowners) actual view.

During meeting discussion on the boardwalk, the impression was that most of the Community Board members supported installing the boardwalk.

They seemed supportive of the

council continuing to fund the proposed project – that I suspect the majority of Whangamata ratepayers do not want; particularly now we are faced with a significant rate increase.

I believe our community would like our Community Board to advocate for our interests and stand up to council staff.

TCDC staff work hard but are not intimately in touch with the views of each uniquely different community within the wider TCDC area.

We are a diverse group of settlements. What’s good for Thames is not necessarily good for Whangamata, and it is the responsibility of the Community Board to ascertain and support community need – not their own agenda.

Bob Storey
(The Silent Generation)
WHANGAMATA

Letters

Whangamata NEWS welcomes your letters.

Your letters must be no longer than **250 words** and must be signed (no nom de plumes please).

Whangamata NEWS reserves the right to edit, or to not print, submitted letters.





www.tangosshoes.nz
Whitianga 07 866 5947
Whangamata 07 865 8088





SALE
STORE
WIDE

COASTAL
TRENDS
GIFTS & HOMEWARES

SOUTH END of PORT ROAD, WHANGAMATA (next to Smoky Pallet)
(07) 865 7080 | coastaltrendswhangamata.co.nz

New facility to ease power cut woes

Powerco's new multi-million dollar grid sized battery was officially opened in Whangamata at the end of February.

Coromandel MP Scott Simpson welcomed the option for better power backup in the town. He is pictured with Cr Terry Walker who unveiled the plaque at the site.

The Battery Energy Storage System (BESS), built over the past few months at Powerco's substation just south of Whangamata, is a large-scale dedicated battery and bespoke generator with state of the art switching system to provide standby power to the CBD.

Powerco General Manager Asset Strategy and Investment, Ryno Verster said Powerco understood that Whangamata needed a more secure power supply and the solution was a first for Powerco and a first for New Zealand.

'As far as I know this is the first time a large grid scale battery (2 Megawatt, 2 Megawatt-hour) has been used in this manner in New Zealand, to provide standby power to a community should there be a complete loss of electricity supply.'

Whangamata is supplied by a single 33,000 Volt line running through some rugged and environmentally sensitive terrain from Waihi.

'The line between Waihi and Whangamata has recently



undergone extensive maintenance and refurbishment,' Mr Verster said.

'However, due to the rugged terrain and the severe weather the line remains subject to a high level of risk. We believe the BESS will provide a step change in our network performance for the CBD,' he said.

'When damage occurs to that line all power is cut to more than 5700 properties.

'The BESS will automatically fire up if there is a power cut in the bulk supply to Whangamata and will power up around 1000 properties in and around the CBD - essentially maintaining supply to the commercial heart of the town,'

he said.

'To achieve this, the Whangamata distribution network is automatically reconfigured into an islanded network.

'When the main supply is restored, the network reverts to its normal operating state.

'We have talked to the community extensively,' Mr Verster said.

'We understand that many of the businesses in Whangamata generate 80 - 90 percent of their income over the holiday season and so if we can minimise their risk and duration of power cuts, particularly over those periods, we can minimise the adverse economic

impact to the area and community.'

The battery is capable of supplying the CBD, during peak business hours, for a period of 1-2 hours, during which time normal supply outages would often be restored.

'For longer interruptions, when paired with the generator, we will be able to maintain supply indefinitely.

'This is state of the art technology,' he said. "BESS has a range of possible applications we will investigate further in the future, but the primary benefit to customers will be a fast-acting back up power supply to the central business district.

'We are also excited about exploring further opportunities and benefits that could be derived from the BESS for the Whangamata community.

'As an example of our future plans, we envisage cooperating with the community on schemes that could extend the reach of the BESS to larger parts of town, by managing demand when the main supply is interrupted.

'There is also, potentially, scope to work with local customers who generate electricity from solar PV systems, to store their excess daytime generation in the battery and draw back electricity from the BESS after hours.'

On the move?

Either selling or buying,
make the right choice...

Become my priority!

Carol Hatton AREINZ
Licensed Consultant REA 2008
0275 743 758
carol@corofirstnat.co.nz



Paradise Coast
Pacific Coast Realty Ltd
501a Port Rd
Whangamata
Licensed REA 2008

Cool prizes for young talent



Three young Whangamata Area School students went home with big smiles on their faces recently after winning cool prizes in Powerco's Sparky Colouring Competition.

Advertised in two issues of Whangamata NEWS in January, the competition was run in conjunction with the official opening of Powerco's battery backup system.

Olive Gillingham (above right) won an Apple iPad in the 6-years and under category and Delilah te Brake (above left) also won an iPad in the 7 to 10 years category.

In second place was Ryley Cunningham, pictured right, who took home a backpack prize pack, including a bluetooth speaker, drink bottle, hat and beach towel.

The prizes were presented by Kylea Grayling, Gabriel Lim and Vijay Hirani from Powerco, pictured above. Kylea said they received 'hundreds and hundreds and hundreds' of entries.



Whanga-based drama attracting heaps of interest

A keen group of 24 people of all ages attended the auditions for the Whangamata Theatre Society production *Our Special Place, South of the Bombays*, held at Cornerstone House last month.

They ranged in age from seven to 70. Several other people had shown interest previously but were unable to attend auditions.

The auditions began with a mass dance taught by Sarah Christensen who is choosing music and choreographing the dances in the show.

Following that everyone read sections of the script and parts were allocated.

The cast met on March 3 for the first read through of the script, set mostly in Whangamata.

Sections of the play were rewritten to accommodate the ages of people who auditioned matching the ages of characters.

A large core cast of about a dozen are supported by an ensemble cast who play various people in Whangamata.

Rehearsals are now under way. The set has also been designed



Zoe Alchin and Kaitlyn Thompson who play Amber and Zara.

and Director Aisne Edwards approached Rob Boston of Menz Shed to assist with construction.

He has made a scale model of the set.

Aisne, Rob, Sarah, John Mac and Peter met this week in the auditorium to decide where the set would fit before construction begins.

The show is in rehearsal until the June 15 when the it will open for six performances.

Tickets will be available from Whanga Books closer to the time.

Aisne is looking for back stage helpers so please contact her on aisne@xtra.co.nz or Robyn on nandrpilcher@gmail.com

Storage space at a premium for Menzshed



HELP!

Whangamata Menzshed has more than 70 members – men and women – working on various projects from three shipping containers at Whangamata Area School.

But they have a problem – put the regular attendees together, along with a heap of timber, metals, nails, screws etc, and there's just no room for anyone to move.

So, the group is now looking for somewhere to store all the timber and metal – most of it donated by individuals and businesses.

Spokesman John Hares (pictured far right) said if someone had a half – or a whole – garage sitting idle, they would dearly love to be able to use it for storage.

‘Two half garages or a whole one would be great – and hopefully, not too far away from each other.

‘We’re a non-profit organisation so we wouldn’t be able to pay for storage but we’re just hoping someone can come forward and offer us some storage space.

‘The offer of a spare storage shed anywhere would also be welcome,’ John said.

Contact John: 07 865 6007.

STACK EM' IN for Beach Hop!

'Oscar' Bunk Beds
Was \$795
NOW \$695
Mattress extra

'Buddy' Bunk Beds
Was \$695
NOW \$595
Mattress extra

MATTRESS IN A BOX
Single **\$199**
Double for bunks **\$295**

'Sierra' S2 Queen Mattress \$795
NOW \$695
With base \$395
\$1090

'Snooze' Queen HOT DEAL!
\$799
Other sizes available

'Pop Up Bed'
Was \$1495
NOW \$995



419 Port Rd, Whangamata
P. 865 9027 FREE DELIVERY
"You'll be surprised how far we go"

Whangamata
Furniture & Bedding

Help for parents during holidays

The Whangamata Community Services' summer holiday programme brought out the talents of many children.

Programme coordinator Chris Hannah said the programme was designed to cater for local tamariki with the aim of keeping costs down, enabling parents to continue working over the holidays in the knowledge their children were safe, happy and well looked after

Based at Whangamata Area School, Principal Alistair Luke was a keen supporter, allowing the use of a classroom and school facilities.

'I have previously established a 'before and after' school care many years ago in Auckland and the WCST was aware there was a need for a holiday programme in Whangamata which I established and set up last year,' Chris said.

'We catered for a maximum of 30 children, resulting in a wait list some days.

'We have had some amazing positive feedback from parents, the school and the community – and of course the kids.'

On site activities included arts, crafts, sports and games – painting pet rocks, making grassheads, a wacky science day, pulling apart appliances to make recycled creations, a Lego challenge day, talent show etc.

'We even had the Whiritoa fire truck visit on our Water Wars day.

'We provide an assortment of free play activities also – dollshouses, Lego, crafts supplies, board games, sport equipment.

'Our trips included Spikes Lego models in Waihi, Bullswool Farm, Pauanui Mini Golf, and movies in Tauranga.'

Chris said the programme was being assessed for MSD accreditation which would allow eligible families to access WINZ assistance.

The programme will run again in the April/Easter holidays.



MUSIC LINE UP FOR BEACH HOP

WEDNESDAY 25 MARCH	Nick Brightwell	1pm to 4pm
THURSDAY 26 MARCH	Nick Brightwell	1pm to 4pm
FRIDAY 27 MARCH	Bonneville Boys	8.30pm to midnight
SATURDAY 28 MARCH	Bonneville Boys	12.30pm to 4pm
SATURDAY 28 MARCH	Bonneville Boys	8.30pm to midnight

OUR BEACH HOP BUFFET IS SERVING SATURDAY & SUNDAY MORNING 9AM TO 11AM AND SPECIAL BEACH HOP MENUS ARE RUNNING THROUGH THE EVENT!

JOIN US AT THE LINCOLN! RIGHT IN THE HEART OF THE ACTION!



Huge success for Whanga in Hoop Nation tourney

A lot has happened since Labour Weekend last year when Sienna Taikato (below right) and Bridgette Moore (below left) played in the netball Hoop Nation tournament at Mount Maunganui.

The tournament has become a huge tournament with teams from all around New Zealand attending along with some Australian teams, Sienna's mum Shona Taikato said.

'The girls played with their mates from Mercury Bay and they came

second in the competition.

'From this tournament there were selectors looking at players for selection in a Hoop Nation team,' Shona said.

Sienna was lucky enough to be chosen to be in the U18 Hoop Nation team to travel to Melbourne in January.

Due to another player selected but unable to go on tour, Bridgette got the call up.

This then started these 2 young ladies training hard for the next 9 weeks, going on a 3 day camp to Waiouru military camp where they were put through their paces.

They were given a programme to then train until they were leaving on January 21st. They both were also working full-time after exams to help pay for their trip. A big thank you to the Lions Club and the Whangamata community for helping Sienna get to Melbourne.

Once they were in Melbourne they had a few days to get used to the humidity, do some training before the tournament started.

A day out from the tournament Bridgette had an accident during training and was concussed which ruled her out for the whole



tournament. A big loss to the team as Bridgette had been training hard with Sienna over the summer.

The tournament, the biggest in the world, is played in Dandenong.

The girls started the tournament

with a win which built up their confidence as they were down to 8 players making them underdogs.

They played hard, they made the finals but came a great second place in the tournament.



WHANGAMATA

Open 7 Days from 11am

Live shows & entertainment | Anyone can join | Families welcome!

SUN 15 MARCH

ANNUAL BOWLS FUN DAY

From 8.30am

Sponsored by Twentymans Funeral Services

\$20 Entry Fee Lunch included

Open to all RSA Members Bowlers and Non-Bowlers. Enter names on list in RSA Foyer.

WED 25 MARCH

TOUCAN ROCK 'N' ROLL PARADISE



From 6.30pm

THU 26 MARCH

TONY WELLINGTON



From 7pm

SAT 28 MARCH

CAR FAIR

Max Loans Car Fair & Auction 8am-3pm

Che Orton in the carpark from 12 noon to 1.30pm

FRI 27 & SAT 28 MARCH

CHE ORTON BAND



From 7.30pm

SUN 29 MARCH

KEVIN GREAVES & MIDNITE SPECIAL



From 5pm



Activities

Friday Quiz Night

Friday nights 6.30pm (after Jokers Wild)

Raffles

Wednesday, Friday & Saturday nights

Membership Draws

Wednesday, Friday & Saturday nights 6.00-6.30pm

Trev's Jokers Wild

Wednesday, Friday & Saturday 6.30pm

Housie

Tuesdays 7pm, Thursdays 4pm All welcome

Tai Chi Classes

Wednesdays & Thursdays 9am - 10am

Line Dancing

With Rochelle 9.30am - noon



YING'S @ THE RSA

Thai & European cuisine

LUNCH, DINNER & TAKEAWAYS

Everyone welcome

Thai & European Cuisine

OPEN TUESDAY TO SUNDAY



Beach Hop fever begins

With the 2020 Repco Beach Hop taking off in March, owners of classic cars are getting them out of the garage and dusting them off.

Organiser Noddy Watts said there will be roughly an extra 100 cars at this year's Hop, such is its popularity.

'Our opening day for registration on Oct 1st was 40 per cent up on last year with 850 vehicles entered

in the first 20 minutes. It was staggering,' Noddy said.

'We sold out of our "allocated" passes in record time but held back 200 late entries for special cases.'

Up for grabs are the \$65,000 Mustang, a Harley-Davidson motorcycle worth \$26,000 and a T-Bucket valued at \$35,000.

Other prizes include \$10,000 cash and eight TVs.



> MORE PHOTOS ON P10

BEACH BABIES

boutique

KIDS, WOMEN,
GIFTS &
CUTENESS

701 Port Road, Whangamata

f

www.beachbabies.co.nz



EYE STRAIN

Do you have any of the following symptoms using a computer?

Tired eyes

Headaches

Fatigue

Blurred vision

Light sensitivity

We can help.

Visique O'Hagan Vision Care

612 Port Road, Whangamata • Phone 07 865 0007



See the difference

Stunning Mustang top prize for 2020



Thanks to the support of Beach Hop sponsors a stunning 1965 Ford Mustang convertible is the major prize and promo vehicle for Repco Beach Hop 20.

The Mustang has had a quality restoration by the owner who has had the car for 35 years and knows its full history.

As you can see by the trophies pictured with the car, it has won many awards and one of

the highlights is the OEM Ford Tri-Power carb set up with 3x2 barrels.

The car is now in a shipping container and on its way to New Zealand thanks to the fabulous team at Famous Pacific Shipping.

It should be in Auckland in just a few weeks.

We won't be doing much to this car – it doesn't need it!

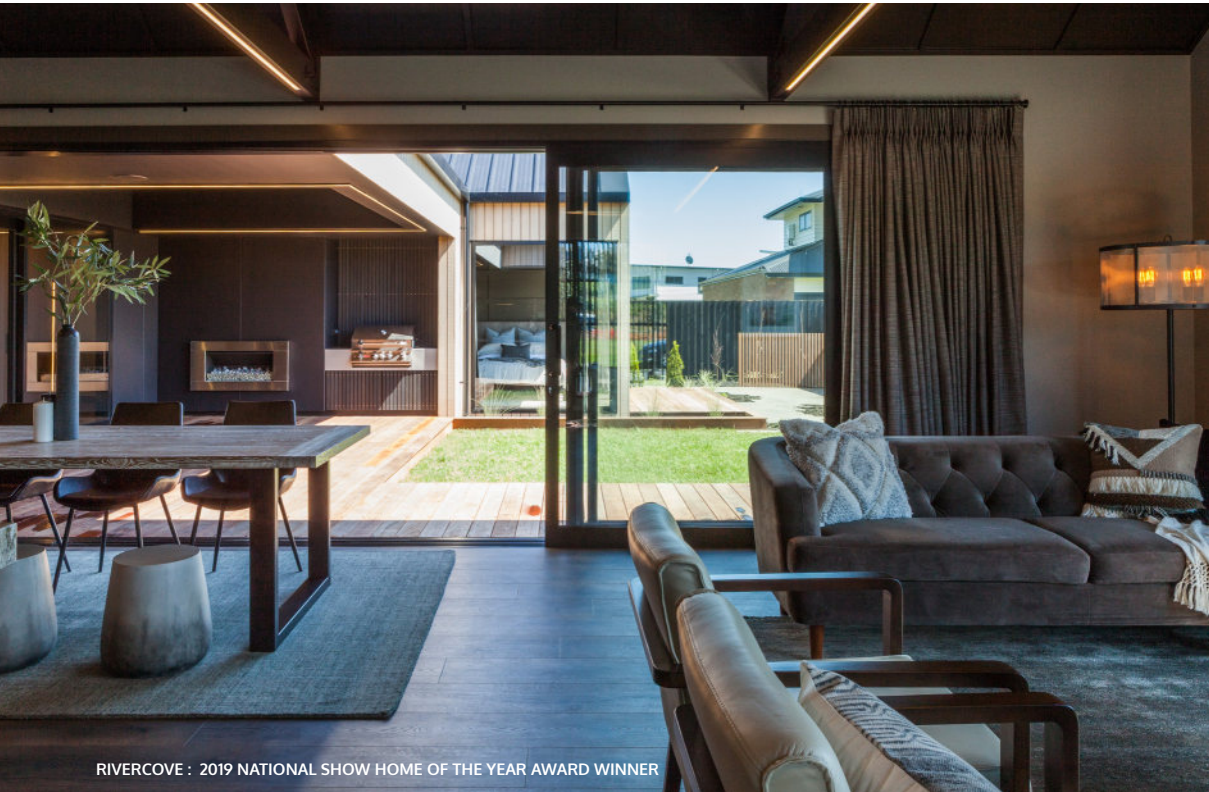
- Noddy Watts, Beach Hop organiser

Tried and trusted bands return

Bands playing in the streets, on the stages and in pubs and clubs are always well attended by Beach Hoppers and as usual we will be seeing those who have proved their popularity in the past.

Here's who you will see at Repco Beach Hop 20:

- Brien & The Rockets From OZ (AUS)
- The Flattrackers (AUS)
- The Strays (AUS)
- Chet O'Connell & the Rock'n'Roll Riot
- Brown Sugar (Rolling Stones Tribute)
- Tim & The Rockets
- Recliner Rockers
- Boom! Boom! Deluxe
- Che Orton Band
- Bonneville Boys
- Al & the Wild Katz
- Gerry Lee
- Bull Kelp Surfers
- Brian Elvis Childs
- Rocking Roller Coasters
- Blaze the Duo
- Brendan Hopping
- Tony Wellington



RIVERCOVE : 2019 NATIONAL SHOW HOME OF THE YEAR AWARD WINNER



Entertain beachside in style

There's only one thing that beats having sand in your toes; it's having a beautiful beach home in which to shake the sand off. At Urban Homes, we build homes that give you the space, freedom, functionality and style to enjoy life at the beach, as it should be.

Incorporating everything that makes beachside living fun, enjoyable and relaxing, our homes make beachside living and entertaining easy. Whether you're looking for a house and land package or a floor plan to build on your existing property, take ownership of your new beachside home today.

Visit urban.co.nz today.



Design Centre, 608 Port Road, Whangamata
Contact Kerry on 027 426 8436 | urban.co.nz



Watch out for these cars... and heaps more > FROM P8



We provide a wide range of services for your Companion Animals:

- 24 Hour Emergency Care
- Health Checks
- Vaccinations
- House Calls
- Puppy Preschool
- Dentistry
- In-House Blood Analysis
- Digital Xray
- Ultrasound
- General & Emergency Surgery
- Orthopaedic Surgery



Tairua Clinic:
1 Wharf Road, Tairua

Whangamata Clinic:
215 Aickin Road, Whangamata

Waihi Clinic:
10 Mueller St, Waihi

0800 267 683
info@corovets.co.nz
www.corovets.co.nz

SUPPORT LOCAL BUSINESS You're supporting a DREAM!

Everyone has a story to tell...

It's interesting what can be discovered about people's lives just from a casual conversation.

Talking to Graham Gerrard, a barman at the RSA recently, we were interrupted by the vivacious, loquacious Jim Green – the unofficial King of Whangamata! – a man with the Whangamata community close to his heart.

It turned out that the two men were old Pakuranga rugby mates from the 1980s.

The pair had many tales to tell – many of them unprintable – about their rugby lives which obviously hold very fond memories for them.

As players with the Pakuranga Golden Oldies Fencibles, the pair travelled overseas and in 1989 went to Toronto, Canada.

With more than 1200 players in teams from around the world, the NZ team played against teams from Japan, Australia, England and South Africa – and triumphed over Canada in the final.

'We beat them 5 tries to 4,' Graham said.

'That was the most vicious game I've ever played. And after the match they [Canadians] wouldn't even sit down with us.'



Pictured with some of their rugby memorabilia – and wearing the shirts they wore in Toronto – are Graham Gerrard, left, and Jim Green.

After the tournament, they did a bit of touring around. They later found they had left the country just before the big earthquake that devastated much of the USA's west coast.

Back in those days, Graham was a teacher at Pakuranga, before becoming manager of 700 to 800 agents direct-selling San Michele cosmetic products.

Jim previously worked for Ansett

and Air New Zealand but later had a cheesecake shop.

Initially his nickname was Tomato Jim because he would take his home-grown tomatoes to work to share.

Once he bought the cheesecake shop, he became known as Cheesecake Jim.

As inevitably happens, their lives took different paths and they lost touch.

To cut a long story short, their lives merged again as Graham moved to Whangamata in 2004.

Jim and his wife Christine moved from Whiritoa – where they had lived for 18 years – to Whangamata after they won a Jennian Home in a Heart Foundation Lottery, in 2012.

Jim is retired now but keeps his pulse on everything happening in Whangamata by having his morning coffees at various cafes around town.

If there's anything you want to know about Whangamata – and famous people he has met – just ask Jim!

Graham leads a slightly quieter life, working as a barman at Whangamata RSA and being one of the quizmasters at the regular Friday night quizzes.

– Lesley Staniland

I believe everyone has an interesting story to tell. If you want your life's story told – or you know someone with an interesting background – please give me a call on 021 664 784 or email whangamatanews@gmail.com

Action Sports Direct

JETSKI FISHING TOURNAMENT

Briefing

7pm, 17th April inside WOSC Clubrooms
Fishing from 7am, Saturday 18th April 2020

Weigh In

3.30-4.30pm at WOSC Clubrooms
Weigh Station

Prize Giving

5.30pm inside WOSC Clubrooms

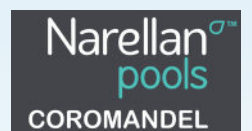
Registrations

Close Friday 17th April at 7pm
\$30 per angler
Enter online

Sat 18th April
Only \$30
per angler



Proudly brought to you by



JUNIOR FISHING TOURNAMENT

Saturday 4th April

"All Juniors Welcome"

OVER
\$10,000
IN PRIZES!

- Ages 10-17 years
- Register at WOSC on the day
- Weigh in at 3pm

[f @whangamataoceansportsclub](https://www.facebook.com/whangamataoceansportsclub)

P. 07 865 8704

Check www.oceansports.co.nz for all the details!

Packards in Paradise

About 30 Packard cars rolled into town up for lunch at the Whangamata Ocean Sports Club on a recent sunny Sunday. After enjoying a splendid meal and Whangamata hospitality, the group of grand old cars continued north on the next leg of their journey. Photos by Peter West.



RESTAURANT HOURS:

Evening Dining from 5.30pm, 7 days.
Bistro & Bar Food from 4.00pm Monday – Thursday,
and from 12pm Friday, Saturday & Sunday.
The Carvery is available from 6pm–8pm Fridays & Saturdays.

Whangamata Club

JOIN NOW

for Instant Membership
& Club Benefits
FOR ONLY \$35

TOUCAN

– 14TH MARCH, 7.00PM

THE STEVE TULLOCH BAND

– 21ST MARCH, 7.30PM

BEACH HOP WEEK

– 24TH TO 28TH MARCH

JERSEY BOYS & GREASE

– 11TH APRIL, 7.30PM

DINING AVAILABLE FROM 12PM-9PM MONDAY TO THURSDAY AND 9AM-9PM FRIDAY TO SUNDAY

Tuesday	Coastal Rockers Repco Rock n Roll Hop with Gerry Lee from 7pm
Wednesday	Kiwi Plates Nostalgia Quiz Night from 8pm
Thursday	Circle Dance Lessons, 2pm
Thursday	Tim & The Rockets from 7.30pm
Friday	Rock N Roll Dance lessons, 2pm
Friday & Saturday	Gerry Lee from 6.30pm and Chet O'Connell and the Rock & Roll Riot from 8.30pm



Marina achieves yet another feather in its cap

Whangamata Marina staff are proud and delighted to achieve yet another environmental acknowledgement.

Hot on the heels of their Clean Marina accreditation last year comes the ‘Compliance Champion’ award from Waikato Regional Council Coasts & Inland Waters Team.

Marina Manager Susan Amos, pictured, said meeting compliance requirements took up many hours of the team’s working week.

‘We work closely with the WRC, scientists and environmentalists to ensure we’re complying with required consents, which include

dredging, beach nourishment, wastewater management, water quality, sediment etc,’ Sue said.

As the marina’s reputation grows, Sue says she often hears comments from local and visiting boaties about the cleanliness and standard of the marina.

‘Visitors in particular tell us how clean we are and that our marina is up there with world standard marinas,’ Sue said.

‘We are so proud to receive this recognition from the Waikato Regional Council.’

- Lesley Staniland

DOC comes to the party

This time it was the real deal – champagne from flutes, not disposable cups.

Our last issue featured Councillor Terry Walker and others celebrating the news that TCDC had given the go-ahead for the sealing of Wentworth Valley Road.

Work was to begin on March 9... but only as far as the boundary with Department of Conservation land.

But in early March, residents and councillors were told by DOC they would spend almost \$300,000 on getting their 330 metres of road – from the TCDC boundary to the DOC camp – also sealed.

A further \$15,000 has been allocated for the following financial year for any tidying that is required.

It is expected both sections of the road will be completed at the same time.

Valley residents, who have been lobbying council for decades to have the road sealed, celebrated ‘with caution’ when Cr Terry Walker produced the bubbles.

‘After waiting so long and lobbying council for decades, we’ll believe it when we see the tarseal down,’ one resident said.

- Lesley Staniland



It’s the real deal this time – valley residents celebrating with bubbles, from left, Bruce Hinson TCDC group manager – operations, Cr Terry Walker, Joy Robinson, Ian Johansen, community manager Eileen Hopper, Roz Handy (obscured), Petra and Reinhard Nickel and Maurice Perry, a regular visitor to the valley.

WHANGAMATA MARINA BERTHS FOR SALE OR RENT



Waikato Regional Council
Coasts & Inland Waters
Team recognises

Whangamata Marina Society

as a

COMPLIANCE CHAMPION 2020

- Sheltered in all weather
- No tidal flows
- Full length fingers
- Two intermediate piles
- Very minor hull fouling
- 35 tonne travelift
- 2 bay hard stand shed with designated spray area
- Secure hard stand
- Trailer boat parking
- Walk to town & supermarket
- Ample parking
- Private laundry and shower facility
- Diesel fuel berth 24 hours
- Video surveillance & security



Phone: 07 865 6274
whangamarina.co.nz

SNIPPETS

Groms win

Whangamata's Pia Rogers stormed to her first-ever win at national level taking out the Under 14 Girls Division with a whopping 13.6 point heat total in the 2020 Billabong Grom Series presented by Oceanbridge – Event 3. An 8.17 point ride at the end of the final sealed the win over Leia Millar (Piha), Chloe Groube (Pau) and Alani Morse who finished second through fourth.

Arts funding

The Creative Communities Scheme is taking applications for the current funding round until 27 March 2020.

This round of funding is for projects that will take place between May 6 this year and May 6 next year.

Applications need to meet one or more of the following criteria to be eligible for the funding: Broad community involvement; Diversity; Young people. The applications will be assessed on April 29 and a second round will occur in September. For more information on the scheme and application forms see tcdc.govt.nz/ccs.



Nats petition for return of cheques

There used to be a time when paying for everything, from groceries to your power bill, was with a written cheque at your local bank.

However, cheques are soon to become a thing of the past, leaving many people wondering, frustrated, at how they will continue paying for these things.

On top of this, Kiwibank announced recently that they are shutting their local branch down.

In a small town like Whangamata, this is completely unacceptable.

Eliminating the use of cheques alters the lives of many people, including many people that live here in the Coromandel.

National has today launched a petition so that people can continue to pay Inland Revenue and other Government departments by cheque.

Inland Revenue stopped accepting cheques at the end of March and, since this was announced, I've been inundated by complaints from people who have no other way to make payments.

Many older New Zealanders don't know how to use internet banking, or don't want to because they're concerned about scams.

People in the Coromandel don't necessarily have access to good internet connections and some people simply don't own a computer.

Revenue Minister Stuart Nash needs to step up and help these people.

His office has told me that in the past financial year Inland Revenue received more than 400,000 payments by cheque. That's 6.8 per cent of all payments made in the last financial year.

This issue might seem trivial to Mr Nash but it's causing distress to many New Zealanders, some of them our most vulnerable citizens.

Whangamata's power supply is now backed up by NZ's largest grid-scale battery.

The system from lines company Powerco is a much welcome investment.

The system will kick in if electricity fails for any reason which is terrific news for many people, among them business owners in the Whangamata CBD that have been victims of power outages during crucial peak summer trading.

I'd like to thank Powerco for investing in Whangamata's community and electricity security.

*Authorised by Scott Simpson
MP, 614 Pollen St, Thames*

Restoration under way

Work to repair the tatty-looking but popular surfboard feature in Port Rd should be completed by the time our paper hits the streets on March 13!

The feature, next to the Whangamata Area Office carpark, is popular with visitors and overseas tourists taking souvenir photos with family and friends posing on the board.

However, over summer it has been well used and graffiti'd and the surfaces of the boards have succumbed to the usage as well as the salty and sandy weather conditions here.

Thames-Coromandel District Council spokeswoman Amber Baker said repairs should be completed by March 13, depending on the weather allowing a timber stain to be applied.

'We have been assured work will be completed pre-Beach Hop,' Amber said.

'The cost involved depends on the materials and time but our parks and reserves staff estimate no more than \$200.'

- Lesley Staniland



KITSCHY CAT

KITSCHY CAT FUNDRAISING SHOP For "absolutely shabulous" new & used

WE ARE MOVING!
YES – the beautiful shop in its entirety!
to Whangamata Furniture & Bedding
STILL OFFERING FREE NEUTERING SERVICES
Watch this space!

**310 CASEMENT ROAD OPPOSITE NEW WORLD SUPERMARKET
OPEN THURSDAY-SUNDAY 10AM-2PM**

FLOORINGXTRA.CO.NZ

FLOORING TO SUIT YOUR STYLE

CARPET • VINYL • TIMBER • LAMINATE • RUGS

WHANGAMATA FLOORING XTRA

Whangamata | 636 Port Road | 07 865 8562 | whangamata@flooringxtra.co.nz

Rangi – remembered by so many



**Rangi – always smiling,
always cheerful and a woman
with the kindest heart.**

Photo: Steve McDowell

Hundreds turned out to the Whangamata Club to pay tribute to, and farewell Violet Kapuarangi (Rangi) Ngawiki, who died on February 29, aged 86.

Rangi will always be remembered as a quiet, gentle, caring person.

Bright, intelligent, always smiling, Rangi shared her love with everyone who came in contact with her.

As the most gracious hostess at the 'big club', she welcomed everyone with a 'Hello dear, how are you?' along with her infectious smile.

Children were usually greeted with a lollipop and a wee chat.

After her private cremation in Thames on March 2, the celebration of her life at the club was conducted by her former boarder Barry Romero who described Rangi as 'unique, determined, and a fierce wahine when need be'.

Rangi was one of 13 children, had three children (one deceased), seven grandchildren, 17 great-grandchildren and three great-great-grandchildren.

They all called her Auntie Rang or Mama Rang.

Numerous people who paid

tribute to her described her as 'an amazing woman with a boisterous spirit; cheeky; the life of the party; wonder woman; ruthless; pure; funny; vivacious, and beautiful'.

She certainly was that. In the 10 years I knew her, there was never a cross word, a 'pity poor me' or frown from Rangi.

On leaving the club, I was always told to 'take care darling' – and I think she said the same to everyone.

Club president Ian 'Macca' McAuley described her as a 'shining light' who loved her job at the club.

Rangi had standards to uphold too. Always, even at the age of 86, she dressed immaculately and wore her high heeled shoes. So she was not happy with men turning up to the club in singlets.

After nagging the executive committee for some months, she was delighted when they brought in the 'no singlets after 6pm' rule.

Club manager Mike Williams said Rangi loved her job, loved the members, and was his sounding board.

She will be sorely missed by many.

Rest in peace Rangi.

– Lesley Staniland



Richmond Villas

LIFESTYLE VILLAGE

*Living the lifestyle,
loving the choice...*

**A Lifestyle Village in Thames
on the Coromandel**

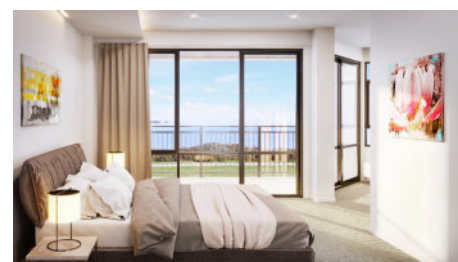
**NEW 1 & 2 BEDROOM
APARTMENTS AVAILABLE**

**VIEW OUR SHOW HOME
APARTMENT TODAY!**

The 24 new apartments in Stage 1 at Richmond Villas Lifestyle Village are under construction now – and all are within walking distance to Thames' shops, cafes and walkways. The perfect location to enjoy your fun-filled retirement.

Our open plan, single level apartments feature covered balconies with fantastic views of the sea, Kauaeranga River and mountains.

Each unit's elegantly finished kitchen, lounge, bedroom and bathroom offer stylish warmth and light. All residents enjoy scenic views from each level's shared lounges, use of the Village Community lodge and participation in all activities and amenities at your leisure.



**Thursdays
OPEN DAY
at 10.30am**
*Come and experience
the difference!*



82 Richmond Street, Thames
0800 868 5484
www.richmondvillas.co.nz

OUR COMMUNITY

gives a damn!

SUPPORT THOSE WHO COME TO OUR RESCUE...

WHANGAMATA FIRE BRIGADE



The brigade attended a vegetation fire during the early hours on Sunday morning. Thankfully it was within reach of the town water supply so a good water source was

established early and it was extinguished early.

Investigations are under way to find the source of ignition.

A visit from Rainbow Cottage day care on training night with a gift voucher for our efforts in saving a favourite visiting spot was a lovely touch, thanks.

During the week we also responded to a monitored fire alarm that had been activated.

On arrival the system was found to have been damaged from a water issue in an above apartment.

Salvage was used to reduce further water damage.

Our brigade is currently preparing for the upcoming Beach Hop and selling our annual raffle tickets.

*Wishing you a safe couple of weeks,
CFO Nigel Airey*

DEFIBRILLATOR LOCATIONS

- Area School gymnasium
- Bunnings, Aickin Rd
- Bowling Club, Rutherford Rd
- Combined Squash and Tennis Sports Club, Barroclough Rd
- Carters, 103 Lindsay Rd
- Coastguard, 619 Beach Rd
- Community Swimming Pool, Achilles Ave
- Fire Station, Port Rd and both fire appliances
- Medical Centre, Lincoln Rd
- Moana House, SH25
- New World Supermarket, Aickin Rd
- Onemana Rural Fire depot - Dial 111
- Onemana Surf Club
- Onemana Boatshed Café, Onemana Dr
- St John Ambulance station, Lincoln Rd
- St John Health Shuttles
- St John Op Shop, Martyn Rd
- Surf Club, Williamson Park
- TCDC Area Office, Port Rd
- The Marina, end of Beach Rd
- Titoki Golf Club, Waihi Rd
- Whangamata Club, Port Rd
- Whangamata Ocean Sports Club, Port Rd
- Whangamata RSA, Port Rd
- Whangamata Tennis Club
- Whiritoa Rural Fire Station, Dial 111
- Whiritoa Surf Club, Kontiki Rd
- Williamson Golf Club, Achilles Ave
- Z Gas Station, Port/Ocean Rd cnr

WHANGAMATA POLICE

WET ROADS

Usually a sure indicator of the first rain in a while around here is unfortunately someone falling off the roads. Aside from the tragic weekend we had around the Waikato, I'm pleasantly surprised that we have had a good run over two afternoons of rain recently, and how about that light show that came with it! Unfortunately for me my air-conditioning at home fell victim to the lightning; hopefully insurance pulls through!

BURGLARY SOLVED

I'm over the moon to say that a Burglary that occurred at a local takeaway business last year has been solved. A fundamental tool leading to this was a DNA profile held by Police which matched an item left at the scene of the crime which we swabbed. A local has been arrested and interviewed and admitted their part in the burglary.

FOUND PROPERTY

Still have plenty of it team; remember if you are a finder and hand it in to Police and it is not claimed within one month you can opt to claim the item yourself. Judy wanted me to make special mention of 9ct gold bracelet, engraved with the names of two people and a date which appears to be significant to them. This was found at Beach Access 9 - we would love to reunite the owner with this.

COMMUNITY PATROL

These folks are still doing a stellar job, giving up their own time to be additional eyes and ears for us. If you're interested in being part of the Community Patrol team head to the Community Patrol website or talk to one of the local patrollers to find out how.

SPEED

I have been approached with concerns of speed around the local school buses - remember, when passing a stationary

school bus displaying school signs that is offloading or picking up school children you MUST reduce your speed to 20km/h - regardless of the posted speed limit at the time. So, if you're in a 100km/h speed zone, you still reduce your speed to 20 km/h.

CONVICTION FOR LIGHT FINGERED WHANGA VISIT

In February a 38-year-old Auckland woman was sentenced on 6 charges of theft from several Whangamata stores along Port Road in 2019. Police were impressed with the collaboration between locals to identify the woman and see her face the courts. Several items were able to be returned undamaged but nearly \$799 worth of reparation was ordered by the judge. That isn't close to the total damage done but we can all be proud of the people here in our lovely beach town.

- Sergeant Will Hamilton, Officer in Charge

Need a Bin for your Home or Bach?

Smart can Help.

Skip Bin sizes to suit all jobs.

Wheelie Bin options from \$2.79 a week*

Phone us, email us, or book online today.

phone 0800 4 MY BIN
email info@smartbins.co.nz
online www.smartbins.co.nz



*Subject to Terms and Conditions



smart
environmental

Proudly 100% Kiwi owned

OUR COMMUNITY

gives a damn!

SUPPORT THOSE WHO COME TO OUR RESCUE...

WHANGAMATA COASTGUARD

FEBRUARY 2020 CALLOUTS

All assisted vessels and persons on board were returned safely to port.

02 FEB: CRV GJ Gardner Rescue was tasked to possibly assist Tairua/Pauanui CRV in an operation to re-float a vessel beached on South Bay beach at Slipper Island. The operation was performed successfully by Pauanui Rescue without assistance from CRV GJ Gardner Rescue and as such was duly stood down and returned to base at Whangamata.
Total Whangamata Coastguard involvement 7 hrs.

02 FEB: Launch. 9.8m. Engine problem. 4 POB. Near Terakihi Point. CRV GJ Gardner Rescue responded and tow assisted the

vessel to a Whangamata berth.

Total Whangamata Coastguard involvement 7 hrs.

09 FEB: Launch. 10m. Engine problem. 13 POB. South of Slipper Island. Due to the nature of the problem a Vessel of Opportunity (VoOP) which was close by offered to provide immediate assistance and transfer some of the POB. CRV GJ Gardner Rescue was tasked to the scene. With the engine problem partially resolved the vessel was shadowed back to Whangamata and assisted into a marina berth. A special thank you to ANDIAMO, the VoOP for their assistance.
Total Whangamata Coastguard involvement 18 hrs.

13 FEB: Power boat. 6.1m. Engine problem.

3 POB. Between Slipper and Alderman Islands. CRV GJ Gardner Rescue responded and tow assisted the vessel to the Whangamata boat ramp.

Total Whangamata Coastguard involvement 12 hrs.

17 FEB: CRV GJ Gardner Rescue was tasked to assist Tairua/Pauanui CRV in the search for a possible swimmer missing off Pauanui beach. After performing a creeping line search CRV GJ Gardner Rescue was advised by Tairua/Pauanui CG to stand down and return to base.

Total Whangamata Coastguard involvement 18 hrs.

20 FEB: At 0500 hrs CRV GJ Gardner Rescue was tasked to assist Tairua/Pauanui CRV in an operation to re-float a Launch

with 3 POB beached on South Bay beach at Slipper Island. In tandem with Pauanui Rescue the target vessel was successfully towed back out to deeper water. After ensuring the safety and sea worthiness of the target vessel CRV GJ Gardner Rescue returned to base at Whangamata.

Total Whangamata Coastguard involvement 16 hrs.



AUCKLAND RESCUE HELICOPTER TRUST



FEBRUARY 2020 CALLOUTS

05 FEB: Great Mercury Island. Crew tasked to Great Mercury Island to assist a male patient in his 40's who slipped backwards off a ledge. He was flown to Tauranga Hospital in a minor condition.

05 FEB: Pinnacles. Crew tasked to the Pinnacles to assist a female patient in her 20's suffering a fall while walking. She needed to be winch extracted from the scene and was flown to Waikato Hospital in

a minor condition.

06 FEB: Otama. Crew tasked to Otama to assist a male patient in his 70's suffering a medical complaint. He was flown to Waikato Hospital in a serious condition.

11 FEB: New Chums. Crew tasked to New Chums Beach to assist a male patient in his 60's suffering an injury while body boarding. He was flown to Waikato Hospital in a minor condition.

14 FEB: Matarangi. Crew tasked to Matarangi to assist a female patient in her 60's suffering a medical complaint. She was flown to Waikato Hospital in a serious condition.

20 FEB: Hahei. Crew tasked to Hahei to

assist a female patient in her 80's suffering a non-fatal drowning. She was flown to Auckland City Hospital in a serious condition.

21 FEB: Waihi Beach. Crew tasked by police to Waihi Beach to assist with the search and rescue of a male patient in his teens alongside surf lifesaving and coastguard. After an unsuccessful search, crew were stood down by police and returned to base.

24 FEB: Whitianga. Crew tasked to Whitianga to assist a girl suffering a medical complaint. She was flown to Starship Hospital in a serious condition.

26 FEB: Port Jackson. Crew tasked to Port Jackson to assist a male patient in his 50's

suffering a medical complaint. Unfortunately the patient died. The deceased was passed into the care of police and Westpac 3 returned to base.

29 FEB: Tairua. Crew tasked to Tairua to assist a girl suffering a medical complaint. She was flown to Starship Hospital in a moderate condition.

29 FEB: Hahei. Crew tasked to Hahei to assist a male patient in his 40's suffering a medical complaint. He was flown to Waikato Hospital in a serious condition.

29 FEB: Kereta. Crew tasked to Kereta to assist a male patient in his 30's suffering a medical condition. He was flown to Thames Hospital in a moderate condition.

ONLINE SHOPPING

CLICK & COLLECT NOW
AVAILABLE AT THAMES



100 MARY STREET

OPEN 7 DAYS

PAK'nSAVE

OUR POLICY: NZ'S LOWEST FOOD PRICES

paksaveonline.co.nz

Your challenge – climb Mount Everest!

Coromandel’s More FM is following in its Bay of Plenty’sister’ station’s footsteps with a brilliant idea to financially support volunteer emergency services around the Coromandel.

The Mount Everest Challenge has been extremely successful in raising thousands at More FM Bay of Plenty for the past six years.

For two months – from Sunday (March 15) until May 13 – More FM Coromandel is asking people to

climb a hill, mountain, or flights of stairs in a bid to attain 8848 metres – the same height as Mount Everest.

Register as either an individual or a team, challenge others to join you, figure out how to raise some money, and GO FOR IT!!

If you can’t climb, or don’t like climbing, try something else – exercycle, walk, crawl . . . the 8848 metres!

Actually, because we’re not all fit millennial, just do what you can and raise some money however you’re able.

Get sponsors for your climb, walk, crawl etc, or hold a community barbecue, picnic, school mufti day, concert . . . use your imagination.

Charities that will benefit are fire brigades, LandSAR, Coastguard, St John, Surf Life Saving, and the Coromandel Rescue Helicopter Trust (in a bid to bring back

the Whitianga-based rescue helicopter).

Pak’nSave Thames and Safer Coromandel are supporting the promotion.

To enter, and for more information, go to: morefm.co.nz or email everest@morefm.co.nz

The first 100 entries get an official T-shirt.

– Lesley Staniland

Much laughter at ‘Cinderella’ tennis



It was a fun day of inter club tennis at the Whangamata Racket centre on Sunday.

Karaka brought a squad of 8 men and 4 women to town and played doubles combination.

This inter-club initiative was arranged jointly by club president Greg Thomas and dual club member Graeme Allen.

The joy of tennis was the aim of the day with no official scores kept.

As visiting Karaka player Harry quipped: ‘We play Cinderella tennis, sometimes we don’t make it to the ball’.

Each double match lasted 20 minutes with men’s, women’s and combined matches played.

The reverse trip to Karaka is planned for next year.

– Don Mackay



Whangamata
SERVICE CENTRE

Full Mechanical Repairs, Lubrications and Services, WOFs, Tyres, Tune ups, Batteries, Wheel alignments, Diagnostics.

Scan Tool.

AA Breakdown services

First Assistance Breakdown services

P. 07 865 9435 • 201 Aickin Road, Whangamata • M. 027 608 5770
E. wgmssc@xtra.co.nz

ONEMANA
BUILDING CO

We can help you with all your building and renovation requirements, no matter how BIG or SMALL.

We pride ourselves in high quality workmanship and are Licensed Building Practitioners (LBP).

Our approach to building work is first getting to know our customers and understanding their needs.

We can help you with:

- Advising if a Building Consent is required
- Submitting Relevant Documents to Council
- Design and Construction of your Dwelling
- Estimating Costs and Budget of your Project
- Advice on Repairs and Maintenance of your Property

Contact: Duane Jones P. 027 526 4414
E. hello@onemanabuilders.co.nz W. www.onemanabuilders.co.nz

SUPPORT LOCAL BUSINESSBuy WHAT you need, don't buy the hype!

Paddlers do well despite challenging conditions



The two Junior W6 under-16 teams.



The men's team.



Enika and Mai, two-man.

Whangamatā hosted Race 1 of the Hauraki Summer Series over the weekend with over 100 on the water racing hard.

The first race was an 8km lap of the Whangamatā Harbour and consisted of single and double waka (W2) as well as novice and junior six person crews (W6).

There was a solid Whangamatā representation with two U19 W6 girls teams, a W2 girls team and Shannon Hughes in the singles.

All our paddlers did Whangamatā proud.

The second race was 16km to Onemana and back for the experienced W6 teams.

Conditions were challenging with a 1m swell and northerly wind.

The teams loved the challenging

conditions, especially the downwind run on the way back from Onemana.

Whangamatā was represented by the 'Whangamata Jetski Club', an open mens team who came in 4th place.

There were lots of spectators enjoying the racing from the wharf and beach road reserve.

The Hauraki Summer Series consists of four races around the Coromandel.

The second race was at Cooks Beach on March 7, then Waihi Beach March 14.

The final race of the series will be in Te Puru on April 4.

For more information see www.wakaama.co.nz

- Shannon Hughes



Tributes flow for Jeanette Fitzsimons

The tributes have been flowing for former Green MP Jeanette Fitzsimons, who died suddenly on Thursday March 5.

She is reported to have had a fall earlier in the day and although admitted to Thames Hospital, had a massive stroke about 9.45pm.

MPs far and wide have paid tribute to the former Greens co-leader and staunch environmentalist.

Coromandel MP Scott Simpson was among those who sent his condolences to the family.

'I am very sorry to hear of the passing of Jeanette Fitzsimons. She was a staunch advocate for Coromandel people and the

Coromandel electorate during her time as the local MP.

'She was a very active, vocal and visible member of our community. Never short of a practical, thoughtful contribution to any conversation, Jeanette was much respected and admired locally, nationally and internationally.

'Always a passionate, energetic and articulate advocate for the environment, she lived by her principles and held them dear. I'll miss seeing her around Thames and the Coromandel community.

'My condolences go to her husband Harry, her children and her extended family. She will be very dearly missed,' Mr Simpson said.

Homesafe
Locksmiths
& Services

ONE key to fit
ALL doors!
FREE advice on your
lock requirements

Ian McAuley (Macca) Owner/Operator • 126A Tamaki Rd, Whangamata
Phone 021 719 495 or 07 865 7092 • Email imacca2003@yahoo.co.nz

CCS ROOFING

LOCALLY OWNED
& OPERATED

FOR:
NEW ROOFING
RE-ROOFING
CONTINUOUS SPOUTING
METAL FASCIA
DOWNPIPES
MAINTENANCE



CALL US FOR YOUR FREE QUOTE

Geordie Walden: 022 396 4143
ccspouting@gmail.com | www.ccspouting.co.nz

Bowling club needs your support please!

Exciting developments are on the cards at Whangamata Bowling Club.

The old No 1 green, which takes many hours each week to maintain, is to be replaced with a carpet green.

But, as can be expected, a huge swathe of carpet to cover the old green isn't cheap. At \$320,000 most of the cost will be covered through grants, greenkeeper Peter Burgess said.

About \$50,000 will be sought through public donation. If you can help, please contact Peter Burgess on 07 865 8409 or Keith Miles on 07 865 6955.

Keep an eye out for more on this story in our next issue, March 27.

Have your say on our coastal plan

Waikato Regional council is reviewing its current Waikato Regional Coastal Plan and are seeking feedback from the community. This plan sets out the rules for activities in the coastal marine area – that's the 'wet' area of the coast below the high tide mark and extending out to the 12 nautical mile limit (about 20km). In this area the coastal plan manages activities like the occupation of space, extraction of sand and other materials, and discharges of contaminants. A drop-in session will be held in Whangamata at the RSA on March 17 from 1.30pm til 3.30pm and at Saint Francis House, Tairua, from 5.30pm - 7pm.

SPORTS RESULTS

500 CARD CLUB

Whangamata RSA – Feb 26: Thirteen players enjoyed the afternoon. Winner on the day was Janet Randell with Robert Watson taking home the chocolate bar. Robert also won the raffle.

March 4: Sixteen players enjoyed the afternoon. Winner on the day was Robert Watson with Mary Miller taking home the chocolate bar and Chris Halpin won the Raffle.

New players always welcome on Wednesdays from 12:30pm – play starts at 1pm

GOLF CROQUET

February 24: Winners on the maximum 21 points were Bill McGowan and Max Hill and the runnersup on 19 points were Judy McGowan and Don O'Sullivan.

March 2: Winner on 20 points was Don O'Sullivan and the runnersup on 19 points were Filly Buchanan, Dave Burrell and Max Hill. New members welcome.

INDOOR BOWLS

Whangamata Club

The adjunct held their opening day of the 2020 season on Friday February 14.

President Alex Steel welcomed 30 members to the new season wishing all well and expressing good wishes to those members who will go on to represent the club at North Island and National championships, outside tournaments and representative games throughout the season.

Alex then asked Patron and long standing member, Pat Mortenson, to open the season. Pat also wished all bowlers well and bowled the first kitty.

Winners on the day with four out of four wins were: Don Gardner, Ngaire Wallace and Janet Foley.

Runners Up: Peter Gorrie, Max Hill and Barbara Mathieson

Raffle winner: Noeline Stockman

February 21: Winners today with four out of four wins: Tim Jones, Basil Johnstone and Kath Sayles

Runners Up: Lindsay Tomlin, Betty Wilmer and Barbara Mathieson

Raffle winner: Ron Bartlett.

Whangamata RSA

From the Bowling Alley to the Mat: RSA Indoor Bowls got under way for the 2020 season on February 4 with a good turnout.

We welcomed new players Ron Bartlett and Pam Gray and our part timers Alison Barr (UK) and Maureen Fitzpatrick (Auckland).

A long way to come for a game of bowls Alison!

This month's winners were: Basil Johnstone, Trish Schultz; Ann Purcell, Joy O'Sullivan, John Aislabie; Norm Sayer, Max Hill.

Runnersup were: Ann Purcell, Joy O'Sullivan; Peg Jones (twice), Trish Schultz, Barbara Mathieson; Ann Costar, Patrick Cairns.

Raffle winners were: Peg Jones (twice), Denise Braithwaite.

A thanks this month to our injured Laurene for taking care of our morning teas.

Keep up the good work everyone for the putting out and putting away of our mats, etc. – Trish Schultz

Whangamata Club Indoor Bowls adjunct – Friday 28th February

Winners with three wins: Ann Purcell, Don Gardner, Brian Wyatt

Runners Up also with three wins: Ellen McSkimming, Phil Curd, Nancy Stewart

Raffle winner: Lindsay Tomlin

Friday 6th March

Our first trophy event was held today – Ivy Horn Fours with 29 members drawn into eight teams. Five teams of four players and three teams of three players.

Winners on the day were Ellen McSkimming, Jim Bell, Ngaire Wallace with four wins and the only qualifying team.

Runners up were decided by countback from the six other teams who had two wins each.

Alex Steel, Ann Purcell, Jenny Harpur Raffle winner: Joy O'Sullivan.

MAH JONG

On Friday Feburary 28 there were 56 players at Mah Jong. The Bigwood Prize, sponsored by Smoky Pallet, was won by Ngaire Hurst. The Mah Jong winners of the day were Karyn Jones and Lois Madsen both with 40 points. Runner up was Gael Butler with 37 points and third equal were Erin Wyatt and Helen Cashen with 35 points.

On Friday February 21 there were 55 players at Mah Jong at the Whangamata Club. The Bigwood Prize, sponsored by Smoky Pallet, was won by Colleen Belsham. The Mah Jong winner was Erin Wyatt with 37 points. Runnerup was Lynne Plowright with 33 points and third was Joyce Deeming with 31 points.

On Saturday February 15, 12 members went to Whakatane to play in their tournament. We had a good day. Carol Archer won the tournament, Vina Carroll was 3rd, Heather Dansby-Scott was 4th and Robyn Snell was 5th. Carol also won the second session.

GOLF

Whangamata Ladies 18-Holers

Feb 25: Points Cup, Stableford Round 1. Haggle: Barbara Harold 1, Jill Agnew 2, Lynne Saes 3, Julie Haak 4, Helen Cashen 5, Rachel Richardson 6, Carolyn Kemp 7. Twos: Lynne Saes, Jill Agnew and Nancy Gerrard. Golfer of the Week: Barbara Harold

March 3: Area Stableford Rd 1. 1st: Silver, Diane Barrance, 2nd: Bronze, Julie Haak.

HAGGLE: Stableford. 1ST: Julie Haak 47, 2nd: Charmaine Morrissey 44, 3rd: Carolyn Kemp 40, 4th: Colleen Reekie 40, 5th: Barbara Harold 39, 6th: Val Turvey 38, 7th: Diane Barrance 38, 8th: Chris Davenport 38,

NTP Hole 2: Charmaine Morrissey, LP Hole 4: Joanne Somerville, LP Hole 5, Lynn Cruickshank.

LP Hole 9, Pauline Pike. NTP Hole 11, Barbara Harold. LP Hole 18, Carolyn Kemp.

Golfer of the Week: Charmaine Morrissey



PURE PENINSULA RADIO

94.0 FM
West Coast

www.CFM.co.nz

95.1 FM
East Coast

GET CASH FOR YOUR UNWANTED VEHICLE

We buy all vehicles – used, mechanical damage, old,
any condition. No rego, no WOF... no problem.

**TOP DOLLAR PAID
INSTANT CASH** **0800 333 398**

Cars, vans, 4WDs, utes, trucks – **CARS WANTED DEAD OR ALIVE**

Call 0800 333 398 or text 021 344 449

Conditions apply



On behalf of
TCDC

Approved Contractors

Will be conducting spray rounds & carrying out pest plant control work, targeting
general exotic dune weeds on the Eastern Coromandel coastal reserves.
This includes, and is not limited to Whangamata, Pauanui, Tairua, Hot Water Beach,
Cooks Beach, Mercury Bay, Opito Bay, Kuaotunu, Rings beach, Matarangi and
Whangapoua.

From:

24/02/2020 - 15/12/2020

(Excluding School Holidays, Weekends & Public Holidays)

The area will be signposted and a spray plan is available on request.

If you have any questions

Please contact:

Tanya Patrick on 07 867 2010

CLASSIFIEDS

BOATS FOR SALE

SKIFF, 17 ft, exc cond, 10 HP
Johnson OB in excellent order, oars,
anchor, lines, trailer (good tyres),
not registered. \$1500, as is, where is.
Onemana. Ph Steve 07 865 6229.

LOST

GOLD ankle chain, possibly
Hetherington Rd or town area.
Please Ph 021 664 784

WANTED TO RENT

PREVIOUS HOME OWNER

- Very respectful
 - Non Smokers
 - Needs 4 Bedroom Home
 - Testimonials available
 - Has 2 dogs & 1 cat
 - Close to town preferred
 - Urgency Please
 - LONG TERM NEEDED
- PH JOYCE 0272 385 114

**If you want to place classified advertising
in Whangamata NEWS, please email
WhangamataNEWS@gmail.com or phone 021 0232 1661**

UPCOMING EVENTS

March 24-29: Repco Beach Hop
2020. Go to www.beachhop.co.nz
or pick up a programme
soon.

CLUBS & ORGANISATIONS

Wednesdays:
500 Cards at Whangamata
RSA, open to all levels. All
welcome from 12:30pm with

play starting at 1pm. Phone
Chris at 865 9749 or Collette
865 8916.

Thursdays:
Ramblers meet 9am Thursdays
at Titoki Reserve to explore
the Peninsula and beyond. For
further information contact
Kevin 027 750 5060 or Dave 07
865 8099.

• If you have an event coming up that you'd like us to list or cover
please let us know. Email details of the event, the date, the venue
and the time to: wordy1@gmail.com

WHANGAMATA TIDES 2020

March ☾ New Moon: 24th ☀ Full Moon: 10th

Date		High tide AM	Height (m)	High tide PM	Low tide AM	Height (m)	Low tide PM	Sun rise	Sun set
13	Fri	10:52	2.1	23:20	4:30	0.1	17:00	07:12	19:37
14	Sat	11:43	2.1		5:22	0.2	17:51	07:13	19:35
15	Sun	0:13	2.0	12:34	6:14	0.2	18:42	07:14	19:34
16	Mon	1:07	2.0	13:27	7:09	0.3	19:35	07:15	19:32
17	Tue	2:03	1.9	14:21	8:05	0.4	20:30	07:16	19:31
18	Wed	3:01	1.8	15:18	9:03	0.5	21:28	07:17	19:29
19	Thu	4:00	1.8	16:17	10:03	0.5	22:27	07:18	19:28
20	Fri	4:58	1.8	17:15	11:02	0.6	23:25	07:19	19:26
21	Sat	5:53	1.8	18:11		0.6	11:58	07:20	19:25
22	Sun	6:43	1.8	19:02	0:20	0.5	12:50	07:20	19:23
23	Mon	7:30	1.8	19:49	1:09	0.5	13:37	07:21	19:22
24	Tue	8:14	1.8	20:32	1:54	0.5	14:20	07:22	19:20
25	Wed	8:54	1.8	21:13	2:36	0.4	15:01	07:23	19:19
26	Thu	9:33	1.8	21:52	3:15	0.4	15:39	07:24	19:17
27	Fri	10:11	1.8	22:29	3:53	0.4	16:16	07:25	19:15
28	Sat	10:48	1.8	23:07	4:30	0.5	16:52	07:26	19:14
29	Sun	11:24	1.8	23:45	5:08	0.5	17:30	07:27	19:12
30	Mon		1.8	12:02	5:48	0.5	18:10	07:28	19:11
31	Tue	0:25	1.8	12:43	6:31	0.5	18:52	07:29	19:09

April ☾ New Moon: 23rd ☀ Full Moon: 8th

Date		High tide AM	Height (m)	High tide PM	Low tide AM	Height (m)	Low tide PM	Sun rise	Sun set
1	Wed	1:10	1.7	13:28	7:18	0.6	19:40	07:30	19:08
2	Thu	2:01	1.7	14:20	8:10	0.6	20:33	07:30	19:06
3	Fri	2:57	1.7	15:18	9:07	0.6	21:31	07:31	19:05
4	Sat	3:57	1.8	16:21	10:07	0.5	22:32	07:32	19:03
5	Sun	3:59	1.8	16:25	10:09	0.4	22:34	06:33	18:02
6	Mon	4:58	1.9	17:27	11:09	0.4	23:33	06:34	18:01
7	Tue	5:56	2.0	18:26		0.3	12:07	06:35	17:59
8	Wed	6:51	2.0	19:22	0:30	0.2	13:02	06:36	17:58
9	Thu	7:45	2.1	20:16	1:24	0.2	13:55	06:37	17:56
10	Fri	8:37	2.1	21:08	2:18	0.1	14:47	06:38	17:55

PITCHER ELECTRICAL

Know the faces that come to your home!



**Authorised
serviceman for most
major brand home
appliances**



**Specialists in new homes, alterations,
lighting and all electrical repairs**

**SERVICING
WHANGAMATA FOR
OVER 50 YEARS!**

**3 GENERATIONS
AND 1 MORE
ON THE WAY!**

Authorised F&P Service Centre

P. 865 8848 | M. 027 4923 974

NO JOB TOO BIG OR TOO SMALL



**first
national**
REAL ESTATE

Paradise Coast

0800 868 439

www.corofirstnat.co.nz

enquire@corofirstnat.co.nz

1/237 Main Road, Tairua

501a Port Road, Whangamata

Licensed Real Estate Agents (REA 2008)

New Listing
AUCTION

Auction In Our Rooms
1pm, 4th April 2020
(unless sold prior)

Web# 11908100913



Web# 11908100850

Spectacular 270 Degree Views

Views to make your heart sing & a lifestyle to love. 2-storey, 2+ bedroom townhouse with superb views to the harbour & rural hills. Spacious open plan living, balconies off the lounge & dining for al fresco dining. Office and tandem garage.

\$ AUCTION
Carol Hatton
027 574 3758
carol@
corofirstnat.co.nz



A Property With Options

Nth-facing, elevated site, with harbour views. Built in the 90, this low maintenance 2 bedrm sun trap is ready for you to enjoy &/or appreciate holiday rental income. Great indoor/outdoor flow, lge deck, perfect for BBQ's & entertaining.

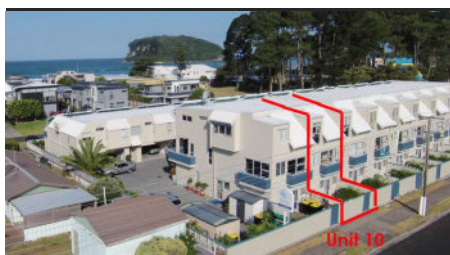
\$595,000
Robyn Joslin
027 273 5864
robyn@
corofirstnat.co.nz



New Price



Web# 11908100784



Easy Holiday Living

Full share. Metres from the Surf Club, 3 dble bedrooms, 2 bathrooms **\$649,000**

Call Robyn
027 273 5864
Web# 11908100844



A Privileged Position - Onemana

This is it! On reserve w direct beach access, 4 bedrms, 4 bathrms, large living, decks **\$PBN**

Call Robyn
027 273 5864
Web# 11908100750



Beach Hopper Retreat

Has all the bells & whistles for storage. Garages galore! 5 bedrms. 2 bathrms **\$ By Negotiation**

Call Robyn
027 273 5864
Web# 11908100772



Beach Bach Bargain

Classic beach bach, lge lounge sep kitchen/dining, 2 bedrms. Decks both sides **\$599,000**

Call Robyn
027 273 5864
Web# 11908100785

The Ultimate Kiwi Bach

You've found it here. Beautifully presented 2 bedroom home or bach. New kitchen, laundry & bathroom, spic and span throughout. Enjoy a big dining and kitchen area which opens to the front deck for breakfasts in the sunshine.

\$587,000
Gordon Turner
021 385 385
Norma Turner
021 0233 6879



New Price



Prime Apartment

Superb 3 bedrm, 2nd level, furn Bathed in natural light. Great nthn view. **\$649,000**

Gordon & Norma
0800 021 120
Web# 11908100794

New Price



Overlooking The Marina

Upmarket 2 lge bedrm 3 level t/house. Extraordinary location O/plan living, **\$895,000**

Gordon & Norma
0800 021 120
Web# 11908100780

New Price



In The Heart Of Whangamata

Town, beach & clubs an easy walk Big, 3-4 bedrm 70's home 779sqm cnr site **\$By Negotiation**

Gordon & Norma
0800 021 120
Web# 11908100795

New Listing



Secure Position & Space

Solid, spacious 2 level home Opp beach & estuary, 3 bedrms 2 bath **\$775,000**

Chris & Liz **0274 500 022**
Web# 11908100912



Section
Web# 11908100767

Great Size, Great Potential-Whiritoa

We have a wonderful opportunity for you to build your beach dream on this site. It sits on a gentle slope with an open northerly aspect and is approximately 600 metres to the sands of beautiful Whiritoa beach.

\$315,000
Chris & Liz
0274 500 022
chrisliz@
whiritoabeach.co.nz



Onemana Rural Fire Force helps to protect our community.

We are proud to be a sponsor of this vital community service. List your property with

First National **0800 868 439**



Our business is getting You to the Beach!





**first
national**
REAL ESTATE

| Paradise Coast

0800 868 439

www.corofirstnat.co.nz

enquire@corofirstnat.co.nz

1/237 Main Road, Tairua

501a Port Road, Whangamata

Licensed Real Estate Agents (REA 2008)



Lot 3 - 2.88Ha

Web# 11908151418

State Of The Art Living - Tairua

TAIRUA - Perfectly positioned home, quality eco living. Unique, special home, no expense has been spared. 2.88Ha block with established native bush & landscaped grnds. Extensive views of the Pacific Ocean, Islands & Tairua village.

\$1,590,000

Darren Perry

021 798 460

Sandie Faiers

027 622 7717



New Listing



Web# 11908151437

Lock Up & Leave - Tairua

Looking for a holiday escape that is the ultimate in holidays made easy? Here it is. An apartment in the heart of town. 2 bedrms, mezzanine storage area, open plan living/kitchen plus balconies both sides for morning & afternoon sun.

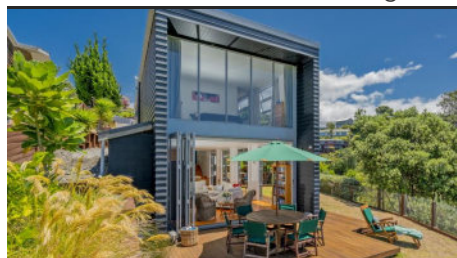
\$470,000

Darren Perry

021 798 460

Sandie Faiers

027 622 7717



Feel The Ocean With Your Eyes -Tairua

4 bedrm home with the X Factor
Sensational hbr & ocean views
\$1,199,000

Call Darren
& Sandie
021 798 460
Web# 11908151433



Affordable Investment -Tairua

Choose from 1 or 2 bedrm units
Polynesian inspired, freehold villas
Units from **\$375,000** Incl GST if any

Call Darren
& Sandie
021 798 460
Web# 11908151423



Family Living - Tairua

Perfect starter, 4 bedrms
Rumpus, generous deck
Flat section for kids **\$545,000**

Call Darren
& Sandie
021 798 460
Web# 11908151431



On The Edge Of Town -Tairua

Renovated villa on 15.9Ha grazing
Lge modern barn with accom.
potential **\$2,200,000** +gst (if any)

Call Darren
& Sandie
021 798 460
Web# 11908151394



Located For Lifestyle - Tairua

14270sqm vacant lifestyle block
Ocean, islands & surf bch views
\$2,450,000

Call Darren
& Sandie
027 622 7717
Web# 11908151402



Sections With Views -Pauanui

Last 2 sections on Sanctuary Cove Hill
Call Rainer
Lakes Resort & forestry views **021 300 511**
\$150,000 each

Web# 11908151391&2



Web ID: 31908151424

In Pursuit of Excellence? - Tairua

Sensational views of the Tairua Harbour, Mt Paku North facing with a spacious deck 3 dbl bdms, two bthrms plus a self contained studio. lovingly renovated and like the views is a statement of excellence, put this on your list!

\$960,000

Darren Perry

021 798 460

Sandie Faiers

027 622 7717



Web# 11908151426

It's A Keeper - Tairua

Imagine living country life yet enjoying the benefits of being in town. This impressive 4 bedrm, 3 bathrm, Nth facing property has sensational Pacific Ocean & rural views, fenced grazing, dble barn, dble gge plus sep self contained cottage.

\$1,725,000

Darren Perry

021 798 460

Sandie Faiers

027 622 7717



Web# 11908151403

Exceptional A+ Diamond -Tairua

Enter this A+ framed home & enjoy the clean crisp Scandie feel. Beautifully designed & decorated, over 3 levels you will find 4 bedrms & 2 bathrms, new o/plan kitchen, lge windows, entertainers deck area & fully fenced.

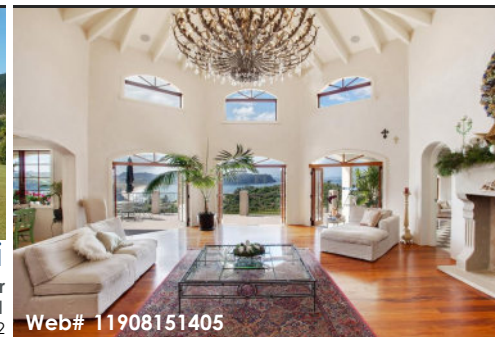
\$620,000

Vanessa Adlington

027 515 5626

ness@

corofirstnat.co.nz



Web# 11908151405

Villa Estate - Hot Water Beach

An Elite Estate of generous proportion with a Tuscan feel. 3 bedrooms, study, 2 lounges, plus a separate 2 bedroom guest house. Uninterrupted views over Hot Water Beach & the Pacific Ocean. Viewing by appointment only.

\$ PBN

Vanessa Adlington

027 515 5626

ness@corofirstnat.co.nz



*While you enjoy
the beach life...*

**We'll take care of
your property**



Whangamata Real Estate's Property Management Centre offers a superior level of property management to landlords. This is done in an environment focused on property management rather than being an 'add on' service to sales.

Managing property involves more than just collecting rent – now more than ever legal knowledge is essential! Let our professional team take care of the problems while you carry on enjoying life!

Pop into our Port Road office and have a chat with Kylie, Suzanne or Vince – our capable property management team.

Whangamata

REAL ESTATE LTD

Licensed under (REAA 2008)

MREINZ

OFFICES | 411 Ocean Road & 607 Port Road, Whangamata
Ph: 07 865 8499

www.whangamatarealestate.co.nz

Whangamata

REAL ESTATE LTD MREINZ
Licensed under (REAA 2008)



SPLENDID LIFESTYLE LIVING

2 GOVERNORS HEIGHTS - \$1,200,000

- So close to town, but affording you the privacy of a rural outlook
- This quality built Golden Home has expansive decks overlooking the gardens, just begging you to sit in paradise and enjoy the moment.
- Four spacious bedrooms plus office, with the main bedroom featuring an ensuite and walk in wardrobe.
- Open plan living area with excellent indoor/outdoor flow onto the north facing deck,
- entertaining friends and family will be a pleasure
- Triple internal garaging, plus there is a stand alone 76m2 lock up garage ideal for cars, boat or campervan.
- Established citrus & fruit trees including avocado, macadamia, chestnut, mandarin, orange and lemon.
- View by appointment only.

www.whangamatarealestate.co.nz ref# 7788



Wendy Jeffs
027 421 9482
wendy@whangamatarealestate.co.nz

Whangamata

REAL ESTATE LTD MREINZ
Licensed under (REAA 2008)



OUTSTANDING ELEVATION & OUTLOOK

217 TUKERE DRIVE - ENQUIRIES OVER \$800,000

- If you like your views to be up close, yet long and panoramic, you need to view this property.
- Facing north with the water literally just across the road, you take in the expansive natural beauty of the whole upper harbour and the surrounding hills from here.
- The 1970s house has a solid concrete block base and offers spacious living, four double bedrooms (2 up, 2 down), a bathroom on each floor, separate laundry and a 48sqm single door garage.
- Enjoy all day sun and serenity in spades from this position.
- Reserve across the road also means you will never have houses interrupting your beautiful, ever-changing vista.

www.whangamatarealestate.co.nz ref# 7790



Pete Sheppard Chris Speedy
027 609 4955 021 747 901
pete.chris@whangamatarealestate.co.nz

OFFICES

411 Ocean Road & 607 Port Road, Whangamata
Ph: 07 865 8499

www.whangamatarealestate.co.nz



703B OTAHU ROAD - AUCTION



Pete Sheppard Chris Speedy
027 609 4955 021 747 901
pete.chris@whangamatarealestate.co.nz

Looking for a premium beach location with water views?
Wake up to islands on the horizon and the beautiful south end of Whangamata Beach literally across the road.
The 474sqm corner site offers a good old 3 bedroom, 2 bathroom bach with basement garage and great potential. Renovate or build new, you will not over-capitalise in this position.

AUCTION on site Saturday 4 April at 2pm (unless sold prior)
OPEN HOMES every Saturday and Sunday at 1pm
No viewings available over Beach Hop
www.whangamatarealestate.co.nz ref# 7789
Call Pete or Chris to view this property.

Whangamata

REAL ESTATE LTD MREINZ
Licensed under (REAA 2008)

OFFICES

411 Ocean Road & 607 Port Road, Whangamata
Ph: 07 865 8499

www.whangamatarealestate.co.nz

Harcourts Coromandel Beaches



Onemana 115 Oratia Place

Life Is A Beach And So Much More

This five-bedroom, three bathroom and three level property delivers a quality residence with unobstructed views across the reserve and tennis court along the beach and out to sea as far as the eye can see. Making the most of this prime position across the park to the beach or for a game of tennis. Enjoy, this high spec home which features granite bench tops, floating staircase, double glazing with plenty more features. Time to make the move! DON'T DELAY CALL ME TODAY!

For Sale \$2,250,000 **View** by appointment
Open Homes Saturday & Sunday
11.30am - 12.30pm
www.harcourts.co.nz/WGA2698

Sandra Prouse M 021 571578 P 07 865 9400
sandra.prouse@harcourts.co.nz
Paul Prouse M 027 549 3769 P 07 865 9400
paul.prouse@harcourts.co.nz



Whangamata 105 The Drive

When Location Is Important

Looking for a place to call home? You'd love to be in Whangamata? Then this single level tidy 3 bedroom home is ready for you to move into. Perfectly positioned for the sun, built by GJ Gardner Homes in 2001, offering a separate living room, open plan kitchen/dining and family room with easy access to the private back yard, perfect for hosting those summer night BBQ's. If you have been looking for the ideal setting in which to enjoy with your family, this reliable brick and tile home in this location is definitely a winner. Don't delay in viewing ASAP as homes this good certainly won't be around for long. Call to arrange a private viewing any time.

For Sale by Negotiation
View
www.harcourts.co.nz/WGA2699

Amanda Stenning M 021 128 8783
amanda.stenning@harcourts.co.nz
Hayley Hayward M 021 800 686 P 07 865 9400
hayley.hayward@harcourts.co.nz



Whangamata 123b Mayfair Avenue

Beach Hop Bargain - All Offers Considered

Your own camping site in the middle of town. Self contained utility room and two restored retro caravans. Private crossed leased rear site, fully fenced with room for tents and toys. Owners have enjoyed this holiday retreat for several years, but now surplus to their requirements. Garden shed and built in smoker together with some furniture all included.

For Sale by negotiation
View by appointment
www.harcourts.co.nz/WGA2696

Marion Turner AREINZ
M 027 522 0051 P 07 865 9400
marion.turner@harcourts.co.nz



Whangamata 121 Durrant Drive

Bunk Now Build Later

The ideal holiday home! Set on a 621m² section on the outskirts of town, this little beauty will tick a lot of the boxes. A great getaway for city dwellers, this two cabin accommodation can cater for a couple of families at least and there is also space for a tent or two! With the potential to build new with an upper harbour view this property will attract a lot of interest.

For Sale \$485,000
View by appointment
www.harcourts.co.nz/WGA2605

Allan McKenzie
M 021 072 4447 P 07 865 9400
allan.mckenzie@harcourts.co.nz



Whangamata 302 Martyn Road

A Must To View

Situated in a central position in the heart of Whangamata this property will tick lots of boxes! This 3 bedroom property has plenty of parking spots for visitors and beach hop enthusiasts. Because of the location almost everything is on your doorstep. Both the harbour and beach not far away and the supermarket and the town centre extremely close by. This property will attract lots of interest so make the decision to view today.

For Sale by Negotiation
View by appointment
www.harcourts.co.nz/WGA2701

Allan McKenzie
M 021 072 4447 P 07 865 9400
allan.mckenzie@harcourts.co.nz



Whangamata 313a Hetherington Road

Hop Into Hetherington!

All set up for you to enjoy. Prime position, a short stroll to the marina, supermarket and the center of Whangamata. With beach hop fast approaching here is where it can all be happening-sit back and watch the cars cruise by from your own property-front row seats. Plenty of room to park up and pitch a tent for extras. This is a real Whangamata bach/beach pad, bring your boat and toys, make this your holiday get away spot.

For Sale by Negotiation
View by appointment
www.harcourts.co.nz/WGA2700

Hayley Hayward
M 021 800 686 P 07 865 9400
hayley.hayward@harcourts.co.nz



Allan McKenzie
M 021 072 4447
allan.mckenzie@harcourts.co.nz



Amanda Stenning
M 021 128 8783
amanda.stenning@harcourts.co.nz



Hayley Hayward
M 021 800 686
hayley.hayward@harcourts.co.nz



Dennis Wiley
M 021 555 374
dennis.wiley@harcourts.co.nz



Chris Brown AREINZ
M 027 257 6602
christopher.brown@harcourts.co.nz

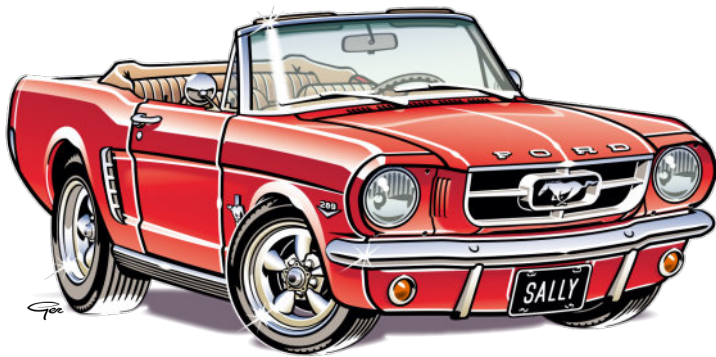


Marion Turner AREINZ
M 027 522 0051
marion.turner@harcourts.co.nz

Top Hop House 2020

Repco

BEACH HOP™



BE IN TO WIN \$1000

Call into the Harcourts office 507a Port Road, to collect this years entry form for **HARCOURTS TOP HOUSE 2020**.
Voting will be done by the Repco Beach Hop 20 Programme, and drawn 4pm - 6pm 28th March 2020.

Terms and conditions apply.



Whangamata 136 Tirohanga Drive

An Opportunity To Live In Paradise

Occupying the most commanding hill crest position, taking in Whangamata's upper harbour and Coromandel's bush clad hills. Beautifully presented inside and out, this expansive home is set on a well-developed section with an established garden.

The home is on one level. With an expansive north facing deck with room for all the family to gather and enjoy the views.

Downstairs boasts an attached unit with full bathroom, lounge area and it's own entrance, this could be utilized as Air B&B or room for the extended family. Outdoors feature a range of entertaining areas, beautiful garden that is a real delight, take time to experience the magical view shared with kereru and tui from the treetops.

For Sale

By Negotiation
View by appointment
www.harcourts.co.nz/WGA2695

Hayley Hayward
M 021 800 686 P 07 865 9400
hayley.hayward@harcourts.co.nz
Amanda Stenning
M 021 128 8783
amanda.stenning@harcourts.co.nz



Onemana 231 Onemana Drive

Beachfront Living At Its Best!

Pristine Onemana beachfront property. Architecturally designed and meticulously maintained. Picture windows give sea and island views from the living and all bedrooms. A large seaside deck and a covered western deck provide entertainment space, just footsteps from the sand. A must view for the discerning buyer.

For Sale

\$2,350,000
View by appointment
Open Homes
Saturdays 11.00am - 12.00pm
www.harcourts.co.nz/WGA2697

Chris Brown AREINZ
M 027 257 6602 P 07 865 9400
christopher.brown@harcourts.co.nz
Dennis Wiley
M 021 555 374 P 07 865 9400
dennis.wiley@harcourts.co.nz



Onemana 234 Onemana Drive

Big House Great Value!!

Short walk to cafe and beach
- Sea Views from lounge and bedrooms
- Three levels, lots of storage
- Next door to reserve

For Sale

\$859,000
View by appointment
www.harcourts.co.nz/WGA2593

Chris Brown AREINZ
M 027 257 6602
P 07 865 9400
christopher.brown@harcourts.co.nz



Sandra Prouse

M 021 571 578

sandra.prouse@harcourts.co.nz



Paul Prouse

M 027 549 3769

paul.prouse@harcourts.co.nz



Mandi Jane Povey

M 027 441 4948

mandijane.povey@harcourts.co.nz

Thumbs up to our emergency services volunteers

Every 10 years or so, Whangamata's voluntary emergency services get together for a group photo session.

Ten years ago volunteers with the fire brigade, surf club, St John Ambulance, LandSAR, Police and Coastguard lined up at

Whangamata Marina for the photo but this time the photo shoot was held at Williamson Park.

Unfortunately, although an ambulance was in the photo, St John personnel were heading for Thames in the other ambulance transporting a patient to hospital.



Several of the volunteers pictured – and they are just some of Whangamata's voluntary services personnel – are 'multi' volunteers –some lifeguards also volunteer

with St John or the fire brigade and fire brigade volunteers also serve the ambulance service. These people all deserve a medal!
Words & photo: Lesley Staniland

BRAIN BENDERS answers for each puzzle are included on this page

QUICK crossword

1		2		3	4		5	6		7		8
9							10					
				11								
12				13				14				
			15									
20		21				22				23		
24												
29				30						31		
33												

- ACROSS**
- 3. Intense sorrow (5)
 - 9. Rave (4)
 - 10. Express approval (6)
 - 11. Release (5)
 - 12. Ungainly fall (4)
 - 14. Confidential (6)
 - 15. Promptly (colloq) (6)
 - 17. Slander (6)
 - 20. Naming word (4)
 - 22. Female pronoun (3)
 - 23. False god (4)
 - 24. Urgent request (6)
 - 25. Marked effect (6)
 - 29. Incentive (6)
 - 31. Conceal (4)
 - 32. Phantom (5)
 - 33. Small lump (6)
 - 34. Dreadful (4)
 - 35. Break out suddenly (5)

- DOWN**
- 1. Preliminary version (5)
 - 2. Pry (5)
 - 4. Physical or verbal dispute (3-2)
 - 5. Instalment (7)
 - 6. Unconstrained (4)
 - 7. Interpret wrongly (7)
 - 8. Refined (7)
 - 13. Trim (5)
 - 16. Cleaning implement (3)
 - 18. Pilfer (5)
 - 19. Out of control crowd (3)
 - 20. Emerging (7)
 - 21. Improve (7)
 - 22. Slide snakelike (7)
 - 26. Mildly overweight (5)
 - 27. Lacking self-confidence (5)
 - 28. Discourage (5)
 - 30. Stare lecherously (4)

SUDOKU

Fill so every row, column and every 3x3 box contains 1-9

6			4			1		2
		8						
			1		3		8	6
3	5				6		1	
8	7		3	1	4		2	5
	1		5				6	3
7	8		9	5				
						3		
2		1			7			9

W25

EASY

		1	4					9
6					1	3		8
				8	5		4	
1			2		7		3	
			4					
5		3		6				2
	7		8	5				
9		8	2					7
4					9	8		

W26

HARDER

WEBWORD

10. Suspend
9. Emerald
8. Leopard
7. Bolland
6. Mislaid
5. Orchard
4. Waylaid
3. Erupted
2. Haggard
1. Tabloid

CROSSWORD

22. Slither, 26. Plump, 27. Timid, 28. Deter, 30. Ogle.
18. Fitch, 19. Mob, 20. Nascent, 21. Upgrade.
6. Free, 7. Misread, 8. Genteel, 13. Prune, 16. Mop.
Down: 1. Draft, 2. Snoop, 4. Run-in, 5. Episode, 31. Hide, 32. Ghoul, 33. Nodule, 34. Dire, 35. Erupt.
22. She, 23. Idol, 24. Appeal, 25. Impact, 29. Carrot, 12. Flop, 14. Secret, 15. Pronto, 17. Defame, 20. Noun, 11. Untie, 9. Rant, 10. Praise, 11. Untie.

SOLUTIONS

SUDOKU

6	3	5	4	7	8	1	9	2
2	4	1	8	3	7	6	5	9
4	1	5	3	7	9	8	2	6
5	6	8	2	1	4	5	3	7
3	7	8	2	2	1	4	5	3
7	8	3	6	9	6	5	2	4
9	1	4	5	8	2	7	4	8
2	8	7	9	4	3	1	6	5
1	4	6	5	2	7	9	6	8
4	9	7	1	2	3	5	8	6
6	2	4	7	9	1	3	5	8
1	2	8	6	5	9	4	3	7
8	3	5	4	7	8	1	9	2
6	3	5	4	7	8	1	9	2
2	4	1	8	3	7	6	5	9
4	1	5	3	7	9	8	2	6
5	6	8	2	1	4	5	3	7
3	7	8	2	2	1	4	5	3
7	8	3	6	9	6	5	2	4
9	1	4	5	8	2	7	4	8
2	8	7	9	4	3	1	6	5
1	4	6	5	2	7	9	6	8
4	9	7	1	2	3	5	8	6
6	2	4	7	9	1	3	5	8
1	2	8	6	5	9	4	3	7
8	3	5	4	7	8	1	9	2

TRIO

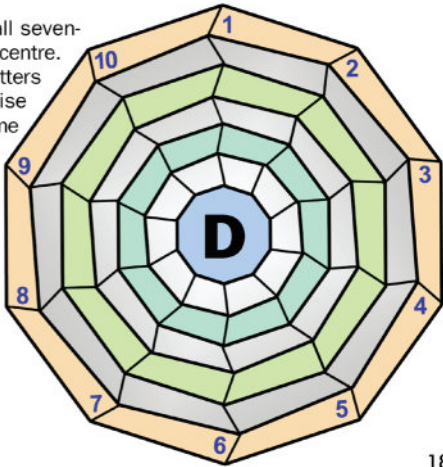
ARA

WEBWORD

The answers from 1 to 10 are all seven-letter words ending with D in the centre. If your answers are correct, the letters in the outer band moving clockwise from 1 will reveal the name of some diminutive TV characters (3,7)

clues:

- 1 Smaller newspaper
- 2 Drawn, unwell
- 3 Burst
- 4 Ambushed
- 5 Fruit tree group
- 6 Lost
- 7 Quayside post
- 8 Big cat
- 9 Gemstone
- 10 Bar temporarily



18

TRIO

Find the 3-letter sequence that completes these four words.

H _ _ _ SS
TI _ _ _
C _ _ _ FE
_ _ _ BIC

All puzzles ©
The Puzzle Company

BOOFBOLAND

PAINTER & DECORATOR

P O Box 410, Whangamata 3643

M: 0274 367 254

E: jenboof@outlook.com



fairview
EXCEPTIONAL WINDOWS & DOORS

FAIRVIEW WHANGAMATA
304 CASEMENT RD,
WHANGAMATA
07 865 8919
WWW.FAIRVIEWWHANGAMATA.NZ