

PARADISE COAST

Whangamatā NEWS

ISSUE 120 – 21 JUNE, 2024

FREE
COPY

PLEASE
TAKE ONE!

Biggest hearts & most determination

PAGES 14-16 Photos by Mark James



FOLLOW US

BY LOCALS, FOR LOCALS, ABOUT LOCALS.

WE WELCOME YOUR CONTRIBUTIONS!

EMAIL WHANGAMATANNEWS@GMAIL.COM • FACEBOOK [@WHANGANews](https://www.facebook.com/WHANGANews)

Taken home by bach owners and visitors to everywhere

SEE ALL OUR EDITIONS LIVE AT
WWW.WHANGAMATANews.NZ

EDITORIAL & MEDIA SALES:

JENNIE BLACK – 021 0232 1661

DELIVERED TO WAIHI, WHIRITOA, WHANGAMATĀ, ONEMANA, HIKUAI, PAUANUI & TAIRUA

The driving adventure of a lifetime!



Since 2016, The Brits Job Tours have taken over 150 Kiwis on the driving adventure of a lifetime, seeing everything that's great about Britain and Ireland.

Locals Col McCabe and Pete Stretch have organised two unique self-driving tours for 2025: The Darling Buds of May Tour is 21 nights, including the fabulous Chelsea Flower Show, and you will be driving England's country roads at their prettiest!

The Ultimate Tour is 49 nights. You will experience all of England, Wales, Scotland and Ireland, up close and personal, including the legendary Edinburgh Tattoo.

Staying in mostly 4 star accommodation, including ancient coaching inns and castles, both tours include car rental, car insurance, accommodation,

breakfasts, and free entry into hundreds of gardens, stately homes, car displays and other fabulous attractions.

Both tours are designed individually for you, with the opportunity to check out your family history on the way. From Stonehenge to Salisbury Cathedral, from the Beatles Tour to Bonnie Scotland; you'll live it all!

The Darling Buds Of May Tour runs from 5 to 27 May, 2025, and is \$6,999 per person (land-based). The Ultimate Tour runs 29 June to 17 August, 2025, and is just \$14,999 per person (land based).

Check out the itineraries on www.thebritsjob.com then give our Travel Agent Kalena a call on 07 949 9990 to book your keys now! Remember: you'll see more with us than you would on a bus!

Welcome to the second June 2024 edition of Whangamatā News

– a magazine By Locals, For Locals, About Locals

Whangamatā News

www.WhangamataNews.nz

EDITOR & SALES DIRECTOR

Jennie Black
Phone 021 0232 1661
WhangamataNews@gmail.com

SPORTS REPORTER & PHOTOGRAPHER

Mark James
Phone 021 668 469

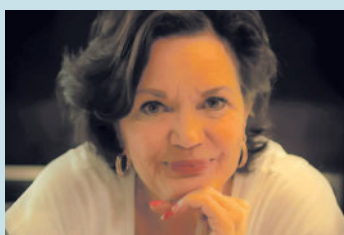
ART DIRECTOR

Anna Gledhill
WhangamataNewsArt@gmail.com

PUBLISHING

Printed by Beacon Media Group.
Published by Whangamatā News 2021 Ltd

All content featured in Whangamatā NEWS Limited is subject to copyright in its entirety and may not be reproduced in any form without permission from the Publisher. Any material supplied for publication is at the submitter's risk. All information is believed to be true by the Publisher at the time of printing. Views expressed in Whangamatā NEWS Limited are not necessarily those of the Publisher.



For advertising queries contact Jennie Black

Editorial/Sales Director
Phone 021 0232 1661
jennieablack@gmail.com

We welcome your letters, articles, photos, news tips and advertising enquiries

- We ask that letters and articles be no more than 250 words, although exceptions can be made.
- Photos should be high resolution and in focus.
- Include your name, no noms de plumes.

For editorial or photographic matters, phone Jennie on 021 0232 1661 or email WhangamataNews@gmail.com

HON SCOTT SIMPSON

MP for Coromandel



Budget delivers tax relief for New Zealanders

This year's Budget delivers on National's core promise to provide New Zealanders with tax relief.

It's been 14 long years since the income tax brackets have been adjusted and the changes announced in Budget 2024 will help households in Whangamatā and the wider Coromandel with the cost of living.

Perhaps more importantly, it signals the coalition Government's intention to take less of your money because we understand that a dollar taken in tax, was a dollar someone earned.

We are targeting tax relief to low and middle-income households. Families with young children are set to benefit most. It gives average income households up to \$102 a fortnight, plus FamilyBoost childcare payments of up to \$150 per fortnight for eligible families.

For some people it may seem like a small amount, but for others it's going to make a big difference. It reduces the pressure to pay the weekly bills, to put food on the table, and to top up the car with petrol.

Unfortunately, we haven't been able to deliver every initiative we wanted in this first Budget because the country is in a far worse financial situation than we had previously been told.

Finance Minister Nicola Willis has been up front with Kiwis that it's going to take several years before we can get the country's books back in shape. We're committed to a more prudent and careful financial approach which will allow us to afford the quality services that New Zealanders deserve.

– Authorised by Scott Simpson MP,
614 Pollen St, Thames

Scott Simpson MP for Coromandel

Contact me anytime

0800 550 330 • scottsimpson.co.nz
mpcoromandel@parliament.govt.nz
f [scottsimpsonmp](https://www.facebook.com/scottsimpsonmp)

National
Authorised by Scott Simpson, Parliament Buildings, Wellington.



Andacco Anouk 1
~~\$229~~
\$99

Tango's

Whitianga 07 866 4465 | Whangamatā 07 865 8088
WWW.TANGOSSHOES.NZ

AfterPay, Zip & Laybuy welcome.

f i

Can we make Whangamata a bird paradise?

Have you seen more Tui and Fantails lately? People around town are remarking on the numbers being seen.

Even more importantly, the endangered Australasian Bittern has been sighted at swamps north and south of town, and even at the Golf course. Numbers are small but significant.

Even more exciting is the possibility of kiwi on the northern outskirts of town. After a resident reported hearing a male kiwi call repeatedly, a listening device has been set up by Predator Free Hauraki Coromandel for a two week period. It may turn out to be a false alarm, but there is no doubt that generally birds are being more successful at breeding than they were.

And why? Whangamatā Harbour Care now has 22 traplines around the perimeter of Whangamatā, in parks and reserves, along harbour and estuary shorelines and over on the peninsula. A year ago there were only 12 traplines but the network has rapidly expanded under the passionate leadership of Roselle Gould. Successful Trust applications have enabled the purchase of more traps and volunteers have come forward to patrol them weekly, fortnightly or monthly, depending on volunteer timeframes and varying degrees of access difficulty.

And what success we are seeing. In the last 2 months we have



dispatched 10 stoats, 442 rats, 17 possums and 175 other vermin. Plus we have reports of trappers who are not part of our network, particularly on surrounding farms, also achieving

big totals. Are we winning? Well the bird numbers would suggest so.

If you want to go on our mailing list and keep up to date with

Whangamata Harbour Care, or you wish to offer to help in practical ways, please contact harbourcare1999@gmail.com

Curtains and Blinds and More



Whangamatā and surrounds for:

Curtains, Sheers, and Linings
Sun-screen, Light-filter, & Blockout Roller Blinds
Wood, PVC, and Aluminium Venetian Blinds
Honeycomb Blinds | Roman Blinds
Wood and PVC Shutters
Motorisation and Automation
Locally owned and operated providing a complete in-home service from consultation to installation

Contact Louize or Gavin on
027 4777 916
or email info@curtainsandblinds.co.nz

RSA



WHANGAMATA

OPEN 6 DAYS

Tuesdays to Sundays from 12 noon

Live shows & entertainment

Families welcome!

Anyone can join, come see us today

Subs are due 30 June 2024

Pay before 30 June and go in the draw to win 1 of 6 \$50 RSA Vouchers

New Membership Cards have arrived so don't delay, get it out of the way!

Ying's Thai & European Cuisine

OPEN 6 DAYS: TUE-SUN
LUNCH, DINNER & TAKEAWAYS

Everyone welcome
Lunches daily 11am-3pm
Dinner from 5pm



P. 07 865 9419

[@whangamatarsa](https://www.facebook.com/whangamatarsa)

www.whangamatarsa.com

RSA

MID WINTER CELEBRATION

SUNDAY 23 JUNE
11AM AT WHANGAMATA RSA

70th ANNIVERSARY
Join us for The Official Lunch for our 70th Anniversary
Come help us celebrate!

Whangamata RSA officially opened as an Incorporated Society on the 9th June 1954

Explore our collection of memories through an array of photos and documents from over the years.

Who knows? You might come across a familiar face - maybe even your own!

\$30 BUFFET LUNCH
BOOKINGS ESSENTIAL

Our local swimmers in France!

Four members of the Whangamatā Ocean Swimmers group took part in the Defi De Monte Cristo, in Plage du Prado Marseilles at the beginning of June 2024.

This annual event attracts close to 5000 competitors over three days, unfortunately for the organisers and participants, strong winds prevented any racing on the first day and postponed competition until mid afternoon on the second day.

The 6km event took place on Sunday morning in almost perfect conditions, two ferries took 458 participants out to the infamous island landmark Château Dif, which provided a significant background in the Alexandre Dumas novel The Count of Monte Cristo.

Ian Gunthorp finished a creditable 72nd with a time of 1:39.3, Roisin Howley 1:56, Mark Hayes 2:04.9 and Rob Boston 2:11.00.



Left to right: Roisin Howley, Rob Boston, Mark Hayes and Ian Gunthorp.

Winter solstice dip



The winter solstice in the Southern Hemisphere occurs on Friday, 21 June this year. It is the shortest day of the year. After the winter solstice, days start becoming longer and nights shorter as spring approaches.

Here in Whangamatā we celebrate this day by having a dip in our beautiful ocean.

This will occur at 8.50am where

the Whanga Dippers will meet by the surf club and would love as many people as possible to join in this celebration of the shortest day of the year. Afterwards the group will then meet for a coffee at Blackies.

Swimming in cold water during winter can offer several health benefits. It boosts your immune system, elevates moods by the release of endorphins, often

referred to as the 'happiness hormone'. Our Whanga Dippers can certainly attest to this. A social connection has been developed since the inception of the group one year ago.

The group has been meeting every Wednesday morning at 7.30am since then. The group would love to see more people join in to celebrate the winter solstice.

To the EDITOR

A big thank you

Whangamata Patch & Quilt Group would like to give a big thank you to local businesses' that supported us by donating goods, etc., for a raffle for our Quilt Show that was held over King's Birthday Weekend. There were 40 generous businesses, too many to list, but from that raffle we are able to donate \$1000 to Breast Cancer.

Wendy Dowling

We welcome your letters!

We ask that letters be no more than 250 words, although exceptions can be made. Include your name, no noms de plumes.

Send them to:
WhangamataNews@gmail.com



Explore Whangamata with



Quality bike servicing, kayak and SUP Hire with E Bikes and analog bikes to explore and discover Whenuakura Island, The Paradise Coast, cycle trails and surrounds.

Fun and function at Pedal & Paddle!

Pedal & Paddle

CYCLES, HIRE,
SALES & SERVICE

700 PORT RD, WHANGAMATA

OPEN 6 DAYS
P. 027 224 2207

Coastal Rockers celebrate 30 years

Whangamatā News caught up with Sandra Whitmore, Vice President of the Coastal Rockers to learn all about the clubs 30th birthday celebration last Saturday at the Whangamata Club, which has been their base since 1994.

The founding president, Kerry Fenn Campbell, still attends regularly to club nights, to support and teach new dancers. Presently, they have an impressive 70 members, who go along to learn and enjoy dancing.

The rock 'n' roll club quite often gives fantastic dancing displays for the local kindy and Moana

House residents, and they are an integral part of Repco Beach Hop annually, with the street parade that everyone loves.

The Coastal Rockers had five past Presidents attend on Saturday night along with another 130 dancers from various regions and 56 coastal rockers. Oh, what a night! The group of more than 200 were super excited and had fantastic night of dancing to the Che Orton Band.

Their raffles raised \$760 which will go towards the Moana House Dementia fund.



Above: Mac Campbell past president, Kerry Campbell founding president, Barbara Mathieson Life member, Grace Patterson past president, Leslie and Alistair Reid Life members, Mike Jacobs past president.

Left: Mac Campbell past President, Kerry Campbell founding President, Grace Patterson past President, Mike Jacobs past President.



Whangamata
Club

Join Us AT THE **WHANGAMATA CLUB**



CLUBS
NEW ZEALAND INC
sky sports TAB

V.A.C. Award Winners
Playing Hits From The 50's To Now

Toucan

...duet better than one!



Ken Strong Karen Davy

Saturday 22nd June
6.30pm - Late
Live at The Whangamata Club

The Whangamata Club Presents

Gerry Lee

**New Zealand's Premier
Rock n Roll Pianist**

Friday 28th June

from **6:30pm**





ALL BLACKS V ENGLAND
SAT 06 JUL - 07:05PM
LIVE ON THE BIG SCREEN

**OPEN
DAILY FROM
11AM**

BISTRO
Monday - Friday from 3pm
Saturday & Sunday from 12pm

DINNER MENU
From 5pm daily

RESTAURANT
Friday to Sunday from 5:30pm

404 PORT ROAD
FACEBOOK.COM/THEWHANGACLUB
WWW.WHANGAMATACLUB.CO.NZ
P. 07 865 8705



Richmond Villas

LIFESTYLE VILLAGE

*Living the lifestyle,
loving the choice...*

A Lifestyle Village in Thames
on the Coromandel

AVAILABLE NOW:

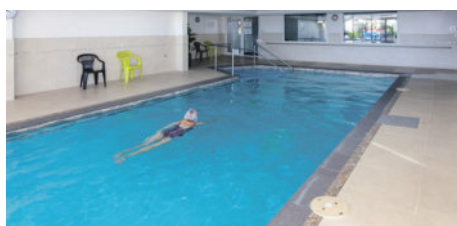
- **TWO BEDROOM VILLAS**
- **2 BEDROOM APARTMENT ON LEVEL 2**

ENQUIRE TODAY!

All apartments are within walking distance to Thames' shops, cafes and walkways. The perfect location to enjoy your fun-filled retirement.

Our open plan, single level apartments feature covered balconies with fantastic views of the sea, Kauaeranga River and mountains.

Each unit's elegantly finished kitchen, lounge, bedroom and bathroom offer stylish warmth and light. All residents enjoy scenic views from each level's shared lounges, use of the Village Community lodge and participation in all activities and amenities at your leisure.



**Phone us
to view by
appointment**
*Come and experience
the difference!*



82 Richmond Street, Thames
0800 868 5484
www.richmondvillas.co.nz

Earthwatch Whangamata also oppose mining

Have you heard of Earthwatch Whangamata? We are a local community group which advocates for our environment.

First established in the early 1990's, the group fought hard to prevent a gold mine in the Onemana/Pokohino area, and we succeeded.

We oppose gold mining because we know that there is enough in recycled e-waste to service our needs - without taking more out of the ground.

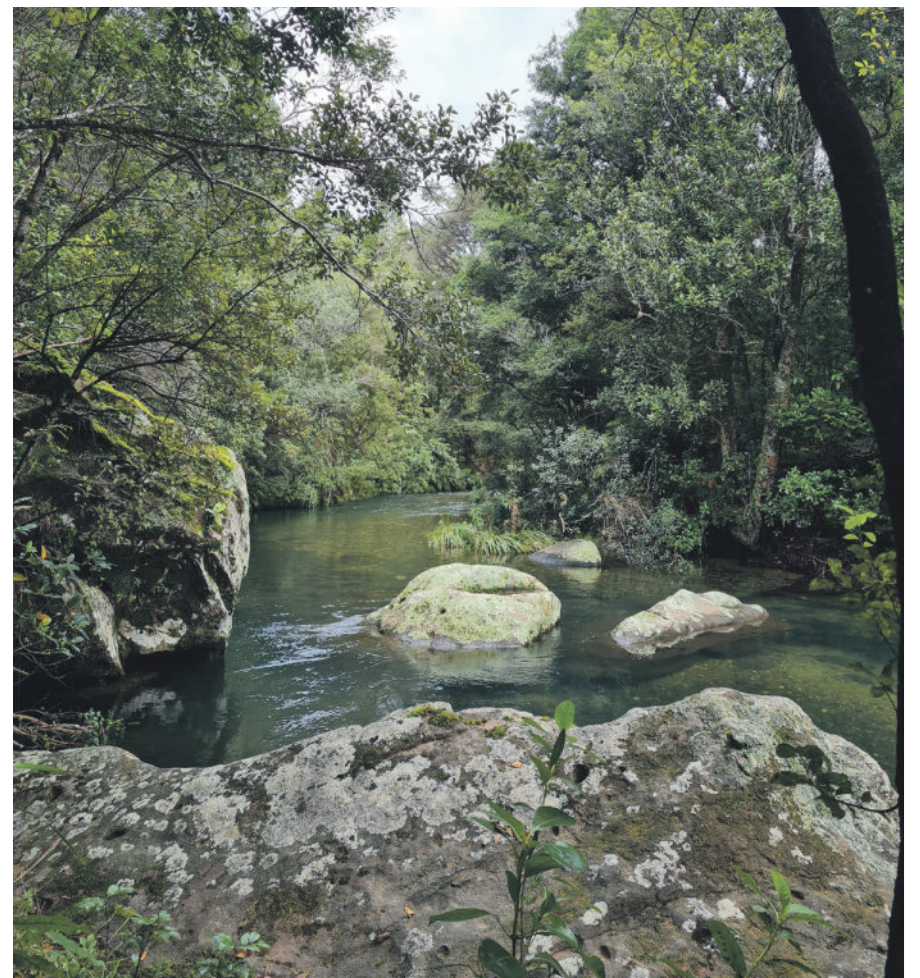
We have recently re-formed because the threat is even greater now, with overseas miners getting a foothold in the Parakiwai, the Wentworth and to the north and west of Whangamatā, right to the edge of our town.

Gold mining, in open pits and underground, poses significant risks to our local environment

and way of life. The mountains are connected to the sea, the Wharekairauponga drains into the Parakiwai, the estuary, and into our sea. The Wentworth joins the Moana Moana River flowing into our harbour. Toxic mine waste could potentially poison our water supply, rivers, fish habitats and pollute our ocean.

If you are interested in finding out more (and jumping in for a protest or two!), please join our local group via facebook, instagram (Earthwatch Whangamata) or email earthwatchwhangamata@gmail.com. We will keep you up to date with the latest news and what we need to do as a community to stop gold mining in and near Whangamatā.

Make sure you read the article next to this story about the Fast-track Approvals Bill and how this could affect us. There's no time to lose!



ROOFING

LOCALLY OWNED & OPERATED

For: New roofing | Re-roofing
Continuous spouting | Metal fascia
Downpipes

CALL US FOR YOUR FREE QUOTE

Geordie Walden: 022 396 4143

ccspouting@gmail.com | www.ccspouting.co.nz

Fast-track: What actually is it?

According to recent polling by Greenpeace, only about half of our community know what the Fast-track Approvals Bill, currently before Parliament, actually is. So, for those who don't...

As part of their coalition agreement, New Zealand First proposed a Bill to fast-track projects. They are promoting it as a much needed piece of legislation that would speed things up.

Odd, because we already have a fast-track option, brought in by Labour first as a stimulant for post Covid rebuild, particularly of core infrastructure-type development. It was a process that enabled a certain leapfrogging of RMA processes.

So, what's the big difference? The current Bill goes much further than simply streamlining RMA processes for big developments; it avoids almost every environmental law we have; as well as trumping the RMA, including things that, for example, are prohibited (like in a District Plan) the bill overrides more than 12 other laws including the Conservation Act and Wildlife Act, the Crown Minerals Act and even the Public Works Act (that's the one that allows the Government to take your land to build things like roads).

It shuts out all communities from decision making, fails in the Crown's obligations under Te Tiriti o Waitangi and gives extraordinary decision



Coromandel Watchdog of Hauraki arrival MFN 2024.

making power to three ministers and small panels.

The time-frames it would enable a significant development like a mine to be consented in are woefully inadequate for the scope to the decisions that will need to be made – a mine could be fully consented from proposal to Mining Permit to operating consents within six months.

And the many of the costs of these consents, the obligations for monitoring and compliance, etc., will continue to rest with our Councils – so us ratepayers. As would liability for poorly considered consents having negative outcomes for our communities, and our environment.

One of the core concerns we want to highlight is the proposal to take away Kiwis rights to have a say. The only people who would be invited to comment would be landowners and those immediately next-door - no one else. Not individuals and people who have lived in their towns and communities for generations, not organisations of experts in the very features that make our beautiful country globally unique, not mana whenua and iwi, hapu, whanau who have more than just a shallow understanding of the mountains rivers and ocean to which they whakapapa, not even Councils and other local authorities who have been managing their places for decades.

The opposition to the Fast-track Approvals Bill is growing as more and more people understand it, or at least begin to realise just how far reaching it is, and how much in contrast to the 'keep local decisions local' rhetoric of the election campaign it is.

People from across the political spectrum are uniting to say no to this Bill that threatens to change not just our natural environment, but also our society, and our right to have a say in the big developments that will affect not just us, but future generations.

Whangamatā News thanks Augusta Macassey-Pickard, of Coromandel Watchdog of Hauraki for this submission of clarity.

Mental health therapy groups



Learn and practise mindfulness-based activities to improve your mental health wellbeing. Come along to FREE kanohi ki te kanohi / in person therapy groups run by a trained health professional.

Attend a group

Thames: Thames Community Centre, Thursdays, 9-10am

Coromandel: CILT building, Wednesdays, 11.30am-12.30pm

Whangamatā: War Memorial Hall, Fridays, 11am-12pm

Paeroa: Paeroa Care House, fortnightly Tuesdays, 10-11am

Colville: Colville Junction, fortnightly Wednesdays, 2-3pm



To attend, contact Maraia Parangi on 027 375 3017 or fill in our self referral form at: www.pinnacle.co.nz/information-for-patients.

Fire Station playground not fit for play

Whangamatā News went to see the state of the playground behind the Whangamatā Fire Station and, disappointingly, it's beyond a disgrace.

The large mats surrounding and under play gym equipment has lifted, uneven, missing, rotting, the slide has gone... due to removal and unsafe, there is one seat intact at the table, with the other missing, nasty exposed steel underneath, the climbing ladder also unsafe, no fencing, a board up against the tower level and the list goes on...

We do know the Community Board were keen on alterations to make it more suitable for users both able and capable as well as those with disabilities.

Neighbouring residents to the playground Ralph and Doreen Pitcher, told us originally the Lions group built it with a flying fox - but that was deemed too long, so then again rebuilt with the assistance of the Cedarwood Motel (next door) many years ago.

Asking our Deputy Mayor, Terry Walker for comment as we went to print, he stated " It is disappointing



not to have this project (Fire Station PlayGround) in the proposed LTP and we will be trying to get this project into the annual plan. The fire station playground is getting beyond its life and needs a replacement that includes using the local school kids to help design while considering shade and seating for adults".

Whangamatā News understands that the Onemana Playground however, has been funding allowed in the LTP, which will be released

this week.

One would ask where the original monies from the LTP in 2019 of approximately \$156,000 for the Whangamatā Fire station playground has gone?

Needless to say, we know children are still using the old piece of playground behind the fire station, personally I think it should be closed now.

- Jennie Black



Generous donation to Whiritoa clubhouse

Whiritoa Lifeguard Service first identified the need for a new clubhouse in 2021, after a nationwide survey of surf lifesaving facilities across New Zealand, undertaken on behalf of SLSNZ, showed the Whiritoa clubhouse was in poor condition and past its useful life.

Now, the project is slowly starting to take shape, as Whiritoa Lifeguard Service engages with the community. Facilities manager Patrina Kerr said the new project had a budget of about \$5 million and was likely to be completed by the end of 2026. The SLSNZ survey said Whiritoa's existing facilities did not meet the needs of the club due to the condition, capacity, and layout. A complete rebuild of the main club building was recommended.



UPDATE FROM THE SURF CLUB

A huge thank you to Babbage Consulting for their very generous donation of \$15,000 to the Whiritoa Lifeguard Service rebuild project. Babbage Consultants is a 100% New Zealand-owned multi-

disciplinary practice that offers tailored consultancy services across Architecture, Engineering, Land Development, Environmental, and Project Management.

We extend our deepest gratitude for their contribution, which is

pivotal to our efforts in rebuilding our new clubhouse. Donations such as these are gratefully received and are absolutely essential to the viability of our plans. They provide vital momentum to our fundraising efforts, allowing us to take significant strides toward our goal.

We would like to challenge other businesses to join with us, as Babbage Consulting has done, in supporting this vital cause. Your contribution, no matter the size, will make a real difference in our community. Together, we can ensure the safety of our club members and beach visitors. Let's unite in rebuilding for a brighter future.

And just last week, along came another gift, we would like to thank Candace and Lyle who have donated a TV to the club. Your support is greatly appreciated.

Bazz Howie gives insight



There was a great turn out for the Baz Howie Breakfast on 14 June at Smash Pipi.

It was a wet Friday morning but we had a great attendance with coffee and breakfast provided by Smash Pipi.

Baz Howie, Bullion and Crypto Guru gave an insightful, fascinating talk about the world of Crypto, explaining Blockchain (safer,

cheaper and more secure transactions), Dash (digital cash), Staking (savings) and Defractional finishing with a great segway into investing in Gold, Silver and Platinum. He is an experienced analyst with a wealth of knowledge in this specialist subject. When he is not dealing in bullion and crypto he is wheeling his Harley Davidson motorbike with his other business Bularangi Motorbikes Rentals and Tours.

Come and hear monthly speakers brought to you by your local Business Association.

If you're not a member, join now!
www.whangamatā.org.nz



Preserving Papātūanuku

To honour Papātūanuku and our environment, the tamariki of Ōpoutere kura undertook a whole school planting project in the school ngahere (forest).

With funding from the 'Billion trees fund' through Waikato regional council we were able to purchase 500 native trees to restore our ngahere which was damaged early last year due to cyclones Hale and Gabrielle. The ngahere is *the* favourite play area for our Ōpoutere tamariki so this quickly became a child led project in which our Enviro group took over the planning and implementing of our planting day.

The enviro group consisting of a full range of ages from the school undertook soil testing, tree identification, measuring and calculating to figure out how many trees and what species were



needed. They then consulted the Maramataka (luna calendar) to find a suitable planting day, June is considered an excellent time for planting under the Maramataka, so that coincided beautifully with world environment day on 5 June.

As always we couldn't have carried out this day without help from our wonderful community so we must give a huge shout to them all. Firstly, Warren at Waihi native plants for his expertise and time in selecting plants and their delivery. The amazing crew at Bunnings especially Amber and Katrina for organising extra funding and coming out to do a bang up job (literally) of building us two lovely planter boxes. Barney O'Neill from O'Neill engineering for his hole digging expertise and supply of fruit to sustain us. Joeline Buchan our EnviroSchools facilitator for being with us from start to finish on this project. Craft Haus Whangamatā

for supplying the sausage sizzle goodies and the ever awesome boys of Onemana fire brigade for cooking and feeding our tamariki afterwards who had certainly worked up an appetite. And last but not least our wonderful whānau who continue to show up and support us on our planting haerenga (journey), your commitment to your tamariki and their learning is next level!

The planting of this many trees will take approximately 30 tonnes of carbon from the atmosphere and of course greatly increase the biodiversity of our native area woohoo! The day was a huge success with our ngahere now set to be restored to its former glory in the next 10 to 20 years and with the addition of a Pa Harakeke (a natural flax playground). It also ensures that all future generations of children who come through our doors will be able to continue creating connections with te taiao

(the environment) and you couldn't really ask for more than that!

– Natalie Keogh
Enviro leader at Ōpoutere kura



\$1 WINGS WEDNESDAY

from 4:30pm until sold out

FULL SIZE BUFFALO WINGS!!

\$1 PER WING!!

Dine in only

conditions apply

Pasta Thursday

ANY HAUS PASTA & EITHER A PINT OF TAP BEER OR GLASS OF HAUS WINE

Only \$23

Conditions apply

FRIDAY@ CRAFT HAUS

\$10 PINTS any PROPER PINT tap beer

\$10 PIZZAS any house pizza

AFTER WORK SHOUT

2.30PM TO 5.30PM

SHELLFISH SATURDAY

GRAB 1KG OF NZ GREENLIPPED MUSSELS W GARLIC BREAD + A PINT OF TAP BEER OR GLASS OF HOUSE WINE

ONLY \$25

CRAFT HAUS

The perfect place for your function.

BOOK YOUR FUNCTION IN OUR GARDEN BAR NOW!

PHIL@CRAFTHAUSWHANGA.CO.NZ

Follow us on Facebook & Instagram to keep up to date with all our events & deals @crafthauswhanga

CRAFT HAUS

Gastropub Est. 2022

711 Port Road, Whangamata
@crafthauswhanga
www.crafthauswhanga.co.nz
07 865 6300

WHANGAMATĀ NEWS COUCH TO 10KM

Win a \$300 shop at New World



For most people, choosing a fitness goal and making some personal changes is hard enough. If you're also juggling four kids plus family meals with dietary restrictions, it's easy for good intentions to derail.

For Liam and wife Tash, they've found the best way to stay on track is to have a meal plan. Thanks to New World Whangamatā, the couple took New World's online meal planner for a test drive with \$300 of New World vouchers for dinners for the family of six.

"It was actually really easy. Once you pick the recipes, it makes a shopping list of what you need to make them. You can take things off your list if you already have them at home," explained Tash.

Whangamatā health coach and nutritionist Michelle Gilbert also took a peek at the New World recipe selection, and had a few tips.

"Add vegetables to recipes any way you can, you can't overeat on a plate of greens. Adding nuts and seeds to salads will help them to feel more satisfying," suggests Michelle.

Liam is not convinced nuts and seeds are satisfying! Three weeks into quitting energy drinks cold turkey, and completing three training runs each week, he admits he's been dreaming about sausage rolls.

We asked Michelle what else Liam could add to the trolley to keep away from the pies.

"Apple and a small handful of nuts, nashi with a small piece of cheese, full fat yoghurt and berries are all good snack options.

"Fueling yourself before working out is also important; carbs half an hour before - like oats with peanut butter and honey, toast with peanut butter and banana. There is a golden hour after exertion which is the best time to eat pasta and rice if you've been missing them," advises Michelle.

Check out Liam and Tash's New World meal plan (complete with tips from Michelle) on the Whangamatā Half Marathon Facebook page www.facebook.com/whangamatahalfmarathon New World Whangamatā have a \$300 voucher to give away to celebrate Liam's progress in the Whangamatā News Couch to 10km.



G.J. Gardner. HOMES

WHANGAMATĀ
HALF MARATHON 10K & 5K

ENTRIES OPEN 28.09.2024 – RUN or WALK

G.J. Gardner. HOMES

Whangamata Real Estate

thinkwater. WHANGAMATĀ

Love your view

fairview
EXCEPTIONAL WINDOWS & DOORS

WHANGAMATĀ
07 865 8919
www.fairviewwhangamata.nz

To be in to win, head to the G.J. Gardner Homes Whangamatā Half Marathon facebook page and leave a comment with your favourite New World recipe, or a New World recipe you'd like to try. You can browse recipes at www.newworld.co.nz

Comments received by Friday, 28 June, will be in the draw to win. The winner will be announced in the following issue of the *Whangamatā News*, out Friday, 5 July.

Auto SUPER SHOPPES
NZ's PREMIUM AUTOMOTIVE CENTRES

Whangamata SERVICE CENTRE

Full Mechanical Repairs, Lubrications and Services, WOFs, Tyres, Tune ups, Batteries, Wheel alignments, Diagnostics.

Scan Tool.

AA Breakdown services

First Assistance Breakdown services

P. 07 865 9435 • 201 Aickin Road, Whangamata
M. 027 608 5770 • E. wgmssc@extra.co.nz



SMS ACCOUNTANTS & ADVISORS

SMS Accountants & Advisors are a local Certified Public Chartered Accounting practice offering accounting, taxation and business advisory services to small and medium-sized businesses.

Taking pride in being a small firm with a focus on providing a personal touch that larger firms are unable to offer. We have built strong relationships with all our clients due to regular communication and an unparalleled understanding of their business. We have extensive knowledge in accounting and business advice gained from working for top accounting firms and previous career experience as business advisors.

We are passionate about growing with our clients as we focus heavily on the advisory side, not just preparation of tax returns which makes us a standout compared to other local accountants.

Stacey, the driving force behind SMS Accountants & Advisors, also owns a local business with her husband with a team of six employees so has firsthand experience of managing staff, cashflow and assessing investment opportunities.



So, if you feel like you aren't getting the attention you deserve from your accountant, please get in touch for a confidential chat.

Stacey Shearman
Chartered Accountant
BAGSci(Hons), GDipPA, GDipCA

Phone 027 625 7177
stacey@smsaccountants.co.nz
www.smsaccountants.co.nz



We would like to introduce ourselves – the Capelli Team: Maria Blunden, Kiri Kohu and Jane Coffey.

We are three experienced Hair Stylists, mums, wives, and business women, who have teamed up to open Capelli Hair and Beauty. While we all have different strengths and backgrounds, we are all equally passionate about providing an exceptional client experience, through offering a quality service in a beautiful environment. Our new salon offers fresh new decor, high quality professional products, and all the little touches that will make your hair appointment extra special.

We love living here in beautiful Whangamatā, with our families, and we are excited to be a part of the local business community. We are looking forward to continuing to serve our long term clients, as well as meeting new members of our awesome community. See you soon!

Capelli
HAIR & BEAUTY

07 865 6504
6/800 Port Rd, Whangamata
@CapelliWhangamata
@CapelliHair&Beauty

MEET YOUR LOCALS

Spending your money locally helps stimulate our local economy, creates jobs and helps our community grow.



**KATRINA WOOD
ACUPUNCTURE**

& Natural Therapies



I am a doctor of Chinese medicine (Acupuncture and Herbal tinctures), classically trained in Australia and China with extensive postgraduate study.

Following the philosophy of Eastern medicines, I treat the mind, body and spirit as a whole. You don't have to be in pain to have acupuncture (but if you are, I'm ACC registered).

Some of the conditions I treat on a regular basis include autoimmune diseases, fibromyalgia, digestive issues, depression and anxiety, period and fertility concerns, chronic fatigue, side effects of chemotherapy and stroke recovery.

Katrina Wood BHSc TCM. ACC Registered.
Online booking available through my website:
www.katrinawoodacupuncture.com
320 Casement Road • 0274 496448



vega

Natalie has worked in the Financial Services industry for over 20 years, specialising in Accounting, Business Administration and Processes. Natalie has earned a Diploma in Accounting & Certification in Financial Advice – Residential Property Lending LV5 qualifications.

Confident in her ability to help you on your financial journey, Natalie aims to help you get the best value outcome for your mortgage choices, by helping first home buyers, homeowners, and investors to plan and secure a loan or solution that suits their budget and goals.

Your mortgage, your way!

- First Home Buyers
- Next Home Buyers
- Pre-Approvals
- Investment Properties
- Restructures
- Refinances
- Rate Refixing
- Top Ups

Natalie Hughes | Mortgage Adviser
029 770 3516 | natalie.hughes@vegalend.co.nz

f nataliehughesmb in natalie77

Volunteering week

National Volunteer Week 2024 runs from 16 to 22 June. This year's theme is 'Whiria te tangata – weaving the people together'.

Volunteering weaves us together, strengthening the fabric of our community. Volunteering brings satisfaction, joy, reward, an opportunity to network with like-minded people, and a chance to bring your professional or community skills towards a good cause.

We are thankful to have a group of dedicated volunteers at Eastern Coromandel Community Services Trust, playing a crucial role in the services we provide. Each volunteer offers their expertise, time and energy to support and enrich our



community.

Our volunteering roles include Medical Drivers who support families to hospital appointments; Comfort Kai – the planners, creators and servers of delicious weekly community meals; our fantastic helpers during our annual food drive

and our Board of Trustees, which is made up entirely of volunteers.

They are from the community, for the community and commit to manaakitanga and whakawhanaungatanga. They commit to caring, and to building meaningful, enduring and inclusive relationships.

If you have ever considered volunteering, then we would love to hear from you. We are especially looking for medical drivers to join the team. Medical Drivers provide transport to DHB medical appointments in Thames and Hamilton. Volunteers are provided with fuel vouchers: \$130 for Hamilton and \$60 for Thames. You will need your own car, and a full



driver's license, current WOF and rego are required.

For queries and applications, please contact 07 865 7065 or email: info@communityservices.org.nz

Finn – grower of Whanga Greens

Finn Foster, of Whangamatā, is a new entrepreneur. At just 12 years old, he has developed Whanga Greens in his parents garage. Home schooled by his Mum, Kylie, Finn has an abundance of beetroot, coriander, sangria, three types of radish and peas.

Finn started his project just 6 weeks ago, starting with trials, and now with multiple shelves, lighting and recently adding fans to push the air around, to assist disease control, he really has green fingers.

Finn told us "I was looking for a job, and I couldn't find one, my Dad,



(Greg) had experience with this", so using differing sizes of containers, he offers them to potential clients, he hasn't been to the markets, but he doesn't want to be a competitor to another larger micro green grower. He has been getting his wee greens to locals at some of our local clubs and cafés. Finn tends to keep things more specialised, so he can

turn around product like beetroot and coriander within two weeks.

I found them quite super natural looking, I had a nibble on the coriander - and whoa so much flavour, Finn is also creating salad mixes with his greens to fresh lettuce leaves, you will see him on Facebook and his website is underway very soon.



When asked about his biggest challenge, Finn told us "harvesting beetroot, but the most enjoyable is cutting greens more easily harvested, and of course getting paid!"

He has built this into part of his school day, and incredibly he is doing his own book of accounts and recording sales for the business.

Mum, Kylie, tells us "He has always been such a fantastic worker, he just gets in there and gives everything a really good go, he is a forward planner, always thinking what the next few steps are."

If you want to try Finn's stock, simply order now by calling Mum Kylie on 021 155 3557.

– Jennie Black

FLOORINGXTRA.CO.NZ

FLOORING TO SUIT YOUR STYLE

CARPET • VINYL • TIMBER • LAMINATE • RUGS

Phone or email us! We're measuring & laying! View samples instore!

WHANGAMATA FLOORING XTRA

Whangamata | 636 Port Road | 07 865 8562 | whangamata@flooringxtra.co.nz

CARAVAN FOR SALE

Jayco 28 Foot 2002 – VIEW LOCALLY

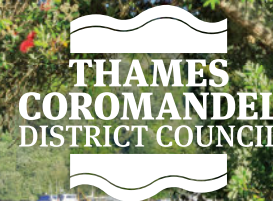
AFFORDABLE TINY HOME!

Totally renovated, new carpet, vinyls, repainted interior, shower, toilet, double bed, oven, microwave, it really is chic! All the extras!

Contact 021 0232 1661

Our Coromandel

News from Thames-Coromandel District Council



21 June 2024

Whangamatā Stormwater project

The township of Whangamatā has been facing stormwater issues. Our Council is conducting a stormwater modelling exercise to identify the problems and necessary remedial work.

\$9.2M has been sought through the 2024-34 Long Term Plan to address these issues. If approved, work will begin in July 2024.

We have been collaborating with Whangamatā community representatives, the Community Board, Council members, and local iwi. We appreciate everyone's input and will continue these efforts.



Site works have started at Williamson Park pond to drain stormwater quickly and prevent ponding. The project will be done in three stages. Stages 1, 2, and 3a will be completed by early July, with monitoring during major storm events. If discharge water quality is unacceptable, Stage 3b will be implemented.

Some trees adjacent to the pond will be removed as part of the project.

Stages:

1. Upgrade the outlet weir.
2. Construct new manholes with a sediment capture system at the inlet.
3. Pond area:
 - Stage 3a: Create a dry pond by filling the existing pond to allow direct water flow to the weir and out to sea.
 - Stage 3b: If needed, convert the dry pond into a wetland to improve water quality before discharge.

We thank everyone who attended the public meeting on 31 May at Williamson Park pond and look forward to ongoing community engagement.

tcdc.govt.nz/whangamatastormwater



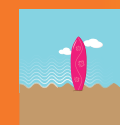
Hauraki Coromandel BUSINESS AWARDS

Applications are open for The Richardsons Hauraki Coromandel Business Awards. The awards are delivered biennially by Hauraki and Thames-Coromandel District Councils and supported by members of the business community.

The awards celebrate excellence and creativity in the business sector, offer an opportunity to gain recognition for your organisation and the chance to benchmark and gain expert advice on how your business can continue to prosper.

Award categories and application information are available at www.hauraki-dc.govt.nz/community/business-awards

Mark your calendars for the gala evening on Wednesday, 23 October at the Thames War Memorial Civic Centre, 200 Mary St, Thames.



Whangamatā Community Board UPDATE

A word from our Deputy Board Chair, Denis Beaver –



“In our latest meeting, we discussed the proposed installation of a zebra crossing near the junction of Martyn and Aickin Road, due to safety issues. We’ve asked our Council to investigate some additional locations and deferred the decision on the crossing. We look forward to reporting back on this at our next meeting.

We’re also looking forward Matariki on Friday 28 June. It’s not just a day off work, but a chance to spend some extra time with whānau and friends. We’ll likely have a few extra visitors to our ward over that weekend, so stay safe on the roads and get out there and support local.”

denis.beaver@council.tcdc.govt.nz

AA SERVICES EXTENDED TO END OF 2024

There’s good news for our residents of Whitianga and Whangamatā. Waka Kotahi has announced that its twice-monthly mobile AA services in the two centres will continue for the rest of 2024.



AA’s mobile unit can complete all the transactions that are done at the Thames counter with the exclusion of motor vehicle registration and plate transactions:

- All driver licensing transactions (except overseas conversions)
- AA Membership renewals and new joins
- RealMe Identity verification
- IRD personal number applications
- SuperGold – image request for card
- International Driving Permits
- Passport Photos

Both the Whangamatā and Whitianga Community Boards submitted letters of support for the extension. aa.co.nz

MATARIKI

WHAKANUIA TE PAKI O MATARIKI KI HAURAKI

CELEBRATE THE WIDESPREAD CALM OF PLEIADES IN HAURAKI

Our Council service centres are closed on the Matariki public holiday, Friday 28 June.

MATARIKI KERBSIDE COLLECTIONS

On the Matariki public holiday, Friday 28 June, Rubbish and Recycling Transfer Stations (RTS) will remain open as usual (from 8.30am-4.30pm).

Red week kerbside collections of rubbish and food waste will take place on the usual days from Monday 24 June – Thursday 27 June.

The week after Matariki, the usual yellow week schedule for recycling bins, glass crates and food waste will resume.

Check out your calendars at tcdc.govt.nz/bindays or pick up a copy from your nearest Council office.



It's time to register your dog



Register online or in-person by 1 August to avoid penalties.

tcdc.govt.nz/dogs



[@ThamesCoromandelDistrictCouncil](https://www.facebook.com/ThamesCoromandelDistrictCouncil)
[coromandel_tcdc](https://www.instagram.com/coromandel_tcdc)
Get our free eNewsletters!
www.tcdc.govt.nz/subscribe

tcdc.govt.nz

customer.services@tcdc.govt.nz
Private Bag, 515 Mackay St, Thames
Phone: 07 868 0200

TDCCLJUNE24

Netballers brave freezing night

Whangamatā News is passionate about young sports people. Netball on a very cold Waihi night on 11 June saw some great ability. There is a village of amazing volunteers, coaches and managers who make it all happen. We applaud them, netball grounds young people, makes memories and grooms young adults. Keep up the keen competition!

- Mark James Photography



Results

Waihi Netball Centre: Tamawhariua Wildcats **30 vs 11** Whangamata Netball Club: Whangamatā Vixens
Whangamata Netball Club: Whangamatā outlaws **23 vs 3** Waihi College: Year 9 Development
Waihi East School: East Kauri **2 vs 2** Whangamata Netball Club: Mini Mystics

Rugby juniors – so much energy



Results

Whangamatā Year 3
lost to Paeroa

Whangamatā Year 4
45 vs 40 Waihi

Whangamatā Year 5
90 vs 0 Waihi

Whangamatā Year 7
48 vs 17 Te Aroha

Whangamatā Year 8
26 vs 30 Hauraki Plains



Whangamata win late in Coastal clash

There was a bumper crowd and scintillating rugby at the rugby club on Saturday as Whangamata played host to three matches, starting with the Area School 1st XV followed by the two senior sides.

The Senior As hosted Mercury Bay in one of the closest, toughest-fought Coastal Shield games in recent memory. With All Black Aaron Smith in their coaching staff, the visitors' ferocious defence had the hosts scrambling and once they got the opening try their tails were up. They added two penalties and looked to be going into halftime

with a comfortable buffer, but Whangamata were patient in building phases and scored two tries to take a 17-13 lead.

Whangamata came out firing after the break as they stormed up field and scored on the back of a run by Tupou Tonga. Mercury Bay responded immediately with two penalties kicks but Red n White skipper Jake Barfoot scored an important try to wrestle back momentum.

The game was fast-flowing and hardly could the crowd catch their

breath amongst the excitement. Mercury Bay inched their way back, first with a penalty, then a try off an unstoppable rolling maul, before tying the game at 31 all with ten minutes to go.

It was all on from there as both teams battled for supremacy. Whangamata got themselves onto Mercury Bay's line and it looked for certain they would score until a dropped ball gave the visitors reprieve. The ball was cleared and Whangamata had to start again. The ball found its way to little winger Tyler Cotterill running out of room

against the touchline and his miracle in-field grubber found Brian Murphy who just had to land on the loose ball and score the try.

That he did and Whangamata hung on in a game that pushed them right to the brink. It marked a successful day for the Seniors after the Bs defeated Waihi 29-19 earlier in the day. As they head to Thames next week looking to cement third spot in the table while the Bs host a strong Coromandel side.

- Whispering Will, Roving Sports Reporter to Whangamata News

Senior A



Senior B

Senior Bs decisive win
29 vs 19 against Waihi
- way to go!



First XV

It was a tough match against Paeroa with the final score Paeroa 58 vs 14 for our First XV, who fought to the very end.



WALKER
Fast, Easy, Beautiful Mowing

**Prescotts Garages are now your local
Walker Dealer providing sales & service**

Introductory Special

R21 42" cut with a
free mulch kit fitted

\$13,995 inc gst



Demonstration Machines available call us to try one out



Shaun Prescott, Sales Manager
021 285 4870 / 07 864 7801
1 Hikuai Settlement Road, Hikuai
www.prescottsgarages.co.nz

Pool legend Rocky Lane returns to Coromandel

Rocky Lane was raised in the Coromandel Peninsula, where his father was a farmer at Hot Water Beach and attended Whenuakite Primary in the 1950s. Now, in his mid 70's, he says "The Peninsula is a great retirement spot for me." He is now currently residing in Whitianga.

The world's fastest man on a pool table, jump potting and clearing the table in only 11.29 seconds and the only pool player in world history to be officially featured on a national postage stamp.

New Zealand's own Rocky Lane, having been abroad 34 years, as a law graduate worked in the legal profession as general counsel for large corporates and some law firms, he took a hiatus to turn pro and played the world pro tour from 2009 to 2013.

Playing the world pool pro circuit, based out of Asia, he was fully



sponsored by Air Macau offering free business class to compete at world tournaments. Rocky says "The game has taken me all over the planet, like, USA repeatedly, Euro tour and the Asian tours and even played the Kremlin tour in Russia."

Rocky never won a professional tournament although he reached top 16 in some of them, but he is iconic for his two world records,

something that even the household name players in the game have attempted to defeat and failed. There is no one on this planet who can reduce below 11.29 seconds, as seen at YouTube and www.rockylane.com.

Rocky set his world record on 25 October, 2005, in New Zealand at 14.16 seconds. Then, after many attempts and failures by other professional players, Rocky returned and defeated his own world record on 27 January, 2013, reducing it as low as 11.29 seconds.

It's believed in the billiard world that when done pursuant to the registered pre-attempt plan that was filed at Guinness World Records, this is a record that the world that may never be defeated.



Rocky is famous for the slogan that he shares with the younger generation: "Shoot pool, stay cool, but do school."

Many thanks to Rocky's wife, Addie Lane, for getting in touch with Whangamatā News!

Artful Insights

The Whangamata Arts Collective column 'Artful Insights' is a monthly snapshot of creative initiatives happening in our community. If you have an event, an exhibition or something artful to share please contact Clare 027 479 8185.

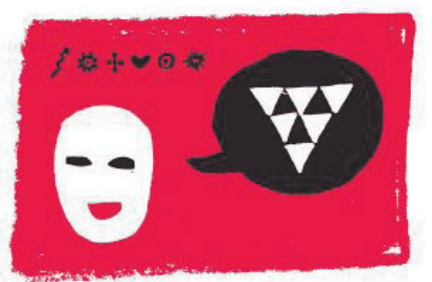
Local Arts Collective members artwork will be exhibited in the foyer and restaurant at the Whangamata Club in June, so take time to visit the club and take a look at what is on display and for sale. If you are interested in becoming a member or exhibiting your work please check out our website on www.artscollective.co.nz or contact Janice on 027 698 8088.

Celebrate Matariki 28 & 29 June. The Arts Collective in conjunction with the Whangamata Marae are planning a range of activities for



the whole family. Bring the whanau along to the Memorial Hall to learn about Matariki, there will be hands-on activities for the whanua to enjoy including kite making, colouring & design work, building clay stars, felt & fabric fun, harakeke and whakairo. All activities are free thanks to volunteers and funding from our Community Board.

Creative Coromandel Conversations



3rd July at 5.30pm - 7.30pm to be held at Edisons, Cinema Lane, Whangamata. Representatives from Creative Coromandel are coming to korero with artists, creative organisations and community to know more about our creative mahi and share new initiatives. We are mindful of the crucial role played by arts, creativity, and culture in the social and economic development of the Coromandel communities,

and are determined to celebrate and strengthen these activities through this platform by encouraging collaborations and creating fresh ideas and connections.

Come along to socialise, network and connect with others. To register RSVP: info.creativecoromandel@gmail.com

Workshop Series in July. Claywork & Pottery Workshop (date TBC) All workshops are open to everyone. Arts Collective members are eligible for a discount to attend workshops & exhibitions. If you wish to become a member of the Arts Collective please go to: www.artscollective.co.nz/membership

Huge congratulations to Rin Otsubo, Whangamata Area School student and winner of the Secondary School Art Award held recently.

WHATS ON AT SMOKY PALLET FREEHOUSE

MON	TUES	WED	THUR	SUN
<p>\$15 FISH N CHIPS</p>	<p>\$2 TACOS</p> <p>EVERY TUESDAY TILL 7PM</p>	<p>SMOKY PALLET QUIZ NIGHT</p> <p>EVERY WEDNESDAY 6PM</p>	<p>\$20 BURGER N BEER</p> <p>SMOKY PALLET EVERY THURSDAY</p>	<p>KIDS EAT FOR FREE SUNDAYS</p> <p>SMOKY PALLET FROM 5PM SUNDAY ROAST</p>

Conditions apply*

@Smokypalletwhanga @Smokypallet



Whangamata Real Estate

LICENSED REAA 2008

07 865 8499

328 Ocean Road, Whangamata

whangamatarealestate.co.nz



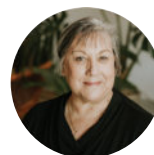
105 Avalon Place

- Situated in a quiet park-like cul-de-sac, located close to the reserve, school, and community pool
- Spacious interior includes a good-size kitchen and large open plan living area
- Three bedrooms, two bathrooms
- Double garage with internal access
- Private patio off the lounge, an ideal spot to enjoy the morning coffee
- This solid brick & tile beauty offers durability and minimal maintenance

View 12pm Saturday 22 June

View 12pm Saturday 29 June

View 12pm Sunday, 30 June



Nancy Millett
021 517 708

View Listing: whanga.co/8342



120 Onemana Drive, Onemana

- Charming seaside property with ocean views and great sun aspect
- The expansive deck area provides an excellent place to entertain
- Retractable electric sunshade extends the indoor/outdoor living
- Three bedrooms, master with ensuite
- Open plan kitchen and dining, spacious lounge with cosy wood burner
- Gorgeous sun-drenched sunroom
- Double garage internal access
- A flat walk down to Onemana beach, tennis courts and cafe
- Suitable for permanent living

View 2pm Saturday 22 June

View 2pm Saturday 29 June



Sarah Speedy 027 843 4013
Julian West 027 222 4364

View Listing: whanga.co/8339



104 Titiro Place, Onemana

- A great opportunity and project
- This property needs some TLC, unlock its full potential and add some value
- Ocean and Island view
- Sunny and warm aspect, large deck area
- Two bedrooms, open plan living, new bathroom
- Wood burner
- Additional mezzanine / second living
- Carport and off-street parking
- Freehold 578sqm full site section

View 1pm Saturday 22 June

View 1pm Saturday 29 June



Sarah Speedy 027 843 4013
Julian West 027 222 4364

View Listing: whanga.co/8345



Whangamata Real Estate

LICENSED REAA 2008

07 865 8499

328 Ocean Road, Whangamata

whangamatarealestate.co.nz

105A Lindsay Road

- Prime industrial development opportunity
- These sites are rarely available and are very limited
- Freehold 3032m² of level contour land
- Wide road frontage with direct street access
- Arrange for an inspection or further information

Auction 1pm, 21 June 2024 at 328 Ocean Road, Whangamata (unless sold prior)

View by appointment



Colin Thompson
021 723 723
colin@whangamatarealestate.co.nz
View Listing: whanga.co/8341



131B Tangaroa Road

- Across the road to beach front, surf and sand
- Dual bathrooms - one on each level
- Four bedrooms and two lounges / extra family room
- Open plan living well connected to deck and outdoor living
- Excellent internal access lock up / storage
- Peeps of ocean and Mayor Island

View 1pm Friday 28 June

View 1pm Saturday 29 June

Auction to be held 328 Ocean Road, 1pm 20 July 2024 (unless sold prior)



Sharon Laurenson
027 662 3164
sharon@whangamatarealestate.co.nz
View Listing: whanga.co/8353



113D Ngati Pu Place

- This is a great family home with some excellent spaces and features
- Three double bedrooms, two bathrooms
- Open plan lounge dining area well connected to outdoor decks
- A large second lounge is a perfect media room, or games room
- Expansive north facing decks
- Double garage / workshop with its loft storage area
- Ample off-street parking for boat or motorhome
- Fully fenced and gated

View 11am Saturday 29 June



Sharon Laurenson
027 662 3164
sharon@whangamatarealestate.co.nz
View Listing: whanga.co/8346





Whangamata Real Estate

LICENSED REAA 2008

07 865 8499

328 Ocean Road, Whangamata

whangamatarealestate.co.nz



642 Port Road

- The property is located within the hub of the Whangamata town centre
- The ground floor provides two commercial tenancies, both with staff facilities
- 2x main street stores, each with a 3-year lease term plus 2x 3-year renewal rights
- The first floor provides a modest two-bedroom flat

View by appointment

Deadline Sale closes 3pm, 27 June 2024 (unless sold prior)



Chris Speedy 021 747 901

Katie Speedy 021 382 022

View Listing: whanga.co/8347



203 Port Road

- Here is an opportunity to renovate or develop this large site
- 1070m2 site (More or less)
- Nicely elevated with rural outlook
- 1950's 2-bedroom, 1 bathroom dwelling
- Settlement will be upon issue of new Title

View 11am Saturday 22 & 29 June

Deadline Sale closes 3pm, 4 July 2024 (unless sold prior)



Chris Speedy 021 747 901

Katie Speedy 021 382 022

View Listing: whanga.co/8350



205 Port Road

- 839m2 site (More or less)
- Nicely elevated with rural outlook at rear
- 1950's 2-bedroom, 1 bathroom dwelling (re-sited in 1979)
- Gas hot water
- Settlement will be upon issue of new Title

View 11am Saturday 22 & 29 June

Deadline Sale closes 3pm, 4 July 2024 (unless sold prior)



Chris Speedy 021 747 901

Katie Speedy 021 382 022

View Listing: whanga.co/8349



68 Parakiwai Quarry Road

- A beautiful 2 hectare lifestyle block
- Access to Parakiwai River and bush walks further down the road
- The large 236sqm house has 3 double bedrooms plus 2 bathrooms
- Internal access double garage
- Impressive 12m x 18m man shed
- Nice level land with lots of native plantings, established plum and citrus trees

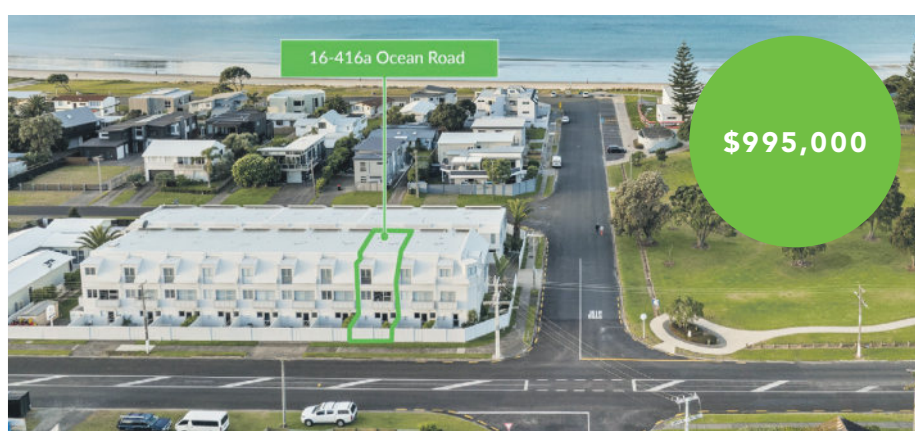
View by appointment



Chris Speedy 021 747 901

Katie Speedy 021 382 022

View Listing: whanga.co/8274



416A Ocean Road

- Envidable location offering all the best of Whangamata
- Large open plan living leading to decking with excellent sea and park views
- Three bedrooms, two bathrooms
- Carpeted tandem garage
- Outdoor hot/cold shower
- Freehold apartment with a floor area of approx 180 sqm

View 11am Sunday 23 June, 11am Saturday 29 June & 11am Sunday 30 June



Andrew McGee

021 135 5158

View Listing: whanga.co/8351



Whangamata Real Estate

WHANGAMATA REAL ESTATE 2024 LTD (LICENSED REAA 2008)



Otahu Starter

225A Otahu Road 2 1 1
• Open plan layout
• Selling fully furnished
• Low maintenance living
• Easy access to amenities
EO \$695,000
Chris Speedy 021 747 901
Katie Speedy 021 382 022
whanga.co/8330

View 12pm Saturday 29 June



Classic Beach Retreat

306B Rutherford Road 1
• Relax at the beach
• Handy central location
• Rear freehold site
• Redevelop in the future
\$740,000
Colin Thompson
M 021 723 723

View Listing whanga.co/8337



Otahu Starter

211B Casement Road 2 2 1
• Central location
• Ideal entry level bach
• Open plan living
• Outdoor entertaining space
\$760,000
Sharon Laurenson
M 027 6623164
whanga.co/8250

View 11am Friday 28 June

OPEN HOMES

SATURDAY 22 JUNE

11am 203 Port Road
11am 205 Port Road
11am 106 Waverley Place
11am 208 Russell Bruce, Onemana
12pm 102 Riverview Road
12pm 105 Avalon Place
1pm 500A Port Road
1pm 104 Titiro Place, Onemana
2pm 120 Onemana Dr, Onemana

SUNDAY 23 JUNE

11am Apt 16, 416A Ocean Road
12pm 112A Ngati Pu Place

FRIDAY 28 JUNE

11am 211B Casement Road
12pm 116B McKellar Place
1pm 131B Tangaroa Road

SATURDAY 29 JUNE

11am 203 Port Road
11am 205 Port Road
11am 221 Linton Crescent
11am Apt 16, 416A Ocean Road
11am 208 Russell Bruce Place, Onemana
11am 113D Ngati Pu Place
12pm 112A Ngati Pu Place
12pm 225A Otahu Road
12pm 105 Avalon Place
12pm 119 Chevron Place
12pm 441 Onemana Drive, Onemana
1pm 104 Titiro Place, Onemana
1pm 105B Leander Road
1pm 104B Linton Crescent
1pm 131B Tangaroa Road
2pm 611 Beach Road
2pm 423 Achilles Avenue
2pm 120 Onemana Drive, Onemana

SUNDAY 30 JUNE

11am Apt 16, 416A Ocean Road
12pm 112A Ngati Pu Place
12pm 105 Avalon Place



Little Bit of Magic in McKellar

116B McKellar Place 3 1 2
• Well presented property
• Sunny and private setting
• Ground floor living
• Peaceful cul-de-sac
EO \$975,000
Sharon Laurenson
M 027 6623164
whanga.co/8327

View 12pm Friday 28 June



Easy Living On Leander

105B Leander Road 3 1
• Tidy home or bach
• North facing living
• Spacious yard space
• Freehold 567sqm title
\$995,000
Chris Speedy 021 747 901
Katie Speedy 021 382 022
whanga.co/8335

View 1pm Saturday 29 June



Location & Convenience

423 Achilles Avenue 2 1 2
• Open plan living/dining
• Low maintenance
• Freehold site
• Next to Golf Course
EO \$1,075,000
Chris Speedy 021 747 901
Katie Speedy 021 382 022
whanga.co/8308

View 2pm Saturday 29 June



Say Hello to a Good Buy

208 Russell Bruce Place 4 2 2
• Motivated vendors
• Expansive living space
• Substantial deck
• Ocean & island views
\$1,295,000
Julian West
M 027 222 4364
whanga.co/8284

View 11am Saturday 22 & 29 June



Classic Kiwiana

302 Sylvia Road 1 1
• Prime location
• Surf Club Zone
• Large 852sqm full site
• Holiday now, build later
\$1,395,000
Chris Speedy 021 747 901
Katie Speedy 021 382 022

View Listing whanga.co/8322



Brilliant on Beverley

246A Beverley Tce 3 3 1
• Stylish home or bach
• Surf Club Zone
• Spacious living upstairs
• Saltwater pool
\$1,795,000
Chris Speedy 021 747 901
Katie Speedy 021 382 022

View Listing whanga.co/8299



Harbour and Ocean Vista

111 Te Pamahue Dr 3 2 2
• Elevated views
• Single level living
• Designer kitchen
• Second lounge
\$1,875,000
Julian West
M 027 222 4364

View Listing whanga.co/8314



Secluded Retreat

118 Brook Place 5 4 3
• Immaculate property
• + 60m2 separate self-contained unit
• Landscaped, private
• 1368m2 site
\$1,935,000
Chris Speedy 021 747 901
Katie Speedy 021 382 022
View Listing whanga.co/8325



Exceptional Harbour Frontage

611 Beach Road 3 1 1
• Expansive water views
• Open plan living
• Approx 908m2 site
• Development chance
EO \$2,500,000
Chris Speedy 021 747 901
Katie Speedy 021 382 022
whanga.co/8334

View 2pm Saturday 29 June



Live The Lifestyle

11 Titoki Lane 4 2 2
• Brand new build
• Architectural designed
• Immaculate throughout
• Adjacent to 18 hole golf course
By Negotiation
Colin Thompson
M 027 723 723
View Listing whanga.co/8283



Stroll Across to Beachfront

125B Tangaroa Road 3 2 2
• Easy access to beach
• Open plan living
• Multiple deck options
• Furniture package
By Negotiation
Sharon Laurenson
M 027 662 3164
View Listing whanga.co/8336

Sports results

WHANGAMATA RSA 500 CARD CLUB

12 June: The winner on the day was Snow Harris and he also won the raffle. Chris Hepi was awarded the chocolate bar.

TABLE TENNIS

13 June: Games played last Thursday at Whangamata Club. Our winner for the day was Wayne Broome, in second place Denise Wallace and in third place Sandra Whitmore. Some really good games were played.

Whangamata Tennis & Squash Club

Coaching Juniors and Seniors with David Banks has recommenced. Contact him on 021 865 539. \$20, up to four players.



Lions: Masters of books



The weather gods looked favourably on the Whangamata Lions Book Stand and Sausage Sizzle at King's Birthday weekend.

The community spirit was very evident as the customers and hard working Lions discussed favourite authors, introduced new ones and made purchases. Sausages were definitely required to keep everyone's strength up!

The fiction books are always the go to for many but it was heartening to see so many youngsters browsing through the Kids section and fronting up with their \$1. A new generation of book

readers right there!

This time round, we also sold a lot of non fiction books. Its great to see people still enjoy the autobiographies, the true stories, cooking, nature, pictorial books and the like. In fact, in this digital age books are still primo!

On that note, our next book stand is planned for Saturday, 29 June - Matariki weekend, 9am to 2pm. Keep our eye out for our Lions flag and come and see us near the library. We look forward to seeing you there.

- Kath Thornton
whangamatal@lions.org.nz

WHANGAMATA TENDER



Main Street Commercial - TENDERS INVITED

Whangamata

Main street Whangamata commercial building, retail sector, built 1985. Current lease 5 years x 5 years x 5 years. Internal space 195 sqm more or less. Site 317 sqm, CT 34A/93. Zoned "town centre" 501a Port Rd, Whangamata. This property is to be sold by tender, tenders close **3pm, 3rd July 2024.**

For full details please email "the trustee" (see below) Full name and contact details required, a tender submission pack will be sent out to you by email. Inspections will be by prior arrangement only.

For Tender details on this unique investment opportunity, please enquire in writing to **thetrusteerft@gmail.com**
Phone 021 884 340



CARAVAN FOR SALE

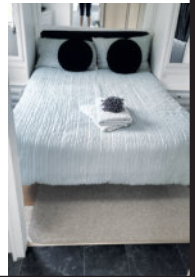
Jayco 28 Foot 2002 - VIEW LOCALLY



AFFORDABLE TINY HOME!

Totally renovated, new carpet, vinyls, repainted interior, shower, toilet, double bed, oven, microwave, it really is chic! All the extras!

Contact 021 0232 1661



CLASSIFIEDS

SITUATIONS VACANT

Great Work Opportunity

Join us to support and work alongside separately, 2 capable, independent great guys. It could be at their homes, at work, in recreation or town and around.

If you have a can-do attitude, can engage and relate well with others, this opportunity, part time or casual could suit you.

A full NZ driver's licence and your own vehicle is required.

Email queries or a letter and/or CV to gillatt@outlook.com

PUBLIC NOTICES



BA5 – Business After 5
Thursday 27 June 2024 - 5pm
The Craft Haus, 711 Port Road, Whangamatā



Angela Clark, our guest speaker, local resident and HR Specialist. Angela is People & Culture Manager at OceanaGold Waihi. Do you need some tips & tricks on recruitment, want to know the importance of employee benefits, then come and join us. Learn about our Professional Women's Networking Group. Member Minutes as usual, come and have your say on what's happening in your business.

HELP US TO HELP YOU. BECOME A MEMBER. www.whangamata.org.nz

PUBLIC NOTICES



Whangamata Harbour Care AGM

26 June at 11am
at the Whangamata Club

Following the AGM, there will be a short talk by local Errol Gilbert on the history and recent developments on the Tunaiti Islands.

WHANGAMATA CLUB (INC)

In terms of Rule 15. (1), Notice is hereby given that the Annual General Meeting of the Whangamata Club (Inc), will be held at the Clubrooms, 404 Port Road, Whangamata on Sunday 14th July 2024 at 10.00am.

AGENDA

- President's Welcome
- Minute Silence
- Apologies
- Minutes of the 2023 Annual Meeting
- President's Report
- Financial Report & Balance Sheet
- Treasures Report
- Presidents Honorarium
- Notices of Motion close 18 June 2024.
- Executive Remits
- Results of Election of Executive Committee
- Subscription Fee
- Appointment of Auditor for the 2024/2025 year
 - Nominee Michael Burt
- General Business
- Closure.

All Full Financial Members are welcome to attend. Please present your Membership Card for entry into the Meeting.
Ian McAuley, President

Whangamatā Tides 2024

JUNE 2024										
		☾ New Moon: 7 th					☀ Full Moon: 22 nd			
Date		High tide	Height (m)	High tide	Height (m)	Low tide	Height (m)	Low tide	Height (m)	Sun rise
		AM		PM		AM		PM		set
21	Fri	6:01	1.7	18:44	1.8	11:53	0.6	12:15	0.4	07:30
22	Sat	6:50	1.8	19:31	1.9	0:42	0.5	13:02	0.4	07:31
23	Sun	7:39	1.8	20:17	1.9	1:30	0.5	13:48	0.3	07:31
24	Mon	8:29	1.8	21:05	1.9	2:19	0.4	14:35	0.3	07:31
25	Tue	9:19	1.8	21:53	2.0	3:09	0.4	15:23	0.3	07:31
26	Wed	10:09	1.9	22:43	2.0	3:59	0.4	16:12	0.3	07:31
27	Thu	11:01	1.9	23:33	2.0	4:50	0.3	17:03	0.3	07:31
28	Fri	11:54	1.9		1.8	5:41	0.3	17:56	0.3	07:31
29	Sat	0:25	2.0	12:50	1.8	6:34	0.3	18:51	0.4	07:31
30	Sun	1:18	1.9	13:48	1.8	7:28	0.3	19:50	0.4	07:31

JULY 2024										
		☾ New Moon: 6 th					☀ Full Moon: 21 st			
Date		High tide	Height (m)	High tide	Height (m)	Low tide	Height (m)	Low tide	Height (m)	Sun rise
		AM		PM		AM		PM		set
1	Mon	2:13	1.9	14:48	1.8	8:24	0.3	20:49	0.4	07:31
2	Tue	3:08	1.9	15:49	1.8	9:21	0.3	21:50	0.5	07:31
3	Wed	4:05	1.9	16:48	1.9	10:19	0.3	22:50	0.5	07:31
4	Thu	5:02	1.8	17:45	1.9	11:15	0.3	23:48	0.5	07:31
5	Fri	5:59	1.8	18:38	1.9			12:09	0.3	07:31
6	Sat	6:53	1.8	19:29	1.9	0:43	0.4	13:01	0.3	07:31
7	Sun	7:45	1.8	20:17	1.9	1:35	0.4	13:49	0.3	07:30
8	Mon	8:33	1.8	21:02	1.9	2:24	0.4	14:35	0.3	07:30
9	Tue	9:19	1.8	21:45	1.9	3:11	0.4	15:19	0.4	07:30
10	Wed	10:03	1.7	22:27	1.8	3:56	0.4	16:02	0.4	07:30
11	Thu	10:46	1.7	23:08	1.8	4:38	0.5	16:44	0.5	07:29
12	Fri	11:29	1.7	23:49	1.8	5:20	0.5	17:26	0.5	07:29
13	Sat			12:13	1.7	6:01	0.5	18:10	0.6	07:29
14	Sun	0:31	1.7	12:59	1.6	6:44	0.5	18:56	0.6	07:28
15	Mon	1:14	1.7	13:49	1.6	7:28	0.5	19:46	0.6	07:28
16	Tue	2:00	1.7	14:41	1.6	8:16	0.5	20:38	0.6	07:27
17	Wed	2:49	1.7	15:36	1.6	9:06	0.5	21:32	0.6	07:27
18	Thu	3:40	1.7	16:30	1.7	9:58	0.5	22:27	0.6	07:26
19	Fri	4:34	1.7	17:23	1.7	10:51	0.5	23:21	0.6	07:26

Who said history is boring?

Continued by Whangamatā News

Did you sing this as a kid?

This old man he played one
He played nick nack on my drum
With a nick nack paddy whack
Give a dog a bone
This old man came rolling home

This old man he played two
He played nick nack on my shoe
With a nick nack paddy whack
Give a dog a bone
This old man came rolling home

This old man he played three
He played nick nack on my tree
With a nick nack paddy whack
Give a dog a bone
This old man came rolling home

This old man he played four
He played nick nack on my door
With a nick nack paddy whack
Give a dog a bone
This old man came rolling home
and on it went...

This rhyme is thought to relate to Irish beggars who arrived in England during the potato famine which lasted between 1845 to 1852 and resulted in one million



deaths.

Paddies, as they were known, would sell 'knick knacks' door to door, also playing a rhythm of 'nick nack' using spoons, in the hope of receiving some pennies.

According to the tale, they'd be given a whack and sent on their way, while their dog would be given a bone.

Only the BEST TRADIES will do! Use Locals... For Locals... Support Locals!

SMALL ENGINE REPAIRS

ANTS REPAIRS

Whangamata-based small engine repairs & maintenance

- Chainsaws • Lawnmowers
- Ride ons • Weedeaters

121 Sharyn Pl • 021 0244 2791
ants.repairs.nz@gmail.com

SCAFFOLDING

Apex Scaffolding is owner operated,
fully compliant and ready to provide
- for all your scaffolding needs



Stu Donald 021 493 008
apexscaffolding@xtra.co.nz
46 Enterprise Drive, Papamoa
0800 273 972 APEXSC
apexscaffolding.co.nz



LANDSCAPING



LANDSCAPING SUPPLIES:

Bark, mulch, compost and topsoil | Sand, lime chip, river stones and pebbles | Cement, builder's mix and a range of metals

Delivery service available

Whangamata Yard 2546 Waihi Whangamata Rd M. 027 261 1262
Waihi Beach Yard 691 Waihi Beach Rd P. 07 863 5340

LAND DEVELOPMENT



Subdivisions
Boundary Markings
Land Use Consents Topographical Surveys
Building Setout and Certifications

Contact us
0508 4 BIRCH
tairua@birch.nz
244 Main Road, Tairua
www.birch.nz



EARTHWORKS



- Bobcat & excavator
- Tight access work
- Site works
- Topsoiling
- Driveways
- Hole drilling
- Concrete prep
- Cartage

Shay 021 742 966 | www.blackhillearthworks.co.nz
info@blackhillearthworks.co.nz

PAINTER & DECORATOR

BOOF BOLAND
PAINTER & DECORATOR

M: 0274 367 254
E: jenboof@outlook.com

Master Painters New Zealand

IT SUPPORT

Boot it.

FIBRE INTERNET
now available to order from Boot I.T.

We are the Coromandel's only local Fibre Internet Provider, and the ONLY provider that offers 7 days per week support.

Call us on 0800 242 266 to find out more.

CONCRETE

BROWNMORE CONSTRUCTION
CONCRETE CONTRACTORS

Any Concrete Requirements: Slabs, driveways, patios, paths, etc
All types of concrete - colour - finish
Council Permits for Vehicle Crossings
Excavation to finished product • Saw cutting & drilling

We take pride in doing a quality job at a competitive rate

REX: 027 285 5489
P. 07 863 3364 • office@brownmoreconstruction.co.nz
www.brownmoreconstruction.co.nz

PAINTER & DECORATOR

Gavin Johnson
PAINTER & DECORATOR

Interior/Exterior Painting
Wallpapering
Cedar Cleaning and Restoration Service

0224 552 363
brushstrokeswhangamata@gmail.com

FENCING

RURAL FENCING • RESIDENTIAL FENCING
POST AND RAIL • RETAINING WALLS
POLE SHED BUILDINGS
ORCHARD BUILDS & MAINTENANCE

coastline FENCING LTD

BLAIN TEMPELMEYER 027 784 6538
coastlinefencing7@gmail.com

PAINTER

Coastline Property Painters

Protecting your investment ■ Interior ■ Exterior ■ Roofs ■ Updates & photos as your job progresses

Communication is everything

Call Richard Upton: 0274 884 881 / www.coastlinepropertypainters.com

FIREPLACES

Cosy Fires

www.cosyfires.co.nz

Your Whangamata-based gas & wood fire agents. Available for site visits from the Coromandel to B.O.P. to Hamilton.

Email sales@cosyfires.co.nz
or call Paul on 027 276 7076

OUTDOOR COVER

Covered.

- Louvres
- Privacy Panels
- Awnings
- Sails

LOUVRESYSTEMS

info@covered.co.nz 07 865 6207 or 027 497 1236
www.covered.co.nz 300 Casement Rd. Whangamata.

CURTAINS / BLINDS

Specialising in:

- Curtains
- Roman Blinds
- Cushions
- Duvet Covers
- Roller Blinds
- Shutters

croft design

306 CASEMENT ROAD, WHANGAMATA
M. 0274 481 957 | E. beth@croftdesign.co.nz

Use Only the Best Services in our Community!

Use Locals... For Locals... Support Locals!

CURTAINS / BLINDS

Curtains and Blinds and More
Whangamatā

LOCALLY OWNED AND OPERATED

- Curtains
- Venetian Blinds
- Roller Blinds
- Romans Blinds
- Shutters
- Honeycomb Blinds

100% Mobile Service
We come to you, Free Measure and Quote

Call Louize or Gavin
on 027 4777 916
or email info@curtainsandblinds.co.nz

FRAMING

FRAMES NZ

- Picture framing
- Framed mirrors
- Art installation
- Pick up & delivery

Ade Cunningham
M. 0274 929 695 or P. 07 575 9149
info@framesnz.co.nz • www.framesnz.co.nz
118 Brook Pl, Whangamata

PAINTER

Gerards Painting Services

Small jobs are my specialty!

PHONE:
021 108 5996



ELECTRICIAN

GREG HENSTOCK ELECTRICIAN LTD

Registered Electrician
One Man Band

WHANGAMATA
0272 580 366



BUILDING & LANDSCAPING

HBL HANSEN BUILDERZ
BUILDING & LANDSCAPING

COMMITTED TO EXCELLENCE
Contact us to discuss your project & a free estimate today



ADRIAN 0274 263 895 | hansen.builderz@gmail.com | HBLHomesnz
Residential | Commercial | Alterations | Additions

ARCHITECTURAL BUILDERS

HOME & Lifestyle

- Architectural Builders
- Interior & Colour Design Services
- Project Management

For trusted expertise with your building project
Katrina Jackson 027 273 0685 | Leigh Goodman 027 4475 423
info@homeandlifestyle.co.nz

LOCKSMITH

Homesafe Locksmiths & Services

ONE key to fit ALL doors!
FREE advice on your lock requirements

Ian McAuley (Macca) Owner/Operator
• 126A Tamaki Rd, Whangamata
• P 021 719 495 or 07 865 7092 • E imacca2003@yahoo.co.nz



BUILDING WASHING

HOUSE WASHING

Exterior house or commercial building wash, roof wash, fences, driveway, patios – soft-wash for best moss and lichen clean and treatment, exterior window cleaning, or general water blasting, 100m of hose so access is no problem

Prompt local service with 20 years' experience

Ph 0800 747 787 email atlasgroup@xtra.co.nz
or dial **Andy direct on 027 313 4386**

CLEANING

jae

we'll take care of it

- Carpet Cleaning
- Pest Control
- Flood & Fire Restoration
- Stain Removal
- Upholstery Cleaning

07 863 8358 or 0800 225 552
whangamata@jae.co.nz

50 YEARS



AUTOMOTIVE & BOATS

JCD CUSTOMS & MARINE

BOAT TRAILERS, CARS, CLASSIC & HOT RODS

ONLY **Repsco** STOCKIST IN TOWN!
ONLY **HONDA** AGENT IN TOWN!

Aickin Road, Whangamata (next to Bunnings)
P. 865 9073 | E. office@jcdcustoms.co.nz
Mon-Fri from 8am



TRAVEL BROKER

Kay Gregan
TAANZ BONDED Travel Broker & CLIA Accredited Cruise Specialist

THE TRAVEL BROKERS
a member of helloworld TRAVEL LIMITED

AWARD-WINNING TAANZ BONDED TRAVEL BROKER
Travel Broker & CLIA Accredited Cruise Specialist
Whangamata 07 865 9568 | M: 027 337 6222
Kay.Gregan@thetravelbrokers.co.nz
thetravelbrokers.co.nz/kaygregan



BUILDER

Keith the Builder LBP

Need something done?
For maintenance, decking, fencing, repairs, interior work and all enquiries

PHONE FOR FREE QUOTE
Keith phone 0272 262 039



ELECTRICAL

Electrical Laser
"Totally Dependable"

AVAILABLE 24/7

Residential | Commercial | Heat Pumps
Fire Systems

P. 865 9309 | whangamata@laserelectrical.co.nz
NEW LOCATION: 100 Lindsay Road



KITCHEN

WHANGAMATA WOODWORKS

Specialists in design, manufacture & installation of kitchens, wardrobes & custom cabinetry

108 Lindsay Rd, Whangamata P. 865 7947 whangamatawoodworks.com

MASTERCRAFT KITCHENS



KITCHENS

McBeth Rd Orchard Joinery
Affordable joinery

Kitchens new or upgraded
Laundries & bathrooms
Wardrobes & storage units
Free estimates

Tony & Nicky Ball - 027 229 2255
Whangamata

Only the BEST TRADIES will do!

Use Locals... For Locals... Support Locals!

BUTCHER

MEAT AT THE BEACH

Winter Warmers!

Goat, Casserole & stewing steaks, Oxtails,
Bacon bones, Swiss rolls and so much more!
get our Whanga Streaky Bacon & Ham on the Bone today!

601 PORT ROAD, WHANGAMATA P. 07 865 7241
MON-FRI 8.30AM-5PM • SAT 8.30AM-3PM

BUILDER

MJC BUILDERS

Building with pride

- FENCING
- DECKS
- PERGOLAS
- ROOFING
- ALTERATIONS
- BUILDING REPAIRS
- CONCRETE DRIVEWAYS
- FULL LANDSCAPING



MIKE CUNNINGHAM M. 021 0677 555
E. mjc.builder.whangamata@gmail.com

TREE SPECIALIST



Nicholson
Tree Services

QUALIFIED ARBORIST

30 years experience in all aspects of tree work

- Pruning
- Felling
- Storm damage
- Hedge trimming
- Confined space dismantling
- Debris chipped
- Free quotes and more

Professional and reliable service – fully insured

Phone Greg Nicholson on 07 865 6769 or 021 133 0937
email: nicholsontreeservices@hotmail.com

PODIATRY

Pedicare Services

Professional Foot Care

Alison Walkington
Registered Nurse

Home visits by
appointment



Mobile 027 663 2320 or
email alison.c.walkington@gmail.com

ARTWORK

PET PORTRAITS & ANIMAL ART

by Donna

- animalartbydonna
- animalartbydonna
- 027 455 0608
- donnaredbeach@msn.com



PHOTOGRAPHY

Pete Stretch PHOTOGRAPHY



027-458-1179 peterstretchphotography@gmail.com

ELECTRICIAN

PITCHER ELECTRICAL



YOUR TRUSTED
MASTER ELECTRICIAN
working in Whangamata,
Opoutere, Onemana and
Whiritoa

RESIDENTIAL AND
COMMERCIAL SERVICES

TONY PITCHER 0274 589 573

POOL & SPA SERVICES

Pool Queen LTD

MOBILE POOL & SPA CLEANING SERVICES

Sharleena Tucker ~ poolqueen@outlook.co.nz

027 316 3384
Coromandel Peninsula

WINDOW CLEANING



Your
ecofriendly
window
cleaning
service.

Mike Horton
info@purenclean.co.nz

M 021 501 324
www.purenclean.co.nz

HEAT PUMPS

Reef REFRIGERATION & AIR CONDITIONING LTD

We Sell and Service all Major Brands

Your heat pump specialist
On site marine & commercial refrigeration

Call today for a hassle-free quote

027 933 8599

www.reefrefrigeration.co.nz

ROOFING



RIKKI ROOFING
we aim for the roof shout

Rikki Daysh, Owner/Operator
022 408 8424
rikkisroofing@gmail.com

- Residential re roofs & new roofs
- Spouting
- Cladding
- Maintenance & re screws

PLUMBER

Russell CHOAT GAS & Plumbing

Whangamata

FOR ALL YOUR GAS-FITTING, PLUMBING,
DRAINAGE & ROOFING REQUIREMENTS

Registered craftsman & member
of Master Plumbers

M. 0274 714 869 E. office@choatsplumbing.co.nz

ELECTRICIAN / DOG GROOMER



Rusty Sparks

EVERYTHING
ELECTRICAL

Residential, Commercial,
Data, Alarms

@ 021 800 017

admin@rustysparks.nz



PIMPER
PUPS
GROOM
ROOM

@ 021 850 017
WHANGAMATA

ARBORIST & FIREWOOD

SHORT BACK 'N' SIDES LTD

Arboricultural Contractors

TREE PROBLEMS?

Dismantle, pruning, removal, stump
grinding. BIG or SMALL – we do them ALL!

0274 390 367

www.shortbacknsides.co.nz

FIREWOOD

Available all year round. Smoking chunks or dust, kindling,
bagged wood. Delivery available or pick up on Fridays from
15 Dean Cres, Waihi. Gold Card discounts. Also 100s of native
and exotic milled slab timber, garden mulch, smoking wood.

0274 390 367 or our firewood hotline 022 043 1862



Use Only the Best Services in our Community!

Use Locals... For Locals... Support Locals!

WINDSCREEN REPAIRS

MONDAYS:
RSA Carpark
Whangamata

TUESDAYS:
Fresh Choice
Carpark
Waihi

secureglass | windscreen repairs

André Gillbanks
Phone 021 617 664

Chip Repairs
Windscreen Replacements
Insurance Claims Arranged



BUILDER

SKF

RESIDENTIAL SERVICES

Qualified Builder / LBP

07 865 6555 skfrs@xtra.co.nz

BINS

Skip Bins, Wheelie Bins, Front Load Bins

Contact us today!

We can help!

smart environmental

0800 4 MY BIN - www.smartbins.co.nz

Proudly 100% Kiwi owned

BOARDING KENNEL / CATTERY

SPOT X

Quality care and facilities in a rural setting

Office hours: 9am-12 noon and 3-5pm daily
INSPECTION WELCOME
Ph 07 865 8242 or 027 624 3890

Annette Gillatt
4km south of Whangamata on the main road

BOARDING KENNELS AND CATTERY



REFRIGERATION & AIR CON

TIDELINE REFRIGERATION
WHANGAMATA

- * HEAT PUMPS
- * REFRIGERATION
- * AIR CONDITIONING
- * VENTILATION

SERVICING IN THE COROMANDEL AREA
0272121994 - 0277251820
TIDELINEREFRIGERATION@GMAIL.COM
WWW.TIDELINEREFRIGERATION.COM

ARBORIST

TREE TOPS ARBORIST

- Professional experienced and insured arborist
- All tree work including removal / pruning
- Hedge trimming and property maintenance
- Quality firewood and smoker wood

Heath van Leeuwen 0210 838 9922
email Heathsvan@gmail.com

TREE SPECIALIST

TREECARE WHANGAMATA LTD

- Tree felling & pruning
- Hedge trimming
- Stump grinding
- Fully insured
- Qualified arborist

Contact Ben 021 827 355
treecarewhangamata@gmail.com



LAWYERS

USSHER LAWYERS

- SINCE 2007 -

We can help with all of your general legal needs

- Conveyancing if you are buying or selling property
- Sale and purchase of business assets • Commercial leasing
- Relationship property • Trusts • Wills • Enduring powers of attorney

www.ussherlawyers.co.nz | Phone 07 865 8824
We've moved - now at 123 Lindsay Rd, Whangamata

WARDROBES

WD WARDROBES DIRECT

Steve Parkinson
Central, East & South
021 0733 100
steve.parkinson@xtra.co.nz

ALSO SERVICING WHANGAMATA
www.wardrobesdirect.co.nz

Showroom
Unit 2,
63 Morrin Rd
St John's
Auckland

LAUNDRY

WHANGA LAUNDROMAT

"The only locally owned & operated laundromat in town!"

OPEN 24 HOURS - 7 DAYS A WEEK
CASEMENT RD, WHANGAMATA (OPPOSITE WAITOMO FUEL)



SCAFFOLDING

WHANGAMATA SCAFFOLDING

- Mobile scaffolding
- Roof edge protection
- Construction scaffold

Servicing Whangamata and surrounding areas

Please ring 022 076 0160 or
email whangamatascaffolding@gmail.com
102 Lindsay Road, Whangamata Est 2014

TYRE & BATTERY SERVICES

WHANGAMATA TYRE & BATTERY

KUMHO TYRES

Car tyres / Wheel alignment
4WD tyres / Tyre repair
Wheel balance
Small implement tyres
Batteries - car & marine

Phone Simon 865 7698

CHALLENGE | Cnr Port & Ocean Rd, Whangamata
www.challenge.net.nz



WINDOW & DOOR SERVICES

WHANGAMATA WINDOW & DOOR SERVICES

Bryce Hall
M. 027 282 2057
Ph. 865 9714

Reglaze // Repairs // Maintenance
Retro Fit Double Glaze

whangamatawindowdoorservices@xtra.co.nz

HOME SERVICES

YourLocal
NZ's Trusted Home Services

Avi@yourlocal.nz • www.yourlocal.nz • 022 534 5478

We specialise in

- Exterior house wash, windows, driveways, patios, decks, fences & roofs • Commercial, residential, rural, new builds & painters prep • Pests treatment (fumigation)
- Rodents & wasps • Chimney sweeping • Roof treatments

BUSINESS FRANCHISE FOR SALE

We cover Coromandel, Thames, Waihi, Waihi Beach, Whitianga, Whangamata



CLOTHING

YUKEYS

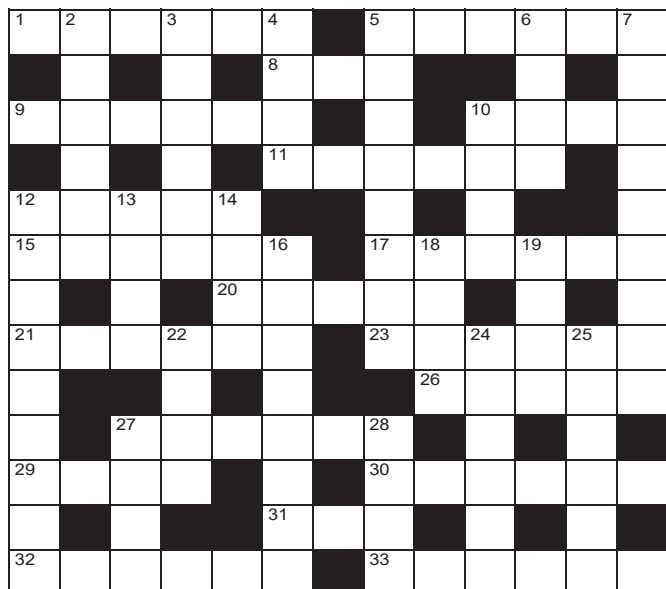
3620

Clothing Alterations and Repairs

LADIES • MEN • CHILDRENSWEAR

Open Tuesday to Friday 8.30am to 1.30pm
Saturday 9am to 12pm
105 Aickin Road (just off Port Road)
Whangamata
M. 021 0289 3968

QUICK CROSSWORD



Across

1. Legal (6)
5. Mass migration (6)
8. Donkey (3)
9. Carve in relief (6)
10. Therefore (Latin) (4)
11. Position (6)
12. Circle (5)
15. Sailor (3,3)
17. Lacking principles (6)
20. Temperamental (5)
21. Dog disease (6)
23. Moral principles (6)
26. Serf or slave (5)
27. Renovate (6)
29. Wading bird (4)
30. Beginning (6)
31. Flightless bird (3)
32. This one or that (6)
33. Repeat aloud (6)

Down

2. Look up to (6)
3. Ruddy (6)
4. Girl (4)
5. Adventure (8)
6. Dreadful (4)
7. Final selection of candidates (9)
10. Repeat (4)
12. Exclude (9)
13. Dig (4)
14. Weighty book (4)
16. Fine and filmy (8)
18. Fable (4)
19. Train track (4)
22. Mid month (4)
24. Very busy (6)
25. Secret (6)
27. Split (4)
28. Decant (4)

SOLUTIONS

CRYPTIC

Across: 1. A box of birds, 7. Battlefield, 9. Too, 10. Variances, 12. Clip-on, 13. Adonis, 15. Swans-down, 16. Ask, 18. Intuitively, 20. Winning post, 21. Authortarian, 2. Oblivious, 3. Oxford, 4. Bee, 5. Reducing agent, 6. Abet, 8. Casts, 11. Andantino, 12. Costs, 14. Coping, 17. Keys, 19. Tui.

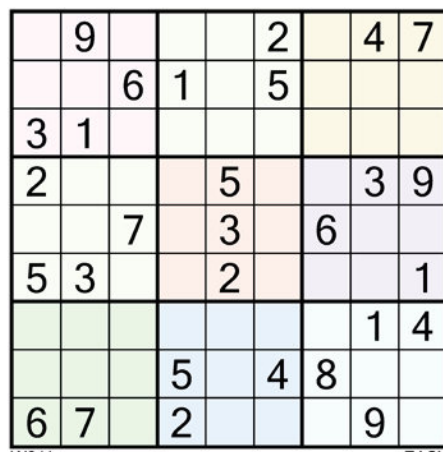
Down: 1. Without thinking I lent Tui & Ivy stupidly (11), 2. Choclates for the end of the race? (7,4), 3. Ethics, 26. Helot, 27. Revamp, 29. Ibis, 30. Outset, 31. Etnu, 32. Either, 33. Recte.

DECODER

Across: 1. Writer, anti IRA maybe, has belief in obedience (13), 2. Made Lou VII sob as he has no idea (9), 3. It's a boat in which you will get the blues! (6), 4. First and foremost a busy energetic entomological entity (3), 5. A Jenny Craig rep in the chemistry lab? (8,5), 6. Help commit a gambling crime? (4), 8. Plaster models of the performers (5), 11. Ann, Ian & Tod are fairly slow musically (9), 12. The prices of lettuce on a back street (5), 14. Managing with the saw (6), 17. Scales found in Florida (4), 19. An NZ bird in 18 (3).

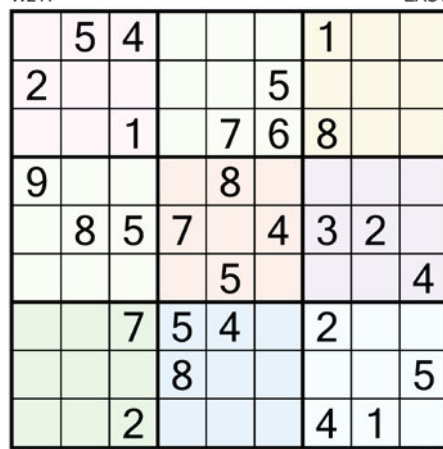
SUDOKU

Fill the grid so every row, column and 3x3 box contains the numbers 1-9



W211

EASY



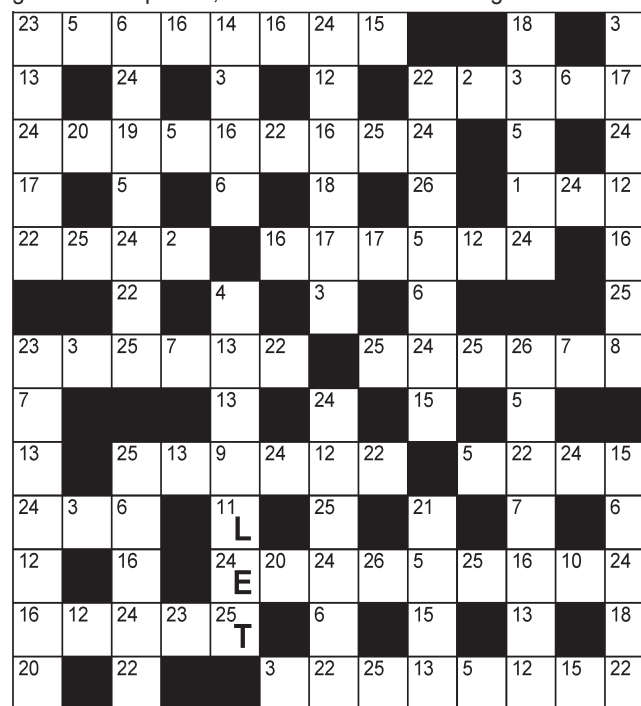
W212

HARDER

All puzzles © The Puzzle Company

DECODER

Each number below represents a different letter. Find the correct letter for each number by working out the word from the letters given. To keep track, cross the letters off on the grid below.



A	B	C	D	E	F	G	H	I	J	K	L	M	N	O	P	Q	R	S	T	U	V	W	X	Y	Z
1	2	3	4	5	6	7	8	9	10	11	12	13													
											L														
14	15	16	17	18	19	20	21	22	23	24	25	26													
											E	T													

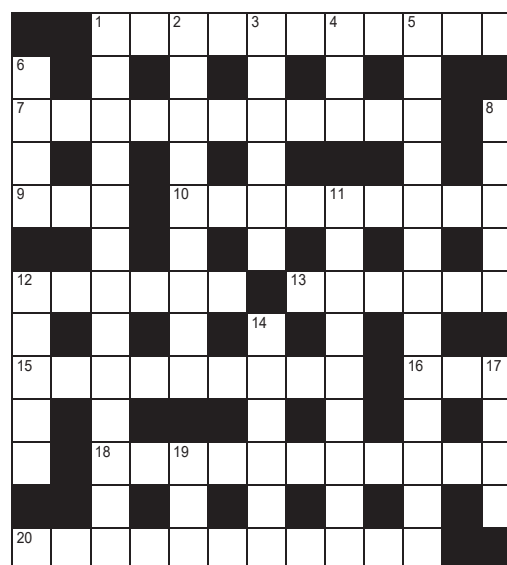
CRYPTIC CROSSWORD

Across

1. As cheerful as Oxford bibs maybe (1,3,2,5)
7. Befitted all for the war zone (11)
9. ... no help for pothole also (3)
10. Eva Cairns corrected discrepancies (9)
12. Stick with pegs as hair-dressers do (4-2)
13. A principal is quite handsome (6)
15. Dawn snows can be quite soft (9)
16. Question for the too-hard basket (3)
18. Without thinking I lent Tui & Ivy stupidly (11)
20. Choclates for the end of the race? (7,4)

Down

1. Writer, anti IRA maybe, has belief in obedience (13)
2. Made Lou VII sob as he has no idea (9)
3. It's a boat in which you will get the blues! (6)
4. First and foremost a busy energetic entomological entity (3)
5. A Jenny Craig rep in the chemistry lab? (8,5)
6. Help commit a gambling crime? (4)
8. Plaster models of the performers (5)
11. Ann, Ian & Tod are fairly slow musically (9)
12. The prices of lettuce on a back street (5)
14. Managing with the saw (6)
17. Scales found in Florida (4)
19. An NZ bird in 18 (3)



17. Scales found in Florida (4)
19. An NZ bird in 18 (3)



TUNE INTO 95.1 FM

