

Whangamatā & Waihi NEWS

ISSUE 158 – 23 JANUARY, 2026

FREE
COPY

PLEASE
TAKE ONE!

Long weekends – the bee's knees!

Photo by Mark James



Forest classroom growing P4



Sandy Cheeks P5



Tamahau shines with Star P14



FOLLOW US

BY LOCALS, FOR LOCALS, ABOUT LOCALS.

WE WELCOME YOUR CONTRIBUTIONS!

Email WhangamataNews@gmail.com • Facebook [@whanganews](https://www.facebook.com/whanganews)

Taken home by bach owners and visitors to everywhere

SEE ALL OUR EDITIONS LIVE AT
WWW.WHANGAMATANNEWS.NZ

EDITORIAL & MEDIA SALES:
JENNIE BLACK – 021 0232 1661

INDEPENDENTLY OWNED

DELIVERED TO WAIHI BEACH, WAIHI, WHIRITOA, WHANGAMATĀ, ONEMANA, HIKUAI, PAUANUI & TAIRUA

Little Blue advice

You might have noticed an increase in kororā/little blue penguin sightings around the Coromandel - and we're getting lots of calls about them.

Here's what's happening:

Sea temperatures are unusually warm for this time of year. Penguins are having to swim further and dive deeper to find food, leaving them exhausted and sometimes starving.

We're starting to see newly fledged juveniles. These young birds are inexperienced hunters and can struggle even more under current conditions.

Increased boating activity means a higher risk of boat strikes for penguins and other seabirds.

With more visitors on beaches, encounters with sick or injured birds are more likely.

What should you do if you find a

penguin?

Penguins are not a response species. If you find one, please leave it in a cool, quiet spot on the beach or in the dunes, away from people and dogs.

Dogs on beaches during prohibited times should be reported to Thames-Coromandel District Council (07 868 0200).

If a bird is clearly injured, you can take it to a local vet clinic - but please note that euthanasia is often the likely outcome.

Dead birds can be buried above the high tide mark.

We know this advice can be hard to hear, but it reflects the reality of our changing climate. The best thing we can do is let nature take its course.

Thank you for helping us care for our wildlife.

- Anita Pearson, DOC



Will you help?



Will is still a front line Police Officer and Sergeant in Charge right here in Whangamatā. Will and his fiancé live in our beautiful little town and have two sons under five.

Fundraising efforts have been long and protracted due to the state of play with Pharmac and no further available funded treatments for Will. That means he must pay from his own pocket to access treatment. Treatment that is available here in New Zealand, but that for the last 8 years, Pharmac has declined to fund.

give a little
POWERED BY perpetual guardian

As a small insight, per week here in New Zealand it is \$10,000 for one 15ml injection under the skin, taking approximately 3-5 minutes.

Currently Will is traveling and funding, on a weekly basis to access cancer treatments abroad. Not a cheap exercise!

Scan the QR code to head to the Give a Little website to make a donation. For direct donations, there is a dedicated fundraising bank account. Be sure to leave your name and a message as reference please!

WILLIAM HAMILTON
06-0457-0769055-51



RepcO

BEACH HOP

CELEBRATING 100 YEARS OF ROUTE 66 2026

BEACH HOP OR BUST!

Rock 'n' Roll Festival

WHANGAMATA NEW ZEALAND

BOOK SPACE NOW!

REPCO BEACH HOP MAGAZINE 2026 IS UNDERWAY!

DEADLINES	
Booking Deadline	Friday, 30 Jan 2026
Setting Deadline	Wednesday, 4 Feb 2026
Camera Ready Deadline	Monday, 9 Feb 2026

Jennie 021 0232 1661 or whangamataneews@gmail.com

DON'T MISS OUT! SECURE YOUR SPACE IN 12,000 MAGAZINES

Scott Simpson

MP for Coromandel

Contact me anytime
0800 550 330 • scottsimpson.co.nz
mpcoromandel@parliament.govt.nz
scottsimpsonmp

National
Authorised by Scott Simpson, Parliament Buildings, Wellington.

Baker Joinery Ltd

"Craftsmanship with care"

- Kitchens
- Joinery
- Wardrobe Solutions

- Laundry
- Bathrooms
- Pre-Hung Doors

For top-notch craftsmanship & expertise in joinery & cabinetry
contact 07 863 8962 | info@bakerjoinery.co.nz
Or pop into our Show Room 46 Johnston Street, Waihi

SHOW ROOM OPEN SATURDAYS

Waihi Police Report

As we step into the new year, Waihi Police want to share what's been happening locally – and how your efforts are helping keep our community safe.

We've seen an increase in burglaries, but thanks to your calls about suspicious behaviour, many crimes have been stopped before they started. Your vigilance matters – keep it up!

Shoplifting has spiked too. If you're struggling, please don't risk a criminal record for groceries. Come see us – we can help connect you with a food parcel or the Salvation Army. It's a far better option than a court date!

Christmas and New Year kept us busy, and now with summer in full swing, we remind everyone about water safety, responsible drinking, and safe driving. If you've had a few, wait a decent period before driving the next day – sleeping it off doesn't guarantee you're sober.

Sadly, we've caught far too many drink drivers lately. This isn't the kind of record-breaking we want. Plan ahead, use a sober driver, or call a cab. Let's keep everyone safe.

We've also noticed an increase in drug activity around town. Please stay vigilant – if you see something that doesn't look right, let us know. You can report anonymously through Crime Stoppers on 0800 555 111. Your information helps us tackle this issue and keep Waihi safe.

Thank you for your support – together, we can keep our community thriving.

Stay safe, stay smart – and let's keep the drama on Netflix, not in Waihi!

– Rachel Gillingham, A/Sergeant,
OC Station, Paeroa

Whangamata Police Report



Happy New Year from the team here at the station. We are well and truly into the summer policing period now and there appears to be no shortage of work. While over the new year period it was much the same, there still appears to be an overwhelming and somewhat noticeable increase in young persons being supplied alcohol and sent on their merry way. I think it can be done better and safer. This goes not only for the summer period, but year round wherever you may be.

Boats on the road are not a safe place for passengers to sit while driving to and from the boat ramp. Last week, a ute towing a boat was stopped with three children under five and one adult in the boat. This could end up an absolute tragedy. Accidents happen, that is a given and we do everything to prevent those. If one of those boats with passengers was T-Boned at an intersection you can only imagine the situation that would be faced. This goes for Jet Skis also. Please please don't do it. Think ahead of the risks.

In the first week of January it was more than likely noticed that a motorbike was avoiding Police. That motorbike was stolen from the Netherton area and ended up in our area. The offender who was known to Police was also breaching his bail conditions also. Just north of Whangamatā the offender committed a burglary, taking a fuel container from a boat, most likely to broaden his escape. The bike was shadowed and ran out of fuel at the base of Ramarama hill (Whangamatā side) where the offender went bush for a number of hours. A police dog came along and began tracking the male for a considerable period of time

also. An eagle eyed resident in the area noticed a person that looked out of place around their house and called 111. This gave us an updated start point for the Police Dog. Staff went deep into farm land where they located and arrested the offender. The offender, a 28 year old male is now remanded in custody for a future court date with a few extra charges to answer. We thank the farmers and residents in the area for their patience and cooperation. Certainly made finding this person a lot easier.

Recently we had a few dishonesty incidents involving the same person, one being a petrol drive off and the other being shoplifting. It was discovered that the person had left town but we were quickly notified by the community when the person returned to town where he was arrested at the address he was staying at. It was discovered that there were other incidents around the north island where he was the identified offender also. He was charged for these incidents and bailed to appear in the Waihi District Court at a later date.

Just a reminder of the phone numbers to call when you need Police. If it is happening now and urgent call 111. If there is no urgency and can wait a little while, for example a stolen bike and you don't know when it happened, call 105. You can also report non urgent matters online to 105 at www.police.govt.nz/use-105, even a non-injury fender bender.

Keep safe, drive sober and have a great end of summer break.

– Sergeant Will Hamilton,
Officer in Charge, Whangamata Police

Kids' Kite Day Whangamata



Saturday 24 January, 10am - 2pm
on the beach by the
WHANGAMATA SURF CLUB



Come fly your kite or available on the day for \$10 & support our Whangamata RSA



HELLO WHANGAMATA & WAIHI BEACH

VISIT HELLOWORLD TRAVEL - YOUR LOCAL TRAVEL PROFESSIONALS WITH AGENTS NOW AVAILABLE IN WHANGAMATA & WAIHI BEACH

Helloworld Travel Thames -
Waihi Beach Village and Town Centre Whangamata
☎ 07 868 9260 @ thames@travel.helloworld.co.nz

helloworld TRAVEL
THE TRAVEL PROFESSIONALS

Victoria's Closet

Quality labelled pre-loved, new & near-new clothing, shoes & handbags

AFFORDABLE PRICES

\$20 OFF all clothing \$35 and over!

Open daily from 10.00am until 3.00pm
Ph 0274 989 360 • Port Rd, next to Whangamata Pharmacy

Roots of a forest classroom

A new early childhood initiative inspired by the Reggio Emilia philosophy begins in Opoutere this term, with plans to offer young tamariki/children a forest-based learning experience grounded in curiosity, emotional security and nature connection.

The approach traces back to northern Italy shortly after the Second World War, when a group of women in the town Reggio Emilia sought a more humane and hopeful future for their children. Their vision viewed young learners as capable citizens with ideas, voices, and a deep connection to community and environment.

"Reggio sees learning as something that unfolds through relationship with people, with place and with the natural world," says educator and programme founder Laura van Leeuwen of Whangamatā. "The environment isn't just a backdrop. It becomes a teacher in its own right."

Rather than rushing children through outcomes, Reggio philosophy emphasises exploration, wonder and co-constructed meaning, with experiences revisited over time. "It's a bit like waiata," van Leeuwen says. "When you return to them, new layers of understanding emerge."

That philosophy underpins Wonder Woods, a forest playgroup van Leeuwen plans to establish locally from Term 1, 2026.

Van Leeuwen brings more than a decade of experience to the project, having taught at Tairua School and Hikuai School, worked as a Resource Teacher: Learning and Behaviour across the Hauraki region, and later as a Learning Support Coordinator within the Coromandel Kāhui Ako, supporting schools and ECE services in Opoutere, Hikuai, Tairua, Whenuakite and Coroglen. She has also completed postgraduate study in specialist teaching and a Diploma in Positive Psychology and Wellbeing.

"Across all of those roles, my focus has always been on children's emotional security, curiosity and sense of belonging," she says.

Wonder Woods is being developed in partnership with Matariki Forests, with permission and safety planning



underway, and in conversation with kaumātua to honour the learning held within the land. The programme plans to tread lightly, nurturing tikanga of the environment — including simple practices such as not taking kai into the forest — with sessions based between the forest and the newly refurbished Opoutere Hall.

Motherhood has given the work added weight. "As my son moves through his first thousand days, I'm constantly reminded how foundational those early years are for emotional safety, trust and secure attachment," van Leeuwen says. "Wonder Woods has grown from that place — a gentle, rhythm-based programme where toddlers and preschoolers can learn with nature, in relationship, and at their own pace."


Expressions of interest are now open for families, with the Term 1 programme proposed to begin in Week 2, dependent on local uptake.

"My hope," she says, "is that Wonder Woods will create a calm, connected forest space for our youngest tamariki — and that we can build it together as a community."

Wonder Woods starts Wednesday 11 February. Enrolments close: Friday 6 February. To register interest or learn more, email: thecuriositycircuit@gmail.com

— Jennie Black





Whangamata Lions

Monster BOOK SALE

Anniversary Weekend

Saturday 24th January
9am – 2pm

at the Fire Station

Live Draw Sat 24 Jan at 6pm
at the Whangamata Surf Club



WIN THESE!
4 Wall Sculptures by Clint C

Sponsored by
Clint C and
The Little Gallery
TAIRUA & WHANGAMATA





WHANGAMATA SLSC
37°20'24"S 175°87'88"E

'Life Saver' Raffle

All proceeds to WSLSC

\$20 ticket, 300 tickets
Purchase at WSLSC or The Little Gallery
Live Draw Sat 24th January 2026
Results published in Whangamata & Waihi News

Sandy Cheeks: Strength forged on the national stage

One of our J16 Girls Waka Ama teams, proudly known as Sandy Cheeks, recently took on the challenge of the 2026 Waka Ama Sprint Nationals, competing in both the 500m straight and the demanding 1000m three-turn events. For these rangatahi, earning their place on the national stage was the result of months of hard training, discipline, and commitment to both their waka and each other.

This year's Nationals delivered an elite calibre of racing, with many crews competing with clear Worlds' Intent. The intensity across all divisions reflected that ambition, and Sandy Cheeks found themselves racing among crews with depth of experience and refined race craft.. While the results did not see them place, the performances themselves revealed meaningful progress and genuine potential.

One of the standout strengths of Sandy Cheeks was their starts. Explosive, powerful, and well-timed, the girls consistently launched off the line with confidence, positioning themselves up with the fleet early. In races where momentum is critical, their ability to generate speed from the outset demonstrated the quality of their preparation and belief in one another.

In the 1000m three-turn event,



stamina remains an area for continued development as the sustained pace of elite crews began to tell. However, their turns were a clear highlight. Entering and exiting with control, accuracy, and technical skill, the girls matched elite crews

at each turn, often stealing placings through clean execution and sharp communication. These moments provided a powerful morale boost and reinforced their growing race intelligence.

Across both events, Sandy Cheeks

also achieved a significant milestone by beating their regional qualifying times. This measurable improvement at the highest level confirms that progress is not only visible, but imminent.

While Nationals 2026 may not have delivered podium finishes, it delivered confidence, clarity, and momentum. Sandy Cheeks leave knowing their strengths, committed to their growth, and with their best racing still to come — as they set their sights on Secondary Schools Sprint Nationals 2026 in March. Look out for our fleet of paddlers.

“As both a parent and team manager, I could not be more proud of these girls. Listening to them strategise the night before racing — openly communicating, planning how to build momentum, and executing their turns — was genuinely inspiring. Each girl brings a unique strength, and the way they listen, respect different ideas, and support one another are life skills that extend far beyond waka ama. Through Simone's guidance, the girls have learned to truly look out for each other, racing as a connected collective. Waka ama is more than competition; it is connection — to each other, to whānau, and to the water.” Leonie Sudmersen, Team Manager / Bayleys Club Sponsor Rep

Join Us AT THE WHANGAMATA CLUB

LONG WEEKEND ENTERTAINMENT

AUCKLAND ANNIVERSARY

Toucan – Saturday 24th January
Mark Huckstep – Sunday 25th January

WAITANGI WEEKEND

Gerry Lee – Friday 6th February
Jesse Wilde – Saturday 7th February

404 PORT ROAD
FACEBOOK.COM/THEWHANGACLUB
WWW.WHANGAMATACLUB.CO.NZ
P. 07 865 8705

PAUANUI

Magic for a day

What a magic afternoon for the Pauanui Long en Blanc Lunch. Weather played the part after a few days of rain. The guests arrived with chilly bins, fishing box chillies, candelabras, all the trimming to decorate their tables, the Moët was flowing and the crayfish arrived. What else could you ask for. The band where playing and the venue was something else. The stunning Duck Point with it's magnificent views and grounds. Surplus funds from today will go to buy special traps for the Pauanui trail and Predator Free Pauanui. Thank you for the great support for today and the great vibes for a great fun event in beautiful Pauanui.

- Pat Courtney



Summer Sale. On now!

55% off Swisstek Beds and Mattresses!

Keep cool with temperature regulating KülKöte.

NOW \$3,509 55% off. Swisstek Select Queen Bed

ONLY \$449 Elements Wave 3 'Grab & Go' Queen Mattress

Available rolled in a bag for easy transport. Grab one in-store.

Everyday Low Price. ONLY \$1,199 Wonderest Sleep Easy 3 Queen Bed

A durable bed with the comfort of pocket spring technology.

NOW FROM \$2,699 50% off. Serenity Eden Queen Bed

Featuring temperature control for a premium sleep experience.

NOW \$4,499 55% off. Swisstek Elite Queen Bed

Experience the Swiss-inspired quality of a market-leading spring system.

bedsrus.co.nz

94 Seddon St, Waihi • 07 863 8787
419 Port Rd, Whangamata • 07 865 9027
bedsrus.co.nz

30 Day comfort guarantee.

Locally owned & operated.

Sleepyhead 90 YEARS

BedsRus
Where dreams begin.

Summer Sale ends 10.02.26. Discount offers apply to selected beds and bedding only, prices as marked. Offers exclude Everyday Dream prices, run outs, clearance stock (unless otherwise stated) and not to be used in conjunction with any other offer. See in-store for details. 30-Day Comfort Guarantee available for in-store purchases only. We reserve the right to correct errors and misprints and to change product specifications. All products are advertised in good faith and will be available, except in circumstances beyond our control. Product ranges vary between stores and some products are available in selected stores only.

PAUANUI

Pimp the carts & bikes



A fun event to decorate your carts and bikes as part of the Pauanui Summer Series events. Not many entries but the enthusiasm was there for the ones that entered.

Thank you to Coromandel Ocean Adventures and Pauanui Information Centre. One lucky winner will be having a magic trip for the family to Alderman's.

- Pat Courtney



Reel in the Big One!



KILWELL Classic

4th - 7th February 2026

- ✓ Briefing 4th at 7.30pm
- ✓ Prize giving each night at 7.30pm
- ✓ Entry online
- ✓ Early Bird Prize \$5k
- ✓ Entry \$175
- ✓ Prize Pool \$70k

Last Man Standing Cash Prize \$10k

@The War Memorial Hall

Bring the family – non-anglers welcome!



okuma PRESENTS Nauti Girls

BOUGHT TO YOU BY **Jennian HOMES**

Theme: Sparkle & Scales

\$40k in Prizes Including Cash

- ✓ Jan 30th & 31st 2026
- ✓ Briefing Fri 30th 7pm
- ✓ Prize giving Sat 31st 7.30pm
- ✓ Early bird prize

@ The War Memorial Hall



Breakfast Saturday & Sunday from 8am. Restaurant Open until 8.30pm during the busy period. Snacks & Pizza available pre-lunch. Bar Opens 11am. Club Closure Christmas Day & Boxing Day Only.

OPEN 7 DAYS | P. 07 865 8704 **WWW.OCEANSPORTS.CO.NZ** **END OF PORT ROAD AT WHARF**

For your **graphic design** needs

- Adverts
- Signs
- Posters
- Flyers
- Magazines
- Business cards
- Gift vouchers and more...

Contact Anna Gledhill
aljgledhill@gmail.com or 021 653 148

Designer for Whangamatā & Waihi News
and the Repco Beach Hop programmes

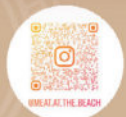


ALL YOU CAN EAT BBQ FESTIVAL *in Whangamata*



2 SESSIONS
12 PM - 4 PM
5 PM - 9 PM

4+ MEAT STATIONS
2 HOURS ALL YOU CAN EAT
ONSITE FULLY LICENSED BAR



Paul livens up our town



Have you seen our piano man Paul Clemo this Summer?

He has been playing outside the Whangamata Information Centre and volunteering his time with live music, for everyone's enjoyment.

His piano is on wheels so it can be moved to different locations and he encourages others to play or jam in with him or with other instruments, the piano is stored safely overnight.

Other people can play on the piano if they wish too, just last week he had an Iranian concert pianist play

and also a Swedish girl, children have had a go and an English flautist also jammed in with Paul.

Paul is a 70-year-old retired electrician from Auckland and has been living in Whangamatā for several years.

Isn't that fantastic, people who pay it forward, for the enjoyment of others. There is nothing else like live music on a hot summer day in downtown Whangamatā. Thanks Paul, know you are appreciated!

- Photo by Mark James



WHANGAMATA

Lunch en Blanc

Saturday 21st February 2026 12-4pm

Back by popular request, don't miss out this year, this is your excuse to take a pause from your busy lives, invite your friends, with an opportunity to make new friends.

Location – well that is a well kept secret, until the day.

So simply gather your friends, put the date in your diary and scan the QR code to register.



Numbers are strictly limited, \$45 per person.
BYO picnic lunch and beverages.
Tables, chairs and umbrellas and live music are all provided.
Profits are supporting Whangamata Harbour Care.





Moana Anu Anu is calling for help – are we listening?

Environmental damage rarely arrives with a bang. More often, it arrives slowly – because we stop noticing it.

In Moana Anu Anu and the upper Whangamatā Harbour, changes that would once have caused alarm are now familiar: black, oxygen-depleted mud, surface sludge, stagnant water, and strong odour during warm periods. These are no longer shocking. That is the familiar scene we have lived with for years, because we did not realise how much harm it is causing. For decades, Moana anuanu has been giving us signals. But we haven't always been listening to the right cues.

Those who cared deeply about the harbour did act. Many focused on the most visible change – the spread of mangroves. In doing so, they responded to what they could



Stinky black mud covering Moana Anu Anu.

see and touch. But over time, that focus hardened into an idea: that environmental damage could be reversed simply by chopping off a few mangroves, without addressing what caused the conditions for them to grow in the first place.

That leaves an uncomfortable question. Is it an acceptable trade-off to keep expanding forestry, farming, and housing density – knowing this increases fine



Jar separation tests showing sludge.

sediment delivery into our rivers and harbour – as long as we remove a visible symptom? It cannot be because whilst this debate went on the sediment carriers and binders changed our shellfish beds, fishing grounds, recreation, bird life, clean waterways – we traded our sandy flats for short-term economic convenience?

Because this is what the conversation missed: mangroves

are not the beginning of the story. They arrive as conditions start changing – when sediment carries fine material that settles, tidal water flushes no longer have the ability to keep them in suspension, cloudy water stays longer, oxygen drops, and the system shifts into what we now see.

The damage is far from normal, yet we stopped asking whether it is avoidable. We tell ourselves it is simply the cost of growth, living, and progress. But nature does not respond to reassurance. It responds to time, physics, and biology. Before we talk about fixes, projects, or solutions, we need to understand one simple question: **What is the build-up of sediment really telling us?** A group of locals are finding this out and you'll be able to read it here.

– Ian Holyoake, Rob Boston

Whangamata MenzShed busy with community projects

Members of the Whangamata Community MenzShed have been kept busy over recent months with a wide range of projects benefiting both the shed and the wider community.

In the lead-up to Christmas, a steady stream of pre-ordered wooden Christmas trees rolled off the production line. Made from recycled wooden pallets, these proved popular with locals. Members have also produced a number of bird feeders, which were sold at various markets around town.

Two significant community projects have recently occupied several members. Construction of a new wooden fence along the Whangamata Area School boundary on Achilles Road has been completed, while refurbishment of the platform seating on Hunt Road is ongoing.



The MenzShed continues to undertake a variety of projects, including selected repair work. Jobs are accepted at the discretion

of the shed, as it is not the role of MenzShed to compete with local tradespeople or handymen.

The shed currently has around



35 members and is always keen to welcome new ones. Ladies are very welcome, with three female members currently involved in a range of personal and community-based projects.

The Whangamata Community MenzShed is open on Mondays and Thursdays from 3.30pm to 5.00pm, and on Saturday mornings from 9.00am to 12.00 noon. Community members are encouraged to pop down, have a look around, and say hello.

– Rob Boston



MAIN STREET RALLY

20 & 21 MARCH • WHANGAMATA

**DOWNTOWN BIKE SHOW
CORO LOOP RIDE
CFMOTO ADVENTURE RIDE
LIVE MUSIC**



Amazing rock covers band 88MPH
Saturday night only 8pm to late
Tickets \$20 for live music show only

CAMPING AVAILABLE

TICKETS AVAILABLE NOW AT:

KICKDOWN.CO.NZ



Books

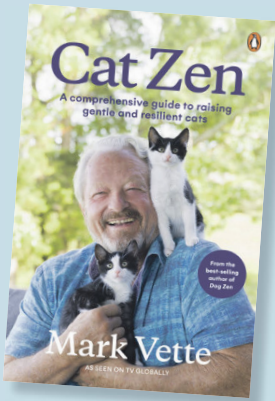
CAT ZEN

MARK VETTE

Unlock the secrets of your feline friend with Cat Zen by Mark Vette.

Drawing from over four decades of experience, Mark Vette offers a fresh perspective on understanding and training cats and kittens.

This book is more than a manual; it's an invitation to see your cat with new eyes. Discover science-backed and proven techniques to nurture your cat's intelligence and



social skills, build a lasting bond, discourage hunting and address behavioural issues.

LAST RITES

OZZY OSBOURNE

Husband. Father. Grandfather. Icon. 1948-2025.

"People say to me, if you could do it again, knowing what you know now, would you change anything? I'm like, f*** no. If I'd been clean and sober, I wouldn't be Ozzy. If I'd done normal, sensible things, I wouldn't be Ozzy."

Last Rites is the shocking, bitterly hilarious, never-before-told story of Ozzy's descent into hell. Along the way are reflections on an extraordinary life and career, including his marriage to wife Sharon, and what it took for him



to return to the stage for the triumphant Back to the Beginning concert, streamed around the world, where Ozzy reunited with his Black Sabbath bandmates for the final time.

BOTH BOOKS ARE AVAILABLE FROM WHANGAMATA BOOKS & PAPERPLUS WAIHI

Whangamata Theatre Society

AUDITION INFORMATION

BEST OF BRITISH

Created By Denise Boston

After the roaring success of the last show "Spotlight on Broadway", the Theatre Society is now preparing the next production. **"The Best of British"**, an interactive, lively nostalgic extravaganza of British iconic pop music, comedy show skits and more from the 1960's 70's 80's and 90's. It's a blast from the past that will get you singing and toe tapping.

AUDITIONS:

These will be held at Cornerstone, Ocean Road on Sunday, 8th February. Prebooked auditions will be between 1-3pm and open auditions from 3-5pm as well as Monday, 9th February from 6.30pm until 9pm.

SHOW DATES:

From 15th May 2026 opening with two matinees and six evening shows at the Whangamata Memorial Hall. There will cabaret seating where you can comfortably sit, drink and enjoy.

CAST REQUIRED:

The cast required for this extravaganza are adult and youth singers, dancers, (8 years and older) together with any interesting entertainment pieces that can be included.

FURTHER INFORMATION:

Please come with a prepared song or skit. Ensure that you have a backing track or music on your own device. Alternatively a selection of songs will be available with backing tracks and lyrics provided. If you wish to be a part of the dancing, be prepared to learn a simple routine.

To pre book an audition time or for any further information please contact Denise on 0211226564 or email denise@newyou.net.nz for a list of the songs.

ADVERTORIAL

Art & Writing Challenge celebrates 10 years

The Harcourts Art and Writing Challenge marks its 10th anniversary in 2026, promising a spectacular creative showcase from 23-25 January.

This judged event sponsored by Harcourts features the theme "North, East, South, West" and offers four categories across both 2D and 3D work. Renowned artist, facilitator, and long-time judge Ron Left will lead the visual arts judging, including the youth section.

The Writing category: creative writing and poetry—will be adjudicated by Michael Moynahan of Auckland, whose extensive background in publishing brings valuable expertise to the competition. The Writers category is kindly sponsored by The Whangamata Club.

All sections have significant prize money on offer and it's a fantastic opportunity for emerging and established creatives alike.

The Arts Collective warmly invites artists and writers from across the Coromandel and wider regions to enter and be part of this milestone year.

Festivities begin on Friday, 23 January, at 5pm with the prestigious awards ceremony, exhibition opening, nibbles, refreshments, and the coveted first chance to purchase artworks.

The exhibition continues Saturday and Sunday, 10am-4pm, alongside the Big Arts Day Out, where artists can sell work, meet the public, and immerse themselves in a vibrant community arts weekend.

A special tribute will honour the past nine Supreme Winners, with an opportunity to view—and possibly purchase—a piece of their work.

All information and further details can be found on the Whangamata Arts Collective website.

If anyone has problems questions regarding the entry forms online, please contact: Maree Burt 021 211 9879 or Heather Watt 027 388 8007.

Get in quick and purchase your tickets for the awards evening on the Friday, 23 January. The tickets are \$25 each and available at Discover Whangamata, Port Road.

Annual Art exhibition

Celebrating 10 years of the



HARCOURTS ART CHALLENGE & BIG ARTS DAY OUT

23 - 25 JAN 2026

Whangamatā Memorial Hall

Harcourts Challenge

Prize-giving evening 23rd Jan
5pm - 8pm

Tickets from Discover Whangamata

Big Arts Day Out

24th & 25th Jan
10am - 4pm

Koha entry

Artist entry forms online at
www.artscollective.co.nz

Harcourts
Whangamata



All go at the pool

It's been all go down here at the Whangamatā Community Swimming Pool this summer, with locals and visitors rolling in to chase the sunshine and relax poolside. It's been epic seeing our local surf clubs, water polo squads, and holiday goers making the most of the pool.



Amongst the normal chaos, inflatable days have been a massive hit, aquarobics classes have reached record numbers, and lane swimming continues to be a crowd favourite. We even managed to squeeze in a few ocean swimming clinics, thanks to the legend Scott Wills!

So what's next? Thanks to Whangamatā Scaffolding we're stoked to be holding a local Manu Championship, kicking off on



Saturday 24 January. For more details on this check out our pool's Facebook page!

The Whangamatā Learn to Swim Programme and The Whangamatā Amateur Swim Club are also gearing up for Term 1 to begin. For further

enrollment information please check out whangapool.co.nz and the Whangamatā Amateur Swim Club Facebook page.

We've had loads of awesome feedback, and we just want to say a big thank you to all our Pool Goers



for continually supporting us, we couldn't do it without you all!

- The Whangamatā Pool Crew,

3 years on: Where are the stormwater solutions?

It is now three years since Cyclone Gabrielle exposed the reality that stormwater was not on the council's radar.

Since then, WSAG has engaged with Council, made numerous submissions, attended workshops, and consulted in good faith. WSAG was formed as an open forum of local residents following Cyclone Gabrielle to support constructive engagement on stormwater issues. We were told that participation, local knowledge, collaboration, and trust would result in a stormwater Master Plan the community could understand and rely on.

Three years on, the uncomfortable truth is this: Whangamatā still does not have a stormwater master plan. That is not a technical failure. It is a governance one.

Project-by-project responses such as the Williamson Wetland and the Hetherington Road pipe upgrade have proceeded without a clear strategic framework. Effective stormwater solutions require:

- an agreed understanding of catchments,
- prioritisation based on risk and fairness,
- clarity about what can and cannot be fixed, why, and how,
- clarity about who pays and why, and
- transparency about what decisions are being made, and where.

Without a master plan, individual projects — no matter how well-intentioned — risk being disconnected, reactive, and contested. WSAG has invested hundreds of unpaid hours trying to

bridge this gap. We have analysed council documents when they were eventually provided and prepared draft master planning material ourselves — not because it should be our role, but because there was no other way to move the conversation forward.

After three years, trust has been eroded. Engagement processes remain unclear in terms of their purpose, who holds decision-making authority, and how community input meaningfully influences outcomes. This has left many residents uncertain about the value of participation. This article sets out what outcomes are in front of us — or more accurately, the lack of them.

After three years, the community deserves:

- a clear stormwater master plan,
- transparent engagement settings,

and

- a focused working group tasked with delivering long-term resilience.

Cyclone Gabrielle was a warning.

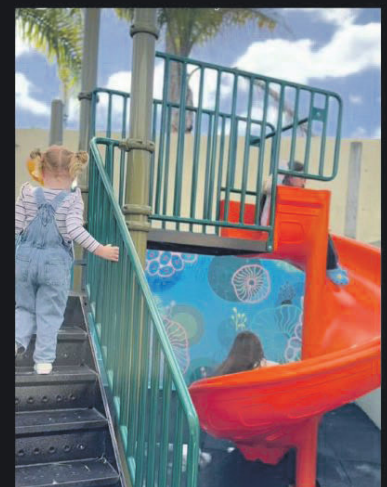
Whangamatā is full of people willing to help, contribute, and engage constructively, but goodwill is not infinite. An external oversight process is now underway to examine concerns about transparency, engagement processes, and decision-making. That process exists to restore clarity and confidence — not to delay solutions. The community has a right to know that such oversight exists when public trust and public money are involved.

We owe it to our town — and to future residents — to build resilience with clarity and confidence.

- Ian Holyoake & Rob Boston WSAG

SMOKY PALLET

FREEHOUSE



WHERE TO BE OVER SUMMER!

@Smokypalletwhanga

@Smokypallet

How MTFJ helped Admire find his path

When Admire Hardwidge was given the opportunity to pursue a butchery career last year, he wasn't just starting a new job - he was beginning a new chapter in life.

Originally from Taumarunui and with a background in dairy farming, Admire was looking for a fresh start. Thanks to the Mayors Taskforce for Jobs (MTFJ) Community Employment Programme (CEP) and Meat at the Beach in Whangamatā, he found it.

"I used to be a little rascal when I was younger," Admire laughs. "This opportunity has helped me mature and my mental health has gone through the roof - it's better now."

Owners Steve Hall and Janene Braithwaite say finding staff in butchery is tough. "It's hard to get employees interested in the field because it's hard work," Janine explains. "But Admire's attitude is amazing. He's willing to give everything a go, takes feedback on board, and just gets on with it."

From preparing sausages and slicing bacon to setting up the display cabinet and cleaning, Admire is learning every part of the process. "We're really impressed with where he is already," says Janine. "He's resilient, and he doesn't take things personally. Plus, it's great hearing him and Steve cracking up out the back - it's hard work, but they're having fun."

Recently, Meat at the Beach won



Left to right: Steve Hall - Meat the Beach owner, Simone Hughes -Whangamatā Youth Trust, Admire Hardwidge and Helen Flynn - our Council's Community Partnerships Co-ordinator.

a bronze medal for their Real Beef sausage in the 2025 Dunninghams Great NZ Sausage Competition (pictured left) - one of the sausages Admire helps make. "We were very proud to have Admire and the team represent us at the prize giving," says Janine. "It's a real testament to the quality of work and the pride he takes in learning the craft."

The journey wasn't just about skills - it was about support. MTFJ helped with essentials like uniforms and even assisted Admire in getting his full driver's licence. CEP is a nationwide partnership between MTFJ and the Ministry of Social Development (MSD), focused on getting young people into sustainable employment. It works at a grassroots level, giving councils the power and funding to tailor

solutions to local challenges. "We wouldn't have found him without MTFJ," Janine says. "The support from Simone Hughes, (Whangamatā Youth Trust), and Helen Flynn,



(Thames-Coromandel District Council Community Partnerships Co-ordinator), to match the right person and keep in touch has been priceless."

Steve and Janene have found their partnership with MTFJ so rewarding that they've continued working closely with the team to bring another young jobseeker on board. Mana joined the Meat at the Beach team at the end of October 2025, and like Admire, he's proving to be a great asset. Steve and Janene describe these rangatahi as outstanding employees and remain committed to helping them learn, grow, and build successful careers in the industry.

Admire's advice for other young people? "Hard mahi my guys. That's all you need. Head down, mahi on, and you'll get somewhere in life."

This is what MTFJ's Community Employment Programme (CEP) is all about - community-led solutions making a real difference. MTFJ recognises that one size doesn't fit all, and CEP demonstrates what can be achieved when central and local government work in partnership. Through its collaboration with Local Government New Zealand (LGNZ), MTFJ unites mayors across Aotearoa in a shared vision: engaging all young people aged 16-24 in meaningful employment, education, or training within their communities.

- supplied - TCDC

Curtains and Blinds and More

CURTAINS
ROLLER SHEERS
BLINDS
WHANGAMATA
SHUTTERS HOME BACH
BEACH PAUANUI
VENETIAN BLINDS
WHIRITOA SURF
THERMALS BLOCKOUTS
 Contact Louize or Gavin
027 4777 916
 FREE NO OBLIGATION MEASURE AND QUOTE
 email info@curtainsandblinds.co.nz
www.curtainsandblinds.co.nz



BOOFBOLAND
 PAINTER & DECORATOR

P O Box 410, Whangamata 3643
M: 0274 367 254
E: jenboof@outlook.com






FLOORING TO SUIT YOUR STYLE

CARPET • VINYL • TIMBER • LAMINATE • RUGS

Phone or email us! We're measuring & laying! View samples instore!

WHANGAMATA FLOORING XTRA

Whangamata | 636 Port Road | 07 865 8562 | whangamata@flooringxtra.co.nz

Our Coromandel

News from Thames-Coromandel District Council



23 January 2026

Council workshops made public

Council workshops will now be open to the public in order to promote greater transparency.

Previously, these workshops (non-decision-making forums for briefings or exploring issues) had been closed. Now workshop dates and topics will be published in advance, and the public can attend in-person or online. Notes of what was discussed will be published on our website afterwards.

Check out all Council and Community Board meetings here tcdc.govt.nz/meetings



NEW COROMANDEL TRACKS AND TRAILS GUIDE

Rediscover the beauty of the Coromandel Peninsula on foot, by bike or with a four-legged friend. Our brand new digital guide makes outdoor adventures easy. Explore the Coromandel through interactive maps grouped by area, or by your choice of sole or journey type. It's packed with hikes with spectacular views; short, easy town walks exploring art and culture; paths to gorgeous swimming spots; mountain biking trails; and dog walking or horse riding routes.

tcdc.govt.nz/coromandeltrails



What's happening over Anniversary & Waitangi weekends?



KERBSIDE COLLECTIONS AND TRANSFER STATIONS

For year-round kerbside collection calendars, including summer peak collection dates from Christmas week to Waitangi week, check your local schedule at tcdc.govt.nz/bindays or pick up a hard copy at your local Council office.

Our seven refuse and recycling transfer stations are open daily over summer from 8.30am–5.30pm except Christmas and New Year's Day. They are open Anniversary and Waitangi Day. tcdc.govt.nz/rts



OFFICES | DISTRICT LIBRARIES

Our offices (including AA services) and district libraries will be closed on Anniversary Day, Monday 26 January, and Waitangi Day, Friday 6 February. You can still reach us 24/7 at 07 868 0200 or customer.services@tcdc.govt.nz



DOG RESTRICTIONS

Many of our beaches have summer restrictions on dogs. Look out for Council's traffic light signage and check the rules in your area at tcdc.govt.nz/dogownerguide



ALCOHOL BANS

Alcohol bans are in place over Anniversary and Waitangi long weekends. Check out tcdc.govt.nz/alcoholcontrol

tcdc.govt.nz/summerinfo

WATER DELIVERY PLAN



Council has approved an updated operating expenditure budget of \$234,000 for the 2025/26 year to help with implementation of our

Water Services Delivery Plan. It's \$400,000 less than the initial forecast if we'd gone into partnership with nearby councils.

Council has reaffirmed our intention to continue progressing an internal business unit for water services under the Local Water Done Well reform. At the same time we're also exploring partnership opportunities with Tauranga City Council and Western Bay of Plenty District Council. tcdc.govt.nz/lwdw

Every drop counts

Over the summer we're asking you to be careful with water use – particularly outside with sprinklers, paddling pools or hoses.

With drier weather and more visitors, the pressure on Council's water supply systems increases. We're monitoring water availability closely. Where necessary, we'll put in place water restrictions. They'll be announced on local radio, our website and Facebook page.

Check out water conservation tips at tcdc.govt.nz/savewater



FIRE RESTRICTIONS

We're in a restricted fire season. A permit is required for any open-air fires and private fireworks are banned. Check if fires are allowed and apply for a permit at checkitsalright.nz or call 0800 658 628.

Let's keep our communities safe this summer.

Know your local dog rules

Follow our traffic light signs to understand our dog rules. Our default rule is that dogs are to be kept on lead; so when in doubt, keep your dog on a lead.



Green signs denote exercise areas:

You can have your dog off lead, but it must be under control at all times.



Orange signs denote on lead areas:

Your dog must remain on lead for times noted on the sign.



Red signs denote prohibited areas:

This means no dogs at all. Most beach area prohibitions are either during the dotterel nesting season from Labour Weekend to 1 March, or over the summer period and holiday weekends. We also have areas that are prohibited all year round.

tcdc.govt.nz/dogrules

OUR NEXT WHANGAMATĀ COMMUNITY BOARD MEETING WILL BE 10AM TUESDAY 10 FEBRUARY
AT THE WHANGAMATĀ SERVICE CENTRE, 620 PORT RD

[@ThamesCoromandelDistrictCouncil](https://www.facebook.com/ThamesCoromandelDistrictCouncil)

[coromandel_tcdc](https://www.instagram.com/coromandel_tcdc)

Get our free eNewsletters!
www.tcdc.govt.nz/subscribe

tcdc.govt.nz

customer.services@tcdc.govt.nz
Private Bag, 515 Mackay St, Thames
Phone: 07 868 0200

Waihi NEWS

"Running is like flying for me"

Tamahau Hicks beat his personal best with Sam Ruthe at the Tauranga Colgate Games on 10 January.

When the urgent call went out for a guide to run alongside a young athlete in Tauranga, rising Kiwi track star Sam Ruthe answered.

The 16-year-old, who holds almost every national record for distances between 800-5000m in under-16s through to U20s, was a surprise starter in the Colgate Games on Saturday morning 10th January, lining up to guide visually impaired athlete 12-year-old Tamahau Hicks in his 1500m race.

Ruthe had already been planning to attend the event later in the day, where athletes between 7-14 years compete, to help with medal presentations and meet some of the athletes. He was more than happy to assist as guide for Tamahau. Incredibly, he knocked 40 seconds off his PB in the para boys 1500m, going sub 6 minutes, a huge thanks to Sam.

We met up with Tamahau and his proud Mum Emily Kay to hear how it all unfolded for him.

She told us I got a message at 7am that morning, Tamahau's guide was



ill and couldn't make it, I thought oh no, Tamahau has to race in three hours, we ran around frantically, approaching everyone we could think of, and couldn't find anyone, so I put a post out on Run Aotearoa, Andrea Neal from Tauranga Athletics saw the Facebook post and got in touch.

Sam paced him at a 4 minute pace on 1500m, 1km to 4 minutes,

and letting him know of obstacles coming up. Keep in mind, Tamahau can't see anything except the white rail of the track, being why he always runs in lane one.

When I asked Tamahau how it felt to see Sam on the track waiting for him, he said "it was pretty cool" – they proved a winning combination.

Tamahau is a member of Achilles Tauranga Moana and the Te Aroha



Athletics Club.

He has been running for two years, I asked him "Why the passion for running?"

"I knew my visual impairment was bad, I have to quit rugby soon, I found another sport – running."

Hicks has a traumatic brain injury that impacts his depth perception, balance and co-ordination.

TYRE HQ

WAIHI

LATEST TECHNOLOGY JUST INSTALLED!





KUMHO TIRES

**PRECISION WHEEL ALIGNMENT - POWERED
BY THE LATEST JOHN BEAN TECHNOLOGY**

07 863 9211 | WWW.TYREHQ.CO.NZ

Owens Flooring

We Have All Your Flooring Needs Covered
Flooring Sales & Installation • Domestic & Commercial

**Carpets • Vinyls • Floor Sanding
Laminate & Timber Planking**





Showroom: 5/57 Wilson Road at Waihi Beach
07 863 5723 / 027 233 7277
sales@owensflooring.co.nz • www.owensflooring.co.nz



Baker Glass & Glazing Ltd

"Craftsmanship with care"

- Glass Repairs
- Shower Glass
- Splashbacks

- Balustrades
- Retro-fit Double Glazing
- Insurance Quotes

Member AMN
Masterglaziers network
Proudly supported
by Metro Glass





Contact 021 514 497 | glass@bakerjoinery.co.nz

Waihi NEWS



Tamahau won five medals from the Colgate games 2026 covering discus, 100m, 400m, 800m and 1500m on the 3-day event and a first medal from Aims Games last year (just one second from breaking the record) for Cross Country athletes with a disability, with a

modified track and two guides required, because of the difficulty.

Emily says when asked how the journey is for her "Its a lot of driving, my son has done 54 half marathon events, and 20 or 30 events like the Colgate event. We travel all over the

country for marathons, Christchurch, Queenstown, Auckland, Taupō, and Wellington."

Tamahau is dedicated, consistent and driven, he trains around the Waihi pit rim, Waihi college grounds and the Fitzone Gym with a dedicated regime. He wants to thank his Sponsors, Waihi Fitzone Gym, NES Hire, Toy World Waihi, all of whom assist his dream.

All costs add up, even with event fees cheaper as a child but next year he will move up, When he turns 13 at the end of the year he will be eligible to break New Zealand para records. He plans on breaking the T20 under 17, 10 km road running record as soon as he is eligible.

I asked him "when you are really doing long distance what do you think about when you are approaching the end?"

"I don't know really, its like flying for me." He likes the 5km and 10km is his run of choice. "Its pretty fun."

Head phones help Tamahau with his pacing, he finds music of his choice and plays it at the pace he wants to run, running to the beat, then once he wants to run faster he changes the beat, finding every way to achieve.



We couldn't be more proud of our Tamahau, if you didn't know he delivers my Whangamatā & Waihi News to 350 homes, and runs while delivering them ! He has had a paper run since he was 7-years-old, saving all his dosh for computer accessories,

Perhaps there is a generous petrol station reading our piece, who could assist with some petrol vouchers, it sure would be would be a huge help...

- Jennie Black and
photos by Mark James

100% HOME WAIHI

Summer BEST BUYS!

beko Freestanding Oven BFC60VMW1

- 72 litres useable capacity
- 8 cooking functions
- 4 hob Vitreoceramic cooktop
- Multidimensional cooking
- Telescopic pull-out shelf
- LCD timer
- Splashback
- Catalytic liners
- Includes 1x standard cooking tray and 1x deep cooking tray
- H 900 x W 600 x D 600 mm



\$1499



beko Front Load Washing Machine BFLB903ADG

- 9kg capacity
- 15 wash programs
- SteamCure Hygiene steam cycle
- Autodose System
- Control over Wi-Fi with Homewhiz app
- 1400rpm maximum spin speed
- ProSmart inverter motor
- 4 Star Water rating & 5 Star Energy rating
- H 845 x W 600 x D 580 mm

\$1099



beko Top Load Washing Machine BTL90W

- 9kg capacity
- 10 wash cycles
- Direct drive motor
- Drum clean program
- SmartTouch control dial
- Air-dry Programme
- Soft close lid

\$999

100% HOME WAIHI

24 ROSEMONT ROAD, WAIHI • PHONE 07 863 8207
email waihi100@xtra.co.nz • www.100percent.co.nz

We've Got Your Back

We're always checking price
Talk to us.



Waihi NEWS

Waihi Beach MenzShed crack on

Workshop lights on, milk in the fridge, turn urn filled and switched on and let the action begin at the Waihi Beach MenzShed. Every Tuesday, Thursday and Friday from 9am through to midday the good men get to work on both community and personal projects.

With over 60 members, the MenzShed brings together a huge variety of skills and experience that includes woodworking, mechanical, boat building, automotive and jewellery. The individual skill



descriptions are varied from the classic 'jack of all trades' to the humble 'just a butcher but I help out where I can...' and the honest 'helping'. The character of the MenzShed includes learning something new, building confidence, less social isolation and enhancing self-esteem. The practical activities in the MenzShed provide structure for life and the essential 'get up and go'. This includes making, fixing and lots of tinkering.

The smoke-free Friday morning 'smoko' is a popular gathering. Everyone has a chance to express a viewpoint on current affairs including rugby matches, referee decisions and the current price of fish.

The projects include making over 55 predator traps in 2025, refurbishment of 12 tables for the SurfShack, manufacture of wooden sun lounger, endless furniture repairs - chairs and tables, market days products of chopping boards, pizza boards, rolling pins and starling boxes.

The Waihi Beach MenzShed is located behind the Waihi Beach Community Hall and includes a wood workshop, a metal workshop and a flourishing vegetable garden.



From the MenzShed vege patch, Mike cultivates a feast of fresh seasonal produce that is shared with the greater Waihi and Beach communities.

The MenzShed acknowledge and appreciate the following Gold Supporters LJ Hooker, Freestyle Architecture, Waihi Beach Community Board, Valder Ohinemuri Charitable Trust,

Chartwell Charitable Trust, Gerrard family, Lions Club of Waihi, TECT, The Lion Foundation, G & V Jenkins. As well as Silver and Bronze supporters.

New members are always welcome and if you have a project either community or personal get on down and chat with the men.

- Don Mackay



WAIHI LIFECARE VILLAGE

EST. 1902

COTTAGES AVAILABLE

Located close to the township of Waihi, Waihi Lifecare Village is one of the region's most idyllic yet affordable lifecare villages.

Our cottages are set in a peaceful, rural setting with extensive lawn and garden areas which celebrate the heritage of the site.

The village offers a range of one and two bedroom cottages as well as a 65 bed care facility providing resthome and hospital level care for continuity of care.

We have cottages available soon so please contact us for more information or to book a viewing.

We look forward to hearing from you.



*Caring for the community
since 1902*

Waihi NEWS

Huge fun on Waihi inflatables

Thanks HDC! What a splendid, hot day for the Inflatables at the Waihi College Pool last week, crowds all in the water, loud squeals, laughter and families loving it all. Pristine water and always a lot going on at the Rata Street pool.

Note: On Sunday, 1 February, the Waihi Swimming Club will be hosting

the GO for GOLD swimming Carnival - loads of fun and food in a supportive environment. Warm up starts at 9.30am.

All beginners and club swimmers welcome, all enquiries to waihiswimmingclub@gmail.com

- Jennie Black, photos by Mark James



It's all go in Waihi

GO Waihi

Go Waihi, the local community promotion group, kicked off the year with energy. No sooner had they packed away the Christmas tree and wreaths than they began organising their next event.

Go Waihi was established in 1997 to promote the town and support its local businesses. The Society is governed by a small, dedicated committee of volunteers who organise popular local events like Christmas at the Lake, Shop and Win, the Waihi Warm Up Party, and Business after 5, creating opportunities for the community to connect.

Go Waihi is committed to promoting the Waihi area as an appealing and distinctive destination to live, work, and visit. The organization seeks to expand its business membership and has initiated a membership drive. Membership offers a range of advantages, including participation in Business after 5 events, opportunities

for networking with other businesses, and collaborative involvement in community events that contribute to the town's development.

Preparations for the upcoming Go Waihi Warm Up Party are in full swing. Each year, this event transforms our town into a hub of chrome, horsepower, and nostalgia, attracting over 300 hot rods and classic cars along with more than 10,000 visitors. Organising an event of this scale requires careful planning and significant funds. The Go Waihi team is currently seeking sponsorship from local businesses, so please reach out to them and help support this vibrant event.

Contact Go Waihi email
info@waihi.org.nz

Smart Buy furniture



\$1255

**Top quality
3-seater couch
2-seater \$999**



Inside BEDS R US WAIHI
94 Seddon Street, Waihi
07 863 8787



Inside BEDS R US WHANGAMATĀ
419 Port Road, Whangamata
07 865 9027

OceanaGold UPDATE

23rd January 2026



SPONSORSHIPS AND DONATIONS FOR 2025

In 2025, OceanaGold Waihi continued supporting many local groups and organisations. We are proud to have contributed to a diverse range of projects and events in the area, with a total investment in our communities of \$343,989.60 during the year.

SPONSORSHIPS AND DONATIONS APPROVED

Bowentown Boating & Sports Fishing Club	Support of Junior Fishing Tournament	\$500.00
CANSURF - Canteen	Running of Summer Camp	\$2,000.00
Go Waihi	Beach Hop - Waihi Warm Up Party	\$8,500.00
Go Waihi	Christmas at the Lake	\$3,500.00
Hauraki Rail Trail Charitable Trust	New Waihi information panel at Lawrence Rd access point	\$5,500.00
Hauraki Re-use Centre	Signage for shop	\$3,046.00
Hetherington House	Replacement of air conditioning system in dementia unit	\$6,600.00
Innovation Garden Club	Prize vouchers for competition	\$300.00
Karangahake School	Adventure Playground replacement	\$14,500.00
Katikati Concert Band	Concert Band workshop - hall hire	\$100.00
Life Hope Trust	Light Party community event costs	\$2,000.00
Ngāti Tamatera	Hauraki Māori Business Awards costs	\$10,000.00
Pacific Coast Technical Institute	Youth Week costs	\$1,000.00
Society of St. Vincent de Paul	Christmas food hampers	\$3,000.00
St. Joseph's School	Blackbird Music Nest, EPro8 Challenge, Maths-Whizz	\$14,000.00
St. John Waihi	Backup power supply genset	\$15,000.00
Te Waitangi o Hinemuri	Drinking water fountain and 20 Laptops	\$14,000.00
The Salvation Army Waihi	Foodbank supplies	\$6,000.00
Tu Slow Netball Club	Club Uniforms	\$2,035.50
Waihi A&P Association	Class prize vouchers	\$500.00
Waihi Arts Centre & Museum	Replace glass in rock and mineral cabinet	\$8,780.14
Waihi Association Football Club	Uniforms, First Aid Kits, and Goals	\$4,102.00
Waihi Athletic Junior Rugby	Uniforms for tournament	\$3,930.55
Waihi Athletic Rugby Football Sports Union	Flooring upgrade in clubrooms	\$9,775.00
Waihi Badminton Club	New club shuttlecocks	\$750.00
Waihi Beach Community Events & Promotions	Entertainment - band performance	\$2,500.00
Waihi Beach Memorial RSA Bowling Club	Prizes for tournament	\$750.00
Waihi Beach School	Inclusive Orbit Merry-Go-Round for playground	\$14,000.00
Waihi Bowling Club	Catering for tournaments	\$3,000.00
Waihi Budget Service Charitable Trust	Community event costs	\$1,000.00
Waihi Central School	Playground enhancements	\$34,500.00
Waihi College Gold Mine Education Trust	Scholarships and school resources	\$58,000.00
Waihi College Kapa Haka	Uniforms - polo shirts	\$3,662.75
Waihi Community Marae	Dishwasher, inlet bench, and outlet bench	\$8,476.95
Waihi Contract Bridge Club	Replace dishwasher	\$1,199.00
Waihi East School	2026 Year 5/6 School Camp, plus sports equipment	\$14,000.00
Waihi Fire Brigade	Mounting of water-tank on new truck	\$15,000.00
Waihi Floral Art Club	Area Day event; hall hire and expenses	\$630.00
Waihi Golf Club Womens' section	Prize vouchers for tournament	\$1,000.00
Waihi Swimming Club	First aid and swim training for coaches	\$3,220.00
Waihi Tennis Club	Cleaning products for courts	\$1,580.00
Waihi Touch Association	End of season trophies and medals	\$380.50
Waikino ARRA	Advertising for Art Waikino	\$2,010.00
Waikino School	Upgrade kitchen facility	\$14,000.00
Waimata Indoor Bowls	New bowls	\$2,740.00
Waimata School	Carpark and entrance upgrade	\$14,000.00
Whangamata Community Pool	New safety entrance to pool	\$1,316.48
Whangamata Croquet Club	Plumbing repairs and new hot water cylinder	\$1,577.73
Whangamata Harbour Care	Lures and baits for trap lines	\$3,000.00
Whangamata Hospice & Cancer Trust	New Palliative Care bed	\$3,027.00

2025 TOTAL
APPROVED WAS
\$343,989.60

OceanaGold UPDATE

23rd January 2026



2025 SPONSORSHIPS AND DONATIONS DECLINED

CAB Hauraki	Manager wages and operational costs	\$5,000.00
Dokkodo Karate Jutsu Academy Waihi	Floor mats	\$2,063.60
Hauraki District Council	Fund new swimming pool relining	\$35,000.00
Hauraki Plains College	Purchase of clay fired hangi pit	\$16,100.75
Hauraki Re-use Centre	Operational costs	\$5,000.00
Hauraki Waka Ama	Two new Waka	\$10,000.00
Katikati Concert Band	Hall hire costs for band rehearsals	\$1,800.00
Larry Gang FC	Uniforms for Labour Weekend Tournament	\$1,343.20
Mural Town Twilight Concerts Inc.	Costs of concerts for fundraising	\$17,501.85
Paeroa L&P BMX Club Inc.	Purchase of hats for prizes	\$5,431.45
SAGE Engineering & Seaperch – Rotorua	Travel costs to USA	\$5,000.00
Tairua Heritage Society	To purchase a building	--
Technology Education New Zealand	Interschool STEM Competition	\$5,000.00
The Focus Katikati Charitable Trust	Settlers Dance costs for 150th anniversary	\$2,000.00
The Salvation Army Waihi	Christmas Hampers	\$6,000.00
Waihi Athletic Rugby & Sports Club	Player Uniforms	\$17,400.00
Waihi Athletic Rugby & Sports Club	Ladies Netball team fundraising prizes	\$3,168.66
Waihi Beach Coffee Group	Venue hire for group meetings	\$2,880.00
Waihi Beach Primary School PTA	Colour Run fundraiser - materials costs	\$4,873.87
Waihi College Kapa Haka	Travel costs to Taiwan for 11 members	\$5,500.00
Waihi Swimming Club	Re-lining of swimming pool at Waihi College	\$35,000.00
Waihi under 14 rep. Netball Team	Umpire and tournament costs	\$2,295.00
Whangamata Area School	Fund eight students to attend 'Get2Go' Event	\$11,604.08
Whangamata Youth Trust	Salary for Youth Worker	\$10,000.00
Whiritoa Volunteer Fire Brigade	Purchase of drone with thermal imaging	\$15,502.10
TOTAL		\$225,464.56



IF YOU HAVE ANY QUESTIONS OR CONCERNS, PLEASE CONTACT US

Community Engagement Line: 0800 924 444 | Project Information Office: 86 Seddon St., Waihi
Email us via our website: www.waihigold.co.nz

PLEASE NOTE: We are not currently blasting in the Martha Open Pit. Any changes to this will be notified.

Whangamata Harbour Birds: The Caspian Tern (Taranui)

The Caspian Tern is a cosmopolitan species found in many localities throughout the world. It is thought to be a recent coloniser to New Zealand with sub-fossil remains found rarely and sightings not recorded by early naturalists until about 1860. Their population has increased slowly since then and now numbers around 1300-1400 pairs. Although widespread throughout the country they are still considered uncommon with numbers appearing to have declined since the 1990s. Their conservation status is Nationally Vulnerable protected native species.

The Caspian tern is the largest of all the tern species found in

New Zealand. It has a one metre wingspan and is roughly the same size as a black-backed gull. Their upper plumage is silver-grey with white below and smudgy black wing tips. During the breeding season adult birds have a distinctive black headcap to below the eye, which at other times becomes speckled with white and the edges less defined. Their bill is bright red and legs black. When flying they can often be heard emitting their loud, distinctive and repetitive harsh 'kaa, kaa' call.

Caspians occupy a variety of sheltered bays and harbours around coastal New Zealand but can also be seen regularly at inland lakes and rivers in Canterbury and the central



Caspian Tern in breeding plumage. Photo by John Adams.



Caspian Tern, non-breeding plumage. Photo by Bevan Walker.

North Island. They breed mainly on coastal sandspits and shell banks and occasionally on braided rivers and inland lakes. Most nest in large loose colonies of up to 100 pairs, but many nest singly or in association with other gulls (both red-billed and black-backed) and white-fronted terns.

One or two Caspian terns are seen regularly feeding in the shallow waters of the Whangamatā Harbour and resting at the high-tide roost site adjacent to the Beach Road Reserve. They seek small surface

swimming species such as yellow-eyed mullet, piper and smelt by flying up to around 15 metres above the water surface. When their prey is sighted they plunge-dive steeply, often completely submerging themselves in the process. If successful they quickly take-off and swallow the fish while in flight. They are also known to feed on schooling fish along with other sea birds but are usually solitary feeders.

– John Adams,
Whangamata Harbour Care

Lifestyle living in paradise



Willson Gardens
offer **2 bed fully refurbished units** with internal garage within peaceful picturesque gardens.

OR

Supported living in our **independent 1 bed apartment** with garden access and parking at your door.

On site **Moana House facility** provides a rest home and hospital level of care all in **one location**.

Contact us for more information
on 07 865 9643

For more information, please phone (07) 865 9643
Deborah Padfield (General Manager)
353 Tairua Road, Whangamata

MOANA HOUSE & VILLAGE

He whare ahuru – a caring safe place

WRE annual sandcastle competitions never disappoint

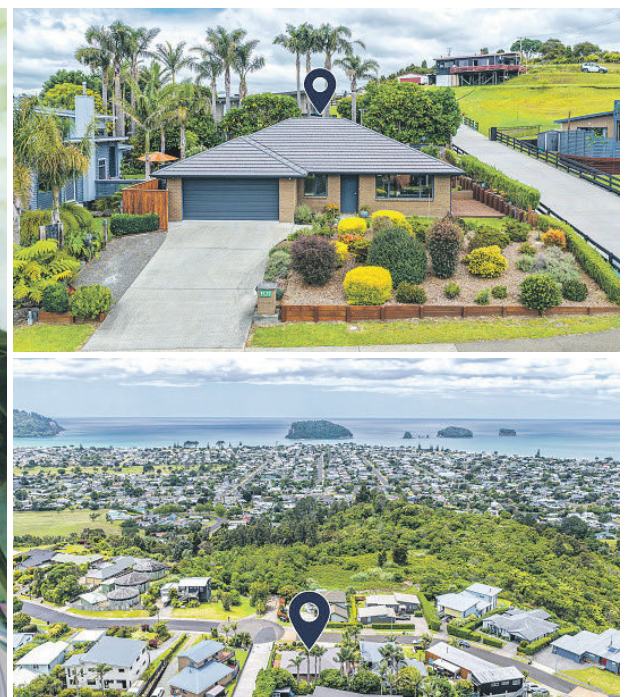
Great weather this year saw loads of families with big smiles, hats and love creating sea creatures, serpents and mermaids basking in the sun!

Thank you Whangamata Real Estate for great prizes and making the event a special time.

- Jennie Black



NEW LISTING



Whangamatā 101 Estuary View

Elevate yourself, quiet neighbourhood, quality residence

Modern coastal home offers an exceptional opportunity to secure quality, comfort and long-term livability. A 169sqm single-level dwelling provides a generous yet manageable footprint ideal for permanent residents, couples, families or those embracing a relaxed coastal lifestyle. The thoughtfully designed layout maximises natural light, ease of living and connection to the outdoors. The open-plan kitchen and living area is welcoming and functional, well-suited to everyday living and entertaining, flowing seamlessly to outdoor areas for year-round enjoyment. Accommodation includes three well-proportioned bedrooms, a master suite, two bathrooms and a separate office, offering flexibility for families or those working from home. A secure internal-access garage with an automatic door, quality chattels, double glazing and GJ Gardner Homes construction complete the package.

Establish yourself, where quality homes and permanent living come together

bayleys.co.nz/2221566

600sqm 3 2 2

Auction (unless sold prior) 11am, Thu 26 Feb 2026

96 Ulster Street, Hamilton

View by appointment

Dale Sholson 021 636 519

dale.sholson@bayleys.co.nz

Gordon McGregor 021 998 810

gordon.mcgregor@bayleys.co.nz

MH REALTY LIMITED, BAYLEYS, LICENSED UNDER THE REA ACT 2008



Whangamatā 141 Everitt Crescent

Olive grove on the harbour

Cherished by one family for more than 30 years, the estate blends the natural beauty of an established olive grove with a substantial 216sqm residence. This four-bedroom, three-bathroom home is oriented for sun and views, with generous living areas. Tranquil, private, and expansive, it is a setting that feels truly unique. Garaging and storage are standout features, with a large internal double garage, adjoining workshop, plus a detached double shed providing space for cars, boats, jet skis, campervans, or hobbies. An olive press is included in the chattels of this offering. The extensive grounds invite endless recreation. With its residential zoning and the sheer size of the land, this property offers options to create an oasis of your dreams, which adds further appeal. A preliminary development feasibility report is available. Equally suited as a holiday escape or a permanent residence, the estate delivers both lifestyle and opportunity.

A property that truly stands apart in Whangamatā.

bayleys.co.nz/2221332

10,160 sqm 4 3 4

Price by Negotiation
View by appointment
Dale Sholson 021 636 519
dale.sholson@bayleys.co.nz
Gordon McGregor 021 998 810
gordon.mcgregor@bayleys.co.nz
M H REALTY LIMITED, BAYLEYS, LICENSED UNDER THE REA ACT 2008



Whangamatā 203A Graham Street

Sophisticated coastal retreat steps from the surf

Steps from the sand and surf, this exceptional beach house combines refined coastal design with a truly enviable location. The property enjoys tranquil views across the dunes to the ocean while being set back just enough to provide privacy and calm away from the Esplanade's bustle. Beautifully proportioned and thoughtfully appointed, the home offers four generous bedrooms and two bathrooms across two levels. Every detail has been considered to enhance comfort and ease of living. From underfloor heating in the upstairs bathroom and a heat pump for year-round climate control, to the versatile rumpus or office space designed for working or relaxing in style. The open-plan living area flows seamlessly to a covered deck, creating an inviting space for entertaining or simply unwinding as you take in the ever-changing coastal light.

Perfectly positioned, less than 100 metres from the beach.

bayleys.co.nz/2221544

4 2 2 2

Auction (unless sold prior) 11am, Thu 5 Feb 2026
96 Ulster Street, Hamilton
View by appointment
Dale Sholson 021 636 519
dale.sholson@bayleys.co.nz
Gordon McGregor 021 998 810
gordon.mcgregor@bayleys.co.nz
M H REALTY LIMITED, BAYLEYS, LICENSED UNDER THE REA ACT 2008



Whangamatā 138 Moana Anu Anu Avenue

Prized position, versatile family living

Warm, welcoming and magnificently located, this substantial family home enjoys a prized position bordering Moana Point Reserve. Ready for its next family to enjoy, it delivers comfort, flexibility and an enviable upper harbour lifestyle. Upstairs, two generous bedrooms are complemented by excellent storage, including the master suite with walk-in-wardrobe. The newly renovated main bathroom is light, bright, airy, sleek and refined. The light-filled, open-plan kitchen, dining and living area is the heart of the home, flowing seamlessly onto a sun-drenched deck with tranquil reserve and water views. Perfect for entertaining or simply relaxing, the space has been enhanced with new louvres for year-round shelter and privacy. The contemporary kitchen, also enjoying the serene outlook, offers generous cupboard and bench space, making it both stylish and functional for busy family life. Downstairs provides outstanding versatility with two further bedrooms, plus the bonus of an office. The largest bedroom enjoys a heat pump, built-in-storage, its own bathroom and direct access to the outside. Ideal for guests, teenagers or those desiring separation of space. An internal-access double garage includes a workbench and additional storage for tools and beach toys. A rare blend of space, location and lifestyle, 138 Moana Anu Anu is prized family living at its best.

614sqm 4 2 2 2

Auction (unless sold prior)
11am Thurs, 5th Feb 2026
96 Ulster Street, Hamilton
View by appointment
Jerry Waddington 027 314 0707
jerry.waddington@bayleys.co.nz
M H REALTY LIMITED, BAYLEYS, LICENSED UNDER THE REA ACT 2008

bayleys.co.nz/2221526



After 30 years of holidaying in Whangamatā, my family and I are proud to now call this wonderful place home. Real estate is in my DNA. With my mum running a successful agency in Wellington, I grew up in the property industry, which sparked a passion that's never left. Over the past five years I've built a strong track record selling homes in Lower Hutt, recently recognised as **Bayleys Lower Hutt's #1 agent**. Coming from one of New Zealand's most competitive markets, I know what it takes to deliver outstanding service and achieve great results.

I've hit the ground running, having already helped several families with their Whangamatā sales, and I'm excited to continue to bring my experience, dedication, and personal approach to a community I've loved for decades.

Whether you're buying, selling, or just exploring your options, I'm here to help.

Get in touch with me today. I'd love to hear from you.

Jerry Waddington
027 314 0707
jerry.waddington@bayleys.co.nz
M H REALTY LTD, BAYLEYS,
LICENSED UNDER THE REA ACT 2008





Auction

RayWhite



AUCTION

207A Ocean Road, Whangamata

- Filled with natural light and spacious
- Cleverly designed to wrap around the central deck, indoor-outdoor living feel completely seamless.
- Carpeted double garage, low-maintenance and is just minutes from the beach

Auction

21 February 2026 at 1:00pm at 503 Port Road (unless sold prior)

View

Sat 1 - 1:30pm
Sun 10 - 10:30am



Kiera Curd
027 251 8422
kiera.curd@raywhite.com



Tanja Stevenson
027 284 0911
tanja.stevenson@raywhite.com

rwwhangamata.co.nz/WHA30798
Golden Beach Realty Ltd Licensed (REAA 2008)

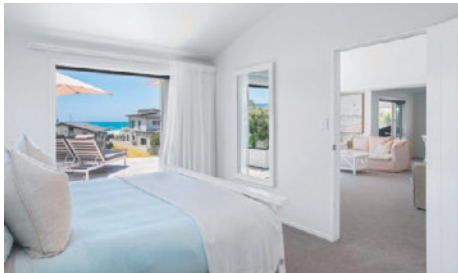
■ We bring the whole team

3 2 2 356



Auction

RayWhite



AUCTION

312b Beverley Terrace, Whangamata

- The perfect balance of luxury and comfort in this exceptional Beverley retreat
- Elevated to capture ocean views, this home delivers effortless entertaining and relaxed family living-all with the sea as your constant backdrop.

Auction

21 February 2026 at 1:00pm at 503 Port Road (unless sold prior)

View

by appointment



Reuben van Dorsten
021 104 6060
reuben.vandorsten@raywhite.com



Tanja Stevenson
027 284 0911
tanja.stevenson@raywhite.com

rwwhangamata.co.nz/WHA30799
Golden Beach Realty Ltd Licensed (REAA 2008)

■ We bring the whole team

5 3 2 1 541



Auction

RayWhite



AUCTION

123 Moana Anu Anu Avenue, Whangamata

- Warm and welcoming, a relaxed lifestyle in a quiet pocket close to the harbour reserve.
- Comfortable as it is, with scope to refresh over time
- Garage with additional utility space, including a shower, toilet and basin

Auction

21 February 2026 at 1:00pm at 503 Port Road (unless sold prior)

View

Sat & Sun
11:30 - 12:00pm



Jos Kennings
021 707 533
jos.kennings@raywhite.com



Reuben van Dorsten
021 104 6060
reuben.vandorsten@raywhite.com

rwwhangamata.co.nz/WHA30803
Golden Beach Realty Ltd Licensed (REAA 2008)

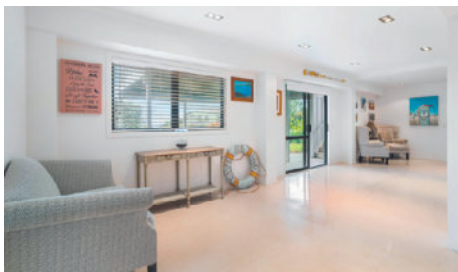
■ We bring the whole team

3 3 1 859



Auction

RayWhite



AUCTION

309 Onemana Drive, Onemana

- Elevated views across the beach, ocean and islands
- A short stroll to the beach.
- Main living area opens directly onto the deck
- Downstairs has been renovated with large games room or second lounge

Auction

21 February 2026 at 1:00pm at 503 Port Road (unless sold prior)

View

Sat & Sun
10:30 - 11:00am



Jos Kennings
021 707 533
jos.kennings@raywhite.com



Reuben van Dorsten
021 104 6060
reuben.vandorsten@raywhite.com

rwwhangamata.co.nz/WHA30373
Golden Beach Realty Ltd Licensed (REAA 2008)

■ We bring the whole team

5 2 2 629



FOR SALE

319 Otahu Road, Whangamata

- Original high ceilings, polished timber floors and a bright, modern extension filled with natural light
- Lined garage offers further accommodation or storage
- Decks on both sides and spacious lawns, utility

For Sale
\$1,530,000

View
by appointment

3 2 2 1 675



Roxy Pease
021 030 7589
roxy.pease@raywhite.com
Executive
Member of the

rwwhangamata.co.nz/WHA30511 We bring the whole team
Golden Beach Realty Ltd Licensed (REAA 2008)



BY NEGOTIATION

101 Esplanade Drive, Whangamata

Main Beach Grandstand, Luxuriously rebuilt, contemporary home offers an exceptional, front-row position directly above Whangamata Main Beach, providing panoramic ocean views. Engineered for long-term excellence & premium interior

By Negotiation

View
by appointment

5 3 2 2 522



Tanja Stevenson
027 284 0911
tanja.stevenson@raywhite.com



Kiera Curd
027 251 8422
kiera.curd@raywhite.com

rwwhangamata.co.nz/WHA30773 We bring the whole team
Golden Beach Realty Ltd Licensed (REAA 2008)



BY NEGOTIATION

4 Manuka Drive, Whangamata

- Contemporary home on an elevated site in a peaceful semi-rural setting
- Expansive green valley views and beautiful natural light throughout the day.
- Recently refreshed throughout, garage with an adjoining storage room

By Negotiation

View
Sat & Sun
12:30 - 1:00pm

3 2 1 3,003

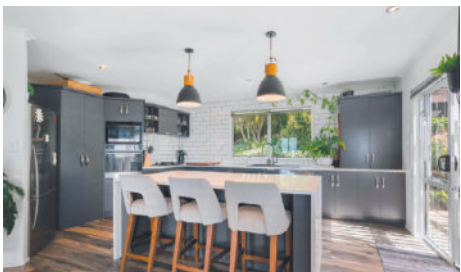


Jos Kennings
021 707 533
jos.kennings@raywhite.com



Sarah Kennings
021 707 544
sarah.kennings@raywhite.com

rwwhangamata.co.nz/WHA30601 We bring the whole team
Golden Beach Realty Ltd Licensed (REAA 2008)



BY NEGOTIATION

64 Waitete Road North, Waihi

- Situated overlooking the Waihi township
- Spectacular rural views
- Double internal garage plus further detached double garage/workshop.
- Paddocks for grazing stock or possibilities to lease it out

By Negotiation

View
Sunday 12:00 -12:30pm

3 2 2 1 4 1.82



Katrina Millar
022 102 2649
katrina.millar@raywhite.com

rwwhangamata.co.nz/WHA30135 We bring the whole team
Golden Beach Realty Ltd Licensed (REAA 2008)



Whangamata Real Estate

WHANGAMATA REAL ESTATE 2024 LTD (LICENSED REAA 2008)

Don't just dream it, live it

AUCTION



It's a Given

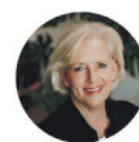
303B Given Avenue, Whangamata

3 1

Auction Saturday 31 January at 1pm (unless sold prior) at 328 Ocean Road, Whangamata

- 401sqm freehold title
- Single level dwelling with dual decks
- Level grounds with easy access and off street parking
- Carport and handy garden shed for extra storage
- Low maintenance construction, lawns and gardens
- Appeals as a holiday home, permanent or rental option
- Sunny aspect and popular location

Check QR Code for viewing options



Sharon Laurenson
M 027 662 3164
View Listing whanga.co/8572



AUCTION



Boaties Paradise

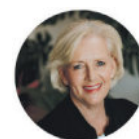
620 Harbour View Road, Whangamata

4+ 3 3

Auction Saturday 14 February at 1pm (unless sold prior) at 328 Ocean Road, Whangamata

- Located in the heart of the harbour and near the marina
- Views over the boat ramp and upper harbour
- North-facing, light-filled open-plan living
- Seamless indoor-outdoor flow
- Second lounge / family room plus dedicated office
- Internal access triple garage with workshop
- Fully fenced, gated grounds with easy-care lawns

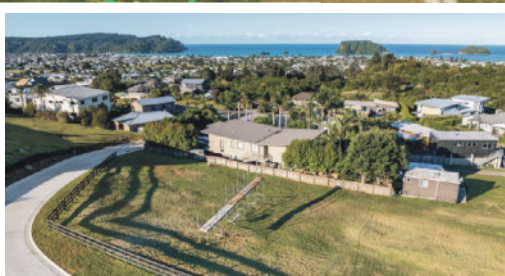
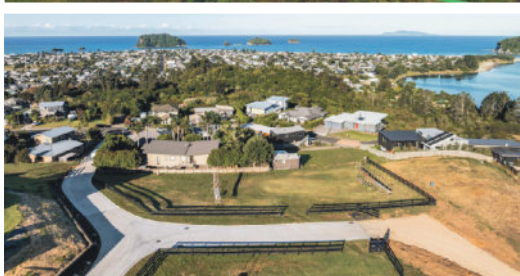
Check QR Code for viewing options



Sharon Laurenson
M 027 662 3164
View Listing whanga.co/8581



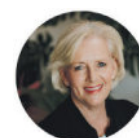
PRICED FROM \$755,000



Horizon Views Way Subdivision

409 The Drive, Whangamata

- Titles have now been issued
- Five elevated sections in Whangamata's newest subdivision - House & Land Packages available
- Outstanding views of Pacific Ocean, Outer Islands and Whangamata
- Natural surrounds and bush backdrop and ocean views
- Established post-and-rail fencing
- Access via private road (auto gate)
- Lot 1 \$755,000
- Lot 4 \$765,000
- Lot 5 \$875,000
- Lot 6 \$775,000
- Lot 7 \$825,000



Sharon Laurenson
M 027 662 3164
View Listing whanga.co/8473





Whangamata Real Estate

WHANGAMATA REAL ESTATE 2024 LTD (LICENSED REAA 2008)

Don't just dream it, live it

AUCTION



Beach & Bay Panorama

209A Esplanade Drive, Whangamata

3+ 2 2

**Auction Saturday 31 January at 1pm (unless sold prior)
at 328 Ocean Road, Whangamata**

- Waterfront property with panoramic views of the bay, Whangamata beach & surf break
- Dual north-facing upper-level decks with sweeping outlook
- Three/four bedrooms with great separation & guest facilities, two bathrooms (one on each level)
- Master bedroom with walk-in robe & private deck access
- Open-plan kitchen & living flowing to decks and views
- Internal-access double garage
- Wander to Blackies Café for breakfast or coffee
- Easy lock and leave, low maintenance property

Check QR Code for viewing options



Sharon Laurenson

M 027 662 3164

View Listing whanga.co/8571





Whangamata Real Estate

WHANGAMATA REAL ESTATE 2024 LTD (LICENSED REAA 2008)

Don't just dream it, live it



ENQUIRY
OVER
\$880,000

Lock 'n Leave on Leander

212A Leander Road, Whangamata

2 1

- Close to beach and town
- North facing deck creates central gathering space
- Cabin providing extra space or storage
- Carport and low maintenance features

Check QR Code for viewing options



Sharon Laurenson
M 027 662 3164
View Listing whanga.co/8472



ENQUIRY
OVER
\$950,000

Beachside Sweetheart

511C Ocean Road, Whangamata

2 1

- Opposite and overlooking Williamson Park and Surf Beach
- Refurbished unit
- Easy lock and leave option
- A great position so close to the beach

Check QR Code for viewing options



Sharon Laurenson
M 027 662 3164
View Listing whanga.co/8514



ENQUIRY
OVER
\$1.045M

Home to the Hamptons

112 Hampton Road, Whangamata

4 2 2

- 568sqm Freehold Title, level with easy access
- Open plan kitchen and bonus kitchenette
- Supersized garage and workshop
- Selling fully furnished and ready for Summer

Check QR Code for viewing options



Sharon Laurenson
M 027 662 3164
View Listing whanga.co/8569



ENQUIRY
OVER
\$2.1M

Size, Space, Surf, and Sunshine

107 Rangi Avenue, Whangamata

4 2 1

- Freehold 809sqm full site
- Popular address near surf beach and estuary
- Open plan kitchen and living area flanked by dual decks
- Second lounge or games room

Check QR Code for viewing options



Sharon Laurenson
M 027 662 3164
View Listing whanga.co/8568



\$2,195,000

Barrowclough - Beach & Bar

103B Barrowclough Road, Whangamata

4 2 2

- Desirable location three back from beachfront
- Sought after address in quiet beach side cul-de-sac
- Handy to beach, harbour, surf bar, town, cafes
- Views of the beach, bay and outer islands

Check QR Code for viewing options



Sharon Laurenson
M 027 662 3164
View Listing whanga.co/8457





ENQUIRY
OVER
\$775,000



Sun, Surf & Simplicity

211B Weka Street, Whangamata

2 1

- Handy to Island View Reserve, estuary, Williamson Park, surf club, and the surf beach
- A light-filled open plan kitchen, dining, and lounge area
- Great indoor / outdoor connection to sheltered deck
- Fully fenced and gated yard area
- Flat lawn with low-maintenance gardens
- Enjoy the simplicity of single level living

Check QR Code for viewing options



Sharon Laurenson
M 027 662 3164
View Listing whanga.co/8538



ENQUIRY
OVER
\$1.025M



Panoramic Ocean Vista

204A The Drive, Whangamata

3 2 2

- Stunning and expansive ocean and island vista
- Elevated with a north facing aspect capturing all day sun
- Versatile floor plan where you choose how to use the spaces
- New decor throughout with modern kitchen and new bathrooms
- Office space, hobby room / workshop
- Internal access double garage
- Easy care gardens

Check QR Code for viewing options



Sharon Laurenson
M 027 662 3164
View Listing whanga.co/8582



ENQUIRY
OVER
\$2.1M



Estuary Views

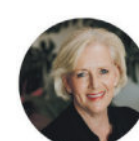
116 Patuwai Drive, Whangamata

3 2 2

To be sold by Deadline 3pm 12 February 2026
(unless sold prior)

- Water views overlooking grassy reserve to Estuary
- Across the road to reserve walks and swimming
- Level freehold 718sqm full site
- Second lounge or large fourth bedroom
- Open and spacious living area and wrap around decks
- Outdoor dining options
- Full site, big back yard
- Bathroom on each level

Check QR Code for viewing options



Sharon Laurenson
M 027 662 3164
View Listing whanga.co/8587





Whangamata Real Estate

WHANGAMATA REAL ESTATE 2024 LTD (LICENSED REAA 2008)

Don't just dream it, live it



ENQUIRY
OVER
\$1.2M

Single Level Simplicity

105 Avalon Place, Whangamata

3 2 2

- Single level easy open plan living and low maintenance property
- Master bedroom with walk in robe, ensuite and private patio
- Internal access double garage and fully fenced rear yard
- Bonus hot / cold outdoor shower

Check QR Code for viewing options



Sharon Laurenson

M 027 662 3164

View Listing whanga.co/8590



\$815,000

A Honey for the Money

106 Everitt Crescent, Whangamata

2 2 1

- Easy access level site in a quiet cul-de-sac
- Good indoor / outdoor connection to north facing patio
- Open plan kitchen, dining, lounge
- Additional family room plus office / playroom

Check QR Code for viewing options



Sharon Laurenson

M 027 662 3164

View Listing whanga.co/8487



REDUCED
TO
\$449,000

Vendor wants Sold

9/106 Barbara Avenue, Whangamata

1 1

- Sunny, elevated one-bedroom unit
- Ideal for weekend getaways or AirBnB
- Selling fully furnished
- Open-plan living with nice flow to balcony patio

View 10am Sat 24 Jan



Sarah Speedy

M 027 843 4013

View Listing whanga.co/8395



\$1,090,000

The Bigger the Better!

127 Tuna Place, Onemana

5 2

- Well-maintained & generous holiday home
- Spacious kitchen, dining and lounge taking in an ocean view
- Multiple outdoor living options
- Furniture package available

View 3pm Sun 25 Jan



Sarah Speedy

M 027 843 4013

View Listing whanga.co/8411



\$955,000

Easy Living on Everitt

135 Everitt Crescent, Whangamata

3 2 2

- Open-plan living and dining with a renovated kitchen
- Sunny north-facing veranda running the length of the home
- Master bedroom with ensuite and walk-in wardrobe
- 614sqm (more or less) freehold site

Check QR Code for viewing options



Chris & Katie Speedy

M 021 747 901 or 021 382 022

View Listing whanga.co/8547



Whangamata Real Estate

WHANGAMATA REAL ESTATE 2024 LTD (LICENSED REAA 2008)

Don't just dream it, live it



DEADLINE
SALE



Renovate, Rebuild, Redevelop

200 Mary Road, Whangamata

3 1 2

**To be sold by Deadline 3pm 11 February 2026
(unless sold prior)**

- Prime Surf Club Zone location in sought after streets
- Rare 809sqm (more or less) freehold, flat corner full site
- Original 1980s brick home with functional floor plan
- Large double garage/workshop
- Well appointed aspect
- Outstanding potential to renovate, rebuild, or landbank

View 11am Sat 24 Jan & 11am Sun 25 Jan



Sarah Speedy
M 027 843 4013
View Listing whanga.co/8584



DEADLINE
SALE



A Hidden Gem in Sharyn Place

107 Sharyn Place, Whangamata

4 1 2

**To be sold by Deadline 3pm 18 February 2026
(unless sold prior)**

- Beautifully renovated, single-level home or bach
- Sunny north-facing aspect with excellent outdoor living
- Stunning kitchen, new bathroom, flooring and paint throughout
- Versatile consented sleepout and garage
- Generous 924sqm (more or less) freehold section
- Immaculately presented property

View 12pm Sat 24 Jan & 12pm Sun 25 Jan



Sarah Speedy
M 027 843 4013
View Listing whanga.co/8574



DEADLINE
SALE



Architectural Entertainer

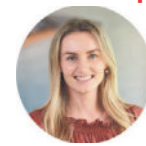
107 Russell Bruce Place, Onemana

4 3

**To be sold by Deadline 3pm 20 February 2026
(unless sold prior)**

- Architecturally designed by Hillary Priest, built in 2006
- Exceptional entertaining spaces with ocean view
- Standout kitchen flowing to outdoor living
- Private, tranquil setting with a variety of fruit trees
- Beach, tennis courts & cafe all just an easy stroll away
- Large 918sqm site (more or less) running directly onto a large grassy reserve

View 1.30pm Sat 24 Jan & 1.30pm Sun 25 Jan



Sarah Speedy
M 027 843 4013
View Listing whanga.co/8585





Whangamata Real Estate

WHANGAMATA REAL ESTATE 2024 LTD (LICENSED REAA 2008)

Don't just dream it, live it



Harbour Attraction

200A Harbour View Road, Whangamata

3 2 1

Deadline Sale closes 3pm 12 Feb 2026 (unless sold prior)

- Prime harbour, ocean beach location
- 3 double bedrooms + rumpus area
- Exterior reclad including double glazing
- Single garage plus carport

Check QR Code for viewing options



Colin Thompson

M 021 723 723

View Listing whanga.co/8578



Spacious Family Living

115 Chevron Crescent, Whangamata

4 2 1

Deadline Sale closes 3pm 12 Feb 2026 (unless sold prior)

- Permanent ocean and island views
- Peaceful elevated cul-de-sac location
- Modern kitchen with excellent views
- High stud rumpus room

Check QR Code for viewing options



Colin Thompson

M 021 723 723

View Listing whanga.co/8573



Ultimate Beachfront Escape

106 Tuck Road, Whangamata

5 5

- Prime beach location
- Substantial accommodation options
- Wide beach front boundary
- Comprehensive chattels list - ready to move in

Check QR Code for viewing options



Colin Thompson

M 021 723 723

View Listing whanga.co/8541



Development Opportunity

1006 Port Road, Whangamata

4 2 3

- Extra density zoning (1011m2 approx)
- Living on ground & first floors
- Harbour and ocean views
- Highly desirable location

Check QR Code for viewing options



Colin Thompson

M 021 723 723

View Listing whanga.co/8512



Desired Harbour Location

104 Moana Avenue, Whangamata

3 2 2

- Open plan living with sarked ceilings and water views
- North facing decks with direct access from lounge
- Low maintenance landscaped site with mature planting
- Easy access to harbour reserve walks, marina and town

Check QR Code for viewing options



Colin Thompson

M 021 723 723

View Listing whanga.co/8544





Whangamata Real Estate

WHANGAMATA REAL ESTATE 2024 LTD (LICENSED REAA 2008)

Don't just dream it, live it



First Home Buyers \$849,000
104A Casement Road
2 1 1 whanga.co/8517



Onemana Hideaway \$895,000
338 Onemana Drive
3 2 whanga.co/8446



Easy Living \$955,000
135 Everitt Crescent
3 2 2 whanga.co/8547



Lifestyle & Location \$1.050M
201 Ocean Road
3 2 1 whanga.co/8464



Must See \$1.175M
109 Te Tutu Street
3+ 2 2 whanga.co/8525



Views & Location \$2.195M
611 Beach Road
3 1 1 whanga.co/8511



Surfside EO \$2.195M
106 Saint Patricks Row
3 2 2 whanga.co/8310



Low Maintenance By Neg
105 Everitt Crescent
2 2 1 whanga.co/8553



Tropical Escape By Neg
324B Mary Road
4 3 2 whanga.co/8496



Harbour Views By Neg
623B Harbour View Road
4 2 2 whanga.co/8490



Premium Apartment By Neg
4/111 Hunt Road
3 2 3 whanga.co/8440



Elevated Style By Neg
107 Pacific View Drive
3 2 2 whanga.co/8567



Prime Location \$699,000
2E/105 Aickin Road
3 1 2 whanga.co/8575



Walk to Estuary EO \$799,000
115A Papanui Road
2 1 1 whanga.co/8588



Easy Living \$825,000
115B Papanui Road
2 1 1 whanga.co/8589



Harbour Views \$1,150,000
131 Durrant Drive
3 2 2 whanga.co/8576

Chris & Katie Speedy Local Experts, Proven Results

Check out our listings above and below!



Thinking of selling?
We'd love to help!
Proven local results with
31 sales in 2025!

Phone Chris 021747901 | Katie 021382022



CLASSIFIEDS

PUBLIC NOTICES

Katikati U3A,
sub branch U3A Tauranga

GENERAL MONTHLY MEETING
Wednesday, 11 February, 10am-12pm

at The Hub, adjacent to the Katikati Library.
\$3 admission.
Speaker: Wymond Symes, Waihi Land Search & Rescue.
All welcome.

This Sunday 25th January, join us at
Williamson Park Markets

from 9am-2pm for a day of local shopping,
delicious treats, and community vibes!

From handmade gifts and unique art to fresh produce and tasty bites,
our local stall holders have something for everyone. It's the perfect
opportunity to support small businesses while finding something
special for yourself, friends, or family.

Facebook event page link - www.facebook.com/share/17oux5KHgF/
Instagram link - www.instagram.com/thelittlebigmarkets/

We can't wait to see you there!



Key Dates 2026

- Teacher Only Days - Thursday 29th & Friday 30th January
- First Day of Term - Monday 2nd February
- Waitangi Day - Friday 6th February - School Closed
- Last Day of Term - Thursday 2nd April
- Good Friday - Friday 3rd April

Phone: 078659077
Email: office@opoutereschool.com
www.opoutereschool.net



All Saints Anglican
at Cornerstone
Whangamatā

Our church service is
9.00am every Sunday
All welcome

All Saints Anglican at Cornerstone
101 Ocean Rd, Whangamata

Whangamatā Tides 2025/2026

JANUARY 2026										
☾ New Moon: 19 th ☀ Full Moon: 3 rd										
Date		High tide	Height (m)	High tide	Height (m)	Low tide	Height (m)	Low tide	Height (m)	Sun rise
		AM		PM		AM		PM		Sun set
23	Fri	11:11	1.9	23:27	1.8	4:45	0.3	17:18	0.4	06:19
24	Sat			11:54	1.9	5:29	0.3	18:03	0.3	06:20
25	Sun	0:12	1.8	12:38	1.9	6:15	0.4	18:49	0.3	06:21
26	Mon	1:01	1.8	13:25	1.9	7:05	0.4	19:39	0.3	06:22
27	Tue	1:54	1.8	14:16	1.9	7:59	0.4	20:33	0.3	06:23
28	Wed	2:53	1.8	15:13	1.8	8:58	0.5	21:31	0.3	06:24
29	Thu	3:57	1.8	16:15	1.8	10:01	0.5	22:32	0.3	06:25
30	Fri	5:03	1.8	17:20	1.8	11:07	0.5	23:35	0.3	06:26
31	Sat	6:07	1.9	18:25	1.8			12:11	0.5	06:28

FEBRUARY 2026										
☾ New Moon: 18 th ☀ Full Moon: 2 nd										
Date		High tide	Height (m)	High tide	Height (m)	Low tide	Height (m)	Low tide	Height (m)	Sun rise
		AM		PM		AM		PM		Sun set
1	Sun	7:08	1.9	19:27	1.9	0:37	0.3	13:13	0.4	06:29
2	Mon	8:04	2.0	20:24	1.9	1:34	0.2	14:11	0.4	06:30
3	Tue	8:56	2.0	21:18	1.9	2:28	0.2	15:04	0.3	06:31
4	Wed	9:46	2.0	22:07	1.9	3:19	0.2	15:54	0.3	06:32
5	Thu	10:32	2.0	22:54	1.9	4:07	0.2	16:41	0.3	06:33
6	Fri	11:17	2.0	23:39	1.9	4:53	0.3	17:26	0.3	06:34
7	Sat		1.9	11:59	1.9	5:38	0.4	18:09	0.4	06:36
8	Sun	0:23	1.8	12:41	1.9	6:23	0.4	18:52	0.4	06:37
9	Mon	1:08	1.8	13:23	1.8	7:08	0.5	19:35	0.5	06:38
10	Tue	1:55	1.7	14:06	1.7	7:54	0.6	20:21	0.5	06:39
11	Wed	2:45	1.7	14:53	1.7	8:44	0.6	21:10	0.6	06:40
12	Thu	3:39	1.6	15:44	1.6	9:38	0.7	22:02	0.6	06:41
13	Fri	4:35	1.6	16:38	1.6	10:33	0.7	22:57	0.6	06:42
14	Sat	5:30	1.7	17:34	1.6	11:29	0.7		0.7	06:43
15	Sun	6:22	1.7	18:28	1.7	11:50	0.6	12:21	0.7	06:44
16	Mon	7:10	1.7	19:19	1.7	0:40	0.5	13:10	0.6	06:46
17	Tue	7:55	1.8	20:07	1.8	1:26	0.5	13:57	0.5	06:47
18	Wed	8:38	1.9	20:52	1.8	2:11	0.4	14:41	0.5	06:48
19	Thu	9:20	1.9	21:37	1.9	2:54	0.4	15:25	0.4	06:49
20	Fri	10:03	2.0	22:21	1.9	3:38	0.3	16:09	0.3	06:50
21	Sat	10:46	2.0	23:07	1.9	4:23	0.3	16:54	0.3	06:51
22	Sun	11:31	2.0			5:09	0.3	17:40	0.3	06:52
23	Mon	11:54	1.9	12:17	2.0	5:58	0.3	18:28	0.3	06:53
24	Tue	0:45	1.9	13:07	1.9	6:49	0.4	19:18	0.3	06:54
25	Wed	1:39	1.9	14:00	1.9	7:44	0.5	20:13	0.3	06:55

Waihi Beach Tides 2025/2026

JANUARY 2026										
☾ New Moon: 19 th ☀ Full Moon: 3 rd										
Date		High tide	Height (m)	High tide	Height (m)	Low tide	Height (m)	Low tide	Height (m)	Sun rise
		AM		PM		AM		PM		Sun set
23	Fri	11:06	1.9	23:22	1.8	4:40	0.3	17:13	0.4	06:19
24	Sat		1.9	11:49	1.9	5:24	0.3	17:58	0.3	06:20
25	Sun	0:07	1.8	12:33	1.9	6:10	0.4	18:44	0.3	06:21
26	Mon	0:56	1.8	13:20	1.9	7:00	0.4	19:34	0.3	06:22
27	Tue	1:49	1.8	14:11	1.9	7:54	0.4	20:28	0.3	06:23
28	Wed	2:48	1.8	15:08	1.8	8:53	0.5	21:26	0.3	06:24
29	Thu	3:52	1.8	16:10	1.8	9:56	0.5	22:27	0.3	06:25
30	Fri	4:58	1.8	17:15	1.8	11:02	0.5	23:30	0.3	06:26
31	Sat	6:02	1.9	18:20	1.8			12:06	0.5	06:28

FEBRUARY 2026										
☾ New Moon: 18 th ☀ Full Moon: 2 nd										
Date		High tide	Height (m)	High tide	Height (m)	Low tide	Height (m)	Low tide	Height (m)	Sun rise
		AM		PM		AM		PM		Sun set
1	Sun	7:08	1.9	19:27	1.9	0:37	0.3	13:13	0.4	06:29
2	Mon	8:04	2.0	20:24	1.9	1:34	0.2	14:11	0.4	06:30
3	Tue	8:56	2.0	21:18	1.9	2:28	0.2	15:04	0.3	06:31
4	Wed	9:46	2.0	22:07	1.9	3:19	0.2	15:54	0.3	06:32
5	Thu	10:32	2.0	22:54	1.9	4:07	0.2	16:41	0.3	06:33
6	Fri	11:17	2.0	23:39	1.9	4:53	0.3	17:26	0.3	06:34
7	Sat		1.9	11:59	1.9	5:38	0.4	18:09	0.4	06:36
8	Sun	0:23	1.8	12:41	1.9	6:23	0.4	18:52	0.4	06:37
9	Mon	1:08	1.8	13:23	1.8	7:08	0.5	19:35	0.5	06:38
10	Tue	1:55	1.7	14:06	1.7	7:54	0.6	20:21	0.5	06:39
11	Wed	2:45	1.7	14:53	1.7	8:44	0.6	21:10	0.6	06:40
12	Thu	3:39	1.6	15:44	1.6	9:38	0.7	22:02	0.6	06:41
13	Fri	4:35	1.6	16:38	1.6	10:33	0.7	22:57	0.6	06:42
14	Sat	5:30	1.7	17:34	1.6	11:29	0.7		0.7	06:43
15	Sun	6:22	1.7	18:28	1.7	11:50	0.6	12:21	0.7	06:44
16	Mon	7:10	1.7	19:19	1.7	0:40	0.5	13:10	0.6	06:46
17	Tue	7:55	1.8	20:07	1.8	1:26	0.5	13:57	0.5	06:47
18	Wed	8:38	1.9	20:52	1.8	2:11	0.4	14:41	0.5	06:48
19	Thu	9:20	1.9	21:37	1.9	2:54	0.4	15:25	0.4	06:49
20	Fri	10:03	2.0	22:21	1.9	3:38	0.3	16:09	0.3	06:50
21	Sat	10:46	2.0	23:07	1.9	4:23	0.3	16:54	0.3	06:51
22	Sun	11:31	2.0			5:09	0.3	17:40	0.3	06:52
23	Mon	11:54	1.9	12:17	2.0	5:58	0.3	18:28	0.3	06:53
24	Tue	0:45	1.9	13:07	1.9	6:49	0.4	19:18	0.3	06:54
25	Wed	1:39	1.9	14:00	1.9	7:44	0.5	20:13	0.3	06:55

Only the best WAIHI TRADIES will do!

Use Locals... For Locals... Support Locals!

OP SHOP

WAIHI ST JOHN OP SHOP
Recruiting Now!



Make a difference

IN THE WAIHI COMMUNITY

Are you a Customer Service Superstar? Magic Merchandiser? Keen Handyman?

We are currently recruiting for a variety of roles across various departments in our Waihi Op Shop.

If you're keen to volunteer, pop in and ask to see Store Manager Sam for a chat, or call her on 07 863 9274 to find out more!

3 Silvertown Road Waihi

VETERINARY SERVICES




WAIHI 07 863 8684
WAIHI BEACH 07 863 7387

TYRE SERVICES

Gold Valley TYRES

- Tyre Sales • Mag Wheel Sales
- Fitting & Balancing • Laser Wheel Alignment
- Motorcycle & Truck Balancing

ph: (07) 863 8555 32 Kenny Street
m: 027 303 1428 Waihi 3610
e: goldvalleytyres@gmail.com

PLUMBER



- Certifying Plumbers and Drainlayers
- CCTV Drainage Inspections & Drain Unblocking
- Plumbing Maintenance & New Builds
- Gasfitting & servicing
- All Hot Water Cylinder Repairs and Replacements

For all your plumbing and drain laying needs.
Contact David Anderson 021927405 Waihi
0211996236 Tairua/Pauanui • office@inchitplumbing.nz

FLOORING

Owens Flooring

Flooring Sales and Installation
FREE MEASURE & QUOTATION

Carpet, Vinyl, Wood & Laminate Flooring
SHOWROOM: 5/57 Wilson Road, Waihi Beach
Open 8.30am-4.00pm Monday to Friday
Saturdays by Appointment

Phone: 027 233 7277 | 07 863 5723
sales@owensflooring.co.nz owensflooring.co.nz

CHILDREN'S CLOTHING & ALTERATIONS



Made with love by a Nanna.
Every girl deserves something pretty to wear and love.

Sizes from 0-3 months to 10 years. A range of boys clothes is also available. Bigger sizes available by request.

Handmade baby and children's clothes using good quality fabrics. Baby knitwear using NZ merino wool is also available. I have a range of ready to buy & also do a lot of custom-mades. I have a wide range of fabrics to choose from.

Shop at 110 Savage Rd, Waihi 3610 / Phone 021 892 248
Email nannaslittlepretties@gmail.com

I also do repairs and alterations - hemming, shortening skirts dresses, taking in dresses etc - minor bridal work.



RENTAL PROPERTY MANAGER

PGG Wrightson Real Estate

FRIENDLY. LOCAL. RELIABLE.
RENTAL PROPERTY MANAGER - WAIHI

Call today! **Julie Cunningham**
027 549 2427

pggwre.co.nz | PGG Wrightson Real Estate Limited, licensed under the REAA 2008.

PLASTERER

PLASTERER
FIX+STOP

PATCHES, repairs, new builds, skim, renovations, coving, wallpaper removal.
Ph or txt 022-4266-151.

ARBORIST & FIREWOOD

SHORT BACK 'N' SIDES LTD
Arboricultural Contractors

TREE PROBLEMS?
Dismantle, pruning, removal, stump grinding. BIG or SMALL - we do them ALL!
0274 390 367
www.shortbacknsides.co.nz

FIREWOOD
Available all year round. Smoking chunks or dust, kindling, bagged wood. Delivery available or pick up on Fridays from 15 Dean Cres, Waihi. Gold Card discounts. Also 100s of native and exotic milled slab timber, garden mulch, smoking wood.
0274 390 367 or our firewood hotline 022 043 1862



HOUSEHOLD GOODS



The HUB Waihi
NEW PREMISES
7b Dean Cres, Waihi
Ph 0204 086 2746

- Pre-loved furniture • Collectables
- Decor • Estate clearances

NEW ITEMS DAILY
Open WEDNESDAY to SUNDAY 10am-6pm

ARBORIST



- Professional experienced and insured arborist
- All tree work including removal / pruning
- Hedge trimming and property maintenance
- Quality firewood and smoker wood

Heath van Leeuwen 0210 838 9922
email Heathsvan@gmail.com

TYRE SERVICES

GOODYEAR AUTOCARE

Car, 4WD, truck, bus & tractor tyres
Tyre repair - Lease vehicles,
Wheel alignments & Mechanical,
All brands of tyres

Waihi Tyre Services
48 Rosemont Road, Waihi
07 863 7508 • waihityres@gmail.com

Only the BEST TRADIES will do!

Use Locals... For Locals... Support Locals!

SMALL ENGINE REPAIRS

ANTS REPAIRS

Whangamata-based small engine repairs & maintenance

- Chainsaws • Lawnmowers
- Ride ons • Weedeaters

Anthony Law
121 Sharyn Pl • 021 0244 2791
ants.repairs.nz@gmail.com

ARBORIST

Professional tree services in your backyard.

Tree shaping, view restoration, felling and removals, fruit trees and hedges, consultations... we do it all!

TREE SERVICES - COROMANDEL-WIDE

Free quote - call Jon Roest

021 405 555
arborcuts.co.nz

ArborCuts
 TREE SERVICES

LANDSCAPING

Beach Contractors
 & Landscape Supplies

LANDSCAPING SUPPLIES:

Bark, mulch, compost and topsoil | Sand, lime chip, river stones and pebbles | Cement, builder's mix and a range of metals

Delivery service available

Whangamata Yard
 2546 Waihi Whangamata Rd
 M. 027 261 1262

Waihi Beach Yard
 691 Waihi Beach Rd
 P. 07 863 5340

LAND DEVELOPMENT

Birch
 LAND DEVELOPMENT CONSULTANTS

Subdivisions
 Boundary Markings
 Land Use Consents Topographical Surveys
 Building Setout and Certifications

Contact us
0508 4 BIRCH
tairua@birch.nz
244 Main Road, Tairua
www.birch.nz

EARTHWORKS

Blackhill
 EARTHWORKS

- Bobcat & excavator
- Tight access work
- Site works
- Topsoiling
- Driveways
- Hole drilling
- Concrete prep
- Cartage

Shay 021 742 966 | www.blackhillearthworks.co.nz
info@blackhillearthworks.co.nz

IT SUPPORT



Boot it.

FIBRE INTERNET
 now available to order from **Boot I.T.**

We are the Coromandel's only local Fibre Internet Provider, and the ONLY provider that offers 7 days per week support.

Call us on **0800 242 266** to find out more.

PAINTER



TOTAL PAINTING SOLUTIONS

CALL LEE ON 0275 656 336
Lee.tpms@gmail.com

30 Years of Interior & Exterior Painting
Delivering High-Quality Service with Exceptional Results

CONCRETE

BROWN MORE CONSTRUCTION
 CONCRETE CONTRACTORS

Any Concrete Requirements: Slabs, driveways, patios, paths, etc
 All types of concrete - colour - finish
 Council Permits for Vehicle Crossings
 Excavation to finished product • Saw cutting & drilling

We take pride in doing a quality job at a competitive rate

REX: 027 285 5489

P. 07 863 3364 • office@brownmoreconstruction.co.nz

www.brownmoreconstruction.co.nz

PAINTER & DECORATOR

Gavin Johnson
 PAINTER & DECORATOR

Interior/Exterior Painting
 Wallpapering

Cedar Cleaning and
 Restoration Service

0224 552 363

brushstrokeswhangamata@gmail.com



DIGGER & CARTAGE

COAST DIGGER & CARTAGE

- Digger & Tip Truck Hire
- Driveways
- Building Digouts
- Site Works
- Concrete removal
- Track work
- Hole Drilling
- Tree Felling & Removal



Murray Clarke 027 2010 209
muzzclarke66@hotmail.com

PAINTER

Coastline
 Property Painters

Protecting your investment ■ Interior ■ Exterior ■ Roofs ■ Updates & photos as your job progresses

Call Richard Upton: 0274 884 881 / **www.coastlinepropertypainters.com**

OUTDOOR COVER

Covered.

- Louvres
- Privacy Panels
- Awnings
- Sails

LOUVRESYSTEMS

info@covered.co.nz 07 865 6207 or 027 497 1236

www.covered.co.nz 300 Casement Rd. Whangamata

CURTAINS / BLINDS

Curtains and Blinds and More
 Whangamatā

LOCALLY OWNED AND OPERATED

- Curtains
- Venetian Blinds
- Roller Blinds
- Romans Blinds
- Shutters
- Honeycomb Blinds

100% Mobile Service

We come to you, Free Measure and Quote

Call Louise or Gavin
on 027 4777 916

or email **info@curtainsandblinds.co.nz**

FRAMING



- Picture framing
- Framed mirrors
- Art installation
- Pick up & delivery

Ade Cunningham

M. 0274 929 695 or P. 07 575 9149

info@framesnz.co.nz • **www.framesnz.co.nz**
 300 Port Rd (corner of Ajax Rd), Whangamata

GRAPHIC DESIGN

For your graphic design needs

- Adverts ■ Signs ■ Flyers and more...

Contact Anna
aljgledhill@gmail.com

Graphic designer for **Whangamatā & Waihi News**
 & the **Repco Beach Hop** programme

Use Only the Best Services in our Community!

Use Locals... For Locals... Support Locals!

HANDYMAN

HANDYMAN

30 yrs experience, specialising in:

- Bathroom, deck & building repairs
- Gib fixing & plastering
- Interior /exterior painting

Please ring Rex on 021 997 428

BUILDING & LANDSCAPING

HBL HANSEN BUILDERZ BUILDING & LANDSCAPING

COMMITTED TO EXCELLENCE

Contact us to discuss your project & a free estimate today



ADRIAN 0274 263 895 | hansen.builderz@gmail.com | HBLHomesnz
Residential | Commercial | Alterations | Additions

ARCHITECTURAL BUILDERS

HOME & Lifestyle

- Architectural Builders
- Interior & Colour Design Services
- Project Management

For trusted expertise with your building project

Katrina Jackson 027 273 0685 | Leigh Goodman 027 4475 423
info@homeandlifestyle.co.nz

BUILDING WASHING

HOUSE WASHING

Exterior house or commercial building wash, roof wash, fences, driveway, patios – soft-wash for best moss and lichen clean and treatment, exterior window cleaning, or general water blasting, 100m of hose so access is no problem.

Prompt local service with 20 years' experience.

Ph 0800 747 787 email housewash@xtra.co.nz **or dial Andy direct on 027 313 4386**

CLEANING



we'll take care of it

- Carpet Cleaning
- Pest Control
- Flood & Fire Restoration
- Stain Removal
- Upholstery Cleaning



From Waihi to Whangamata
07 863 8358 or 0800 225 552
whangamata@jae.co.nz



AUTOMOTIVE & BOATS



BOAT TRAILERS, CARS, CLASSIC & HOT RODS

ONLY **Repco**
STOCKIST IN TOWN!

ONLY **HONDA**
AGENT IN TOWN!

Aickin Road, Whangamata (next to Bunnings)
P. 865 9073 | E. office@jcdcustoms.co.nz
Mon-Fri from 8am

HOME BUILDERS

Whatever the site, we'll help you
create the perfect home.

Jennian HOMES

614 Port Rd, Whangamata E: coromandel@jennian.co.nz P: 07 865 6767



TRAVEL BROKER



Kay Gregan
The Travel
Designer



AWARD-WINNING TAANZ BONDED TRAVEL BROKER
Travel Broker & CLIA Accredited Cruise Specialist
2025 Inaugural Brand USA Ambassador
Whangamata 07 865 9568 | M: 027 337 6222
Kay.Gregan@thetravelbrokers.co.nz
thetravelbrokers.co.nz/kaygregan

BUILDER

Keith the Builder LBP

Need something done?

For maintenance, decking,
fencing, repairs, interior
work and all enquiries

PHONE FOR FREE QUOTE
Keith phone 0272 262 039



ELECTRICAL

For All Your Electrical Needs



**Electrical
Laser**
"Totally Dependable"

**Now Open In A Second Location
Introducing Laser Electrical Waihi**

WAIHI 07 863 7746
waihi@laserelectrical.co.nz
40B Kenny Street

WHANGAMATA 07 865 9309
whangamata@laserelectrical.co.nz
100 Lindsay Road

DELIVERERS WANTED

DELIVERERS WANTED IN WHANGAMATA

GET PAID TO GO FOR A WALK

Hottest delivery rate in town, \$20 per route at rate.

One delivery per fortnight with a 2-3 day window to deliver.

Most routes take approximately 1 hour.



**Whangamata
& Waihi NEWS**

Contact Jennie Black 021 0232 1661 or email whangamatanews@gmail.com

Only the BEST TRADIES will do!

Use Locals... For Locals... Support Locals!

LOUVRES

Engineered for Life

LouvreTec®

OPENING & RETRACT ROOFS
SUN LOUVRES / SHUTTERS

07 574 6040 office@louvretec.com
www.louvretec.co.nz

free no obligation quote & site visit

KITCHENS

McBeth Rd Orchard Joinery

Affordable joinery

Kitchens new or upgraded
Laundries & bathrooms
Wardrobes & storage units
Free estimates

Tony & Nicky Ball - 027 229 2255
Whangamata

BUTCHER

MEAT AT THE BEACH

Come into the local butcher and find:
BBQ meat, in store made sausages, patties,
tasty chops, steaks, butterflied chickens & much more.
'The home of Whanga bacon & Whanga Black Pudding'

601 PORT ROAD, WHANGAMATA P. 07 865 7241
MON-FRI 8.30AM-5PM • SAT 8.30AM-3PM

BARBER



027 577 0666 Shop 3, 701 Port Road, Whangamata

✉ cutsbysaminz@gmail.com
f @paradise_coast_barbers

PHOTOGRAPHER

Pete Stretch
PHOTOGRAPHY

Family • Weddings • Corporate
027 458 1179
peterstretchphotography@gmail.com

PODIATRY

Pedicare Services

Professional Foot Care

Alison Walkington
Registered Nurse

Home visits by appointment

Mobile 027 663 2320 or
email alison.c.walkington@gmail.com

ELECTRICIAN

PITCHER ELECTRICAL



YOUR TRUSTED
MASTER ELECTRICIAN
working in Whangamata,
Opoutere, Onemana and
Whiritoa

**RESIDENTIAL AND
COMMERCIAL SERVICES**

TONY PITCHER 0274 589 573

PEST CONTROL



Professional Pest Management

Say goodbye to unwanted pests -
spiders, ants, wasps, cockroaches,
rodents & more!

We offer a safe, effective pest
management solution tailored to suit
your needs.

Contact us today for a pest-free home
or business. Locally owned & operated.

STEPHANIE FRITH - QUALIFIED TECHNICIAN
pestpros@outlook.co.nz | 027 3211 796 | www.pestpros.co.nz
Whangamata & Surrounds
A member of Pest Management Association of New Zealand

WINDOW CLEANING



Your ecofriendly
window
cleaning
service.

Mike Horton
info@purenclean.co.nz

M 021 501 324
www.purenclean.co.nz

HEAT PUMPS

Reef REFRIGERATION & AIR CONDITIONING LTD

We Sell and Service all Major Brands

Your heat pump specialist
On site marine & commercial refrigeration

Call today for a hassle-free quote
027 933 8599
www.reefrefrigeration.co.nz

ROOFING



RIKKI ROOFING
we aim for the roof shout

Rikki Daysh, Owner/Operator
022 408 8424
rikkisroofing@gmail.com

- ▶ Residential re roofs & new roofs
- ▶ Spouting
- ▶ Cladding
- ▶ Maintenance & re screws

PLUMBER

Russell CHOAT
GAS & Plumbing
Whangamata

FOR ALL YOUR GAS-FITTING, PLUMBING,
DRAINAGE & ROOFING REQUIREMENTS

Registered craftsman & member
of Master Plumbers

M. 0274 714 869 E. office@choatsplumbing.co.nz

ELECTRICIAN / DOG GROOMER



Rusty Sparks

EVERYTHING
ELECTRICAL

Residential, Commercial,
Data, Alarms

☎ 021 800 017
admin@rustysparks.nz



**PIMPED PUPS
GROOM ROOM**

☎ 021 850 017
WHANGAMATA

BUILDER



**RESIDENTIAL
SERVICES**

LBP Builder / Renovation Specialist

07 865 6555 / 027 238 1659
skfrs@xtra.co.nz

Use Only the Best Services in our Community!

Use Locals... For Locals... Support Locals!

WINDSCREEN REPAIRS

secureglass

For all your
windscreen
needs!

021 617 664
secureglassltd.co.nz



MONDAYS:
RSA car park, Whangamata

TUESDAYS:
Fresh Choice car park, Waihi

THURSDAYS:
Tairua Community Hall, Tairua

FRIDAYS:
Goldfields car park, Thames

BINS

**Skip Bins, Wheelie Bins,
Front Load Bins**

Contact us today!

*We can
help!*



smart
environmental

0800 4 MY BIN - www.smartbins.co.nz

Proudly 100% Kiwi owned

BOARDING KENNEL / CATTERY

SPOT X
BOARDING KENNELS
AND CATTERY

Quality care and facilities in a rural setting
Office hours: 9am-12 noon and 3-5pm daily
INSPECTION WELCOME
Ph 07 865 8242 or 027 624 3890
Annette Gillatt
4km south of Whangamata on the main road

FIREWOOD

SUMMER SALE

WINTER 2025 BURNING
SEASONED PINE 2m³ \$200
SEASONED GUM 2m³ \$300
SEASONED PINE & GUM MIX 2m³ \$250

*Minimum 2m³ orders. Order 6m³ or more and get a further \$60 discount
(to qualify for the discount the 6m³ must be delivered in one drop off).
All our wood has been seasoned for a minimum of 12-18 months in log form,
not freshly cut down, and double screened to ensure a clean product.*

PH/TXT 0272841811 • WWW.STEVESFIREWOODSUPPLIES.CO.NZ



REFRIGERATION & AIR CON

**TIDELINE
REFRIGERATION**
WHANGAMATA

- * HEAT PUMPS
- * REFRIGERATION
- * AIR CONDITIONING
- * VENTILATION

SERVICING IN THE COROMANDEL AREA
0272121994 - 0277251820
TIDELINEREFRIGERATION@GMAIL.COM
WWW.TIDELINEREFRIGERATION.COM

TREE SPECIALIST

- Tree felling & pruning
- Hedge trimming
- Stump grinding
- Fully insured
- Qualified arborist

TREECARE WHANGAMATA LTD
Contact 022 648 8150
treecarewhangamata@gmail.com

LAWYERS

**USSHER
LAWYERS**

We can help with all of your general legal needs

- Conveyancing if you are buying or selling property
- Sale and purchase of business assets • Commercial leasing
- Relationship property • Trusts • Wills • Enduring powers of attorney

www.ussherlawyers.co.nz | Phone **07 865 8824**
We've moved - now at **123 Lindsay Rd, Whangamata**

WARDROBES

**WD WARDROBES
DIRECT**

Steve Parkinson
Central, East & South
021 0733 100
steve@wardrobesdirect.co.nz
**ALSO SERVICING
WHANGAMATA**
www.wardrobesdirect.co.nz

Showroom
and office:
175 Marua Rd
Mt Wellington

LAUNDRY

WHANGA LAUNDROMAT

"The only locally owned & operated laundromat in town!"
OPEN 24 HOURS - 7 DAYS A WEEK
CASEMENT RD, WHANGAMATA (OPPOSITE WAITOMO FUEL)

SCAFFOLDING

**WHANGAMATA
SCAFFOLDING**

- Mobile scaffolding
- Roof edge protection
- Construction scaffold

Servicing Whangamata
and surrounding areas

Please ring **022 076 0160** or
email **whangamatascaffolding@gmail.com**
102 Lindsay Road, Whangamata Est 2014

TYRE & BATTERY SERVICES

**WHANGAMATA
TYRE & BATTERY**

Car tyres / Wheel alignment
4WD tyres / Tyre repair
Wheel balance
Small implement tyres
Batteries - car & marine

KUMHOTYRES 7
Phone Simon
865 7698

CHALLENGE Cnr Port & Ocean Rd,
Whangamata
www.challenge.net.nz

WINDOW & DOOR SERVICES

**WHANGAMATA
WINDOW & DOOR
SERVICES**

Bryce Hall
M. 027 282 2057
Ph. 865 9714

Reglaze Repairs Maintenance
Retro Fit Double Glaze

whangamatawindowdoorservices@extra.co.nz

HOME SERVICES

YourLocal
NZ's Trusted Home Services

Avi@yourlocal.nz • www.yourlocal.nz • 022 534 5478

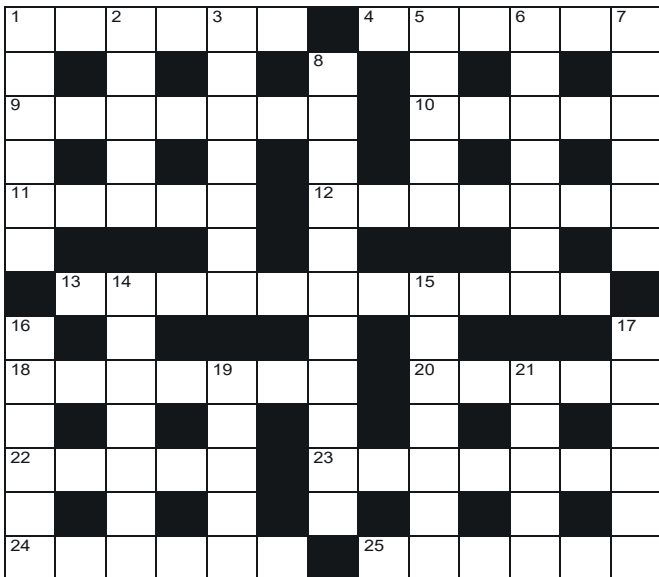
We specialise in

- Exterior house wash, windows, driveways, patios, decks,
fences & roofs • Commercial, residential, rural, new builds
& painters prep • Pests treatment (fumigation)
- Rodents & wasps • Chimney sweeping • Roof treatments

BUSINESS FRANCHISE FOR SALE

We cover Coromandel, Thames, Waihi, Waihi Beach, Whitianga, Whangamata

QUICK CROSSWORD



Across

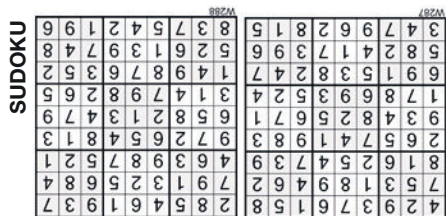
1. Strongly dislike (6)
4. Compels (6)
9. Crown jewels (7)
10. Lariat (5)
11. Additional (5)
12. Ghost (7)
13. Sneaky (11)
18. Disturb, make uneasy (7)
20. Skinflint (5)
22. Cache (5)
23. Put right (7)
24. Hypothesis (6)
25. Quick look (6)

Down

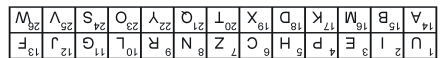
1. Window set in roof (6)
2. Stretched (5)
3. Rescue (7)
5. Imperial unit of weight (5)
6. Laugh (7)
7. Pierce (6)
8. Shift blame (4,3,4)
14. Tell a story (7)
15. Digit (7)
16. Outcome (6)
17. Twist in agony (6)
19. Beneath (5)
21. Strict or severe (5)

All puzzles © The Puzzle Company

SOLUTIONS



DECODER



CRYPTIC

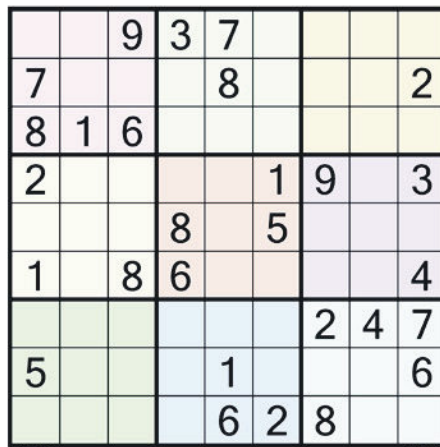
- Across: 1. Longbow, 5. Dado, 8. Moral, 9. Toenail, 10. Initially, 11. Baker, 12. Stored, 15. Air strike, 18. Beanbag, 19. Ozone, 20. Elsie, 21. Taluses, 24. Theory, 25. Gance.
- Down: 1. Limbo, 2. Norfolk, 3. Billiard table, 4. Within, 5. Dyed in the Wool, 6. Drawl, 7. Splayed, 11. Bramble, 13. Reasons, 14. Fidget, 16. Reams, 17. Bless.

CROSSWORD

- Across: 1. Detest, 4. Forces, 9. Regalia, 10. Noose, 11. Extra, 12. Spectre, 13. Underhanded, 18. Perturb, 20. Miser, 22. Hoard, 23. Correct, 24. Theory, 25. Gance.
- Down: 1. Dormer, 2. Tight, 3. Salvage, 5. Ounce, 6. Chortle, 7. Skewer, 8. Pass the buck, 14. Narrate, 15. Numeral, 16. Upshot, 17. Withe, 19. Under, 21. Stern.

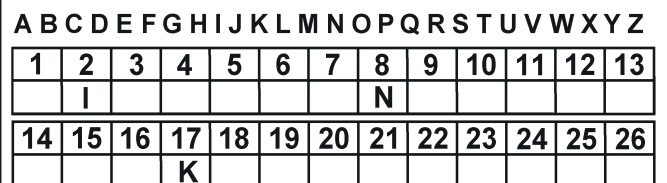
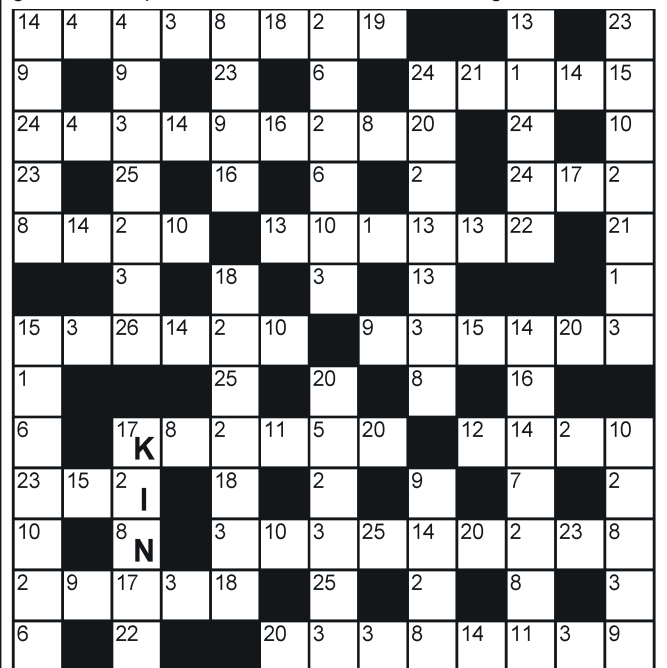
Fill the grid so every row, column and 3x3 box contains the numbers 1-9

SUDOKU



DECODER

Each number below represents a different letter. Find the correct letter for each number by working out the word from the letters given. To keep track, cross the letters off on the grid below.



CRYPTIC CROSSWORD

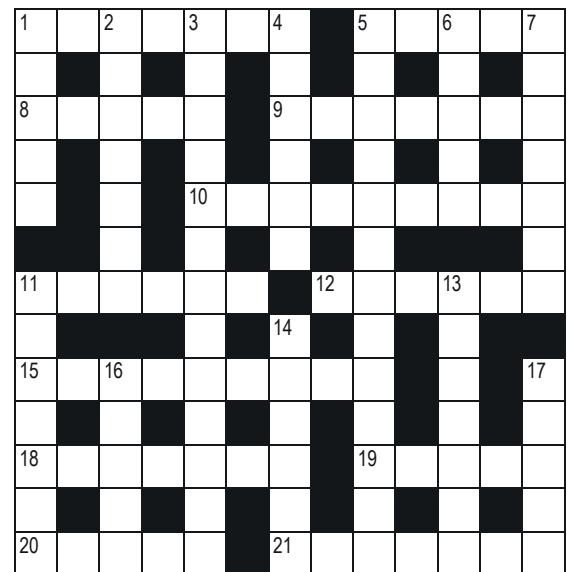
Across

1. Weapon used by a tall double bass player? (7)
5. You may find them around in the room (5)
8. Dig out marigold – this could be the lesson ... (5)
9. ... cut off a foot (7)
10. Lily, Tina & I could be at first (9)
11. Where you will get a daily rise (6)
12. Sorted out and put away (6)
15. An attack by planes grounded? (3,6)
18. Yet it's not full of vegetables (7)
19. A surprising, we hear, atmospheric area (5)
20. She comes from Pepel, Sierra Leone (5)

21. A tussle around sloping masses of rock at the base of a cliff (7)

Down

1. Hanging in there and try to go under Rod (5)
2. Island county (7)
3. You may end up pocketing the kitty here (8,5)
4. Lets out tin whistle from the inside (6)
5. Woodenly hit Ed through and through (4,2,3,4)
6. Sketch student may speak slower (5)
7. Sped about place with a funny leg (7)
11. What the British stroll in? – Not likely! (7)
13. Explains the causes (7)



14. He is gifted perhaps but nervous (6)
16. Bores a hole in 500 sheets (5)
17. Nose out nobles to sanctify (5)

DUMPLING TUESDAY

\$1 DUMPLINGS ALL DAY

WEDNESDAY

\$1 BUFFALO WINGS

FROM 4:30PM UNTIL SOLD OUT

PASTA THURSDAY

PASTA & A BEVVY FOR \$24

FRIDAY SHOUT

10 DOLLA HOLLA DAY

2:30PM-5:30PM

SHELLFISH SATURDAY

1KG OF MUSSELS & A BEVVY FOR \$25

GIVE A SCHNIT SUNDAY

SCHNITTY & A BEVVY FOR \$20

\$1 WINGS WEDNESDAY



Dine in only

conditions apply

PASTA THURSDAY



choose one of our pastas and grab a pint off tap or glass of haus wine for only \$24.00

manager@crafthauswhanga.co.nz

Shellfish SATURDAY



Grab 1kg of NZ greenlipped mussels in a Thai curry sauce w garlic bread + a pint of tap beer or glass of house wine

CONDITIONS APPLY

GIVE A SCHNIT SUNDAY

Choose from chicken or pork schnitzel, slaw, gravy, fries & a bevv for only \$20.00

BOOK YOUR TABLE NOW



Live Music w Mark & Trace

in the garden last Sunday of every month!
■ 5pm - 8pm
■ Jan 25th

NOTE: We are CLOSED MONDAYS FROM NOW ON! Book your table at manager@crafthauswhanga.co.nz

CRAFT HAUS

Gastropub Est. 2022

711 Port Road, Whangamata

@crafthauswhanga - www.crafthauswhanga.co.nz

07 865 6300