

PARADISE COAST

Whangamatā NEWS

ISSUE 112 – 23 FEBRUARY, 2024



Northern regionals - medals for all

127 RACES AT WHANGAMATĀ – PAGE 11

Pictured is Misha Petherbridge. Photos by Mark James.

FREE COPY
PLEASE TAKE ONE!



BY LOCALS, FOR LOCALS, ABOUT LOCALS.

LIKE US!

WE WELCOME YOUR CONTRIBUTIONS!
EMAIL WHANGAMATANNEWS@GMAIL.COM • FACEBOOK [@WHANGANNEWS](https://www.facebook.com/WHANGANNEWS)

SEE ALL OUR EDITIONS LIVE AT WWW.WHANGAMATANNEWS.NZ
EDITORIAL & MEDIA SALES:
JENNIE BLACK – 021 0232 1661

DELIVERED TO WAIHI, WHIRITOA, WHANGAMATĀ, ONEMANA, HIKUAI, PAUANUI & TAIRUA



Dumping a load of sh** proves a challenge

Everyone loves Whangamatā. Throughout the year, thousands of people arrive in campervans and motorhomes to enjoy the attractions the area has to offer.

Once upon a year or two ago, my husband Peter and I lived in Whangamatā, but when the family home sold and Peter was offered work in the South Island, off we went in our campervan, looking for adventure in our own country.

Ours is a 2021 camper with all the bells and whistles, including a cassette toilet and a separate shower. Now, just to let you know, (although it's a bit of a delicate topic) a toilet cassette for two of us requires emptying roughly every three days...

When we came back to Whanga in August we were kindly hosted by Whangamata RSA for a couple of days.

When the red line on the cassette monitor showed, and knowing the dump station was in Martyn Road, off we rumbled to 'do a dump'.

It was closed - padlocked with a roughly handwritten CLOSED sign on it. Ye gods! Fortunately we had a spare cassette which saved the day.

A phone call to TCDC elicited a lukewarm response. The person I spoke to had no idea why it was closed and suggested we go to

Tairua - 35 km away - or Waihi, about 30km.

We were staying with friends and had no desire to travel in either direction. Days later we headed back to stay with our friends in Piopio.

Now it's October and we're BACK in Whangamatā!! Yay!!

The time came for another offload - but the dump station was CLOSED AGAIN!

New toilets were being installed right next to it but I thought I'd ring TCDC again to find out what was happening.

After a short time on 'hold' I was told the council was waiting for a part and they hoped the hole in the ground would be operational by Labour Weekend. I could go to the Whangamata Campground or to Opoutere camp - 'but you'll have to pay'.

Footnote: We checked the dump station the following day (Friday October 14) and it was OPEN!!!

Well done TCDC - but I suspect as there are more than 100,000 members of the New Zealand Motor Caravan Association (NZMCA) as well as thousands of tourists back on our roads in campers, quite a few were inconvenienced by the closures.

- Lesley Staniland (her last submission)

'Number eight' Kiwi ingenuity

Thank you Paula Bennett (NZ Herald 11/2/24) for highlighting that our traditional ingenuity and resourcefulness is being stifled by regulation. We have created for ourselves a world that is obsessed with liability. Nobody wants to risk being blamed for anything that may go awry.

While the welfare and care for our people is a worthy goal, Health and Safety has become an onerous beast that dominates boardrooms, workplaces and all manner of activity. Health and Safety plans, risk mitigation, hazard identification, etc,

have all grown in complexity and add an increasing burden of cost to society and the economy.

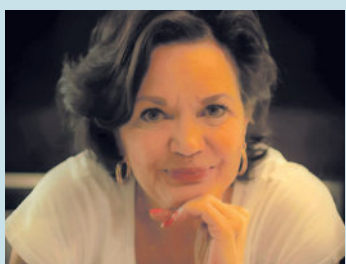
Health and Safety and, in particular, traffic management have become substantial and costly growth industries whose function is often widely disproportionate to the task at hand.

As Paula points out "you can't legislate for stupidity". Over-regulation is squeezing the life out of our once renowned common sense and innovation.

George Williams
WHANGAMATĀ

Welcome to the second February 2024 edition of Whangamatā News

- a magazine By Locals, For Locals, About Locals



For advertising queries contact Jennie Black

Editorial/Sales Director
Phone 021 0232 1661
jennieablack@gmail.com

We welcome your letters, articles, photos, news tips and advertising enquiries

- We ask that letters and articles be no more than 250 words, although exceptions can be made.
- Photos should be high resolution and in focus.
- Include your name, no noms de plumes.

For editorial or photographic matters, phone Jennie on 021 0232 1661 or email WhangamataNews@gmail.com

HON SCOTT SIMPSON

MP for Coromandel



Cyclone Recovery Ongoing

It's been a year since our region and other parts of New Zealand were devastated by severe weather events.

The damage done to roads, people's homes and property, transport networks, small businesses and to our daily lives has left a lasting mark on our communities.

Sometimes the worst of situations brings out the best in people and communities. There was a lot of that during last year's weather crisis turmoil. Looking back now, for me it is one of the most enduring memories as I saw so many examples of people, neighbours and communities working together to help each other out at a time of great need.

The recovery is still ongoing and I'm pleased the Coromandel has been included in the latest round of emergency relief funding from the coalition Government. The bulk of the funding is being allocated to stabilising parts of our

highway network where there is a potential for slips during future heavy weather events. We've also provided funding across the wider Hauraki and Thames-Coromandel districts for river management, removal of storm damaged trees, and replanting of willow and poplar poles. There's still work to do to, but twelve months on and we're in much better shape than we were.

I'm back at Parliament and we're in the middle of what is called a four week sitting session. It's relatively unusual for Parliament to sit for four consecutive weeks, but it's an indication of how much work that the coalition Government wants to get through to get the country back on track. After six years of massively wasteful spending and a lack of delivery it's good to be getting on with doing all the things we'd promised New Zealanders we'd do. We're working through our 100 day plan that is focused on delivering for all New Zealanders.

- Authorised by Scott Simpson MP,
614 Pollen St, Thames

Scott Simpson
MP for Coromandel

Contact me anytime

0800 550 330 • scottsimpson.co.nz
mpcoromandel@parliament.govt.nz
f scottsimpsonmp

National 
Authorised by Scott Simpson, Parliament Buildings, Wellington.



ROOFING

LOCALLY OWNED & OPERATED

For: **New roofing | Re-roofing**
Continuous spouting | Metal fascia
Downpipes

CALL US FOR YOUR FREE QUOTE

Geordie Walden: 022 396 4143
ccspouting@gmail.com | www.ccspouting.co.nz

Incident Support Vehicle updated



Our brigade has had a great Christmas break with a low number of calls. Trainings have commenced once again for the year with the focus on vegetation fires and operation of pumps due to the weather increasing risks throughout the district. Our plea again is that precautions are taken to prevent fires.

Your donations from our community over a long period have allowed us to update our incident support vehicle. The brigade owned Ute is to be used to transport additional equipment, personnel and provide scene safety at incidents.

Our team now is currently looking



into upgrading the kitchen facilities in the station. Large scale incidents and weather events will be supported more effectively with the proposed changes. Donations generated going forward will help fund this project.

Without your generous support such projects would not be possible. We are extremely grateful and proud to operate in such a thankful district.

Wishing you a safe week.

- CFO Nigel Airey

Operation Emerald



This week we executed a search warrant on an address just slightly out of town, north of Whangamatā, acting on information of the supply of illicit drugs. Over a period of time we have had many people asking when there will be action taken here. A fairly large cannabis plantation was also discovered. Enquiries are ongoing and we haven't finished yet. Thank you to those who have obliged and provided information to Police, your help has really made a difference to this community. Any further information can be provided in complete confidence and assured that your identity will be kept secret.

BEACH HOP

Our favourite time of year is nearly on us where we once again welcome our many visitors to town. There as usual is a 24 hour liquor ban in the Whangamatā area over this period. Pop on to the TCDC website to see the dates and times. Remember to tell your friends, family and visitors to avoid any unintentional breaches.



DON'T DELAY, CALL TODAY

Not a cheesy sales pitch. If you see something not right, don't wait to let us know, call 111 if it is happening now or just happened. Getting a few reports that happened 'a few days ago' or 'last week sometime' that if we had known about at the time could have made a huge difference or even caught a burglar.

- Sergeant Will Hamilton, Officer in Charge, Whangamata Police

Curtains and Blinds and More



Whangamatā and surrounds for:
 Curtains, Sheers, and Linings | Roman Blinds
 Sun-screen, Light-filter, and Blockout Roller Blinds
 Wood, PVC, and Aluminium Venetian Blinds
 Honeycomb Blinds | Shutters
 Motorisation and Automation



Locally owned and operated providing a complete in-home service from consultation to installation



Contact Louize or Gavin on
027 4777 916
 or email info@curtainsandblinds.co.nz





Carrano Dexter
 Available in 3 colours
 \$249 **\$199**



Tango's

Whitianga 07 866 4465 | Whangamatā 07 865 8088
WWW.TANGOSSHOES.NZ

AfterPay, Zip & Laybuy welcome.  

For all your print design needs

- ◆ Adverts
- ◆ Signs
- ◆ Business cards

- ◆ Menus
- ◆ Flyers
- ◆ Magazines

and more...

Contact
Anna Gledhill
aljgledhill@gmail.com
 or **021 653 148**

Designer for
Whangamatā News
 & **Repcos Beach**
Hop 24 magazine

Friend, community leader, free spirit & wordsmith bids farewell

Our dear friend, colleague, professional, renowned journalist and Editor, Lesley Staniland left us on 9 February, 2024.

As soon as I posted about her passing, over 100 tributes poured in, such incredible love, endearments, memories and notes of respect - and so deserved.

Lesley Staniland was born 22 May, 1950, in Tauranga. Her early days saw her family moving a lot, as her Dad was in the Air Force. She attended St Stephens in Marton briefly, Katikati Primary, Marton Junction School, Rangitikei College, and Whakatāne High School.

Her sister, Pam, tells us that Lesley really had no formal tertiary education. "Lesley did it all on her own!"

A rebellious teenager with a passion for aeroplanes and cars - cop-baiting the law in her Dad's Austin 7. In later years, we

called her 'lead-foot Les'.

An intrepid traveller to India, Bolivia twice, England and Nepal, she loved to see the real people and how they lived.

Her sister Sue tells us "her vibrancy, humour and sisterhood will be sorely missed".

Her career started with NAC as a travel agent. She then moved on to be a proofreader for *The Truth*, always a wordsmith.

Lesley had the drive to look ahead, keep going, in spite of adversities.

I met Lesley over 35 years ago while she was a reporter for the *Mount News*. She joined a small and intrepid team - they were tight-knit, like a family really. She also had many roles under the *Bay of Plenty Times* umbrella, with the *Te Puke Times*, a *Bay of Plenty Times* sub-editor, feature writer, photographer and reporter.

Following that, she became Editor of Whangamatā's *Coastal News*, and then, as only both of us knew we would, we created a local newspaper - much needed to be the 'Voice of Whanga'.

We knocked the first edition out in 10 days, it arrived 6.30am that 2019 morning and we both tore the bundles open to see our dream become a reality.

That was the beginning of a journey like no other...

Lesley was colourful in every way: her bright white short hair, zany tights, hot lipsticks, loads of silver jewellery and a colourful word or two!

Spectacular dress, shoe fashion, op shop hunter and a fabulous sense of humour. Always with a glass in hand, socialising, and enjoying the odd bet or two!

A collector of art, pottery, textiles, a weaver and spinner - she was generous in every way with time, friendship and money.



A beloved wife to Peter West, sister, Mum to Jamie and Charlie, Noni and Great Noni to her grandies and my best buddy - sorely and terribly missed by all of us.

"There are no goodbyes for us. Wherever you are, you will always be in my heart"
- Gandhi

- Jennie Black



EW Business Association speaker: Noddy Watts

This was Enterprise Whangamata's (EW) first BA5 of the year and the location was stunning - at the recently opened Edison's in the old movie theatre building.

Moved forward from the last Thursday of the month just in case it clashed with our hosts Laura and Andrew's pending baby arrival, it was an enthralling meeting as Noddy Watts, Repco Beach Hop 24 spokesman, outlined some of the plans for next month. As usual they were extensive and exciting, I suggest you pick up a copy of the Festival Programme on sale early March so you don't miss a thing.

The organisers have had a tough past four years with Covid affecting festivals 2020, 2021 and 2022 followed by the disaster of SH25a closing in January last year. Hopefully it's plain sailing through the build-up to Repco Beach Hop 24 which will kick off on Wednesday, 20 March.

The team has a well-proven format, however, they're always looking to create new additions to the festival which Noddy outlined.

HAIR is an iconic stage musical and movie from the late '60s, so they've created HAIR! at the Repco Garage (Summer Bar) on Wednesday 20 March. This is a

mullet, beard, moustache and '50s and '60s hairstyle (men and women) competition with great cash prizes up for grabs.

MC for the night is well known comedian Brendhan Lovegrove who'll be keeping the crowds entertained, plus Harley-Davidson are bringing their drag burnout bike to do a demonstration at 10:30pm.

Noddy also fittingly announced that EW has stepped up and offered \$500 to go towards the annual 'Top Shop' prize, so our local businesses are encouraged to dress their businesses and staff in '50s and '60s themes. The winner is chosen by the public so businesses need to register with the Beach Hop team who'll be visiting over the next couple of weeks.

The Repco Beach Hop Committee has also created a new incentive for local businesses to sell Repco Beach Hop 24 Festival Programmes. Any retailer business who sells at least three bundles of Programmes will go into the draw to win a \$250 Beach Hop Prize Pack.

At the conclusion of Noddy's presentation, he was approached by local businesses Palm Pacific Resort and Whangamata Cycles who've teamed up and offered a prize voucher of a weekend for two



in Whangamata, including the use of two e-bikes. Noddy was ecstatic and commented that it's exciting to see local businesses working together to support the festival.

The next event for EW is their Business Expo on Tuesday, 5 March and then on 19 April, one of New Zealand's top sports journalists and media personalities, Phil Gifford, will be speaking at the Rugby Club.

Whangamata Club

Join Us AT THE **WHANGAMATA CLUB**

IT'S TIME TO PARTY

MOSS WILL ROCK YOU

VOTED BEST COVERS BAND & VOCALS

SATURDAY MARCH 2ND
JOIN US FROM 6.30 PM
FOR ALL THE CLASSIC HITS

LET'S ROCK

SMOOTH & GROOVE PRODUCTIONS

THE BOYS

LIVE MUSIC

- * The Dudes
- * Six 60
- * Mark Williams
- * Herbs
- * Netherworld Dancing Toys
- * KC And The Sunshine Band
- * Hello Sailor
- * Dragon
- * D. D. Smash
- * Tim Finn
- * LAB
- * Kool And The Gang

* KIWI CLASSICS * REGGAE VIBES * PARTY HITS * OLD SCHOOL *

Saturday 9th March
7:00pm

V.A.C. Award Winners

Playing Hits From The 50's To Now

Toucan

duet better than one!

Ken Strong

Karen Davy

Whangamata Club
Saturday 16 March
from 6:30pm

OPEN DAILY FROM 11AM

BISTRO
Monday - Friday from 3pm
Saturday & Sunday from 12pm

DINNER MENU
From 5pm daily

RESTAURANT
Friday to Sunday from 5:30pm

404 PORT ROAD
FACEBOOK.COM/THEWHANGACLUB
WWW.WHANGAMATACLUB.CO.NZ
P. 07 865 8705

Wanted: Helicopter Pilots

Most people spend too much time in their business, not on their business.

On Tuesday, 5 March, here in Whangamatā you have the chance to hop in the helicopter and take a good long look at your business.

Whangamatā's Business Expo

- **IT:** is it up to the task; are you at risk of scams?
- **Finances / Tax / GST:** can you claim more?
- **Marketing:** are you doing anything – should you?
- **Legal:** legal documentation, estate planning, wills; time for a review?
- **Procurement:** you'll be staggered at the savings you can make.
- **Point of Sale:** become conversant with the latest, ordering and time.

Enterprise Whangamata, your local business association is delighted to present their inaugural Business Expo. The chance for members and non-members to set their businesses and themselves up for the year.

Normally to get in front of some of these people, it might cost you a great deal more than \$200 an hour. Enterprise Whangamata is offering it to the town for the cost of breakfast.

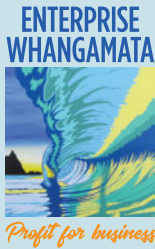
On Tuesday, 5 March, from 7.30am to 9am at the Whangamata Club restaurant, enjoy a delicious 'Carl's Delight' breakfast during which each expert on the panel will present a brief outline.

Then, from 9am to 1pm, you can book a private complimentary 30 minute one-on-one meeting with any of the six experts and professionals this town is so lucky to have.

Numbers are limited, so until 25 February it's EW members first for only \$20 including Carl's Delight; thereafter we welcome non-members for only \$30.

To learn more about the Business Expo, it's presenters and register please go to whangamata.org.nz or see the advertisement on pg 7.

Chair of Enterprise Whangamata, Patrick Kerr believes the town will support this initiative. "Our association is all about helping our town and for most that starts with business. Healthy businesses guarantee our town will remain strong and vibrant. Support this Expo and we will put more of these business initiatives together".



RSA Remembrance Wall taking shape

Project Remembrance update: The second pour of the concrete was laid last week, leaving the RSA Heart to be finished in a different way. Watch this space...

Our local sculptor Ted Pickett has been giving his all, getting the electrical and plumbing completed (special thanks here to Tony Pitcher for electrical hook up and Simon Rogers for plumbing essentials). Our flagpole is with Brandon from Coastal Engineering to be resurrected very soon.

Our RSA President Geoff March, is working closely with the MenzShed on the template to reinstate the brass lettering – key to the design.

We are well on track for ANZAC Day for the big reveal, we are still seeking donations of native timber for slatting for the seats – perhaps you have some under your house, in the attic or leftover from a job... we would love to hear from you!

Call Jennie on 021 0232 1661 or our RSA Manager Kerry 865 9419.



RSA WHANGAMATA



OPEN 6 DAYS
Tuesdays to Sundays from 11am

Live shows & entertainment
Families welcome!
Anyone can join, come see us today

NOT A MEMBER YET?

Our RSA is family friendly and encourages all members of your family to be involved.

Anyone is able to join and we have a FREE Kids Club. Our library has a range of kids & adults books and jigsaw puzzles.



LOOKING FOR SOMETHING TO DO? HAVE THE KIDS/GRANDKIDS?

We have games available to play: Cornhole, Quoits, Giant Jenga, Connect Four and NEW Table Soccer (aka foosball).





Ying's

@ the RSA Thai & European Cuisine

OPEN 6 DAYS: TUE-SUN
LUNCH, DINNER & TAKEAWAYS

Everyone welcome
Lunches daily 11am-3pm
Dinner from 5pm

P. 07 865 9419 [f @whangamatarsa](https://www.facebook.com/whangamatarsa) www.whangamatarsa.com



Whangamata
SERVICE CENTRE



Auto
SUPER SHOPPES
NZ'S PREMIUM AUTOMOTIVE CENTRES

Full Mechanical Repairs, Lubrications and Services, WOFs, Tyres, Tune ups, Batteries, Wheel alignments, Diagnostics.

Scan Tool.

AA Breakdown services
First Assistance Breakdown services

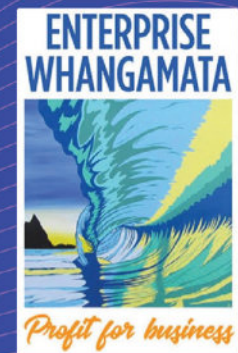



P. 07 865 9435 • 201 Aickin Road, Whangamata
M. 027 608 5770 • E. wgmsc@xtra.co.nz

Enterprise Whangamata presents:

BUSINESS EXPO '24

Breakfast, March 5th
from 7:30 to 1PM,
The Whangamata Club



Come and learn from six of this town's best people. We start with 'Carl's Special Breakfast' where we will introduce our panel. Then after breakfast from 9 to 1, you can book a 25 minute One on One time with the expert of your choice.

Enterprise Whangamata Members **\$20.**
Non-Members **\$30.**

To book your 1-1 meeting with any of our experts, simply email ew@whangamata.org.nz or book online at www.whangamata.org.nz.

Meetings are 25 minutes, and a private boardroom is available should you require confidentiality.

To find out more phone Shaun on 027 9317157



IT SECRETS

Nigel Boot is the owner of Boot I.T. The town's primary communications centre. Nigel's extensive corporate experience combined with his 10 years in Whanga could be just what you're looking for.



POS INNOVATION

Kane Edwards is a local working with Dnero—a global company. His next generation Point of Sale technology is revolutionising the global POS Industry. Their products include point of sale, online ordering, table ordering, time recording, customer loyalty and payment service.



FINANCE

Karyn Baker is your local partner at Money Metrics, Chartered Accountants. Working with clients who want to learn and change, the Money Metrics focus is on mentoring business owners to achieve their desired outcomes. Whilst also offering traditional accounting services, we seek to unlock financial, time and mind freedoms for our clients.



PROCUREMENT

Colin Fairweather is your procurement specialist. Procurement is the process of sourcing goods and services. Phone, power, petrol, coffee. Are you paying too much for them? Often organisations treat their supplier as an afterthought. So, sit back, relax, and let's dive into the world of procurement!



LEGAL

Neil Evans is your local lawyer. His professional, friendly and efficient team at Keam Standen cover a wide variety of law. Their services include commercial and company law, succession planning, property, wills and estates and relationship property.



MARKETING

Shaun Fay has worked in advertising and media all around the world winning over 40 awards for creativity. Recently he helped sell over 1200, \$50 Whangamata Golf Club raffle tickets in 24 hours. Find out how he did it.

101 Lindsay Road decision goes community's way

Many will recall the situation in July 2021, when the property at 101 Lindsay Road was at threat of being declared surplus and sold by TCDC. This resulted in protest from a number of groups, including the Whangamatā Community Marae Trust who had long considered the property as a potential site for a Community Marae.

In response to these objections, TCDC gave the community until December 2023 to develop a business case for the future use of the site.

With the challenge laid, a group of Whangamatā entities came together to tautoko (support) the Marae Trust in the development of a business case. Included were the Eastern Coromandel Community Services Trust, Whangamatā Resource Recovery Trust, the Arts Collective and Theatre Society, MenzShed and others.

In August 2023, after a year's work, the working group submitted a business case to the Community

Board for the establishment of a 'Community Marae and Wellbeing Hub'.

From there, and with the business case endorsed, it went to TCDC where it was fully considered at their December meeting. Locals were given the opportunity to speak, with presentations by the Chairs of the Marae Trust and the Social Services Trust, and from Te Awheroa Gilbert as mana whenua representative.

Council then asked for more time, advising that a decision would be made at their 13 February meeting this year.

As you can imagine, there were great feelings of anticipation leading up to the meeting, with many travelling to hear the debate and the decision, including representatives from Ngāti Pū.

After nearly an hour of questions and answers, Councillors were asked to vote, and in a triumph for community spirit and hard work, the following resolutions were passed:



- Resolved to support the 101 Lindsay Rd Working Group's proposal to establish a Community Marae and Wellbeing Hub over part of the land at 101 Lindsay Rd, Whangamatā.
- Directs staff to enter into negotiations with the 101 Lindsay Rd working group to determine a solution that provides for a viable depot and a viable Community Marae and commences the relevant process to turn a portion

of the land into reserve.

- Requests staff to engage with the 101 Lindsay Rd Working Group and report back to Council with viable options for the lease of part of the land at 101 Lindsay Rd, Whangamatā that meets the needs of all stakeholders.

Fittingly, Councillor Terry Walker who led the motion to defer the land sale in 2021 was in Chambers for the vote.

His grin (and that of fellow Councillor Gary Gotlieb), said it all, with a celebratory haka echoing around the room and hardly a dry eye in the public gallery.

"This is an historic and symbolic day for Whangamatā, and I am excited to see the master site plan developed in conjunction with Council, and then the external fundraising by the Community Groups can get underway", Terry said.

To read the Business Case, you can visit wcm.maori.nz

Sold! For an incredible \$1.67m

A tiny yellow bach on a big section in Whangamatā sold under the hammer last week for an impressive \$1.675 million as buyers continue to hunt for the perfect section to build their dream homes.

The desirability of the prominent corner site on Otahu Road meant the family trust selling it after many decades pocketed \$1,675,000 more than they had been counting on.

Bayleys auctioneer Stephen Shale announced the property on the market at \$1.5m, but the six bidders continued to fight over the 1972 classic just two streets back from the beach placing a total of 25 bids mainly between \$10,000 and \$25,000 increments on Thursday.

Bayleys listing agent Dale Sholson said the 729sqm section attracted a lot of interest from holidaymakers over summer and was marketed as having 'oodles of parking for boats and cars with still room to pitch a tent for family and friends'.

It was also in a popular part of Whangamatā due to being close to both Ocean Beach and the estuary.

"So many people have walked past it for the last 30 and 40 years and always wondered about it," he said.

It was in largely original condition and behind its canary yellow exterior were mint green walls and dark green carpet.

"It was basically untouched from 1972 apart from gas and hot water."



The new owners are understood to have bought it to eventually bowl the existing bach and build a new

home on it just as the people next door had done.

We provide a wide range of services for your Farm Animals:

- Animal Health Plans
- Springtime Emergency Services
- Ultrasound Pregnancy Testing
- Mastitis Management & Prevention
- Lameness Management & Prevention
- Trace Element testing
- Body Condition Scoring
- Reproduction Programmes
- Debudding & Dehorning
- Vaccinations
- Geldings



0800 267 683

farm@corovets.co.nz
www.corovets.co.nz

Waihi Clinic:
10 Mueller St, Waihi

Whangamata Clinic:
215 Aickin Road, Whangamata

Tairua Clinic:
1 Wharf Road, Tairua

TCDC decision applauded



Over the last 12 months, you will have read about the work and ideas of the Whangamata Ratepayers Association (WRA) as we have moved through the year with a wide range of initiatives and reported the various outcomes in this column. We have also focussed on raising awareness of and stimulating further discussion on the many local issues and opportunities which impact our community.

WRA applauds the recent decision by TCDC not to declare 101 Lindsay Road surplus to requirements, the importance of retaining this land for the benefit of the community and future generations cannot be underestimated. Congratulations to everyone involved in achieving this landmark result.

This Saturday, 24 February, at 11am, the Whangamata Ratepayers Association AGM will take place in the Baptist Hall on Port Road, Whangamatā, followed by our guest speaker Mayor Len Salt. Your attendance would be welcome and appreciated.

The hall will be open from 10:30am onwards for WRA member registration. Members of the public are also invited to attend the meeting and we advise all those planning to attend not to leave it to the last minute to arrive. AGM proceedings will begin promptly at 11am at which point the doors will close.

Ratepayers' associations are often perceived as being at the bottom of the pyramid of local government participation. WRA is working hard to reverse that perception and to create change which requires action in the form of engagement. We invite you to join us on that journey.

Becoming a financial member of the Whangamata Ratepayers Association is a first step. WRA subscription is \$10. Putting your name forward to join the WRA management committee is a slightly larger step. Our management committee would welcome new members to make a difference at this grassroots level of local government and help overturn the pyramid in the coming year.

- Whangamata Ratepayers Association

Community pool now more accessible

Whangamata Real Estate Community Swimming Pool recently installed an accessible hoist for those with physical difficulties when accessing and leaving the pool.

This was made possible by generous donations from Pub Charity Ltd and Whangamata Community Health.

Providing access for all has always been a high priority for the Whangamata Community Swimming Pool management committee, we are extremely grateful to these organisations who supported our vision.

Harry Sydney the first person to access the pool on the hoist, with pool lifeguards Denise Boston and Monique Thomas on hoist controls.



Harry was able to "enjoy the benefits of being in the pool, the first time for 20 years" said a beaming Harry.

We welcome families and individuals who may wish to use this device and look forward to meeting potential users who may just wish to come and check it out.

To give pool staff prior notice, and arrange set up of the hoist, please contact the pool through the Whangamata Real Estate Community Swimming Pool Facebook page or email manager.whangapool@gmail.com

- Whangamata Community Swimming Pool Management Committee.

\$1 WING WEDNESDAY

GRAB AS MANY OR AS FEW AS YOU WANT

CONDITIONS APPLY
DINE-IN ONLY

3 SOME THURSDAY

Grab any gourmet pizza, 2 pints of tap beer OR 2 glasses of house wine for only...

\$33

Every Thursday!

Book your table now - phil@crafthauswhanga.co.nz

FRIDAY@ CRAFT HAUS

\$10 PINTS any PROPER PINT tap beer

\$10 PIZZAS any house pizza

AFTER WORK SHOUT

2.30PM TO 5.30PM

SHELLFISH SATURDAY

GRAB 1KG OF NZ GREENLIPPED MUSSELS W GARLIC BREAD + A PINT OF TAP BEER OR GLASS OF HOUSE WINE

ONLY \$25

SLIDER SUNDAYS

EVERY SUNDAY

\$2 PER SLIDER

Just like a regular burger, but cuter!

DINE-IN ONLY
Conditions apply

Book your table
phil@crafthauswhanga.co.nz

Follow us on Facebook & Instagram to keep up to date with all our events & deals @crafthauswhanga

CRAFT HAUS
Gastropub Est. 2022

711 Port Road, Whangamata
[@crafthauswhanga - www.crafthauswhanga.co.nz](https://www.crafthauswhanga.co.nz)
07 865 6300

Owens & Groube claim first summer wins

Dunedin's Alexis Owen and Pauanui surfer Lola Groube have clinched their first major wins of the summer taking out the second leg of the Billabong Grom Series presented by Oceanbridge completed at Whangamatā over the weekend. The two surfers stormed to victory in the Under 16 Divisions.

The surf faded away after day one of the event leaving waves under the 1.0m mark but the offshore winds kept conditions clean all day to complete the second of three events in the series.

Alexis Owen had stood out on day one of the event and despite a decrease in swell, the powerful young surfers looked unstoppable on Sunday, surfing to a 14.33 point heat total.

"Pretty happy with the win today, it was my first major win of the year and ends a streak of seconds, yeah, winning is good" said a modest Owen.

Where others battled to find the peeling waves in the afternoon low tide, Owen seemed to pick off the best waves, a strategy he had from the outset.

"I was just waiting for the bigger sets that held up and focussed on smashing them," he added as he now turns his focus to the final event of the series held at Piha on



Harrison Biddle (fourth in the Under 16 Boys Division). Photo by PhotoCPL.

the 24-25 February.

Owen beat Sam Frazerhurst (Auck) in the final, Frazerhurst getting the edge in a close fought battle for the runner up position with Jaxon Willows (Mnt) finishing in third place and first time finalist Harrison Biddle (WGM) getting onto the podium for the local surfers finishing in fourth.

Lola Groube controlled the Under 16 Girls Final from start to finish but not before a late scare. Seemingly safe in first place with Raglan's Alani Morse sniping the line up and

chasing a 7.91, it was actually Maja Mateja (Rag) that came close to snatching the victory.

The Raglan surfer waited over 15 minutes to get her first wave but posted an 8.0 point ride.

She raced back out the back and tried to find a 5.14 for the win but came up short with a 3.57, enough to get her into second and push Morse back to third with Poppy Entwisle (Tara) in fourth.

"That was my first win this year and I am super stoked," said Groube. "This

weekend I found the right waves in the right places and that got me the win but all the girls have been pushing my surfing, we often end up in the same heats at the end of the events so it is good to surf against them all the time and push each other's surfing," added Groube.

Sol Fritchley claimed his third straight win of the season in the Under 14 Boys Division, this time getting pushed by Jesse Frazerhurst (Auckland) who matched his older brothers result with a second. Piha groms Zeke Pragert and Zac Becroft finished in third and fourth respectively.

It was the diminutive Zade Nias Phillips from Ahipara who won the Under 14 Girls Division.

With new talent emerging from a number of regions, this is the third different event winner this season. Mount Maunganui took a stranglehold on the minor placings with Jayda Bramley, Millie Dyck and Nami Marsden finishing second through fourth.

Maya Mateja won the Volkswagen Highest Single Wave Score Award for her 9.43 point ride in the semifinals of the Under 16 Girls Division.

Full results and NZ Grom Series rankings can be viewed at www.Liveheats.com/SurfingNewZealand.



Under 16 Boys Division (left to right - Alexis Owen, Jaxon Willows, Harrison Biddle, Sam Frazerhurst). Photo by PhotoCPL.



Under 16 Girls Division finalists (left to right - Lola Groube, Maya Mateja, Alani Morse and Poppy Entwisle). Photo by PhotoCPL.



TUNE INTO 95.1 FM



WSLSC Northern region scoops 27 medals



Last weekend, the WSLSC hosted the Northern Regional Seniors Championship. Hundreds of athletes and their supporters entered with Whangamatā being a central location to hold the intrepid competition.

There held was 127 races, where all the medals were up for grabs and the Whangamatā club results are an incredible: 27 medals, 7 Gold, 11 silvers and 9 Bronze.

Gold and Silver for Whangamatā in the U15 Beach Flags with Max Riordan taking the gold over fellow teammate Will Robinson. Both boys featured again winning gold alongside teammates Finn Fremantle and reserve Oscar Kidd in the U17 beach relay. Gold also for Holly Warden in the U17 Female Board Race and Isla Petherbridge in the Under 19 Female Surf Race.

Double gold for Maggie Robinson in the U19 Female Ski and Under 19 Female Board Races. Madi Kidd won Gold in the Open Women Beach Flags.

With 17 clubs represented, Whangamatā placed 5th overall, a triumphant result in any one's book.

WSLSC also hosted on 10 and 11 February, alongside Eastern Region Surf Life Saving, the Eastern Region Junior Championships. Racing both



Saturday and Sunday.

The Eastern Regional Junior Carnival offers almost all of the events available at Oceans '24 Festival of Surf. This provided a weekend where Junior Lifesavers can test their skills and speed across the sand and in the surf to demonstrate water confidence and teamwork.

WSLSC team of 12 has trained hard all season under Hunter's teachings and coaching and the weekend racing efforts showed. Well Done to Beth, Toby, Harlee-Rose, Smith, & Olivia on your first regional carnival. Special mention to our five Under 13/14 Whanga all-girls Grand Cameron Composite Team with Olivia, Poppy, Nelly, Ruby & Zara claiming Silver place beating the clubs with the correct combination 3F/3M.



Coach Hunter Robinson with the Junior Team.

Richmond Villas

LIFESTYLE VILLAGE

*Living the lifestyle,
loving the choice...*

A Lifestyle Village in Thames on the Coromandel

AVAILABLE NOW:

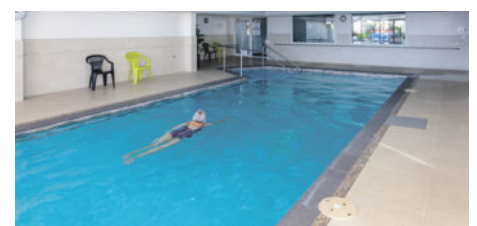
- **TWO BEDROOM VILLAS**
- **2 BEDROOM APARTMENT ON LEVEL 2**

ENQUIRE TODAY!

All apartments are within walking distance to Thames' shops, cafes and walkways. The perfect location to enjoy your fun-filled retirement.

Our open plan, single level apartments feature covered balconies with fantastic views of the sea, Kuaeranga River and mountains.

Each unit's elegantly finished kitchen, lounge, bedroom and bathroom offer stylish warmth and light. All residents enjoy scenic views from each level's shared lounges, use of the Village Community lodge and participation in all activities and amenities at your leisure.



Phone us to view by appointment
Come and experience the difference!



82 Richmond Street, Thames
0800 868 5484
www.richmondvillas.co.nz

Another star looking over us

On 29 January, 2024, we lost our friend Nita Petersen. A remarkable woman who lived a remarkable life.

Nita was known to so many of us in Whangamatā. Earlier years saw Nita and family holidaying at the Barbara Avenue Camp.

Then, around 20 years ago Nita, Pete and family came to live in Whangamatā permanently.

Together they designed and built their home in Given Avenue and the beginnings of a beautiful garden where so many of us have enjoyed its beauty and all the birds that frequented it.

Nita quickly became involved in the Garden Club, Probus, Bromeliad society and Arts collective. The past five years saw her an active member of the Whangamata Cancer Support Group.

On many occasions, Nita hosted the Bromeliad Society, Garden



Club and many Art Trails in her lovely garden. Not so very long ago, Nita was made a Life Member of the Garden Club Not only was she a great artist but she was a mentor to many as well' teaching students various art skills.

Nita was also very community minded and worked hard to help the town raise money for our Community hall which is such an asset to our town

When asked to become a resident judge for the garden club monthly exhibits, she agreed, researched and carried out this task with much enthusiasm.

A friend is a present you give yourself. She is so missed. RIP Nita.

A memorial Service is to be held for Nita at the Whangamata Ocean Sports Club, Friday 5th April 2024 from 10am. All friends welcome.

- Jan Collins.
Garden Club; Cancer Support



Can you help? Jordan has not been found

It's been 16 weeks (29 October) since Jordan and his dog Bagho entered the Wentworth Valley track at approximately 1pm to go for a walk toward the waterfall.

Jordan has not been seen since.

The ground search was called off after five days.

There were a few occasions over the following weeks when another search was made in particular areas but there were no clues found at all.

Nine weeks later, Bagho walked out of the bush at Wire Road, approximately 20kms away.

The Police organised another search and, on two occasions, they searched the area where he came out, Wire Track and Maratoto Track.

We would like to conduct a more extensive search of the Wentworth Valley area from the Waterfall Lookout, where there was an unconfirmed sighting on the day he went missing, towards the track crossing the Tairua river.



CAN YOU HELP?

The help we need is for the people to be hunters and/or bush savvy. We need them to be safe because it's the bush we are searching, the track and close to the track has already been searched.

It's important they have GPS and/or personal locator beacons.

The search will be coordinated by a local man who has over 35 years experience in the bush and knows the area well.

Contact Sue Oliver on 0274 77 66 48.

Beach art creations at our library

The Whangamata Community Library have started creative afternoons on Wednesdays from 3pm to 4pm, during the school term, aimed at primary school-aged children.

There will be a different activity each week, including craft, music, Lego, growing plants and more.

Come alone boys and girls, it's so much fun!

A goin coin donation towards materials would be appreciated.



Plenty of fun-filled activities for Kids' Club

We thoroughly enjoyed caring for our community's children over the five weeks, the programme was a huge success, adding another exciting edition of this popular holiday pastime.

We are proud to work alongside local businesses and talents; we really appreciate their efforts and contributions to the programme. Our highlights included the Whangamata Fire Brigade who visited us to share their knowledge, cooling off the children with their fire hose! As well as kayaking and paddle-boarding with Chris from Pedal and Paddle, T-Ball coaching with Lindsay Martin, and handicrafts with weaver and needle felter

Cherry Estcourt.

The children also made flower arrangements for Comfort Kai, our weekly free community meal and we enjoyed exploring our beautiful backyard with trips to the beach, the wharf and further afield, to Broken Hills and Parakiwai watering hole.

You can see us next time during the April school holidays: From 8:30am to 3:30pm. Ages 5 to 13 years old. \$25 a day.

WINZ subsidies available for eligible families.

Call 027 470 1714 or email info@communityservices.org.nz to enrol.



50% OFF
all clothing in store



New owners! Jenny & Geordie, locals in Whangamata for 12 years!

www.whangamatacycles.com

Phone 865 8096

700 Port Rd, Whangamata

THE BRITTS JOB TOUR 2025



'Darling Buds of May' Tour

\$6,999 pp**

21 Nights - 5th - 27th May, 2025
Including the *Chelsea Flower Show!*



The Ultimate 7 Weeks of Summer Tour

\$14,999 pp**

49 Nights
June/July 2025
Inc. the *Edinburgh Tattoo!*



Meet your Hosts at the Beach Hop Nostalgia Fair!

**Twin Share, Land Only, Maximum 20 Guests per tour. Ts&Cs apply, see www.thebritsjob.com for full details.

Call the Tour Host on 0274 865 706

Near perfect conditions landed huge results



Darryl having Snapper for dinner!

The WOSC Classic Fishing Tournament was underway from 8 to 10 February in hot conditions from 6am.

There were an incredible 81 boats and 294 anglers out on the water taking part in the big WOSC Classic fishing tournament.

An incredible prize pool of \$70,000 was up for grabs!

Heaviest Snapper 5.06kg:
Baylee Sonntag
Heaviest Kingfish 23.46kg:
Craig Bishop.



The first Tagged Marlin of the season, winning \$1,000 sponsored by A1 Homes Coromandel.

No mahimahi were landed.

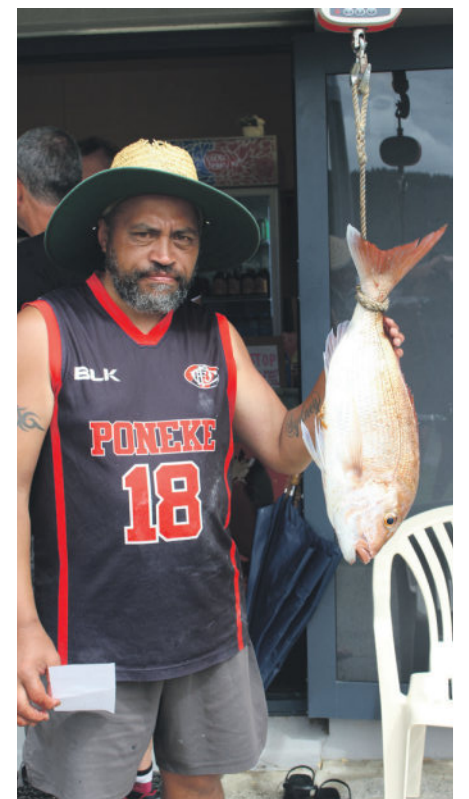
There were six Tag & Release Marlin. No marlin were weighed in as they were chasing the cash prizes totalling \$15,000.



The winner of \$10,000 pink shirt last man standing prize.



The stage and all the prizes.



Dom brings home the bacon!

S M O K Y P A L L E T

F R E E H O U S E

Buckets of
Zeffen
for \$35

4 per Bucket
Conditions Apply

PALS BUCKETS \$30
SUMMERS HERE

4 PER BUCKET
*CONDITIONS APPLY

BEER BUCKETS FOR \$25

4 PER BUCKET
*CONDITIONS APPLY

TWO FOR \$30

SUMMER SPRITZ
BLOOD ORANGE, RUBY RED GRAPEFRUIT
SAUVIGNON BLANC GIN

Buckets of
Corona
for \$30

1 Per Bucket
*CONDITIONS APPLY

WHERE TO BE OVER SUMMER!

@Smokypalletwhanga

@Smokypallet

World Day of Prayer

FRIDAY, 1 MARCH

"I Beg you...Bear with One Another in Love"

World Day of Prayer is an international movement of Christian people in many different traditions that have a continuing relationship of prayer and service. People from various denominations gather in one another's churches to celebrate, using a Worship Service prepared by women of a different country each year. Women, men and young people share the language, customs and music of that country, right around the globe.

Observed on the first Friday in March each year, is a worldwide movement of informed prayer involving people of many denominations and languages in more than 170 countries. Each year the service is written by women in a different country who share the hopes and fears, joys and sorrows, opportunities and needs of their country. It affirms that informed prayer and prayerful action are inseparable.

This year the service is prepared by the Palestine Christian Committee. It will be held at the Community Church on Beverly Terrace, Whangamatā, at 10am.



This year, the service is led by the Methodist Presbyterian Church and be followed by a morning tea.

All Churches will be asked to share in this International service.

World Day of Prayer is an international movement of Christian people in many different traditions that have a continuing relationship of prayer and service. People from various denominations gather in one another's churches to celebrate, using a Worship Service prepared by women of a different country each year. Women, men and young people share the language, customs and music of that country, right around the globe.

World Day of Prayer was begun by a group of women in the United States in 1887 and has grown to include over 180 countries and regions worldwide. In New Zealand, the first nationwide worship service was held in 1931. In 2008, World Day of Prayer in this country was incorporated as a Society.

Each year the National committee takes the service and brings it to the local communities while gaining an ever-growing and deepening understanding of the global and ecumenical community as a dynamic unity made visible on the first Friday of March. This process takes a lot of love, care and work. It takes open hearts, and a willingness to go beyond what is familiar.

All enquiries to Jean Armitage, Methodist/Presbyterian Church - phone 865 7327.



Books

ANNA O

MATTHEW BLAKE

Anna hasn't opened her eyes for four years... Not since the night she was found in a deep sleep by the bodies of her best friends, suspected of a chilling double murder.

For Doctor Benedict Prince, a forensic psychologist on London's Harley Street, waking Anna O could be career-defining. As an expert in sleep, he knows all about the darkest chambers of the mind, the secrets that lie buried in the subconscious.

Awakening Anna O's treatment - studying his patient's dreams,combing her memories, visiting the site where the horrors plated out - he pulls on the thread of a much deeper, darker mystery.



THE SHOWMAN

SIMON SHUSTER

Based on four years of reporting, extensive travels with President Zelenskyto the front, and dozens of interviews with him, his wife, his friends and enemies, his advisers and military commanders.

The Showman tells an intimate story and eye opening story of the President's evolution from a slapstick actor to a symbol of resilience, revealing how he managed to rally the world's democracies behind his cause.

BOTH BOOKS ARE AVAILABLE FROM WHANGA BOOKS

Poet's Corner

The Recent Arrival

The young girl was new to the school
 She sat quietly and listened
 The teacher was explaining the importance of
 How best a town can work
 The young girl's eyes just glistened
 The teacher spoke softly yet loud enough
 So everyone could hear
 The 10-year-olds were attentive
 No rattle from a chair
 She spoke of the importance of

helping where we can
 It really makes a difference if we lend a helping hand
 The young girl looked uneasy her discomfort plain to see
 That's when the girls behind her moved to her left and to her right
 They said that they would help her settle in
 And keep her in their sight
 The young girl's eyes were speaking her answer in her tears
 She was sure she was welcome here
 And held their hands gently to alleviate her fears

Whangamata

PRECISION[®]
 REAL ESTATE MREINZ



203a The Square, Whangamata

- Beautifully presented 2 bedroom main house
- Freehold 504m² site
- Gorgeous consented sleep out with bathroom
- Great parking at the near
- Wonderful outdoor living

**Open Homes Saturday and Sunday
 11:00am-11:45am**



PHIL CLARK
 Associate

📞 021 940 041

✉️ phil@precision.net.nz

TCDC Business Forum Hui 2024

Our Business Associations (BAs) are running hot early in 2024, continuing to drive activity and morale around our district so that we have vibrant and thriving communities. This is the result of a joint effort between our dedicated BA chairs and members, our Council and Ministry of Business, Innovation and Employment (MBIE), to push ahead with initiatives for post recovery and resilience.

To keep up the momentum, our Economic Development team hosted a business forum hui in Whangamata. This was an opportunity to discuss how our Council can collectively support our business communities throughout 2024.

The hui was attended by business associations, information centres, and other representatives who supported our business Cyclone recovery work last year.

Business Association highlights and upcoming events:

All of our district's business associations (BAs) were allocated funding mid-2023, as part of a joint initiative between our Council and MBIE to support our local economy following the impact of Cyclone Gabrielle. Each BA developed a plan of work in consultation with our Economic Development Team. The focus was on creating initiatives that would attract visitors back to



the region, after the devastation caused by the weather events at the beginning of 2023.

Asking the BAs to develop and lead this work, has helped empower local business owners to make decisions based on what they saw as the best opportunities to reinvigorate their local business community. Initiatives have included events, networking opportunities, training and upskill sessions, and one-on-one support with business support mentors.

Here's some highlights and upcoming events of note.

Thames Business Association

Thames BA also hosted a hugely successful Wings and Wheels this summer, with over 5,000 people enjoying a showcase of aeroplanes, both modern and vintage from around the world, vintage cars including a 1926 Tudor Form Model

T, Trucks, motorcycles music and more. explorethames.nz/business-association

Enterprise Whangamata

Business After 5 hosted 'Noddy Watts from Beach Hop at Edisons Cinema Lane, which is the new event facility that's recently opened. Booking is also open for the Business Expo '24 on 5 March. Local experts in IT, Finance, Procurement, POS Innovation, Legal and Marketing will be available for private meetings, questions and conversation. Details for both events can be found here.

Enterprise Whangamata also recently hosted the inaugural Paradise Coast Golf Classic. This fantastic event attracted over 100 golfers to three days of golf, playing between The Lakes Resort in Pauanui, Tairua Golf and

Country Club, culminating in a third day of competition at Titoki in Whangamata.

And keep an eye out for updates on this year's Wild Women's Weekend, scheduled for May.

www.whangamata.org.nz

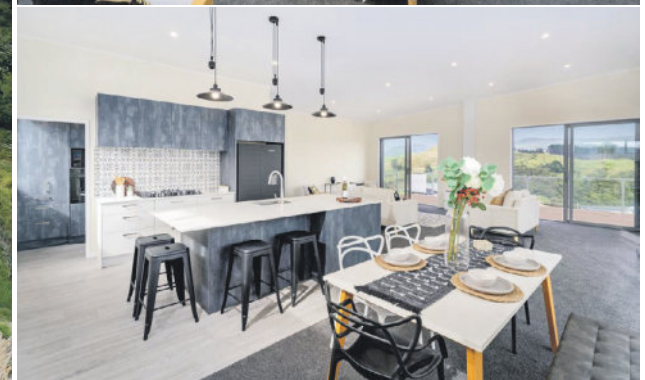
Tairua BA

The newly formed Tairua Business Association is doing a fantastic job providing avenues for local entrepreneurs and businesses to advertise their services, products and specials, and to share events and matters of interest to the community. It supported the recent Amazing Race which saw teams of six race around Tairua using a map and navigational skills to traverse the course as quickly as possible, with prizes for best dressed, those who had the most fun and spot prizes throughout the day.

Peter Hunt chairperson@tairua.biz

Exciting Pauanui

Community unity was on full display when Pauanui locals and visitors joined the inaugural Pauanui Pink Walk in a show of support for the Breast Cancer Foundation New Zealand. The coastal town turned into a pink haven as 135 participants, spanning all ages, donned vibrant outfits, and walked together in a visually-stunning spectacle along Pauanui's scenic pathways and beach.



Whangamata 3 Rewarewa Rise

Wow factor!

New build. Panoramic country views. Be the first to live in this exquisitely designed 220 sqm (more or less) castle. High ceilings, top of the line fittings and plush flooring make this home an opulent masterpiece. Located at the highest point in the subdivision this home enjoys privacy and security on its 1482 sqm (more or less) site. Regardless of which deck you choose to relax on, the rural views are stunning and very calming. A large fourth bedroom/games room creates space here for everyone with its own ensuite. A designer kitchen with scullery, is part of the open plan living and makes food preparation a delight. The high stud double garage allows for campervan, boat, or large vehicles. (Roller door 3m high) Upstairs bedrooms are of generous size with stunning rural outlooks from most windows.

An opulent masterpiece.

bayleys.co.nz/2221264

4 3 2 1482 sqm

Auction (If not sold prior)
11am, 14th March 2024
96 Ulster Street, Hamilton
Gordon Turner 021 385 385
gordon.turner@bayleys.co.nz
Carol Hatton 0275 743 758
carol.hatton@bayleys.co.nz

MH REALTY LTD, BAYLEYS, LICENCED UNDER THE REA ACT 2008



Whangamata Real Estate

LICENSED REAA 2008

07 865 8499 328 Ocean Road, Whangamata whangamatarealestate.co.nz



PRICE BY NEGOTIATION

623B Harbour View Road

- A beautiful home with breathtaking harbour views
- Open plan kitchen, living and dining area
- Four double bedrooms, two bathrooms
- Second living area on ground floor with the ability to be semi self-contained
- High-stud double garage and meters to the boat ramp

View 2pm Saturday 24 February & 2pm Saturday 2 March



Chris Speedy 021 747 901
Katie Speedy 021 382 022
View Listing: whanga.co/8288



PRICE BY NEGOTIATION

246A Beverley Terrace

- Excellent location being so close to the beach
- Three bedrooms, 3 bathrooms
- Open plan living with an outstanding kitchen and dining space
- Large second living space on ground floor
- Single garage with workshop and storage at rear
- Lovely outdoor area with saltwater pool

View 11am Saturday 24 February & 11am Saturday 2 March



Chris Speedy 021 747 901
Katie Speedy 021 382 022
View Listing: whanga.co/8299



ENQUIRIES OVER \$2,595,000

68 Parakiwai Quarry Road

- A beautiful 2-hectare lifestyle property located just minutes from Whangamata
- The large 236sqm house has three double bedrooms and two bathrooms
- Generous living area with lovely rural views
- Internal access double garage
- 12m x 18m man shed, with 3 x 3.4m high sectional doors
- Nice level land with lots of native plantings, established plum and citrus trees

View by appointment



Chris Speedy 021 747 901
Katie Speedy 021 382 022
View Listing: whanga.co/8274

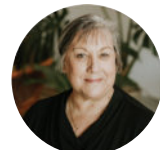


ENQUIRIES OVER \$1,475,000

502A Harbour View Road

- 4 Bedrooms, 2 bathrooms, rumpus/5th bedroom
- Seamless indoor-outdoor flow
- Easy access to boating, fishing, and other water activities
- Ample parking options for cars and the boat
- Fantastic location

12pm Saturday 24 February & Sunday 25 February



Nancy Millett 021 517 708
View Listing: whanga.co/8291

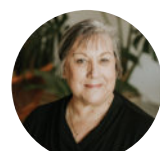


\$1,475,000

114 Tamaki Road

- This 2 bedroom, 2 bathroom property offers the perfect blend of modern living and a convenient location
- The modern kitchen is a chef's dream
- Large open-plan living area provides ample space for entertaining
- Spacious deck fitted with cantilever umbrella and shade sail
- Additional separate cabin

1pm Saturday 24 February & Sunday 25 February



Nancy Millett 021 517 708
View Listing: whanga.co/8286



Whangamata Real Estate

LICENSED REAA 2008

07 865 8499 328 Ocean Road, Whangamata whangamatarealestate.co.nz

11 Titoki Place

- Brand new architectural designed build
- Adjacent to 18 hole golf course
- 4 bedrooms, spacious master includes ensuite, walk in robe and direct access to private deck area
- Superbly appointed kitchen and large living area
- This beautiful property comes with many extra features

View by appointment



Colin Thompson
021 723 723
View Listing: whanga.co/8283



PRICE BY NEGOTIATION

420A Rangī Avenue

- Located in a prime position with easy access to the main beach
- Open plan living opening onto a covered deck area
- Three bedrooms
- Off-street parking with storage area for the beach toys

View 12pm Sunday 25 February



Colin Thompson
021 723 723
View Listing: whanga.co/8298



PRICE BY NEGOTIATION

200 Sylvia Road

- Prime central beach corner site location
- Easy walk to the Surf Club, Williamson Park and the Golf Club
- Open plan living with direct access to louvered deck area
- 3 bedrooms including extra large bunk room
- Spacious double garage with internal access

View 1pm Saturday 24 February



Colin Thompson
021 723 723
View Listing: whanga.co/8277



\$1,495,000

132 Achilles Avenue

- Two large bedrooms plus sleepout and caravan with solid annex
- Open plan living opening onto spacious covered veranda area
- Outside bath, shower area and additional separate toilet
- Large elevated site

View 11am Saturday 24 February



Colin Thompson
021 723 723
View Listing: whanga.co/8297



ENQUIRIES OVER \$1,200,000

106 Waverley Place

- Single level 3-bedroom home
- Plus bonus of a spacious sleepout
- Open plan living with attached conservatory.
- 6m x 6m separate garage
- Plenty of parking at rear of site
- Peaceful cul-de-sac street

View 2pm Saturday 24 February



Colin Thompson
021 723 723
View Listing: whanga.co/8293



ENQUIRIES OVER \$995,000



Whangamata Real Estate

LICENSED REAA 2008

07 865 8499 328 Ocean Road, Whangamata whangamatarealestate.co.nz



208 Russell Bruce Place, Onemana

- Modern home with three very spacious double bedrooms and 2 bathrooms
- Large open plan kitchen/dining/lounge flow onto a substantial deck exposing wonderful ocean and island views
- Double garage and laundry
- Separate serviced sleeper
- Newly planted terraced grounds

[View 11am Saturday 24 February](#)



Julian West
027 222 4364

[View Listing: whanga.co/8284](#)



111 Ngati Pu Place

- Nicely presented 4-year-old GJ Gardener Home
- Three bedrooms – all with wardrobes, master with ensuite
- Spacious open plan kitchen, dining, lounge area
- Internal entry double garage
- Detached serviced studio, which offers extra accommodation, combined bathroom/WC, kitchenette & lounge

[View by appointment](#)



Julian West
027 222 4364

[View Listing: whanga.co/8306](#)



104 Ngati Pu Place

- A very well presented 3 double bedroom property
- Modern kitchen and dining room with a heat pump
- Separate bathroom with bath and shower
- Lockup single entry garage/workshop
- Fully fenced property with garden shed

[View by appointment](#)



Julian West
027 222 4364

[View Listing: whanga.co/8269](#)



115A Otahu Road

- Open plan living with direct deck access
- North/west aspect to capture the sun
- Three bedrooms
- Separate garage/workshop
- Easy care front site

[View 11am Sunday 25 February](#)



Colin Thompson
021 723 723

[View Listing: whanga.co/8256](#)



15/135 Waireka Place

- Secure this prime building site
- Development or land bank opportunity
- Estuary, ocean, and island views beyond
- Substantial 1086sqm north/east facing site
- Preliminary retaining work completed

[View by appointment](#)



Colin Thompson
021 723 723

[View Listing: whanga.co/8276](#)

WHANGAMATĀ SANDS

LIVE YOUR
BEACHSIDE DREAM



CONSTRUCTION COMMENCING 2024



FREEHOLD LUXURY
HOMES SELLING NOW



4 Bedroom



3 Bathroom



Media Room (in Lots 2 - 5)



Double Garage (lift option available)

104 BARBARA AVENUE (Site accessed via St Patricks Row)

whangamatasands.co.nz

Neil Dayal
Barfoot & Thompson
027 322 0989
n.dayal@barfoot.co.nz

Colin Thompson
Whangamatā Real Estate
021 723 723
colin@whangamatarealestate.co.nz

BARFOOT
THOMPSON &
PROJECTS

Whangamata
Real Estate



LINDSAY TURNBULL

0274 238 093

lindsay.turnbull@realty.co.nz

Ask me about my extremely competitive commission!

Thank you so much for all you have done for us. We will be forever grateful; you are absolutely fabulous! We really do appreciate you.

RAM & JILL, SELLERS

Throughout the process and successful sale, Lindsay kept us fully informed on the progress and the reactions of prospective buyers by way of phone and text messages. She has been an excellent and knowledgeable person to deal with on our behalf, and we have no hesitation in recommending her to any future sellers.

DENIS & SHARON, SELLERS

Lindsay's successful marketing campaign with great photography and a cool video along with the @realty team proved to be the difference in selling our apartment in a very challenging and difficult market. With a limited buyer pool, Lindsay's marketing generated lots of enquiries and good attendance numbers at the open homes.

MAREE & DARRYL, SELLERS

Lindsay from @realty was simply amazing. She worked so hard to make our purchase come together when we thought it would all fall over. She didn't stop there; Lindsay worked above and beyond expectations through the due diligence and handover process. Straight up info we could trust. We couldn't recommend Lindsay more highly.

BLUE & KATEY, SELLERS



105B TOBIE PLACE, WHANGAMATA

3 BED | 2 BATH | 3 CAR | GARAGE | OFFICE



SPACIOUS AND SEAMLESS

This is a true home. This lovely house can not be completely expressed through pictures, it needs to be viewed in person. Open to view and private inspections will be as normal but we feel that a chat and a cup of tea is more suitable for 105B. We would love to know what you feel a fair amount would be for this forever piece of Whangamata Off the family-friendly cul de sac, the driveway leads you to the established garden.....quiet and private.



CLASSIFIEDS

PUBLIC NOTICES



WHANGAMATA SLSC
37°20'24"S 175°87'88"E

WHANGAMATA SURF LIFE SAVING CLUB INC

NOTICE OF ANNUAL GENERAL MEETING TO BE HELD AT THE CLUBROOMS CORNER OF LOWE STREET & ESPLANADE DRIVE WHANGAMATA

10.00AM SATURDAY 30 March 2024

Nominations for Board and Committee members, proposed motions and other items of business must be received by the Club from Members by **15 MARCH 2024**

Nominations, proposed motions received, and the agenda will be displayed in the clubrooms and on the club's website (whangamatasurf.co.nz) from **22 MARCH 2024**

PUBLIC NOTICES



RSA

RETURNED AND SERVICES ASSOCIATION

FIREWOOD RAFFLE

Trailer load of mixed pine & gum

\$2 raffle tickets selling now!



FREE DELIVERY TO WHANGAMATĀ

All members c'mon and get your tickets!

Winter is coming...

Sports results

MAH JONG

16 February: We had 55 players present. The winners were: 1st with 41 pts Christina Sadler; 2nd with 39 pts Carol Archer; 3rd with

36 pts Donna Lowrie.

The lucky number today was 16 which 2 people achieved but Shona Corbett was drawn as winner.

We want your sports results!

Send them to whangamataneews@gmail.com

CARAVAN FOR SALE

Jayco 28 Foot 2002 - VIEW LOCALLY



Need room for family this summer?

Holiday workers need accommodation?

AFFORDABLE TINY HOME!

Totally renovated, new carpet, vinyls, repainted interior, shower, toilet, double bed, oven, it really is chic! All the extras! Registered.

Price reduction - enquire today to view!

Contact 021 0232 1661







Whangamatā Tides 2024

FEBRUARY 2024 🌑 New Moon: 10th 🌕 Full Moon: 25th

Date	High tide AM	Height (m)	High tide PM	Height (m)	Low tide AM	Height (m)	Low tide PM	Height (m)	Sun rise	Sun set
23 Fri	7:21	1.8	19:37	1.7	0:54	0.5	13:28	0.6	06:53	20:04
24 Sat	8:06	1.8	20:22	1.7	1:41	0.5	14:14	0.5	06:54	20:02
25 Sun	8:47	1.8	21:04	1.7	2:24	0.5	14:56	0.5	06:55	20:01
26 Mon	9:26	1.8	21:43	1.8	3:04	0.4	15:34	0.5	06:56	20:00
27 Tue	10:02	1.8	22:21	1.8	3:42	0.4	16:11	0.5	06:57	19:58
28 Wed	10:38	1.8	22:58	1.8	4:19	0.4	16:47	0.5	06:58	19:57
29 Thu	11:14	1.8	23:36	1.8	4:56	0.5	17:23	0.4	06:59	19:56

MARCH 2024 🌑 New Moon: 10th 🌕 Full Moon: 25th

Date	High tide AM	Height (m)	High tide PM	Height (m)	Low tide AM	Height (m)	Low tide PM	Height (m)	Sun rise	Sun set
1 Fri			11:51	1.8	5:35	0.5	18:01	0.5	06:59	19:55
2 Sat	0:15	1.7	12:30	1.8	6:16	0.5	18:41	0.5	07:00	19:54
3 Sun	0:58	1.7	13:12	1.8	7:01	0.6	19:26	0.5	07:01	19:53
4 Mon	1:46	1.7	13:59	1.7	7:50	0.6	20:15	0.5	07:02	19:51
5 Tue	2:41	1.7	14:52	1.7	8:45	0.6	21:10	0.5	07:03	19:50
6 Wed	3:41	1.7	15:52	1.7	9:45	0.6	22:11	0.5	07:04	19:48
7 Thu	4:44	1.7	16:57	1.7	10:47	0.6	23:13	0.4	07:05	19:47
8 Fri	5:45	1.8	18:02	1.8	11:53	0.5			07:06	19:46
9 Sat	6:44	1.9	19:04	1.9	0:14	0.4	12:50	0.4	07:07	19:44
10 Sun	7:39	2.0	20:02	2.0	1:12	0.3	13:46	0.3	07:08	19:43
11 Mon	8:33	2.1	20:57	2.0	2:07	0.2	14:40	0.2	07:09	19:41
12 Tue	9:24	2.1	21:50	2.1	3:00	0.2	15:32	0.1	07:10	19:40
13 Wed	10:15	2.1	22:41	2.1	3:52	0.2	16:23	0.1	07:11	19:38
14 Thu	11:06	2.1	23:32	2.0	4:44	0.2	17:13	0.1	07:12	19:37
15 Fri			11:56	2.0	5:35	0.2	18:02	0.2	07:13	19:35
16 Sat	0:24	2.0	12:46	2.0	6:28	0.3	18:53	0.3	07:14	19:34
17 Sun	1:17	1.9	13:38	1.9	7:22	0.4	19:44	0.4	07:15	19:32
18 Mon	2:13	1.8	14:32	1.8	8:18	0.5	20:39	0.5	07:16	19:31
19 Tue	3:10	1.8	15:28	1.7	9:17	0.6	21:37	0.5	07:17	19:29
20 Wed	4:09	1.7	16:27	1.7	10:17	0.6	22:36	0.6	07:18	19:28
21 Thu	5:06	1.7	17:26	1.6	11:16	0.6	23:33	0.6	07:19	19:26
22 Fri	6:00	1.7	18:21	1.7			12:10	0.6	07:20	19:25

Only the BEST TRADIES will do! Use Locals... For Locals... Support Locals!

SMALL ENGINE REPAIRS

ANTS REPAIRS

Whangamata-based small engine repairs & maintenance

- Chainsaws • Lawnmowers
- Ride ons • Weedeaters

121 Sharyn Pl • 021 0244 2791
ants.repairs.nz@gmail.com

LAND DEVELOPMENT



Subdivisions
Boundary Markings
Land Use Consents Topographical Surveys
Building Setout and Certifications

Contact us
0508 4 BIRCH
tairua@birch.nz
244 Main Road, Tairua
www.birch.nz

EARTHWORKS



- Bobcat & excavator
- Tight access work
- Site works
- Topsoiling
- Driveways
- Hole drilling
- Concrete prep
- Cartage

Shay 021 742 966 | www.blackhillearthworks.co.nz
info@blackhillearthworks.co.nz

IT SUPPORT



FIBRE INTERNET
now available to
order from Boot I.T.

We are the Coromandel's
only local Fibre Internet
Provider, and the ONLY
provider that offers 7 days
per week support.

Call us on 0800 242 266
to find out more.

Boot it.

PAINTER

Gavin Johnson
PAINTER & DECORATOR

Interior/Exterior Painting

Wallpapering

Cedar Cleaning and
Restoration Service

0224 552 363

brushstrokeswhangamata@gmail.com



LANDSCAPING

Beach Contractors
& Landscape Supplies

LANDSCAPING SUPPLIES:

- | | | |
|--|---|---|
| Bark, mulch,
compost
and topsoil | Sand, lime chip,
river stones
and pebbles | Cement, builder's
mix and a range
of metals |
|--|---|---|

Delivery service available

Whangamata Yard
2546 Waihi Whangamata Rd
M. 027 261 1262

Waihi Beach Yard
691 Waihi Beach Rd
P. 07 863 5340

AIRPORT TRANSFER

BLACK
CAB.
CO.NZ

Auckland
Airport
Transfers

\$190 for first
2 passengers

Door to door

To book call
022 689 2531

Members Only Taxi Service

CONCRETE

BROWNMORE
CONSTRUCTION

CONCRETE CONTRACTORS

Any Concrete Requirements: Slabs, driveways, patios, paths, etc

All types of concrete - colour - finish

Council Permits for Vehicle Crossings

Excavation to finished product • Saw cutting & drilling

We take pride in doing a quality job at a competitive rate

REX: 027 285 5489

P. 07 863 3364 • office@brownmoreconstruction.co.nz

www.brownmoreconstruction.co.nz

FENCING

RURAL FENCING • RESIDENTIAL FENCING
POST AND RAIL • RETAINING WALLS
POLE SHED BUILDINGS
ORCHARD BUILDS & MAINTENANCE

coastline
FENCING LTD

BLAIN TEMPELMEYER 027 784 6538
coastlinefencing7@gmail.com

PAINTER

Coastline
Property Painters

Protecting your investment
Interior ■ Exterior ■ Roofs

Communication is everything
Updates & photos as your job progresses

Call Richard Upton: 0274 884 881 / www.coastlinepropertypainters.com

BUILDING WASHING



COROWASH
www.corowash.co.nz

COROMANDEL HOUSE &
BUILDING WASHING

No Mould, No Salt Pure Satisfaction

info@corowash.co.nz

Bronson Phillips 0223991130

FIREPLACES

Cosy Fires

www.cosyfires.co.nz

Your Whangamata-based gas & wood fire
agents. Available for site visits from the
Coromandel to B.O.P. to Hamilton.

Email sales@cosyfires.co.nz
or call Paul on 027 276 7076

OUTDOOR COVER

Covered.

- Louvres
- Privacy Panels
- Awnings
- Sails

LOUVRESYSTEMS

info@covered.co.nz 07 865 6207 or 027 497 1236

www.covered.co.nz 300 Casement Rd. Whangamata

CURTAINS / BLINDS



Specialising in:

- Curtains
- Roman Blinds
- Cushions
- Duvet Covers
- Roller Blinds
- Shutters

croft design

306 CASEMENT ROAD, WHANGAMATA
M. 0274 481 957 | E. beth@croftdesign.co.nz

CURTAINS / BLINDS

Curtains and Blinds and More
Whangamata

LOCALLY OWNED AND OPERATED

- Curtains
- Roman Blinds
- Venetian Blinds
- Shutters
- Roller Blinds
- Honeycomb Blinds

100% Mobile Service

We come to you, Free Measure and Quote

Call Louize or Gavin
on 027 4777 916

or email info@curtainsandblinds.co.nz

Use Only the Best Services in our Community! Use Locals... For Locals... Support Locals!

FRAMING



- Picture framing
- Framed mirrors
- Art installation
- Pick up & delivery

Ade Cunningham
M. 0274 929 695 or P. 07 575 9149
info@framesnz.co.nz • www.framesnz.co.nz
118 Brook Pl, Whangamata

PAINTER

Gerards Painting Services

Small jobs are my specialty!

PHONE: 021 108 5996



HANDYMAN

HANDYMAN

30 yrs experience, specialising in:

- Bathroom, deck & building repairs
- Gib fixing & plastering
- Interior /exterior painting

Please ring Rex on 021 997 428

BUILDING & LANDSCAPING

HBL HANSEN BUILDERZ

BUILDING & LANDSCAPING

COMMITTED TO EXCELLENCE
Contact us to discuss your project & a free estimate today



ADRIAN 0274 263 895 | hansen.builderz@gmail.com | HBLHomesnz
Residential | Commercial | Alterations | Additions

ARCHITECTURAL BUILDERS

HOME & Lifestyle

- Architectural Builders
- Interior & Colour Design Services
- Project Management

For trusted expertise with your building project

Katrina Jackson 027 273 0685 | Leigh Goodman 027 4475 423
info@homeandlifestyle.co.nz

LOCKSMITH

Homesafe Locksmiths & Services

ONE key to fit ALL doors!
FREE advice on your lock requirements



Ian McAuley (Macca) Owner/Operator
• 126A Tamaki Rd, Whangamata
• P 021 719 495 or 07 865 7092 • E imacca2003@yahoo.co.nz

BUILDING WASHING

HOUSE WASHING

Exterior house or commercial building wash, roof wash, fences, driveway, patios – soft-wash for best moss and lichen clean and treatment, exterior window cleaning, or general water blasting, 100m of hose so access is no problem
Prompt local service with 20 years' experience

Ph 0800 747 787 email atlasgroup@xtra.co.nz
or dial Andy direct on 027 313 4386

CLEANING



we'll take care of it

- Carpet Cleaning
- Pest Control
- Flood & Fire Restoration
- Stain Removal
- Upholstery Cleaning

07 863 8358 or 0800 225 552
whangamata@jae.co.nz




AUTOMOTIVE & BOATS



CUSTOMS & MARINE

BOAT TRAILERS, CARS, CLASSIC & HOT RODS

ONLY Repco STOCKIST IN TOWN! ONLY HONDA AGENT IN TOWN!

Aickin Road, Whangamata (next to Bunnings)
P. 865 9073 | E. office@jcdcustoms.co.nz
Mon-Fri from 8am

ACUPUNCTURE



KATRINA WOOD ACUPUNCTURE & Natural Therapies

Katrina Wood BHSc TCM. ACC Registered.
Online booking available through my website:
www.katrinawoodacupuncture.com
320 Casement Road • 0274 496448

ELECTRICAL



Electrical Laser

"Totally Dependable"

AVAILABLE 24/7

Residential | Commercial | Heat Pumps
Fire Systems

P. 865 9309 | whangamata@laserelectrical.co.nz
NEW LOCATION: 100 Lindsay Road



KITCHEN



WHANGAMATA WOODWORKS

Specialists in design, manufacture & installation of kitchens, wardrobes & custom cabinetry

108 Lindsay Rd, Whangamata P. 865 7947 whangamatawoodworks.com

MASTERCRAFT KITCHENS

TRAVEL BROKER



Kay M Gregan The Travel Designer Ltd

TAANZ Bonded Travel Broker, CLIA Accredited Cruise Specialist

For all your travel needs:

Flights | International & Domestic Holidays | Hotels | Honeymoons
Bespoke Group Travel | Coach Journeys | Ocean & River Cruises
School Groups | Vehicle Rentals | Travel Insurance | Visa Assistance

Whangamata: +64 7 865 9568 Mobile: +64 27 337 6222
thetravelbrokers.co.nz/kaygregan
Kay.Gregan@thetravelbrokers.co.nz

ADVERTISING



Contact Jennie
Whangamatā NEWS

Phone 021 0232 1661
whangamataneews@gmail.com
Secure your space on here today!

Only the BEST TRADIES will do! Use Locals... For Locals... Support Locals!

JOINERY

McBeth Rd Orchard Joinery
Affordable joinery

Kitchens new or upgraded
Laundries & bathrooms
Wardrobes & storage units
Free estimates

Tony & Nicky Ball - 027 229 2255
Whangamata

BUTCHER

MEAT AT THE BEACH

Support your local Butcher!

BBQ meat packs, in store made sausages, patties, tasty chops, steaks, butterflied chickens & much more.

"The home of Whanga bacon"

601 PORT ROAD, WHANGAMATA P. 07 865 7241
MON-FRI 8.30AM-5PM • SAT 8.30AM-3PM

BUILDER

MJC BUILDERS

Building with pride

- FENCING
- DECKS
- PERGOLAS
- ROOFING
- ALTERATIONS
- BUILDING REPAIRS
- CONCRETE DRIVEWAYS
- FULL LANDSCAPING



MIKE CUNNINGHAM M. 021 0677 555
E. mjc.builder.whangamata@gmail.com

TREE SPECIALIST



QUALIFIED ARBORIST

30 years experience in all aspects of tree work

- Pruning
- Felling
- Storm damage
- Hedge trimming
- Confined space dismantling
- Debris chipped
- Free quotes and more

Professional and reliable service - fully insured

Phone Greg Nicholson on 07 865 6769 or 021 133 0937
email: nicholsontreeservices@hotmail.com

PARTY EQUIPMENT

Table & Chairs
Marquee & Gazebo's
Lighting
Bar Equipment

Tableware
Kitchenware
Cooking Equipment
Audio & Machines



Lovie 021 297 0293 / Lofty 021 364 7893
info@whangamatapartyhire.co.nz
www.whangamatapartyhire.co.nz

PODIATRY

Pedicare Services

Professional Foot Care

Alison Walkington
Registered Nurse

Home visits by appointment



Mobile 027 663 2320 or
email alison.c.walkington@gmail.com

ARTWORK

PET PORTRAITS
& ANIMAL ART

by Donna

animalartbydonna
animalartbydonna
027 455 0608
donna@redbeach@msn.com



PHOTOGRAPHY

Pete Stretch
PHOTOGRAPHY



027-458-1179 peterstretchphotography@gmail.com

POOL & SPA SERVICES

Pool Queen LTD

MOBILE POOL & SPA CLEANING SERVICES

Sharleena Tucker ~ poolqueen@outlook.co.nz

027 316 3384
Coromandel Peninsula

WINDOW CLEANING



Your ecofriendly window cleaning service.

Mike Horton M 021 501 324
info@purenclean.co.nz www.purenclean.co.nz

HEAT PUMPS

Reef REFRIGERATION & AIR CONDITIONING LTD

We Sell and Service all Major Brands

Your heat pump specialist
On site marine & commercial refrigeration

Call today for a hassle-free quote

027 933 8599

www.reefrefrigeration.co.nz

BINS

Skip Bins, Wheelie Bins,
Front Load Bins

Contact us today!

We can help!



0800 4 MY BIN - www.smartbins.co.nz

Proudly 100% Kiwi owned

BUILDER

SKF

RESIDENTIAL SERVICES

Qualified Builder / LBP

07 865 6555 skfrs@xtra.co.nz

PLUMBER

Russell CHOAT
GAS & Plumbing

Whangamata

FOR ALL YOUR GAS-FITTING, PLUMBING,
DRAINAGE & ROOFING REQUIREMENTS

Registered craftsman & member
of Master Plumbers

M. 0274 714 869 E. CHOATS@XTRA.CO.NZ

ELECTRICIAN / DOG GROOMER

Rusty Sparks

EVERYTHING ELECTRICAL

Residential, Commercial,
Data, Alarms

021 800 017
admin@rustysparks.nz



PIMPED PUPS
GROOM ROOM

021 850 017
WHANGAMATA

Use Only the Best Services in our Community!

Use Locals... For Locals... Support Locals!

BOARDING KENNEL / CATTERY



SPOT X
BOARDING KENNELS AND CATTERY

Quality care and facilities in a rural setting
Office hours: 9am-12 noon and 3-5pm daily
INSPECTION WELCOME
Ph 07 865 8242 or 027 624 3890
Annette Gillatt
4km south of Whangamata on the main road

REFRIGERATION & AIR CON



TIDELINE REFRIGERATION
WHANGAMATA

- * HEAT PUMPS
- * REFRIGERATION
- * AIR CONDITIONING
- * VENTILATION

SERVICING IN THE COROMANDEL AREA
0272121994 - 0277251820
TIDELINEREFRIGERATION@GMAIL.COM
WWW.TIDELINEREFRIGERATION.COM

TREE SPECIALIST



- Tree felling & pruning
- Hedge trimming
- Stump grinding
- Fully insured
- Qualified arborist

TREECARE WHANGAMATA LTD
Contact Ben 021 827 355
treecarewhangamata@gmail.com

ARBORIST



TREE TOPS ARBORIST

- Professional experienced and insured arborist
- All tree work including removal / pruning
- Hedge trimming and property maintenance
- Quality firewood and smoker wood

Heath van Leeuwen 0210 838 9922
email Heathsvan@gmail.com

LAWYERS

USSHER LAWYERS
- SINCE 2007 -

We can help with all of your general legal needs

- Conveyancing if you are buying or selling property
- Sale and purchase of business assets • Commercial leasing
- Relationship property • Trusts • Wills • Enduring powers of attorney

www.ussherlawyers.co.nz | Phone 07 865 8824
We've moved - now at 123 Lindsay Rd, Whangamata

WARDROBES



WARDROBES DIRECT

Steve Parkinson
Central, East & South
021 0733 100
steve.parkinson@xtra.co.nz

ALSO SERVICING WHANGAMATA
www.wardrobesdirect.co.nz

Showroom Unit 2, 63 Morrin Rd St John's Auckland

LAUNDRY



WHANGA LAUNDROMAT

The only locally owned & operated laundromat in town!
OPEN 24 HOURS - 7 DAYS A WEEK
CASEMENT RD, WHANGAMATA (OPPOSITE WAITOMO FUEL)

SCAFFOLDING



WHANGAMATA SCAFFOLDING

- Mobile scaffolding
- Roof edge protection
- Construction scaffold

Servicing Whangamata and surrounding areas

Please ring 022 076 0160 or email whangamatascaffolding@gmail.com
102 Lindsay Road, Whangamata Est 2014

SEAFOOD



WHANGAMATA SEAFOODS
2021

112 WATTLE PLACE
PH: 027 318 7495

TYRE & BATTERY SERVICES



WHANGAMATA TYRE & BATTERY

KUMHOTYRES 7

Car tyres / Wheel alignment
4WD tyres / Tyre repair
Wheel balance
Small implement tyres
Batteries - car & marine

Phone Simon 865 7698

CHALLENGE Cnr Port & Ocean Rd, Whangamata
www.challenge.net.nz

WINDOW & DOOR SERVICES



WHANGAMATA WINDOW & DOOR SERVICES

Bryce Hall
M. 027 282 2057
Ph. 865 9714

Reglaze // Repairs // Maintenance
Retro Fit Double Glaze

whangamatawindowdoorservices@xtra.co.nz

UPHOLSTERY



WINDWOVEN UPHOLSTERY

For all your upholstery needs

- Home • Office • Boat • Caravan

Available 6 days for your convenience
Free quotes

07 865 8774
021 066 5788

HOME SERVICES



YourLocal
NZ's Trusted Home Services

Avi@yourlocal.nz - www.yourlocal.nz - 022 534 5478

We specialise in

- Exterior house wash, windows, driveways, patios, decks, fences & roofs • Commercial, residential, rural, new builds & painters prep • Pests treatment (fumigation)
- Rodents & wasps • Chimney sweeping • Roof treatments

BUSINESS FRANCHISE FOR SALE

We cover Coromandel, Thames, Waihi, Waihi Beach, Whitianga, Whangamata

CLOTHING



YUKEYS
3620

Clothing Alterations and Repairs
LADIES - MEN - CHILDRENSWEAR

Open Tuesday to Friday 8.30am to 1.30pm
Saturday 9am to 12pm
105 Nickin Road (just off Port Road)
Whangamata
m. 021 0289 3968

ADVERTISING

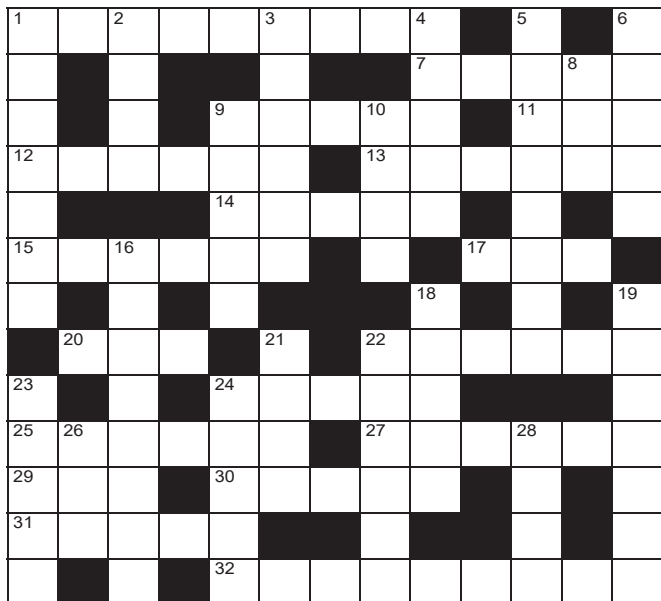


Whangamata NEWS

By Locals, For Locals,
About Locals! Home delivered.
Call Jennie 021 0232 1661.



QUICK CROSSWORD



- Across**
- Settle conclusively (6,3)
 - Bull ring (5)
 - Fragrance (5)
 - Be in session (3)
 - Rip off (6)
 - Without question (6)
 - Horror (5)
 - Age group (6)
 - Single unit (3)
 - Pixie (3)
 - Chasten (6)
 - Strong point (5)
 - Amalgam (6)
 - Consecrate (6)
 - Boating implement (3)
 - Premature (5)
 - Besmirch (5)
 - Measuring standard (9)
- Down**
- Be adequate (7)
 - Impulse (4)
 - Other than (6)
 - Deadly (5)
 - Quit (8)
 - Woodland god or faun (5)
 - None (3)
 - Frighten (5)
 - Orderly (4)
 - Self-made alcohol (4,4)
 - Question (5)
 - Reactionary (7)
 - Carbonated water (4)
 - Dull and impassive (6)
 - Spirit (5)
 - Flaming (5)
 - Edible tuber (3)
 - Not in favour of (4)

SOLUTIONS

SUDOKU

2	5	4	7	9	8	1	3	6
8	3	6	4	2	1	9	5	7
9	7	1	5	3	6	4	8	2
6	4	3	1	5	9	2	7	8
5	8	2	6	4	7	3	1	9
1	9	7	3	8	2	6	4	5
3	1	8	9	6	5	7	2	4
7	2	9	8	1	4	5	6	3
4	6	5	2	7	3	8	9	1

DECODER

1	2	3	4	5	6	7	8	9	10	11	12	13
O												
14	15	16	17	18	19	20	21	22	23	24	25	26
					T	W						

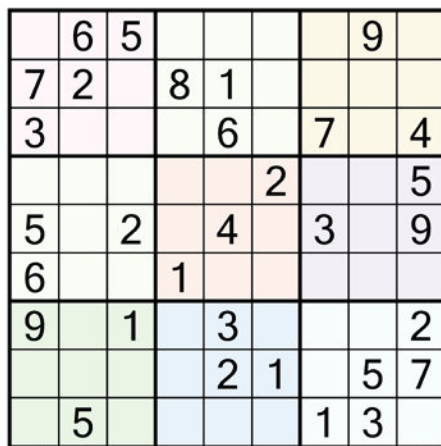
CRYPTIC

Across: 1. Ciochoppers, 9. Overarm, 10ac. The whole nine yards, 21. Morse, 11ac. Czechoslovak, 13. Lisle, 15. Stash, 18 & 19ac. Appal, 15. Cohort, 12. Fleece, 13. Eastly, 14. Appal, 15. Cohort, 17. One, 20. Imp, 22. Subdue, 24. Forte, 25. Hybrid, 27. Ordain, 29. Car, 30. Early, 31. Smear, 32. Yardstick.

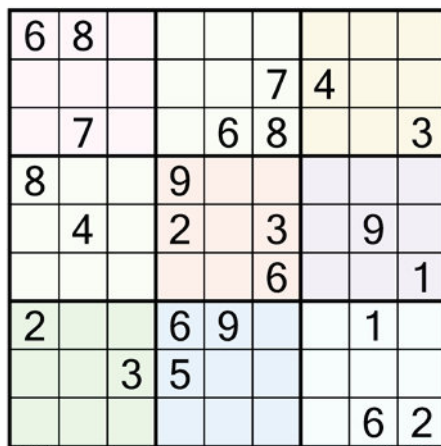
Down: 1. Suffice, 2. Urges, 3. Except, 4. Fatal, 5. Resigned, 6. Satyr, 8. Nil, 9. Scare, 10. Neat, 16. Home brew, 18. Query, 19. Redneck, 21. Soda, 22. Stolid, 23. Ghost, 24. Feary, 26. Yam, 28. Antl.

SUDOKU

Fill the grid so every row, column and 3x3 box contains the numbers 1-9



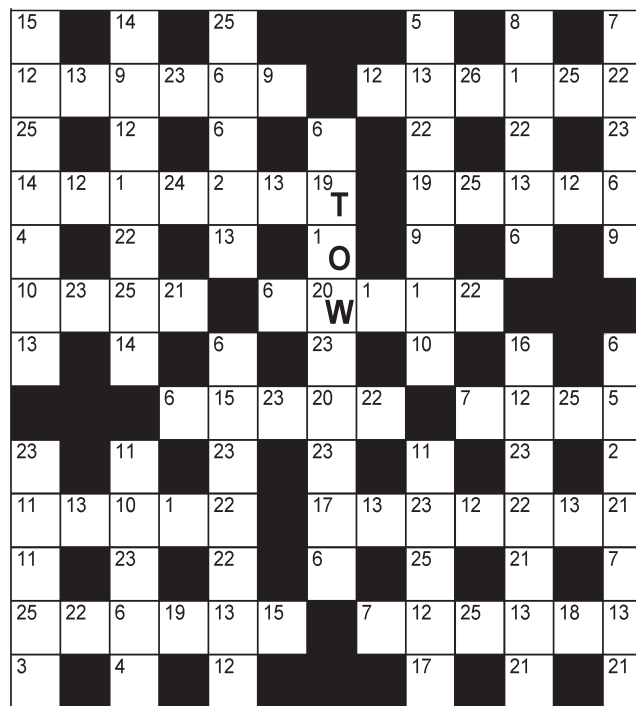
W195 EASY



W196 HARDER

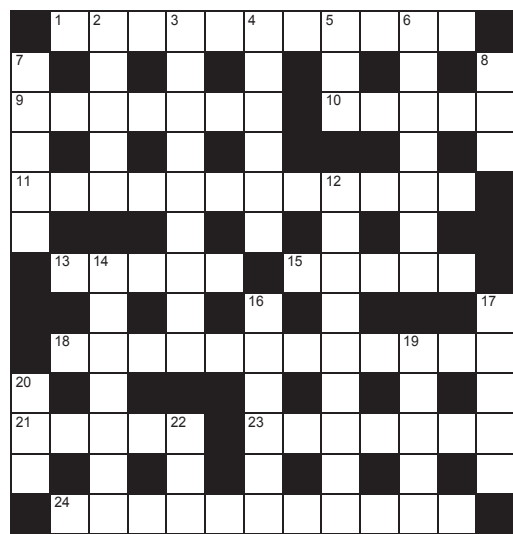
DECODER

Each number below represents a different letter. Find the correct letter for each number by working out the word from the letters given. To keep track, cross the letters off on the grid below.



A	B	C	D	E	F	G	H	I	J	K	L	M	N	O	P	Q	R	S	T	U	V	W	X	Y	Z
1	2	3	4	5	6	7	8	9	10	11	12	13													
O																									
14	15	16	17	18	19	20	21	22	23	24	25	26													
						T	W																		

CRYPTIC CROSSWORD



All puzzles © The Puzzle Company

- Across**
- Footwear in "The Dancing Ploughman"? (11)
 - See 18
 - Val checks zoo out with man from Prague (12)
 - The Italian man returns with the French developed material (5)
 - Hastings unfortunately has no gin but something else hidden somewhere (5)
 - 18 & 10ac. Came up with the entire 324 inches (3,5,4,5)
 - TV character who dots his "I"s (twice) and crosses his "T"s? (5)
 - The distance (or place) a golfer would want to hit (7)
 - What's "invention" say? (5,6)
- Down**
- Chaile Geddes is bound to give feudal service from within (5)
 - Is this what caused the wind up? (9)
 - Diffuse when Burt leaves the motorbuses around (6)
 - Force open to peek into (3)
 - Goes through the book again because it's rare, Des, maybe (7)
 - Set fire to the lantern (5)
 - Ms. Ball on cloud nine with her jewellery? Could be mind blowing initially (3)
 - Nothing we changed is not a Kiwi's lifestyle (2,3,4)
 - Once again her itinerary has the chance to gain property (7)
 - Sweet talk? (6)
 - Unfortunately, Yankee loses direction in Africa (5)
 - The man from the Mayfair wineshop (5)
 - No longitude this time initially (3)
 - "Broken Window" was written by Ms. Brick? (3)

Power and performance

SAVE \$1000

TC242TX
Rear Catcher Model, 42" Cut, 21.5hp
Kawasaki V-twin Engine, Hydrostatic Transmission

\$9,490
\$10,490 RRP

SAVE \$500

TS142TXD
42" Deck, Hydrostatic Diff Lock Transmission, Kawasaki V-Twin Engine

\$7,490
\$7,990 RRP

Q CARD
36 MONTHS INTEREST FREE*

*36 months interest free is available on Long Term Finance (LTF) for in-store and online purchases only. Min spend \$3,490. Lending criteria, \$50 annual Account Fee, fees, Ts&Cs apply. \$55 Establishment Fee applies to your first LTF transaction. \$35 Advance Fee applies to subsequent LTF transactions. Min payments of 3% of the monthly closing balance or \$10 (whichever is greater) are required throughout interest free period. Paying only the minimum monthly payments will not fully repay the loan before the end of the interest free period. Q Mastercard Expired Promotional Rate or Q Card Standard Interest Rate (both 27.99% p.a.) applies at the end of LTF Interest Free Period. (See Ts&Cs for Q Mastercard Standard Interest Rate applicable to outstanding balance of a Standard Purchase.) Rates and fees subject to change. Columbus Financial Services Limited and Consumer Finance Limited reserve the right to amend, suspend or terminate the offer and these Ts&Cs at any time without notice. Mastercard and the circles design are registered trademarks of Mastercard International Incorporated.

Shaun Prescott, Sales Manager
021 285 4870 / 07 864 7801
1 Hikuai Settlement Road, Hikuai
www.prescottsgarages.co.nz

5 YEAR DOMESTIC WARRANTY#
Terms and Conditions apply, see HUSQVARNA.COM for details.

We sell and service Husqvarna's huge range of product. We also demonstrate and deliver.

Visit husqvarna.com today

Offers valid 1/09/23 - 31/01/2024, while stocks last.